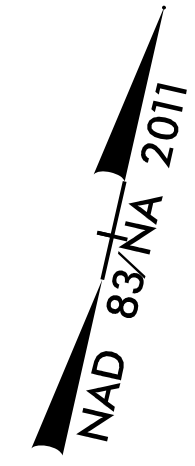
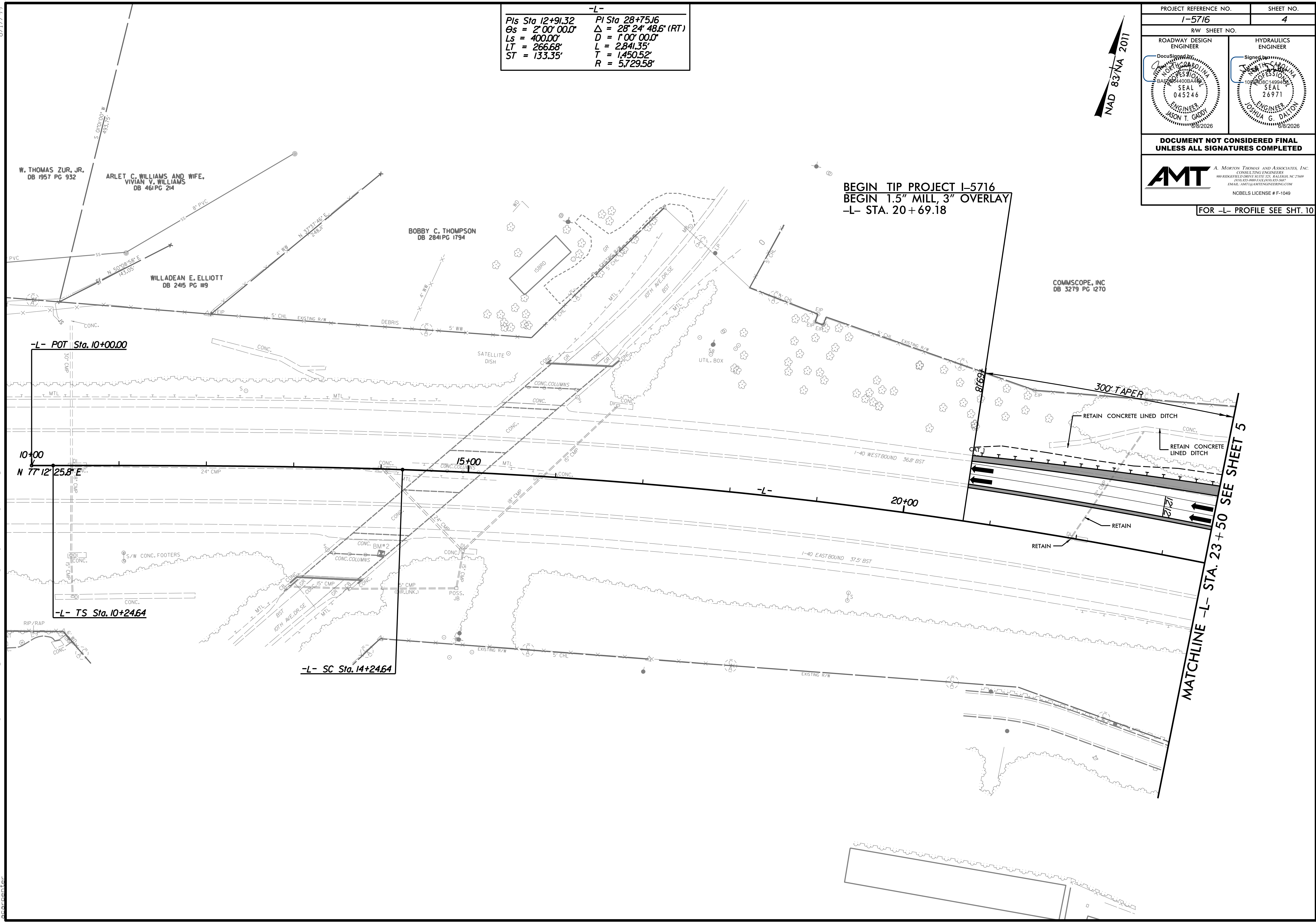


8/17/99

-L-	
PIs Sta 12+91.32	PI Sta 28+75.16
$\theta_s = 2^\circ 00' 00.0''$	$\Delta = 28^\circ 24' 48.6''$ (RT)
$L_s = 400.00'$	$D = 1^\circ 00' 00.0''$
$LT = 266.68'$	$L = 2841.35'$
$ST = 133.35'$	$T = 1,450.52'$
	$R = 5,729.58'$



PROJECT REFERENCE NO. I-5716	SHEET NO. 4
R/W SHEET NO.	
ROADWAY DESIGN ENGINEER	HYDRAULICS ENGINEER
DocuSigned by: A. MORTON THOMAS AND ASSOCIATES, INC. Professional Engineer SEAL 045246 JASON T. GADY 08/2026	Signed by: A. MORTON THOMAS AND ASSOCIATES, INC. Professional Engineer SEAL 26971 ORNUA S. DALTON 08/2026
DOCUMENT NOT CONSIDERED FINAL UNLESS ALL SIGNATURES COMPLETED	
<small>A. MORTON THOMAS AND ASSOCIATES, INC. CONSULTING ENGINEERS 900 RIDGEFIELD DRIVE, SUITE 325, RALEIGH, NC 27609 PHONE: 919-888-7400 FAX: 919-855-3885 EMAIL: AMT@AMTEngineering.com NCBELS LICENSE # F-1049</small>	
FOR -L- PROFILE SEE SHT. 10	



**BEGIN TIP PROJECT I-5716
BEGIN 1.5" MILL, 3" OVERLAY
-L- STA. 20+69.18**

-L- POT Sta. 10+00.00

10+00
N 77° 12' 25.8" E

-L- TS Sta. 10+24.64

-L- SC Sta. 14+24.64

15+00

20+00

MATCHLINE -L- STA. 23 + 50 SEE SHEET 5

4/28/2026
 X:\Projects\14-568 - NCDOT- I-5716, I-40 Lenoir-Rhine Interchange\05-CAD\15716\Roadway\Proj\15716_Rdy_psh04.dgn
 8/17/99