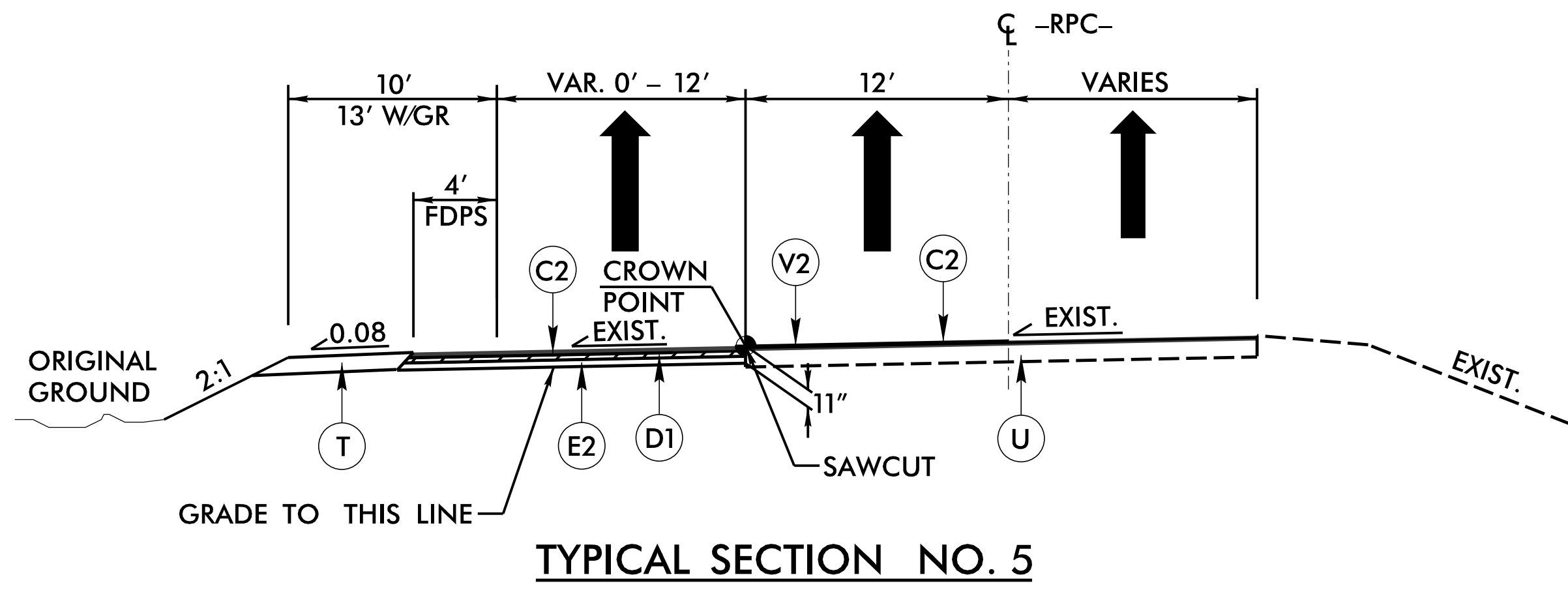


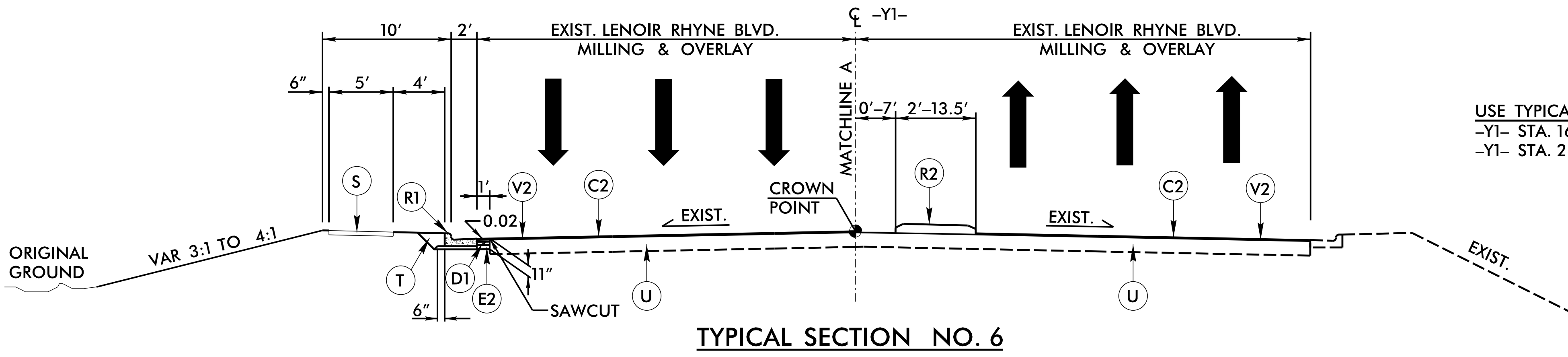
6/22/26 5/5/2026 3/15/2026 1-5716 - NCDOT - I-40 Lenoir-Rhyne Interchange V05-CAD\15716\Roadway\Proj\15716\_rdy\_typ.dgn

PAVEMENT SCHEDULE <small>(FINAL PAVEMENT DESIGN)</small>	
C2	3" S9.5C
C3	VAR. S9.5C
D1	4" I19.0C
D2	VAR. I19.0C
E1	8" B25.0C
E2	4" B25.0C
E3	VAR. B25.0C
J1	4" ABC
K	8" CLASS IV
N	GEOTEXTILE
R1	2'-6" C & G
R2	5" MONO. ISLAND (KEYED IN)
S	4" CONC. SW
T	EARTH MATERIAL
U	EXIST. PAVEMENT
V1	1.5" MILLING
V2	3" MILLING
V3	INCID. MILLING
W	WEDGING
Y	RUMBLE STRIPS



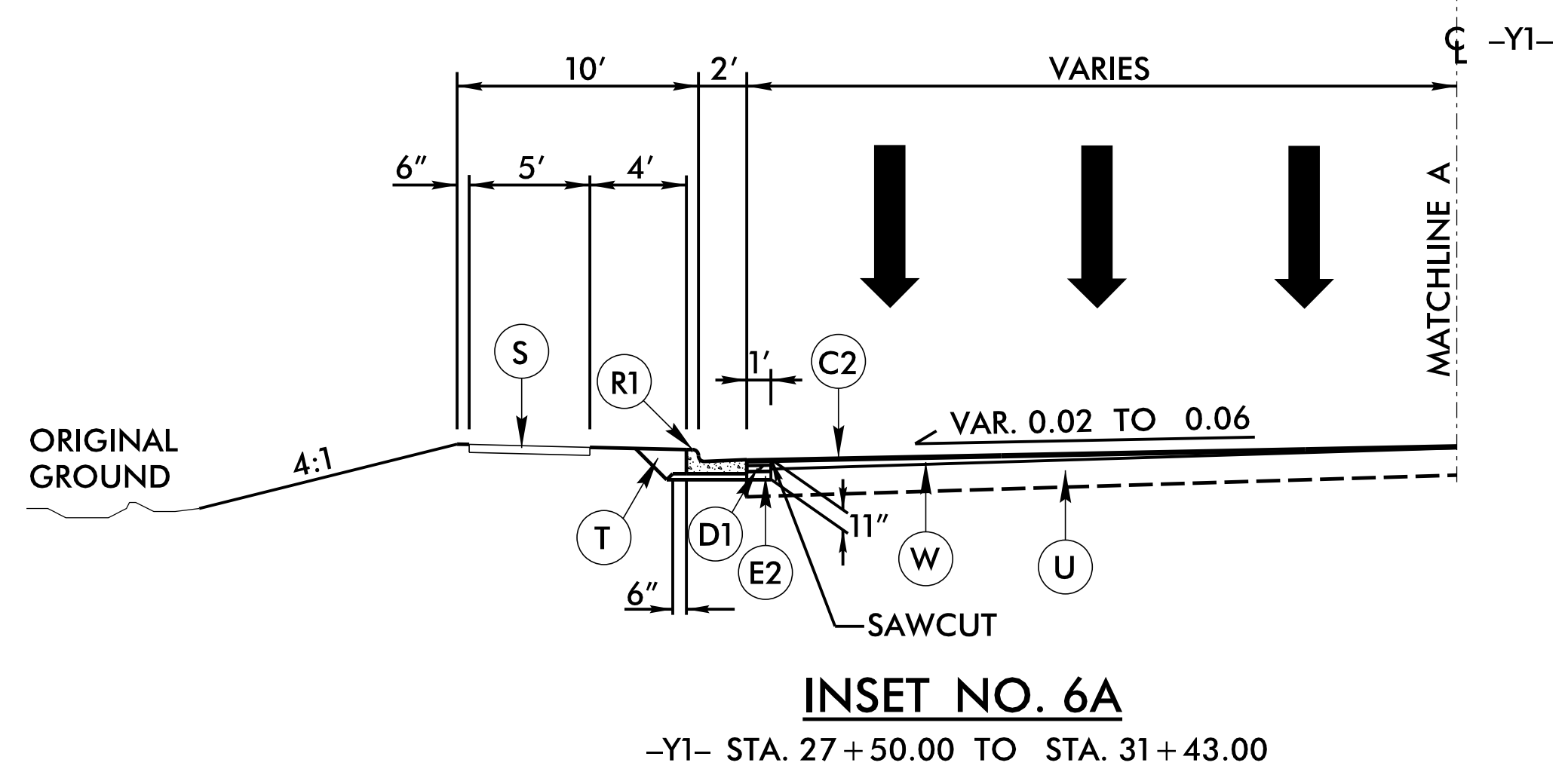
**TYPICAL SECTION NO. 5**

USE TYPICAL SECTION NO. 5  
-RPC- STA. 21+28.56 TO 28+56.21



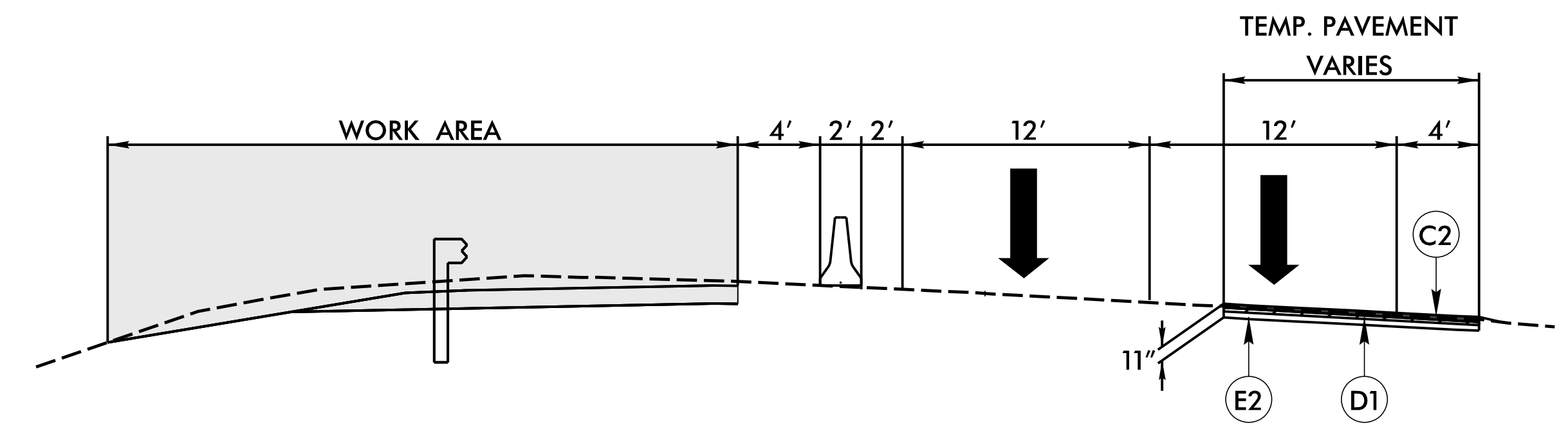
**TYPICAL SECTION NO. 6**

USE TYPICAL SECTION NO. 6  
-Y1- STA. 16+64.00 TO STA. 23+60.87 (BEGIN EXIST. BRIDGE)  
-Y1- STA. 26+58.73 (END EXIST. BRIDGE) TO STA. 35+10.00



**INSET NO. 6A**

-Y1- STA. 27+50.00 TO STA. 31+43.00



**-L- TEMPORARY PAVEMENT**  
SEE TMP PLANS FOR LOCATIONS

PROJECT REFERENCE NO. <b>1-5716</b>	SHEET NO. <b>2A-3</b>
ROADWAY DESIGN ENGINEER <i>Jason T. Gaddy</i> SEAL 045246 6/9/2026	PAVEMENT DESIGN ENGINEER <i>Joseph T. Holland</i> SEAL 024964 6/9/2026
<b>DOCUMENT NOT CONSIDERED FINAL UNLESS ALL SIGNATURES COMPLETED</b>	
 A. MORTON THOMAS AND ASSOCIATES, INC. CONSULTING ENGINEERS 900 RIDGETOP DRIVE SUITE 325, RALEIGH, NC 27609 PHONE: 919.880.1400 FAX: 919.880.1401 EMAIL: AMT@AMTENGINEERING.COM NCBELS LICENSE # F-1049	