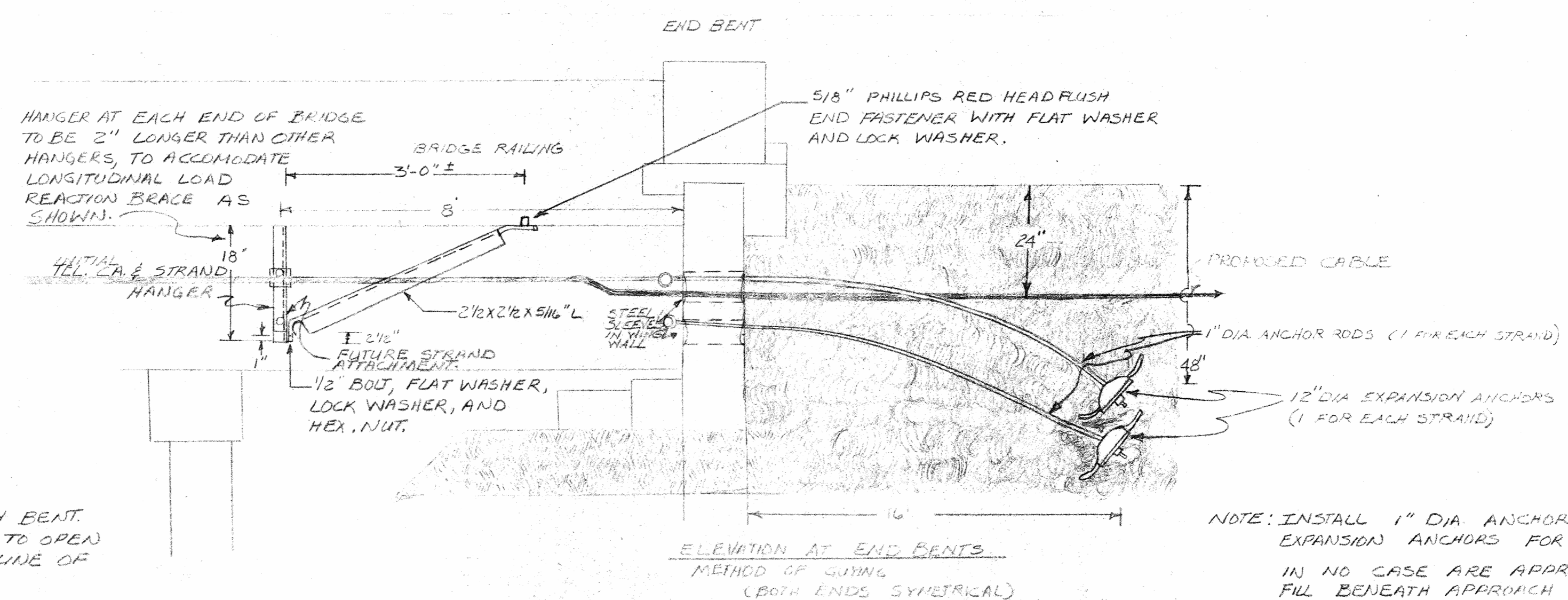


NOTE: USE FLAT WASHER AND LOCK WASHER WITH EACH EXPANSION ANCHOR BOLT. USE 5/8" X 1 3/4" GAUN. BOLTS.

NOTE: ONE ANCHOR ROD AND ONE CABLE TO BE PLACED IN EACH SLEEVE



LOCATION OF HANGERS ON WEST ASSEMBLY AT BENTS ON WESTERN SIDE

NOTE: ONE HANGER BRACKET AT EACH BENT. LOCATE NO CLOSER THAN 1'-0" TO OPEN EXPANSION JOINT AT CENTERLINE OF BENT.

NOTE: INSTALL 1" DIA ANCHOR ROD AND 12" DIA. EXPANSION ANCHORS FOR FUTURE ATTACHMENT. IN NO CASE ARE APPROACH SLABS OR FILL BENEATH APPROACH SLABS TO BE DISTURBED. IF NECESSARY, SHOWING SHOULD BE USED.

NOTE: FABRICATE HANGER AND BRACE AS SHOWN FOR WEST END OF BRIDGE AND IN OPPOSITE HAND FOR EAST END OF BRIDGE. LONGITUDINAL LOAD REACTION BRACE IS TO BE INSTALLED PARALLEL TO CONCRETE GIRDER.

END BT.#1	BT.#1	BT.#2	BT.#3	BT.#4	BT.#5	BT.#6	BT.#7	BT.#8	BT.#9	BT.#10	BT.#11	BT.#12	BT.#13	BT.#14	BT.#15	BT.#16	BT.#17	END BT.#2
62'-8"	67'-6"	67'	82'	82'	82'	82'	82'	82'	85'	85'	85'	85'	85'	85'	85'	85'	85'	84'-2"
8'-57'-8"	86'-1"	86'-0"	81'-5"	81'-0"	81'-1"	81'-0"	81'-0"	81'-0"	84'-0"	84'-5"	84'-0"	84'-0"	84'-0"	84'-0"	84'-0"	84'-0"	84'-0"	76'-0"
8'-57'-8"	67'-6"	67'	82'	82'	82'	82'	82'	82'	85'	85'	85'	85'	85'	85'	85'	85'	85'	77'-2"

● = LOCATION OF HANGER BRACKETS

AUTHORIZED CODES

TAX DATA

TRANSMISSION DATA

FORECAST SECTION

TAPER POINT

N. C. DOT  
DESIGN SERVICES  
APPROVED BY *[Signature]*  
AS NOTED  
SEE MEMO  
PROJECT  
D. L. SQUIRES, P. E.  
DATED 10-20-82

REV. NO.			
CAROLINA TELEPHONE AND TELEGRAPH COMPANY TARBORO, N. C.			
TITLE			
SALTER'S CREEK ATTACHMENT BY CAROLINA TELEPHONE			
PROJECT # B.1201302			
DRAFTSMAN	DRAWING NO.	EXCHANGE OR TOLL LINE	
KRR	2 OF 2	ATLANTIC, N. C.	
ENGR.	DIV. ENGR.		
SHP			
DIST. ENGR.	DATE	PROJECT	EST. OR K. C. JOB
SHP	10-1-82	-	22103007

GENERAL NOTES

1. OPENINGS FOR METAL SLEEVES IN EARWALLS TO BE MADE IN A NEAT AND WORKMAN LIKE MANNER.
2. OPENINGS FOR METAL SLEEVES IN EARWALLS TO BE A MAXIMUM OF 1" LARGER THAN OUTSIDE OF SLEEVES.
3. OPENINGS FOR METAL SLEEVES TO BE MADE WITH ROTARY CORE DRILL ONLY; NO HAMMER OF ANY TYPE TO BE USED
4. OPENINGS BETWEEN EARWALLS AND METAL SLEEVES TO BE FILLED WITH NON-SHINKING GROUT, TO BE FINISHED TO CONFORM IN COLOR WITH EXISTING CONCRETE AND IS TO BE RUBBED SMOOTH AND FLUSH WITH THE EXISTING CONCRETE.
5. METAL SLEEVES ARE TO BE FLUSH WITH BOTH FACES OF EARWALLS.
6. THE OPENINGS BETWEEN THE CABLE AND THE METAL SLEEVES ARE TO BE FILLED WITH JUTE UP TO 2" OF THE ENDS OF THE SLEEVES. THE BALANCE OF THE OPENINGS ARE TO BE WATERPROOFED WITH A MASTIC OR PLASTIC CAULKING COMPOUND TO CONFORM IN COLOR WITH THE EXISTING CONCRETE AND FINISHED SMOOTH AND FLUSH WITH THE EXISTING CONCRETE. THIS ALSO APPLIES TO LOWER SLEEVES, DURING INITIAL INSTALLATION. WHEN FUTURE CABLE IS INSTALLED, EXISTING JUTE AND CAULKING IS TO BE REMOVED AND REPLACED WITH NEW JUTE AND CAULKING AS SPECIFIED ABOVE.
7. HOLES FOR EXPANSION ANCHORS SHALL BE MADE WITH A ROTARY DRILL OR ROTARY-IMPACT DRILL ONLY. MAXIMUM SIZE OF DRILL SHALL BE 27/32". HOLES FOR ANCHORS SHALL BE DRILLED, SQUARED AND ALIGNED AS APPROVED, AS NO OVER SIZE DRILLING OR REDRILLING WILL BE ALLOWED, EXCEPT WHEN REINFORCING STEEL IS ENCOUNTERED. WHEN REINFORCING STEEL IS ENCOUNTERED, THE DRILLING IS TO BE STOPPED AND RESUMED AT A LOCATION 3" FROM EITHER SIDE OF THE EXISTING HOLE, BUT NOT AT A DISTANCE TO EXCEED THE MAXIMUM ALLOWABLE SPACING. ANY EXISTING HOLES DUE TO ENCOUNTERING REINFORCING STEEL ARE TO BE THOROUGHLY FILLED WITH A 1:3 PORTLAND GROUT AND FINISHED SMOOTH AND FLUSH WITH THE EXISTING CONCRETE. DEPTH OF HOLE TO BE 2 1/2". ALL HOLES MUST BE CLEANED FREE OF ALL DUST PRIOR TO INSTALLATION OF EXPANSION CASES.
8. THE MESSENGER CABLE IS TO BE TENSIONED SUFFICIENTLY TO PREVENT UNNECESSARY SAG

INITIAL ATTACHMENTS

ITEM	NO.	TOTAL AMOUNT	WEIGHT OF ITEM	SUB-TOTAL WEIGHT (LBS)
200 PAIR 22 GAUGE CABLE	1	1480'	1.71 LB/FT	2531.0 LBS
10 M MESSGR. STRAND	1	1480'	.273 LB/FT	404.04 LBS.
5/8 X 2 3/8" EXPANSION ANCHOR WITH BOLT	40	40	3/4 LBS EACH	30 LBS.
HANGER ASSEMBLY FOR STRAND AND CABLE	19	19	20 LBS. EACH	380 LBS.
SUSPENSION CLAMPS WITH BOLT AND NUT	19	19	3 LBS. EACH	57 LBS.

INITIAL TOTAL WEIGHT = 3402.04 LBS.  
WEIGHT DISTRIBUTION PER FT. = 2.30 LBS/FT

FUTURE ATTACHMENTS

200 PAIR 22 GAUGE CABLE OR EQUIVALENT WEIGHT	1	1480	1.71 LB/FT	2531.0 LBS.
10M MESSGR. STRAND	1	1480	.273 LB/FT.	404.04 LBS.
SUSPENSION CLAMP WITH BOLT AND NUT	19	19	3 LBS. EACH	57 LBS.

FUTURE TOTAL WEIGHT = 2992.04 LBS.

MAXIMUM TOTAL WIEGHT (INITIAL + FUTURE) = 6394.08 LBS.  
4.32 LBS./FT.

SPECIFICATIONS FOR EXPANSION ANCHORS

TYPE ANCHOR	BOLT SIZE	DEPTH OF THREAD	DEPTH IN CONCRETE	DRILL SIZE	PULL OUT LBS
PHILLIPS RED HEAD FLUSH END FASTENERS	5/8"	7/8"	2 3/8"	27/32"	11,570

N. C. DOT  
DESIGN SERVICES  
APPROVED BY *W. S. Shames*  
AS NOTED \_\_\_\_\_  
SEE MEMO \_\_\_\_\_  
PROJECT \_\_\_\_\_  
D. L. SQUIRES, P. E.  
DATED 10-20-82

MATERIAL ORDERING INFORMATION

1. 10M MESSENGER STRAND, CABLE SUSPENSION CLAMPS, BOLTS, NUTS AND MISCELLANEOUS HARDWARE CAN BE OBTAINED FROM STOCK.
2. 12" X 5/16" O.D GALVANIZED STEEL SLEEVES MAY BE OBTAINED FROM RIVERSIDE IRON WORKS, HIGHWAY 17 SOUTH, NEW BERN, N.C.
3. 5/8" X 2 3/8" EXPANSION CASES MAY BE OBTAINED FROM GRINWELL
4. HANGER ASSEMBLY MAY BE OBTAINED FROM RIVERSIDE IRON WORKS.

NOTE: ALL HARDWARE AND STEEL SHALL BE HOT DIP GALVANIZED.

AUTHORIZED CODES

TRANSMISSION DATA  
CODE \_\_\_\_\_ ZONE \_\_\_\_\_

TAX DATA

CO. \_\_\_\_\_  
CORP. \_\_\_\_\_  
S. D. \_\_\_\_\_  
S. D. \_\_\_\_\_

FORECAST SECTION

TAPER POINT

REV. NO.

CAROLINA TELEPHONE AND TELEGRAPH COMPANY  
TARBORO, N. C.

TITLE  
SALTERS CREEK ATTACHMENT  
BY CAROLINA TELEPHONE  
PROJECT # B.1201302

DRAFTSMAN	DRAWING NO.	EXCHANGE OR TOLL LINE
HAD	1 OF 2	ATLANTIC, N.C.
ENGR	DIV. ENGR	
SHP		
DIST ENGR	DATE	PROJECT
SHP	10-1-82	WORK ORDER
		22103007