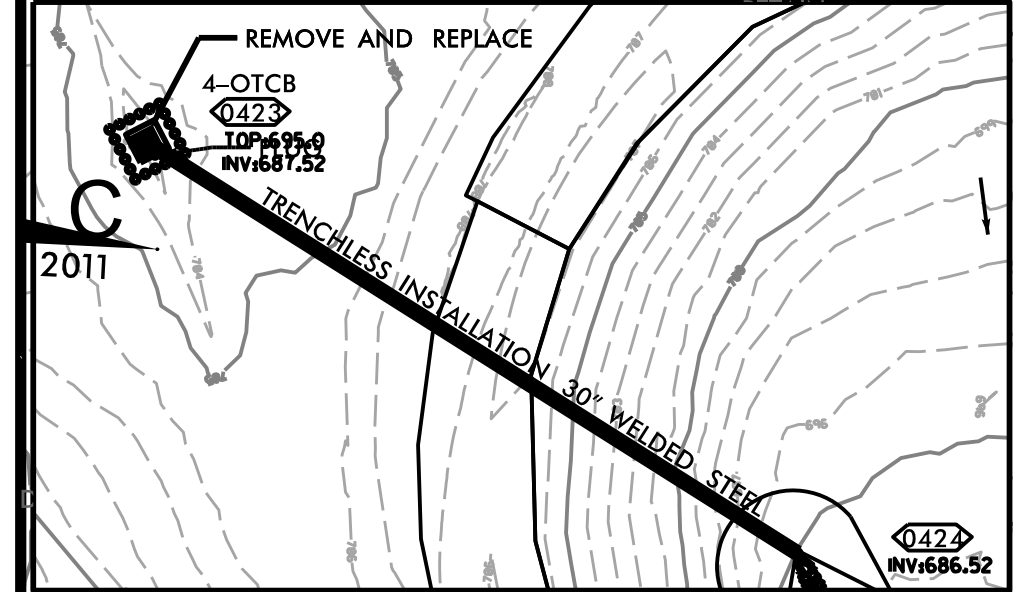
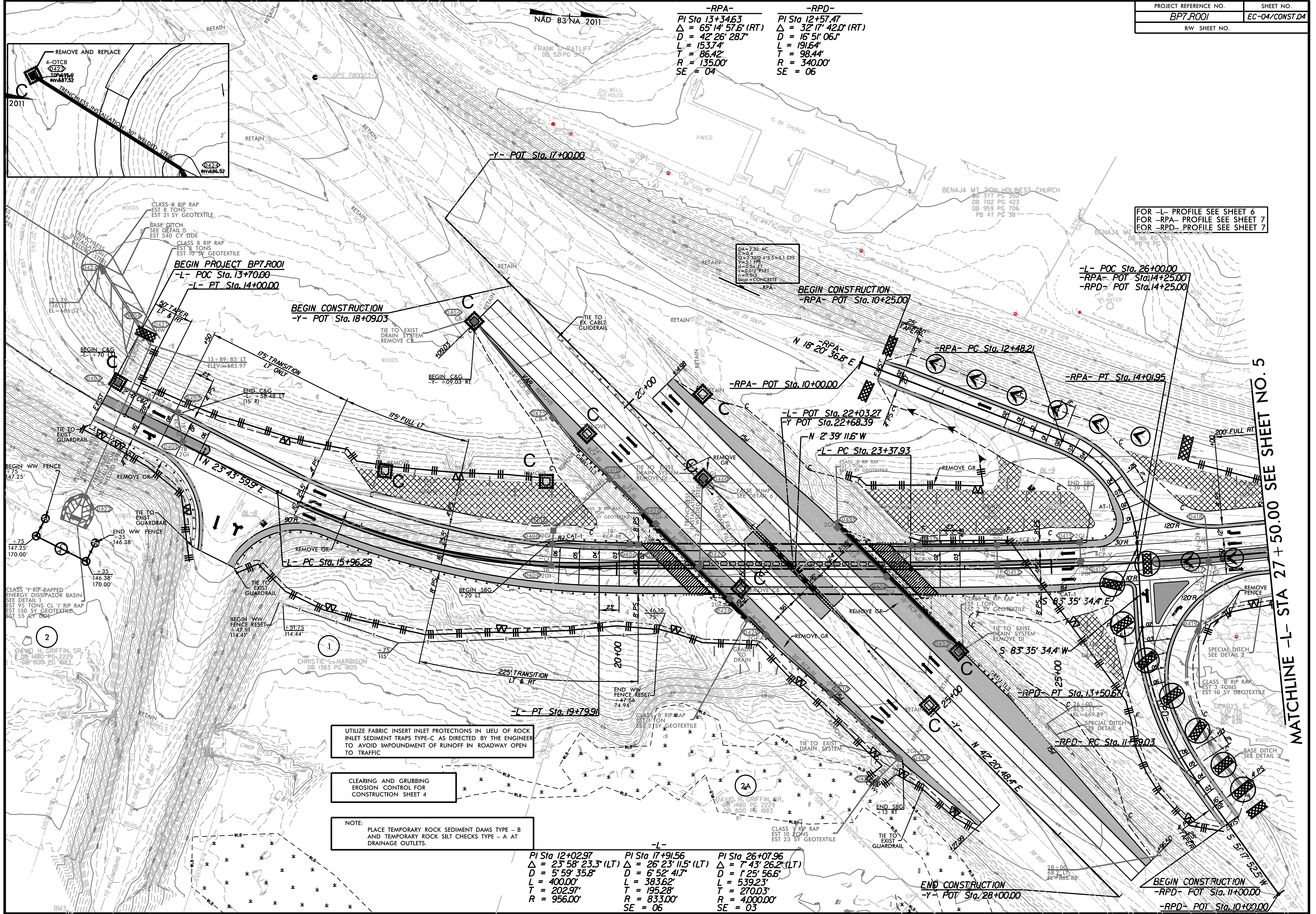


-RPA-
 PI Sta 13+34.63
 $\Delta = 65' 14" 57.6" (RT)$
 $D = 42' 26" 28.7"$
 $L = 153.74'$
 $T = 86.42'$
 $R = 135.00'$
 $SE = 04$

-RPD-
 PI Sta 12+57.47
 $\Delta = 32' 17" 42.0" (RT)$
 $D = 16' 51" 06.1"$
 $L = 191.64'$
 $T = 98.44'$
 $R = 340.00'$
 $SE = 06$

FOR -L- PROFILE SEE SHEET 6
 FOR -RPA- PROFILE SEE SHEET 7
 FOR -RPD- PROFILE SEE SHEET 7



UTILIZE FABRIC INSERT INLET PROTECTIONS IN LIEU OF ROCK INLET SEDIMENT TRAPS TYPE-C AS DIRECTED BY THE ENGINEER TO AVOID IMPOUNDMENT OF RUNOFF IN ROADWAY OPEN TO TRAFFIC

CLEARING AND GRUBBING EROSION CONTROL FOR CONSTRUCTION SHEET 4

NOTE:
 PLACE TEMPORARY ROCK SEDIMENT DAMS TYPE - B AND TEMPORARY ROCK SILT CHECKS TYPE - A AT DRAINAGE OUTLETS.

-L-
 PI Sta 12+02.97
 $\Delta = 23' 58" 23.3" (LT)$
 $D = 5' 59" 35.8"$
 $L = 400.00'$
 $T = 202.97'$
 $R = 956.00'$

-L-
 PI Sta 17+91.56
 $\Delta = 26' 23" 11.5" (LT)$
 $D = 6' 52" 41.7"$
 $L = 383.62'$
 $T = 195.28'$
 $R = 833.00'$
 $SE = 06$

-L-
 PI Sta 26+07.96
 $\Delta = 7' 43" 26.2" (LT)$
 $D = 1' 25" 56.6"$
 $L = 539.23'$
 $T = 270.03'$
 $R = 4,000.00'$
 $SE = 03$

MATCHLINE -L- STA 27 + 50.00 SEE SHEET NO. 5