
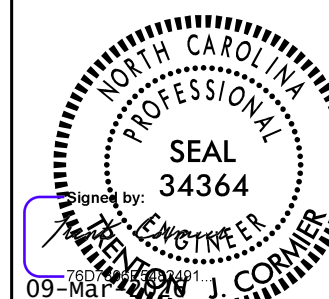


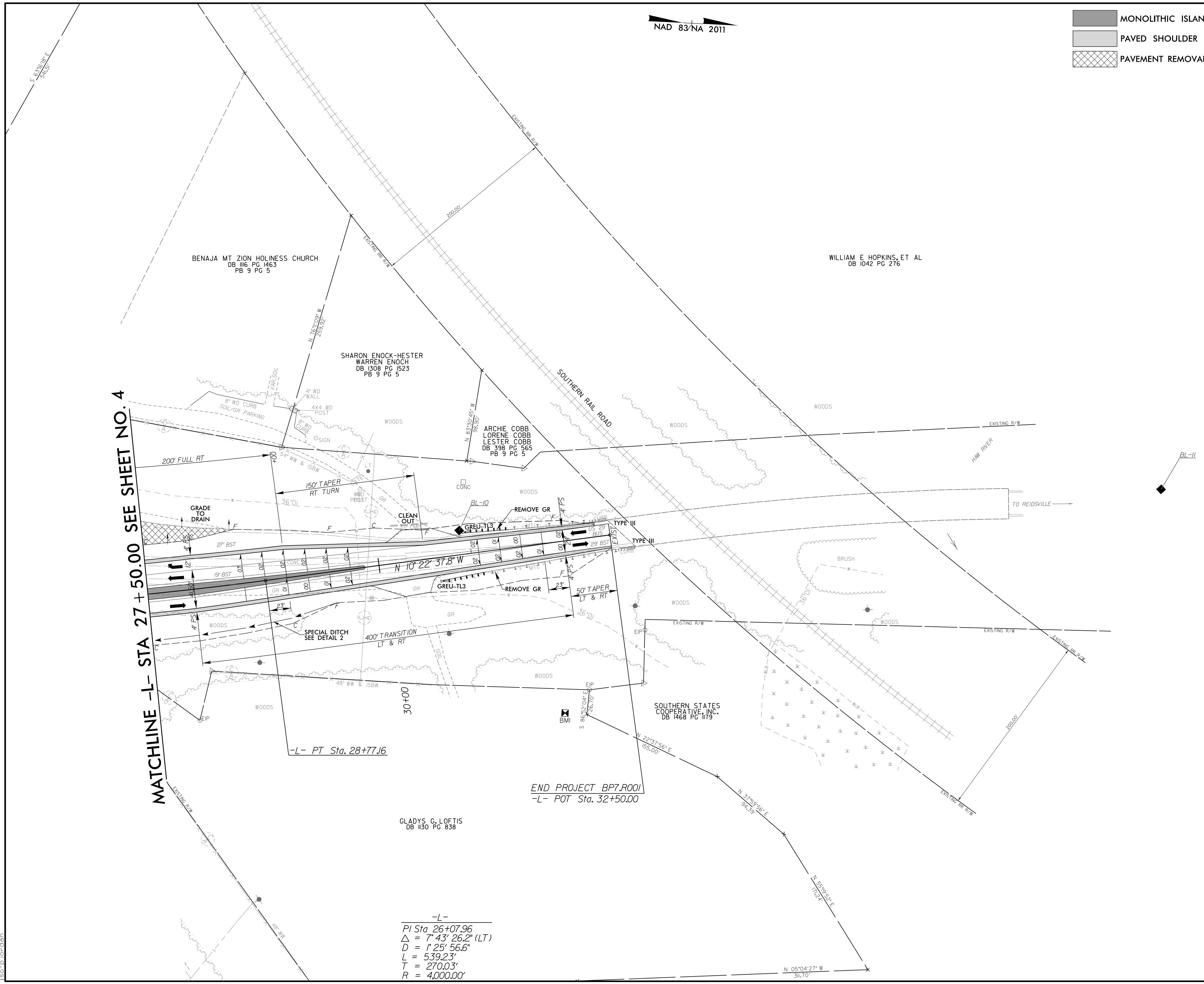


NAD 83/NA 2011

MONOLITHIC ISLAND  
 PAVED SHOULDER  
 PAVEMENT REMOVAL

PROJECT REFERENCE BP7.R001	SHEET NO. 5
ROADWAY DESIGN ENGINEER  MOTT MACDONALD, I & E, LLC LICENSE NO. F-0669	HYDRAULICS ENGINEER  TOMO ENGINEERING, PLLC LICENSE NO. P-2066
<b>DOCUMENT NOT CONSIDERED FINAL UNLESS ALL SIGNATURES COMPLETED</b>	
Prepared in the Office of: <div style="display: flex; justify-content: space-between; align-items: center; margin-top: 5px;"> <div style="text-align: center;">   <b>M</b>          MOTT          MACDONALD       </div> <div style="text-align: center;">   <b>T</b>          TOMO          ENGINEERING       </div> <div style="font-size: 8px;">         930 Main Campus Drive, Suite 200          Raleigh, NC 27606          (919) 552-2255          www.mottmac.com       </div> </div>	
FOR -L- PROFILE SEE SHEET 6 FOR MILLING DETAIL SEE SHEET 2B-3 FOR DRAINAGE DETAILS SEE SHEET 2D-1	



MATCHLINE -L- STA 27 + 50.00 SEE SHEET NO. 4

END PROJECT BP7.R001  
-L- POT Sta. 32+50.00

GLADYS G. LOFTIS  
DB #130 PG 838

-L-

PI Sta 26+07.96  
 $\Delta = 7' 43' 26.2''$  (LT)  
 $D = 1' 25' 56.6''$   
 $L = 539.23'$   
 $T = 270.03'$   
 $R = 4,000.00'$

3/9/2026 6:42:21 AM  
 c:\pwworking\hmm\raill\tronsst\jor-66165\d01810146\780023\_r-d4-psht5.dgn  
 ise-plordan