
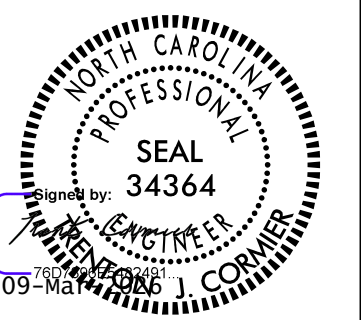




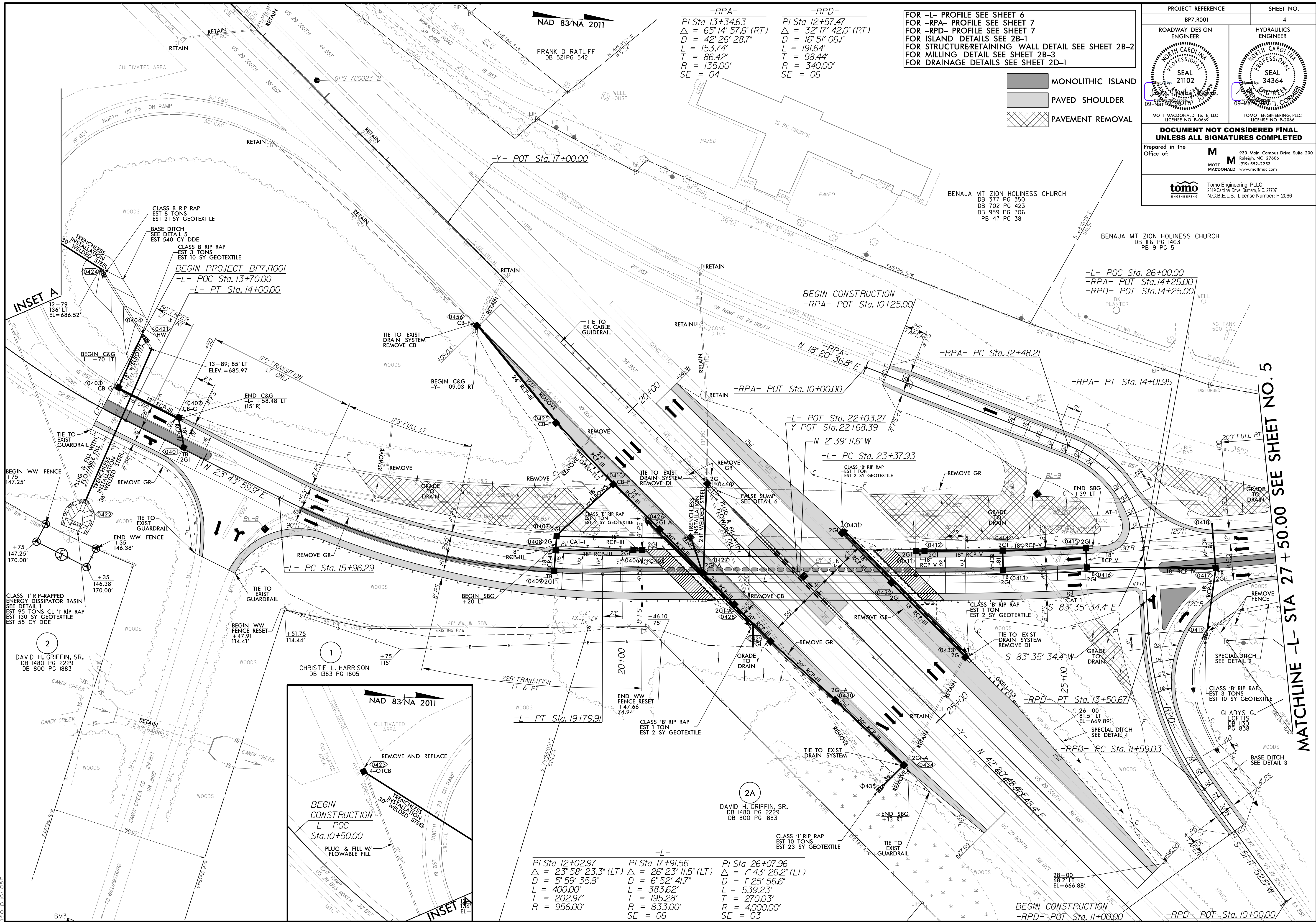
PROJECT REFERENCE		SHEET NO.	
BP7.R001		4	
ROADWAY DESIGN ENGINEER		HYDRAULICS ENGINEER	
			
<p><b>DOCUMENT NOT CONSIDERED FINAL</b>  <b>UNLESS ALL SIGNATURES COMPLETED</b></p>			
Prepared in the Office of:			
			
		<p>930 Main Campus Drive, Suite 200      Raleigh, NC 27606      (919) 552-2253      www.mottmac.com</p>	
		<p>2319 Cardinal Drive, Durham, N.C. 27707      N.C.B.E.L.S. License Number: P-2066</p>	

FOR -L- PROFILE SEE SHEET 6  
 FOR -RPA- PROFILE SEE SHEET 7  
 FOR -RPD- PROFILE SEE SHEET 7  
 FOR ISLAND DETAILS SEE 2B-1  
 FOR STRUCTURE/RETAINING WALL DETAIL SEE SHEET 2B-2  
 FOR MILLING DETAIL SEE SHEET 2B-3  
 FOR DRAINAGE DETAILS SEE SHEET 2D-1

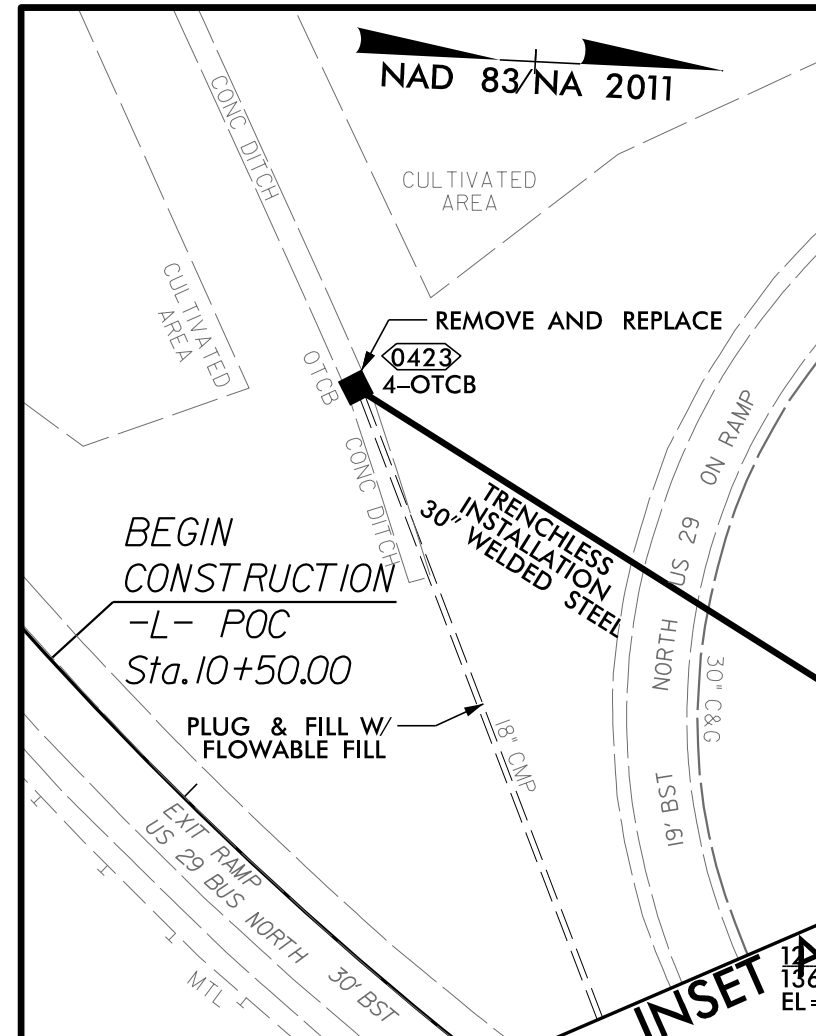
MONOLITHIC ISLAND  
 PAVED SHOULDER  
 PAVEMENT REMOVAL

**-RPA-**  
 PI Sta 13+34.63  
 $\Delta = 65^{\circ}14'57.6"$  (RT)  
 $D = 42'26'28.7"$   
 $L = 153.74'$   
 $T = 86.42'$   
 $R = 135.00'$   
 $SE = 04$

**-RPD-**  
 PI Sta 12+57.47  
 $\Delta = 32^{\circ}17'42.0"$  (RT)  
 $D = 16'51'06.1"$   
 $L = 191.64'$   
 $T = 98.44'$   
 $R = 340.00'$   
 $SE = 06$



**INSET A**



**-L-**

PI Sta 12+02.97  
 $\Delta = 23^{\circ}58'23.3"$  (LT)  
 $D = 5'59'35.8"$   
 $L = 400.00'$   
 $T = 202.97'$   
 $R = 956.00'$

PI Sta 17+91.56  
 $\Delta = 26^{\circ}23'11.5"$  (LT)  
 $D = 5'52'41.7"$   
 $L = 383.62'$   
 $T = 195.28'$   
 $R = 833.00'$   
 $SE = 06$

PI Sta 26+07.96  
 $\Delta = 7^{\circ}43'26.2"$  (LT)  
 $D = 1'43'56.6"$   
 $L = 539.23'$   
 $T = 270.03'$   
 $R = 4,000.00'$   
 $SE = 03$

MATCHLINE -L- STA 27+50.00 SEE SHEET NO. 5

3/9/2026 6:12:09 AM  
 c:\pwworking\hmm\raill\tr-enst\jor-66165\d0180146\780023\_r-d4\_psh4.dgn  
 ise:plordan