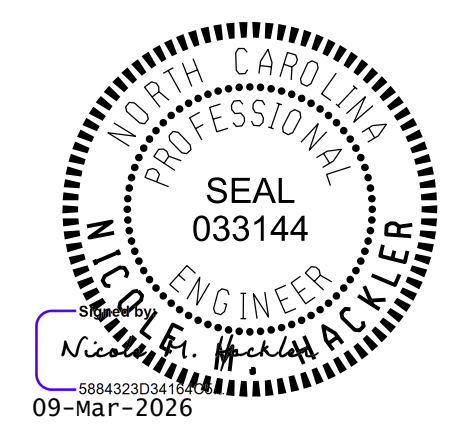


USE FLARE RATE AS THE CONTROL IF THE " N_1 " DISTANCE IS NOT OBTAINED.
 (" N_1 " IS BASED ON SHOULDER WIDTHS IN THE ROADWAY DESIGN MANUAL)
 SEE STD. 862.03 FOR STRUCTURE ANCHOR UNITS
 FOR POSTED SPEEDS \geq 45MPH USE GREU TYPE TL-3
 FOR POSTED SPEEDS $<$ 45MPH USE GREU TYPE TL-2
 GUARDRAIL LENGTH OF NEED (X) IS CALCULATED BASED ON THE AASHTO ROADSIDE DESIGN GUIDE.

STATE OF
 NORTH CAROLINA
 DEPT. OF TRANSPORTATION
 DIVISION OF HIGHWAYS
 RALEIGH, N.C.

ROADWAY DETAIL DRAWING FOR
GUARDRAIL PLACEMENT



LENGTHS AND OFFSETS FOR PROPOSED GUARDRAIL AT TWO LANE - TWO WAY LOCATIONS

SHEET 4 OF 15
862D01

DOCUMENT NOT CONSIDERED FINAL
 UNLESS ALL SIGNATURES COMPLETED

**CONTRACTS STANDARDS
 AND DEVELOPMENT UNIT**
 Office 919-707-6950 FAX 919-250-4119

SEE TITLE BLOCK

ORIGINAL BY: S.CALHOUN DATE: 7-25-2024
 MODIFIED BY: _____ DATE: _____
 CHECKED BY: _____ DATE: _____
 FILE SPEC.: _____