

15-702-60

TIP PROJECT: U-5743

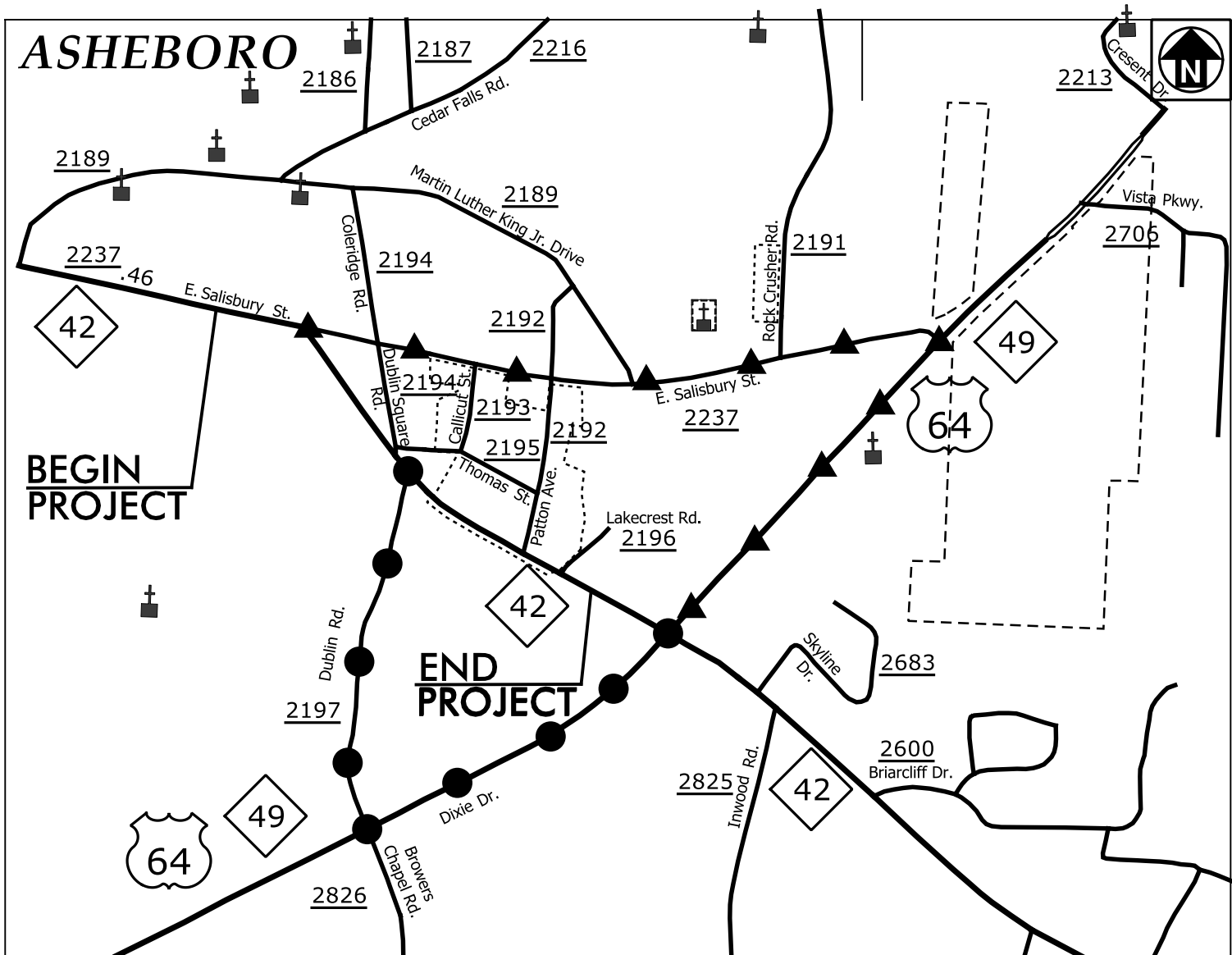
T.I.P. NO.	SHEET NO.
U-5743	UO-1

NOTE:
 ALL UTILITY WORK SHOWN ON THIS SHEET IS DONE BY OTHERS.
 NO PAYMENT WILL BE MADE TO THE CONTRACTOR FOR UTILITY WORK SHOWN ON THIS SHEET.

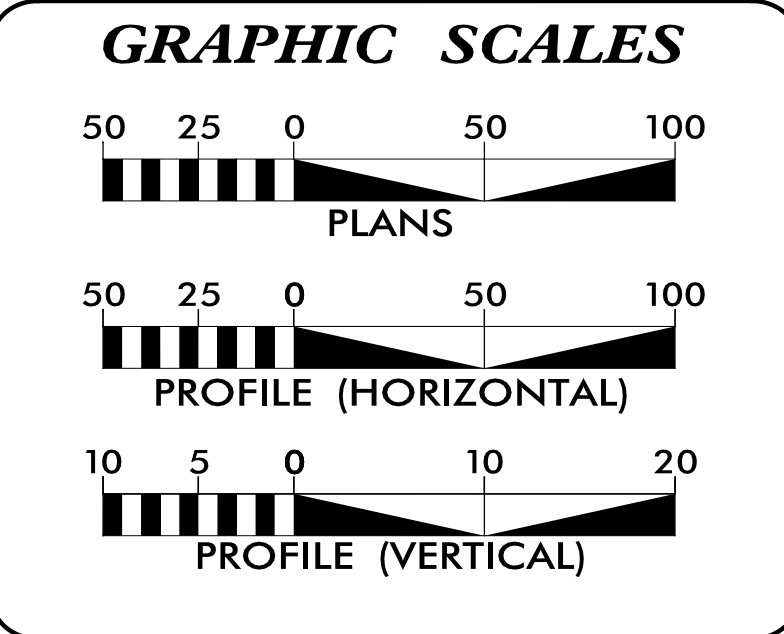
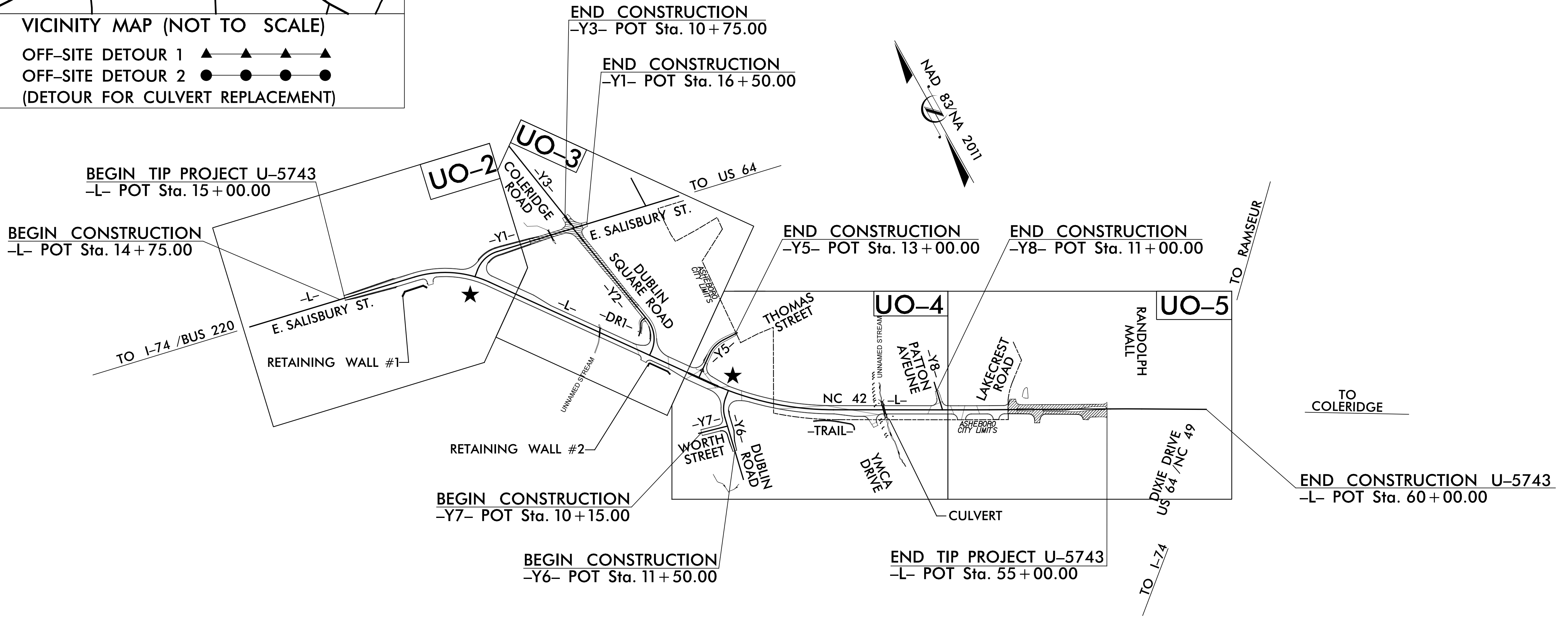
STATE OF NORTH CAROLINA
 DIVISION OF HIGHWAYS

**UTILITIES BY OTHERS PLANS
 RANDOLPH COUNTY**

LOCATION: NC 42 FROM SR 2237 (EAST SALISBURY STREET) TO NORTH OF US 64 / NC 49 (DIXIE DRIVE) IN ASHEBORO
TYPE OF WORK: UTILITY BY OTHERS RELOCATIONS



VICINITY MAP (NOT TO SCALE)
 OFF-SITE DETOUR 1 ▲▲▲▲▲
 OFF-SITE DETOUR 2 ●●●●●
 (DETOUR FOR CULVERT REPLACEMENT)



INDEX OF SHEETS

SHEET NO.:	DESCRIPTION:
UO-1	TITLE SHEET
UO-02 THRU UO-05	UBO PLAN SHEETS

UTILITY OWNERS WITH CONFLICTS

(A) POWER - DUKE ENERGY DISTRIBUTION
 (B) POWER - RANDOLPH EMC
 (C) TELEPHONE - BRIGHTSPEED
 (D) GAS - PIEDMONT NATURAL GAS
 (E) CATV - SPECTRUM

PREPARED IN THE OFFICE OF:

Wooten

120 North Boylan Avenue • Raleigh, NC 27603-1423
 (919) 828-0531 • thewootencompany.com
 License Number: F-0115

WEBB WHITE UTILITY PROJECT MANAGER
TOMMY MARTIN PROJECT UTILITY COORDINATOR

**DIVISION OF HIGHWAYS
 DIVISION 8**

121 DOT DRIVE
 CARTHAGE, NC 28327

MICHEAL RICKETTS DIVISION UTILITY ENGINEER
TRENT CAVINESS DIVISION UTILITY COORDINATOR

8/17/99

U:\2016 AM
Projects\Hatch_Mott\3160\U-5743 NC 42\CADD\U-5743_rdy\uti_Ub0.dgn

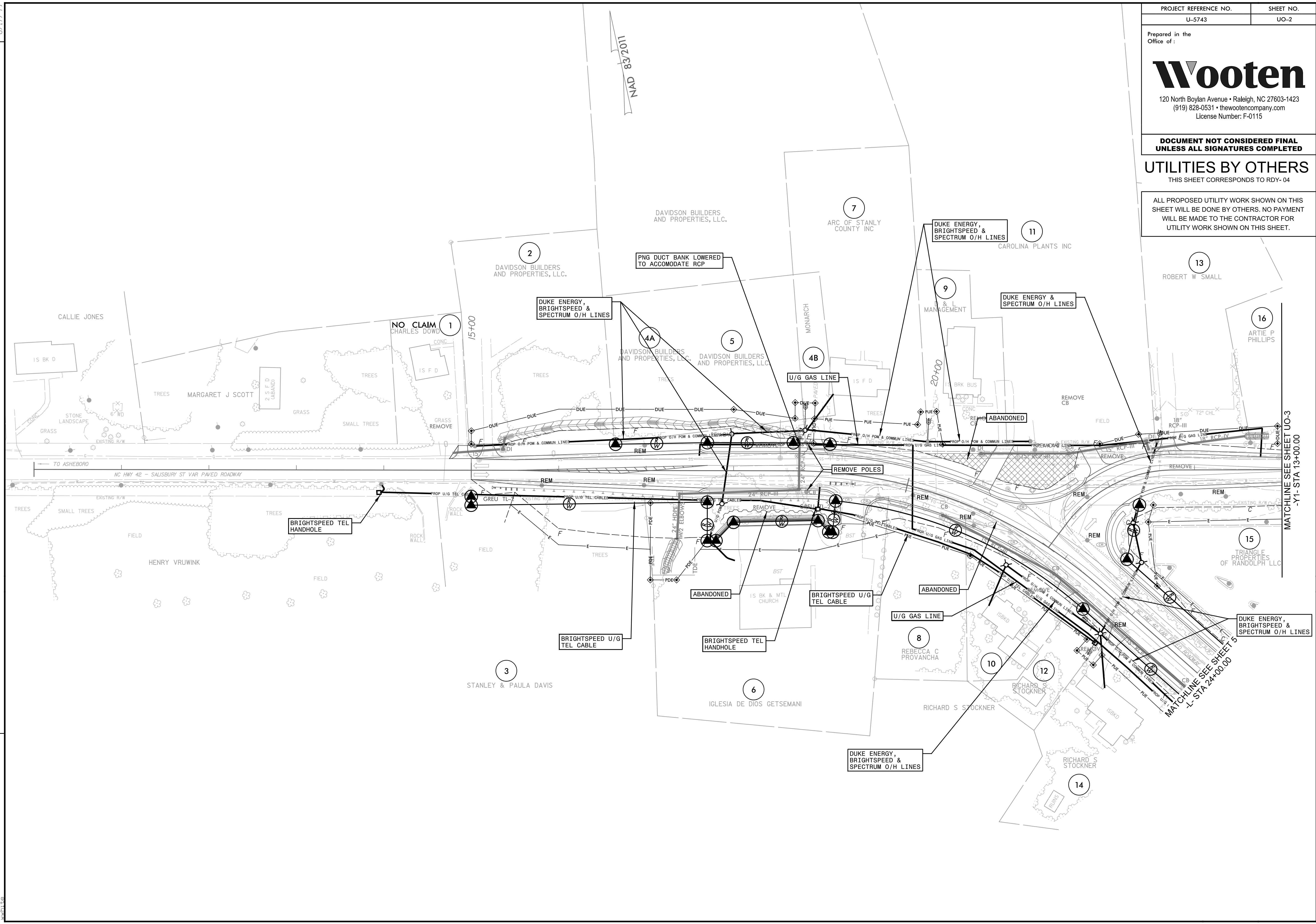
REVISIONS

PROJECT REFERENCE NO.	SHEET NO.
U-5743	UO-2
Prepared in the Office of:	
Wooten	
120 North Boylan Avenue • Raleigh, NC 27603-1423 (919) 828-0531 • thewootencompany.com License Number: F-0115	

**DOCUMENT NOT CONSIDERED FINAL
UNLESS ALL SIGNATURES COMPLETED**

UTILITIES BY OTHERS
THIS SHEET CORRESPONDS TO RDY-04

ALL PROPOSED UTILITY WORK SHOWN ON THIS SHEET WILL BE DONE BY OTHERS. NO PAYMENT WILL BE MADE TO THE CONTRACTOR FOR UTILITY WORK SHOWN ON THIS SHEET.



MATCHLINE SEE SHEET UO-3
-Y1- STA 13+00.00

MATCHLINE SEE SHEET 5
-L- STA 24+00.00

NAD 83/2011

Prepared in the Office of:



120 North Boylan Avenue • Raleigh, NC 27603-1423
 (919) 828-0531 • thewootencompany.com
 License Number: F-0115

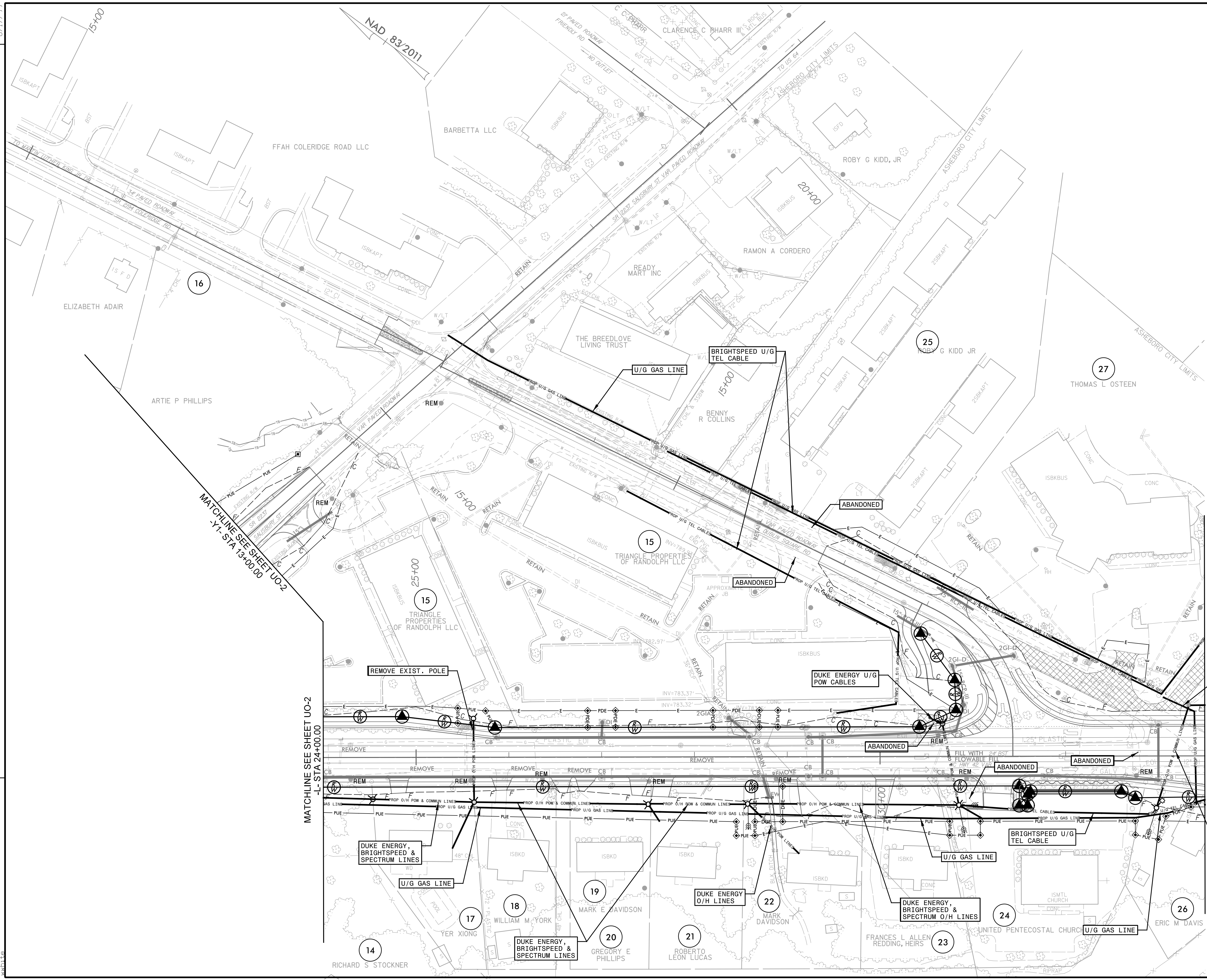
**DOCUMENT NOT CONSIDERED FINAL
 UNLESS ALL SIGNATURES COMPLETED**

UTILITIES BY OTHERS

THIS SHEET CORRESPONDS TO RDY-05

ALL PROPOSED UTILITY WORK SHOWN ON THIS SHEET WILL BE DONE BY OTHERS. NO PAYMENT WILL BE MADE TO THE CONTRACTOR FOR UTILITY WORK SHOWN ON THIS SHEET.

8/17/99
 REVISIONS
 I:\Projects\Hatch_Mott_MacDonald\3160\U-5743 NC 42\CADD\U-5743_rdy_utl_Ub0.dgn
 11:30 AM
 H:\Projects\Hatch_Mott_MacDonald\3160\U-5743 NC 42\CADD\U-5743_rdy_utl_Ub0.dgn



MATCHLINE SEE SHEET UO-2
 -Y1- STA 13+00.00

MATCHLINE SEE SHEET UO-2
 -L- STA 24+00.00

MATCHLINE SEE SHEET UO-4
 -L- STA 33+50.00

Prepared in the Office of:



120 North Boylan Avenue • Raleigh, NC 27603-1423
 (919) 828-0531 • thewootencompany.com
 License Number: F-0115

**DOCUMENT NOT CONSIDERED FINAL
 UNLESS ALL SIGNATURES COMPLETED**

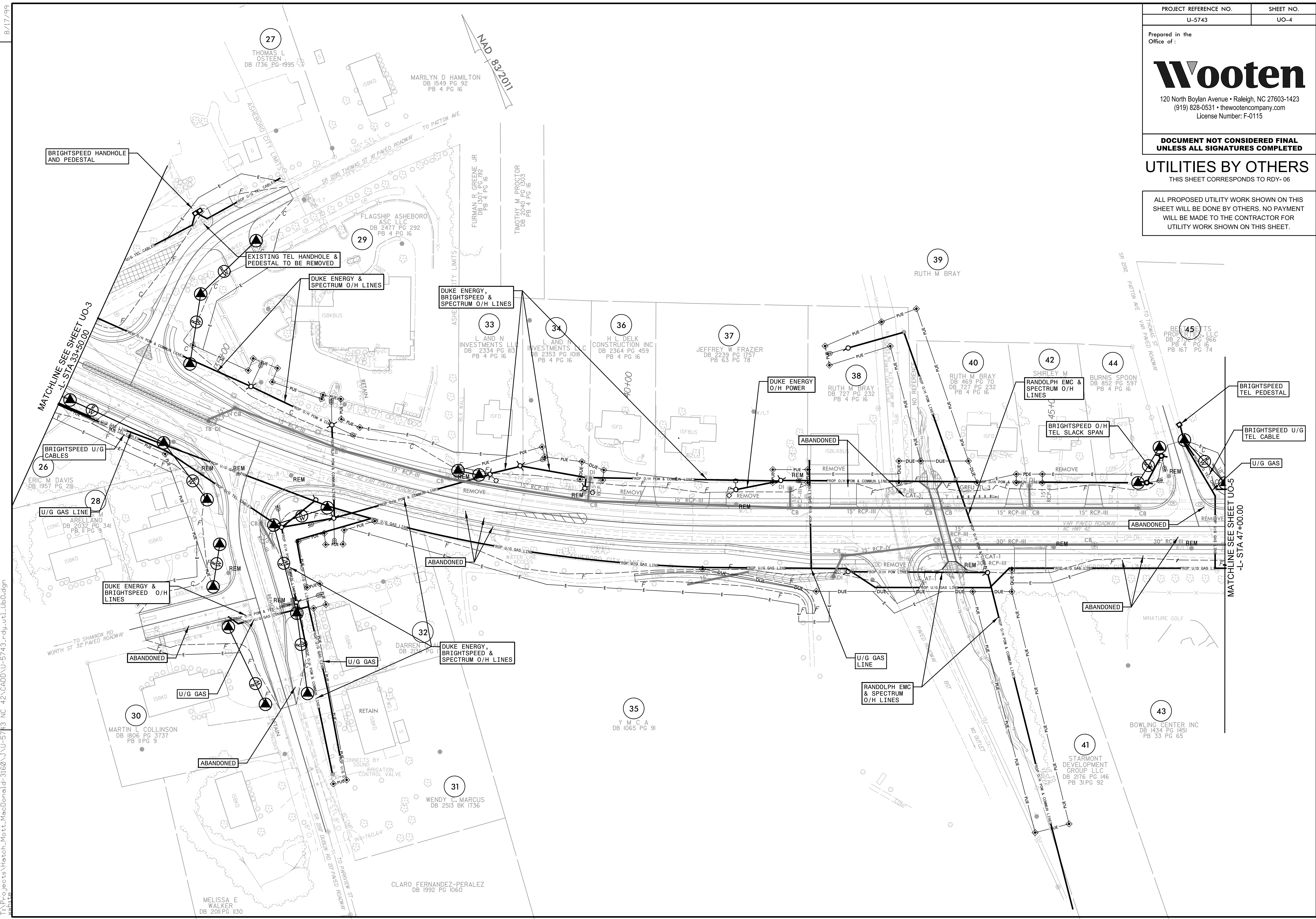
UTILITIES BY OTHERS

THIS SHEET CORRESPONDS TO RDY- 06

ALL PROPOSED UTILITY WORK SHOWN ON THIS SHEET WILL BE DONE BY OTHERS. NO PAYMENT WILL BE MADE TO THE CONTRACTOR FOR UTILITY WORK SHOWN ON THIS SHEET.

8/17/2019

REVISIONS



I:\5158 AM\Projects\Hatch_Mett_MacDonna\U-5743_NC_42\CADD\U-5743_rdy_uti_1_b0.dgn
 11:51:58 AM
 J:\5158 AM\Projects\Hatch_Mett_MacDonna\U-5743_NC_42\CADD\U-5743_rdy_uti_1_b0.dgn
 8/17/2019

Prepared in the Office of:



120 North Boylan Avenue • Raleigh, NC 27603-1423
(919) 828-0531 • thewootencompany.com
License Number: F-0115

**DOCUMENT NOT CONSIDERED FINAL
UNLESS ALL SIGNATURES COMPLETED**

UTILITIES BY OTHERS

THIS SHEET CORRESPONDS TO RDY- 07

ALL PROPOSED UTILITY WORK SHOWN ON THIS SHEET WILL BE DONE BY OTHERS. NO PAYMENT WILL BE MADE TO THE CONTRACTOR FOR UTILITY WORK SHOWN ON THIS SHEET.

NAD 83/2011

BELK OF ASHEBORO NC INC
DB 1023 PG 272
PB 27 PG 74
PB 23 PG 5-6

RANDOLPH COUNTY FARM BUREAU, INC
DB 1937 PG 634
PB 27 PG 74
PB 23 PG 5-6

REALTY INCOME CORPORATION
DB 1548 PG 470
PB 26 PG 17

MCDONALDS USA LLC
DB 2310 PG 157
PB 27 PG 74
PB 23 PG 6
PB 30 PG 41

CLARK RANDOLPH EAT LLC
DB 2441 PG 708

SPECIALTY SHOPS II ON 42 OWNERS ASSOCIATION
DB 1333 PG 1582
PB 35 PG 77

CROSSROADS ASHEBORO STATION LLC
DB 1874 PG 2787

MCKENZIE PROPERTIES INVESTMENT LLC
DB 2200 PG 674
PB 48 PG 56
PB 40 PG 1
PB 35 PG 35

SPECIALTY SHOPS II ON 42 OWNERS ASSOCIATION
DB 1333 PG 1579
PB 36 PG 18
PB 35 PG 78

BEST BETTS PROPERTIES, LLC
DB 2732 PG 966
PB 4 PG 16
PB 167 PG 74

BEST BETTS PROPERTIES, LLC
DB 2732 PG 966
PB 4 PG 16
PB 167 PG 74

BOWLING CENTER INC
DB 1434 PG 1451
PB 33 PG 65

NO CLAIM
SPECIALTY SHOPS II ON 42 OWNERS ASSOCIATION
DB 1401 PG 283
PB 40 PG 1
PB 35 PG 35
PB 48 PG 56

MATCHLINE SEE SHEET UO-4
-L- STA 47+00.00

REVISIONS

P:\06\25\jecs\Hatch_Mott_MacDonald\U-5743_NC_42\CADD\U-5743_rdy_utl_1\ub0.dgn
8/17/99

