

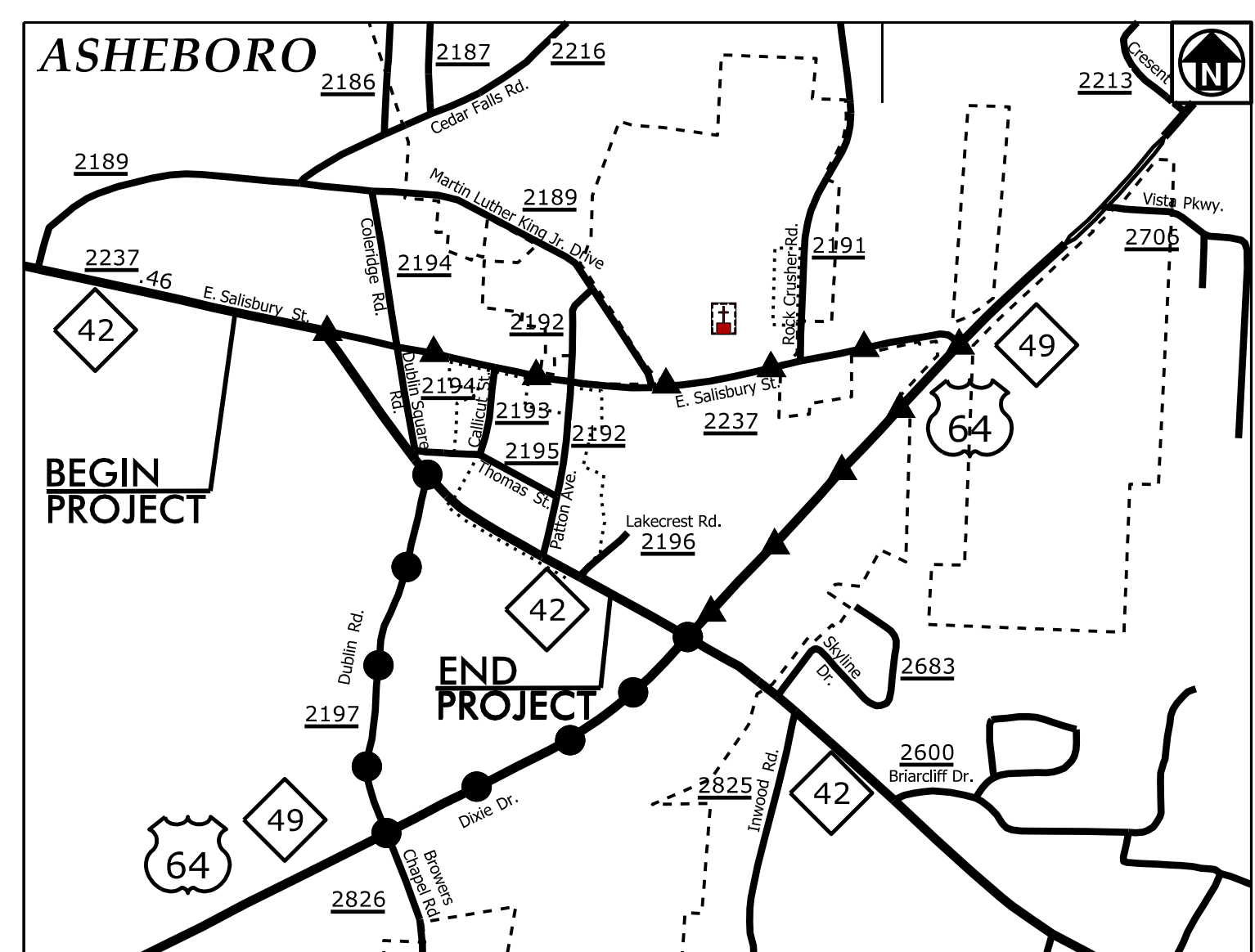
STATE	STATE PROJECT REFERENCE NO.	SHEET NO.	TOTAL SHEETS
N.C.	U-5743	EC-1	
STATE PROJ. NO.	F.A. PROJ. NO.	DESCRIPTION	
50165.1.1		P.E.	
50165.2.1		RW	
50165.2.2		UTL.	

TIP PROJECT: U-5743

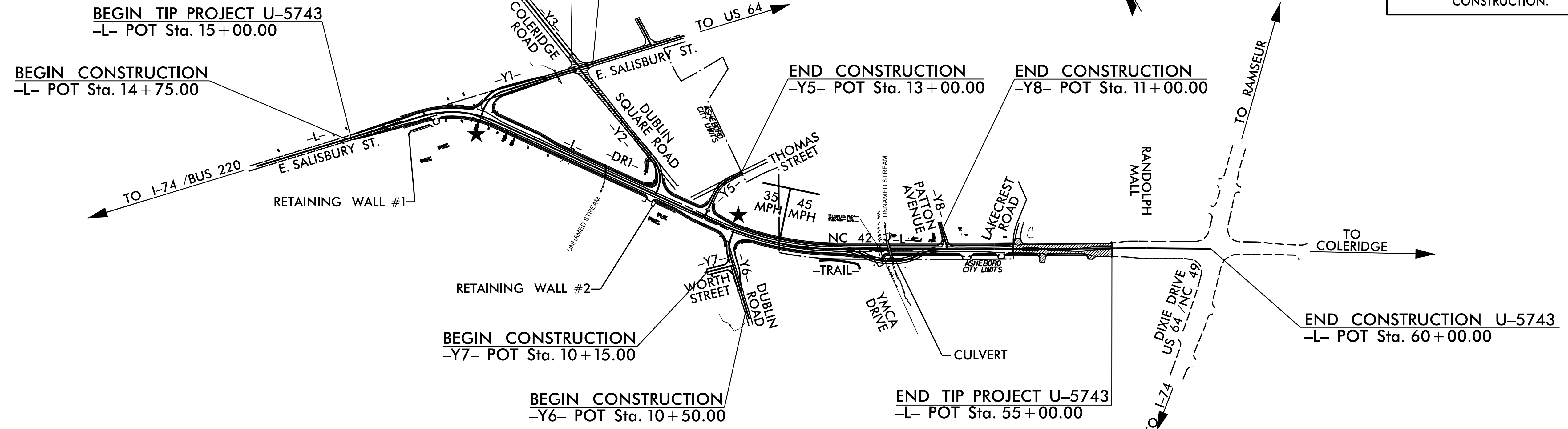
STATE OF NORTH CAROLINA
DIVISION OF HIGHWAYS
**PLAN FOR PROPOSED
HIGHWAY EROSION CONTROL**

RANDOLPH COUNTY

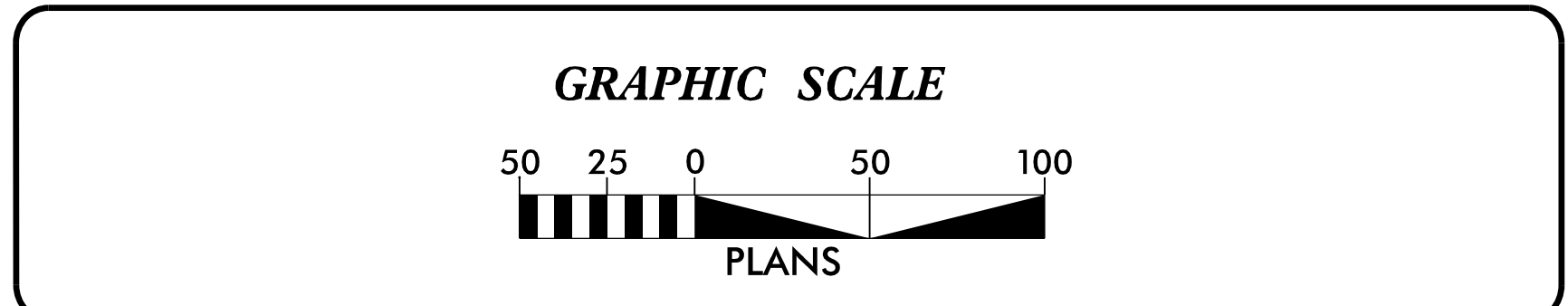
NC 42 FROM SR 2237 (EAST SALISBURY STREET) TO NORTH
OF US 64 / NC 49 (DIXIE DRIVE) IN ASHEBORO
TYPE OF WORK: DRAINAGE, GRADING, PAVING, SIGNALS AND CULVERTS



VICINITY MAP (NOT TO SCALE)
OFF-SITE DETOUR 1 ▲▲▲▲▲▲▲▲
OFF-SITE DETOUR 2 ●●●●●●●●
(DETOUR FOR CULVERT REPLACEMENT)



THIS PROJECT CONTAINS
EROSION CONTROL PLANS
FOR CLEARING AND
GRUBBING PHASE OF
CONSTRUCTION.



THESE EROSION AND SEDIMENT CONTROL PLANS COMPLY
WITH THE REGULATIONS SET FORTH BY THE
NCG-010000 GENERAL STORMWATER CONSTRUCTION PERMIT ISSUED BY
THE NORTH CAROLINA DEPARTMENT OF ENVIRONMENTAL
QUALITY DIVISION OF ENERGY, MINERAL, AND
LAND RESOURCES.



Prepared in the Office of:
HDR Engineering, Inc. of the Carolinas
555 Fayetteville St, Suite 900
Raleigh, N.C. 27601
N.C.B.E.L.S. License Number: F-0116
2024 STANDARD SPECIFICATIONS
Designed by:
MICHAEL MCNAMARA, PE 4065
NAME LEVEL III CERTIFICATION NO.

Roadway Standard Drawings

The "Roadway Standard Drawings"- Roadway Design Unit - N. C.
Department of Transportation - Raleigh, N. C., dated January 2024
and the latest revision thereto are applicable to this project and by
reference hereby are considered a part of these plans.

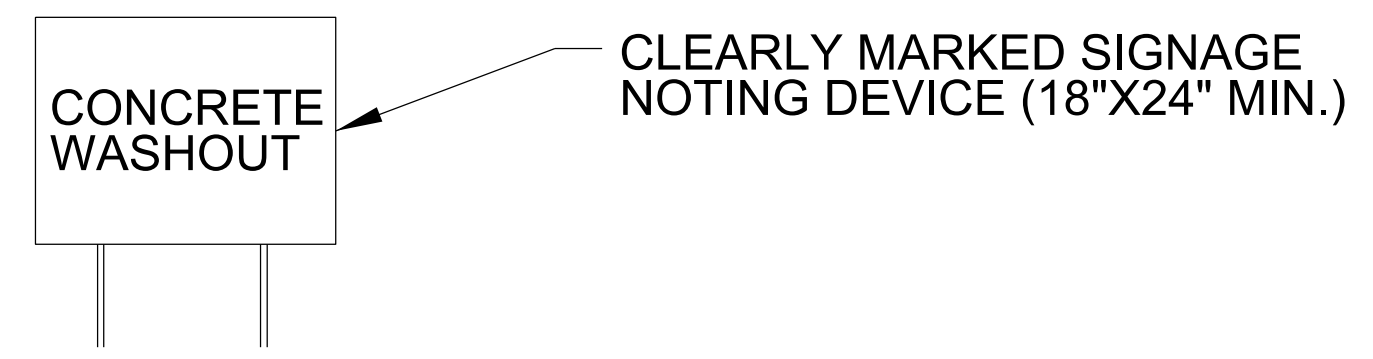
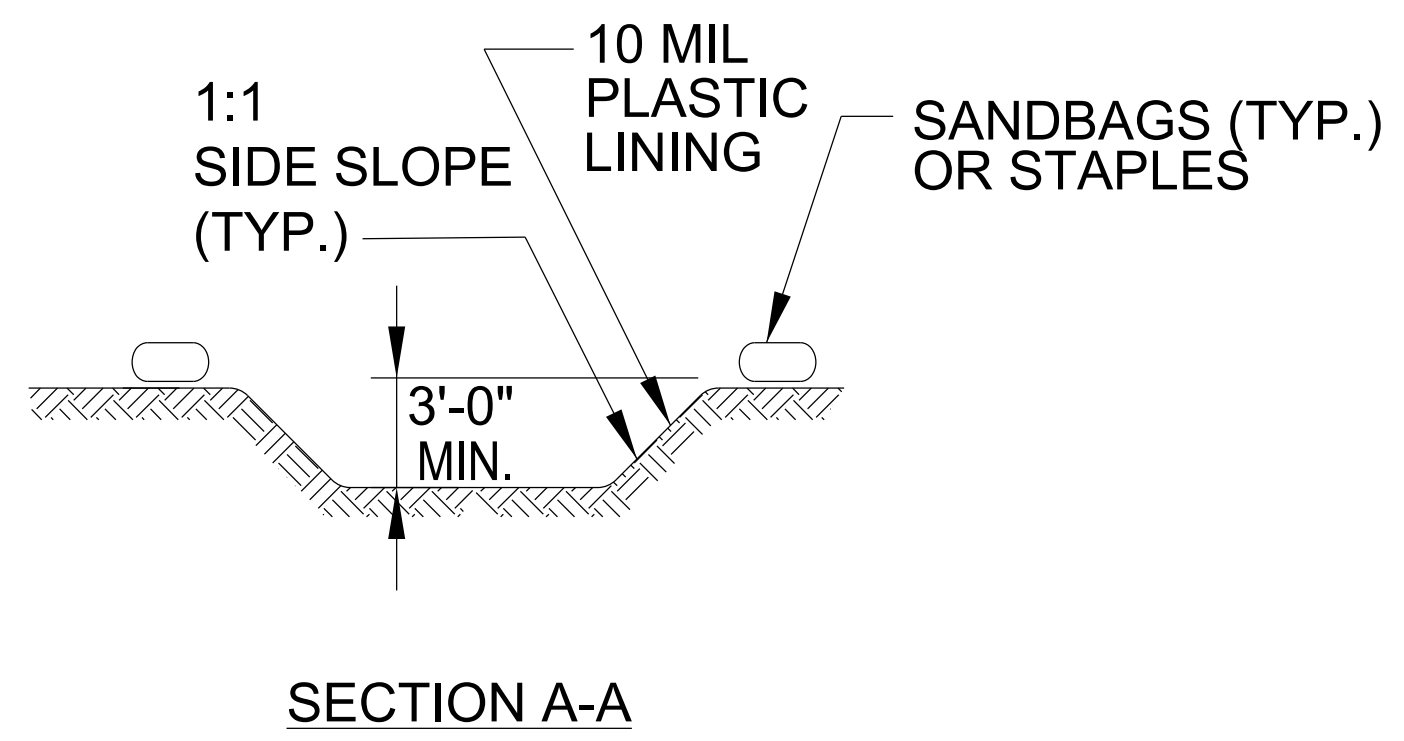
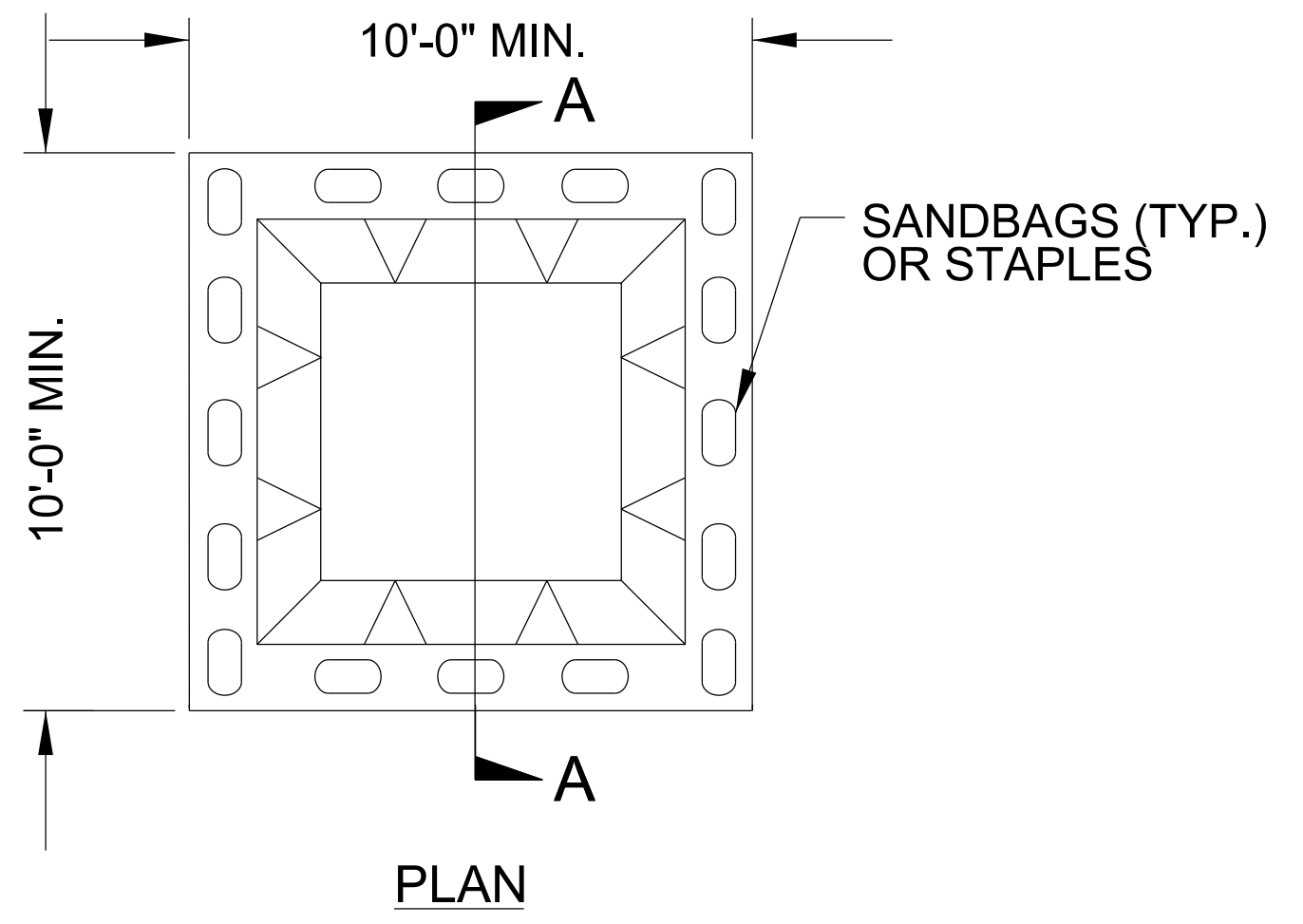
5/14/24 PM 1:01:10 U:\U-5743.ec.tsh.dgn
HDR ENGINEERING, INC.

DIVISION OF HIGHWAYS STATE OF NORTH CAROLINA

EROSION & SEDIMENT CONTROL LEGEND

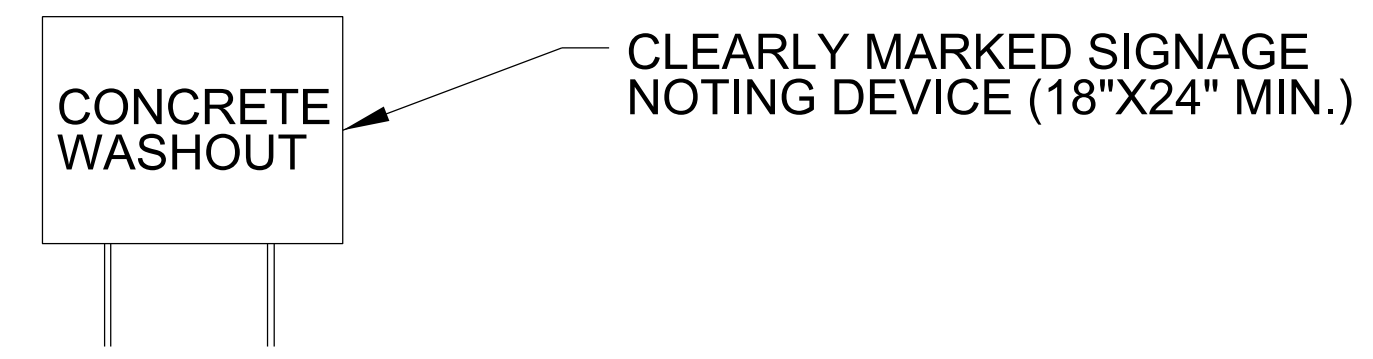
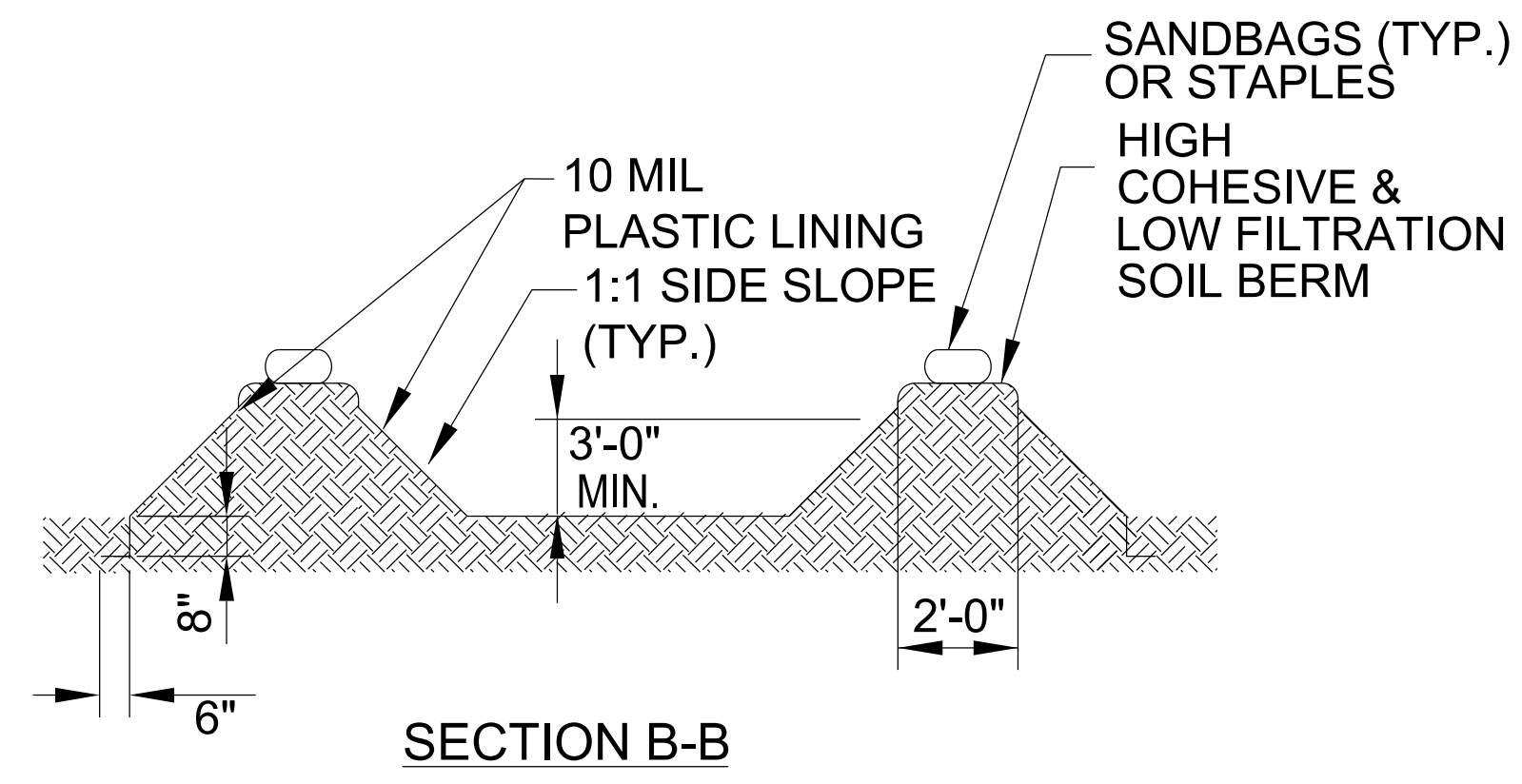
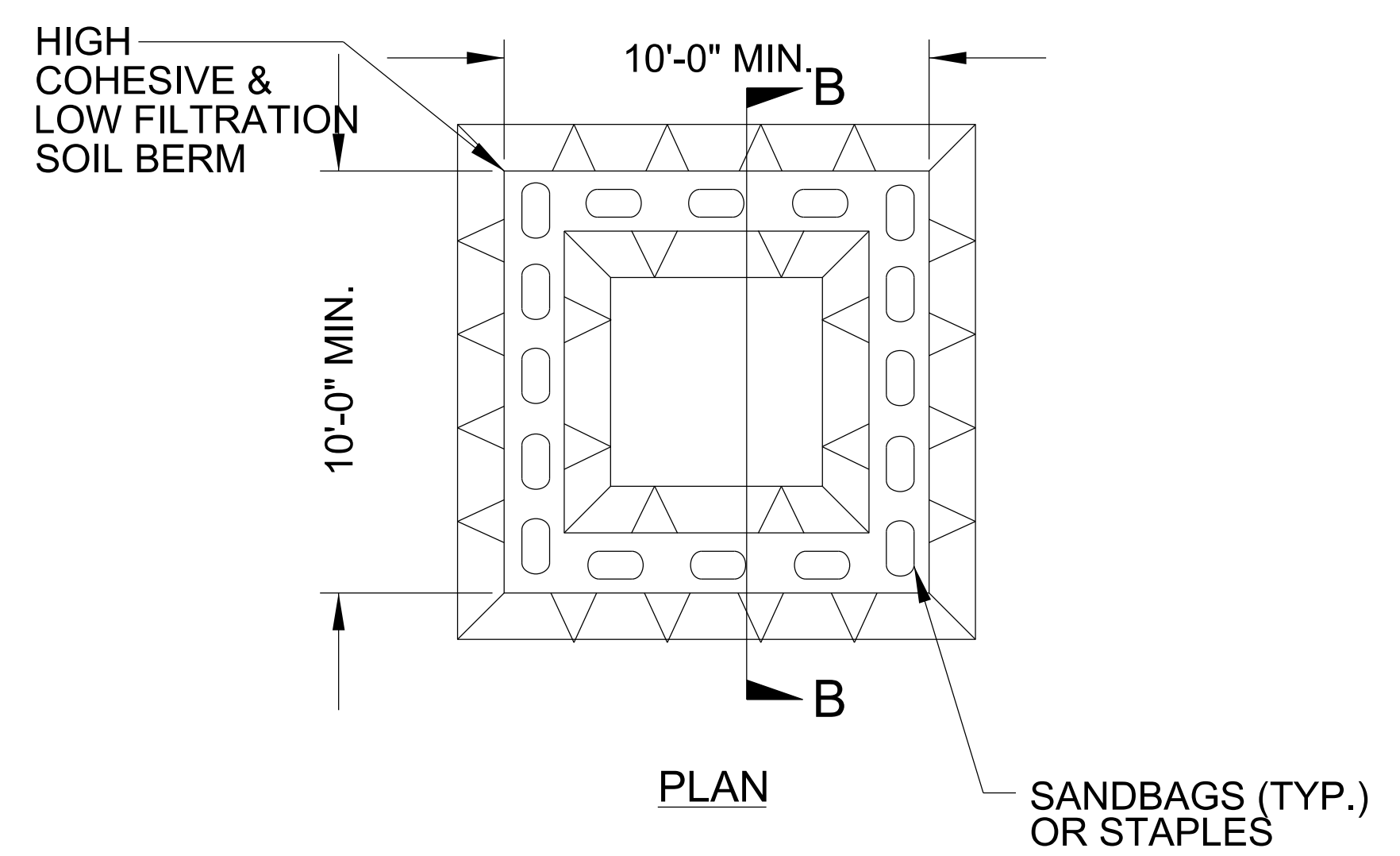
Std. #	Description	Symbol	Std. #	Description	Symbol
1605.01	Temporary Silt Fence		1633.01	Temporary Rock Silt Check Type A	
1606.01	Special Sediment Control Fence		1633.02	Temporary Rock Silt Check Type B	
1622.01	Temporary Berms and Slope Drains		1633.03	Temporary Rock Silt Check Type A with Excelsior Matting and Flocculant	
1630.02	Silt Basin Type B		1634.01	Temporary Rock Sediment Dam Type A	
1630.03	Temporary Silt Ditch		1634.02	Temporary Rock Sediment Dam Type B	
1630.04	Stilling Basin		1635.01	Rock Pipe Inlet Sediment Trap Type A	
1630.05	Temporary Diversion		1635.02	Rock Pipe Inlet Sediment Trap Type B	
1630.06	Special Stilling Basin		1636.01	Excelsior Wattle Check	
1630.07	Skimmer Basin		1636.01	Excelsior Wattle Check with Flocculant	
1630.08	Tiered Skimmer Basin		1636.01	Coir Fiber Wattle Check	
1630.09	Earthen Dam with Skimmer		1636.01	Coir Fiber Wattle Check with Flocculant	
	Infiltration Basin		1636.02	Silt Fence Excelsior Wattle Break	
	Rock Inlet Sediment Trap:			Silt Fence Coir Fiber Wattle Break	
1632.01	Type A		1636.03	Excelsior Wattle Barrier	
1632.02	Type B		1636.03	Coir Fiber Wattle Barrier	
1632.03	Type C				

ONSITE CONCRETE WASHOUT STRUCTURE WITH LINER



BELOW GRADE WASHOUT STRUCTURE
NOT TO SCALE

- NOTES:**
1. ACTUAL LOCATION DETERMINED IN FIELD
 2. THE CONCRETE WASHOUT STRUCTURES SHALL BE MAINTAINED WHEN THE LIQUID AND/OR SOLID REACHES 75% OF THE STRUCTURES CAPACITY TO PROVIDE ADEQUATE HOLDING CAPACITY WITH A MINIMUM 12 INCHES OF FREEBOARD.
 3. CONCRETE WASHOUT STRUCTURE NEEDS TO BE CLEARLY MARKED WITH SIGNAGE NOTING DEVICE.



ABOVE GRADE WASHOUT STRUCTURE
NOT TO SCALE

- NOTES:**
1. ACTUAL LOCATION DETERMINED IN FIELD
 2. THE CONCRETE WASHOUT STRUCTURES SHALL BE MAINTAINED WHEN THE LIQUID AND/OR SOLID REACHES 75% OF THE STRUCTURES CAPACITY TO PROVIDE ADEQUATE HOLDING CAPACITY WITH A MINIMUM 12 INCHES OF FREEBOARD.
 3. CONCRETE WASHOUT STRUCTURE NEEDS TO BE CLEARLY MARKED WITH SIGNAGE NOTING DEVICE.

DIVISION OF HIGHWAYS
STATE OF NORTH CAROLINA

SOIL STABILIZATION TIMEFRAMES

<i>SITE DESCRIPTION</i>	<i>STABILIZATION TIME</i>	<i>TIMEFRAME EXCEPTIONS</i>
PERIMETER DIKES, SWALES, DITCHES AND SLOPES	7 DAYS	NONE
HIGH QUALITY WATER (HQW) ZONES	7 DAYS	NONE
SLOPES STEEPER THAN 3:1	7 DAYS	IF SLOPES ARE 10' OR LESS IN LENGTH AND ARE NOT STEEPER THAN 2:1, 14 DAYS ARE ALLOWED.
SLOPES 3:1 TO 4:1	14 DAYS	7 DAYS FOR SLOPES GREATER THAN 50' IN LENGTH WITH SLOPES STEEPER THAN 4:1. 7 DAYS FOR PERIMETER DIKES, SWALES, DITCHES PERIMETER SLOPES, AND HQW ZONES
ALL OTHER AREAS WITH SLOPES FLATTER THAN 4:1	14 DAYS	7 DAYS FOR PERIMETER DIKES, SWALES, DITCHES PERIMETER SLOPES, AND HQW ZONES

CLEARING AND GRUBBING
EROSION CONTROL FOR
CONSTRUCTION SHEET 4

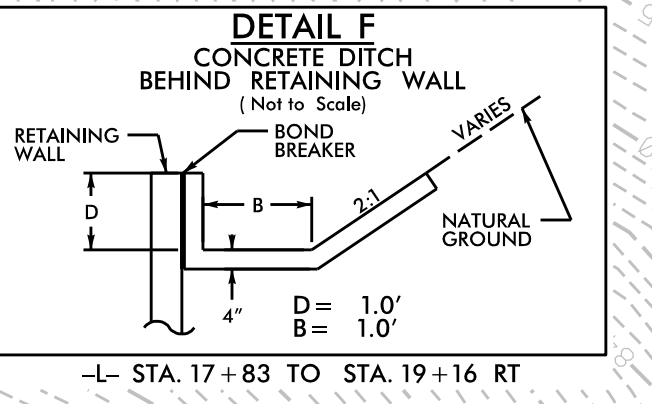
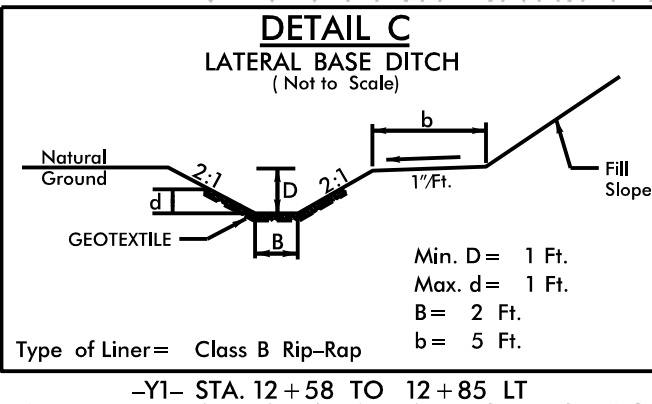
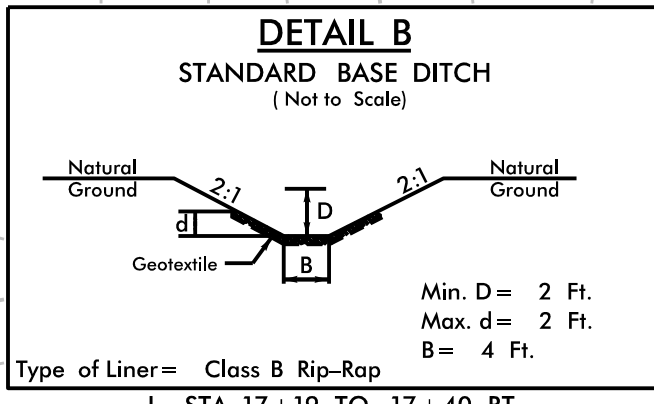
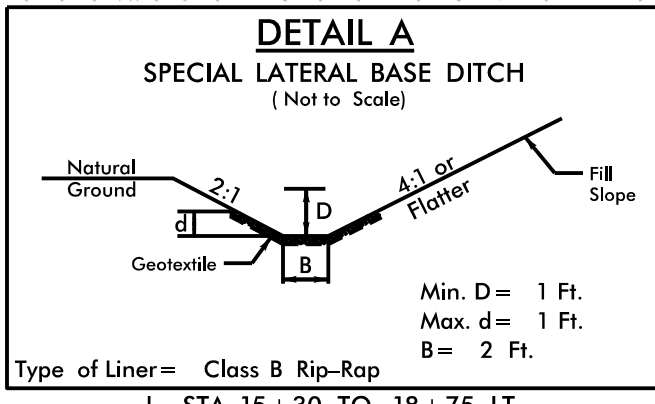
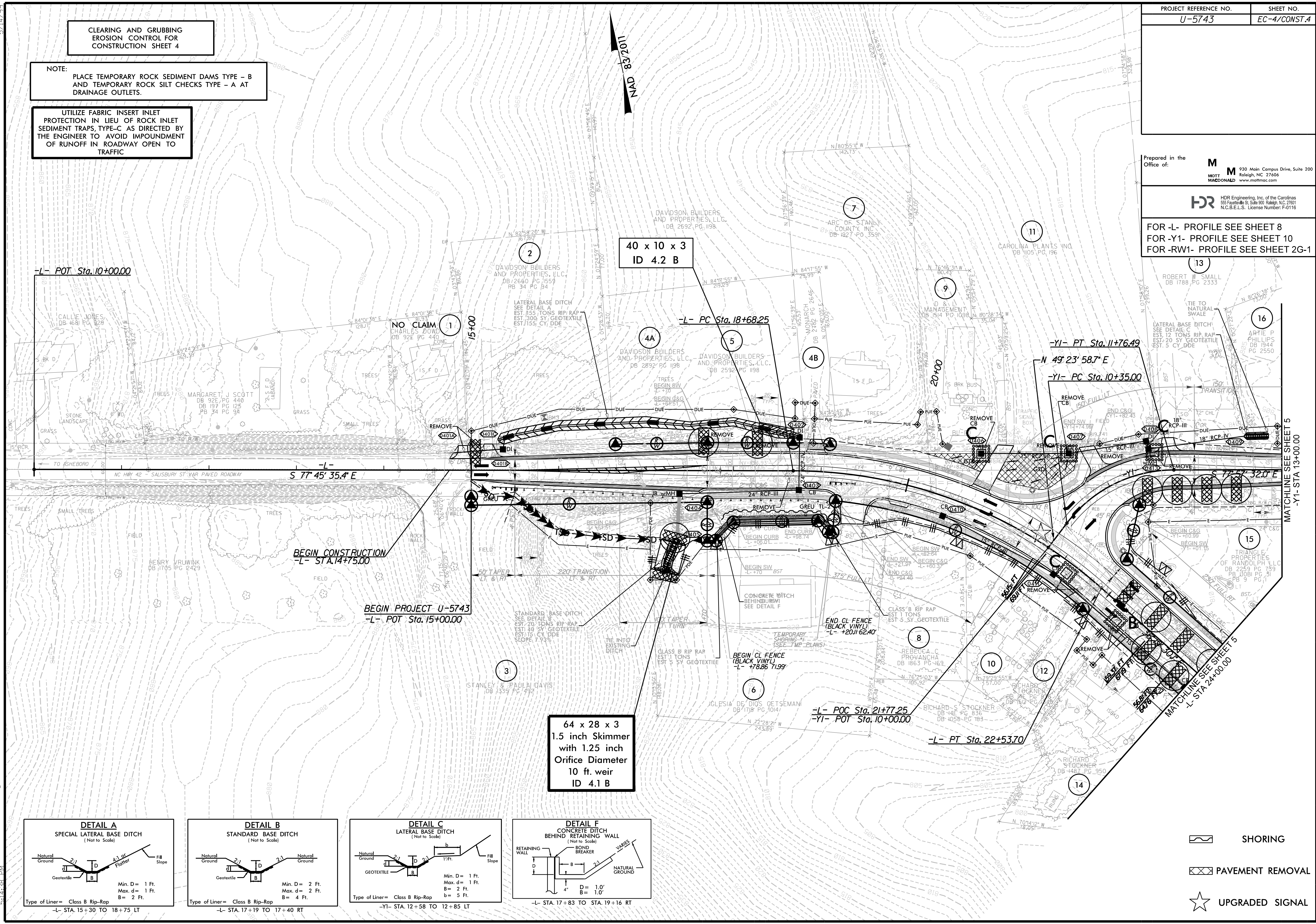
NOTE:
PLACE TEMPORARY ROCK SEDIMENT DAMS TYPE - B
AND TEMPORARY ROCK SILT CHECKS TYPE - A AT
DRAINAGE OUTLETS.

UTILIZE FABRIC INSERT INLET
PROTECTION IN LIEU OF ROCK INLET
SEDIMENT TRAPS, TYPE-C AS DIRECTED BY
THE ENGINEER TO AVOID IMPOUNDMENT
OF RUNOFF IN ROADWAY OPEN TO
TRAFFIC

Prepared in the Office of:
M MOTT MACDONALD
930 Main Campus Drive, Suite 200
Raleigh, NC 27606
www.mottmac.com

HDR HDR Engineering, Inc. of the Carolinas
555 Fayetteville St., Suite 900, Raleigh, NC 27601
N.C.B.E.L.S. License Number: F-0116

FOR -L- PROFILE SEE SHEET 8
FOR -Y1- PROFILE SEE SHEET 10
FOR -RW1- PROFILE SEE SHEET 2G-1



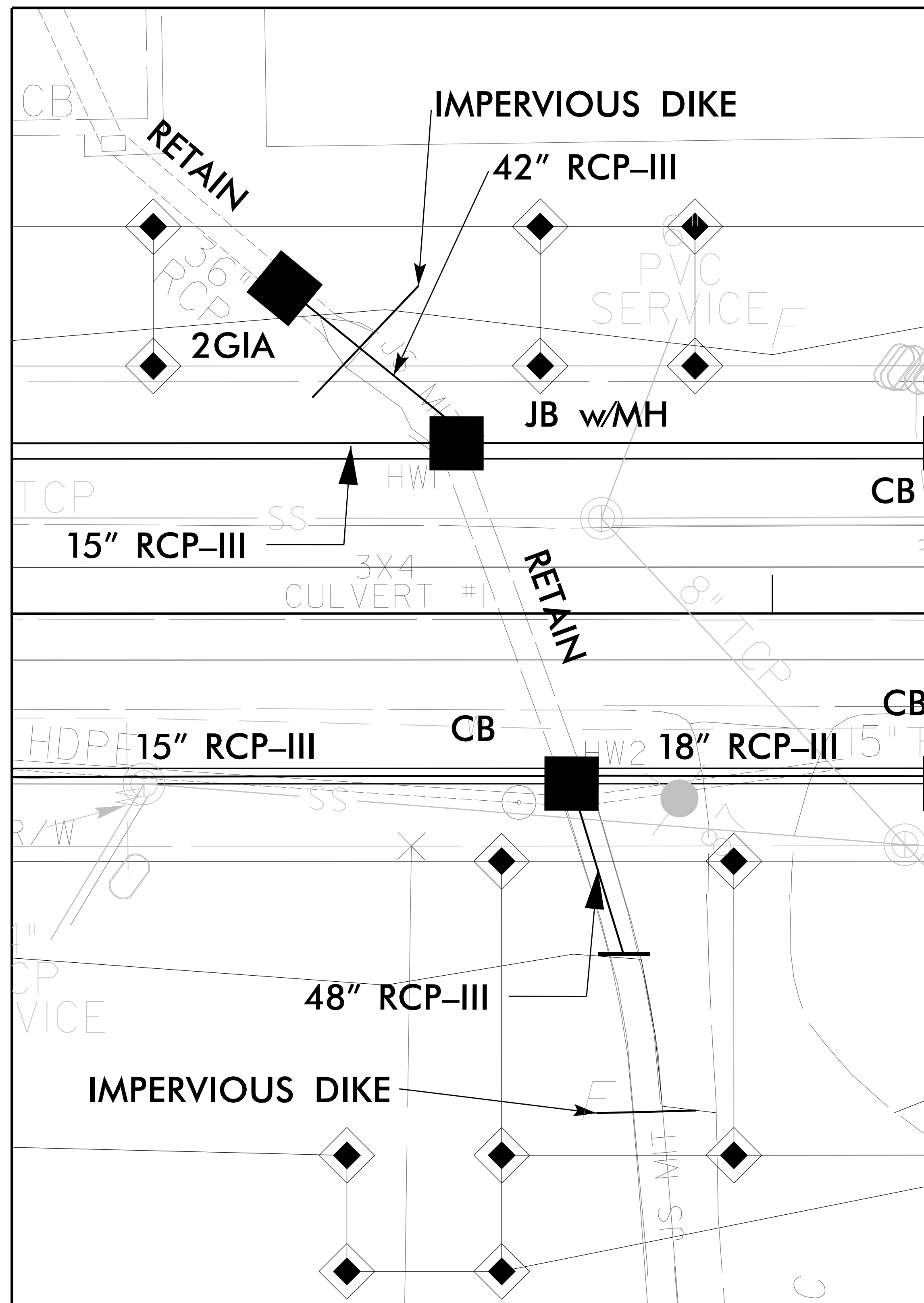
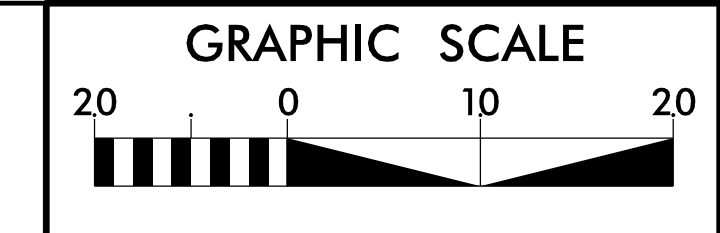
64 x 28 x 3
1.5 inch Skimmer
with 1.25 inch
Orifice Diameter
10 ft. weir
ID 4.1 B

40 x 10 x 3
ID 4.2 B

- SHORING
- PAVEMENT REMOVAL
- UPGRADED SIGNAL

3/31/2026 10:41:04 U-5743_EC_PSH.dgn

1 @ 3' x 4' RCBC CULVERT EXTENSION CONSTRUCTION SEQUENCE



CULVERT PHASING

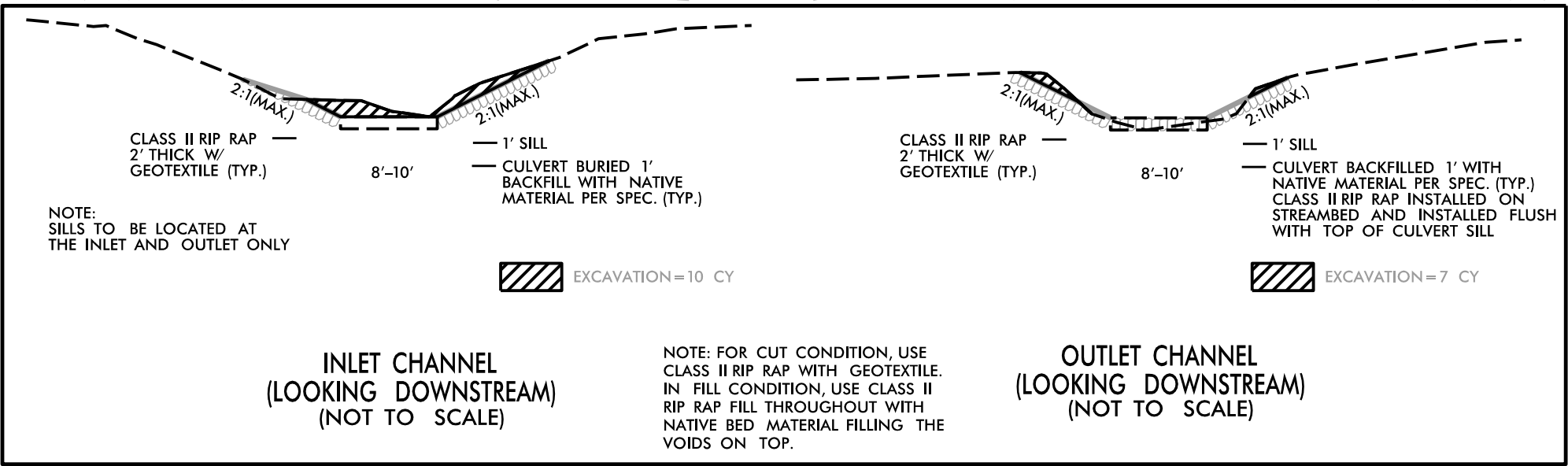
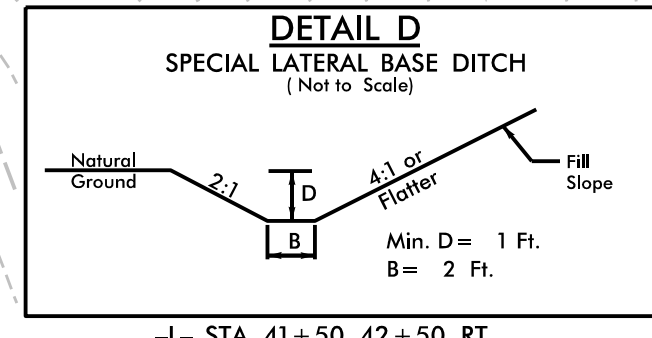
PHASE 1

- 1.) INSTALL 2GIA AND 11' OF 42" RCP.
- 2.) INSTALL ALL TEMPORARY SEDIMENT CONTROL DEVICES NECESSARY FOR CULVERT CONSTRUCTION.
- 3.) INSTALL SPECIAL STILLING BASIN WITHIN PROJECT RIGHT-OF-WAY. PUMP ALL EFFLUENT INTO SPECIAL STILLING BASIN.
- 4.) INSTALL IMPERVIOUS DIKES AND UTILIZE TEMPORARY PUMP(S) TO DIVERT FLOW AROUND WORK AREA.
- 5.) DE-WATER EFFLUENT FROM WORK SITE INTO SPECIAL STILLING BASIN.
- 6.) CONSTRUCT PROPOSED CATCH BASIN AND 48" RCP EXTENSION.

PHASE 2

- 7.) CONSTRUCT PROPOSED JUNCTION BOX AND REMAINDER OF PROPOSED 42" RCP.
- 8.) REMOVE TEMPORARY IMPERVIOUS DIKES AND TEMPORARY PUMP(S) TO ALLOW FLOW THROUGH NEWLY CONSTRUCTED CULVERT.
- 9.) UPON STABILIZATION OF ALL DISTURBED AREAS, REMOVE ALL TEMPORARY SEDIMENT CONTROL DEVICES.
- 10.) REMOVE ANY REMAINING SPECIAL STILLING BASIN(S) AND COMPLETE ROADWAY CONSTRUCTION.

REVISIONS



CLEARING AND GRUBBING EROSION CONTROL FOR CONSTRUCTION SHEET 4

NOTE: PLACE TEMPORARY ROCK SEDIMENT DAMS TYPE - B AND TEMPORARY ROCK SILT CHECKS TYPE - A AT DRAINAGE OUTLETS.

UTILIZE FABRIC INSERT INLET PROTECTION IN LIEU OF ROCK INLET SEDIMENT TRAPS, TYPE-C AS DIRECTED BY THE ENGINEER TO AVOID IMPOUNDMENT OF RUNOFF IN ROADWAY OPEN TO TRAFFIC

60 x 25 x 3
1.5 inch Skimmer
with 1.125 inch
Orifice Diameter
6 ft. weir
ID 6.1 C&G

96 x 30 x 3
1.5 inch Skimmer
with 1.500 inch
Orifice Diameter
12 ft. weir
ID 6.2 C&G

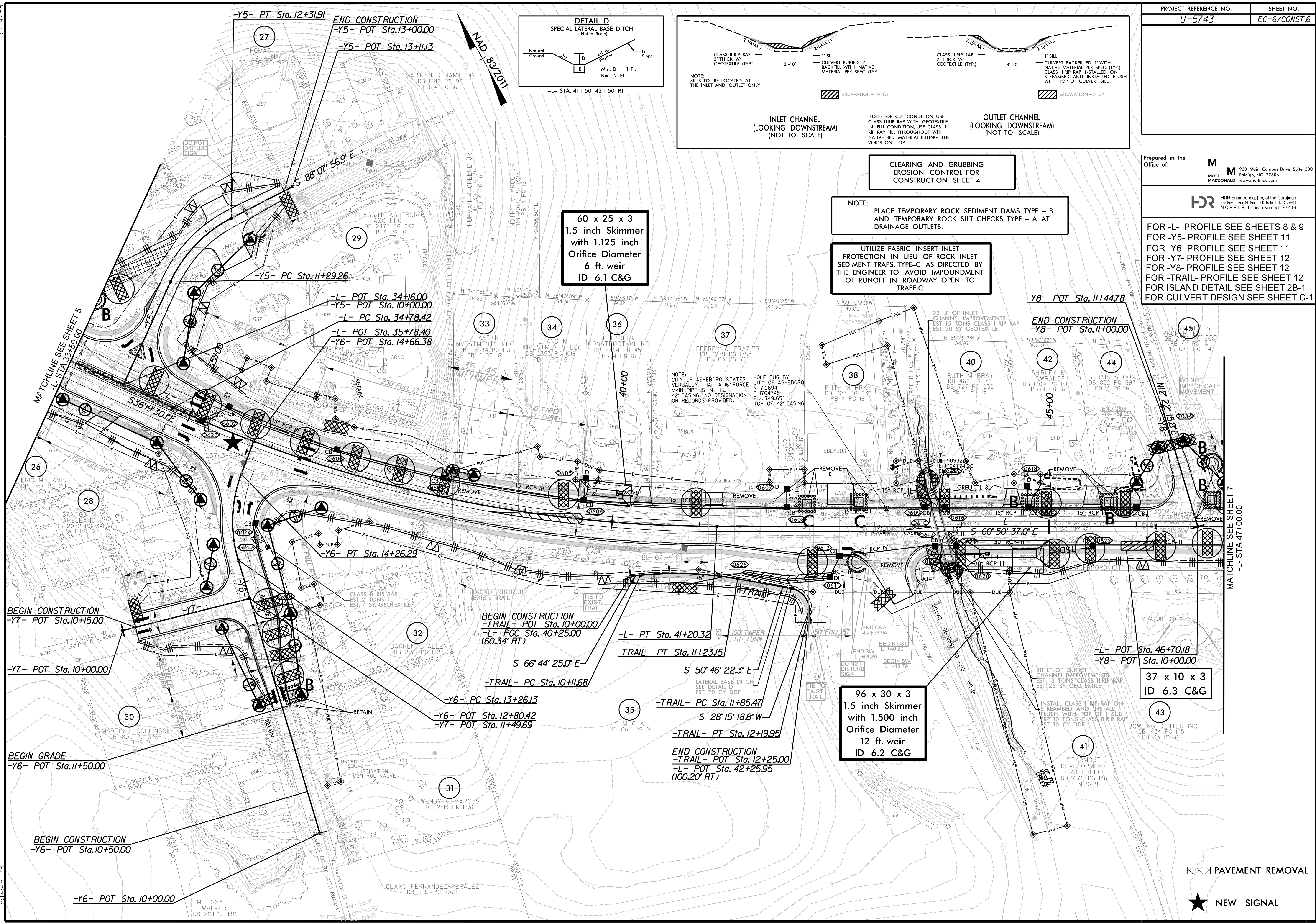
37 x 10 x 3
ID 6.3 C&G

FOR -L- PROFILE SEE SHEETS 8 & 9
FOR -Y5- PROFILE SEE SHEET 11
FOR -Y6- PROFILE SEE SHEET 11
FOR -Y7- PROFILE SEE SHEET 12
FOR -Y8- PROFILE SEE SHEET 12
FOR -TRAIL- PROFILE SEE SHEET 12
FOR ISLAND DETAIL SEE SHEET 2B-1
FOR CULVERT DESIGN SEE SHEET C-1

Prepared in the Office of: **M** MOTT MACDONALD
930 Main Campus Drive, Suite 200
Raleigh, NC 27606
www.mottmac.com

HR HDR Engineering, Inc. of the Carolinas
555 Fayetteville St., Suite 900, Raleigh, NC 27601
N.C.B.E.L.S. License Number: F-0116

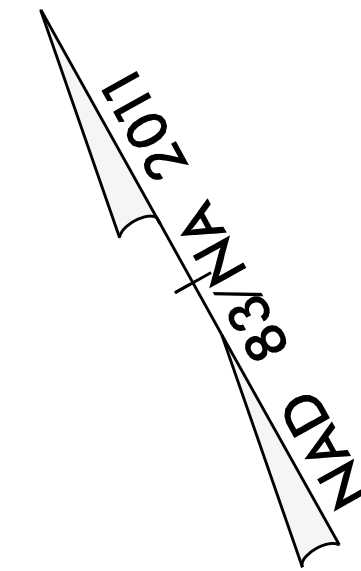
3/31/2026 10:41:41 U-5743_EC_PSH.dgn



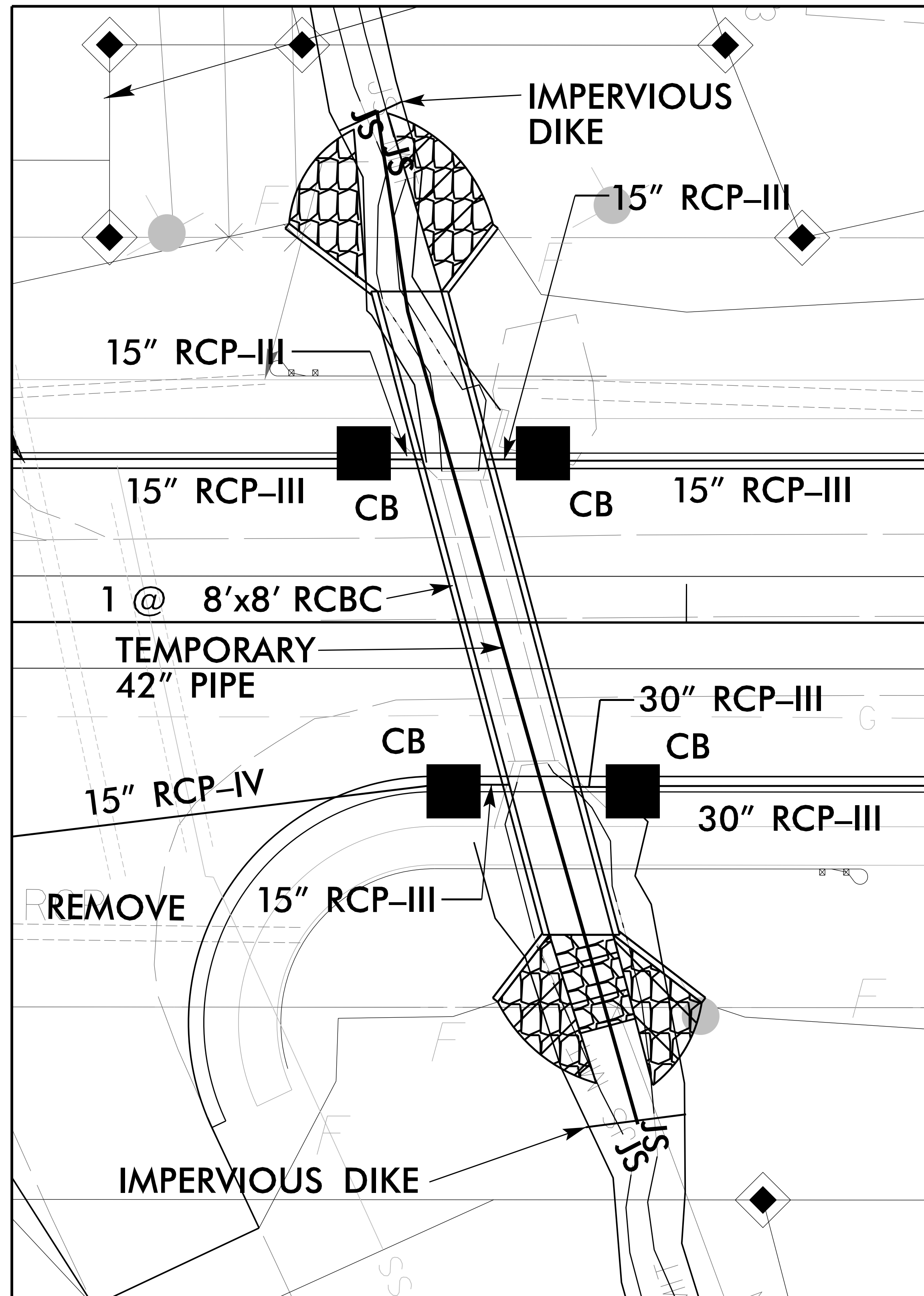
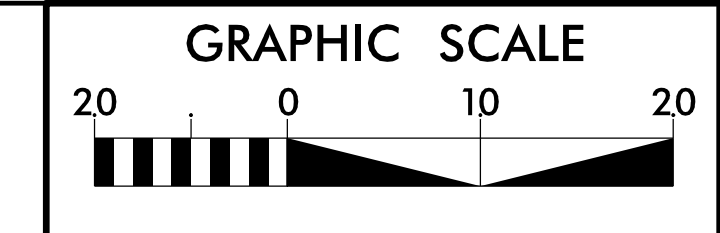
PAVEMENT REMOVAL

NEW SIGNAL

1 @ 8' x 8' RCBC CULVERT CONSTRUCTION SEQUENCE



HDR HDR Engineering, Inc. of the Carolinas
 555 Fayetteville St. Suite 900 Raleigh, N.C. 27601
 N.C.B.E.L.S. License Number: F-0116



CULVERT PHASING

PHASE 1

- 1.) INSTALL ALL TEMPORARY SEDIMENT CONTROL DEVICES NECESSARY FOR CULVERT CONSTRUCTION.
- 2.) INSTALL SPECIAL STILLING BASIN WITHIN PROJECT RIGHT-OF-WAY. PUMP ALL EFFLUENT INTO SPECIAL STILLING BASIN.
- 3.) INSTALL IMPERVIOUS DIKES AND INSTALL 42" TEMP. PIPE.
- 4.) DE-WATER EFFLUENT FROM WORK SITE INTO SPECIAL STILLING BASIN.
- 5.) CONSTRUCT PROPOSED 1 @ 8'x8' RCBC CHANNEL IMPROVEMENTS.

PHASE 2

- 6.) REMOVE TEMPORARY IMPERVIOUS DIKES AND TEMPORARY PIPE TO ALLOW FLOW THROUGH NEWLY CONSTRUCTED CULVERT.
- 7.) UPON STABILIZATION OF ALL DISTURBED AREAS, REMOVE ALL TEMPORARY SEDIMENT CONTROL DEVICES.
- 8.) REMOVE ANY REMAINING SPECIAL STILLING BASIN(S) AND COMPLETE ROADWAY CONSTRUCTION.

REVISIONS

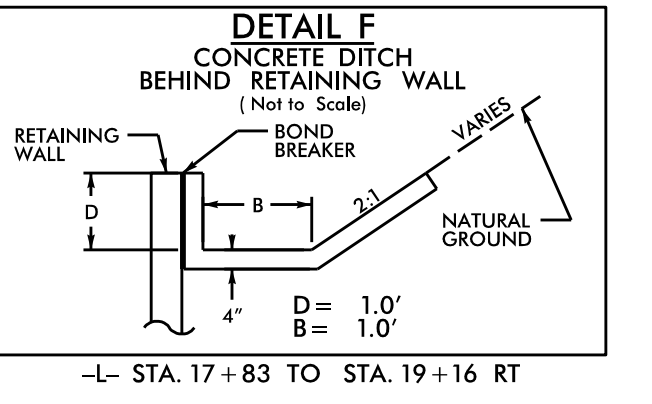
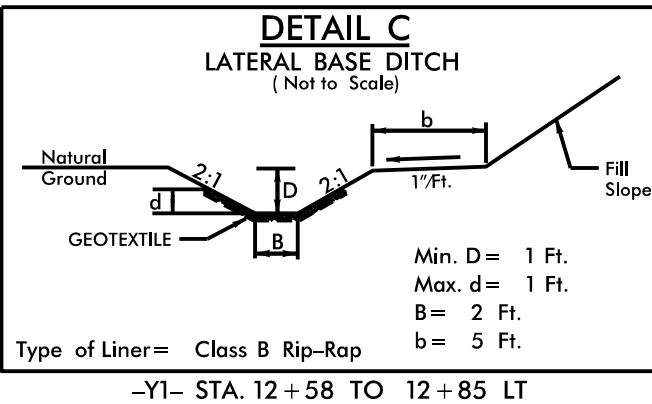
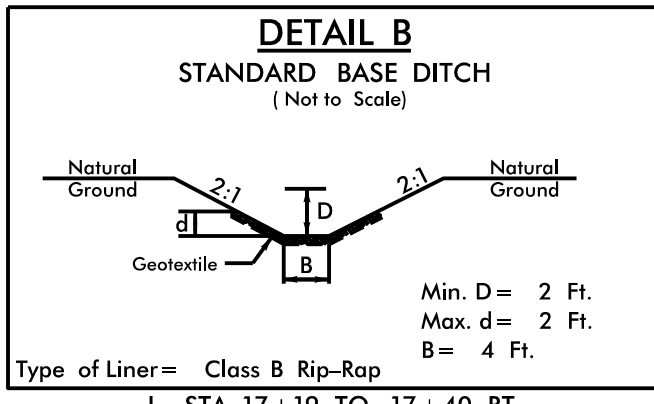
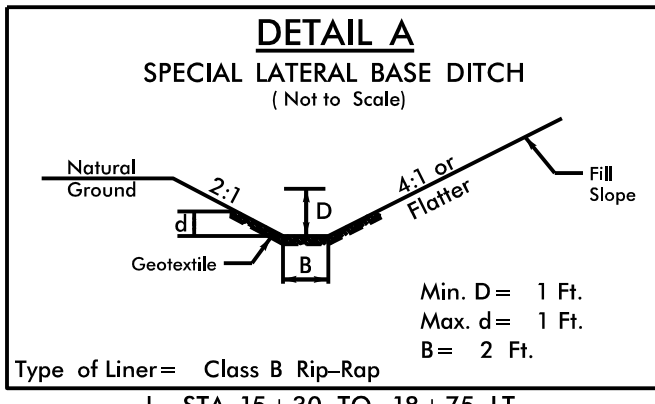
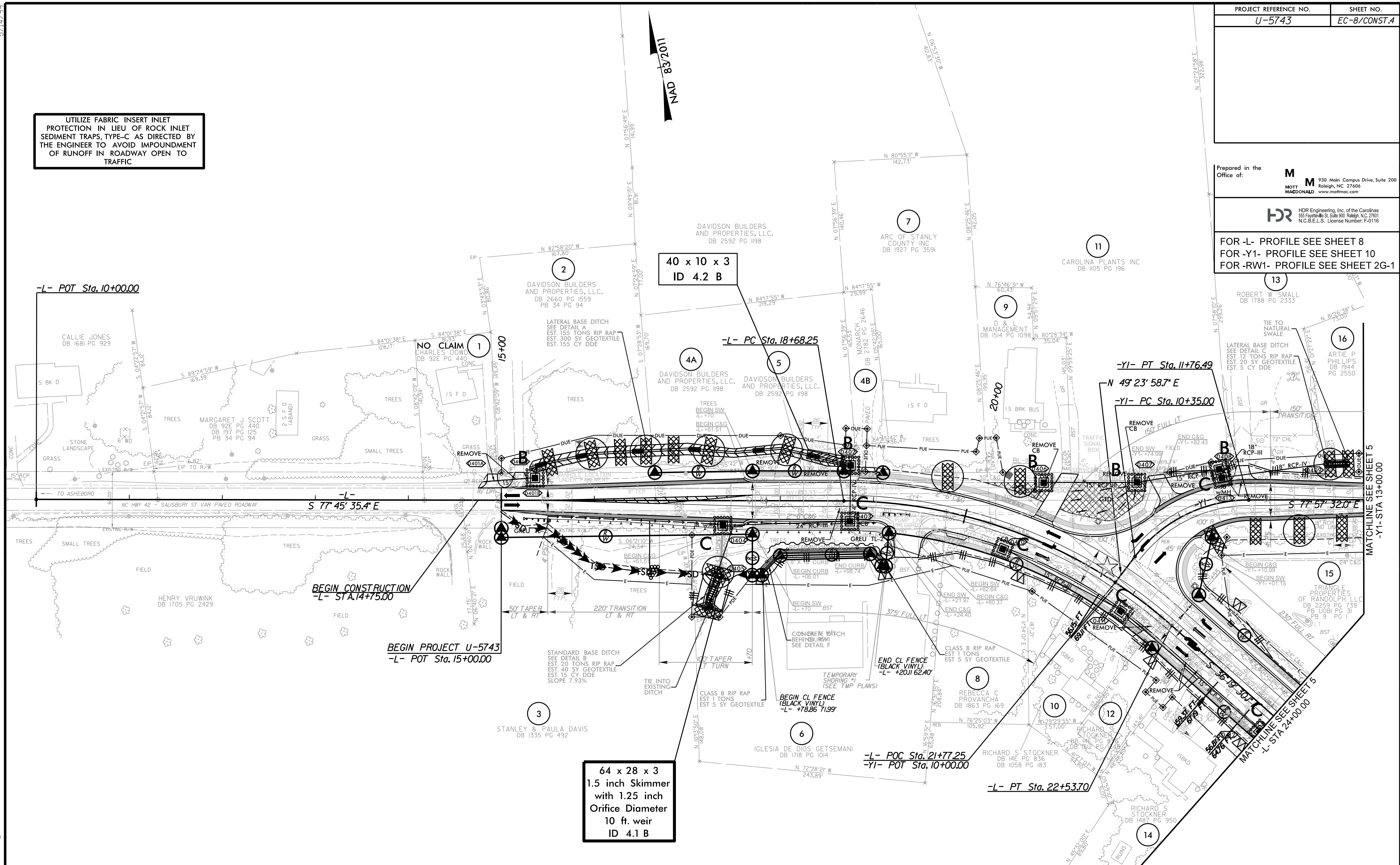
Prepared in the Office of:

M 930 Main Campus Drive, Suite 200
 Raleigh, NC 27606
 MOTT MACDONALD www.mottmac.com

HDR HDR Engineering, Inc. of the Carolinas
 55 Fayetteville St., Suite 900 Raleigh, NC 27601
 N.C.B.E.L.S. License Number: F-0116

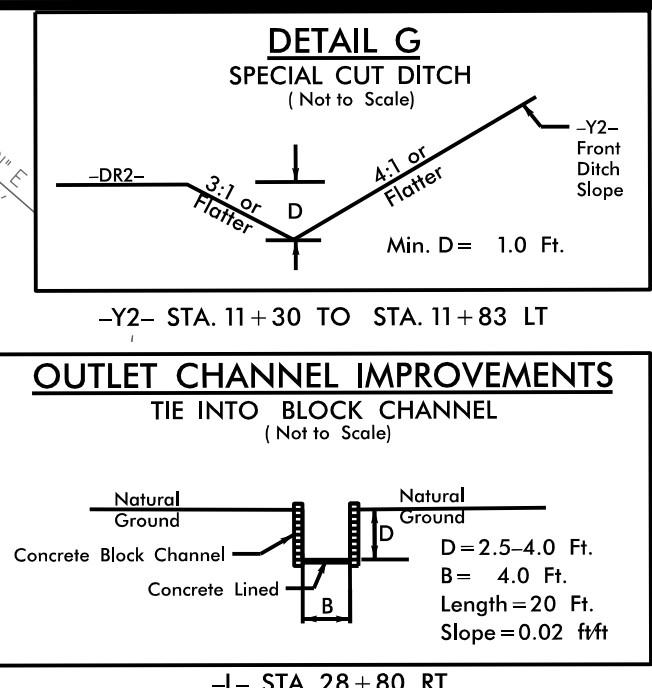
FOR -L- PROFILE SEE SHEET 8
 FOR -Y1- PROFILE SEE SHEET 10
 FOR -RW1- PROFILE SEE SHEET 2G-1

UTILIZE FABRIC INSERT INLET PROTECTION IN LIEU OF ROCK INLET SEDIMENT TRAPS, TYPE-C AS DIRECTED BY THE ENGINEER TO AVOID IMPOUNDMENT OF RUNOFF IN ROADWAY OPEN TO TRAFFIC



- SHORING
- PAVEMENT REMOVAL
- UPGRADED SIGNAL

3/31/2026 10:41:00 AM U-5743_EC_PSH.dgn
 5/14/99

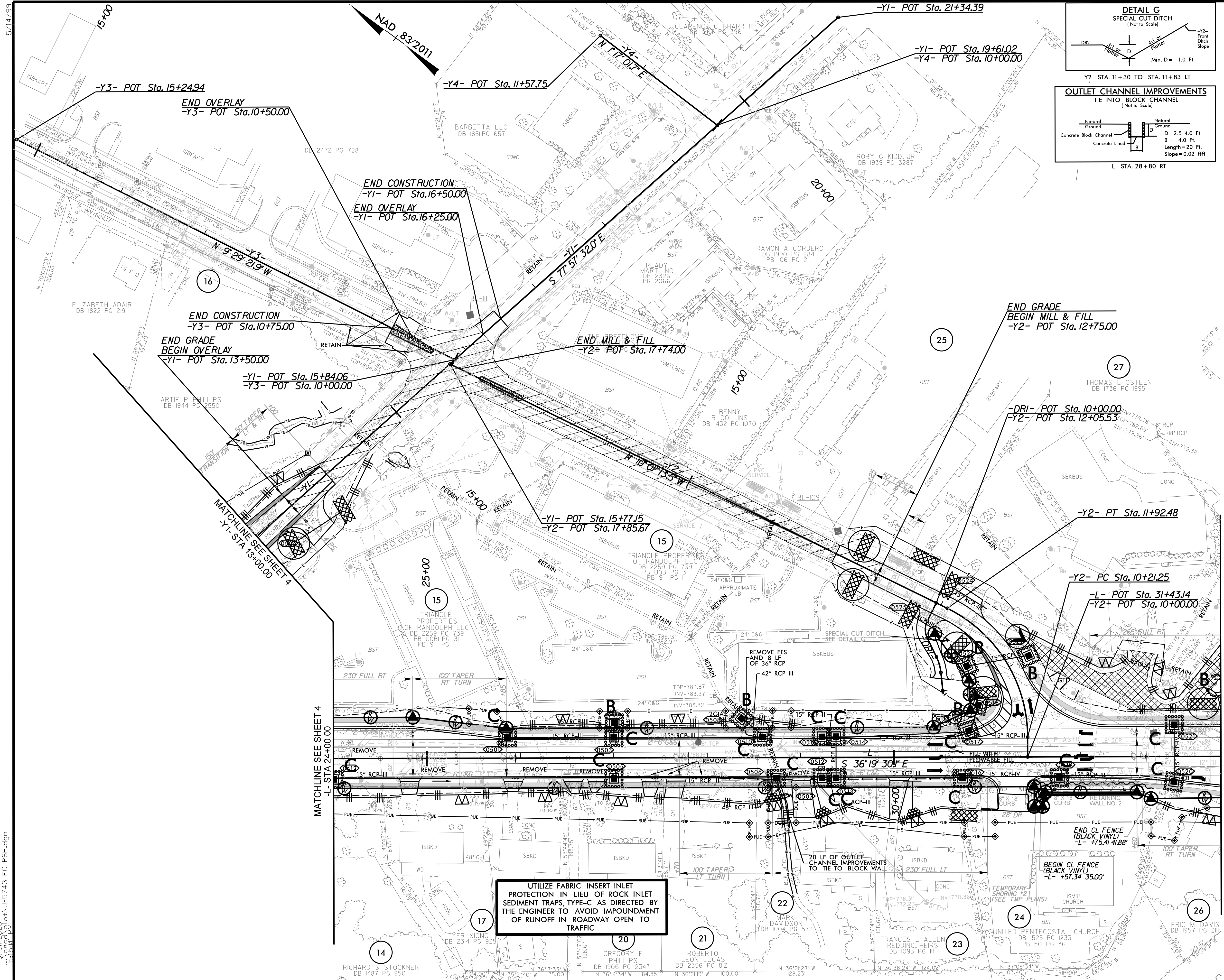


Prepared in the Office of:

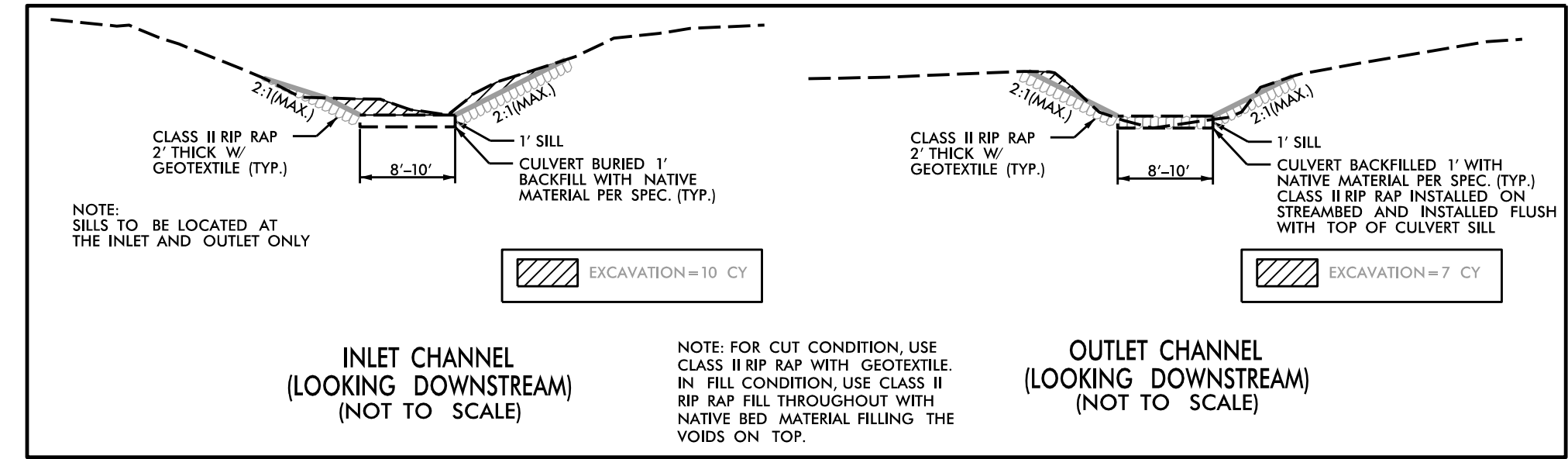
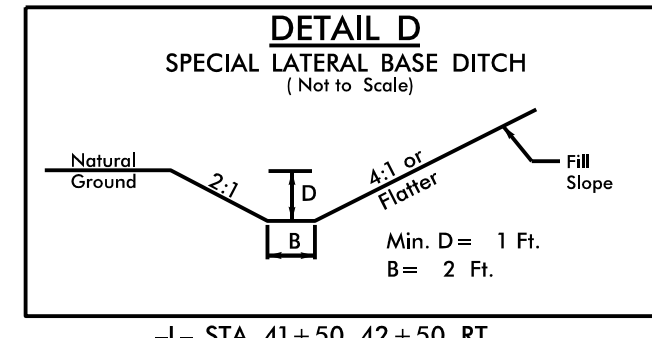
M MOTT MACDONALD
930 Main Campus Drive, Suite 200
Raleigh, NC 27606
www.mottmac.com

HDR HDR Engineering, Inc. of the Carolinas
555 Fayetteville St., Suite 900, Raleigh, NC 27601
N.C.B.E.L.S. License Number: F-0116

FOR -L- PROFILE SEE SHEETS 8
FOR -Y1- PROFILE SEE SHEET 10
FOR -Y2- PROFILE SEE SHEET 10
FOR -Y3- PROFILE SEE SHEET 11
FOR -DR1- PROFILE SEE SHEET 12
FOR ISLAND DETAIL SEE SHEET 2B-1
FOR -RW2- SEE SHEET 2G-2



3/31/2026
U-5743_EC-9_PSH.dgn

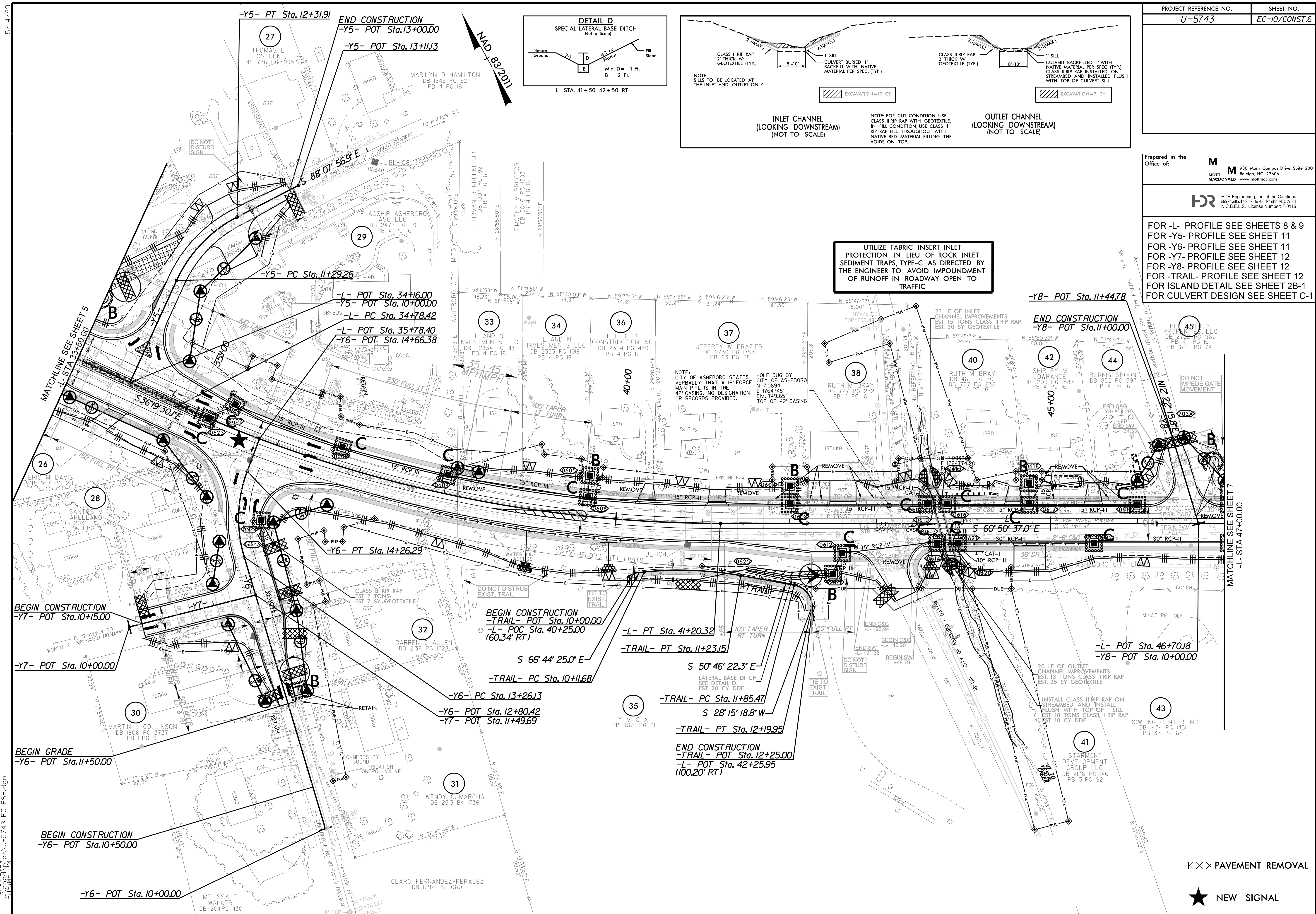


UTILIZE FABRIC INSERT INLET PROTECTION IN LIEU OF ROCK INLET SEDIMENT TRAPS, TYPE-C AS DIRECTED BY THE ENGINEER TO AVOID IMPEDIMENT OF RUNOFF IN ROADWAY OPEN TO TRAFFIC

FOR -L- PROFILE SEE SHEETS 8 & 9
 FOR -Y5- PROFILE SEE SHEET 11
 FOR -Y6- PROFILE SEE SHEET 11
 FOR -Y7- PROFILE SEE SHEET 12
 FOR -Y8- PROFILE SEE SHEET 12
 FOR -TRAIL- PROFILE SEE SHEET 12
 FOR ISLAND DETAIL SEE SHEET 2B-1
 FOR CULVERT DESIGN SEE SHEET C-1

Prepared in the Office of: **M** MOTT MACDONALD
 930 Main Campus Drive, Suite 200
 Raleigh, NC 27606
 www.mottmac.com

HR HDR Engineering, Inc. of the Carolinas
 555 Fayetteville St., Suite 900, Raleigh, NC 27601
 N.C.B.E.L.S. License Number: F-0116



PAVEMENT REMOVAL

★ NEW SIGNAL

3/31/2026 10:41:04 U-5743_EC_PSH.dgn
 5/14/99

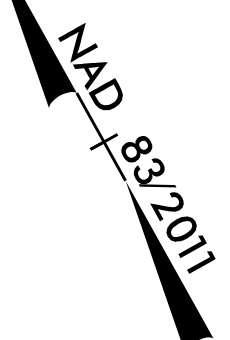
Prepared in the Office of:

M 930 Main Campus Drive, Suite 200
 MOTT MACDONALD Raleigh, NC 27606
 www.mottmac.com

HR HDR Engineering, Inc. of the Carolinas
 55 Fayetteville St., Suite 200 Raleigh, NC 27601
 N.C.B.E.L.S. License Number: F-0116

FOR -L- PROFILE SEE SHEET 9

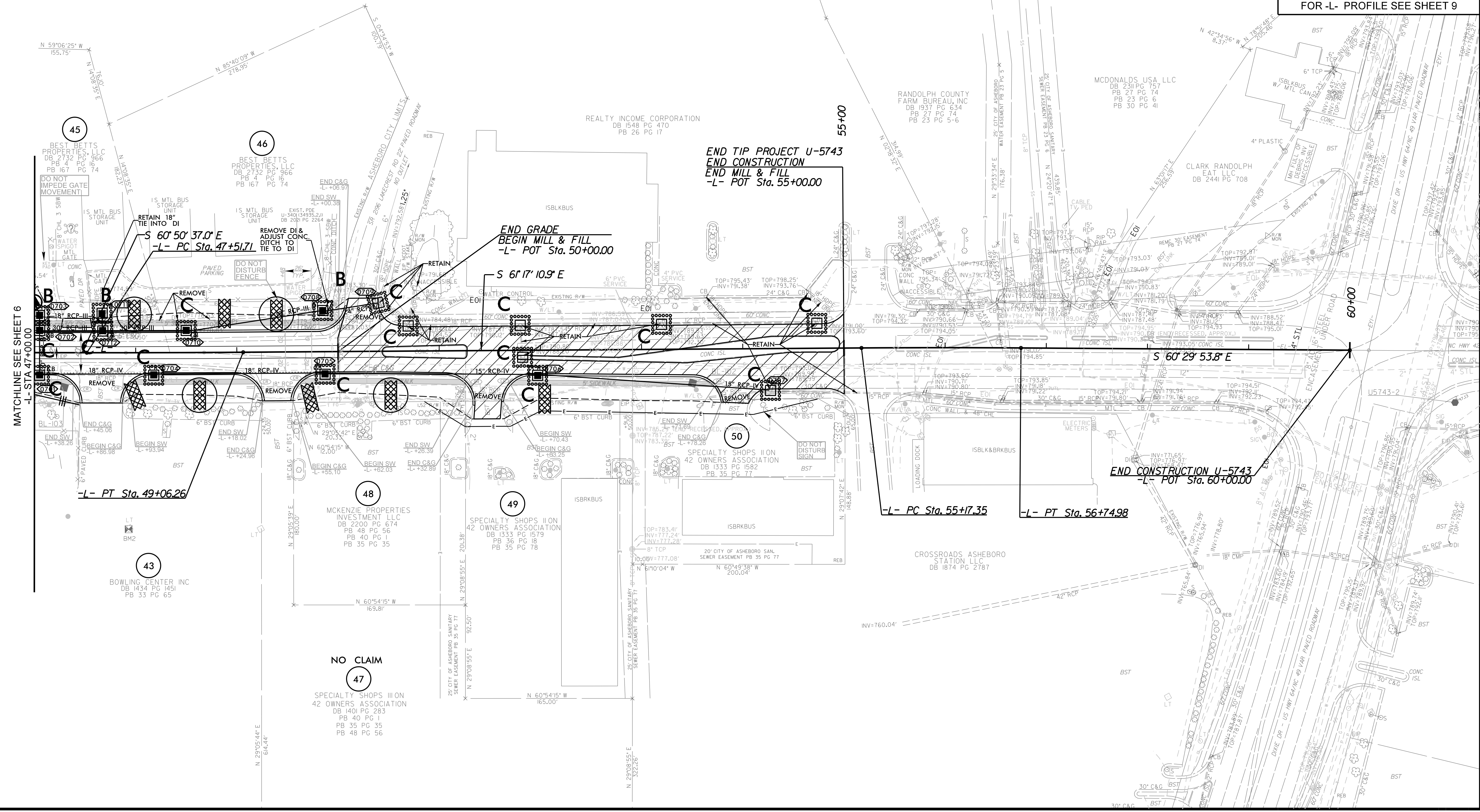
UTILIZE FABRIC INSERT INLET PROTECTION IN LIEU OF ROCK INLET SEDIMENT TRAPS, TYPE-C AS DIRECTED BY THE ENGINEER TO AVOID IMPOUNDMENT OF RUNOFF IN ROADWAY OPEN TO TRAFFIC



5/14/99

3/31/2026

U-5743-EC-II-CONST.7.dgn



MATCHLINE SEE SHEET 6
 -L- STA 47+00.00

END TIP PROJECT U-5743
 END CONSTRUCTION
 END MILL & FILL
 -L- POT Sta. 55+00.00

END CONSTRUCTION U-5743
 -L- POT Sta. 60+00.00

NO CLAIM
 47
 SPECIALTY SHOPS III ON
 42 OWNERS ASSOCIATION
 DB 1401 PG 283
 PB 35 PG 35
 PB 48 PG 56

43
 BOWLING CENTER INC
 DB 1434 PG 1451
 PB 33 PG 65

46
 BEST BETTS PROPERTIES, LLC
 DB 2732 PG 966
 PB 4 PG 74
 PB 167 PG 74

48
 MCKENZIE PROPERTIES INVESTMENT LLC
 DB 2200 PG 674
 PB 48 PG 56
 PB 40 PG 1
 PB 35 PG 35

49
 SPECIALTY SHOPS II ON 42 OWNERS ASSOCIATION
 DB 1333 PG 1579
 PB 36 PG 18
 PB 35 PG 78

50
 SPECIALTY SHOPS II ON 42 OWNERS ASSOCIATION
 DB 1333 PG 1582
 PB 35 PG 77

CROSSROADS ASHEBORO STATION LLC
 DB 1874 PG 2787

RANDOLPH COUNTY FARM BUREAU, INC
 DB 1937 PG 634
 PB 27 PG 74
 PB 23 PG 5-6

MCDONALDS USA LLC
 DB 2311 PG 757
 PB 27 PG 74
 PB 23 PG 6
 PB 30 PG 41

CLARK RANDOLPH EAT LLC
 DB 2441 PG 708

REALTY INCOME CORPORATION
 DB 1548 PG 470
 PB 26 PG 17

BELK OF ASHEBORO NC INC
 DB 1123 PG 272
 PB 27 PG 74
 PB 23 PG 5-6