

NEW AERIAL SPLICE ENCLOSURE
NC 42 @ SR 2197 (DUBLIN RD.)
SIG. INV. # 08-0661

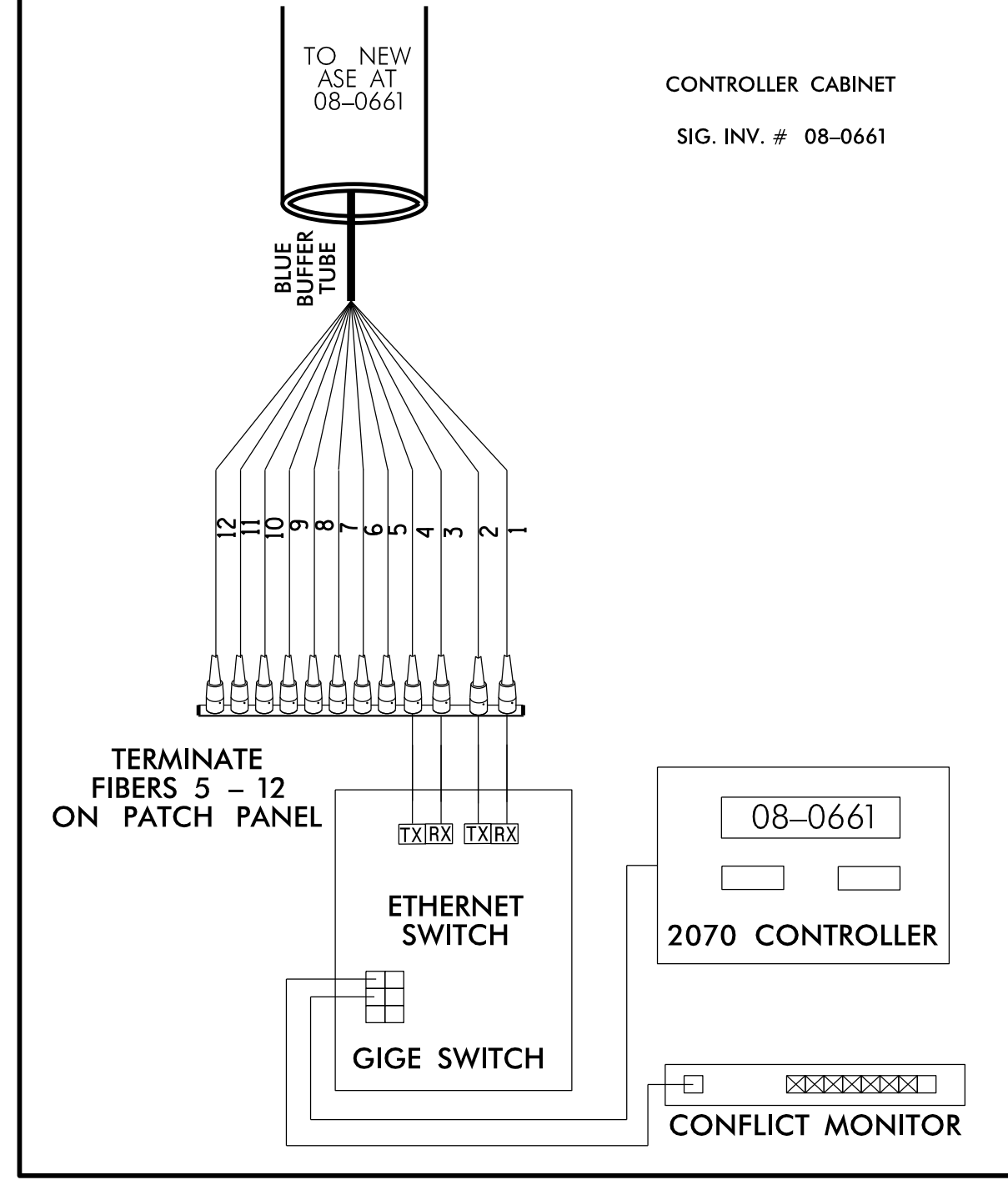
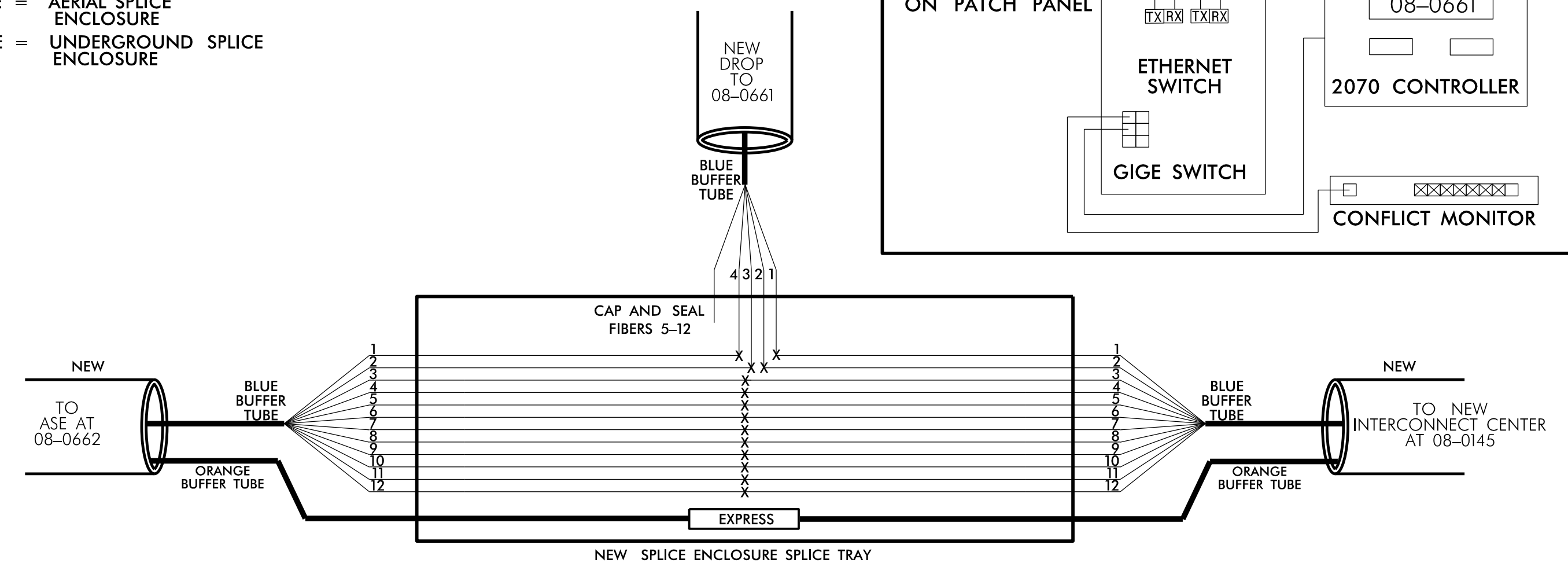
Notes:
Unused fibers left coiled and stored in splice tray.
Unused Buffer Tubes left coiled and stored in splice tray.

COLOR CODE
TIA/EIA 598-A

- (1) BLUE (7) RED
- (2) ORANGE (8) BLACK
- (3) GREEN (9) YELLOW
- (4) BROWN (10) VIOLET
- (5) SLATE (11) ROSE
- (6) WHITE (12) AQUA

LEGEND

- X = FUSION SPLICE
- C = CAP IN TRAY
- ASE = AERIAL SPLICE ENCLOSURE
- UGSE = UNDERGROUND SPLICE ENCLOSURE



INTERSECTION LOCATION
NC 42 @ US 64 (E. DIXIE DRIVE)
SIG. INV. # 08-0145

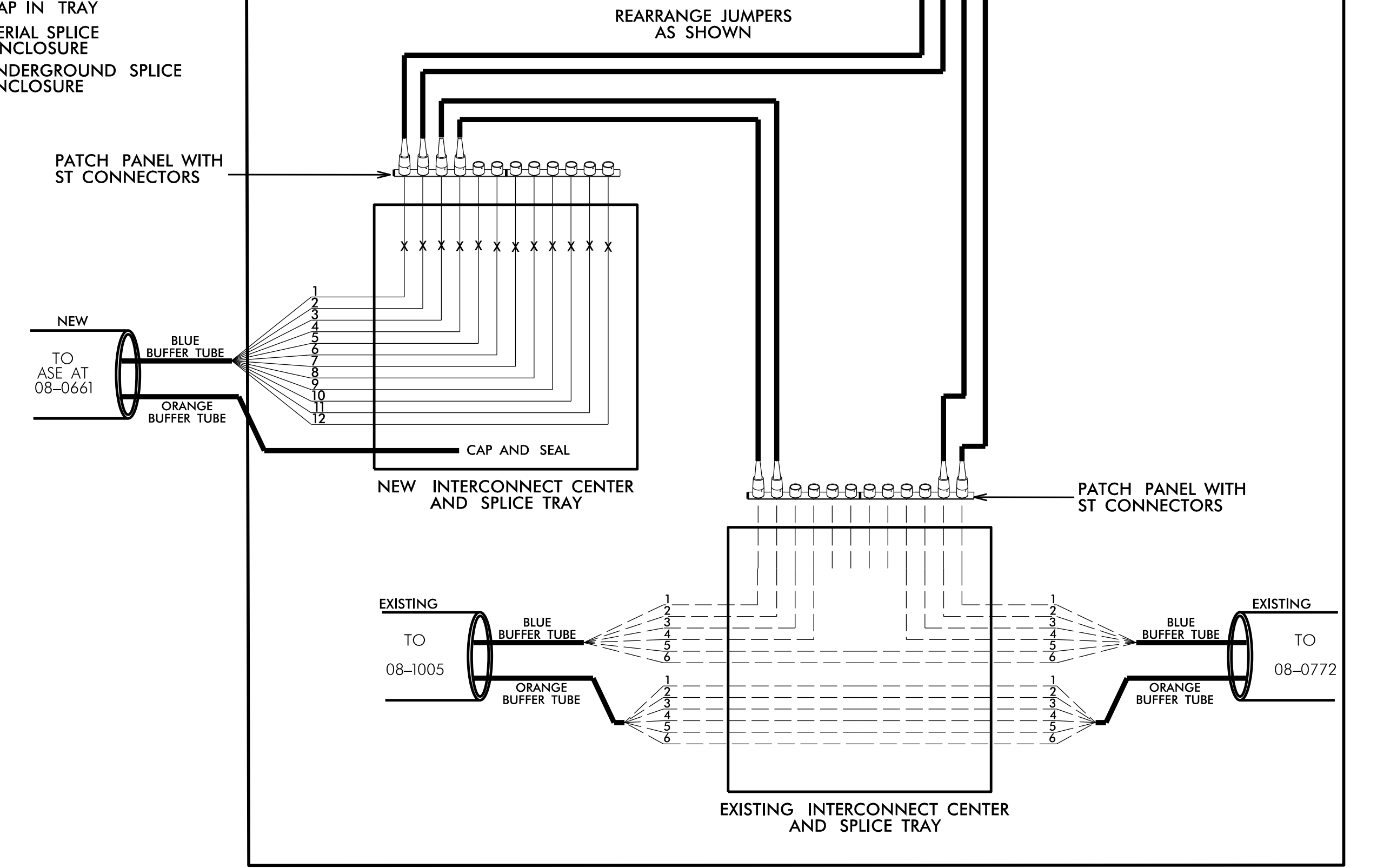
Notes:
Unused fibers left coiled and stored in splice tray.
Unused Buffer Tubes left coiled and stored in splice tray.

COLOR CODE
TIA/EIA 598-A

- (1) BLUE (7) RED
- (2) ORANGE (8) BLACK
- (3) GREEN (9) YELLOW
- (4) BROWN (10) VIOLET
- (5) SLATE (11) ROSE
- (6) WHITE (12) AQUA

LEGEND

- X = FUSION SPLICE
- C = CAP IN TRAY
- ASE = AERIAL SPLICE ENCLOSURE
- UGSE = UNDERGROUND SPLICE ENCLOSURE



- 1) NOTIFY THE DIVISION TRAFFIC ENGINEER, AT (910) 947-3930, FIVE (5) DAYS PRIOR TO BEGINNING WORK ON SIGNAL SYSTEM COMMUNICATIONS CABLE. NOTIFY THE DIVISION TRAFFIC ENGINEER AFTER ALL WORK IS PERFORMED TO ENSURE THAT ALL FIBER CIRCUITS ARE FUNCTIONING PROPERLY. ALL WORK IS NOT COMPLETE UNTIL THE SIGNAL SYSTEM IS BACK UP AND OPERATIONAL.
- 2) CONTRACTOR TO RECORD EXISTING SPLICE ARRANGEMENT FOR COMPARISON TO THE SUPPLIED SPLICE DETAILS. IF DISCREPANCIES EXIST, CONTACT THE ENGINEER TO DETERMINE HOW TO PROCEED WITH RESPLICING. PROVIDE AS-BUILT PLANS TO THE ENGINEER IF FINAL SPLICE ARRANGEMENT DIFFERS FROM THE SUPPLIED SPLICE DETAILS.
- 3) ETHERNET TERMINATION CONFIGURATIONS ARE GENERIC. CONTRACTOR IS RESPONSIBLE FOR DETERMINING \ ENSURING PROPER TERMINATIONS.
- 4) INCLUDE ON THE COVER OF EACH SPLICE TRAY THE FOLLOWING:
REFERENCE SECTION 1731 "FIBER OPTIC SPLICE ENCLOSURE"
 - 1) SPLICE LOCATION
 - 2) DATE
 - 3) COMPANY NAME
 - 4) NAME OF INDIVIDUAL PERFORMING THE SPLICING

PRIOR TO INSTALLING THE COVER ON THE SPLICE TRAY TAKE A DIGITAL PHOTOGRAPH SHOWING THE SPLICE TRAY AND INFORMATION SHOWN ABOVE (1-4) AND SUBMIT PHOTOGRAPH ALONG WITH OTDR TEST RESULTS.

SEE "NOTE #2".

TYING INTO 08-0145 WITH SYSTEM DESIGNATION: D08-12_ASHEBORO

DOCUMENT NOT CONSIDERED FINAL
UNLESS ALL SIGNATURES COMPLETED

<p>MOTT MACDONALD 330 Main Campus Drive Suite 200 Raleigh, NC 27606 Ph: (919) 552-2253 www.mottmac.com License No. F-0669</p>		<p>SPLICE PLANS</p>					
		<p>Division 08 Randolph Co. Asheboro</p> <p>PLAN DATE: March 2026 REVIEWED BY: S. O'Farrell</p> <p>PREPARED BY: IN Avery REVIEWED BY: L. D. Stouchko</p>	<p>REVISIONS</p> <table border="1"> <thead> <tr> <th>NO.</th> <th>DATE</th> <th>DESCRIPTION</th> </tr> </thead> <tbody> <tr> <td> </td> <td> </td> <td> </td> </tr> </tbody> </table>	NO.	DATE	DESCRIPTION	
NO.	DATE	DESCRIPTION					