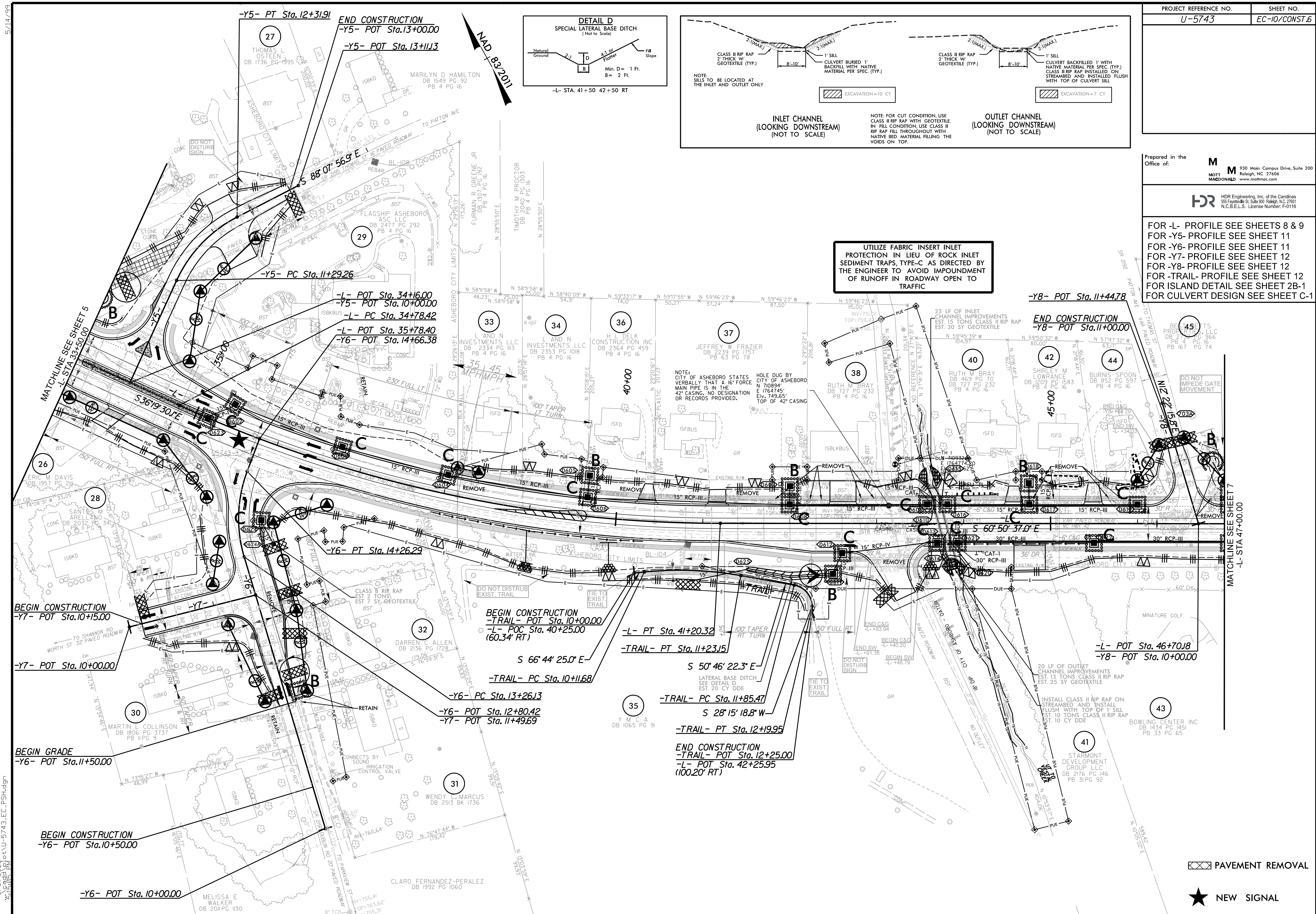


UTILIZE FABRIC INSERT INLET PROTECTION IN LIEU OF ROCK INLET SEDIMENT TRAPS, TYPE-C AS DIRECTED BY THE ENGINEER TO AVOID IMPEDIMENT OF RUNOFF IN ROADWAY OPEN TO TRAFFIC

FOR -L- PROFILE SEE SHEETS 8 & 9
 FOR -Y5- PROFILE SEE SHEET 11
 FOR -Y6- PROFILE SEE SHEET 11
 FOR -Y7- PROFILE SEE SHEET 12
 FOR -Y8- PROFILE SEE SHEET 12
 FOR -TRAIL- PROFILE SEE SHEET 12
 FOR ISLAND DETAIL SEE SHEET 2B-1
 FOR CULVERT DESIGN SEE SHEET C-1

Prepared in the Office of: **M** MOTT MACDONALD
 930 Main Campus Drive, Suite 200
 Raleigh, NC 27606
 www.mottmac.com

HR HDR Engineering, Inc. of the Carolinas
 555 Fayetteville St., Suite 950, Raleigh, NC 27601
 N.C.B.E.L.S. License Number: F-0116



PAVEMENT REMOVAL

★ NEW SIGNAL