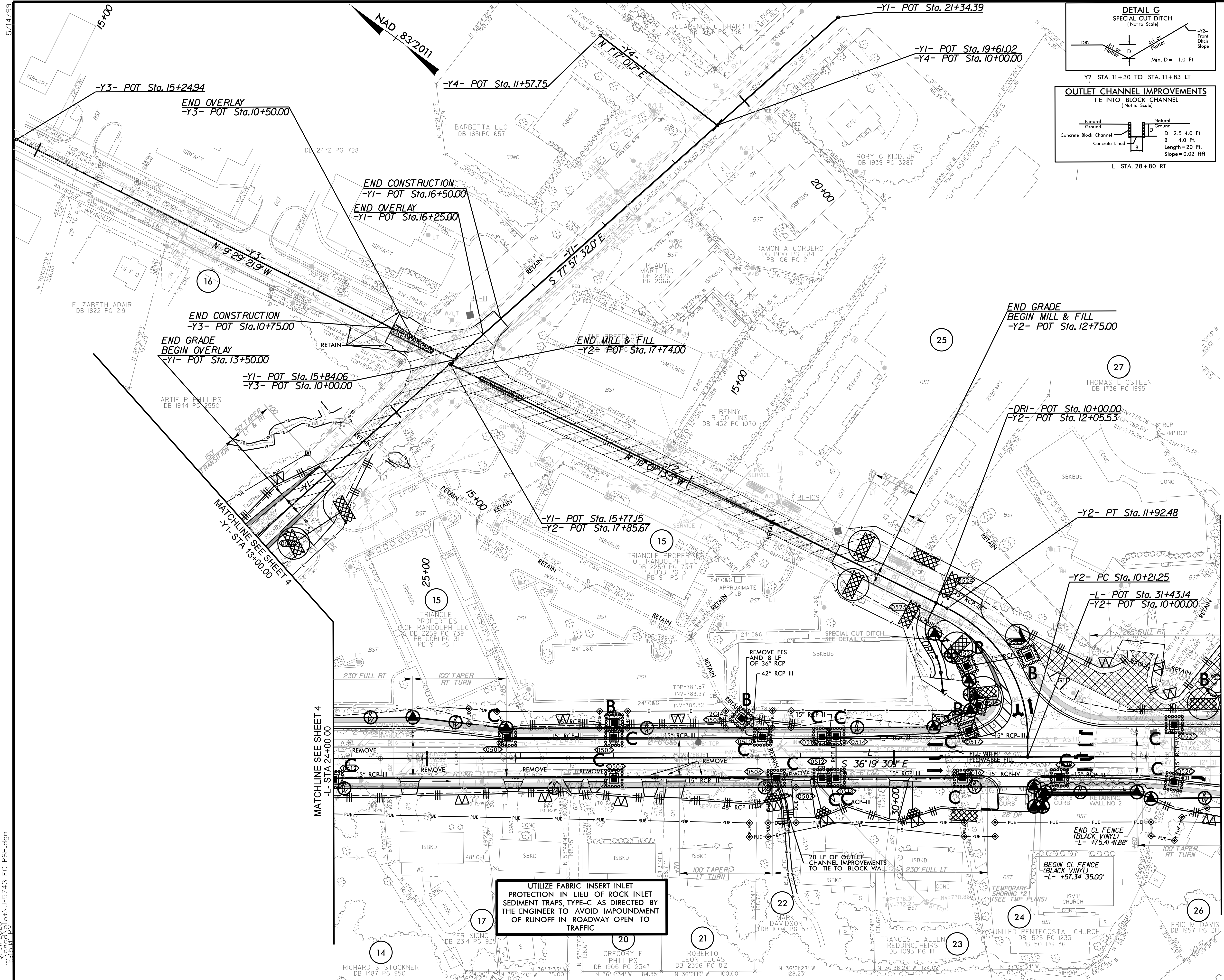


Prepared in the Office of:

**M** MOTT MACDONALD  
930 Main Campus Drive, Suite 200  
Raleigh, NC 27606  
www.mottmac.com

**HDR** HDR Engineering, Inc. of the Carolinas  
555 Fayetteville St., Suite 900, Raleigh, NC 27601  
N.C.B.E.L.S. License Number: F-0116

FOR -L- PROFILE SEE SHEETS 8  
FOR -Y1- PROFILE SEE SHEET 10  
FOR -Y2- PROFILE SEE SHEET 10  
FOR -Y3- PROFILE SEE SHEET 11  
FOR -DR1- PROFILE SEE SHEET 12  
FOR ISLAND DETAIL SEE SHEET 2B-1  
FOR -RW2- SEE SHEET 2G-2



UTILIZE FABRIC INSERT INLET PROTECTION IN LIEU OF ROCK INLET SEDIMENT TRAPS, TYPE-C AS DIRECTED BY THE ENGINEER TO AVOID IMPOUNDMENT OF RUNOFF IN ROADWAY OPEN TO TRAFFIC

3/31/2026  
U-5743\_EC-9\_PSH.dgn