

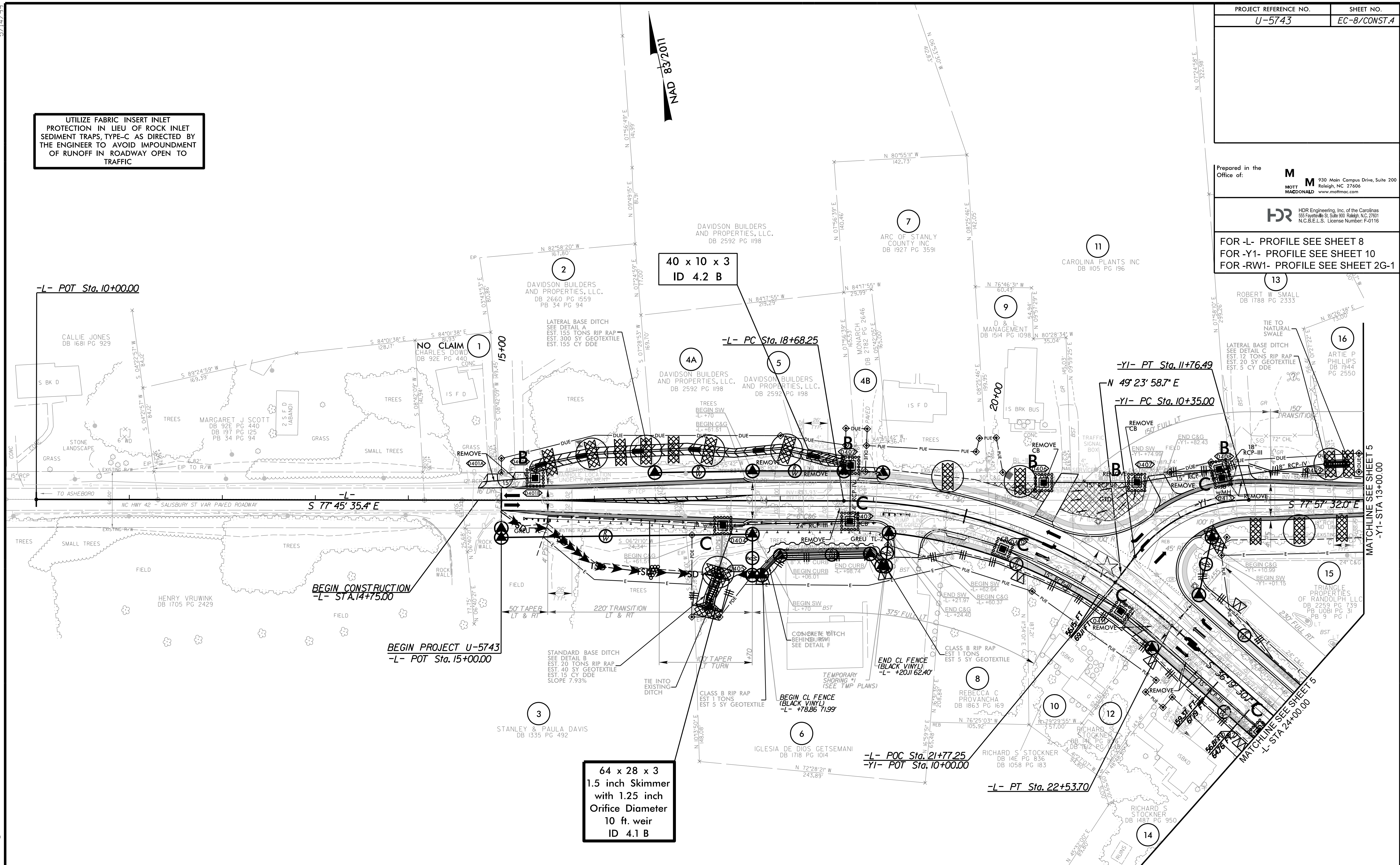
Prepared in the Office of:

M 930 Main Campus Drive, Suite 200
 Raleigh, NC 27606
 MOTT MACDONALD www.mottmac.com

HDR HDR Engineering, Inc. of the Carolinas
 55 Fayetteville S. Suite 900 Raleigh, NC 27601
 N.C.B.E.L.S. License Number: F-0116

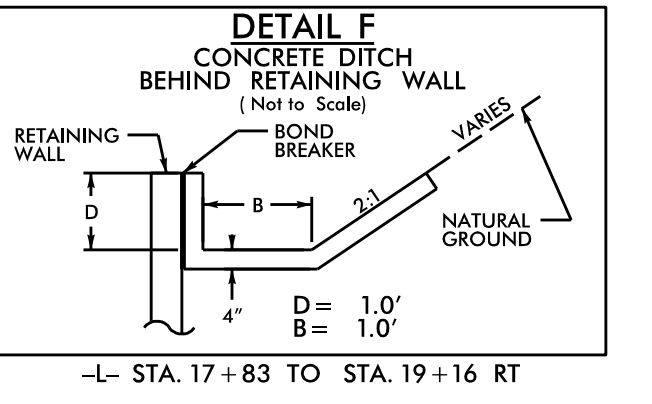
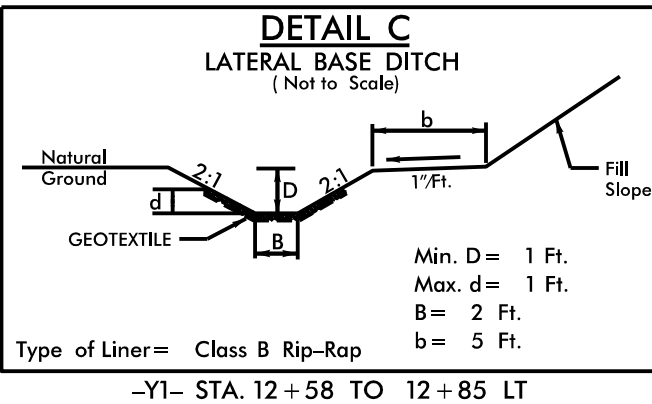
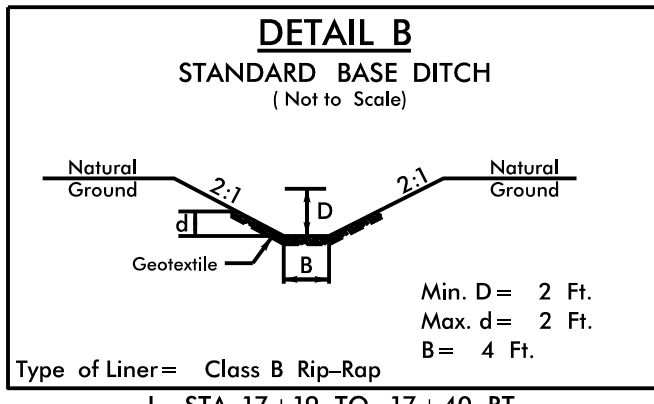
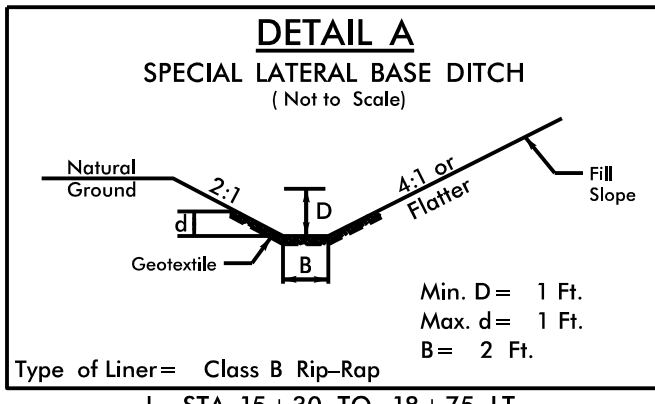
FOR -L- PROFILE SEE SHEET 8
 FOR -Y1- PROFILE SEE SHEET 10
 FOR -RW1- PROFILE SEE SHEET 2G-1

UTILIZE FABRIC INSERT INLET PROTECTION IN LIEU OF ROCK INLET SEDIMENT TRAPS, TYPE-C AS DIRECTED BY THE ENGINEER TO AVOID IMPOUNDMENT OF RUNOFF IN ROADWAY OPEN TO TRAFFIC



40 x 10 x 3
ID 4.2 B

64 x 28 x 3
1.5 inch Skimmer
with 1.25 inch
Orifice Diameter
10 ft. weir
ID 4.1 B



- SHORING
- PAVEMENT REMOVAL
- UPGRADED SIGNAL

3/31/2026 10:46:59 AM U:\5743_EC_PSH.dgn