

Prepared in the Office of:

**M** 930 Main Campus Drive, Suite 200  
 MOTT MACDONALD Raleigh, NC 27606  
 www.mottmac.com

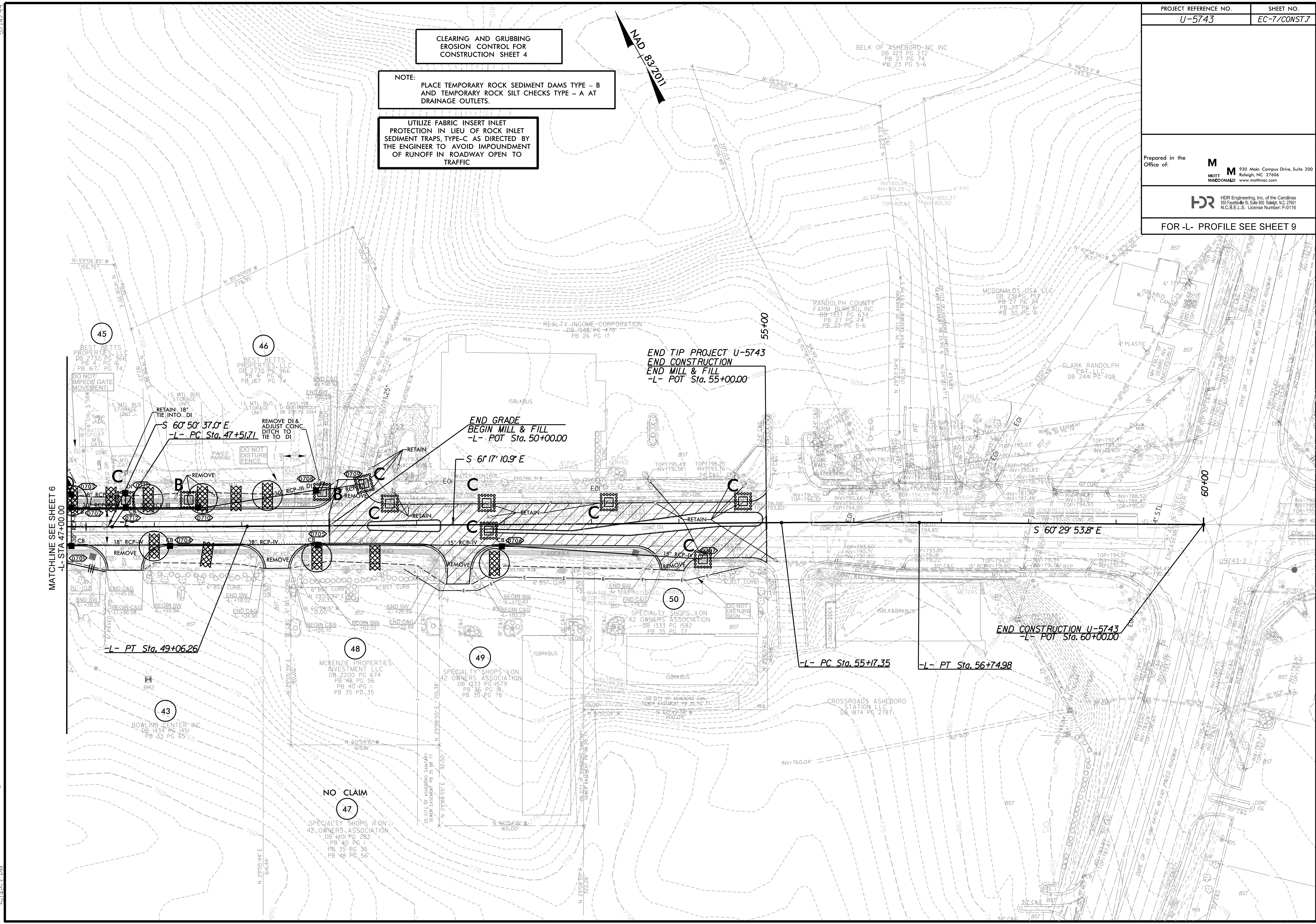
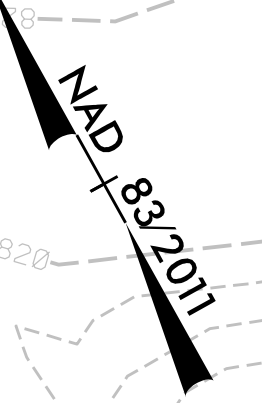
**HR** HDR Engineering, Inc. of the Carolinas  
 55 Fayetteville S. Suite 200 Raleigh, NC 27601  
 N.C.B.E.L.S. License Number: F-0116

FOR -L- PROFILE SEE SHEET 9

CLEARING AND GRUBBING  
 EROSION CONTROL FOR  
 CONSTRUCTION SHEET 4

NOTE:  
 PLACE TEMPORARY ROCK SEDIMENT DAMS TYPE - B  
 AND TEMPORARY ROCK SILT CHECKS TYPE - A AT  
 DRAINAGE OUTLETS.

UTILIZE FABRIC INSERT INLET  
 PROTECTION IN LIEU OF ROCK INLET  
 SEDIMENT TRAPS, TYPE-C AS DIRECTED BY  
 THE ENGINEER TO AVOID IMPOUNDMENT  
 OF RUNOFF IN ROADWAY OPEN TO  
 TRAFFIC



MATCHLINE SEE SHEET 6  
 -L- STA 47+00.00

3/31/2026  
 5:14:59 PM  
 U-5743\_EC\_PSH.dgn

5/14/2026