

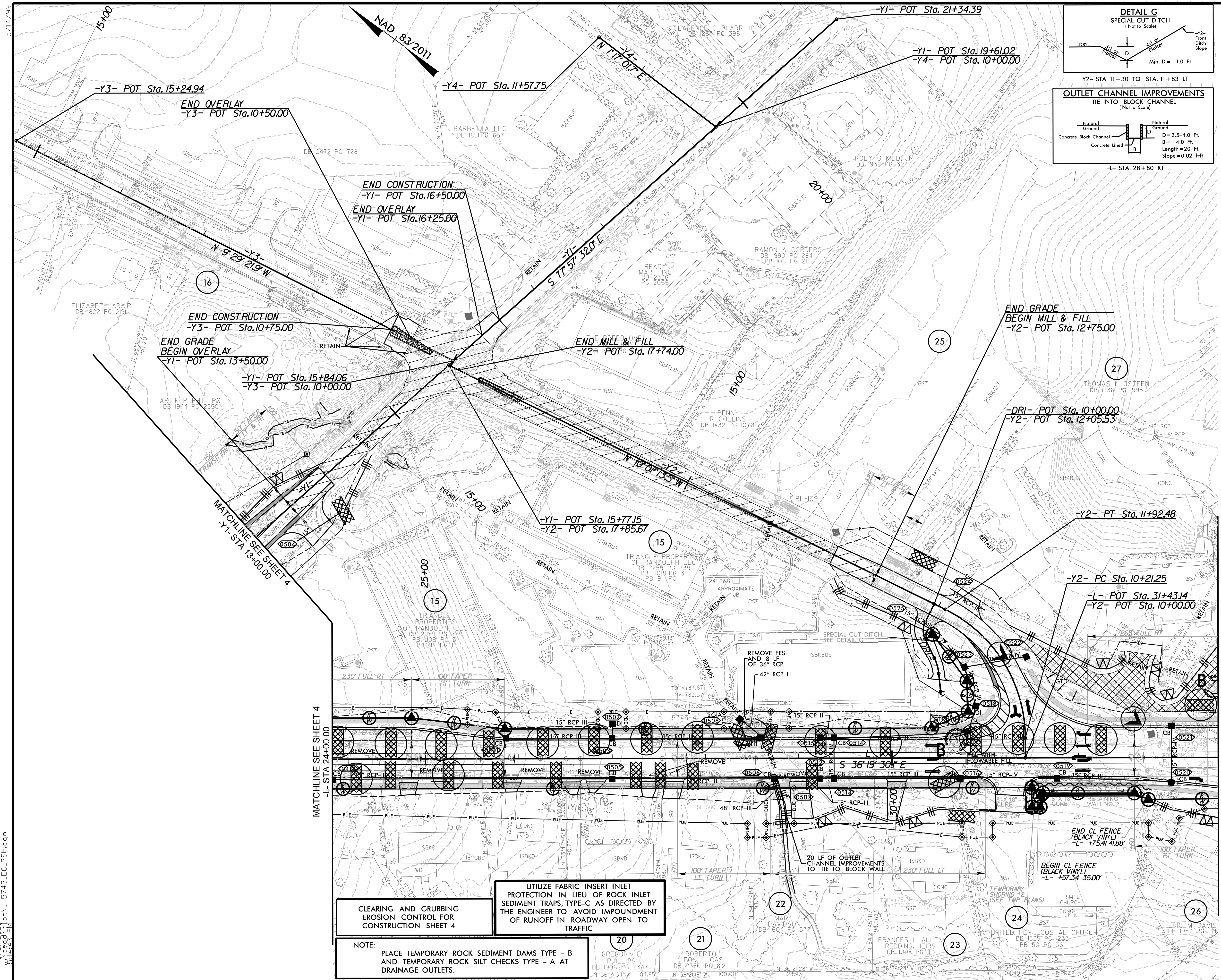
Prepared in the Office of:

M
MOTT
MACDONALD

930 Main Campus Drive, Suite 200
Raleigh, NC 27606
www.mottmac.com

HDR HDR Engineering, Inc. of the Carolinas
555 Fayetteville St., Suite 900 Raleigh, NC 27601
N.C.B.E.L.S. License Number: F-0116

FOR -L- PROFILE SEE SHEETS 8
FOR -Y1- PROFILE SEE SHEET 10
FOR -Y2- PROFILE SEE SHEET 11
FOR -Y3- PROFILE SEE SHEET 11
FOR -DR1- PROFILE SEE SHEET 12
FOR ISLAND DETAIL SEE SHEET 2B-1
FOR -RW2- SEE SHEET 2G-2



UTILIZE FABRIC INSERT INLET PROTECTION IN LIEU OF ROCK INLET SEDIMENT TRAPS, TYPE-C AS DIRECTED BY THE ENGINEER TO AVOID IMPOUNDMENT OF RUNOFF IN ROADWAY OPEN TO TRAFFIC

NOTE: PLACE TEMPORARY ROCK SEDIMENT DAMS TYPE - B AND TEMPORARY ROCK SILT CHECKS TYPE - A AT DRAINAGE OUTLETS.

SHORING

PAVEMENT REMOVAL

3/31/2026
5:42:23 PM
U-5743_EC_PSH.dgn