

NOTES:

1. IF FURTHER INFORMATION REGARDING PROJECT CONTROL IS NEEDED PLEASE CONTACT THE LOCATION AND SURVEYS UNIT.
2. PROJECT CONTROL WAS ESTABLISHED USING GNSS, THE GLOBAL NAVIGATION SATELLITE SYSTEM.
3. RIGHT OF WAY MONUMENTATION ESTABLISHED L-47+00 TO L-60+18.75.

PROJECT REFERENCE NO.	SHEET NO.
U-5743	RW07

Location and Surveys



GEOSPHERE LAND SURVEYING OF NC
128 TALBERT ROAD
MOORESVILLE NC 28117
FRM C-5241

PROJECT SURVEYOR

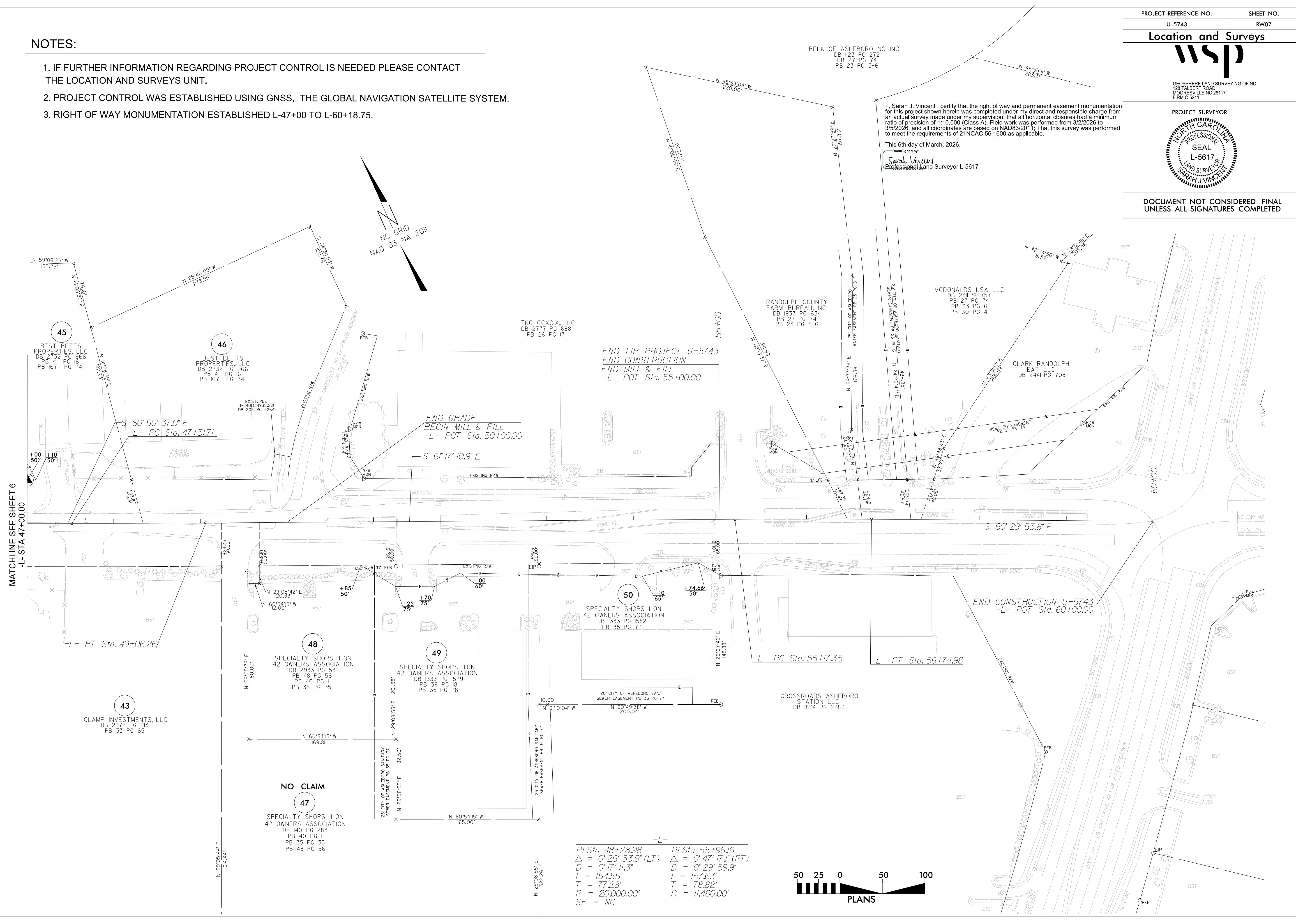


DOCUMENT NOT CONSIDERED FINAL
UNLESS ALL SIGNATURES COMPLETED

I, Sarah J. Vincent, certify that the right of way and permanent easement monumentation for this project shown herein was completed under my direct and responsible charge from an actual survey made under my supervision; that all horizontal closures had a minimum ratio of precision of 1:10,000 (Class A). Field work was performed from 3/2/2026 to 3/5/2026, and all coordinates are based on NAD83/2011. That this survey was performed to meet the requirements of 21NCAC 56.1600 as applicable.

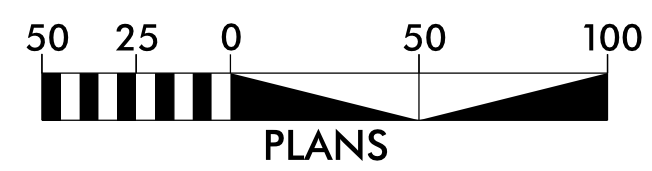
This 6th day of March, 2026.
 Designed by:
 Sarah Vincent
 Professional Land Surveyor L-5617

REVISIONS
 QC - MAR 2026 09:00
 USL 0725784
 CentralData\USRA0300\Projects\Raleigh Office Projects\Survey\NCD001\U-5743\Drawings\U-5743.LS.RW07_WSP-1.dgn
 42HYHW3



-L-

PI Sta 48+28.98	PI Sta 55+96.16
$\Delta = 0' 26' 33.9''$ (LT)	$\Delta = 0' 47' 17.1''$ (RT)
$D = 0' 17' 11.3''$	$D = 0' 29' 59.9''$
$L = 154.55'$	$L = 157.63'$
$T = 77.28'$	$T = 78.82'$
$R = 20,000.00'$	$R = 11,460.00'$
$SE = NC$	



MATCHLINE SEE SHEET 6
-L- STA 47+00.00

45
BEST BETTS PROPERTIES, LLC
DB 2732 PG 966
PB 4 PG 16
PB 167 PG 74

46
BEST BETTS PROPERTIES, LLC
DB 2732 PG 966
PB 4 PG 16
PB 167 PG 74

43
CLAMP INVESTMENTS, LLC
DB 2977 PG 913
PB 33 PG 65

48
SPECIALTY SHOPS II ON
42 OWNERS ASSOCIATION
DB 2933 PG 53
PB 48 PG 56
PB 40 PG 1
PB 35 PG 35

49
SPECIALTY SHOPS II ON
42 OWNERS ASSOCIATION
DB 1333 PG 1579
PB 36 PG 18
PB 35 PG 78

47
SPECIALTY SHOPS II ON
42 OWNERS ASSOCIATION
DB 1401 PG 283
PB 40 PG 1
PB 35 PG 35
PB 48 PG 56

TKC CCXCIX, LLC
DB 2777 PG 688
PB 26 PG 17

RANDOLPH COUNTY FARM BUREAU, INC
DB 1937 PG 634
PB 27 PG 74
PB 23 PG 5-6

MCDONALDS USA LLC
DB 2311 PG 757
PB 27 PG 74
PB 23 PG 6
PB 30 PG 41

CLARK RANDOLPH EAT LLC
DB 2441 PG 708

END TIP PROJECT U-5743
END CONSTRUCTION
END MILL & FILL
-L- POT Sta. 55+00.00

END GRADE
BEGIN MILL & FILL
-L- POT Sta. 50+00.00

END CONSTRUCTION U-5743
-L- POT Sta. 60+00.00

-L- PC Sta. 55+17.35
-L- PT Sta. 56+74.98

20' CITY OF ASHEBORO SAN. SEWER EASEMENT PB 35 PG 77

CROSSROADS ASHEBORO STATION LLC
DB 1874 PG 2787

N 29°05'44"E
614.44'

N 29°08'55"E
3222.26'

N 59°06'25"W
155.75'

N 85°40'09"W
278.95'

N 48°53'04"W
220.00'

N 46°55'11"W
283.37'

BELK OF ASHEBORO NC INC
DB 1123 PG 272
PB 27 PG 74
PB 23 PG 5-6

S 60°50'37.0"E
-L- PC Sta. 47+51.71

S 61°17'10.9"E

S 60°29'53.8"E

-L- PT Sta. 49+06.26

N 29°05'39"E
180.00'

N 29°05'42"E
20.33'

N 29°08'55"E
180.00'

N 60°54'15"W
169.81'

N 29°08'55"E
92.50'

N 60°54'15"W
165.00'

N 29°08'55"E
20.38'

N 29°08'55"E
92.50'

N 61°04'04"W
10.00'

N 60°49'38"W
200.04'

N 29°08'55"E
3222.26'

55+00

60+00

-L-