
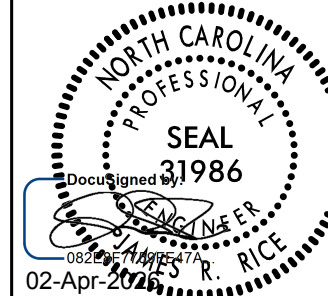


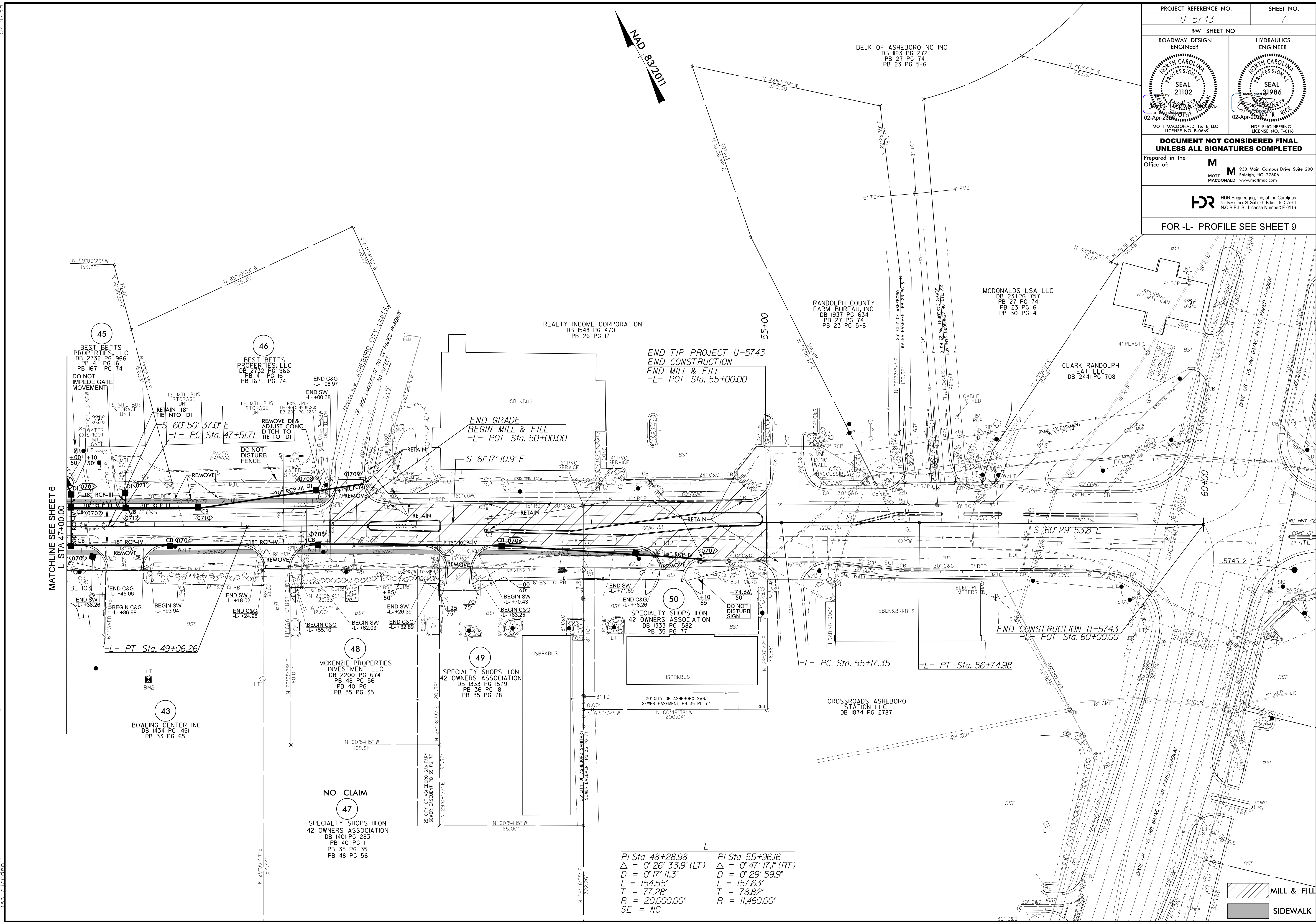


5/14/2026

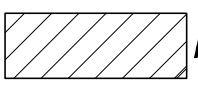

4/1/2026
ng\hmm\ar\al\jor\66165\d017743\U-5743_rdy_psh07.dgn

PROJECT REFERENCE NO. U-5743		SHEET NO. 7	
RW SHEET NO.			
ROADWAY DESIGN ENGINEER		HYDRAULICS ENGINEER	
 NORTH CAROLINA PROFESSIONAL SEAL 21102 JAMES R. RICE 02-Apr-2016		 NORTH CAROLINA PROFESSIONAL SEAL 31986 JAMES R. RICE 02-Apr-2016	
MOTT MACDONALD I & E, LLC LICENSE NO. F-0669 HDR ENGINEERING LICENSE NO. F-0116			
DOCUMENT NOT CONSIDERED FINAL UNLESS ALL SIGNATURES COMPLETED			
Prepared in the Office of:			
		930 Main Campus Drive, Suite 200 Raleigh, NC 27606 www.mottmac.com	
			
HDR Engineering, Inc. of the Carolinas 55 Fayetteville St., Suite 200, Raleigh, NC 27601 N.C.B.E.L.S. License Number: F-0116			
FOR -L- PROFILE SEE SHEET 9			



-L-

PI Sta 48+28.98	PI Sta 55+96.16
$\Delta = 0' 26' 33.9''$ (LT)	$\Delta = 0' 47' 17.1''$ (RT)
$D = 0' 17' 11.3''$	$D = 0' 29' 59.9''$
$L = 154.55'$	$L = 157.63'$
$T = 77.28'$	$T = 78.82'$
$R = 20,000.00'$	$R = 11,460.00'$
$SE = NC$	

	MILL & FILL
	SIDEWALK