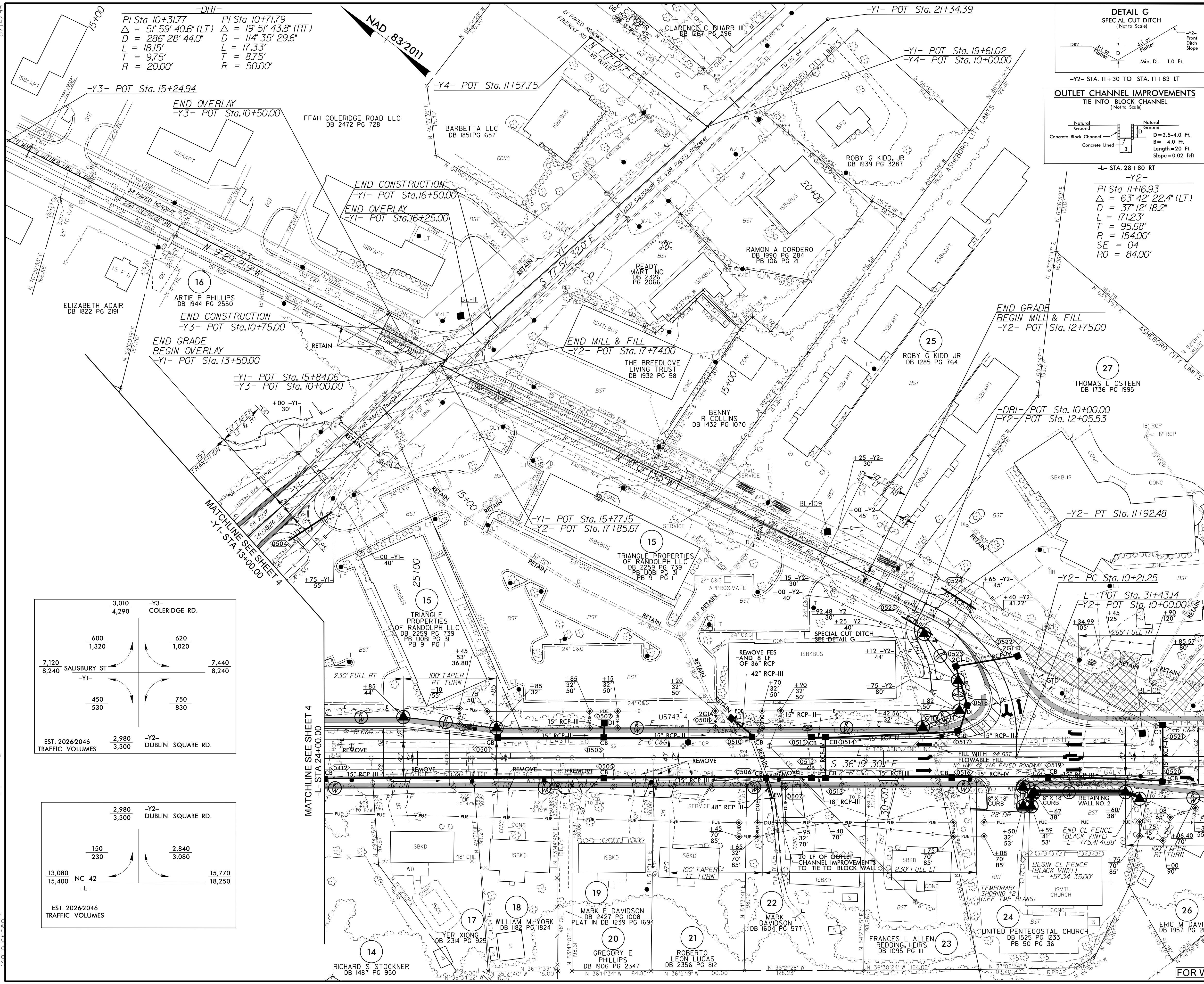
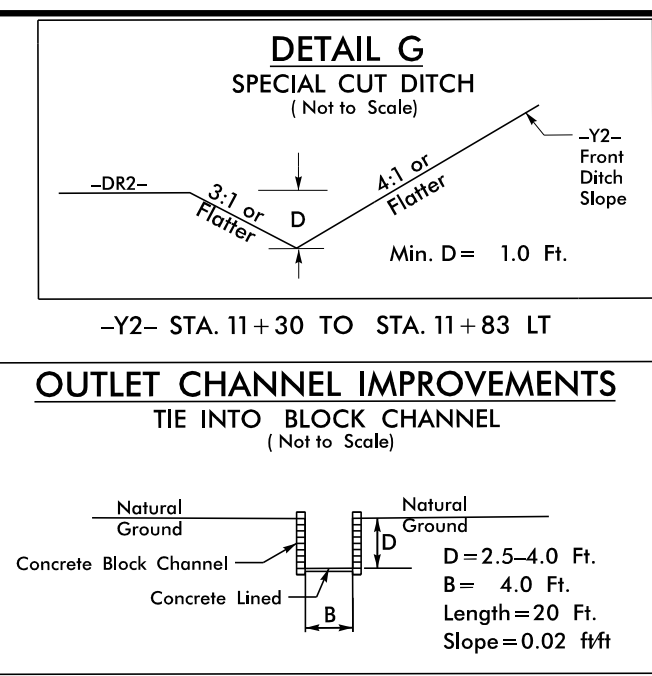


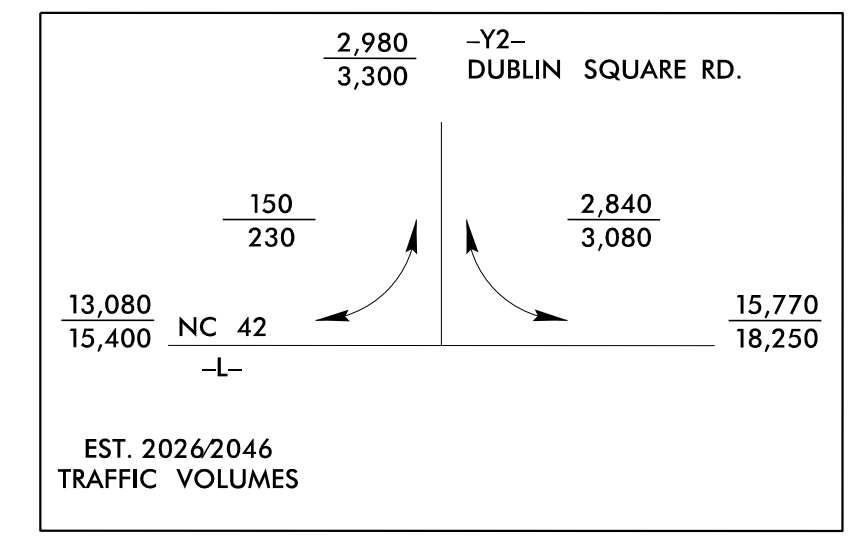
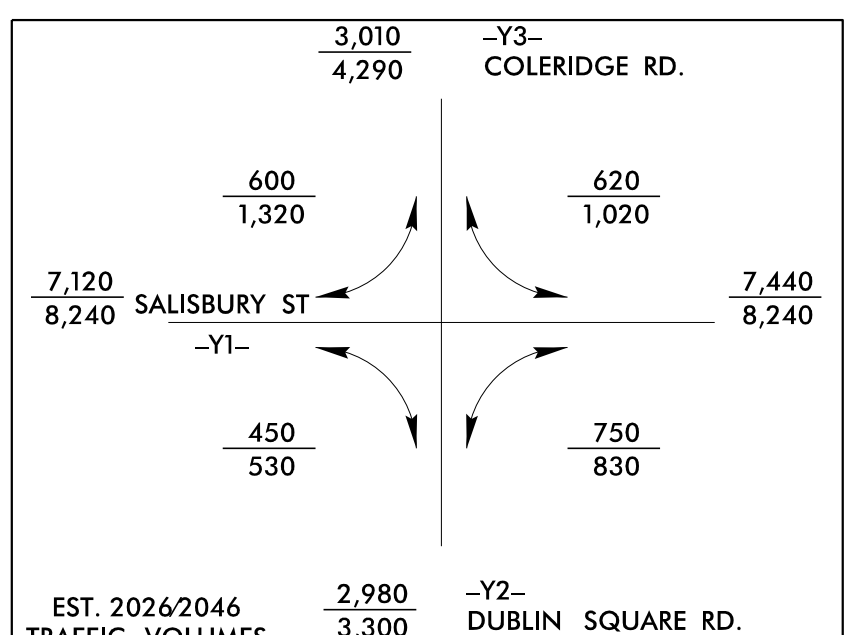
5/14/19
4/2/2026
ng\hmm\rs\1172026_jor66165_d0177431\U-5743_rdy_psh05.dgn



-DRI-
 PI Sta 10+31.77 PI Sta 10+71.79
 $\Delta = 51' 59" 40.6" (LT)$ $\Delta = 19' 51" 43.8" (RT)$
 $D = 286' 28" 44.0"$ $D = 114' 35" 29.6"$
 $L = 18.15'$ $L = 17.33'$
 $T = 9.75'$ $T = 8.75'$
 $R = 20.00'$ $R = 50.00'$



-Y2-
 PI Sta 11+16.93
 $\Delta = 63' 42" 22.4" (LT)$
 $D = 37' 12" 18.2"$
 $L = 171.23'$
 $T = 95.68'$
 $R = 154.00'$
 $SE = 04$
 $RO = 84.00'$



PROJECT REFERENCE NO. U-5743 SHEET NO. 5

RW SHEET NO. ENGINEER

HYDRAULICS ENGINEER

SEAL 21102

SEAL 31986

DOCUMENT NOT CONSIDERED FINAL UNLESS ALL SIGNATURES COMPLETED

Prepared in the Office of: MOTT MACDONALD 1 & E, LLC LICENSE NO. E-0669

MOTT MACDONALD 930 Main Campus Drive, Suite 200 Raleigh, NC 27606 www.mottmac.com

FOR HDR Engineering, Inc. of the Carolinas 555 Fayetteville St., Suite 900 Raleigh, NC 27601 N.C.B.E.L.S. License Number: F-0116

FOR -L- PROFILE SEE SHEET 8
 FOR -Y1- PROFILE SEE SHEET 10
 FOR -Y2- PROFILE SEE SHEET 10
 FOR -Y3- PROFILE SEE SHEET 11
 FOR -DR1- PROFILE SEE SHEET 12
 FOR ISLAND DETAIL SEE SHEET 2B-1

- OVERLAY / MILL & FILL
- PAVEMENT REMOVAL
- MONOLITHIC ISLAND
- PAVED SHOULDER
- SIDEWALK
- TEMPORARY SHORING

FOR WALL PLANS SEE SHEETS W-1 THRU W-5