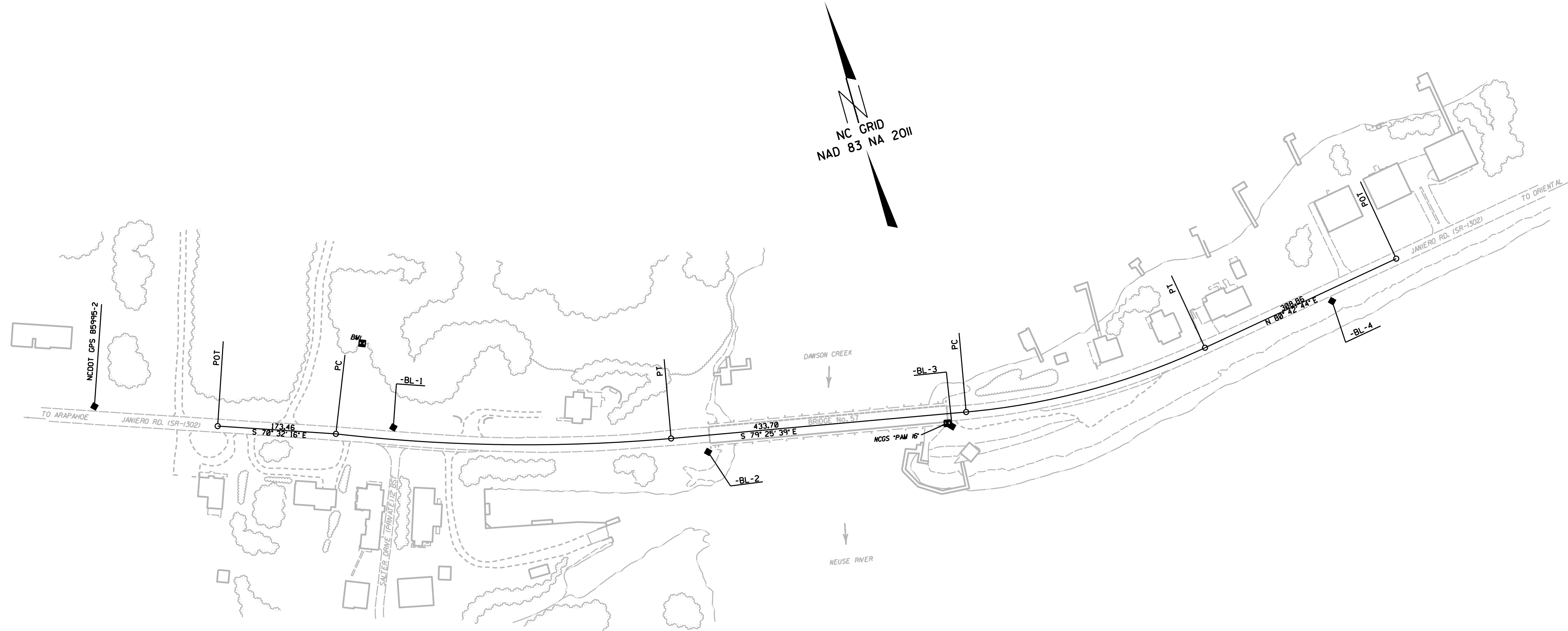


# SURVEY CONTROL SHEET B-5995

W/EXISTING CENTERLINE ALIGNMENTS PRIOR TO CONSTRUCTION

PROJECT REFERENCE NO. B-5995	SHEET NO. RW02C-1
<b>Location and Surveys</b>	
NCDOT LOCATION & SURVEYS	



BASELINE					
BL	POINT	DESC.	NORTH	EAST	ELEVATION
	GPS2	NCDOT GPS B5995	460362.4119	2670660.6655	9.09
1		BL-1	460214.4170	2671073.6470	6.05
2		BL-2	460055.2288	2671507.5805	11.20
3		BL-3	459994.6716	2671861.6430	11.56
4		BL-4	460020.5945	2672446.7699	5.09

EXISTING ALIGNMENT										
EL	POINT	N	E	BEARING	DIST	DELTA	D	L	T	R
	POT	460285.926	2670826.604	S 70°32'15.6" E	173.46					
	LINE	460228.133	2670990.149							
	PC	460228.133	2670990.149	S 73°31'07.3" E	490.80	11°33'42.1"(L.T)	02°21'06.1"	491.63	246.65	2436.36
	CURVE	460088.892	2671460.782							
	PT	460088.892	2671460.782	S 79°25'39.4" E	433.70					
	LINE	460009.318	2671887.119							
	PC	460009.318	2671887.119	S 89°21'27.5" E	362.14	19°51'36.2"(L.T)	05°27'24.3"	363.95	183.82	1050.00
	CURVE	460005.258	2672249.232							
	PT	460005.258	2672249.232	N 80°42'44.4" E	308.86					
	LINE	460005.258	2672249.232							
	POT	460055.105	2672554.043							

BENCHMARKS

.....

BM1 ELEVATION = 8.41  
 N 460345 E 2671063  
 BENCHMARK SET IN 15" HARDWOOD  
 .....

.....

PAM16 ELEVATION = 13.20  
 N 460001 E 2671856  
 PUBLISHED ELEVATION IS 13.43 FEET  
 .....

**NOTES:**

1. PROJECT CONTROL WAS ESTABLISHED USING GNSS, THE GLOBAL NAVIGATION SATELLITE SYSTEM.
2. THE SURVEY CONTROL DATA FOR THIS PROJECT HAS BEEN COMPILED FROM VARIOUS SOURCES. IF FURTHER INFORMATION REGARDING PROJECT CONTROL IS NEEDED, PLEASE CONTACT THE LOCATION AND SURVEYS UNIT.

REVISIONS

25-MAR-2018 13:52  
 N:\BRI\06\08\B5995\Control\_Sheets\B5995\_LS\_rw2c.dgn  
 merhodes1 AT LSD2-299767