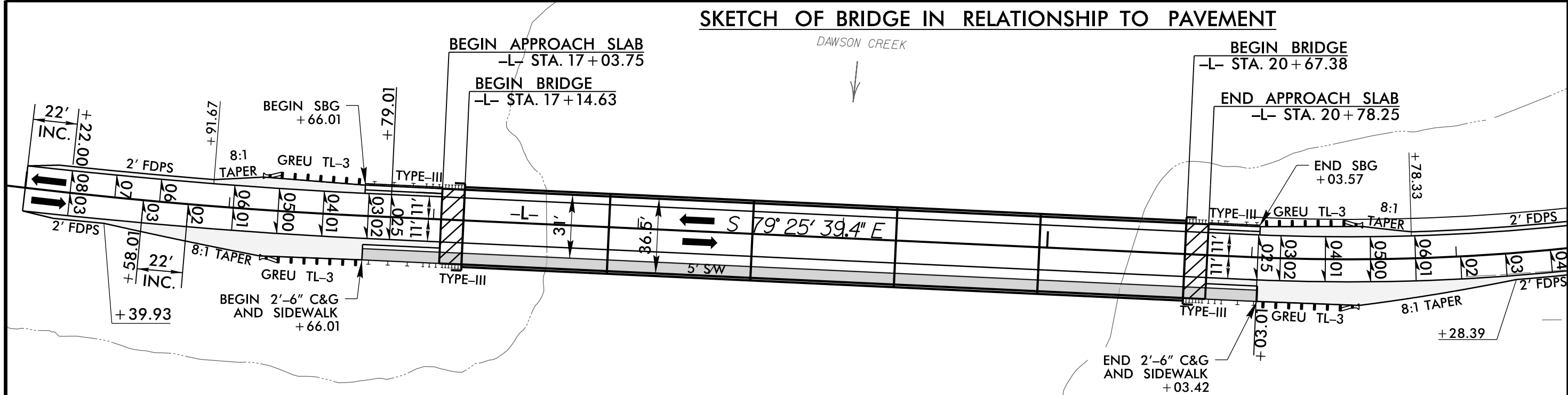
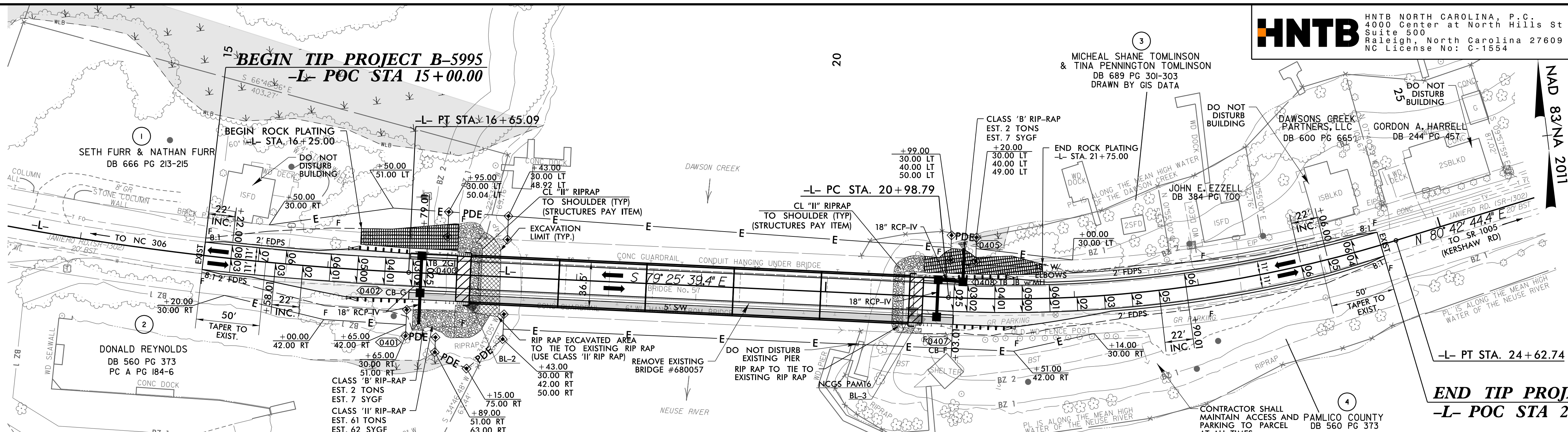
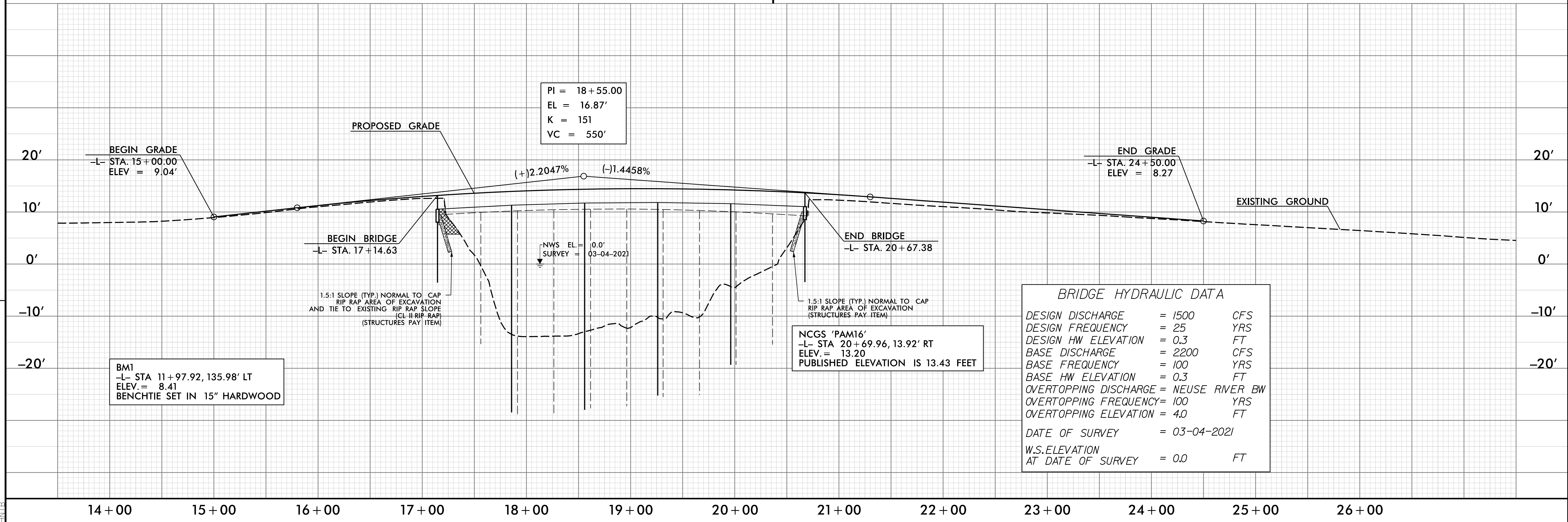


PROJECT REFERENCE NO. B-5995	SHEET NO. 4
RW SHEET NO.	
ROADWAY DESIGN ENGINEER	HYDRAULICS ENGINEER
DOCUMENT NOT CONSIDERED FINAL UNLESS ALL SIGNATURES COMPLETED	



404 WETLANDS
 CAMA WETLANDS
 MATERIAL TO BE REMOVED
 NOTE: ALL RIP RAP SHALL BE GRANITE RIP RAP
 FOR STRUCTURE PLANS, SEE SHEETS S-1 THRU S-25

-L-
 PI Sta 14+20.11 PI Sta 22+82.61
 $\Delta = 11' 33" 42.1" (LT)$ $\Delta = 19' 51" 36.2" (LT)$
 $D = 2' 21" 06.1"$ $D = 5' 27" 24.3"$
 $L = 491.63'$ $L = 363.95'$
 $T = 246.65'$ $T = 183.82'$
 $R = 2,436.36'$ $R = 1,050.00'$
 $SE = EXIST$ $SE = 0.06$
 $RO = N/A$ $RO = 132'$



BRIDGE HYDRAULIC DATA

DESIGN DISCHARGE	= 1500	CFS
DESIGN FREQUENCY	= 25	YRS
DESIGN HW ELEVATION	= 0.3	FT
BASE DISCHARGE	= 2200	CFS
BASE FREQUENCY	= 100	YRS
BASE HW ELEVATION	= 0.3	FT
OVERTOPPING DISCHARGE	= NEUSE RIVER BW	
OVERTOPPING FREQUENCY	= 100	YRS
OVERTOPPING ELEVATION	= 4.0	FT
DATE OF SURVEY	= 03-04-2021	
W.S. ELEVATION AT DATE OF SURVEY	= 0.0	FT

REVISIONS

16-FEB-2026 16:22
 C:\pwworking\hntb\B5995_R01_PSH4.dgn
 HNTB