

09,08/99

TIP PROJECT: R-5858

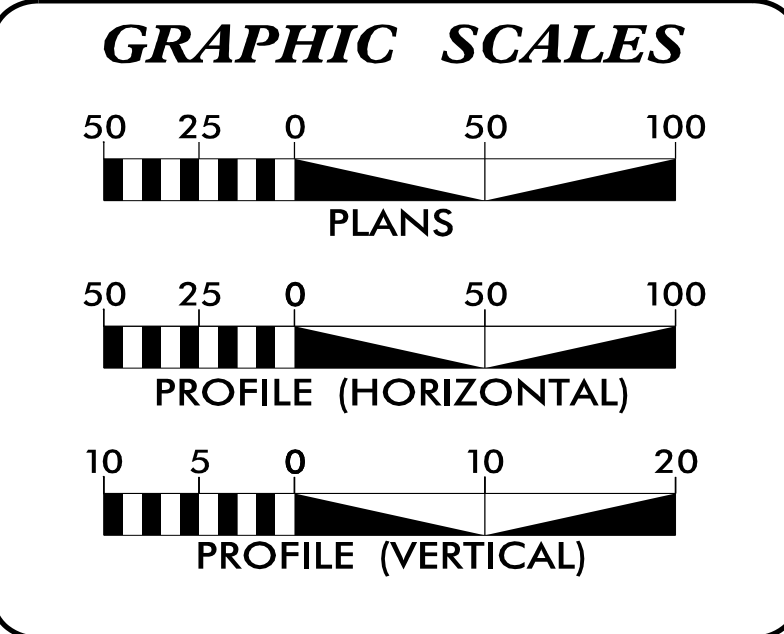
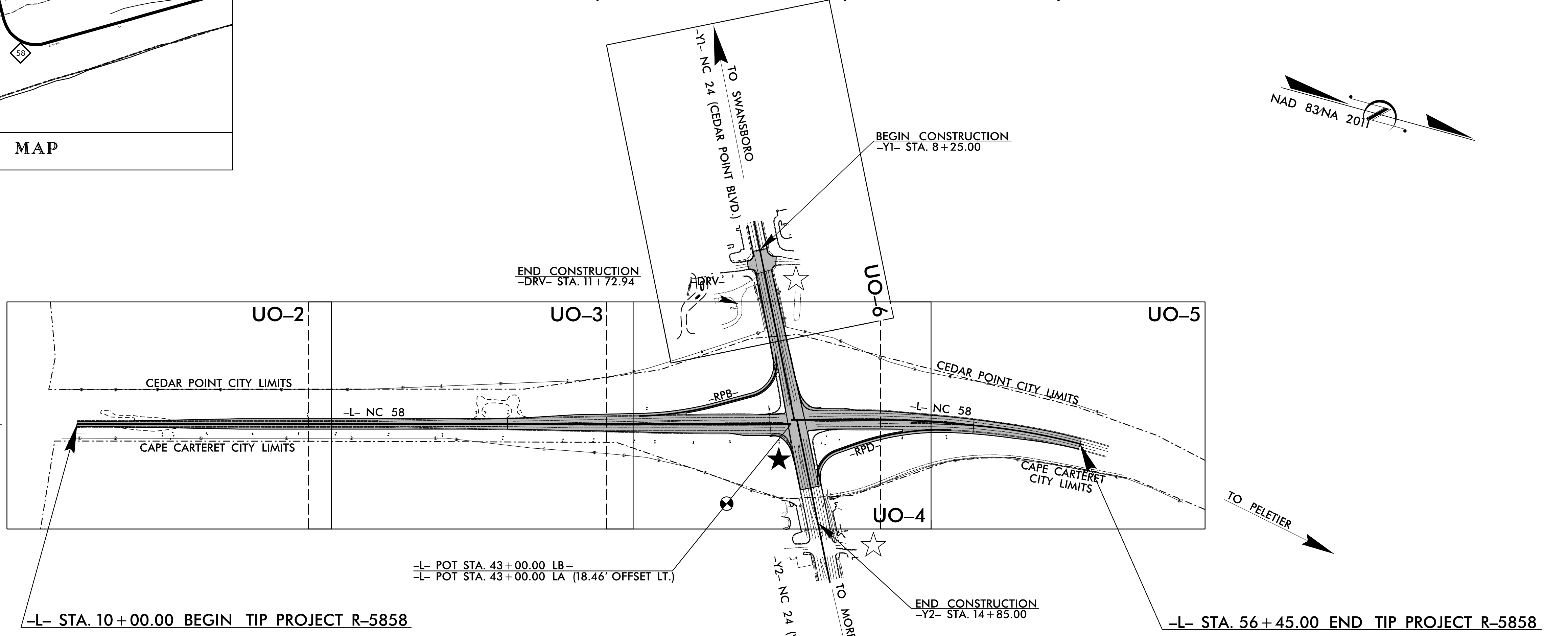
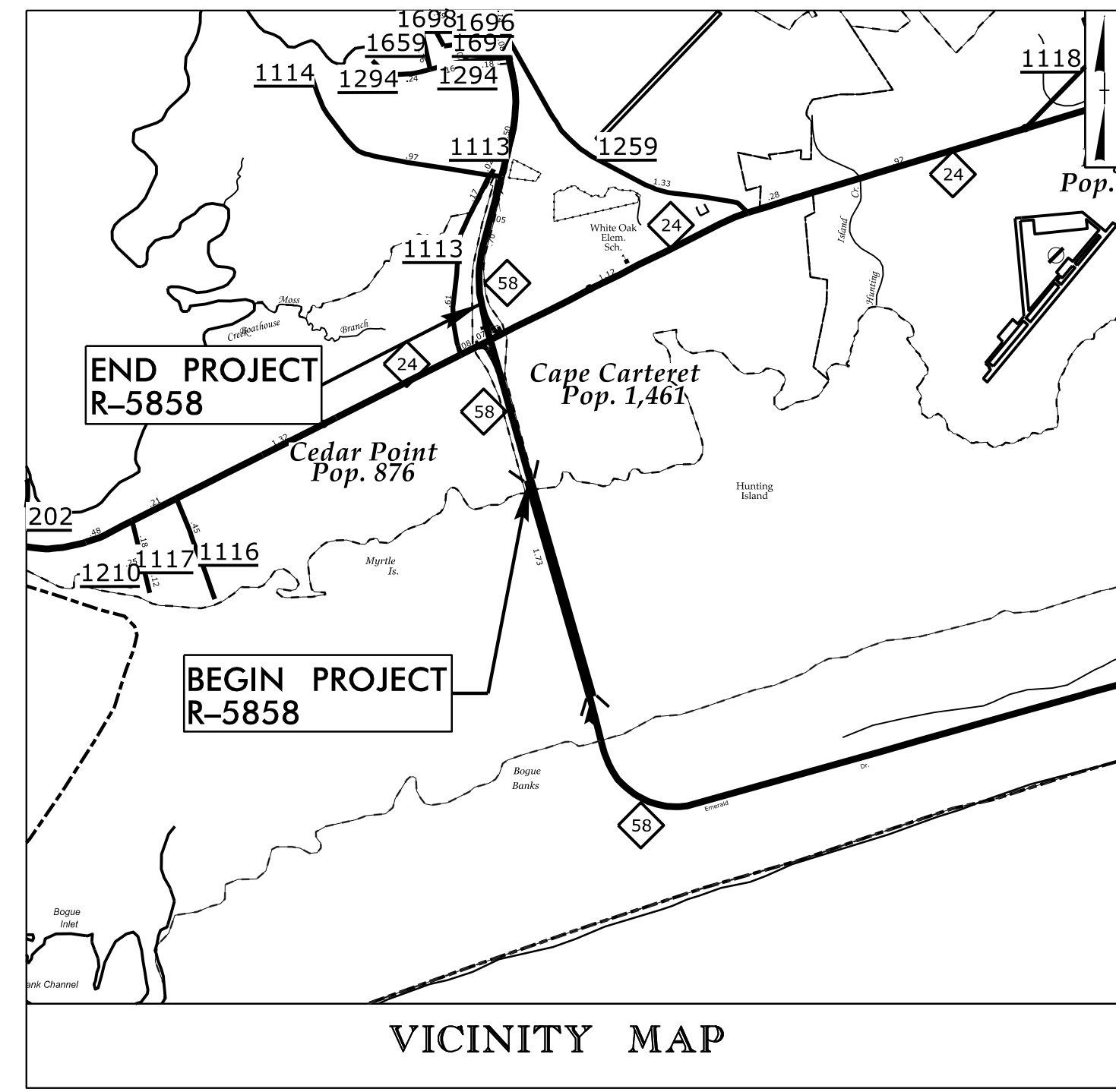
STATE OF NORTH CAROLINA
DIVISION OF HIGHWAYS

T.I.P. NO.	SHEET NO.
R-5858	UO-1

NOTE:
ALL UTILITY WORK SHOWN ON THIS SHEET WILL BE DONE BY OTHERS. NO PAYMENT WILL BE MADE TO THE CONTRACTOR FOR UTILITY WORK SHOWN ON THIS SHEET.

UTILITIES BY OTHERS PLANS
CARTERET COUNTY

LOCATION: NC 24 CARTERET COUNTY. AT NC 58 INTERSECTION
IN CAPE CARTERET. INTERSECTION IMPROVEMENTS.
TYPE OF WORK: POWER, COMMUNICATIONS, NATURAL GAS, AND WATER



SHEET NO.:	DESCRIPTION:
UO-1	TITLE SHEET
UO-2 THRU UO-6	UBO PLAN SHEETS

- UTILITY OWNERS WITH CONFLICTS
- (A) DISTRIBUTION - CARTERET - CRAVEN EMC
 - (B) TRANSMISSION - CARTERET - CRAVEN EMC
 - (C) DISTRIBUTION - PIEDMONT NATURAL GAS
 - (D) COMMUNICATIONS - MCNC
 - (E) COMMUNICATIONS - SEGRA
 - (F) COMMUNICATIONS - BRIGHTSPEED
 - (G) COMMUNICATIONS - CONTERRA
 - (H) WATER - WEST CARTERET WATER CORPORATION

PREPARED IN THE OFFICE OF:

GFT Infrastructure, Inc.
101 Autumn Hall Drive, Suite 210
Wilmington, NC 28403
910-523-5715
NC Lic. No. F-0270

William A. Pope, PE PROJECT UTILITY COORDINATOR

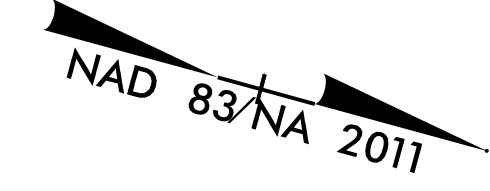
DIVISION OF HIGHWAYS
UTILITIES UNIT
1555 MAIL SERVICES CENTER
RALEIGH, NC 27699-1555
PHONE (919) 707-6690
FAX (919) 250-4151

David Kramer UTILITIES ENGINEER
CHAD MILLS UTILITIES COORDINATOR

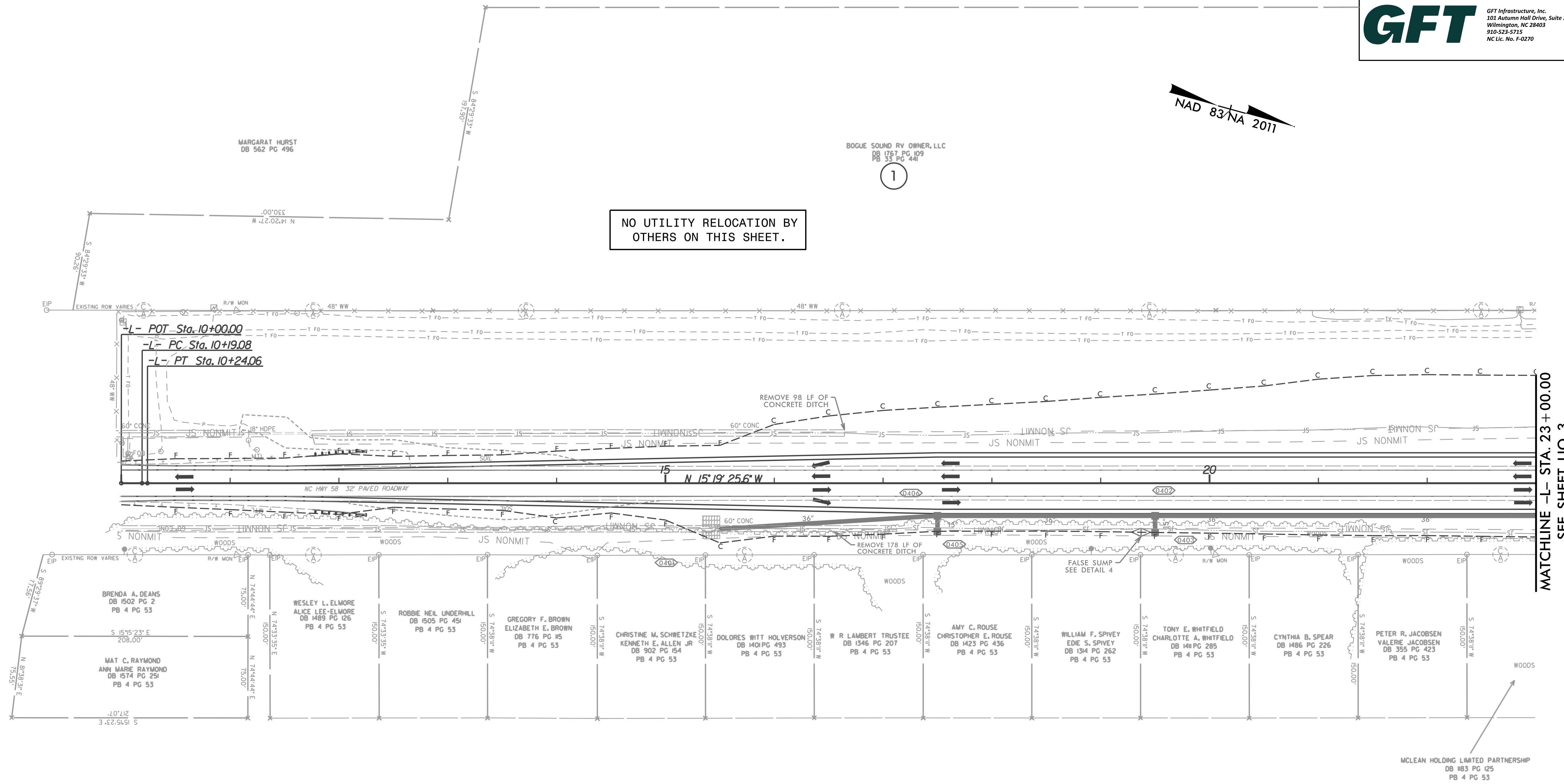
2/24/2026
U:\proj\NR-5858_U1_+sh_UO1_psh.dgn
USER:wdope

UTILITIES BY OTHERS

ALL PROPOSED UTILITY WORK SHOWN ON THIS SHEET WILL BE DONE BY OTHERS. NO PAYMENT WILL BE MADE TO THE CONTRACTOR FOR PROPOSED UTILITY WORK SHOWN ON THIS SHEET.



NO UTILITY RELOCATION BY OTHERS ON THIS SHEET.



MATCHLINE -L- STA. 23+00.00
SEE SHEET UO-3

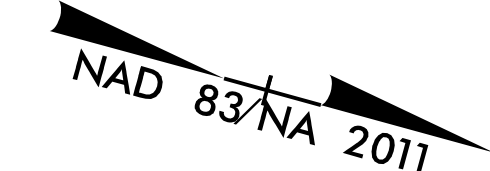
MCLEAN HOLDING LIMITED PARTNERSHIP
DB 183 PG 125
PB 4 PG 53

5/14/99

2/24/2006 8:58. Ut_-4_U02_esh.dgn

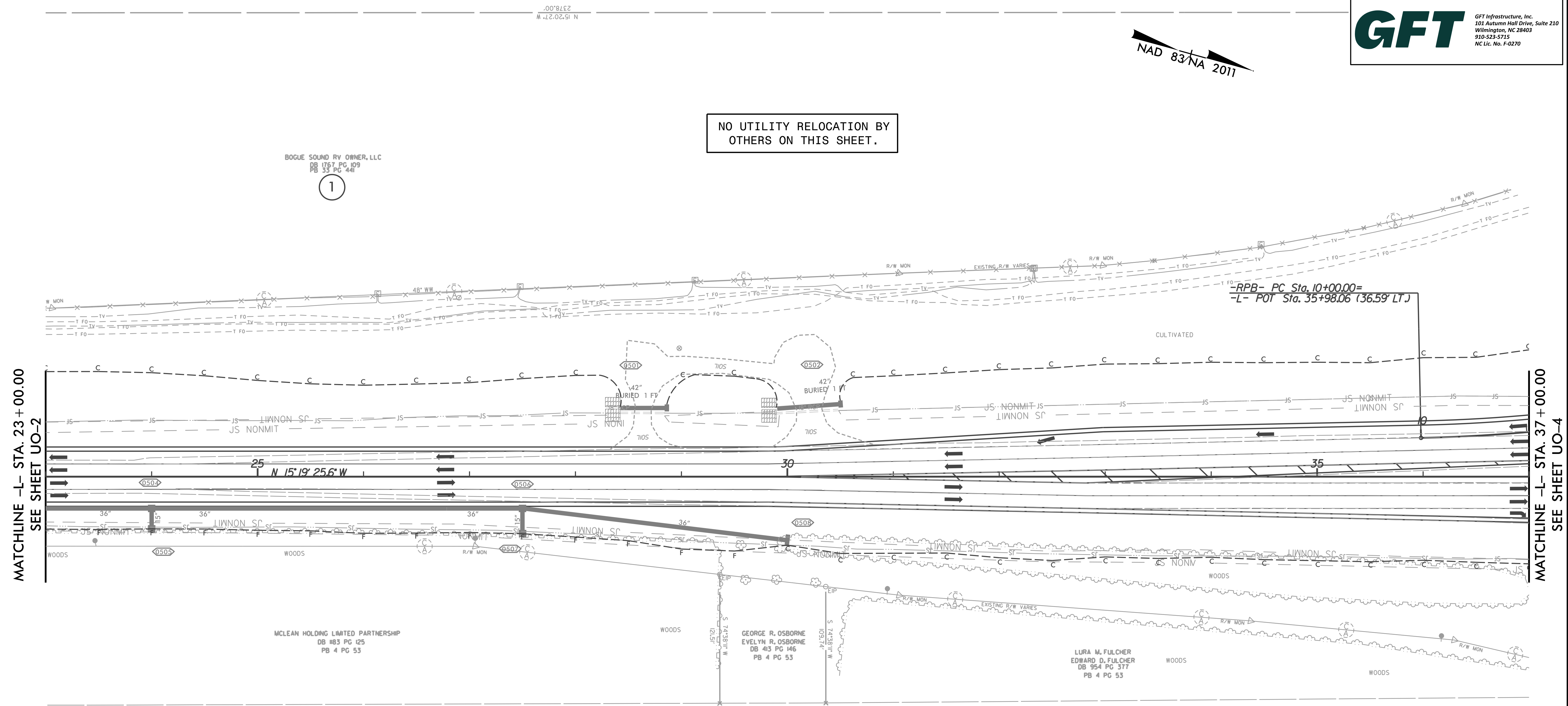
UTILITIES BY OTHERS

ALL PROPOSED UTILITY WORK SHOWN ON THIS SHEET WILL BE DONE BY OTHERS. NO PAYMENT WILL BE MADE TO THE CONTRACTOR FOR PROPOSED UTILITY WORK SHOWN ON THIS SHEET.



NO UTILITY RELOCATION BY OTHERS ON THIS SHEET.

BOGUE SOUND RV OWNER, LLC
DB 1767 PG 109
PB 33 PG 441
1



MATCHLINE -L- STA. 23 + 00.00
SEE SHEET UO-2

MATCHLINE -L- STA. 37 + 00.00
SEE SHEET UO-4

MCLEAN HOLDING LIMITED PARTNERSHIP
DB 883 PG 125
PB 4 PG 53

GEORGE R. OSBORNE
EVELYN R. OSBORNE
DB 413 PG 146
PB 4 PG 53

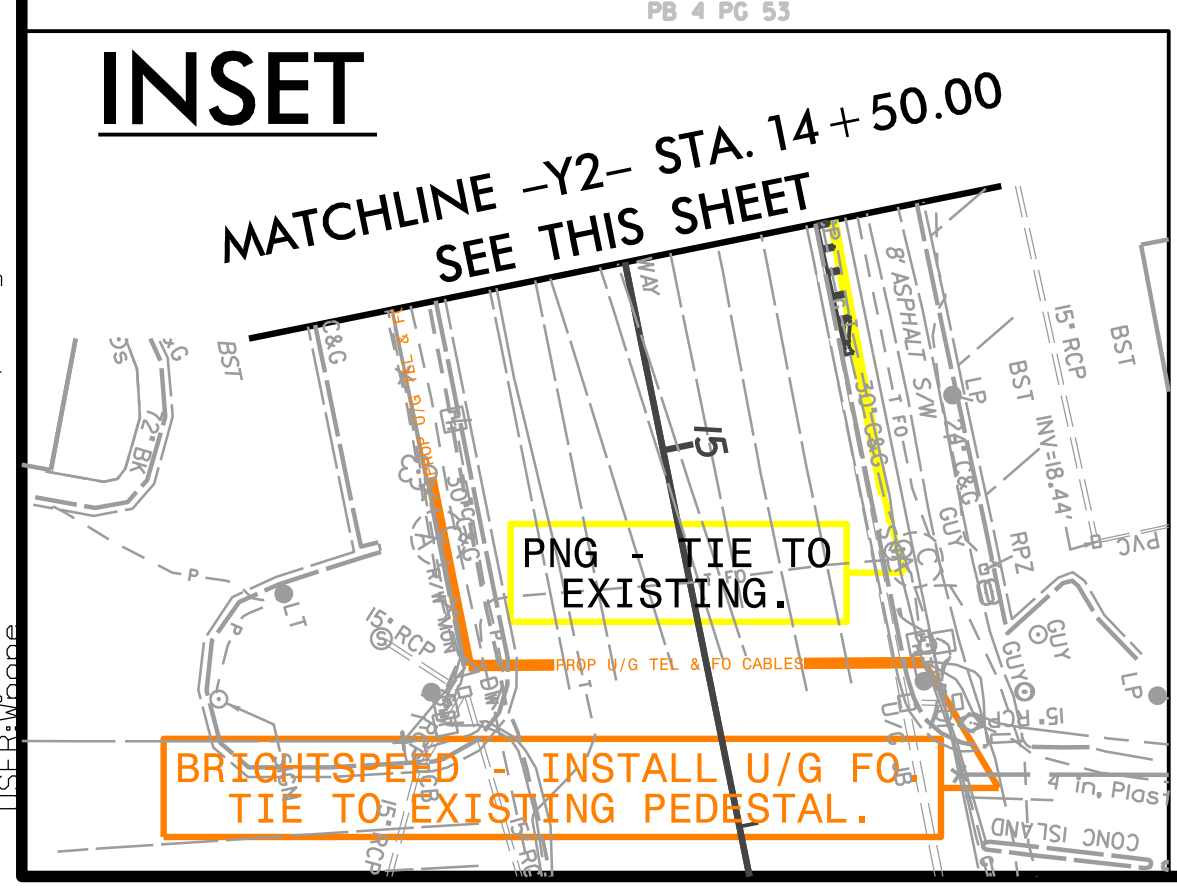
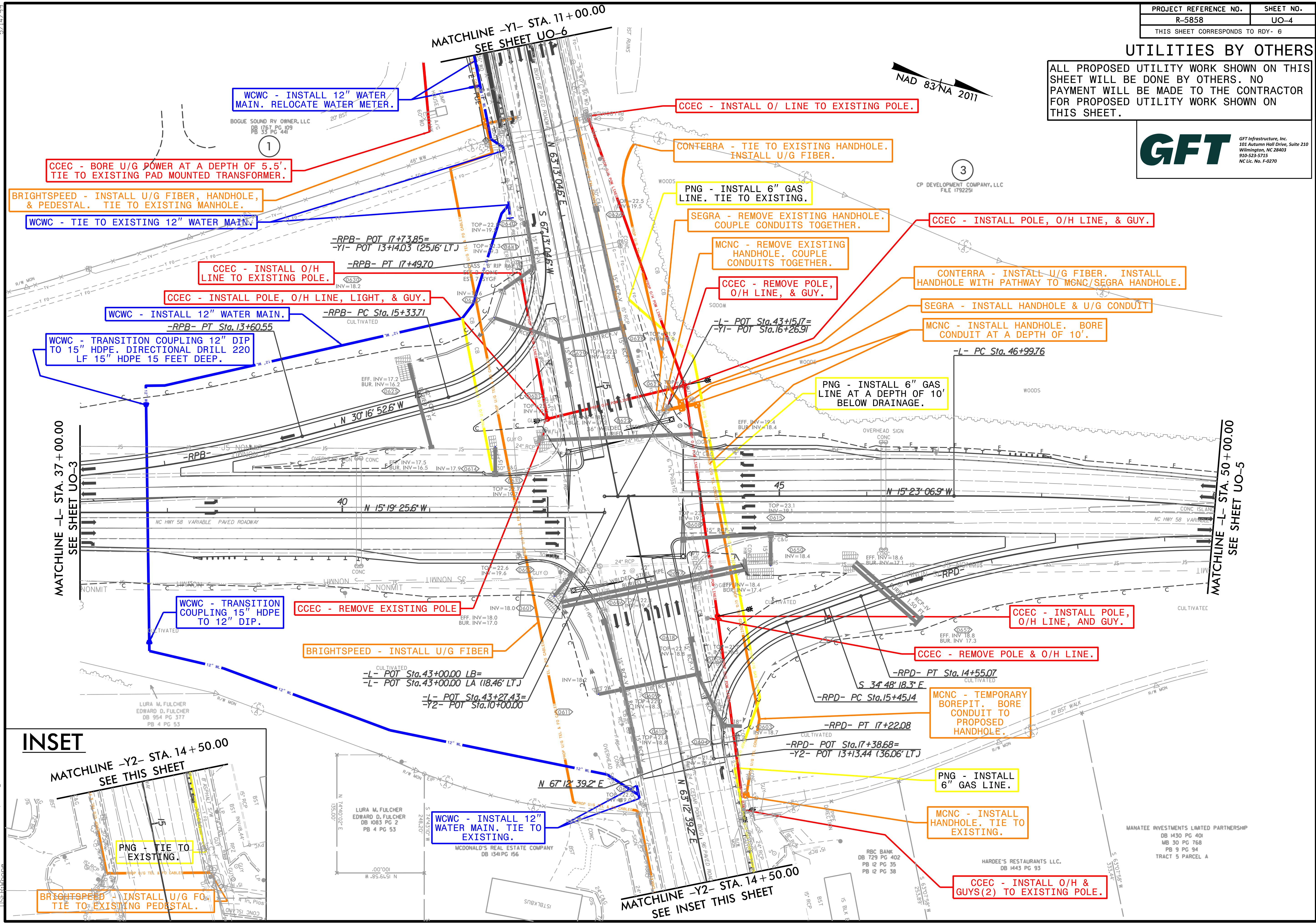
LURA M. FULCHER
EDWARD D. FULCHER
DB 954 PG 377
PB 4 PG 53

5/14/2011

2/24/2011 10:58:58 Ut-5-U03_psh.dgn

UTILITIES BY OTHERS

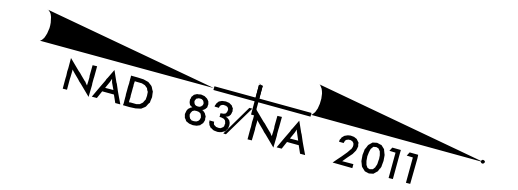
ALL PROPOSED UTILITY WORK SHOWN ON THIS SHEET WILL BE DONE BY OTHERS. NO PAYMENT WILL BE MADE TO THE CONTRACTOR FOR PROPOSED UTILITY WORK SHOWN ON THIS SHEET.



5/14/2016 2:24:20 PM R-5858_UO-4.dwg

UTILITIES BY OTHERS

ALL PROPOSED UTILITY WORK SHOWN ON THIS SHEET WILL BE DONE BY OTHERS. NO PAYMENT WILL BE MADE TO THE CONTRACTOR FOR PROPOSED UTILITY WORK SHOWN ON THIS SHEET.



3
CP DEVELOPMENT COMPANY, LLC
FILE 1792251

NO UTILITY RELOCATION BY OTHERS ON THIS SHEET.

MATCHLINE -L- STA. 50+00.00
SEE SHEET UO-4

-L- PT Sta. 50+15.82

N 10° 12' 40.5" W
-L- PC Sta. 51+43.19

-L- PT Sta. 56+62.48

-RPD- PC Sta. 10+00.00=
-L- POT Sta. 50+43.85 (30.39' RT.)

MANATEE INVESTMENTS LIMITED PARTNERSHIP
DB 1430 PG 401
MB 30 PG 768
PB 9 PG 94
TRACT 5 PARCEL A

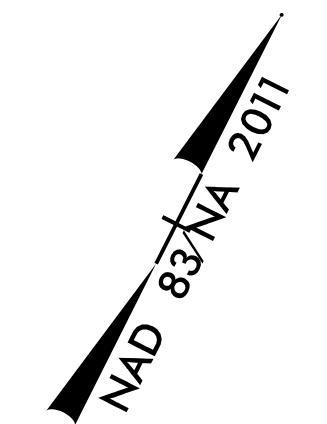
MANATEE INVESTMENTS LIMITED PARTNERSHIP
DB 1430 PG 401
MB 30 PG 768
PB 9 PG 94
TRACT 5 PARCEL B

CARTERET RECREATION LLC
DB 1461 PG 85

5/14/2016 2:24:20 PM 20160508.UO-5.dgn

UTILITIES BY OTHERS

ALL PROPOSED UTILITY WORK SHOWN ON THIS SHEET WILL BE DONE BY OTHERS. NO PAYMENT WILL BE MADE TO THE CONTRACTOR FOR PROPOSED UTILITY WORK SHOWN ON THIS SHEET.



WCWC - TIE TO EXISTING 8" WATER MAIN. 12" TO 8" REDUCER

BRIGHTSPEED - INSTALL U/G FIBER. TIE TO EXISTING PEDESTAL.

WCWC - DRY BORE AND JACK 12" WATER MAIN WITH 24" STEEL ENCASEMENT PIPE.

WCWC - RECONNET WATER METERS (2). RELOCATE FIRE HYDRANT.

BRIGHTSPEED - INSTALL U/G FIBER & PEDESTAL.

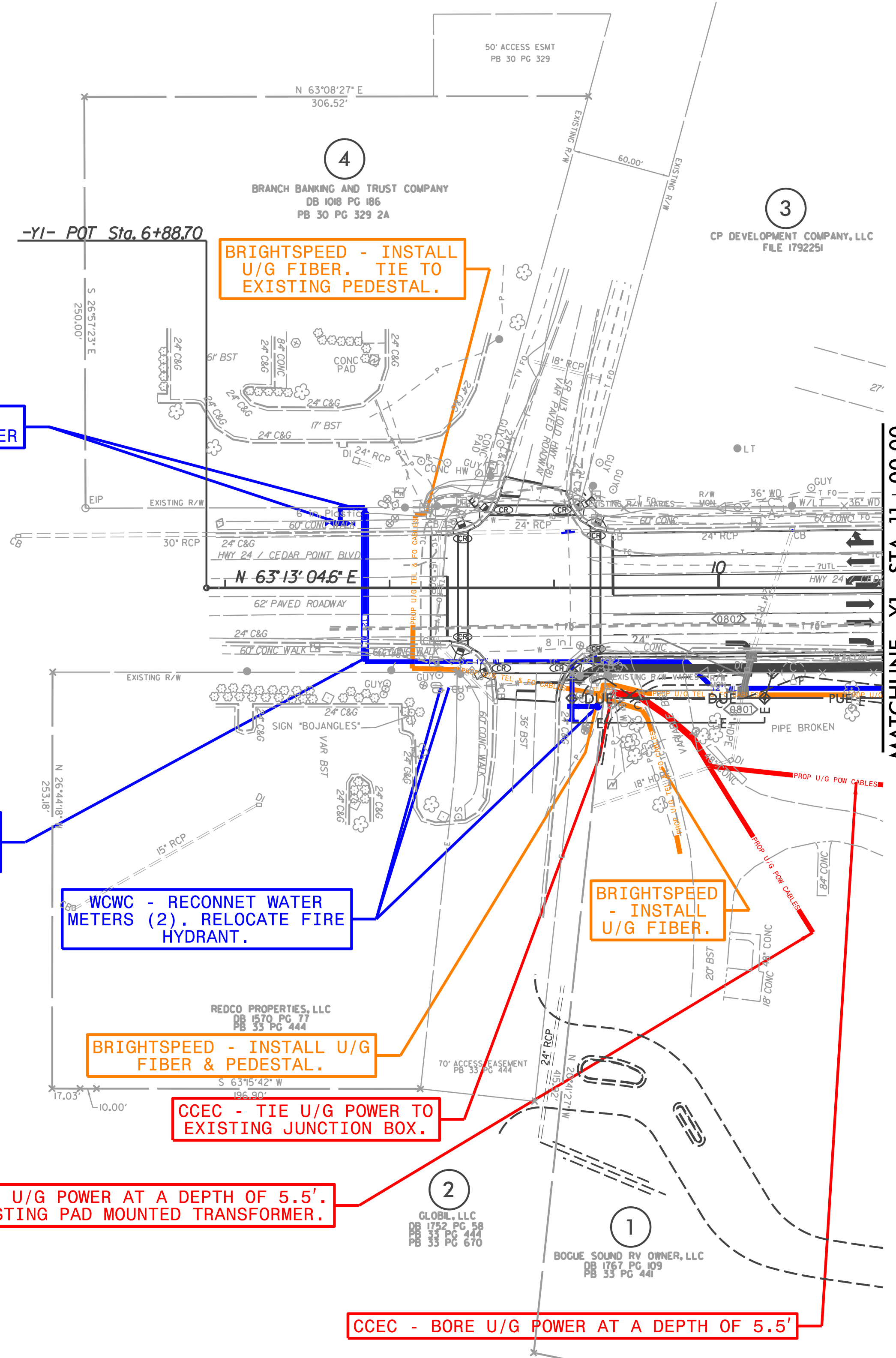
BRIGHTSPEED - INSTALL U/G FIBER.

CCEC - TIE U/G POWER TO EXISTING JUNCTION BOX.

CCEC - BORE U/G POWER AT A DEPTH OF 5.5'. TIE TO EXISTING PAD MOUNTED TRANSFORMER.

CCEC - BORE U/G POWER AT A DEPTH OF 5.5'

MATCHLINE -YI- STA. 11+00.00
SEE SHEET UO-4



5/14/2011 2:24:20 PM R-5858_UO-6.dwg