



STATE OF NORTH CAROLINA
DEPARTMENT OF TRANSPORTATION

ROY COOPER
GOVERNOR

J.R. "JOEY" HOPKINS
SECRETARY

May 29, 2024

MEMORANDUM TO:

Brian Harding, PE
Division Design Engineer
Division 3

FROM:

Craig Haden
GeoEnvironmental Project Manager
GeoEnvironmental Section
Geotechnical Engineering Unit

DocuSigned by:

Craig Haden

AE4AE3FF131F404...

TIP NO:

HE-0016

WBS:

51325.1.1

COUNTY:

BRUNSWICK

DIVISION

3

DESCRIPTION:

Constructing a new access loop road that connects to US 74 on each end.

SUBJECT:

Pre-Scoping Comments

The GeoEnvironmental Section performed a records search of readily available information for the given project study area to identify known and potential sites of concern. No sites of concern were identified within the project area. If the project limit changes, please let us know, so we can reevaluate the study area.

CC:

Matthew J. Alexander, PE, State Geotechnical Engineer
Brian Hanks, PE, State Structures Engineer
Brent Hall, Locations and Surveys
Keith T. Garry, State Utilities Manager
Anthony Law, Division Construction Engineer
Kaye Baggett, Division Right of Way Agent
Thomas Santee, PE, Geotechnical Regional Manager
Dean Argenbright, LG, Regional Geological Engineer
Bradley Bass, State Negotiator
row-notify@ncdot.gov
roadwaydesign@ncdot.gov
hydraulics_notify@ncdot.gov

File

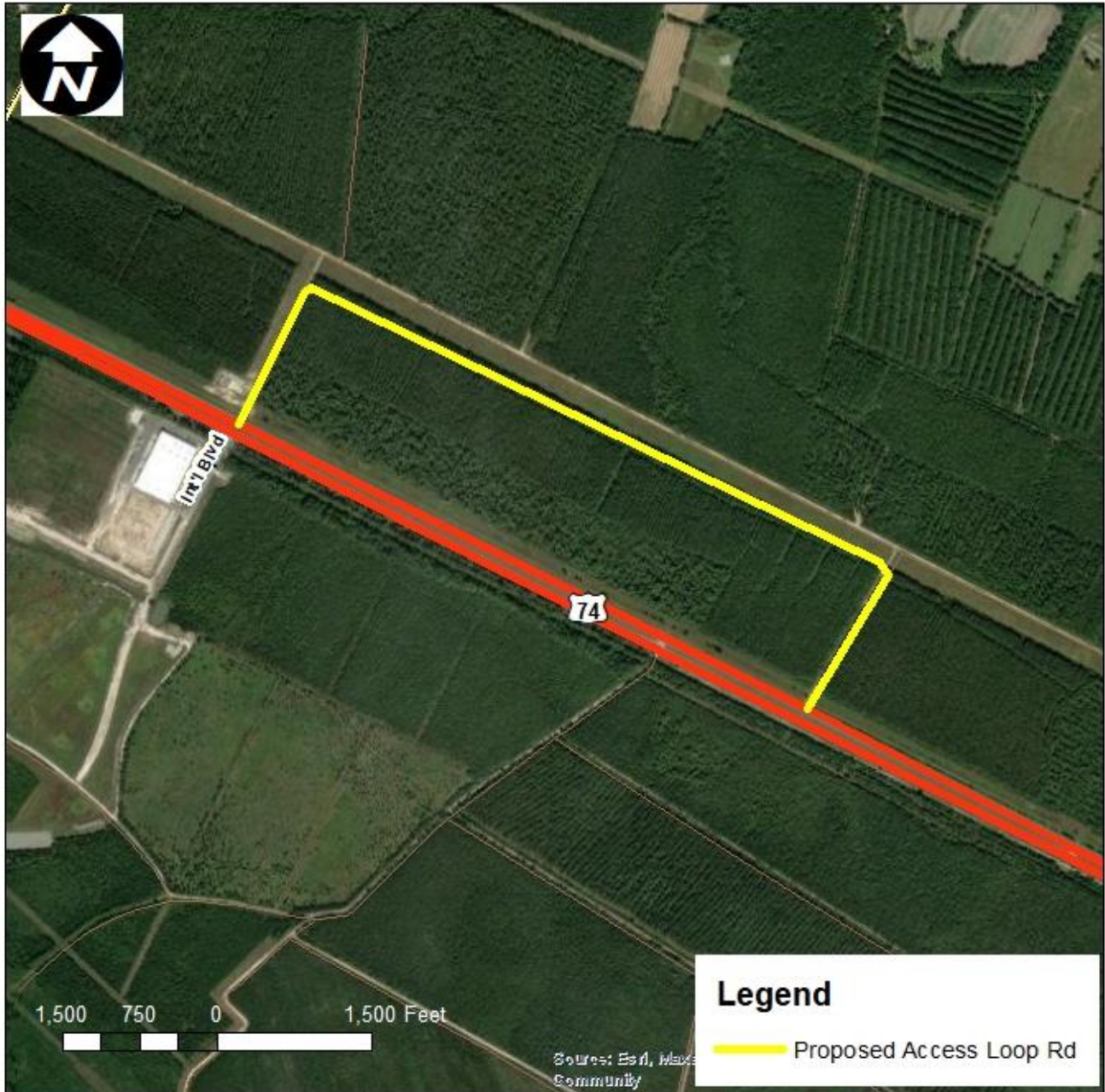
Mailing Address:
NC DEPARTMENT OF TRANSPORTATION
GEOTECHNICAL ENGINEERING UNIT
1589 MAIL SERVICE CENTER
RALEIGH NC 27699-1589

Telephone: 919-707-6850
Fax: 919-250-4237
Customer Service: 1-877-368-4968

Website: www.ncdot.gov

Location:
CENTURY CENTER COMPLEX
ENTRANCE B-2
1020 BIRCH RIDGE DRIVE
RALEIGH NC

Figure
Location of GeoEnvironmental Sites of Concern



Project 51325.1.1 (TIP # HE-0016)
New Route from 0.5 miles east of Brunswick Co. line to 1.5 miles east of Brunswick Co. line.
Construct new access loop rd for planned industrial park
Brunswick County



NC Department of Transportation
Geotechnical Engineering Unit
GeoEnvironmental Section

