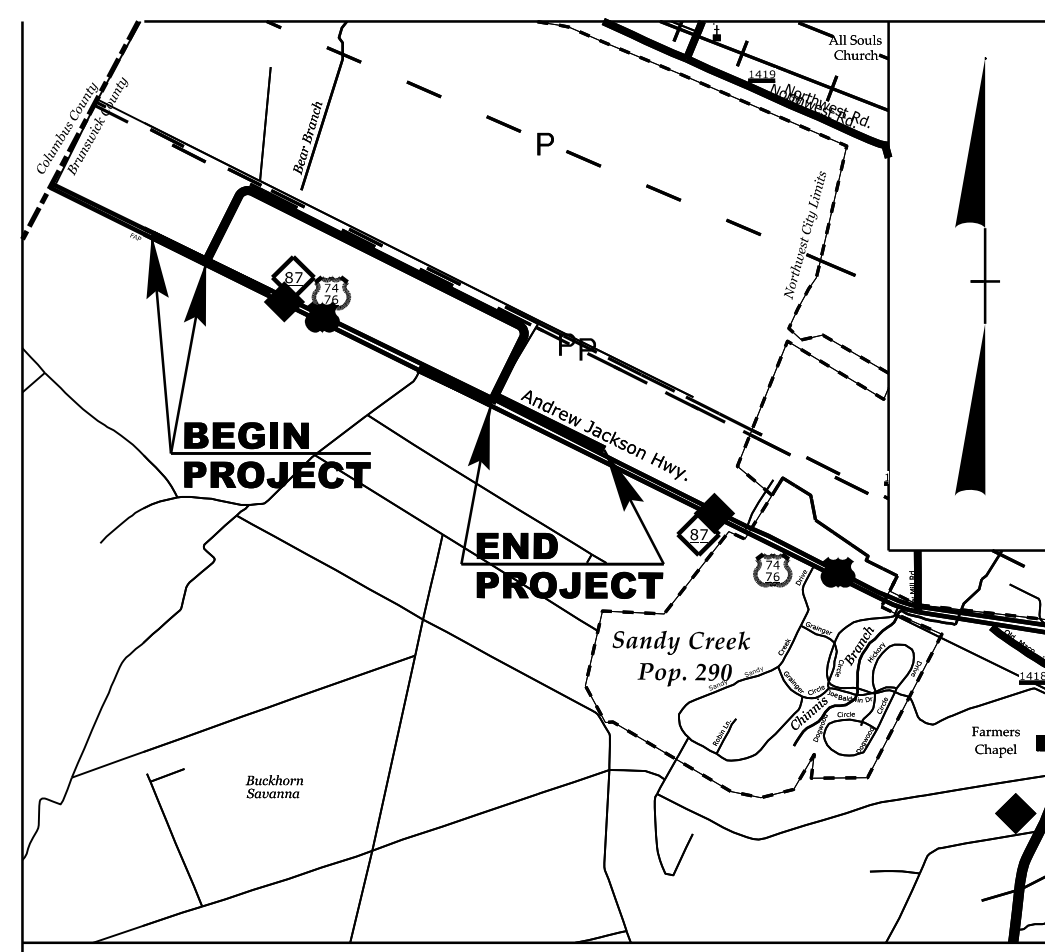


09/08/99

PROJECT: HE-0016



VICINITY MAP (NTS)

STATE OF NORTH CAROLINA  
DIVISION OF HIGHWAYS

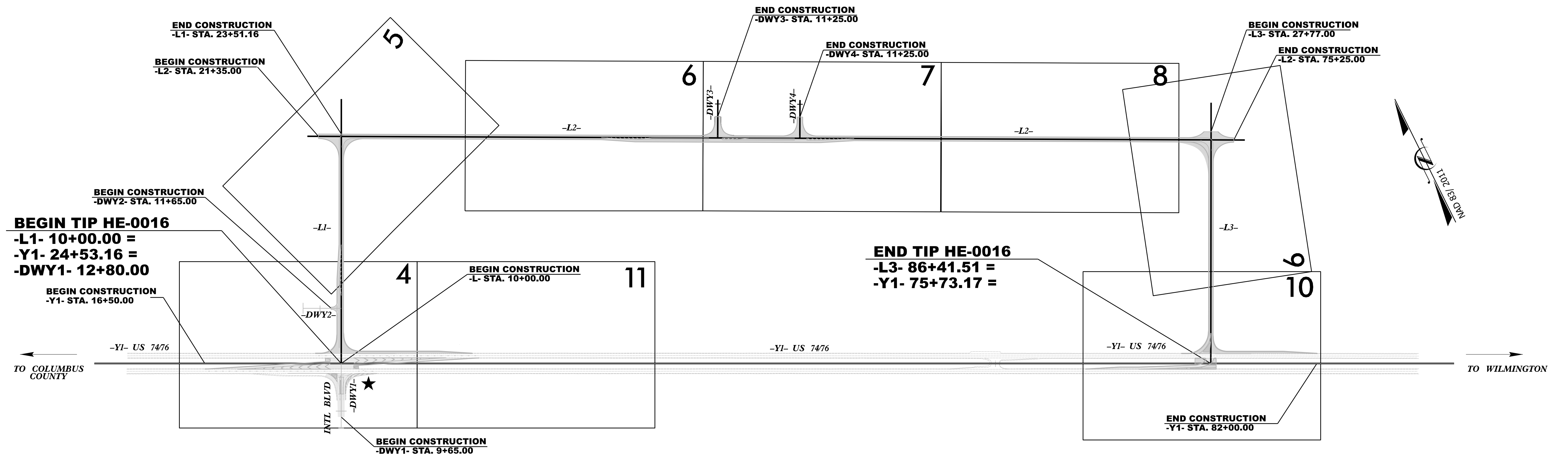
**UTILITIES BY OTHERS PLANS  
BRUNSWICK COUNTY**

LOCATION: *CONSTRUCT ROAD ON NEW LOCATION  
AND CONSTRUCT INTERSECTIONS  
WITH US 74 ON EAST AND WEST  
TERMINI*

TYPE OF WORK: *GRADING, DRAINAGE, PAVING,  
AND WIDENING*

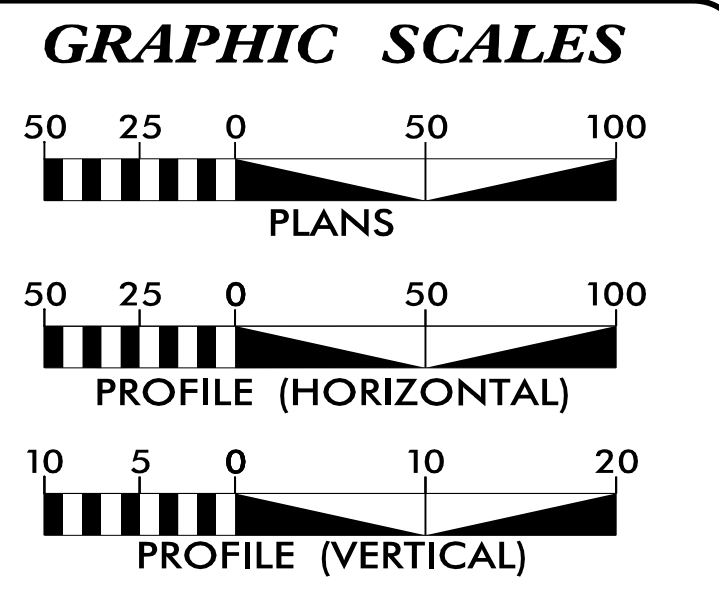
STATE PROJECT REFERENCE NO.	SHEET NO.
HE-0016	UO-1

NOTE:  
ALL UTILITY WORK SHOWN ON THIS SHEET WILL BE DONE BY OTHERS.  
NO PAYMENT WILL BE MADE TO THE CONTRACTOR FOR UTILITY WORK SHOWN ON THIS SHEET.



★ PROPOSED SIGNAL

DOCUMENT NOT CONSIDERED FINAL UNLESS ALL SIGNATURES COMPLETED



**INDEX OF SHEETS**

SHEET NO.:	DESCRIPTION:
UO-1	TITLE SHEET
UO-2	SYMBOLOLOGY SHEET
UO-3	SHEET OMITTED
UO-4 THRU UO-11	UBO PLAN SHEETS

**UTILITY OWNERS WITH CONFLICTS**

(A) COMMUNICATIONS - AT&T  
 (B) COMMUNICATIONS - CHARTER  
 (C) COMMUNICATIONS - DUKE ENERGY  
 (D) POWER - DUKE ENERGY  
 (E) WATER & SEWER - BRUNSWICK COUNTY

PREPARED IN THE OFFICE OF:

1223 Jones Franklin Rd.  
Raleigh, N.C. 27606  
License No. F-0377  
Bus: 919 851 8077  
Fax: 919 851 8107

TRANSPORTATION PLANNING/DESIGN - BRIDGE/STRUCTURE DESIGN  
CIVIL/SITE DESIGN - GIS/GPS - SURVEY/SUE - UTILITIES - CONSTRUCTION OBSERVATION

**PANKIL K. PATEL** UTILITY PROJECT MANAGER  
**TREVER REEVES** PROJECT UTILITY COORDINATOR

DIVISION OF HIGHWAYS  
DIVISION 3  
5501 Barbados Blvd  
Castle Hayne NC, 28429

**BRIAN HARDING** NCDOT PROJECT MANAGER  
**TIM GODWIN** NCDOT UTILITY ENGINEER

5/12/2025  
\\LUBON\Proj\HE0016\_UO-1\TSH.dgn  
USER: TReeves

Note: Not to Scale

STATE OF NORTH CAROLINA, DIVISION OF HIGHWAYS  
CONVENTIONAL PLAN SHEET SYMBOLS

BOUNDARIES AND PROPERTY:

State Line	
County Line	
Township Line	
City Line	
Reservation Line	
Property Line	
Existing Iron Pin (EIP)	
Computed Property Corner	
Existing Concrete Monument (ECM)	
Parcel / Sequence Number	
Existing Fence Line	
Proposed Woven Wire Fence	
Proposed Chain Link Fence	
Proposed Barbed Wire Fence	
Existing Wetland Boundary	
Proposed Wetland Boundary	
Existing Endangered Animal Boundary	
Existing Endangered Plant Boundary	
Existing Historic Property Boundary	
Known Contamination Area: Soil	
Potential Contamination Area: Soil	
Known Contamination Area: Water	
Potential Contamination Area: Water	
Contaminated Site: Known or Potential	

BUILDINGS AND OTHER CULTURE:

Gas Pump Vent or U/G Tank Cap	
Sign	
Well	
Small Mine	
Foundation	
Area Outline	
Cemetery	
Building	
School	
Church	
Dam	

HYDROLOGY:

Stream or Body of Water	
Hydro, Pool or Reservoir	
Jurisdictional Stream	
Buffer Zone 1	
Buffer Zone 2	
Flow Arrow	
Disappearing Stream	
Spring	
Wetland	
Proposed Lateral, Tail, Head Ditch	
False Sump	

RAILROADS:

Standard Gauge	
RR Signal Milepost	
Switch	
RR Abandoned	
RR Dismantled	

RIGHT OF WAY & PROJECT CONTROL:

Primary Horiz Control Point	
Primary Horiz and Vert Control Point	
Secondary Horiz and Vert Control Point	
Vertical Benchmark	
Existing Right of Way Monument	
Proposed Right of Way Monument (Rebar and Cap)	
Proposed Right of Way Monument (Concrete)	
Existing Permanent Easement Monument	
Proposed Permanent Easement Monument (Rebar and Cap)	
Existing C/A Monument	
Proposed C/A Monument (Rebar and Cap)	
Proposed C/A Monument (Concrete)	
Existing Right of Way Line	
Proposed Right of Way Line	
Existing Control of Access Line	
Proposed Control of Access Line	
Proposed ROW and CA Line	
Existing Easement Line	
Proposed Temporary Construction Easement	
Proposed Temporary Drainage Easement	
Proposed Permanent Drainage Easement	
Proposed Permanent Drainage/Utility Easement	
Proposed Permanent Utility Easement	
Proposed Temporary Utility Easement	
Proposed Aerial Utility Easement	

ROADS AND RELATED FEATURES:

Existing Edge of Pavement	
Existing Curb	
Proposed Slope Stakes Cut	
Proposed Slope Stakes Fill	
Proposed Curb Ramp	
Existing Metal Guardrail	
Proposed Guardrail	
Existing Cable Guiderail	
Proposed Cable Guiderail	
Equality Symbol	
Pavement Removal	

VEGETATION:

Single Tree	
Single Shrub	
Hedge	

Woods Line	
Orchard	
Vineyard	

EXISTING STRUCTURES:

MAJOR:	
Bridge, Tunnel or Box Culvert	
Bridge Wing Wall, Head Wall and End Wall	
MINOR:	
Head and End Wall	
Pipe Culvert	
Footbridge	
Drainage Box: Catch Basin, DI or JB	
Paved Ditch Gutter	
Storm Sewer Manhole	
Storm Sewer	

UTILITIES:

\* SUE - Subsurface Utility Engineering  
LOS - Level of Service - A, B, C or D (Accuracy)

POWER:	
Existing Power Pole	
Proposed Power Pole	
Existing Joint Use Pole	
Proposed Joint Use Pole	
Power Manhole	
Power Line Tower	
Power Transformer	
U/G Power Cable Hand Hole	
H-Frame Pole	
U/G Power Line Test Hole (SUE - LOS A)*	
U/G Power Line (SUE - LOS B)*	
U/G Power Line (SUE - LOS C)*	
U/G Power Line (SUE - LOS D)*	

TELEPHONE:

Existing Telephone Pole	
Proposed Telephone Pole	
Telephone Manhole	
Telephone Pedestal	
Telephone Cell Tower	
U/G Telephone Cable Hand Hole	
U/G Telephone Test Hole (SUE - LOS A)*	
U/G Telephone Cable (SUE - LOS B)*	
U/G Telephone Cable (SUE - LOS C)*	
U/G Telephone Cable (SUE - LOS D)*	
U/G Telephone Conduit (SUE - LOS B)*	
U/G Telephone Conduit (SUE - LOS C)*	
U/G Telephone Conduit (SUE - LOS D)*	
U/G Fiber Optics Cable (SUE - LOS B)*	
U/G Fiber Optics Cable (SUE - LOS C)*	
U/G Fiber Optics Cable (SUE - LOS D)*	

WATER:

Water Manhole	
Water Meter	
Water Valve	
Water Hydrant	
U/G Water Line Test Hole (SUE - LOS A)*	
U/G Water Line (SUE - LOS B)*	
U/G Water Line (SUE - LOS C)*	
U/G Water Line (SUE - LOS D)*	
Above Ground Water Line	

TV:

TV Pedestal	
TV Tower	
U/G TV Cable Hand Hole	
U/G TV Test Hole (SUE - LOS A)*	
U/G TV Cable (SUE - LOS B)*	
U/G TV Cable (SUE - LOS C)*	
U/G TV Cable (SUE - LOS D)*	
U/G Fiber Optic Cable (SUE - LOS B)*	
U/G Fiber Optic Cable (SUE - LOS C)*	
U/G Fiber Optic Cable (SUE - LOS D)*	

GAS:

Gas Valve	
Gas Meter	
U/G Gas Line Test Hole (SUE - LOS A)*	
U/G Gas Line (SUE - LOS B)*	
U/G Gas Line (SUE - LOS C)*	
U/G Gas Line (SUE - LOS D)*	
Above Ground Gas Line	

SANITARY SEWER:

Sanitary Sewer Manhole	
Sanitary Sewer Cleanout	
U/G Sanitary Sewer Line	
Above Ground Sanitary Sewer	
SS Force Main Line Test Hole (SUE - LOS A)*	
SS Force Main Line (SUE - LOS B)*	
SS Force Main Line (SUE - LOS C)*	
SS Force Main Line (SUE - LOS D)*	

MISCELLANEOUS:

Utility Pole	
Utility Pole with Base	
Utility Located Object	
Utility Traffic Signal Box	
Utility Unknown U/G Line (SUE - LOS B)*	
U/G Tank; Water, Gas, Oil	
Underground Storage Tank, Approx. Loc.	
A/G Tank; Water, Gas, Oil	
Geoenvironmental Boring	
Abandoned According to Utility Records	
End of Information	

NOTES:

1. OVERHEAD COMMUNICATIONS TO BE RAISED TO AVOID CLEARANCE ISSUES WITH ACCESS ROAD TRAFFIC. A MINIMUM OF 18' CLEARANCE ABOVE THE ROAD UNDER MAX SAG CONDITIONS MUST BE MET.
2. DUKE ENERGY FIBER WILL BE LOWERED 1.5' AT THE 30" RCP CROSSING TO MAINTAIN 12" CLEARANCE. DUKE ENERGY FIBER WILL BE RAISED TO A 3-4' DEPTH AT THE (2) PROPOSED FORCE MAIN SEWER CROSSINGS TO MAINTAIN 18" CLEARANCE.
3. BRUNSWICK COUNTY CONTRACTOR WILL INSTALL THE NEW 16" WATER LINE AND A ELEVATED WATER TANK. NCDOT CONTRACTOR SHALL COORDINATE WITH BRUNSWICK COUNTY DURING CONSTRUCTION. BRUNSWICK COUNTY WILL PROVIDE THE SCHEDULE AND DURATION FOR THE 16" WATER LINE AND THE ELEVATED WATER TANK.

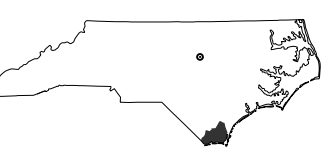
MATCH LINE -L1- STA 16+00.00 SEE SHEET 5



HE-0016

00 04

NORTH CAROLINA DEPARTMENT OF TRANSPORTATION BRUNSWICK COUNTY



ROADWAY DESIGN UNIT

UTILITY PROJECT MANAGER:

PANKIL PATEL

UTILITY COORDINATOR:

TREVER REEVES

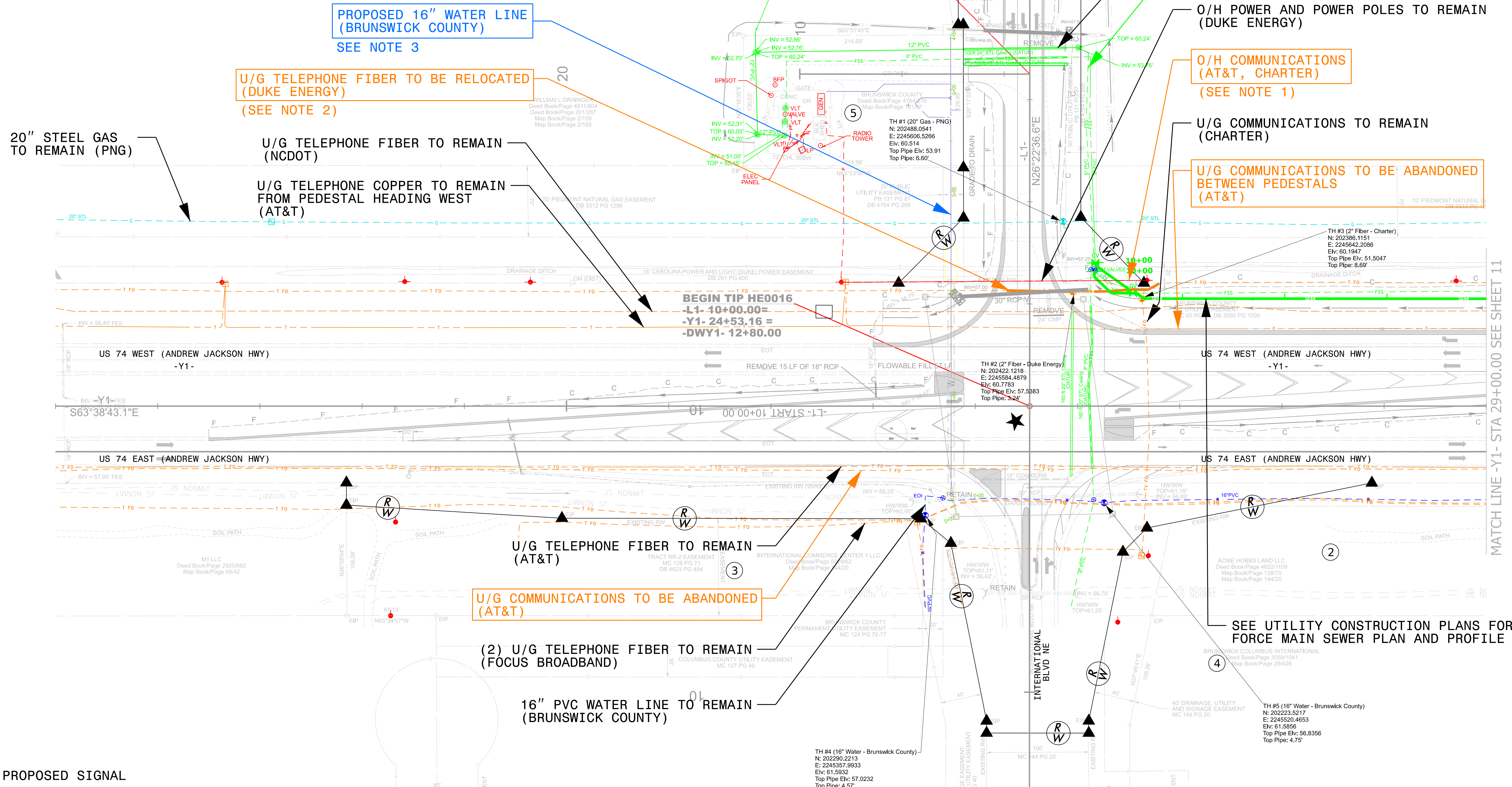
PREPARED BY



WE Design your Tomorrow ...

1223 Jones Franklin Road  
Raleigh, NC 27606  
(919) 851-8077

NC License F-0377



PROPOSED 16" WATER LINE (BRUNSWICK COUNTY) SEE NOTE 3

U/G TELEPHONE FIBER TO BE RELOCATED (DUKE ENERGY) (SEE NOTE 2)

20" STEEL GAS TO REMAIN (PNG)

U/G TELEPHONE FIBER TO REMAIN (NCDOT)

U/G TELEPHONE COPPER TO REMAIN FROM PEDESTAL HEADING WEST (AT&T)

O/H COMMUNICATIONS (AT&T, CHARTER) (SEE NOTE 1)

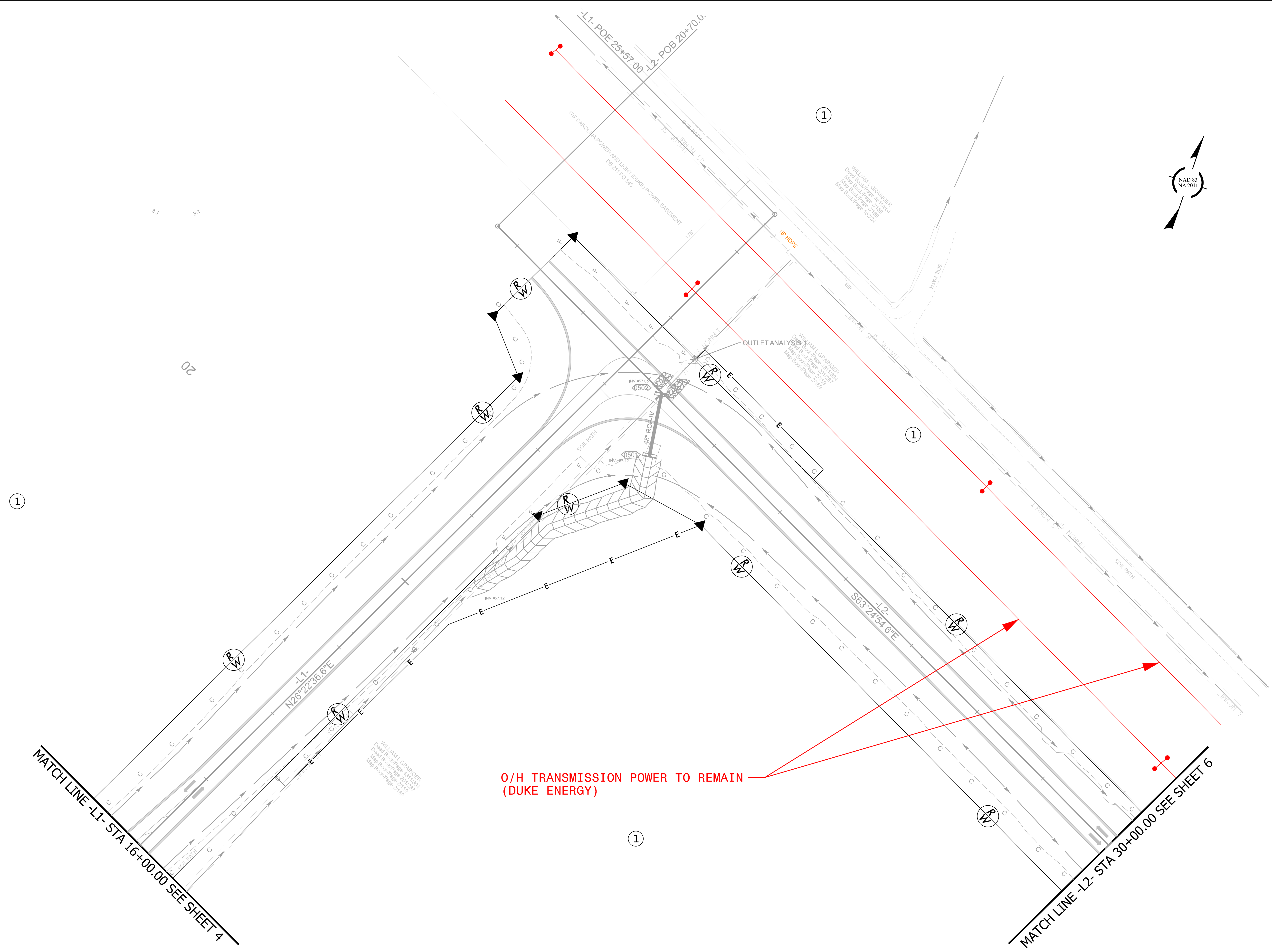
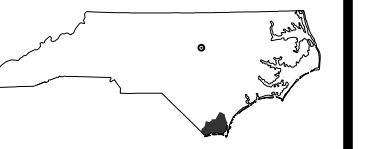
U/G COMMUNICATIONS TO REMAIN (CHARTER)

U/G COMMUNICATIONS TO BE ABANDONED BETWEEN PEDESTALS (AT&T)

BEGIN TIP HE0016 -L1- 10+00.00= -Y1- 24+53.16 = -DWY1- 12+80.00

SEE UTILITY CONSTRUCTION PLANS FOR FORCE MAIN SEWER PLAN AND PROFILE

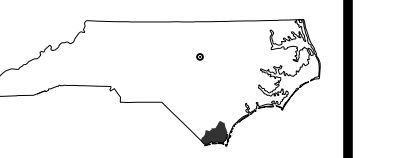
★ PROPOSED SIGNAL



O/H TRANSMISSION POWER TO REMAIN  
(DUKE ENERGY)

MATCH LINE -L1- STA 16+00.00 SEE SHEET 4

MATCH LINE -L2- STA 30+00.00 SEE SHEET 6



O/H TRANSMISSION POWER TO REMAIN  
(DUKE ENERGY)

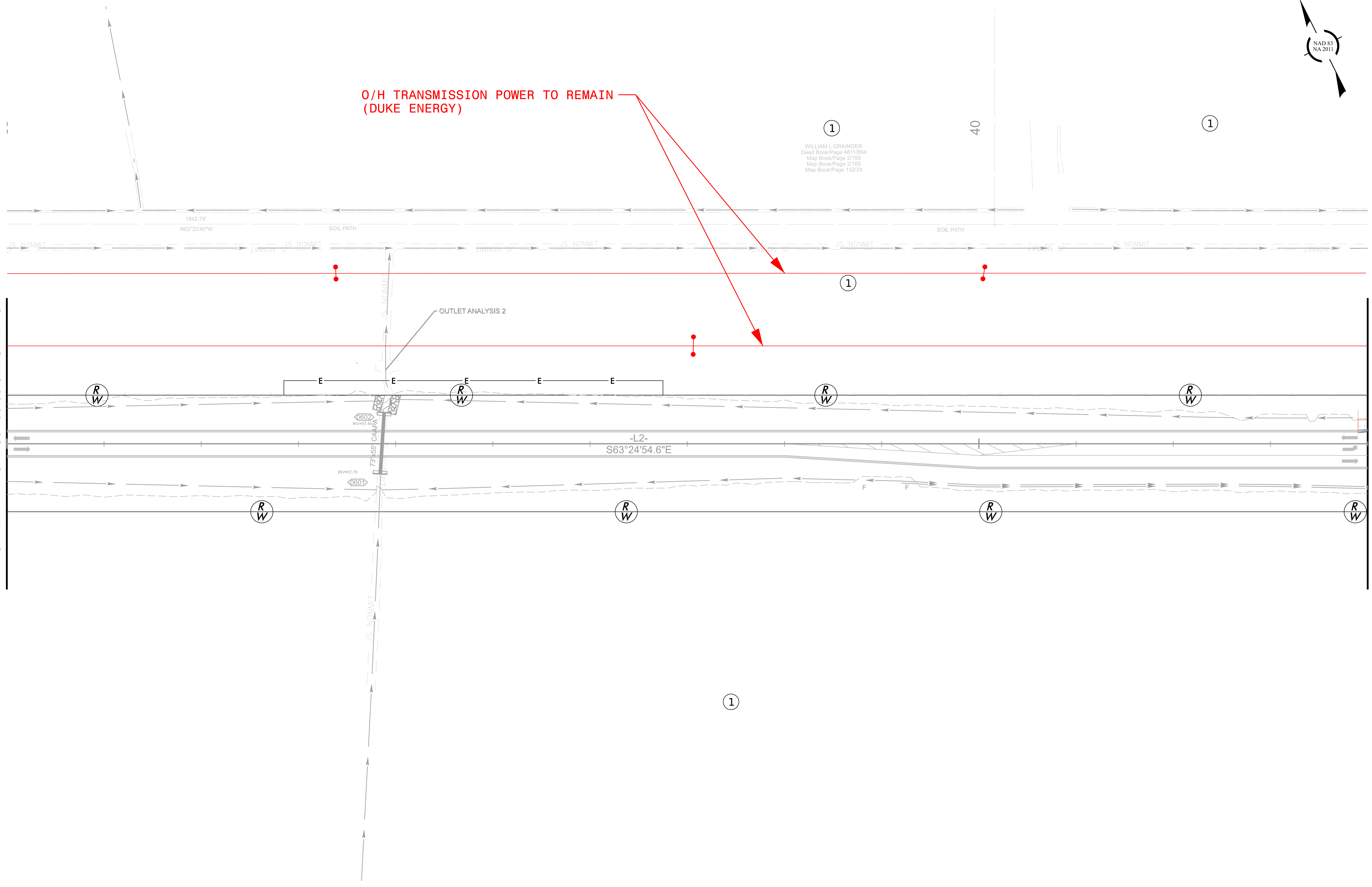
①  
WILLIAM L GRAINGER  
Deed Book/Page 4811/804  
Map Book/Page 2/159  
Map Book/Page 2/159  
Map Book/Page 152/24

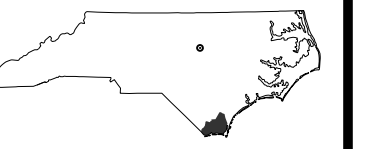
40

①

MATCH LINE -L2- STA 30+00.00 SEE SHEET 5

MATCH LINE -L2- STA 44+00.00 SEE SHEET 7





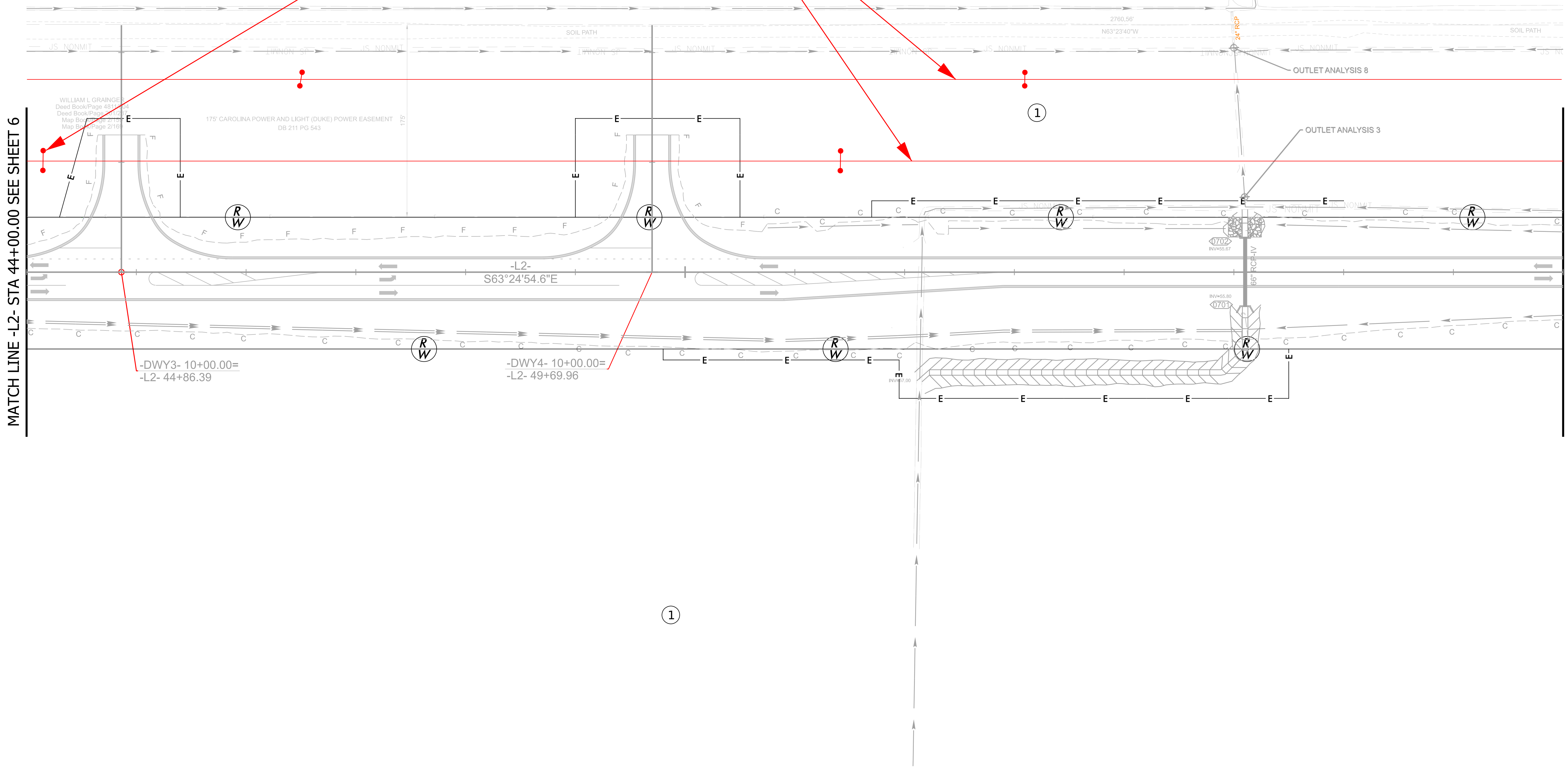
1

O/H TRANSMISSION POWER TO REMAIN  
(DUKE ENERGY)

TRANSMISSION POLE TO REMAIN  
(DUKE ENERGY)

50

WILLIAM L. GRAINGER  
Deed Book/Page 4811/804  
Map Book/Page 2159  
Map Book/Page 2169  
Map Book/Page 152/24

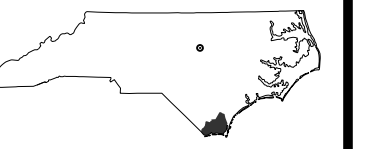


MATCH LINE -L2- STA 44+00.00 SEE SHEET 6

MATCH LINE -L2- STA 58+00.00 SEE SHEET 8

PREPARED BY  
**WETHERILL**  
ENGINEERING

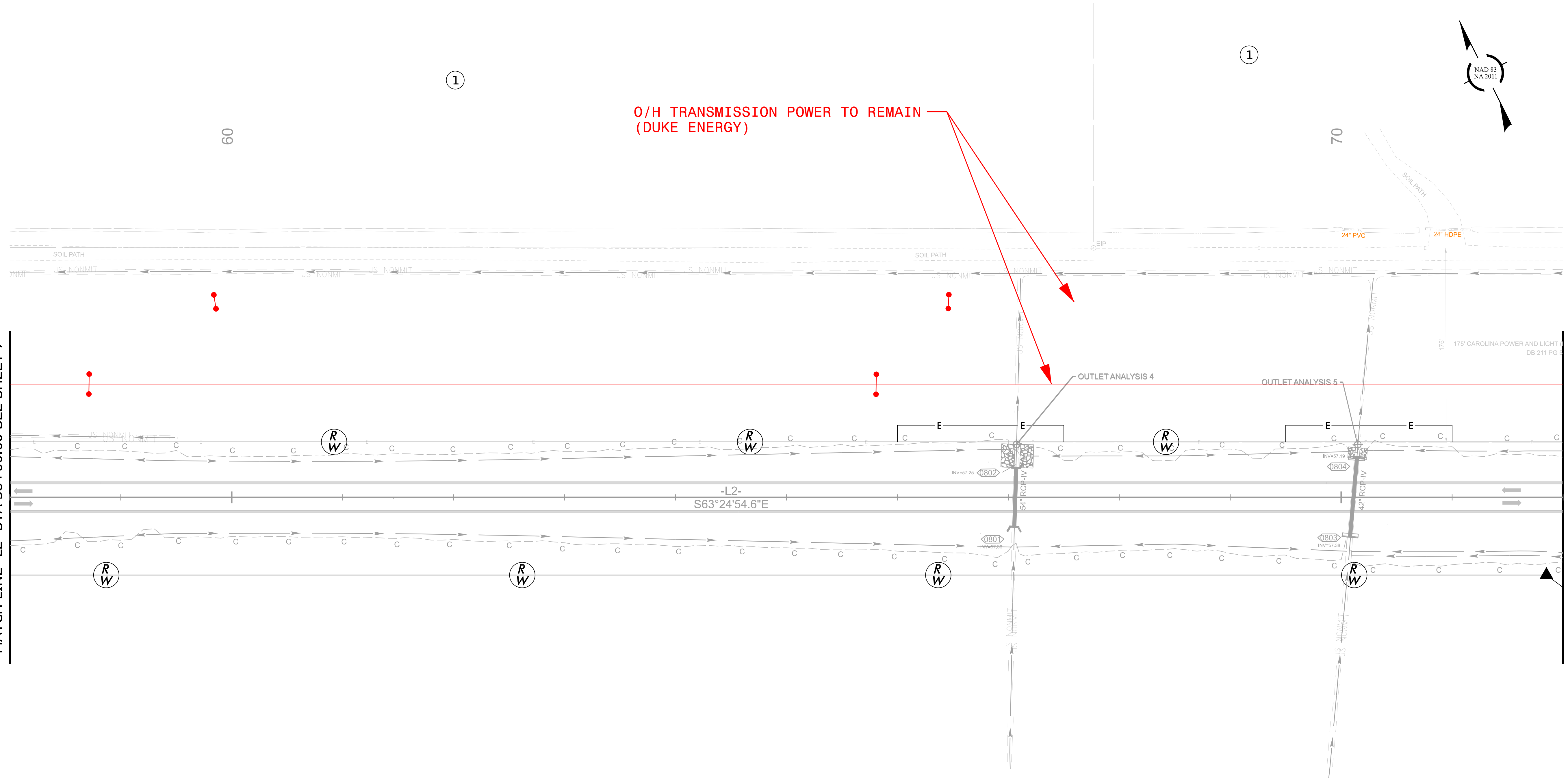
WE Design your Tomorrow ...  
1223 Jones Franklin Road  
Raleigh, NC 27606  
(919) 851-8077  
NC License F-0377



O/H TRANSMISSION POWER TO REMAIN  
(DUKE ENERGY)

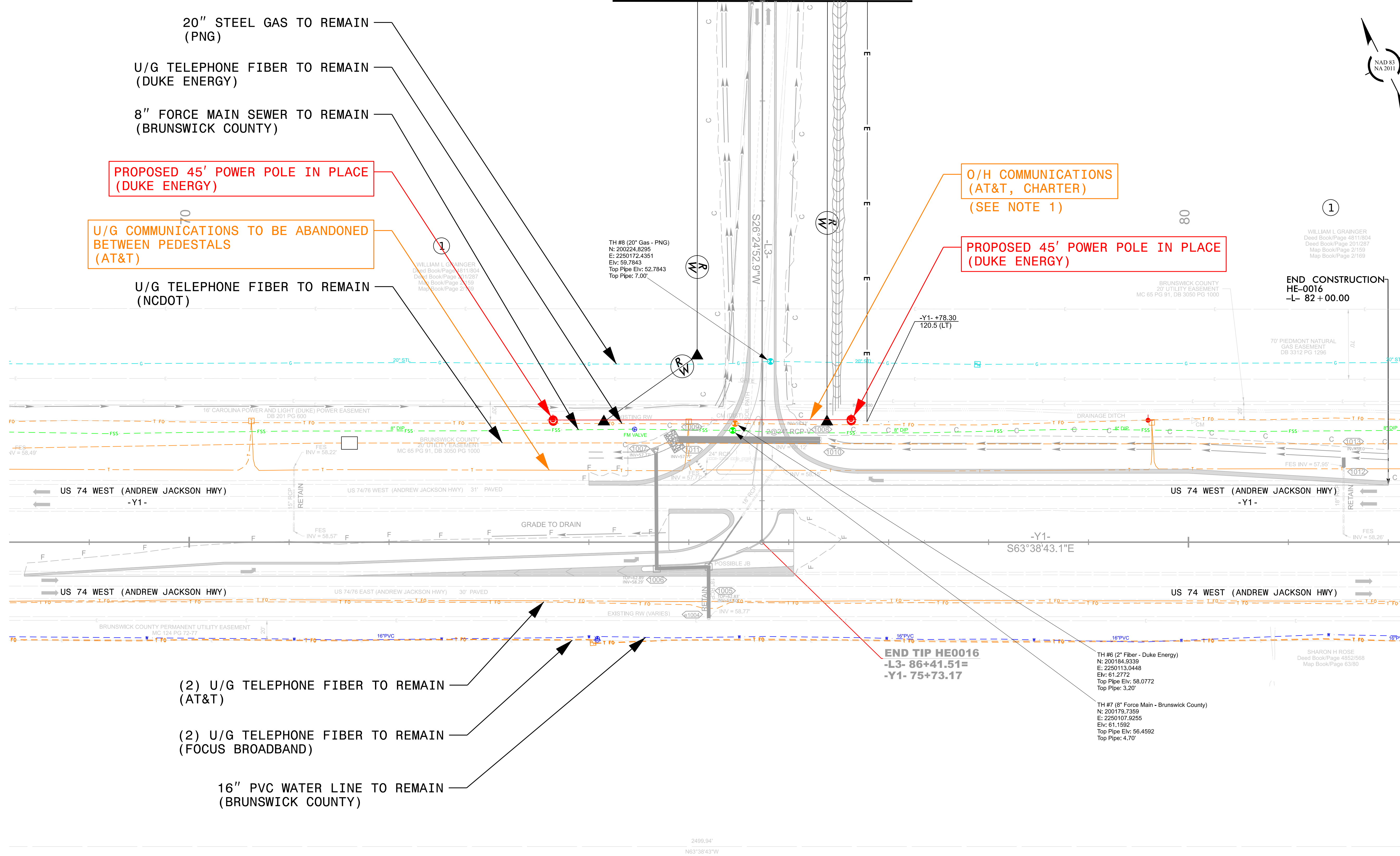
MATCH LINE -L2- STA 58+00.00 SEE SHEET 7

MATCH LINE -L2- STA 72+00.00 SEE SHEET 9





MATCH LINE -L3- STA 81+00.00 SEE SHEET 9



**HE-0016**

UD 10

NORTH CAROLINA  
DEPARTMENT OF TRANSPORTATION  
BRUNSWICK COUNTY

ROADWAY DESIGN UNIT

UTILITY PROJECT MANAGER:  
PANKIL PATEL

UTILITY COORDINATOR:  
TREVOR REEVES

---

PREPARED BY  
**WETHERILL ENGINEERING**

WE Design your Tomorrow ...

1223 Jones Franklin Road  
Raleigh, NC 27606  
(919) 851-8077

NC License F-0377

- NOTES:**
- OVERHEAD COMMUNICATIONS TO BE RAISED TO AVOID CLEARANCE ISSUES WITH ACCESS ROAD TRAFFIC. A MINIMUM OF 18' CLEARANCE ABOVE THE ROAD UNDER MAX SAG CONDITIONS MUST BE MET.

