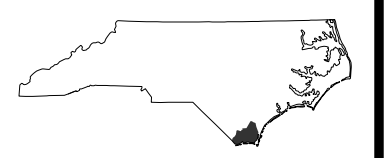


NOTE: UTILIZE COIR FIBER MATTING ADJACENT TO WETLANDS/JURISDICTIONAL AREAS, AND AS DIRECTED BY THE ENGINEER.

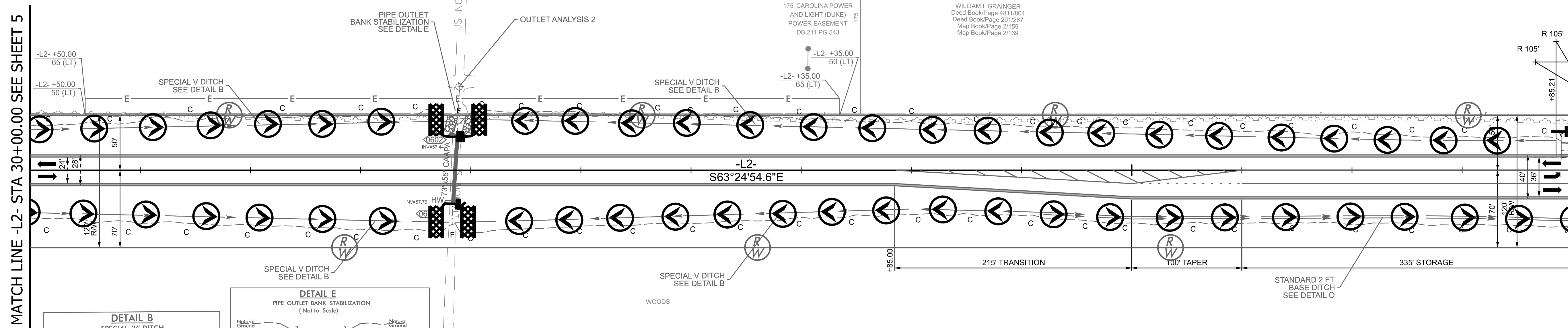
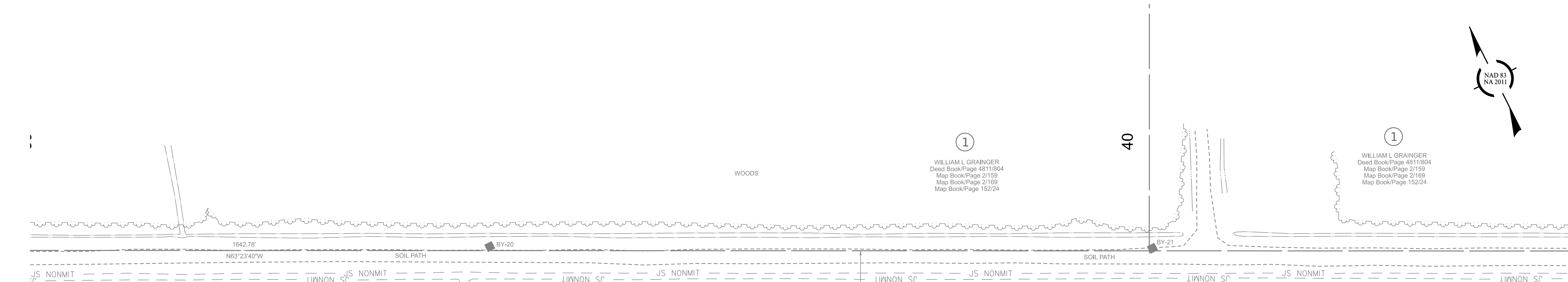


ROADWAY DESIGN UNIT ROADWAY DESIGN ENGINEER

HYDRAULICS ENGINEER

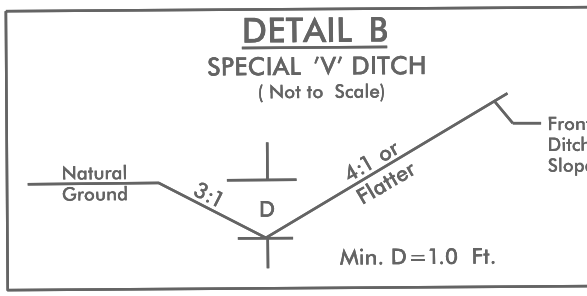
PREPARED BY

WE Design your Tomorrow ... 1223 Jones Franklin Road Raleigh, NC 27606 (919) 851-8077 NC License F-0377

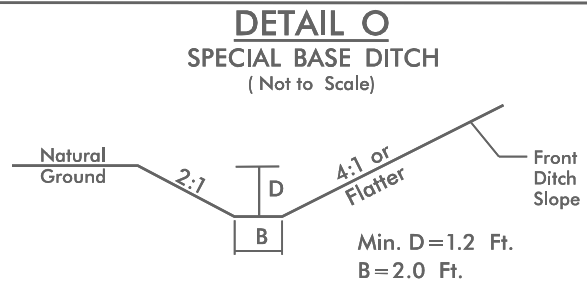
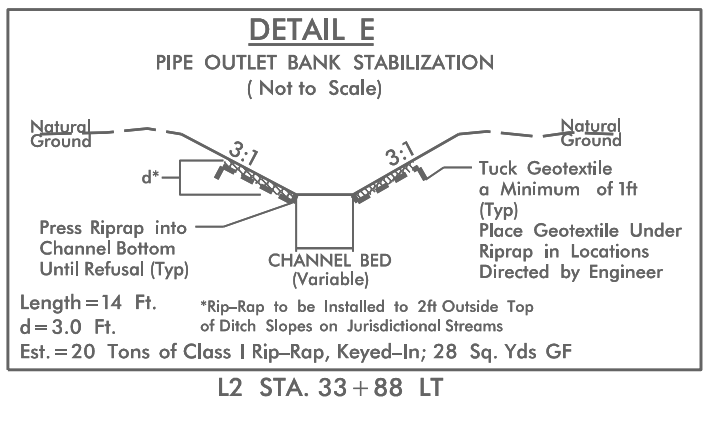


MATCH LINE -L2- STA 30+00.00 SEE SHEET 5

MATCH LINE -L2- STA 44+00.00 SEE SHEET 7



FROM L2 STA. 23+25 TO STA. 33+80 RT
FROM L2 STA. 23+25 TO STA. 33+85 LT
FROM L2 STA. 33+86 TO STA. 39+20 RT
FROM L2 STA. 34+00 TO STA. 43+85 LT



FROM L2 STA. 39+20 TO STA. 55+07 RT

1 WILLIAM L GRAINGER Deed Book/Page 4811/804 Deed Book/Page 201/287 Map Book/Page 2/159 Map Book/Page 2/169