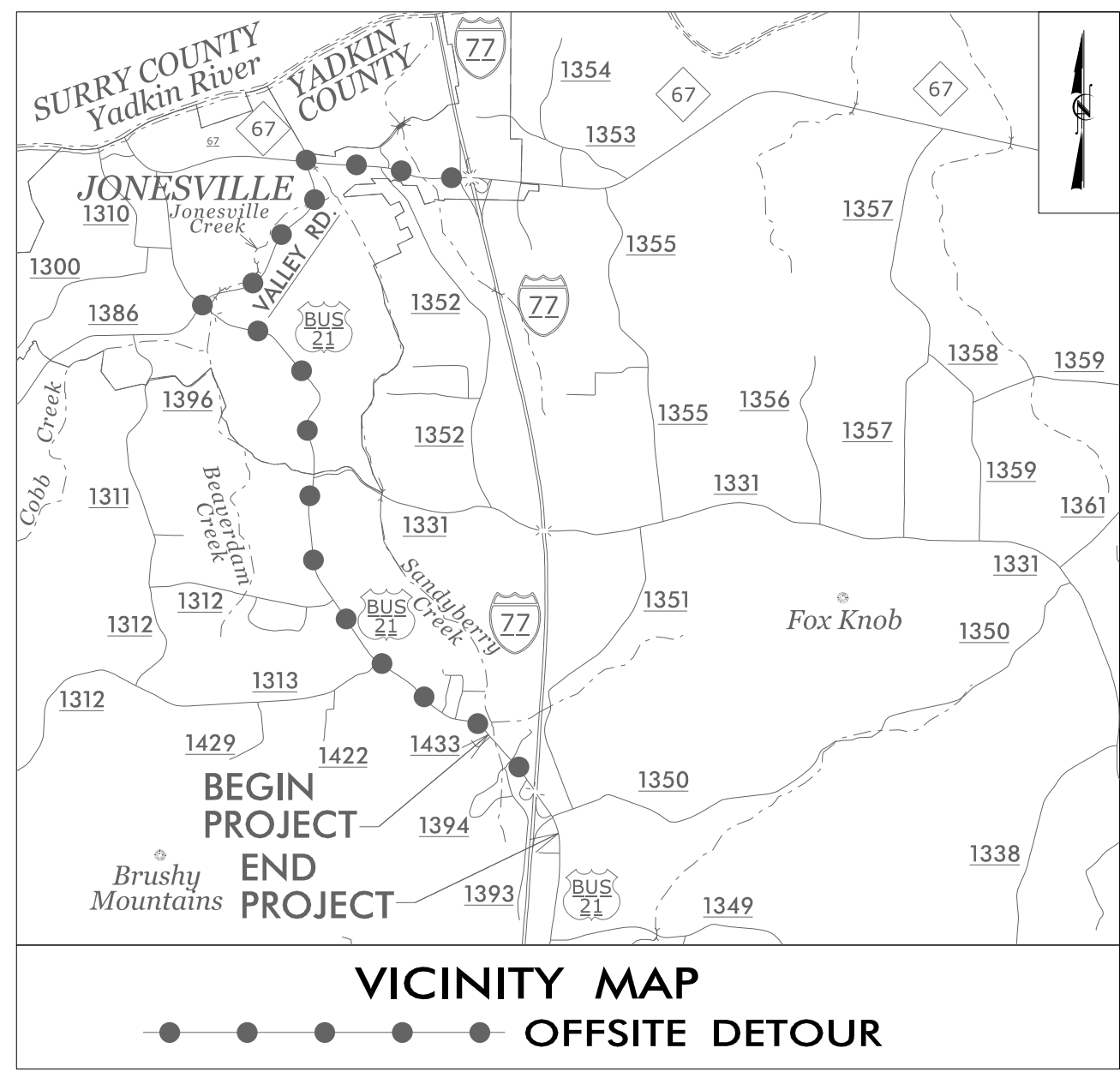


**TIP PROJECT: B-5833**



FINAL PLANS

STATE OF NORTH CAROLINA  
DIVISION OF HIGHWAYS

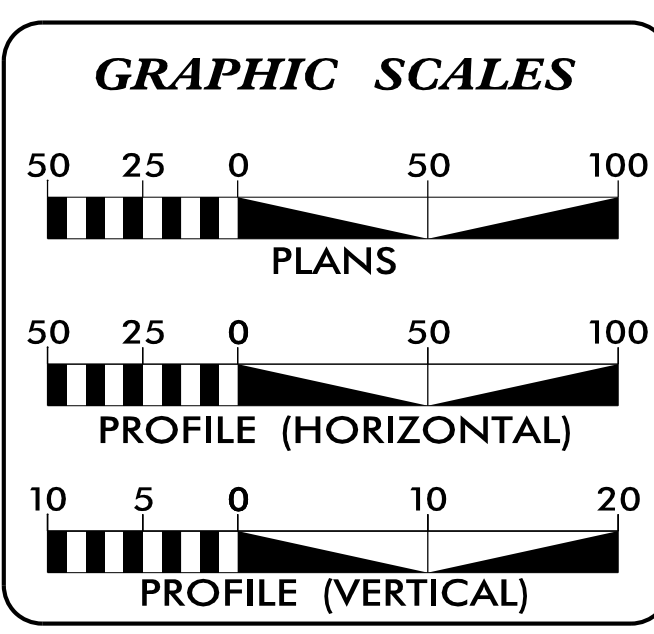
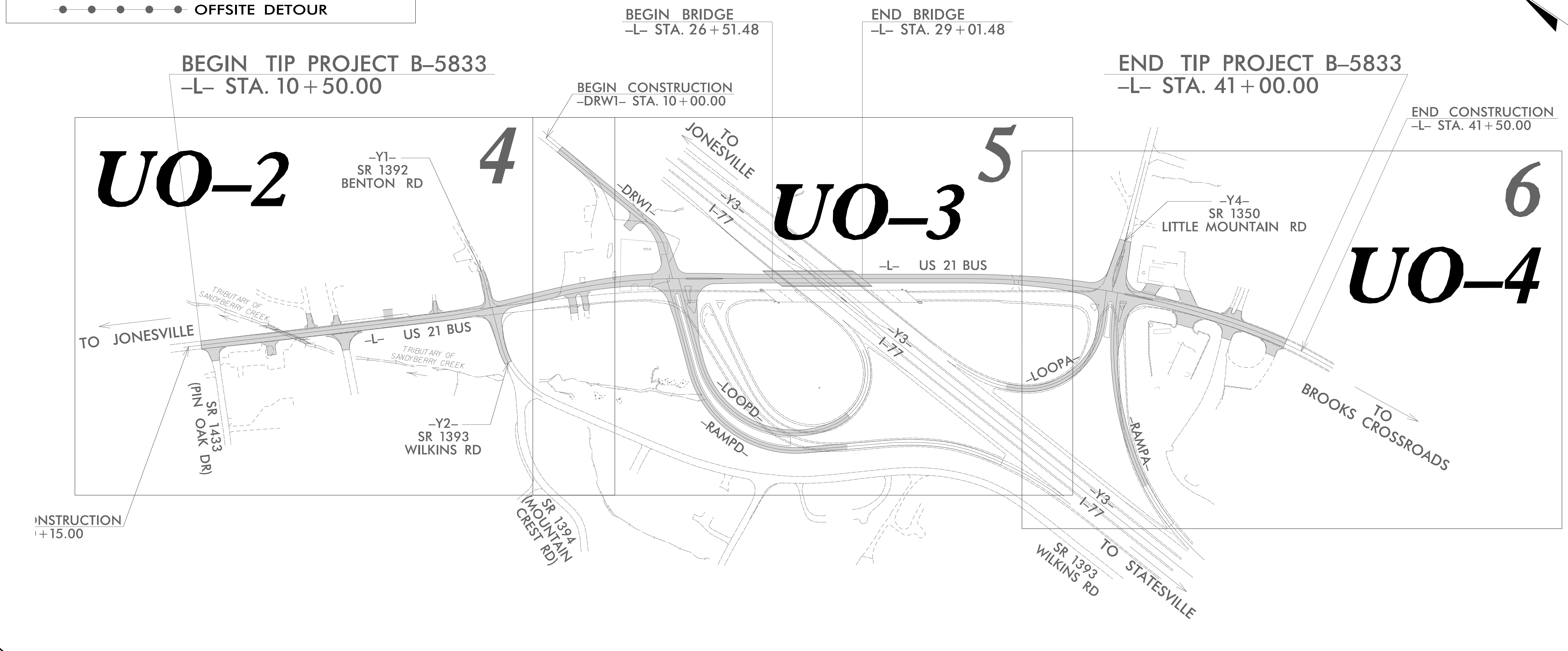
**UTILITIES BY OTHERS PLANS  
YADKIN COUNTY**

**LOCATION: REPLACE BRIDGE NO. 29 OVER I-77 ON US 21 BUS**

**TYPE OF WORK: POWER DISTRIBUTION & TELECOM RELOCATIONS**

T.I.P. NO.	SHEET NO.
B-5833	UO-1

NOTE:  
ALL UTILITY WORK SHOWN ON THIS SHEET IS DONE BY OTHERS.  
NO PAYMENT WILL BE MADE TO THE CONTRACTOR FOR UTILITY WORK SHOWN ON THIS SHEET.



**INDEX OF SHEETS**

SHEET NO.	DESCRIPTION
UO-1	TITLE SHEET
UO-2 THRU UO-4	UBO PLAN SHEETS

**UTILITY OWNERS WITH CONFLICTS**

(A) POWER DISTRIBUTION - DUKE ENERGY  
(B) TELECOM - CHARTER/SPECTRUM  
(C) TELECOM - LUMEN  
(D) TELECOM - ZIRRUS

PREPARED IN THE OFFICE OF:

**HINDE ENGINEERING**

License No. C-2639  
401 Harrison Oaks Blvd., Suite 220 Cary, NC 27513  
(919) 653-0001

Clint L. Stevens, PE UTILITY COORDINATION PROJECT MANAGER  
Kevin S. Hinde, PE PROJECT UTILITY COORDINATOR  
James N. Arnold PROJECT UTILITY DESIGNER

**DIVISION OF HIGHWAYS  
DIVISION II**

801 STATESVILLE RD.  
NORTH WILKESBORO, NC 28659  
PHONE (336) 983-5101  
FAX (336) 667-4549

David Stuts, PE DIVISION PROJECT ENGINEER  
Daniel R. Adams, PE PROJECT TEAM LEAD  
Brandon Greer DIVISION UTILITY ENGINEER

I:\SEP-2025\1314\Servers\Projects\2018\2018802.00\_TCS\_B-5833\Design\Utilities\Engineering\UBO\Proj\B-5833\_Ut\_1\_tsh\_UO1\_psh.dgn

### UTILITIES BY OTHERS

**NOTE:**  
 ALL UTILITY WORK SHOWN ON THIS SHEET WILL BE DONE BY OTHERS. NO PAYMENT WILL BE MADE TO THE CONTRACTOR FOR UTILITY WORK SHOWN ON THIS SHEET.



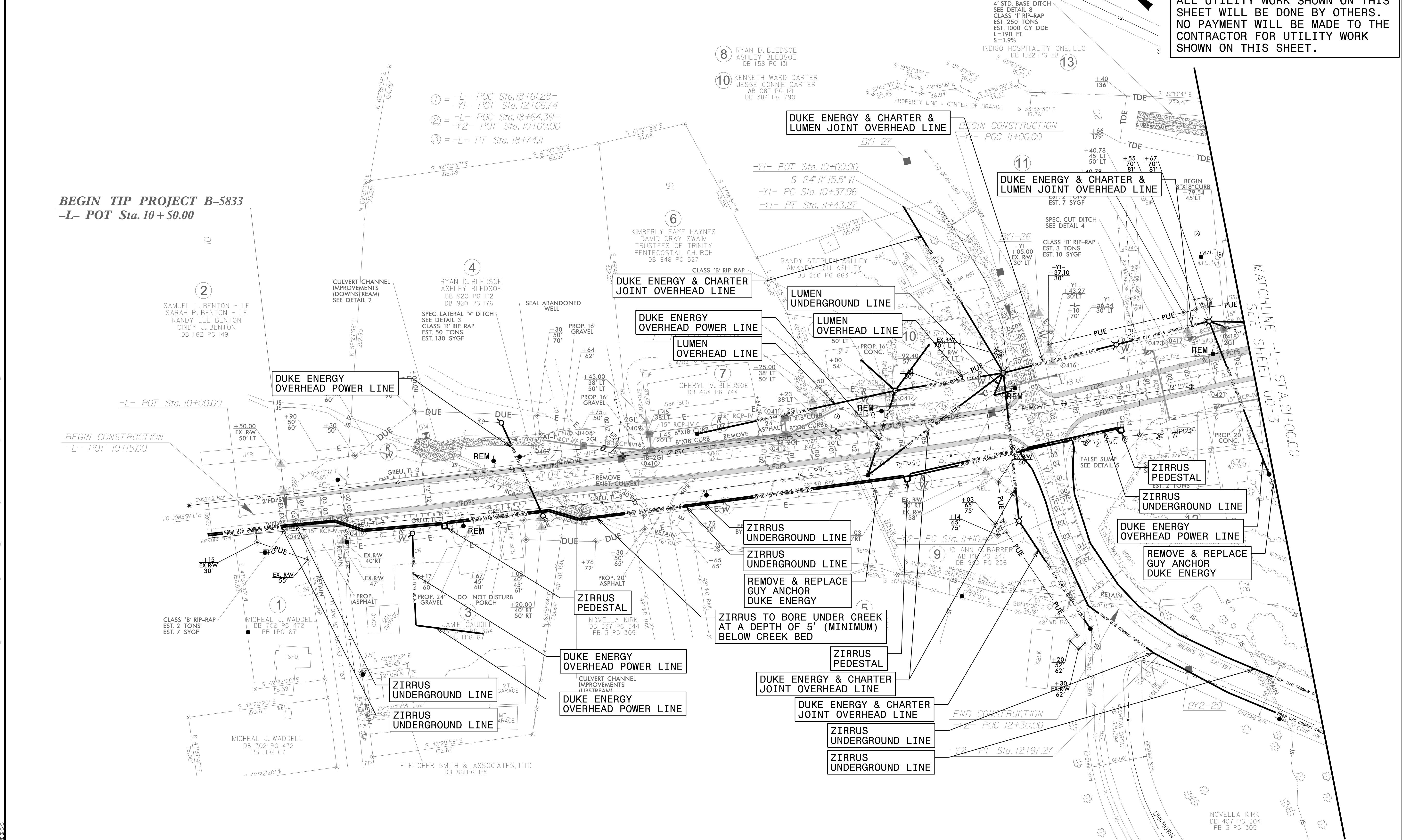
**BEGIN TIP PROJECT B-5833**  
 -L- POT Sta. 10+50.00

BEGIN CONSTRUCTION  
 -L- POT 10+15.00

END CONSTRUCTION  
 -Y2- POC 12+30.00

MATCHLINE -L- STA 21+00.00  
 SEE SHEET U0-3

L:\SEP-2025\1316\PROJECTS\2018\A2018802.00\_TGS-B-5833\Design\Utilities\Engineering\UBO\Proje\B-5833\_Ut\_rdy04\_U002\_psh.dgn  
 L:\SEP-2025\1316\PROJECTS\2018\A2018802.00\_TGS-B-5833\Design\Utilities\Engineering\UBO\Proje\B-5833\_Ut\_rdy04\_U002\_psh.dgn  
 L:\SEP-2025\1316\PROJECTS\2018\A2018802.00\_TGS-B-5833\Design\Utilities\Engineering\UBO\Proje\B-5833\_Ut\_rdy04\_U002\_psh.dgn



- ① = -L- POC Sta. 18+61.28 = -Y1- POT Sta. 12+06.74
- ② = -L- POC Sta. 18+64.39 = -Y2- POT Sta. 10+00.00
- ③ = -L- PT Sta. 18+74.11

- ⑧ RYAN D. BLEDSOE  
ASHLEY BLEDSOE  
DB 1158 PG 131
- ⑩ KENNETH WARD CARTER  
JESSE CONNIE CARTER  
WB OBE PG 121  
DB 384 PG 790

⑬ INDIGO HOSPITALITY ONE, LLC  
DB 1222 PG 88

④ KIMBERLY FAYE HAYNES  
DAVID GRAY SWAIM  
TRUSTEES OF TRINITY  
PENTECOSTAL CHURCH  
DB 946 PG 527

② SAMUEL L. BENTON - LE  
SARAH P. BENTON - LE  
RANDY LEE BENTON  
CINDY J. BENTON  
DB 1162 PG 149

⑦ CHERYL V. BLEDSOE  
DB 464 PG 744

③ MICHAEL J. WADDELL  
DB 702 PG 472  
PB 1PG 67

⑤ NOVELLA KIRK  
DB 237 PG 344  
PB 3 PG 305

⑨ JO ANN BARBER  
WB 149 PG 347  
DB 940 PG 256

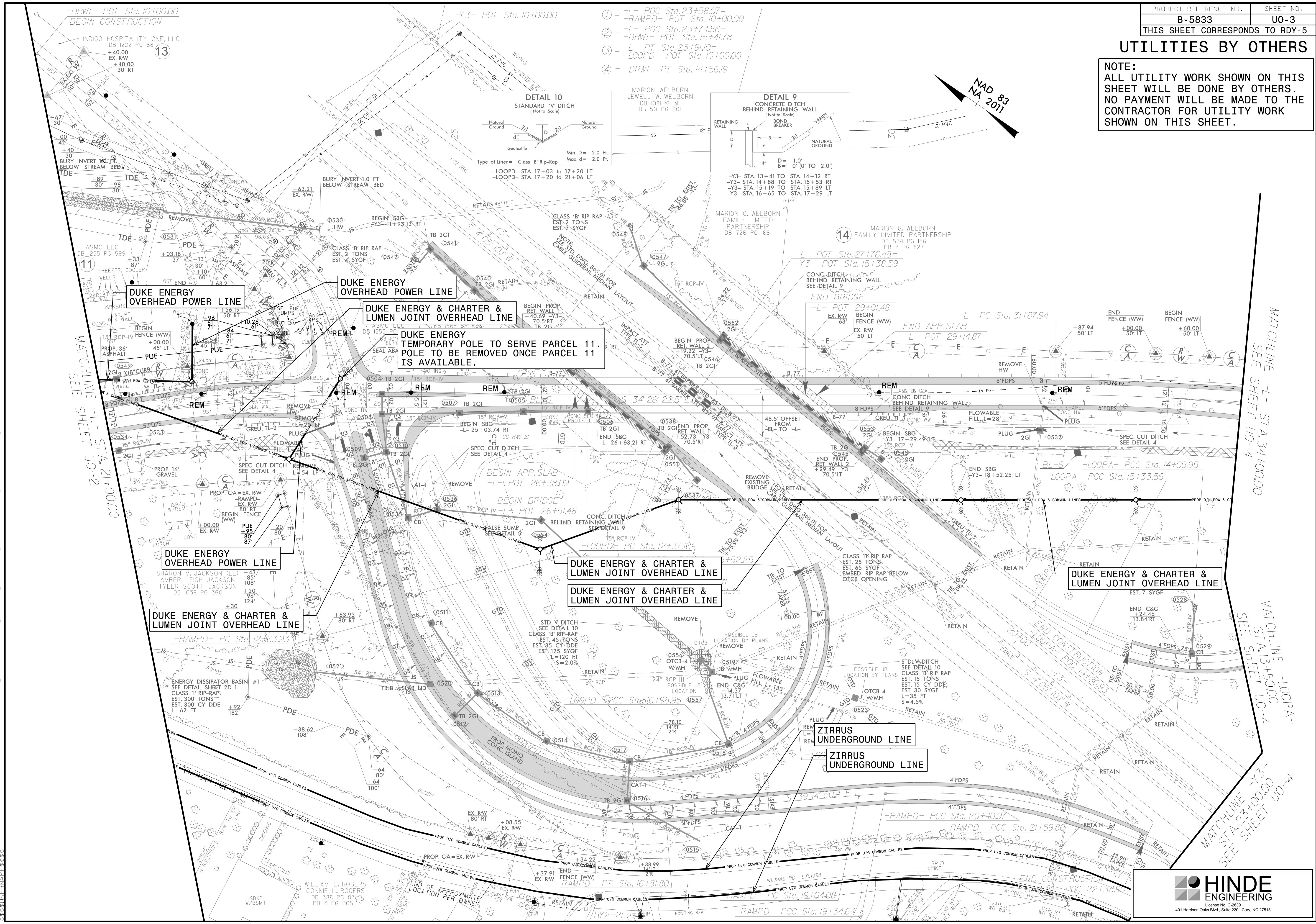
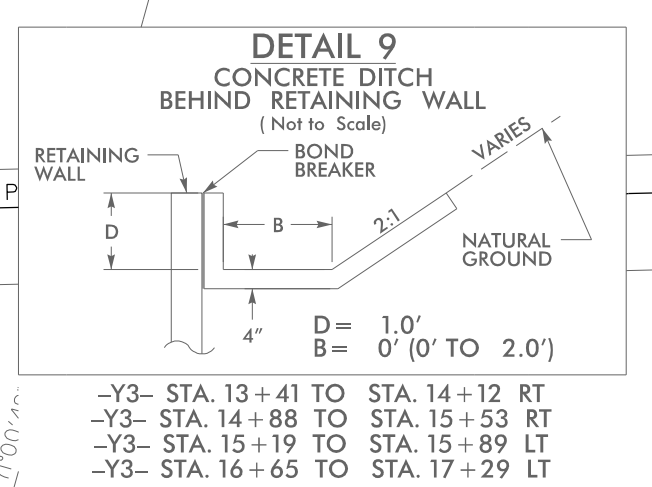
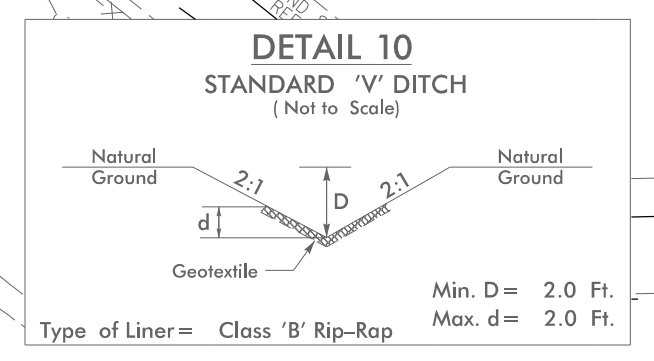
NOVELLA KIRK  
DB 407 PG 204  
PB 3 PG 305



### UTILITIES BY OTHERS

NOTE:  
ALL UTILITY WORK SHOWN ON THIS SHEET WILL BE DONE BY OTHERS. NO PAYMENT WILL BE MADE TO THE CONTRACTOR FOR UTILITY WORK SHOWN ON THIS SHEET.

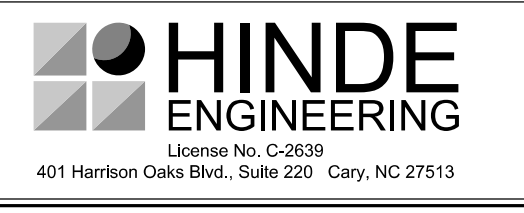
- ① = L- POC Sta.23+58.07 = -RAMPD- POT Sta.10+00.00
- ② = L- POC Sta.23+74.56 = -DRWI- POT Sta.15+41.78
- ③ = L- PT Sta.23+91.0 = -LOOPD- POT Sta.10+00.00
- ④ = -DRWI- PT Sta.14+56.19



MATCHLINE -L- STA. 21+00.00  
SEE SHEET U0-2

MATCHLINE -L- STA. 34+00.00  
SEE SHEET U0-4

MATCHLINE -LOOPA- STA. 13+50.00  
SEE SHEET U0-4

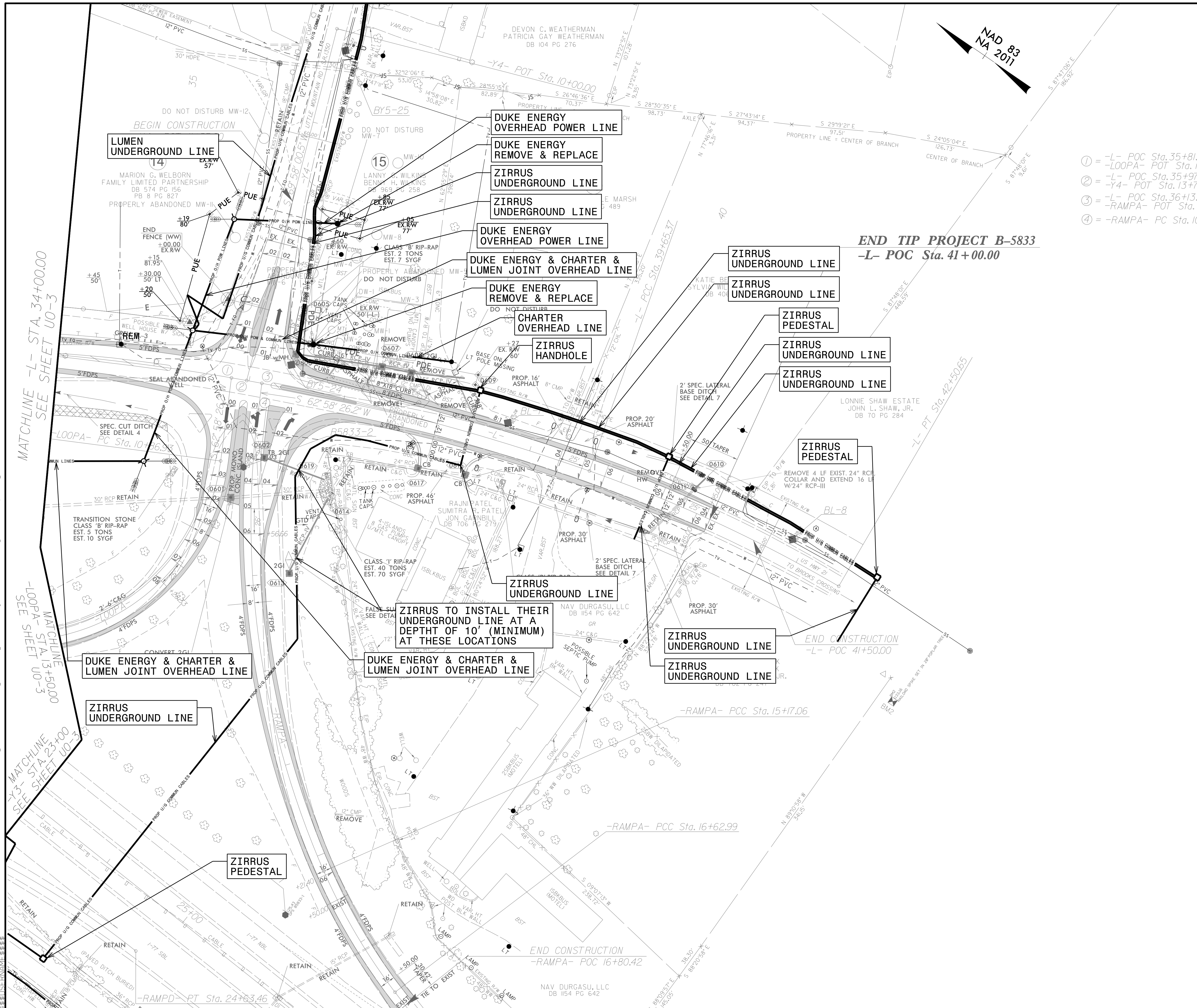


UBO PLANS ARE FOR INFORMATION ONLY AND ARE NOT TO BE USED FOR CONSTRUCTION. ALL PROPOSED RELOCATION INFORMATION SHOWN ON THE UBO PLANS WAS PROVIDED BY 3RD PARTIES. HINDE ENGINEERING, INC. ASSUMES NO RESPONSIBILITY OR LIABILITY FOR THE ACCURACY OR VALIDITY OF 3RD PARTY INFORMATION PROVIDED.

### UTILITIES BY OTHERS

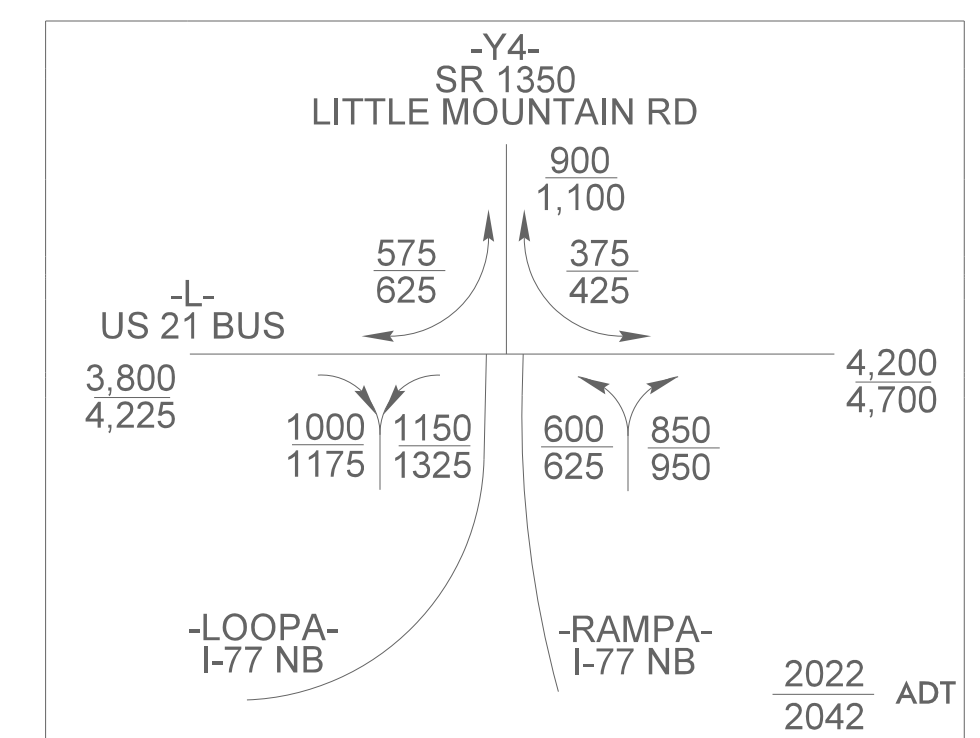
NOTE:  
ALL UTILITY WORK SHOWN ON THIS SHEET WILL BE DONE BY OTHERS. NO PAYMENT WILL BE MADE TO THE CONTRACTOR FOR UTILITY WORK SHOWN ON THIS SHEET.

- ① = -L- POC Sta. 35+81.31=
- LOOPA- POT Sta. 10+00.00
- ② = -L- POC Sta. 35+97.31=
- Y4- POT Sta. 13+76.70
- ③ = -L- POC Sta. 36+13.35=
- RAMPA- POT Sta. 10+00.00
- ④ = -RAMPA- PC Sta. 10+29.17



END TIP PROJECT B-5833  
-L- POC Sta. 41+00.00

END CONSTRUCTION  
-L- POC 41+50.00



L:\SEP-2025\1320\PROJECTS\2018\A2018802\00\_TGS-B-5833\Design\Utilities\Engineering\UBO\ProJ\B-5833\_Ut\_rdy06\_U004\_psh.dgn

UBO PLANS ARE FOR INFORMATION ONLY AND ARE NOT TO BE USED FOR CONSTRUCTION. ALL PROPOSED RELOCATION INFORMATION SHOWN ON THE UBO PLANS WAS PROVIDED BY 3RD PARTIES. HINDE ENGINEERING, INC. ASSUMES NO RESPONSIBILITY OR LIABILITY FOR THE ACCURACY OR VALIDITY OF 3RD PARTY INFORMATION PROVIDED.