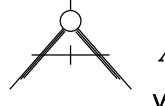
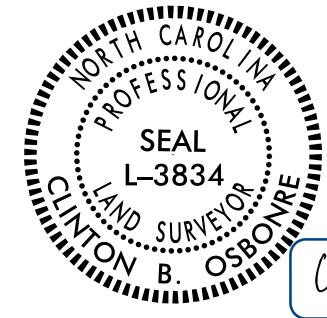


PROJECT REFERENCE NO.	SHEET NO.
B-5833	RW04
<b>Location and Surveys</b>	
 <b>ALLIED ASSOCIATES, P.A.</b> 4720 KESTER MILL ROAD WINSTON SALEM, NC 27103 WWW.ALLIEDAPA.COM C-2198 (336)765-2377	
PROJECT SURVEYOR	
 SEAL L-3834 CLINTON B. OSBORNE 10/5/2021 Documented by: <i>Clinton Osborne</i> 048F68085F6449B	
DOCUMENT NOT CONSIDERED FINAL UNLESS ALL SIGNATURES COMPLETED	

-L-

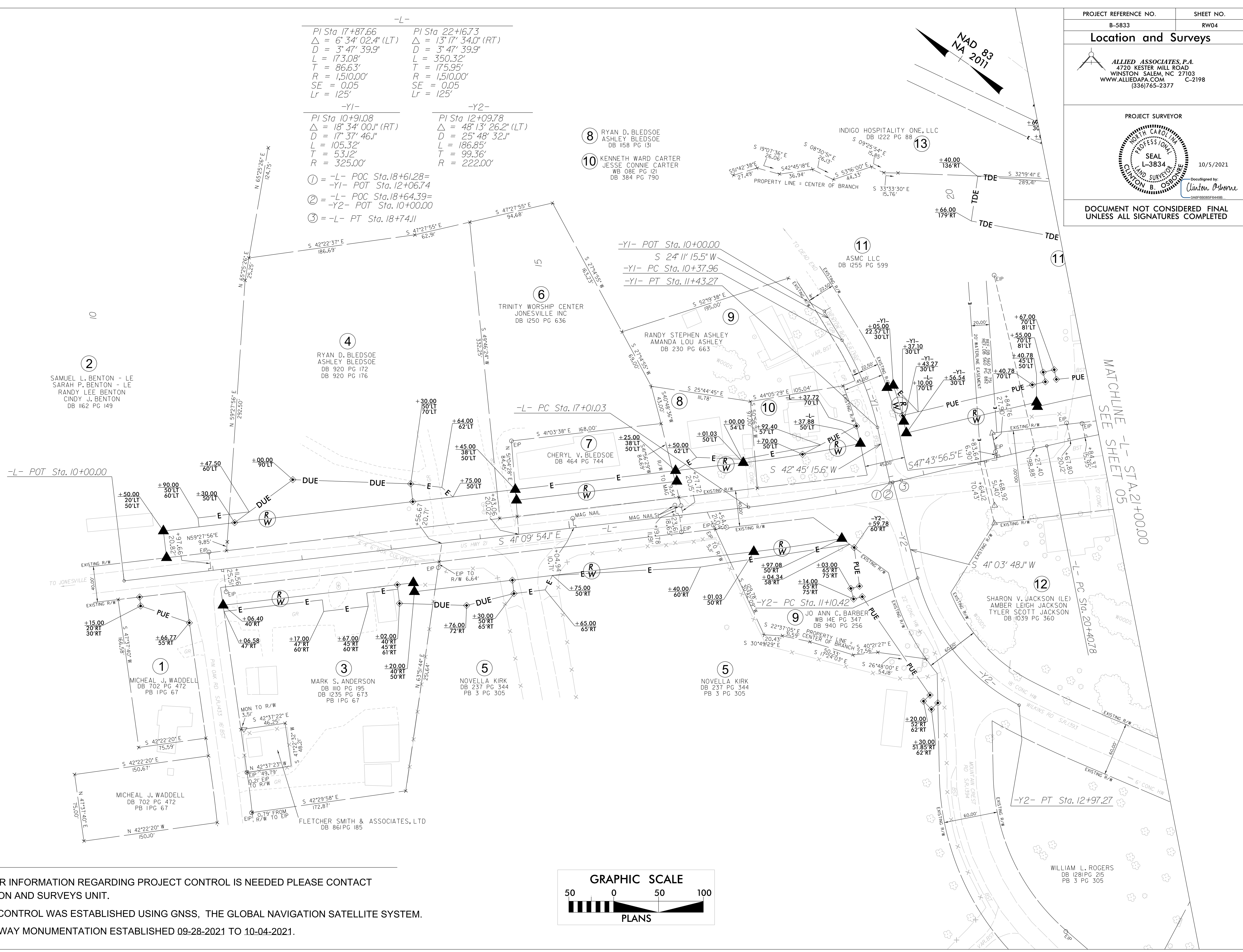
PI Sta. 17+87.66 Δ = 6° 34' 02.4" (LT) D = 3° 47' 39.9" L = 173.08' T = 86.63' R = 1,510.00' SE = 0.05 Lr = 125'	PI Sta. 22+16.73 Δ = 13° 17' 34.0" (RT) D = 3° 47' 39.9" L = 350.32' T = 175.95' R = 1,510.00' SE = 0.05 Lr = 125'
---	---

-Y1-                      -Y2-

PI Sta. 10+91.08 Δ = 18° 34' 00.1" (RT) D = 17° 37' 46.1" L = 105.32' T = 53.12' R = 325.00'	PI Sta. 12+09.78 Δ = 48° 13' 26.2" (LT) D = 25° 48' 32.1" L = 186.85' T = 99.36' R = 222.00'
---	---

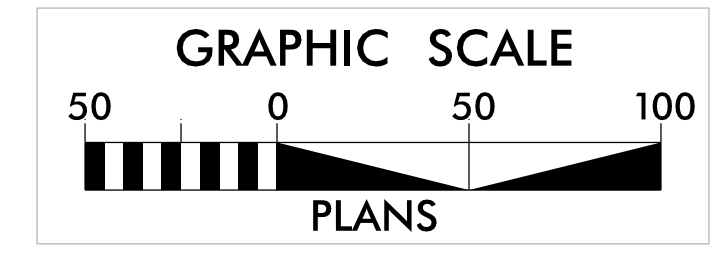
- ① = -L- POC Sta. 18+61.28 =  
-Y1- POT Sta. 12+06.74
- ② = -L- POC Sta. 18+64.39 =  
-Y2- POT Sta. 10+00.00
- ③ = -L- PT Sta. 18+74.11

- ⑧ RYAN D. BLEDSOE  
ASHLEY BLEDSOE  
DB 1158 PG 131
- ⑩ KENNETH WARD CARTER  
JESSE CONNIE CARTER  
WB 08E PG 121  
DB 384 PG 790



**NOTES:**

1. IF FURTHER INFORMATION REGARDING PROJECT CONTROL IS NEEDED PLEASE CONTACT THE LOCATION AND SURVEYS UNIT.
2. PROJECT CONTROL WAS ESTABLISHED USING GNSS, THE GLOBAL NAVIGATION SATELLITE SYSTEM.
3. RIGHT OF WAY MONUMENTATION ESTABLISHED 09-28-2021 TO 10-04-2021.



05-OCT-2021 14:37  
 V:\Projects\B2109077.dgn\658333-1.s-rw04.dgn  
 Dwner: AT\_Owner-FC