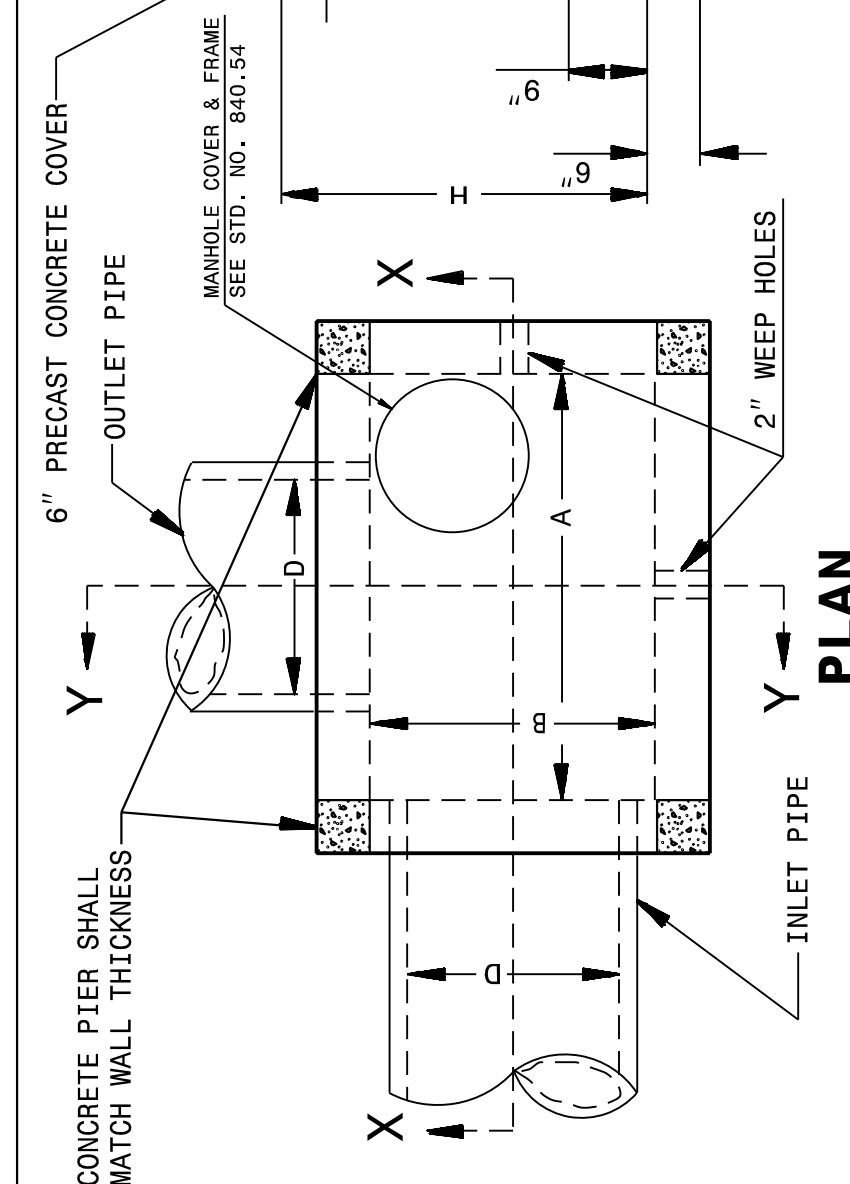


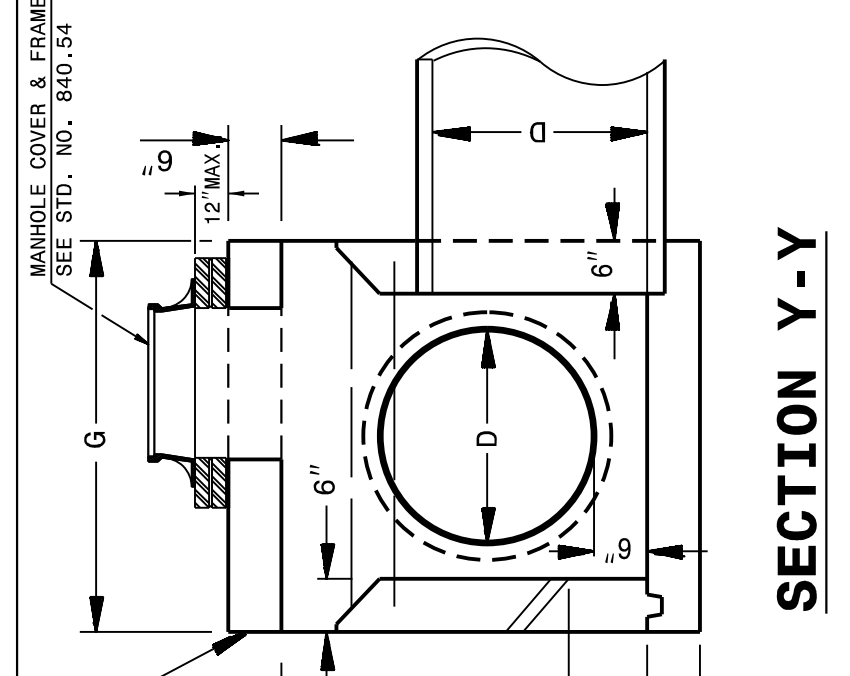
24-APR-2019 07:24  
 S:\Contracts\Contractors\Special Details\jhover-ton\840d04 3 or 4 side OTCB.dgn  
 jhover-ton AT CSD-292595

5/14/99

STATE OF  
 NORTH CAROLINA  
 DEPT. OF TRANSPORTATION  
 DIVISION OF HIGHWAYS  
 RALEIGH, N.C.



SECTION X-X

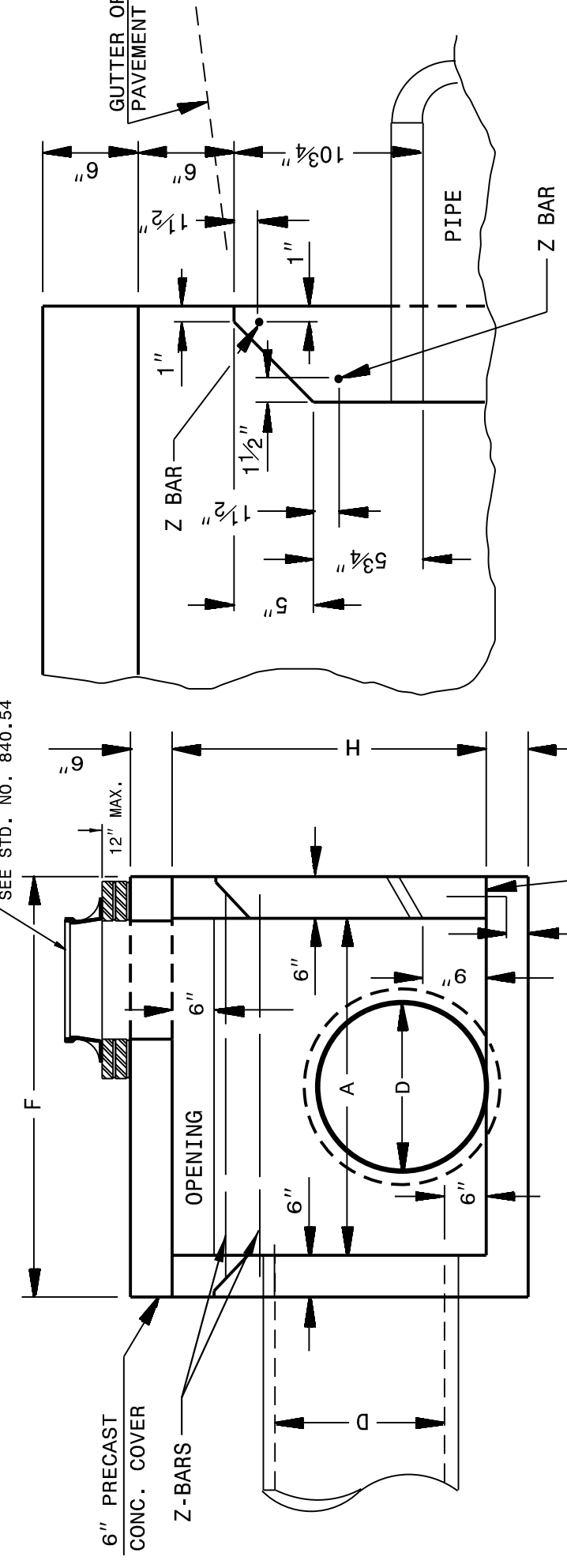


SECTION Y-Y

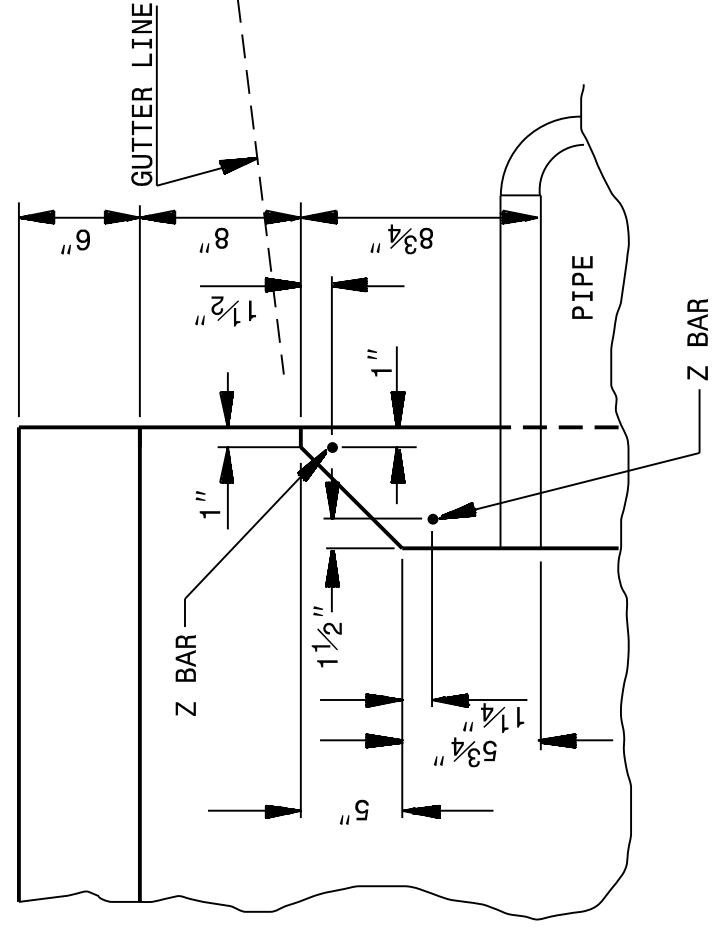
**GENERAL NOTES:**  
 ALL CATCH BASINS OVER 3'-6" IN DEPTH TO BE PROVIDED WITH STEPS 12" ON CENTERS. STEPS SHALL BE IN ACCORDANCE WITH STD. 840.66. ALL EXPOSED CORNERS TO BE CHAMFERED 1". CLASS "B" CONCRETE TO BE USED THROUGHOUT.  
 2" PIPE WEEPHOLES TO BE PLACED AS DIRECTED BY THE ENGINEER. THE 6" OPENING SHOWN MAY BE INCREASED TO 8" MAXIMUM IF DEEMED TO BE NECESSARY BY THE ENGINEER.  
 OPTIONAL CONSTRUCTION - MONOLITHIC POUR, 2" KEYWAY, OR #5 BAR DOWELS FORMS ARE TO BE USED FOR THE CONSTRUCTION OF THE BOTTOM SLAB.  
 IF REINFORCED CONCRETE PIPE IS SET IN BASE SLAB OF BOX, ADD TO BASE AS SHOWN ON STD. DWG. 840.00.  
 A STONE DRAIN CONSISTING OF 1 CUBIC FOOT OF NO. 78M STONE CONTAINED IN A BAG OF POROUS FABRIC SHALL BE PLACED AT EACH WEEP HOLE. FOR 8" IN HEIGHT OR LESS USE 6" WALLS AND BOTTOM SLAB. QUANTITIES OVER 8" IN HEIGHT USE 8" WALLS AND BOTTOM SLAB. QUANTITIES TO BE ADJUSTED ACCORDINGLY.  
 DIMENSIONS MAY BE ADJUSTED AS DIRECTED BY THE ENGINEER.

STATE OF  
 NORTH CAROLINA  
 DEPT. OF TRANSPORTATION  
 RALEIGH, N.C.

ENGLISH DETAIL DRAWING FOR  
**CONCRETE CATCH BASIN  
 (3 OR 4 SIDE OPEN THROAT)  
 (MANHOLE OPTIONAL)**



PART SECTION X-X



PART SECTION Y-Y

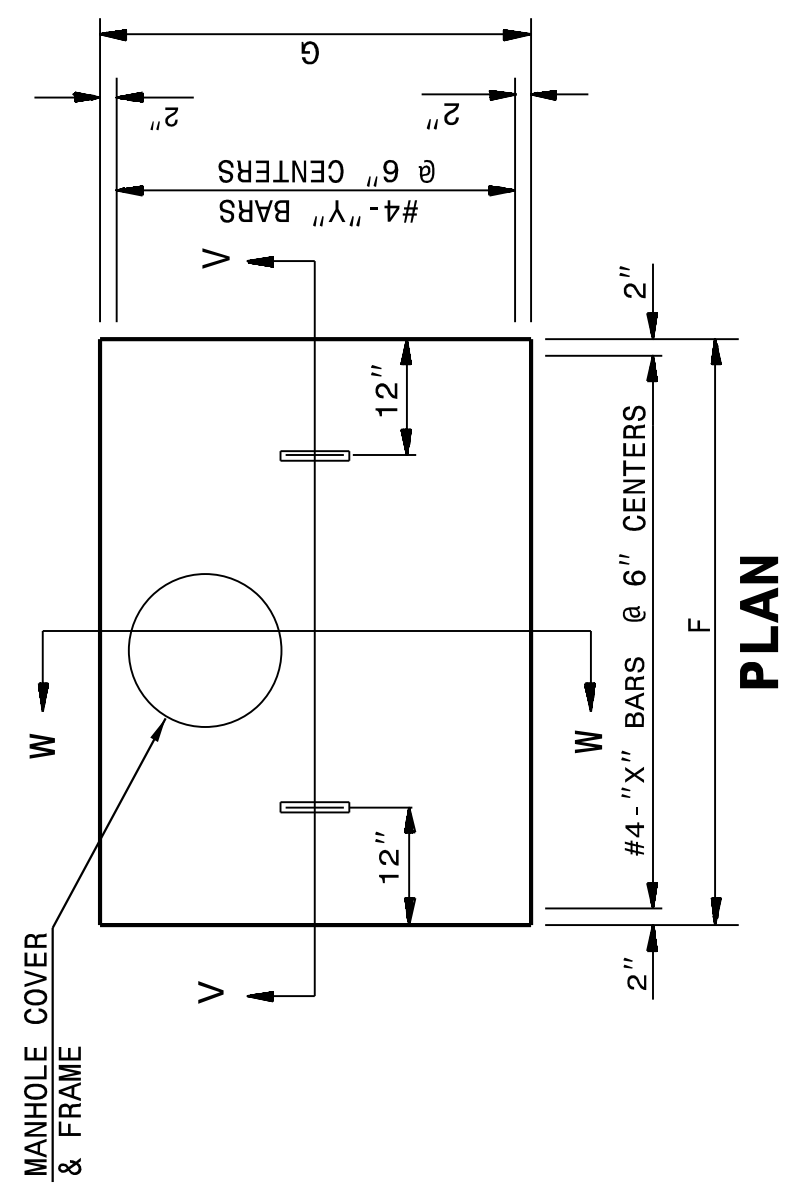
SHOWING METHOD OF CONSTRUCTION IF INCREASED OPENING IS USED

| PIPE DIM'S | MIN. DIMENSIONS AND QUANTITIES FOR CONCRETE CATCH BASIN (BASED ON MIN. HEIGHT, H) |       |        |              | TOP & BOT. SLAB DIMENSIONS | CU. YDS. CONC. IN BOX | TOTAL QUANTITIES |       |                      | DEDUCTION ONE PIPE 6" THROAT OPENING | R.C. YO <sup>3</sup>     |      |       |       |       |       |
|------------|---|-------|--------|--------------|----------------------------|-----------------------|------------------|-------|----------------------|--------------------------------------|--------------------------|------|-------|-------|-------|-------|
|            | SPAN  | WIDTH | HEIGHT | REINFORCING  |                            |                       | BOX & SLABS      | REIN. | C.S.                 |                                      |                          | R.C. |       |       |       |       |
| D          | A   | B     | H      | NO.   LENGTH | NO.   LENGTH               | NO.   LENGTH          | F                | G     | TOP SLAB (BOT. SLAB) | MLL (FT. HT.   LB. REIN.)            | YO <sup>3</sup> (MIN. H) | C.S. | R.C.  |       |       |       |
| 12"        | 3'-6"   | 2'-3" | 1'-10" | 4   3'-0"    | 6   4'-3"                  | 2   4'-3"             | 4'-6"            | 3'-3" | 0.181                | 0.271                                | 0.250                    | 27   | 1.046 | 0.015 | 0.032 | 0.046 |
| 15"        | 3'-6"   | 2'-3" | 2'-1"  | 4   3'-0"    | 6   4'-3"                  | 2   4'-3"             | 4'-6"            | 3'-3" | 0.181                | 0.271                                | 0.250                    | 27   | 1.108 | 0.023 | 0.036 | 0.046 |
| 18"        | 4'-0"   | 2'-8" | 2'-4"  | 5   3'-5"    | 7   4'-9"                  | 2   4'-9"             | 5'-0"            | 3'-8" | 0.226                | 0.340                                | 0.284                    | 35   | 1.379 | 0.033 | 0.049 | 0.053 |
| 24"        | 4'-0"   | 2'-8" | 2'-10" | 5   3'-5"    | 7   4'-9"                  | 2   4'-9"             | 5'-0"            | 3'-8" | 0.226                | 0.340                                | 0.284                    | 35   | 1.521 | 0.059 | 0.085 | 0.083 |
| 30"        | 4'-0"   | 3'-6" | 3'-4"  | 5   4'-3"    | 9   4'-9"                  | 2   4'-9"             | 5'-0"            | 4'-6" | 0.278                | 0.417                                | 0.315                    | 43   | 1.916 | 0.092 | 0.127 | 0.053 |
| 36"        | 4'-0"   | 4'-6" | 3'-10" | 5   4'-9"    | 10   5'-3"                 | 2   5'-3"             | 5'-6"            | 5'-0" | 0.340                | 0.510                                | 0.362                    | 51   | 2.390 | 0.132 | 0.178 | 0.069 |
| 42"        | 5'-0"   | 4'-6" | 4'-4"  | 5   5'-3"    | 12   5'-9"                 | 2   5'-9"             | 6'-0"            | 5'-6" | 0.407                | 0.611                                | 0.389                    | 64   | 2.914 | 0.180 | 0.243 | 0.066 |
| 48"        | 5'-0"   | 5'-0" | 4'-10" | 5   5'-9"    | 13   5'-9"                 | 2   5'-9"             | 6'-0"            | 6'-0" | 0.444                | 0.666                                | 0.407                    | 68   | 3.298 | 0.235 | 0.317 | 0.066 |

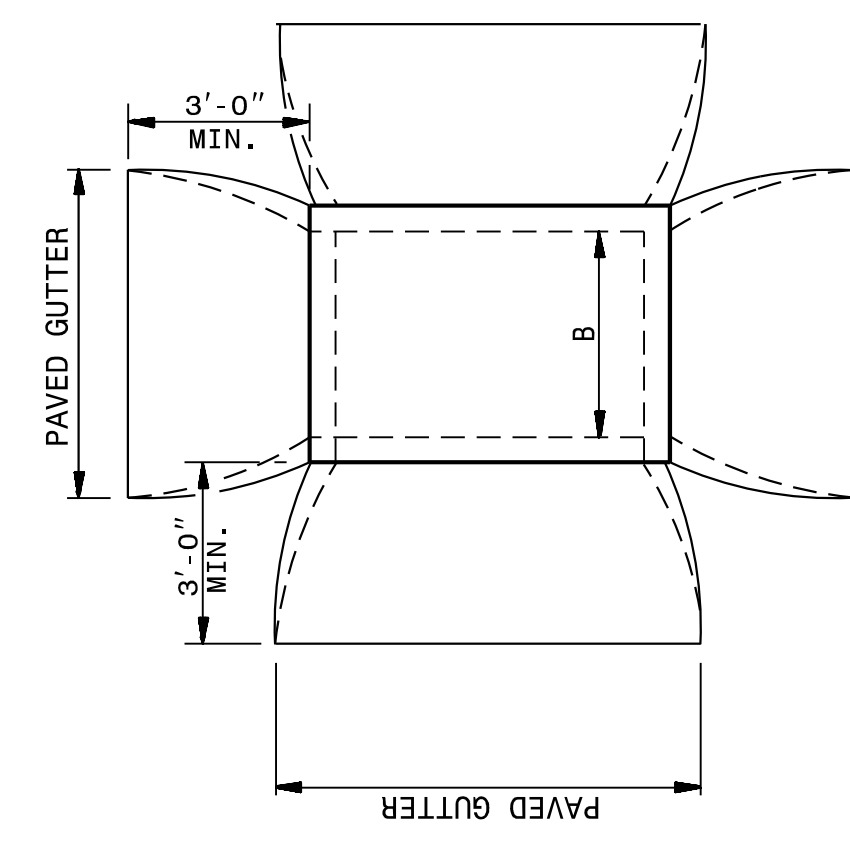
SHEET 1 OF 2  
**840D04**

SHEET 1 OF 2  
**840D04**

STATE OF  
 NORTH CAROLINA  
 DEPT. OF TRANSPORTATION  
 DIVISION OF HIGHWAYS  
 RALEIGH, N.C.

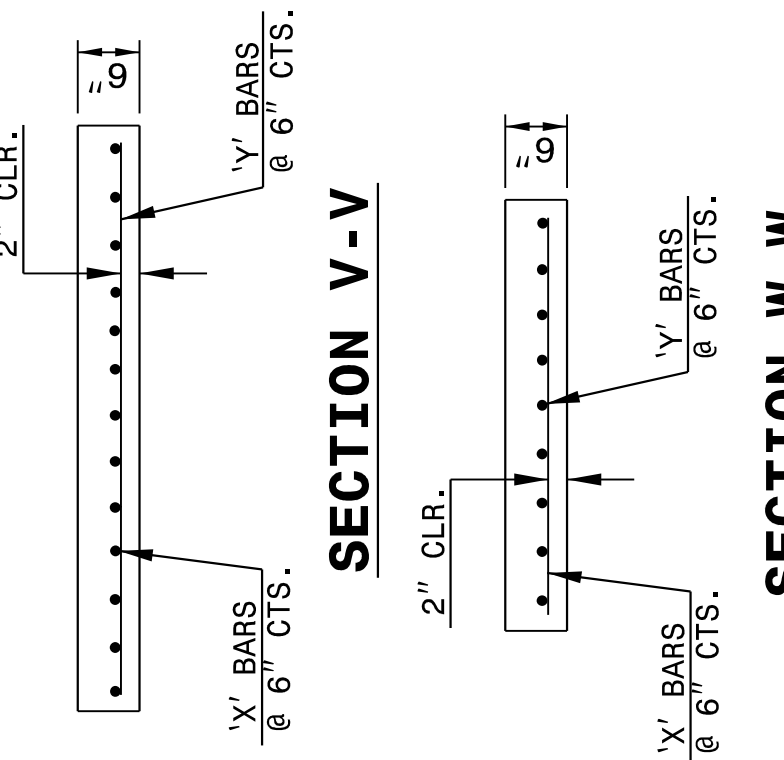


PLAN OF PRECAST COVER

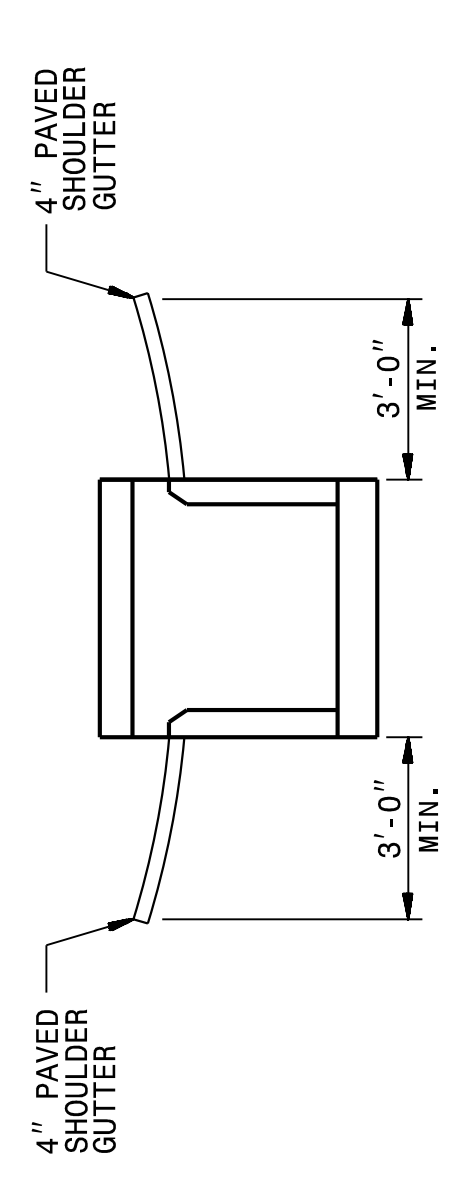


PLAN OF CATCH BASIN IN MEDIAN STRIP

ENGLISH DETAIL DRAWING FOR  
**CONCRETE CATCH BASIN  
 (3 OR 4 SIDE OPEN THROAT)  
 (MANHOLE OPTIONAL)**

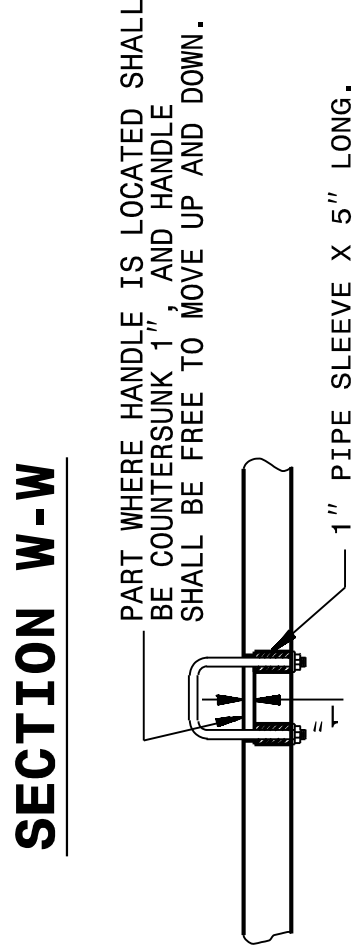


SECTION V-V



SECTION OF CATCH BASIN MEDIAN STRIP

DETAIL SHOWING METHOD OF PLACING CATCH BASIN AND PAVED SHOULDER GUTTER



PART SECTION W-W

PART WHERE HANDLE IS LOCATED SHALL BE COUNTERSUNK 1" AND HANDLE SHALL BE FREE TO MOVE UP AND DOWN.

1" PIPE SLEEVE X 5" LONG.

PART SECTION THRU COVER SHOWING HANDLE

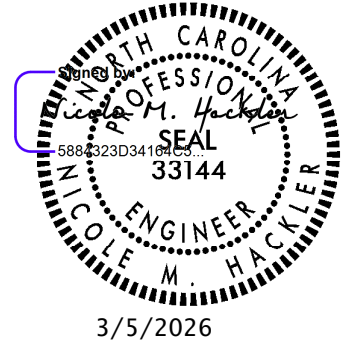
SHEET 2 OF 2  
**840D04**

SHEET 2 OF 2  
**840D04**

CONTRACT STANDARDS AND DEVELOPMENT UNIT  
 Office 919-707-6950 FAX 919-250-4119

**SEE PLATE FOR TITLE**

ORIGINAL BY: \_\_\_\_\_ DATE: \_\_\_\_\_  
 MODIFIED BY: rnbritt DATE: 07-03-2014  
 CHECKED BY: \_\_\_\_\_ DATE: \_\_\_\_\_  
 FILE SPEC.: details/rnbritt/english/hydro/840d04.dgn



DOCUMENT NOT CONSIDERED FINAL UNLESS ALL SIGNATURES COMPLETED