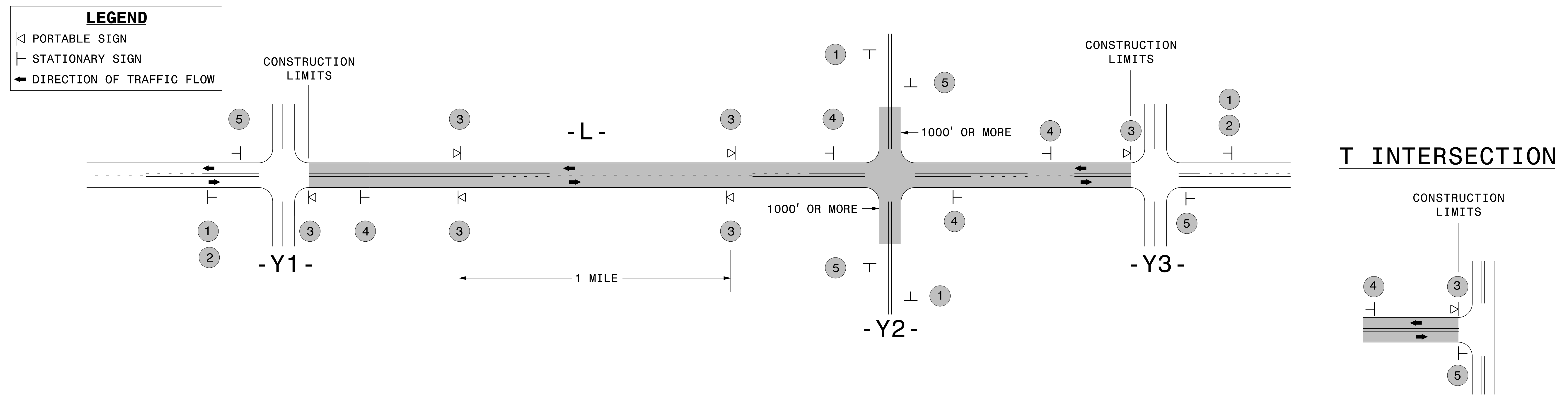


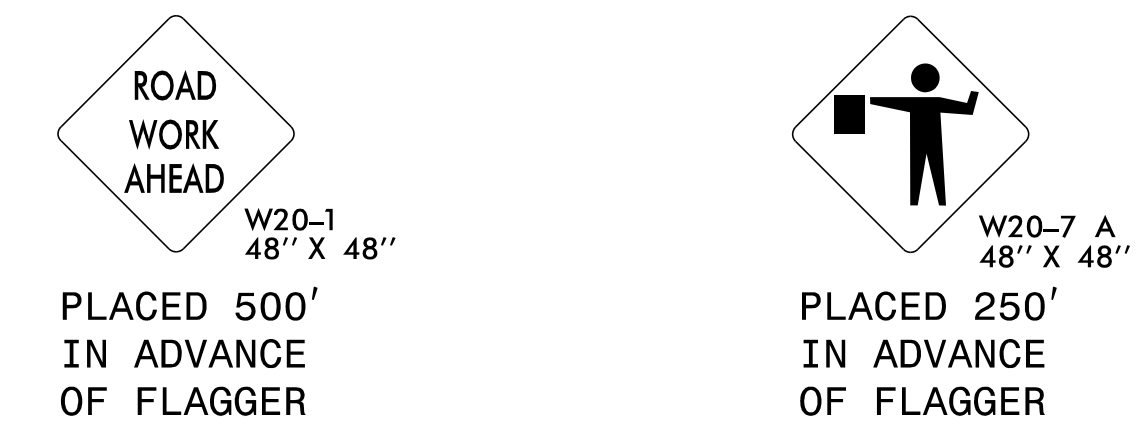
SIGNING FOR ASPHALT SURFACE TREATMENT



MAINLINE (-L-) SIGNING

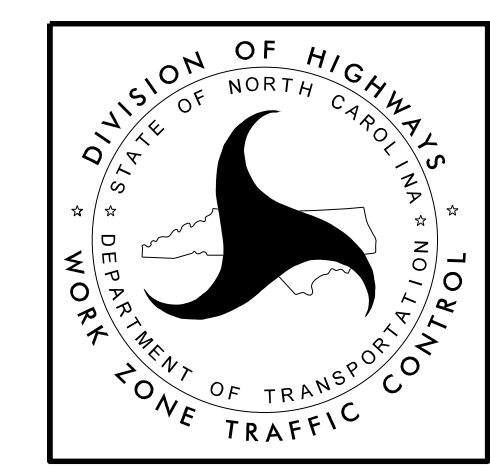
-Y- LINE SIGNING

SIGNING NOTES AND PLACEMENT PER DIRECTION	 	<ul style="list-style-type: none"> - PLACE 1000' PRIOR TO BEGINNING OF CONSTRUCTION LIMITS. - SIGN 2 MAY BE OMITTED FOR T INTERSECTIONS. FOLLOW T INTERSECTION SIGNING DETAIL ABOVE. - SIGN 2 MAY BE OMITTED WHEN CONSTRUCTION LIMITS ARE LESS THAN 2 MILES IN LENGTH. ROUND UP TO THE NEAREST WHOLE NUMBER. DO NOT USE FRACTIONAL OR DECIMAL NUMBERS. 	<p>NO STATIONARY SIGNING REQUIRED FOR THE FOLLOWING -Y- LINE CONDITIONS:</p> <ol style="list-style-type: none"> 1) LESS THAN 1000' OF RESURFACING ALONG -Y- LINE 2) SUBDIVISION ROADS 3) DEAD END ROADS <p>SIGNS 1 & 5 ARE REQUIRED FOR -Y- LINES WITH 1000' OR MORE OF RESURFACING OR PAVING</p> <p>WHEN PAVING/CONSTRUCTION ACTIVITIES PROCEED ACROSS AN UNSIGNED -Y- LINE, PORTABLE MOUNTED ADVANCE WARNING SIGNS SHALL BE USED ALONG THE -Y- LINE AS SHOWN BELOW. REMOVE UPON COMPLETION OF WORK.</p>
	<p>ALTERNATE SIGNS</p> 	<ul style="list-style-type: none"> - BEGIN SEQUENCE WITH LOOSE GRAVEL SIGN INSTALLED AT THE CONSTRUCTION LIMITS FOLLOWED BY AN UNMARKED PAVEMENT SIGN INSTALLED A MILE THEREAFTER. REPEAT SEQUENCE THROUGHOUT CONSTRUCTION LIMITS. - PLACE ADDITIONAL PORTABLE MOUNTED LOOSE GRAVEL SIGNS WITHIN 100' OF -Y- LINE APPROACH DURING CURE TIME. REMOVE WHEN PAVEMENT MARKINGS ARE INSTALLED. 	
		<ul style="list-style-type: none"> - INSTALL 500' FROM EACH -Y- LINE APPROACH AS SHOWN ABOVE. - FOR MULTIPLE -Y- LINES THAT ARE SEPARATED BY 0.25 MILES OR LESS, TREAT AS A SINGLE UNIT AND INSTALL WITHIN 500' OF EACH APPROACH. - FOR T INTERSECTIONS, INSTALL WITHIN 500' OF THE INTERSECTION. 	
		<ul style="list-style-type: none"> - PLACE 500' FOLLOWING THE END OF CONSTRUCTION LIMITS OR WITHIN 100' OF T INTERSECTION AS SHOWN IN THE ABOVE DETAIL. 	
	<p>THE ABOVE SIGNS ARE ALL THAT ARE REQUIRED FOR A CONTRACTOR TO BEGIN A RESURFACING CONTRACT. ANY ADDITIONAL SIGNS REQUESTED BY NCDOT DIVISIONS SHALL BE INSTALLED WITHIN 7 BUSINESS DAYS OF THE START OF CONTRACT WORK.</p>		



MAPS LESS THAN 2 MILES

FOR AST RESURFACING MAPS WITH CONSTRUCTION LIMITS LESS THAN 2 MILES IN LENGTH, INSTALL A PORTABLE MOUNTED LOOSE GRAVEL (W8-7) SIGN AT THE BEGINNING CONSTRUCTION LIMIT, AN UNMARKED PAVEMENT (SP) SIGN MIDWAY THROUGH AND AN END ROAD WORK (G20-2A) SIGN AT THE END CONSTRUCTION LIMIT.



ADVANCE WARNING SIGNS FOR 2-LANE ROADWAY ASPHALT SURFACE TREATMENT