

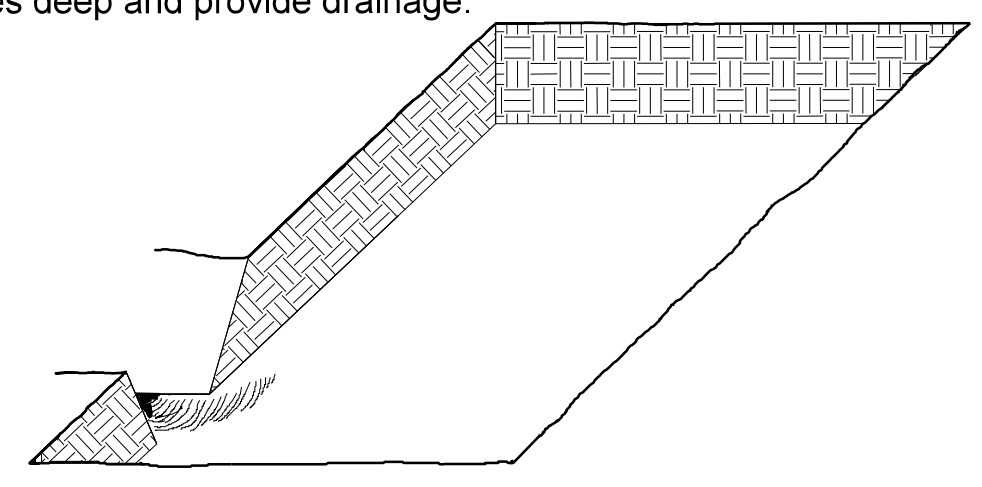
STATE	STATE PROJECT REFERENCE NO.	SHEET NO.	TOTAL SHEETS
N.C.	BR-0004	RF-1	
STATE PROJ. NO.	F. A. PROJ. NO.	DESCRIPTION	

PLANTING DETAILS

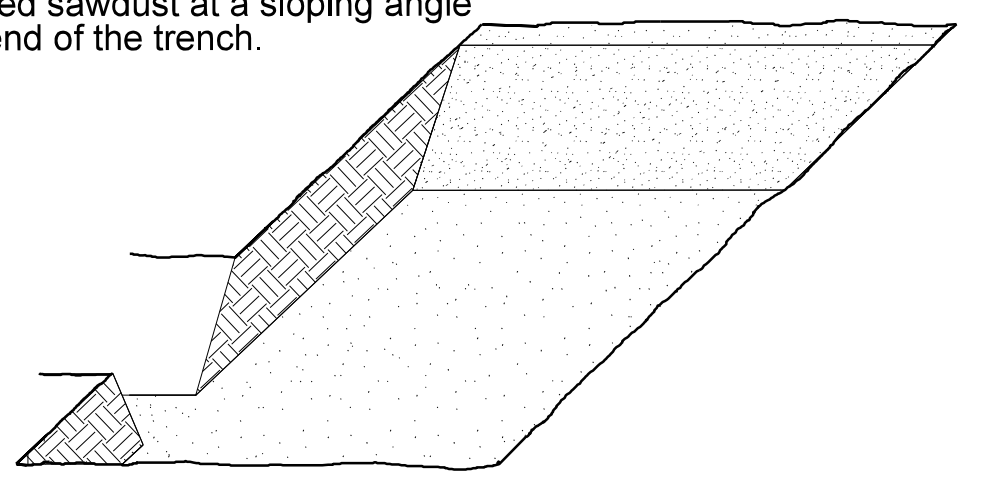
SEEDLING / LINER BAREROOT PLANTING DETAIL

HEALING IN

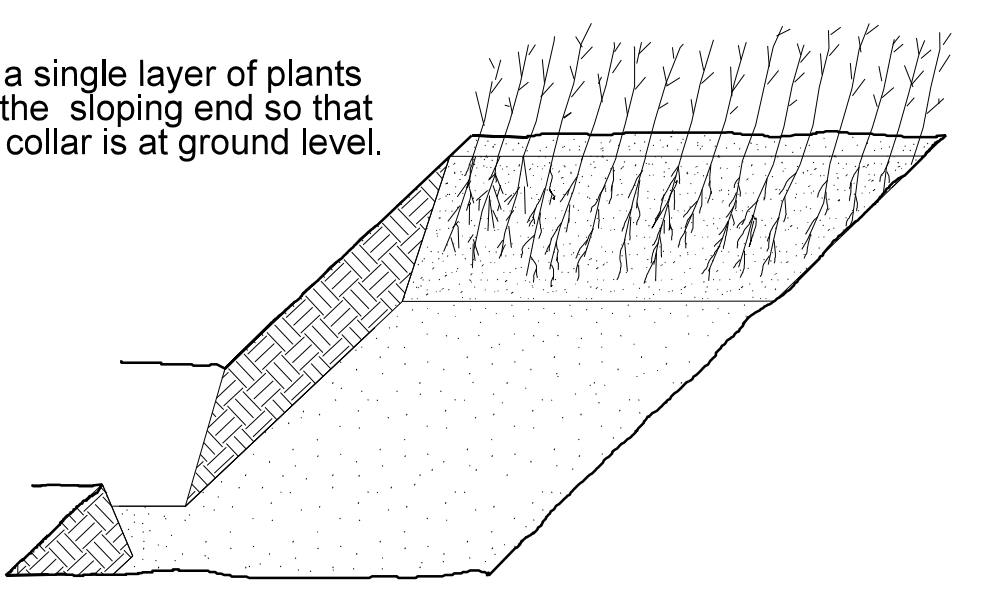
1. Locate a healing-in site in a shady, well protected area.
2. Excavate a flat bottom trench 12 inches deep and provide drainage.



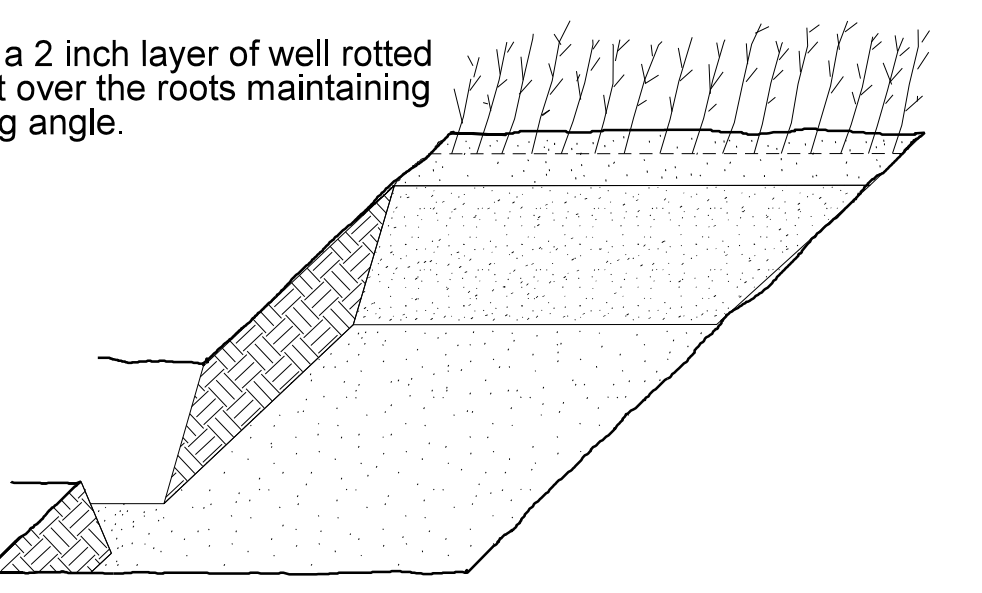
3. Backfill the trench with 2 inches well rotted sawdust. Place a 2 inch layer of well rotted sawdust at a sloping angle at one end of the trench.



4. Place a single layer of plants against the sloping end so that the root collar is at ground level.

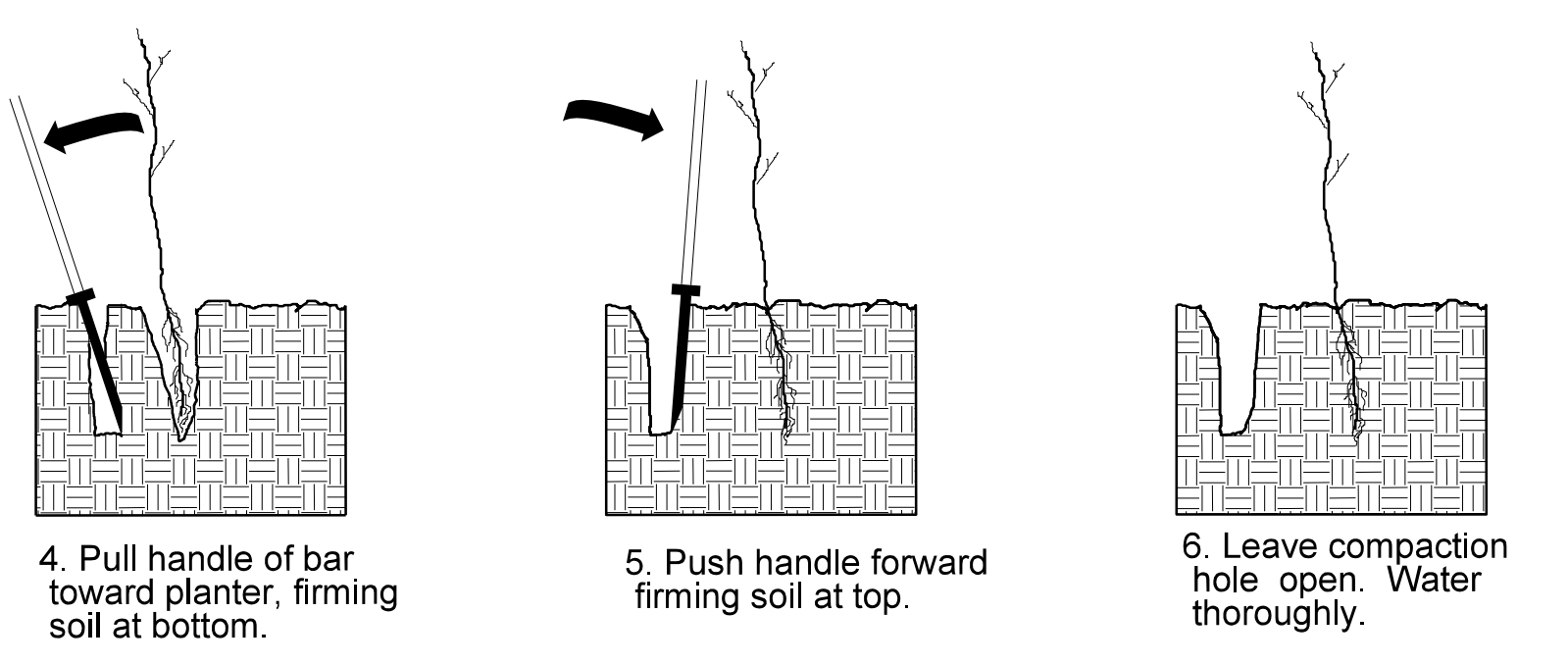
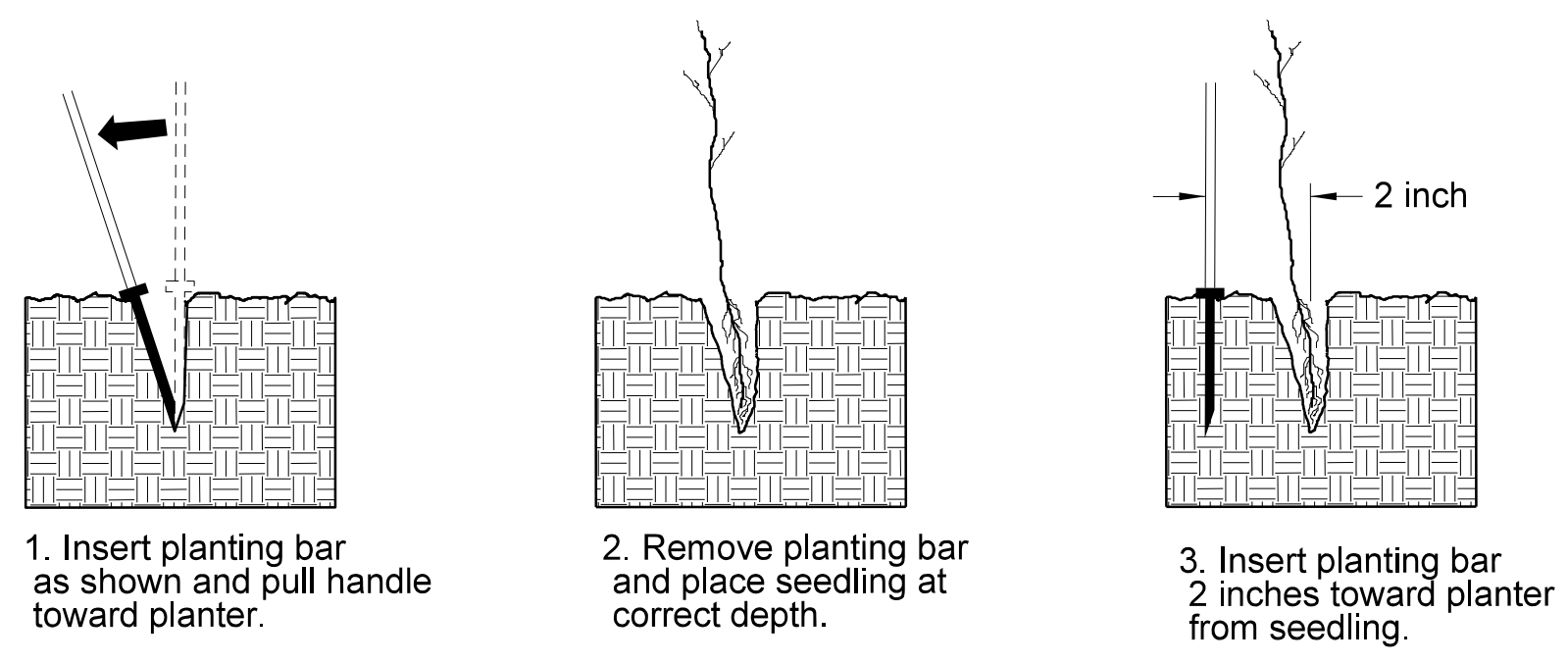


5. Place a 2 inch layer of well rotted sawdust over the roots maintaining a sloping angle.



6. Repeat layers of plants and sawdust as necessary and water thoroughly.

DIBBLE PLANTING METHOD USING THE KBC PLANTING BAR

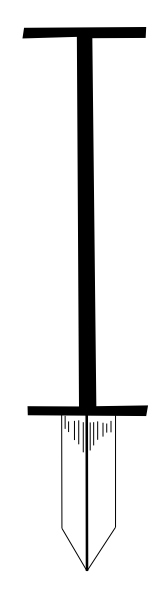


PLANTING NOTES:

PLANTING BAG
During planting, seedlings shall be kept in a moist canvas bag or similar container to prevent the root systems from drying.



KBC PLANTING BAR
Planting bar shall have a blade with a triangular cross section, and shall be 12 inches long, 4 inches wide and 1 inch thick at center.



ROOT PRUNING
All seedlings shall be root pruned, if necessary, so that no roots extend more than 10 inches below the root collar.

WETLAND REFORESTATION

- TREE REFORESTATION SHALL BE PLANTED 6 FT. TO 10 FT. ON CENTER, RANDOM SPACING, AVERAGING 8 FT. ON CENTER, APPROXIMATELY 680 PLANTS PER ACRE.

REFORESTATION *

MIXTURE, TYPE, SIZE, AND FURNISH SHALL CONFORM TO THE FOLLOWING:

25% QUERCUS NIGRA	WATER OAK	12 in - 18 in BR
25% PLATANUS OCCIDENTALIS	SYCAMORE	12 in - 18 in BR
25% BETULA NIGRA	RIVER BIRCH	12 in - 18 in BR
25% NYSSA SYLVATICA	BLACKGUM	12 in - 18 in BR

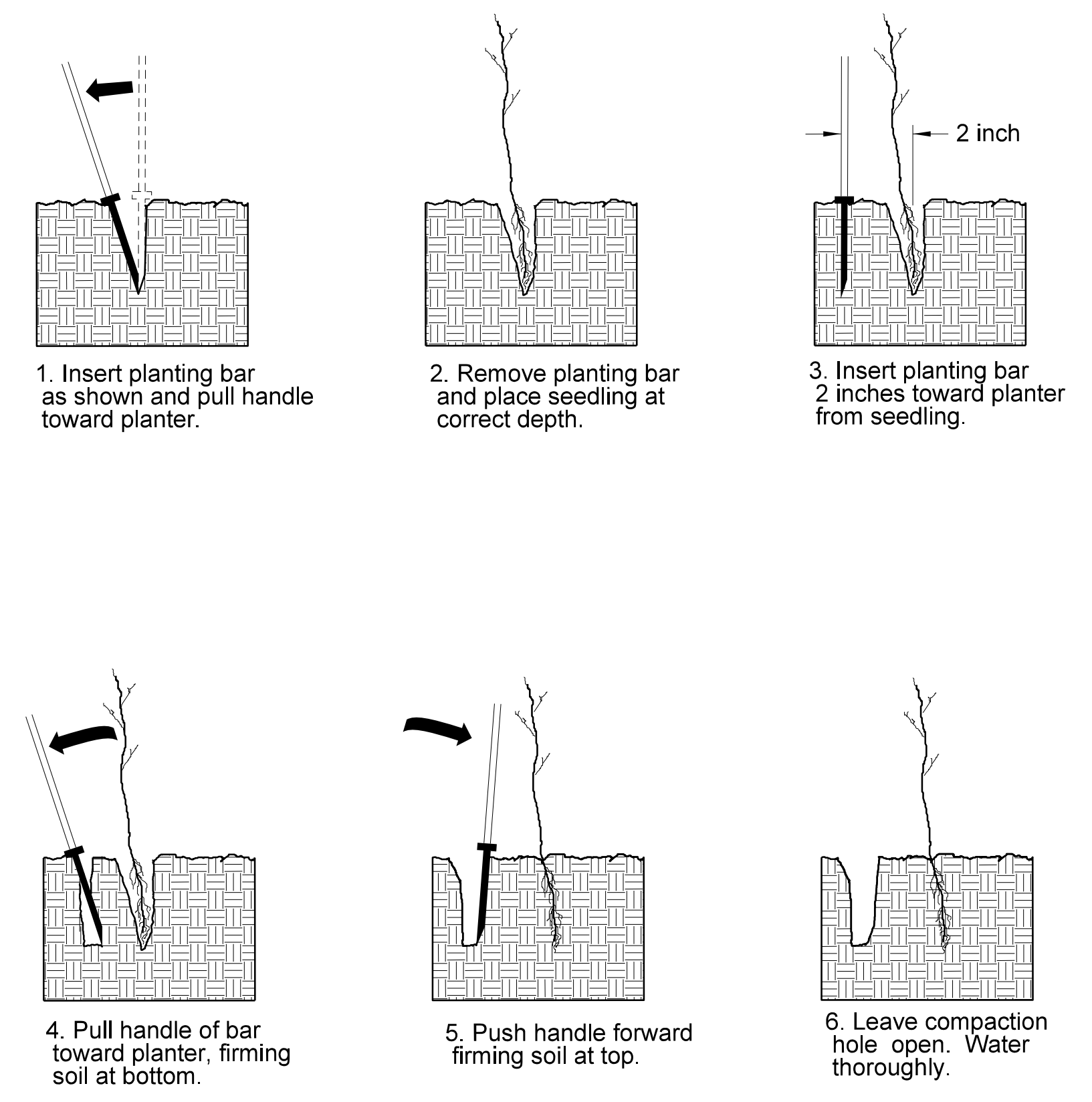
* NOTE: IF A SPECIES IS NOT AVAILABLE, SUBSTITUTIONS MAY BE ACCEPTABLE WITH THE APPROVAL OF THE ENGINEER.

STATE	STATE PROJECT REFERENCE NO.	SHEET NO.	TOTAL SHEETS
N.C.	BR-0004	RF-2	
STATE PROJ. NO.	F. A. PROJ. NO.	DESCRIPTION	

PLANTING DETAILS

SEEDLING / LINER BAREROOT PLANTING DETAIL

DIBBLE PLANTING METHOD USING THE KBC PLANTING BAR

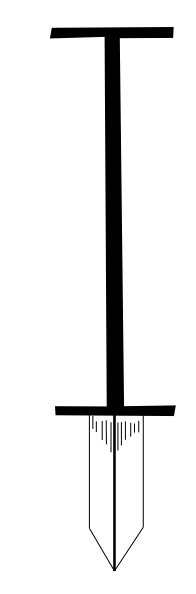


PLANTING NOTES:

PLANTING BAG
During planting, seedlings shall be kept in a moist canvas bag or similar container to prevent the root systems from drying.



KBC PLANTING BAR
Planting bar shall have a blade with a triangular cross section, and shall be 12 inches long, 4 inches wide and 1 inch thick at center.



WETLAND GRASS PLANTING

WETLAND GRASS SPECIES SHALL BE PLANTED 3 FT. ON CENTER, APPROXIMATELY 4,840 PLANTS PER ACRE.

CAMA WETLAND RESTORATION AREA 1*

MIXTURE, TYPE, SIZE, AND FURNISH SHALL CONFORM TO THE FOLLOWING:

50% JUNCUS ROEMERIANUS	BLACK NEEDLERUSH	2 in PEAT POT
50% SCHOENOPLECTUS PUNGENS	THREE-SQUARE BULRUSH	2 in PEAT POT

CAMA WETLAND RESTORATION AREA 2*

MIXTURE, TYPE, SIZE, AND FURNISH SHALL CONFORM TO THE FOLLOWING:

30% JUNCUS ROEMERIANUS	BLACK NEEDLERUSH	2 in PEAT POT
30% CLADIUM JAMAICENS	SAWGRASS	2 in PEAT POT
40% SPARTINA PATENS	SALT MEADOW CORDGRASS	2 in PEAT POT

* NOTE: IF A SPECIES IS NOT AVAILABLE, SUBSTITUTIONS MAY BE ACCEPTABLE WITH THE APPROVAL OF THE ENGINEER.

**WETLAND GRASS PLANTING
DETAIL SHEET**

N.C.D.O.T. - ROADSIDE ENVIRONMENTAL UNIT

