

09.08/2011

See Sheet 1A For Index of Sheets
See Sheet 1-B For Conventional Symbols
See Sheet RWQ2C-1-RWQ2C-6 For Survey Control Sheets

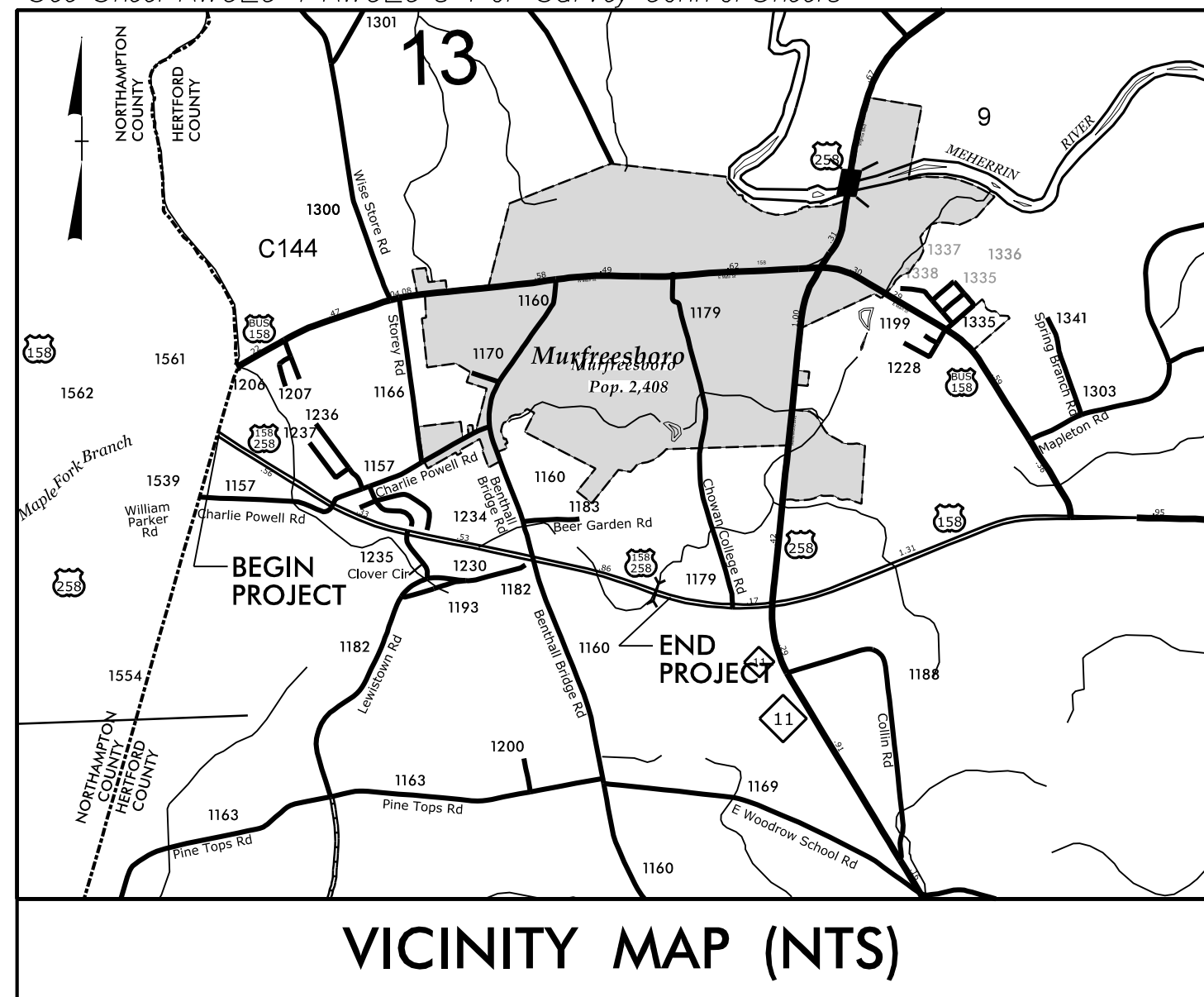
STATE OF NORTH CAROLINA
DIVISION OF HIGHWAYS

STATE	STATE PROJECT REFERENCE NO.	SHEET NO.	TOTAL SHEETS
N.C.	HS-2401P	EC-1	
STATE PROJ. NO.	F.A. PROJ. NO.	DESCRIPTION	
50973.1.17	5097316	PE	
50973.3.17	5097316	CONST.	
84016	N/A	CONST.	

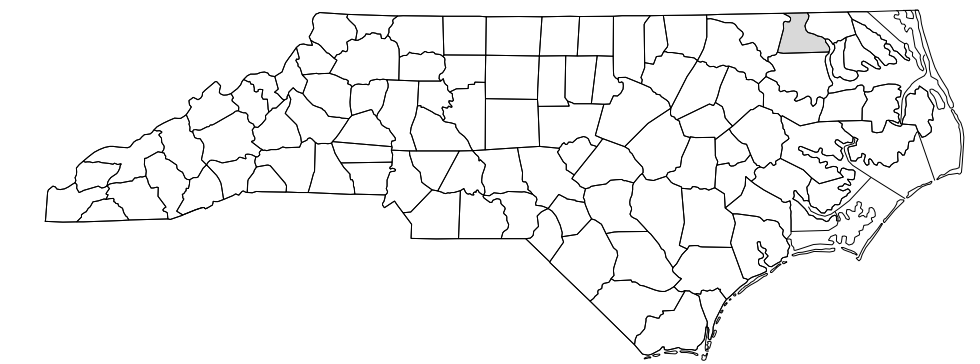
PLAN FOR PROPOSED
HIGHWAY EROSION CONTROL
HERTFORD COUNTY

LOCATION: US 158/258 AT SR 1157 (POWELL ROAD), SR 1230 (CLOVER CIRCLE)
AND SR 1160 (BENTHALL BRIDGE ROAD) INTERSECTIONS NEAR MURFREESBORO
TYPE OF WORK: GRADING, DRAINAGE, AND PAVING

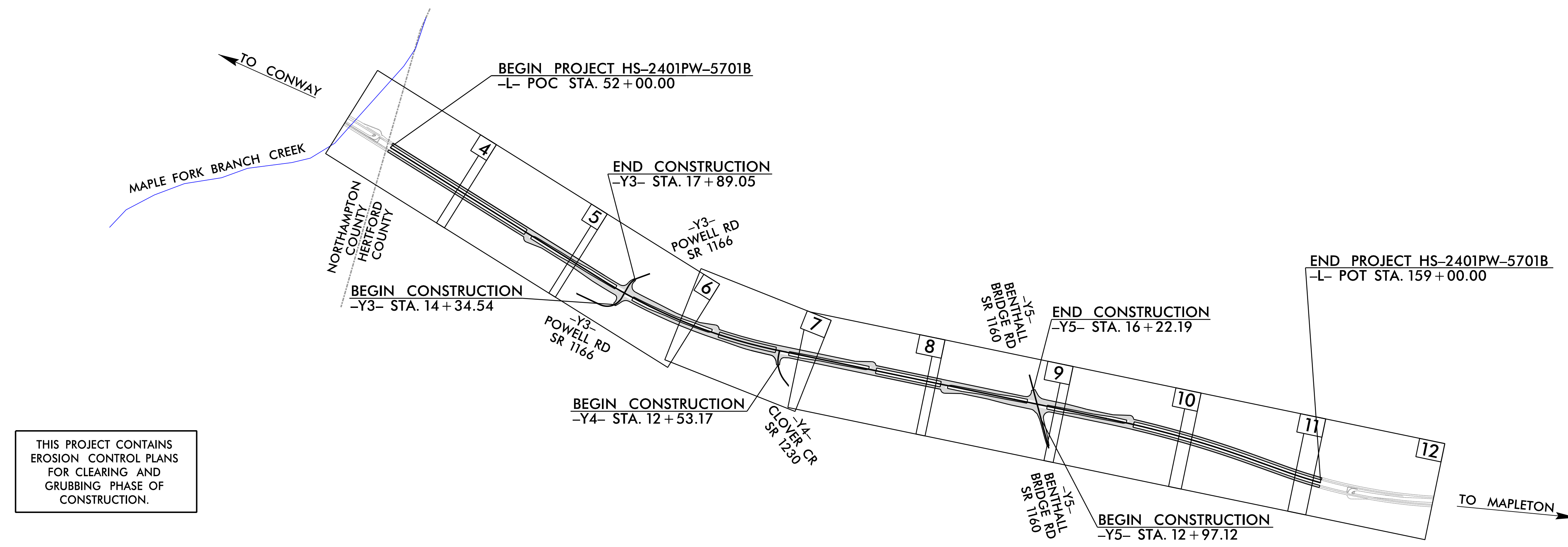
TIP PROJECT: HS-2401P



- Clearing and Grubbing Phase
- Both Phases
- Final Phase
- Matting For Erosion Control



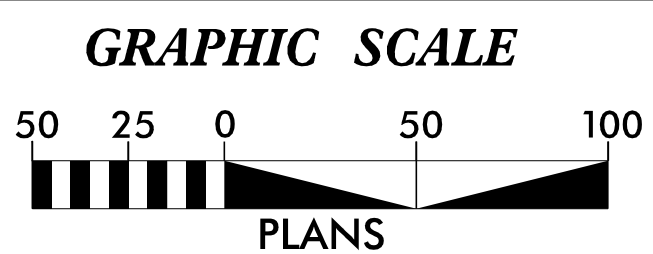
NAD 83/NA 2011



THIS PROJECT CONTAINS
EROSION CONTROL PLANS
FOR CLEARING AND
GRUBBING PHASE OF
CONSTRUCTION.

This project is not within any municipal boundaries.

CONTRACT: C205153



THESE EROSION AND SEDIMENT CONTROL PLANS COMPLY
WITH THE REGULATIONS SET FORTH BY THE NCG 010000
GENERAL STORMWATER CONSTRUCTION PERMIT ISSUED BY THE NORTH
CAROLINA DEPARTMENT OF ENVIRONMENTAL QUALITY DIVISION
OF ENERGY, MINERAL, AND LAND RESOURCES.



Prepared in the Office of:
ROADSIDE ENVIRONMENTAL UNIT
1 South Wilmington St.
Raleigh, NC 27611

2024 STANDARD SPECIFICATIONS

Designed by:
Courtland A. Hoffman, P.E. 4312
NAME LEVEL III CERTIFICATION NO.

Roadway Standard Drawings
The "Roadway Standard Drawings"- Roadway Design Unit - N. C.
Department of Transportation - Raleigh, N. C., dated January 2024
and the latest revision thereto are applicable to this project and by
reference hereby are considered a part of these plans.

2/23/2026, R:\Hydraulics\CADD\PSH\Erosion Control\HS-2401P_EC.tsh.dgn

DIVISION OF HIGHWAYS STATE OF NORTH CAROLINA

PROJECT REFERENCE NO. <i>HS-240IP</i>	SHEET NO. <i>EC-01A</i>
ROADWAY DESIGN ENGINEER	HYDRAULICS ENGINEER

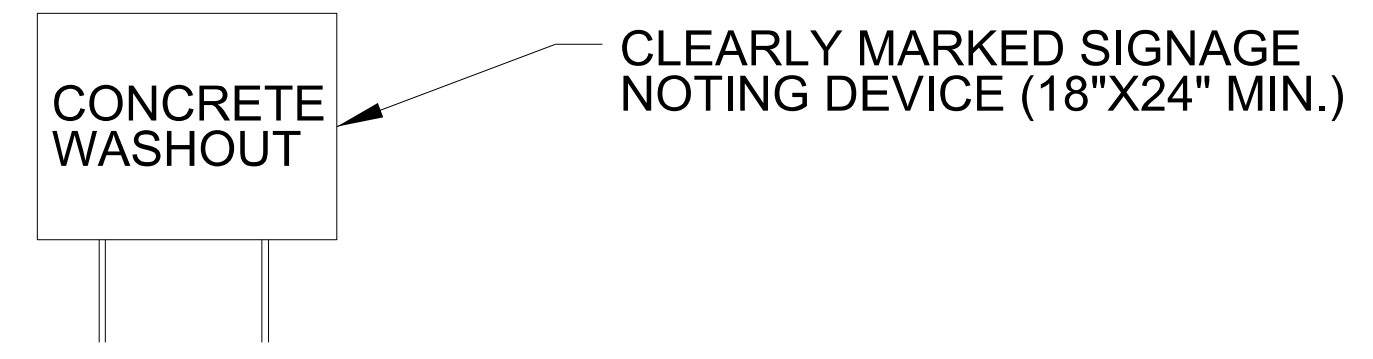
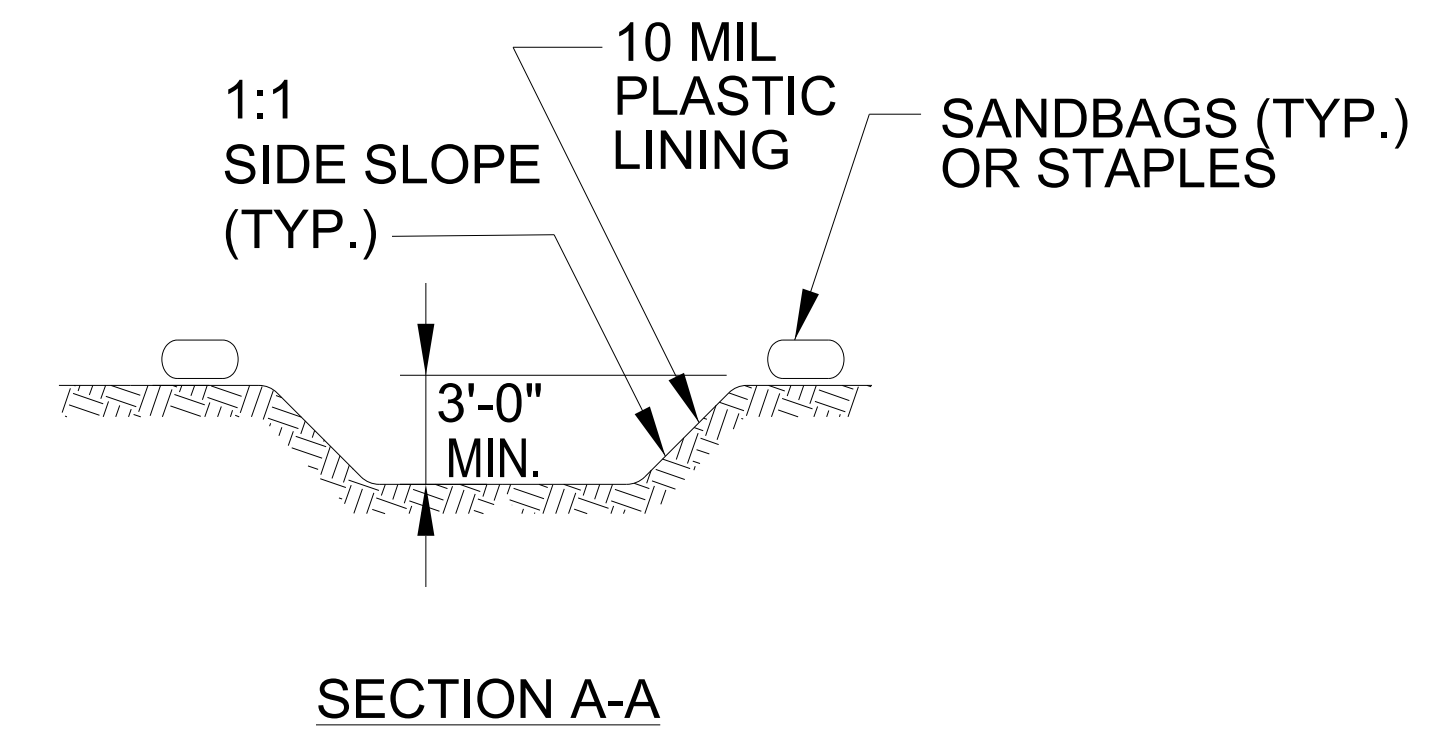
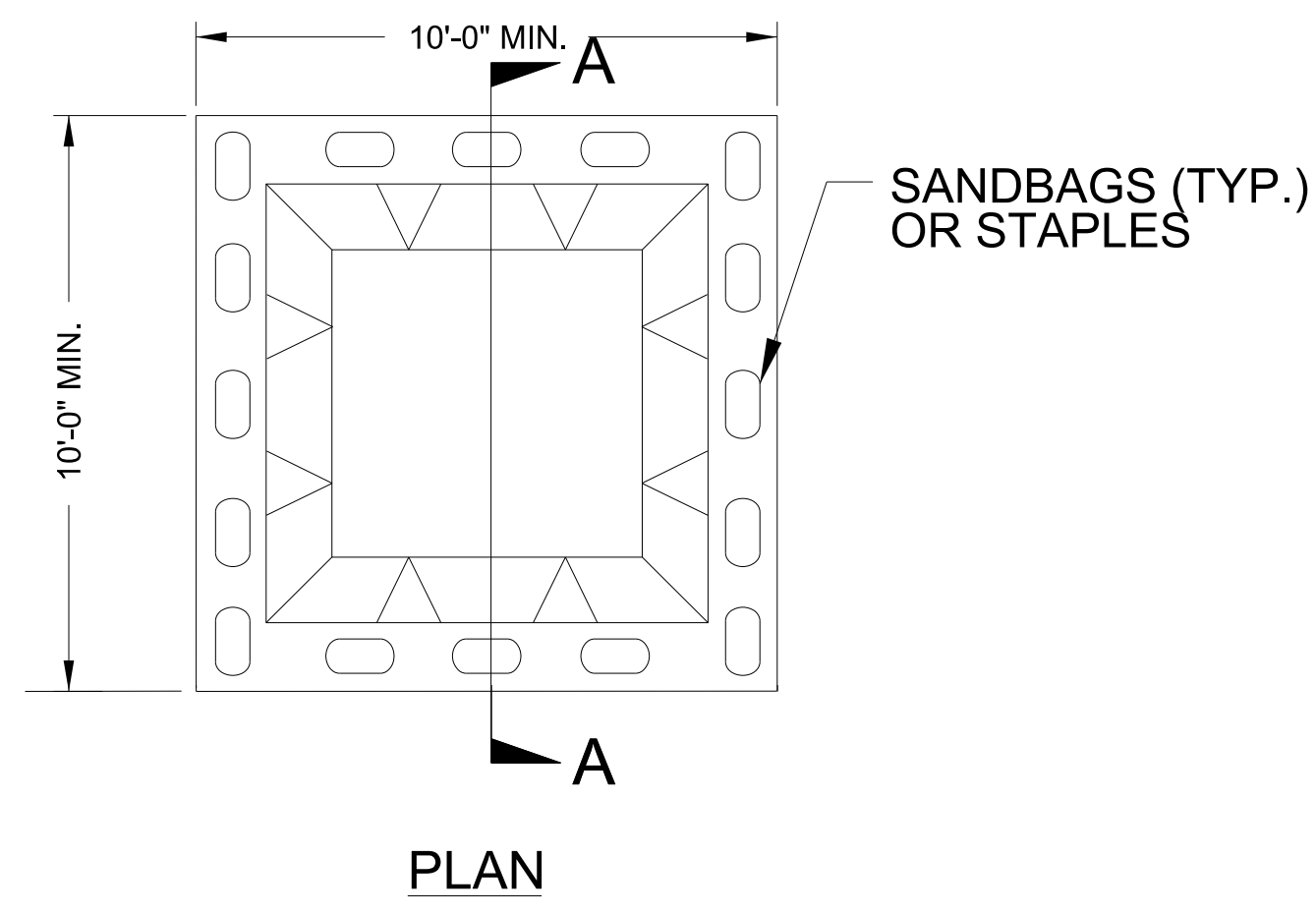
EROSION & SEDIMENT CONTROL LEGEND

Std. #	Description	Symbol	Std. #	Description	Symbol
1605.01	Temporary Silt Fence		1633.01	Temporary Rock Silt Check Type A	
1606.01	Special Sediment Control Fence		1633.02	Temporary Rock Silt Check Type B	
1622.01	Temporary Berms and Slope Drains		1633.03	Temporary Rock Silt Check Type A with Excelsior Matting and Flocculant	
1630.02	Silt Basin Type B		1634.01	Temporary Rock Sediment Dam Type A	
1630.03	Temporary Silt Ditch		1634.02	Temporary Rock Sediment Dam Type B	
1630.04	Stilling Basin		1635.01	Rock Pipe Inlet Sediment Trap Type A	
1630.05	Temporary Diversion		1635.02	Rock Pipe Inlet Sediment Trap Type B	
1630.06	Special Stilling Basin		1636.01	Excelsior Wattle Check	
1630.07	Skimmer Basin		1636.01	Excelsior Wattle Check with Flocculant	
1630.08	Tiered Skimmer Basin		1636.01	Coir Fiber Wattle Check	
1630.09	Earthen Dam with Skimmer		1636.01	Coir Fiber Wattle Check with Flocculant	
	Infiltration Basin		1636.02	Silt Fence Excelsior Wattle Break	
	Rock Inlet Sediment Trap:			Silt Fence Coir Fiber Wattle Break	
1632.01	Type A		1636.03	Excelsior Wattle Barrier	
1632.02	Type B		1636.03	Coir Fiber Wattle Barrier	
1632.03	Type C				

NOT TO SCALE

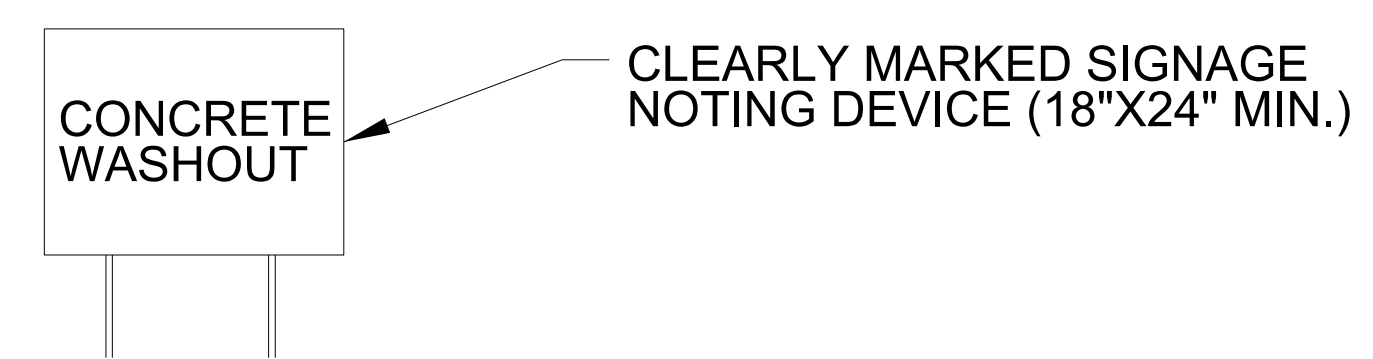
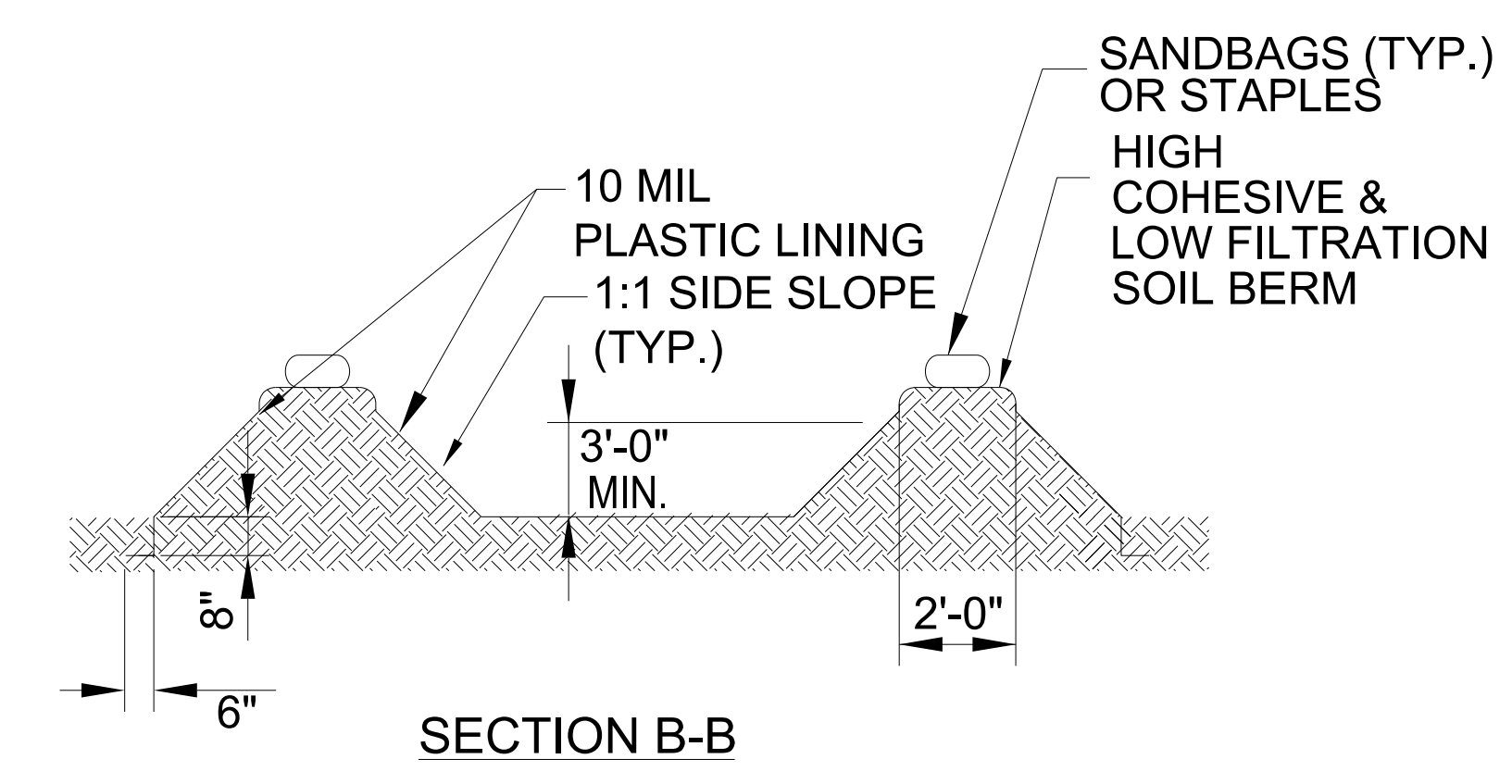
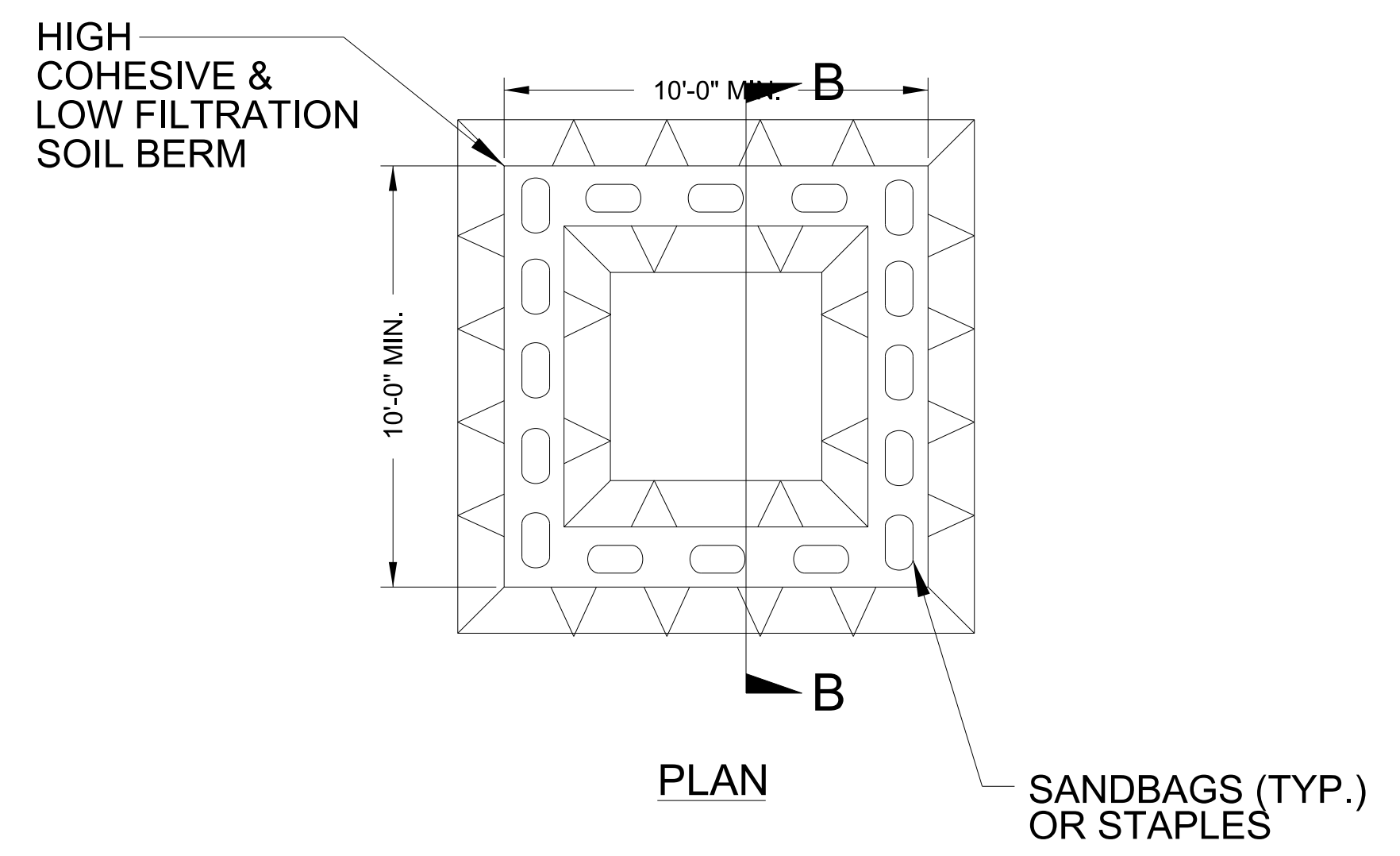
PROJECT REFERENCE NO. <i>HS-240IP</i>	SHEET NO. <i>EC-02</i>
ROADWAY DESIGN ENGINEER	HYDRAULICS ENGINEER

ONSITE CONCRETE WASHOUT STRUCTURE WITH LINER



BELOW GRADE WASHOUT STRUCTURE
NOT TO SCALE

- NOTES:**
1. ACTUAL LOCATION DETERMINED IN FIELD
 2. THE CONCRETE WASHOUT STRUCTURES SHALL BE MAINTAINED WHEN THE LIQUID AND/OR SOLID REACHES 75% OF THE STRUCTURES CAPACITY TO PROVIDE ADEQUATE HOLDING CAPACITY WITH A MINIMUM 12 INCHES OF FREEBOARD.
 3. CONCRETE WASHOUT STRUCTURE NEEDS TO BE CLEARLY MARKED WITH SIGNAGE NOTING DEVICE.



ABOVE GRADE WASHOUT STRUCTURE
NOT TO SCALE

- NOTES:**
1. ACTUAL LOCATION DETERMINED IN FIELD
 2. THE CONCRETE WASHOUT STRUCTURES SHALL BE MAINTAINED WHEN THE LIQUID AND/OR SOLID REACHES 75% OF THE STRUCTURES CAPACITY TO PROVIDE ADEQUATE HOLDING CAPACITY WITH A MINIMUM 12 INCHES OF FREEBOARD.
 3. CONCRETE WASHOUT STRUCTURE NEEDS TO BE CLEARLY MARKED WITH SIGNAGE NOTING DEVICE.

DIVISION OF HIGHWAYS
STATE OF NORTH CAROLINA

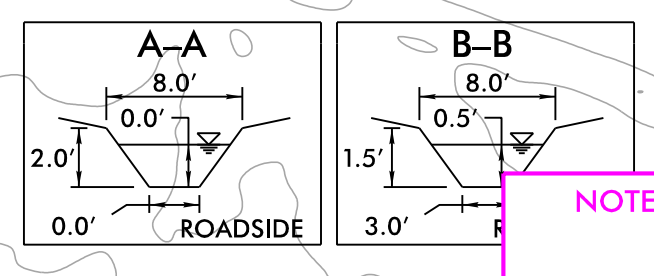
PROJECT REFERENCE NO. <i>HS-240IP</i>	SHEET NO. <i>EC-03A</i>
ROADWAY DESIGN ENGINEER	HYDRAULICS ENGINEER

SOIL STABILIZATION TIMEFRAMES

<i>SITE DESCRIPTION</i>	<i>STABILIZATION TIME</i>	<i>TIMEFRAME EXCEPTIONS</i>
PERIMETER DIKES, SWALES, DITCHES AND SLOPES	7 DAYS	NONE
HIGH QUALITY WATER (HQW) ZONES	7 DAYS	NONE
SLOPES STEEPER THAN 3:1	7 DAYS	IF SLOPES ARE 10' OR LESS IN LENGTH AND ARE NOT STEEPER THAN 2:1, 14 DAYS ARE ALLOWED.
SLOPES 3:1 TO 4:1	14 DAYS	7 DAYS FOR SLOPES GREATER THAN 50' IN LENGTH WITH SLOPES STEEPER THAN 4:1. 7 DAYS FOR PERIMETER DIKES, SWALES, DITCHES PERIMETER SLOPES, AND HQW ZONES
ALL OTHER AREAS WITH SLOPES FLATTER THAN 4:1	14 DAYS	7 DAYS FOR PERIMETER DIKES, SWALES, DITCHES PERIMETER SLOPES, AND HQW ZONES

5/14/99

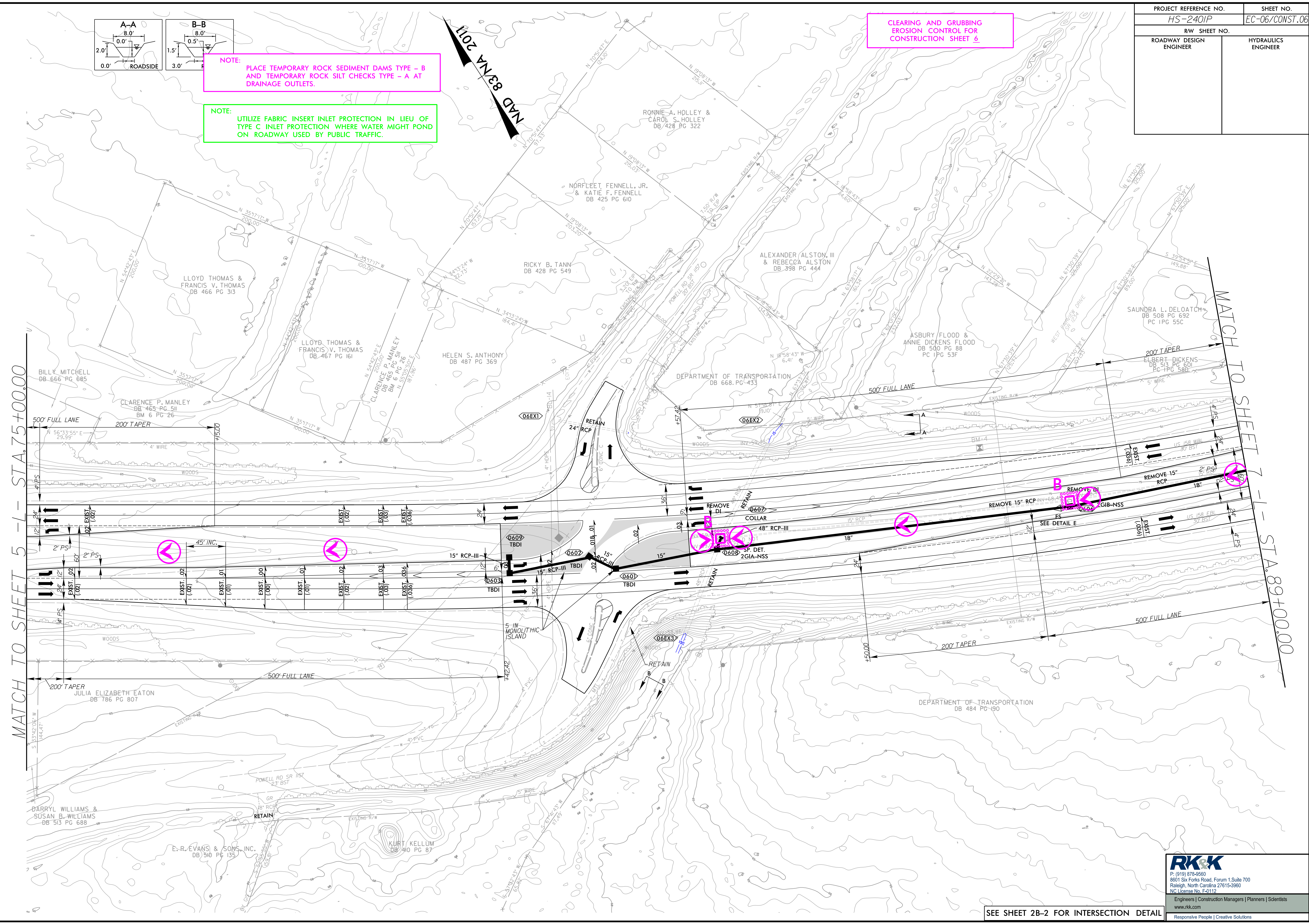
PROJECT REFERENCE NO.	SHEET NO.
HS-2401P	EC-06/CONST.06
RW SHEET NO.	
ROADWAY DESIGN ENGINEER	HYDRAULICS ENGINEER



NOTE: PLACE TEMPORARY ROCK SEDIMENT DAMS TYPE - B AND TEMPORARY ROCK SILT CHECKS TYPE - A AT DRAINAGE OUTLETS.

NOTE: UTILIZE FABRIC INSERT INLET PROTECTION IN LIEU OF TYPE C INLET PROTECTION WHERE WATER MIGHT POND ON ROADWAY USED BY PUBLIC TRAFFIC.

CLEARING AND GRUBBING EROSION CONTROL FOR CONSTRUCTION SHEET 6



MATCH TO SHEET 5 - L - STA. 75+00.00

MATCH TO SHEET 7 - STA. 89+00.00

3/27/2026
 C:\Users\CA001\OneDrive\Engineering\Projects\HS-2401P_EC_psh_06.dgn

RK&K
 P: (919) 878-0580
 8601 Six Forks Road, Forum 1, Suite 700
 Raleigh, North Carolina 27615-3960
 NC License No. F-0112
 Engineers | Construction Managers | Planners | Scientists
 www.rkk.com
 Responsive People | Creative Solutions

SEE SHEET 2B-2 FOR INTERSECTION DETAIL

PROJECT REFERENCE NO. HS-2401P	SHEET NO. EC-09/CONST.09
RW SHEET NO.	
ROADWAY DESIGN ENGINEER	HYDRAULICS ENGINEER

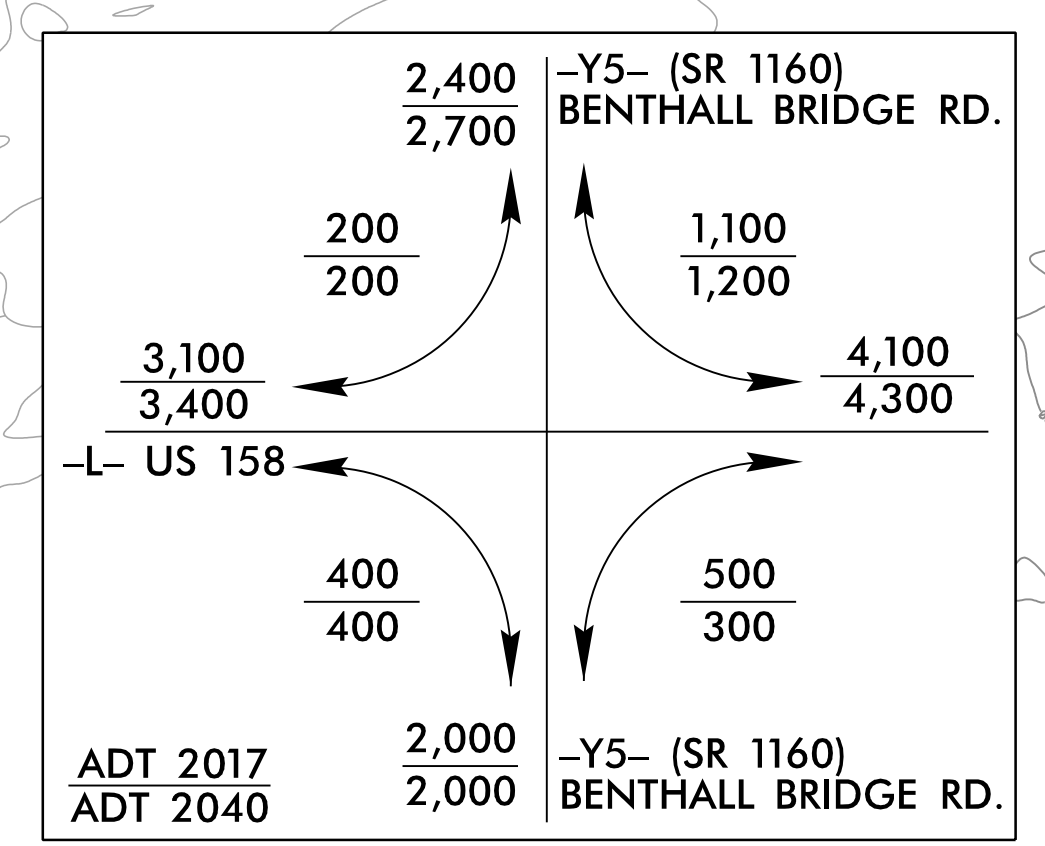
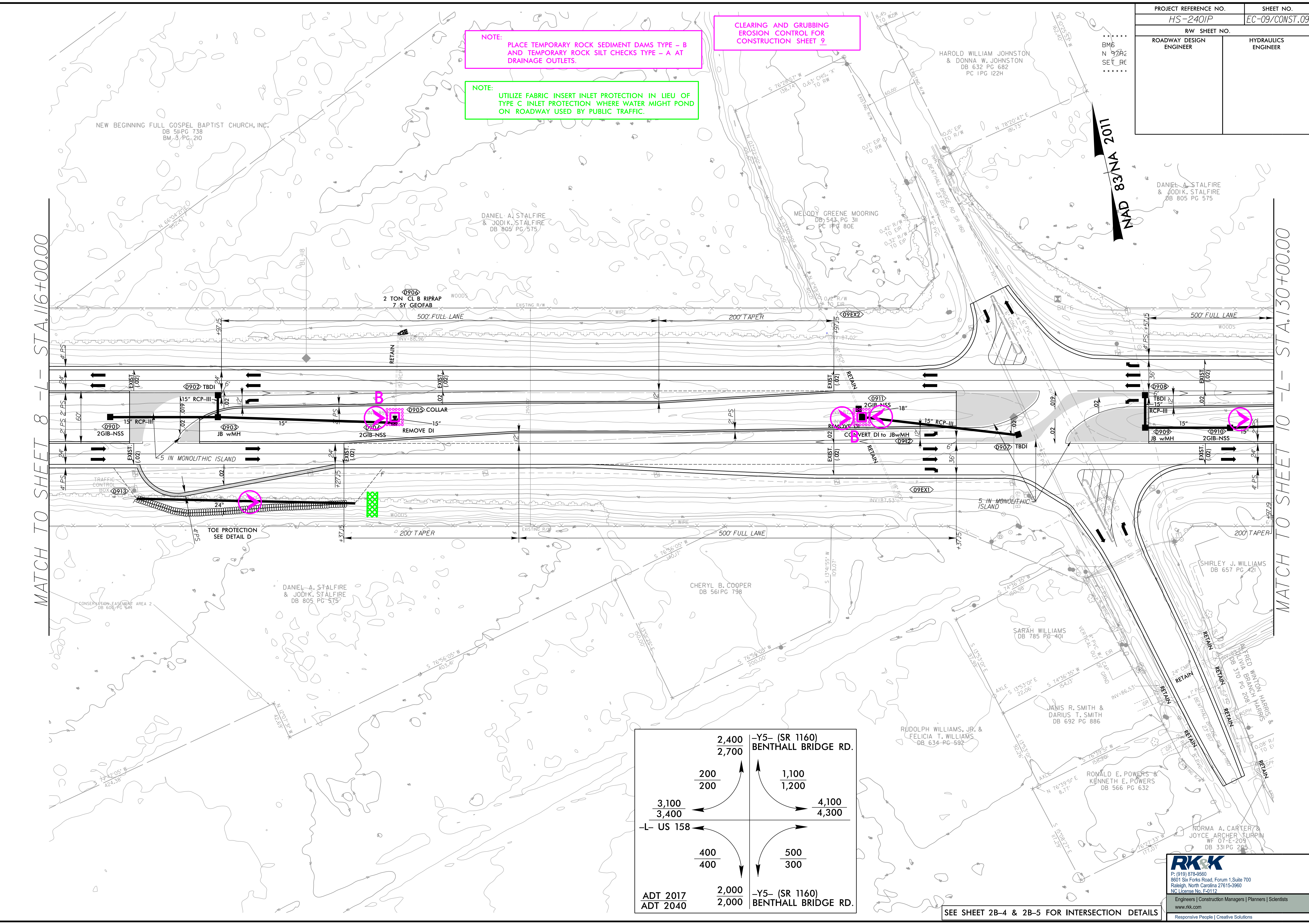
NOTE: PLACE TEMPORARY ROCK SEDIMENT DAMS TYPE - B AND TEMPORARY ROCK SILT CHECKS TYPE - A AT DRAINAGE OUTLETS.

CLEARING AND GRUBBING EROSION CONTROL FOR CONSTRUCTION SHEET 9

NOTE: UTILIZE FABRIC INSERT INLET PROTECTION IN LIEU OF TYPE C INLET PROTECTION WHERE WATER MIGHT POND ON ROADWAY USED BY PUBLIC TRAFFIC.

MATCH TO SHEET 8 - L - STA. 116+00.00

MATCH TO SHEET 10 - L - STA. 130+00.00



SEE SHEET 2B-4 & 2B-5 FOR INTERSECTION DETAILS

RK&K
 P: (919) 878-9580
 8601 Six Forks Road, Forum 1, Suite 700
 Raleigh, North Carolina 27615-3960
 NC License No. F-0112
 Engineers | Construction Managers | Planners | Scientists
 www.rkk.com
 Responsive People | Creative Solutions

5/14/2009
 C:\DOT\ees\160114\2009\Design\Hydr-a\res\CADD\PSH\EC-09.dgn
 14:52:08
 14:52:08
 14:52:08

PROJECT REFERENCE NO.	SHEET NO.
HS-240IP	EC-10/CONST.10
RW SHEET NO.	
ROADWAY DESIGN ENGINEER	HYDRAULICS ENGINEER

NOTE: PLACE TEMPORARY ROCK SEDIMENT DAMS TYPE - B AND TEMPORARY ROCK SILT CHECKS TYPE - A AT DRAINAGE OUTLETS.

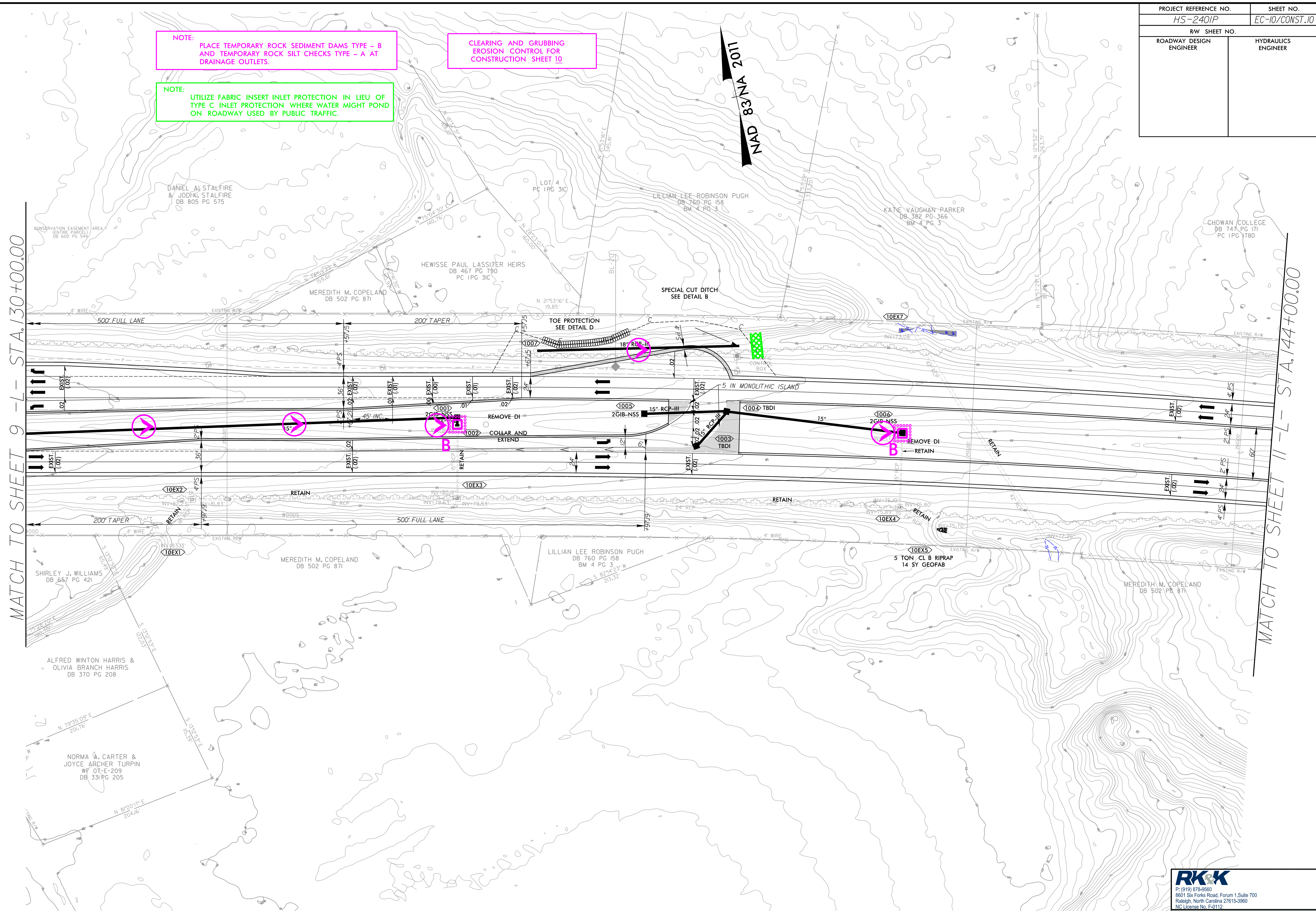
CLEARING AND GRUBBING EROSION CONTROL FOR CONSTRUCTION SHEET 10

NOTE: UTILIZE FABRIC INSERT INLET PROTECTION IN LIEU OF TYPE C INLET PROTECTION WHERE WATER MIGHT POND ON ROADWAY USED BY PUBLIC TRAFFIC.

NAD 83/NA 2011

MATCH TO SHEET 9 - L - STA. 130+00.00

MATCH TO SHEET 11 - L - STA. 144+00.00



SEE SHEET 2D-1 FOR DITCH DETAILS AND DITCH GRADES
SEE SHEET 2B-5 FOR INTERSECTION DETAIL

RK&K
 P: (919) 878-9560
 8601 Six Forks Road, Forum 1, Suite 700
 Raleigh, North Carolina 27615-3960
 NC License No. F-0112
 Engineers | Construction Managers | Planners | Scientists
 www.rkk.com
 Responsive People | Creative Solutions

5/14/99
 C:\DOTEast\10014\2022\01\14\240IP-US158\Design\Hydraulics\CADD\PSH\Er-ston Contr-ol\HS-240IP-EC-psk-10.dgn

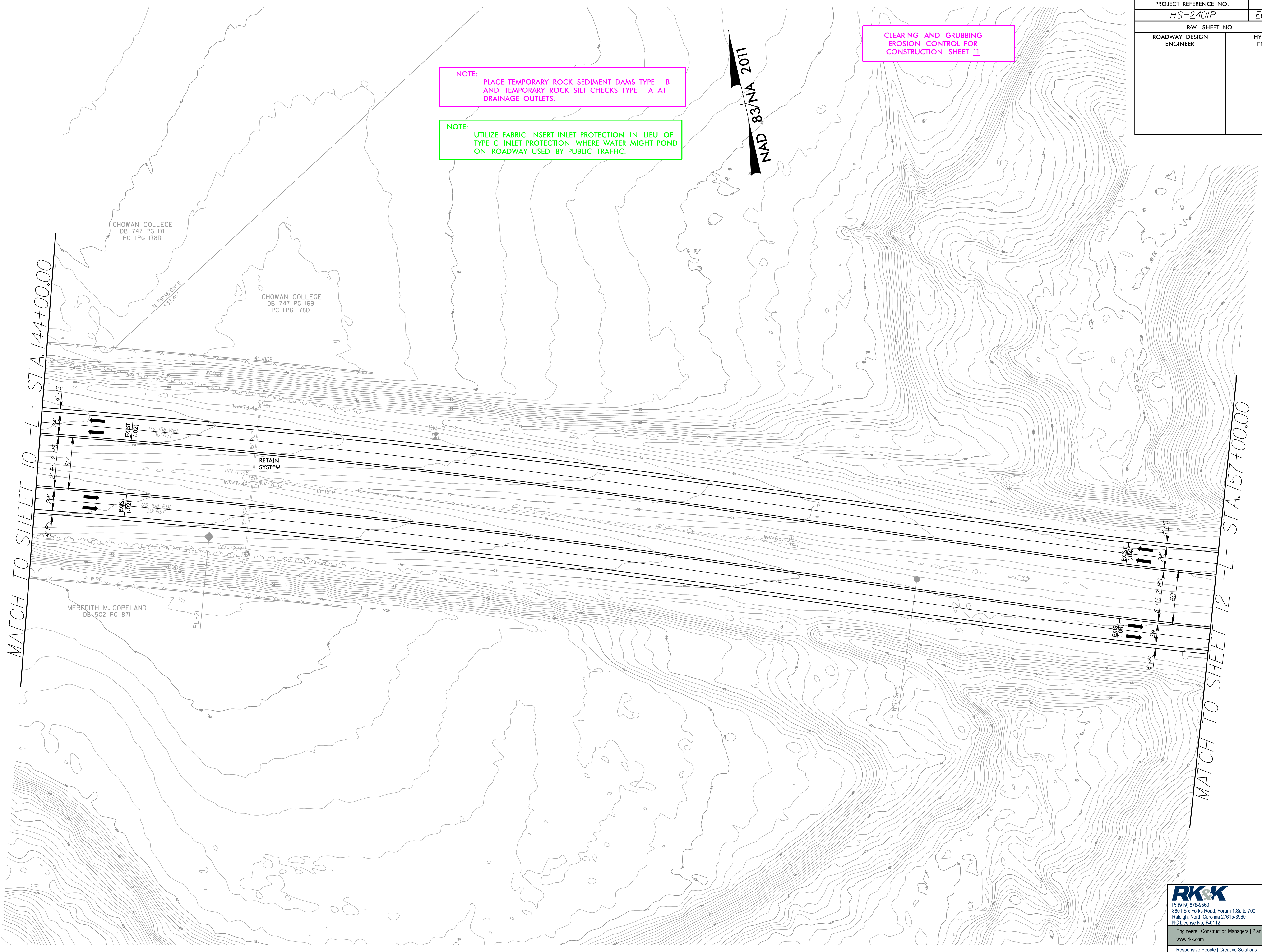
PROJECT REFERENCE NO. HS-2401P	SHEET NO. EC-II/CONST.11
RW SHEET NO.	
ROADWAY DESIGN ENGINEER	HYDRAULICS ENGINEER

CLEARING AND GRUBBING
EROSION CONTROL FOR
CONSTRUCTION SHEET 11

NOTE:
PLACE TEMPORARY ROCK SEDIMENT DAMS TYPE - B
AND TEMPORARY SILT CHECKS TYPE - A AT
DRAINAGE OUTLETS.

NOTE:
UTILIZE FABRIC INSERT INLET PROTECTION IN LIEU OF
TYPE C INLET PROTECTION WHERE WATER MIGHT POND
ON ROADWAY USED BY PUBLIC TRAFFIC.

NAD 83/NA 2011



MATCH TO SHEET 10 - L - STA 144+00.00

MATCH TO SHEET 12 - L - STA 157+00.00

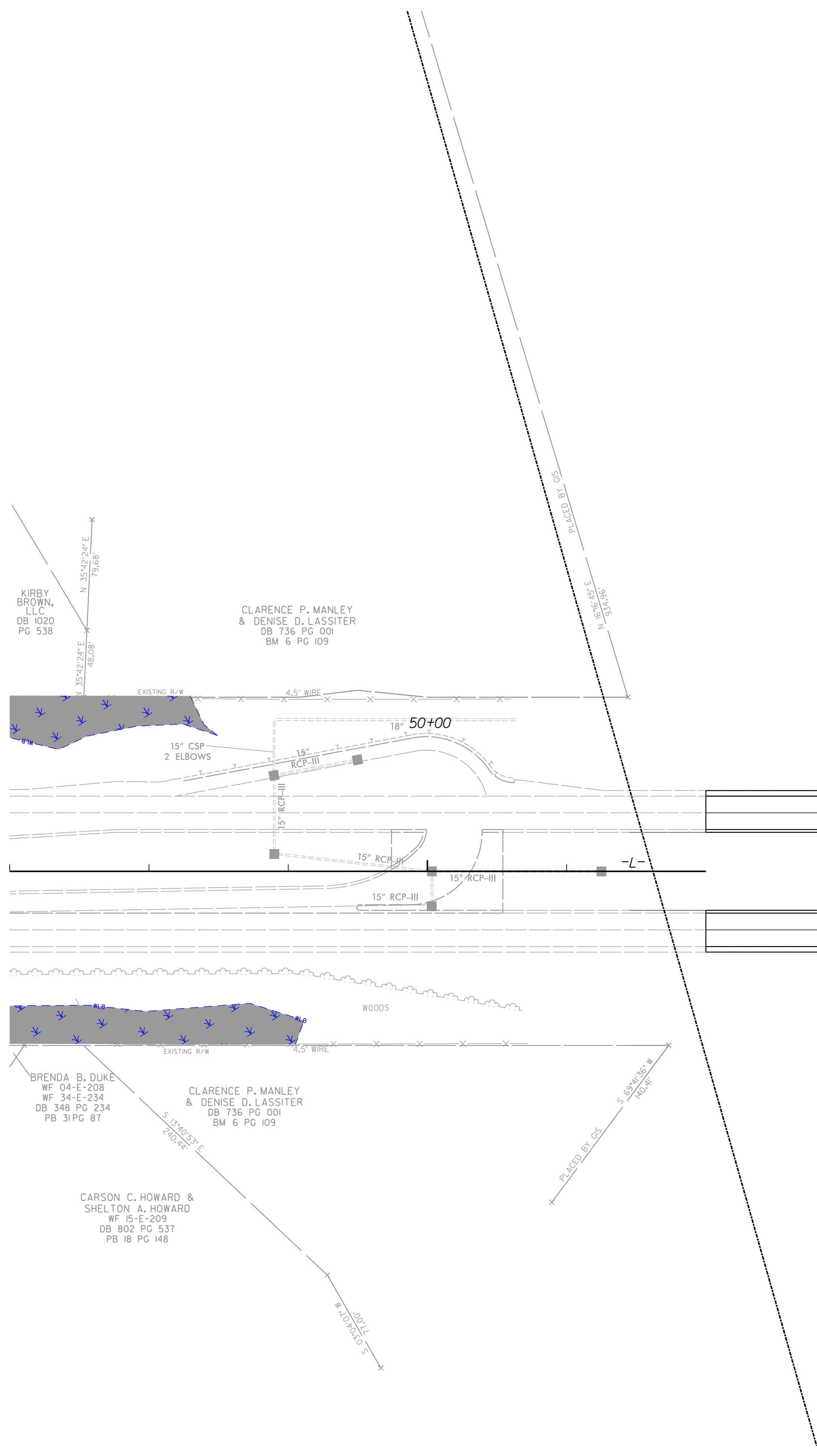
CHOWAN COLLEGE
DB 747 PG 171
PC 1PG 178D

CHOWAN COLLEGE
DB 747 PG 169
PC 1PG 178D

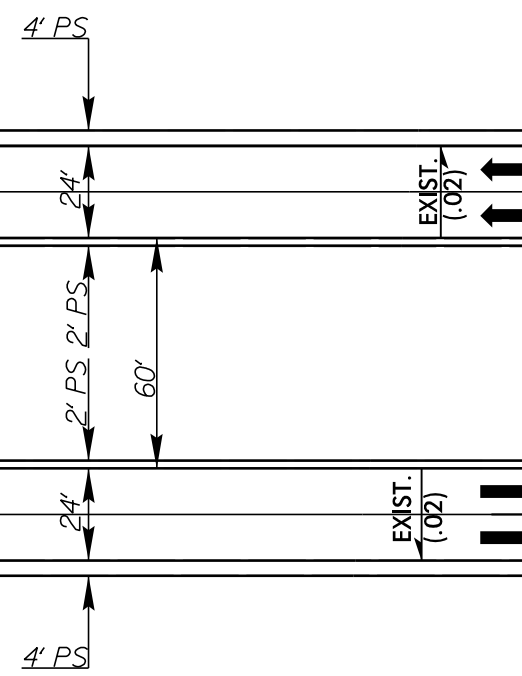
MEREDITH M. COPELAND
DB 502 PG 871

PROJECT REFERENCE NO.	SHEET NO.
HS-240IP	EC-13/CONST.04
RW SHEET NO.	
ROADWAY DESIGN ENGINEER	HYDRAULICS ENGINEER

NAD 83/NA 2011



MATCH TO SHEET 5 -L- STA. 61+00.00

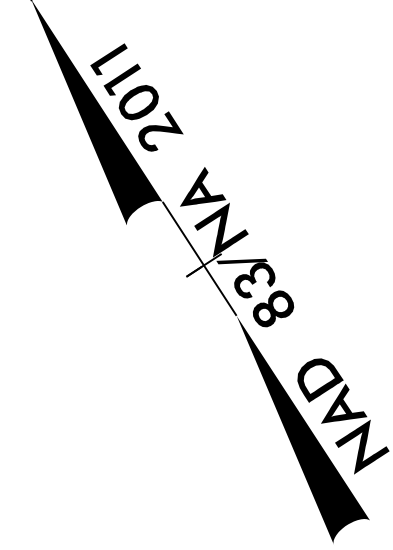


RK&K
 P: (919) 878-9560
 8601 Six Forks Road, Forum 1, Suite 700
 Raleigh, North Carolina 27615-3960
 NC License No. F-0112
 Engineers | Construction Managers | Planners | Scientists
 www.rkk.com
 Responsive People | Creative Solutions

5/14/99
 C:\DOT\East\10\14\2025\14\15\158\Design\Hydraulics\CADD\PSH\Eroston Control\HS-240IP_EC_psh_13.dgn
 10/24/2025
 11:00:11 AM

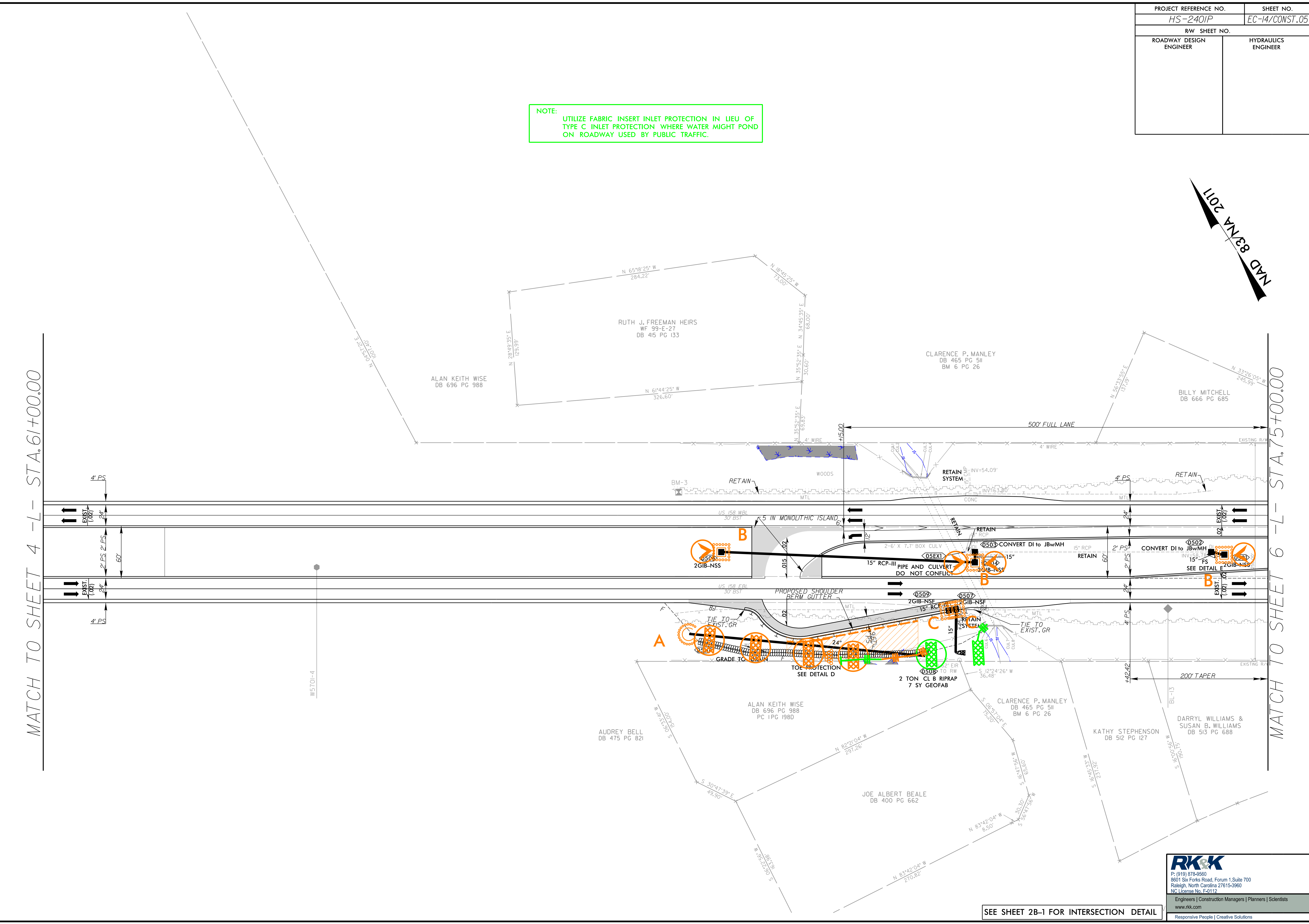
PROJECT REFERENCE NO.		SHEET NO.	
HS-240IP		EC-14/CONST.05	
RW SHEET NO.			
ROADWAY DESIGN ENGINEER		HYDRAULICS ENGINEER	

NOTE: UTILIZE FABRIC INSERT INLET PROTECTION IN LIEU OF TYPE C INLET PROTECTION WHERE WATER MIGHT POND ON ROADWAY USED BY PUBLIC TRAFFIC.



MATCH TO SHEET 4 -L- STA. 61+00.00

MATCH TO SHEET 6 -L- STA. 75+00.00

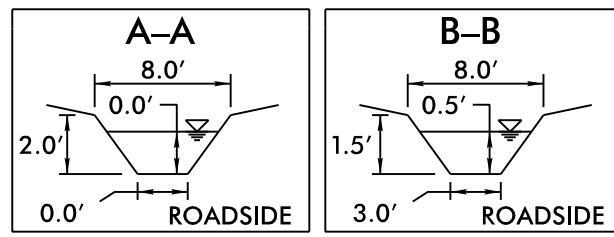


SEE SHEET 2B-1 FOR INTERSECTION DETAIL

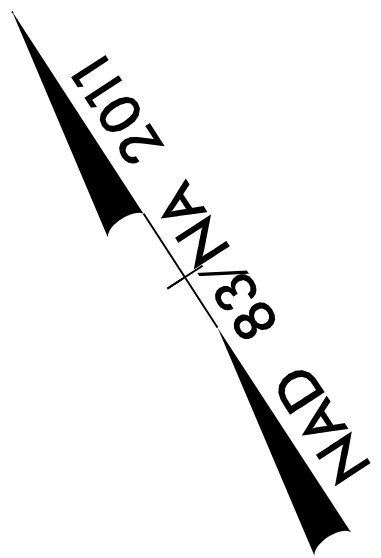
RK&K
 P: (919) 878-9560
 8601 Six Forks Road, Forum 1, Suite 700
 Raleigh, North Carolina 27615-3960
 NC License No. F-0112
 Engineers | Construction Managers | Planners | Scientists
 www.rkk.com
 Responsive People | Creative Solutions

5/14/99
 C:\DOT\East\14\2025\14-240IP-US158\Design\Hydraulics\CADD\PSH\Veroston_Control\HS-240IP_EC_psh_L14.dgn

PROJECT REFERENCE NO.	SHEET NO.
HS-2401P	EC-15/CONST.06
RW SHEET NO.	
ROADWAY DESIGN ENGINEER	HYDRAULICS ENGINEER

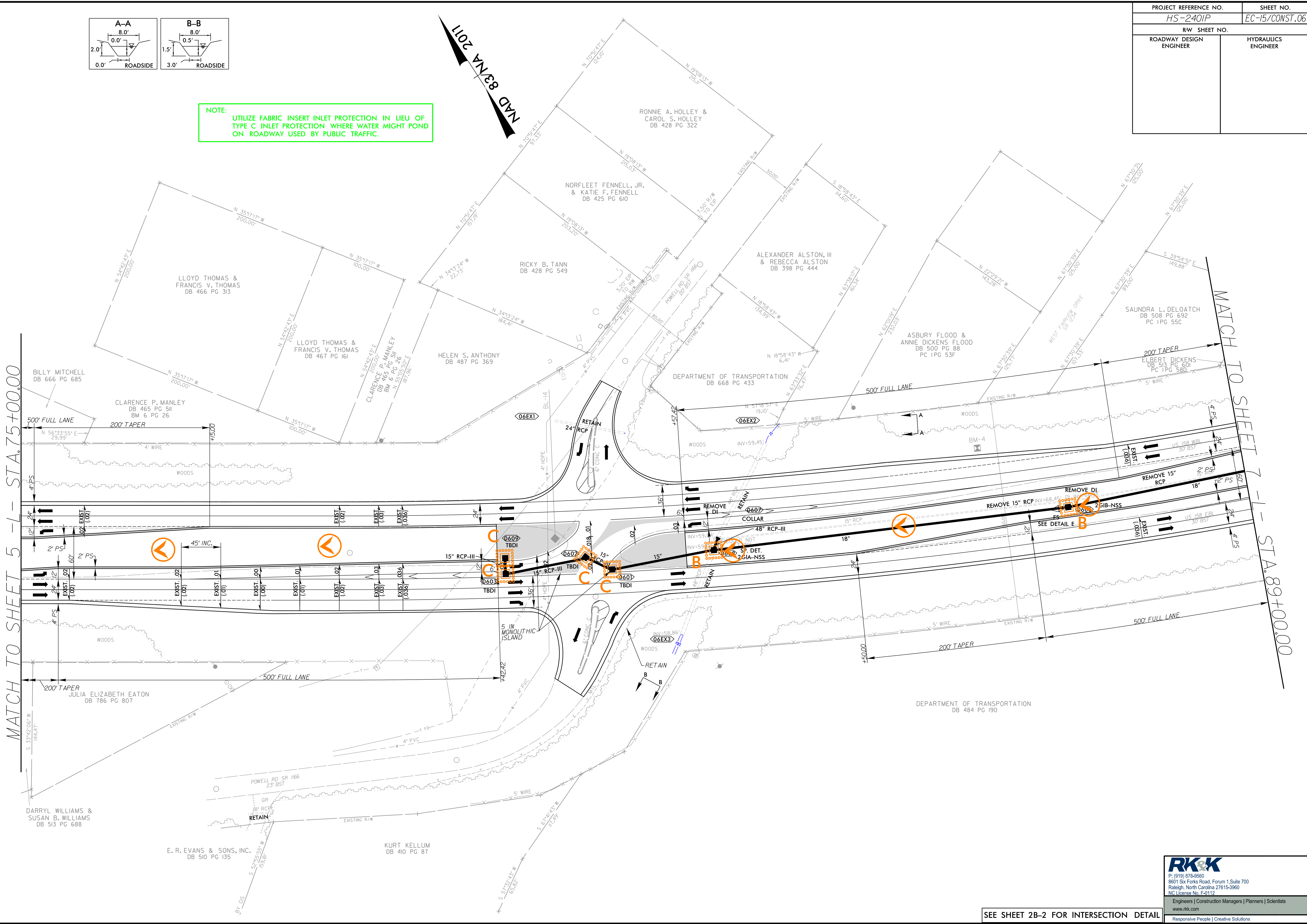


NOTE: UTILIZE FABRIC INSERT INLET PROTECTION IN LIEU OF TYPE C INLET PROTECTION WHERE WATER MIGHT POND ON ROADWAY USED BY PUBLIC TRAFFIC.



MATCH TO SHEET 5-L- STA. 75+00.00

MATCH TO SHEET 7- STA. 89+00.00



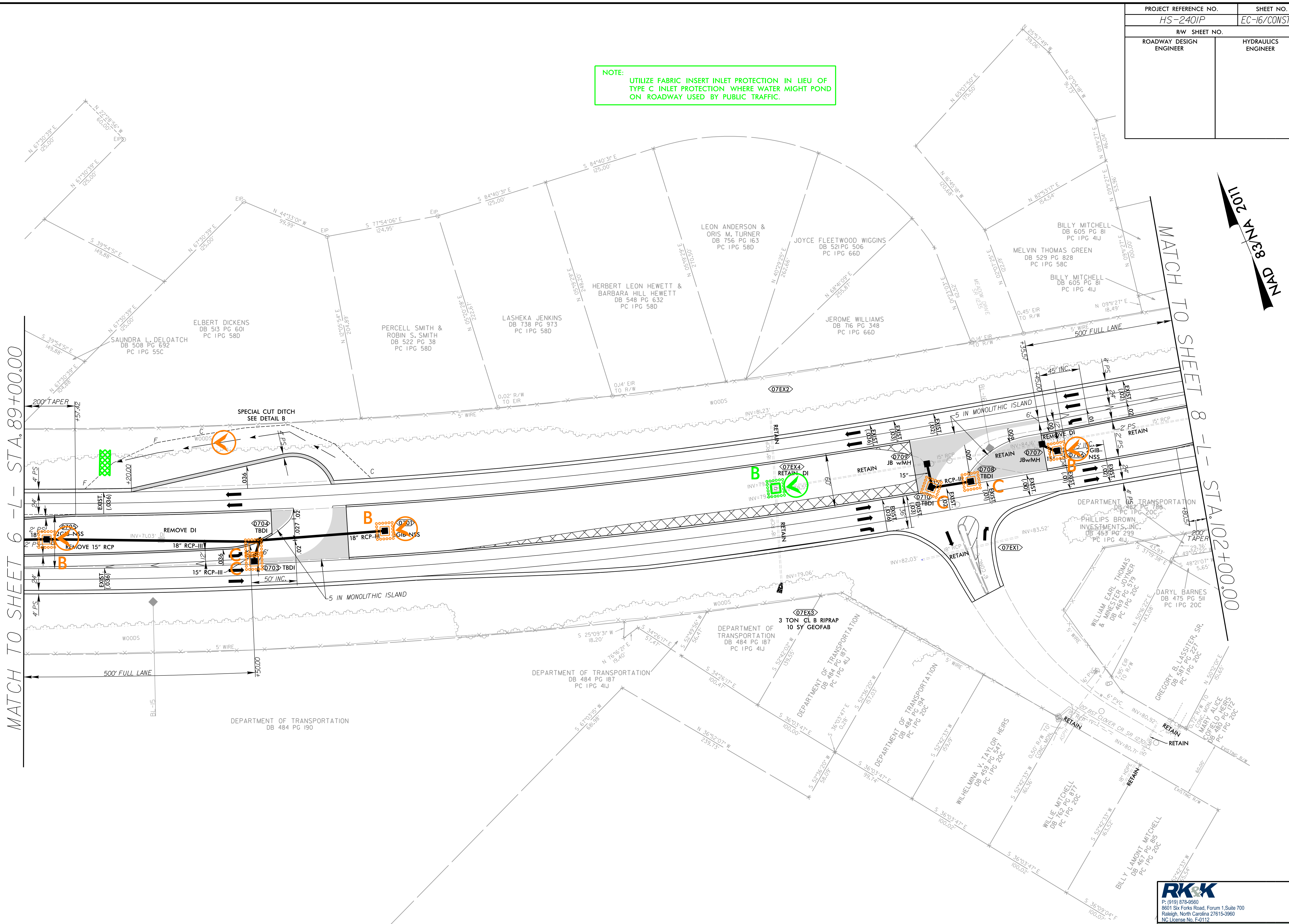
5/14/99
C:\DOT\East\10\14\202501\Design\US158\Hydraulics\CADD\PSH\E-roston Control\HS-2401P-EC-psht-15.dgn

RK&K
 P: (919) 878-9560
 8601 Six Forks Road, Forum 1, Suite 700
 Raleigh, North Carolina 27615-3960
 NC License No. F-0112
 Engineers | Construction Managers | Planners | Scientists
 www.rkk.com
 Responsive People | Creative Solutions

SEE SHEET 2B-2 FOR INTERSECTION DETAIL

PROJECT REFERENCE NO.	SHEET NO.
HS-240IP	EC-16/CONST.07
RW SHEET NO.	
ROADWAY DESIGN ENGINEER	HYDRAULICS ENGINEER

NOTE:
UTILIZE FABRIC INSERT INLET PROTECTION IN LIEU OF TYPE C INLET PROTECTION WHERE WATER MIGHT POND ON ROADWAY USED BY PUBLIC TRAFFIC.



MATCH TO SHEET 6 - L - STA. 89+00.00

MATCH TO SHEET 8 - I - STA. 102+00.00

MAD 8/24/2011

REMOVAL OF EXISTING ASPHALT PAVEMENT

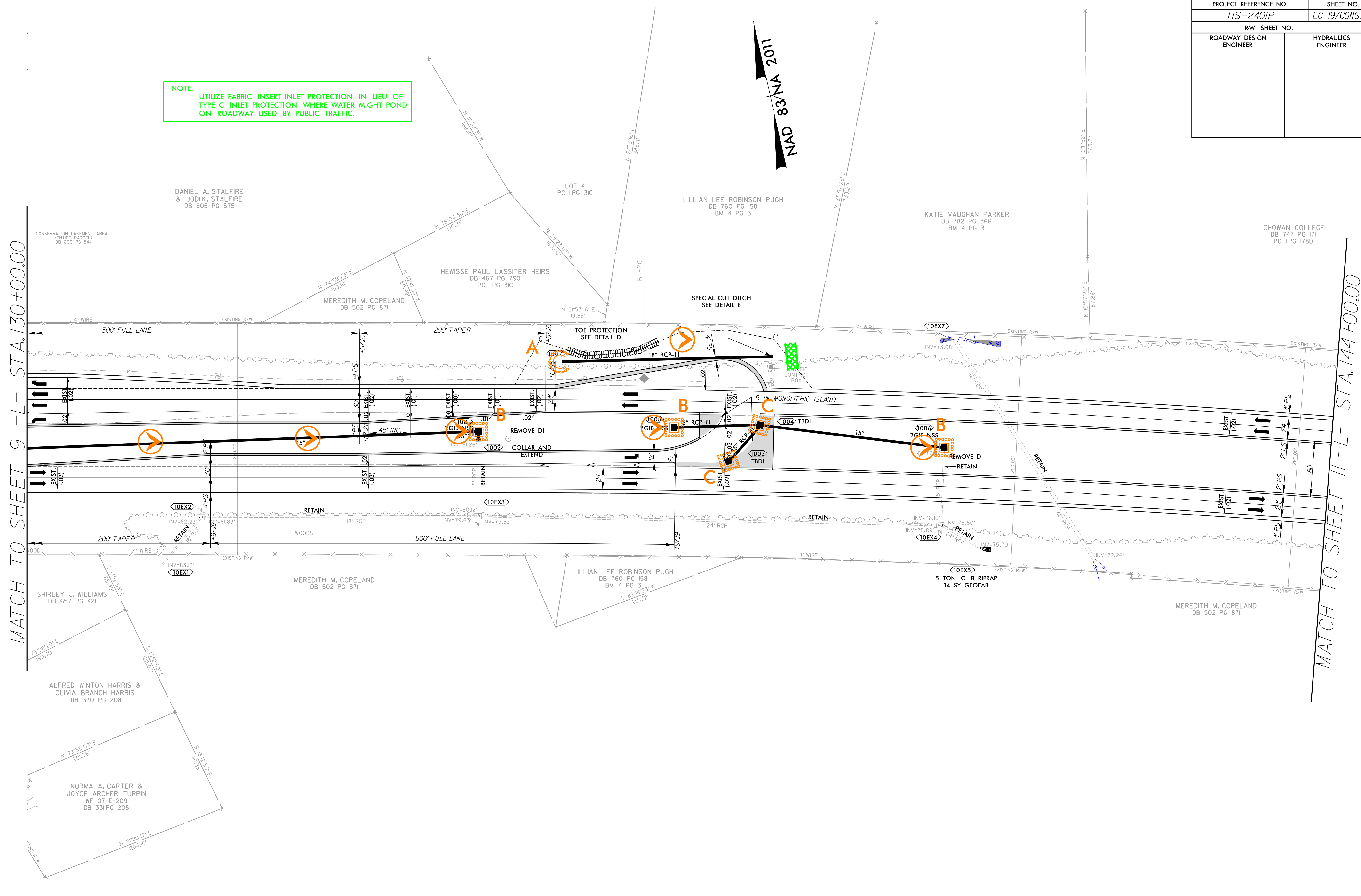
SEE SHEET 2D-1 FOR DITCH DETAILS AND DITCH GRADES
SEE SHEET 2B-2 & 2B-3 FOR INTERSECTION DETAIL

RK&K
P: (919) 878-9560
8601 Six Forks Road, Forum 1, Suite 700
Raleigh, North Carolina 27615-3960
NC License No. F-0112
Engineers | Construction Managers | Planners | Scientists
www.rkk.com
Responsive People | Creative Solutions

S:\14\99\DOTEast\14\2026\14\2401P_US158\Design\Hydraulics\CADD\PSH\Ver-easton Control\HS-240IP_EC_psh_16.dgn
 5/14/99
 14/2401P_US158

PROJECT REFERENCE NO.	SHEET NO.
HS-240IP	EC-19/CONST.10
RW SHEET NO.	
ROADWAY DESIGN ENGINEER	HYDRAULICS ENGINEER

NOTE:
UTILIZE FABRIC INSERT INLET PROTECTION IN LIEU OF TYPE C INLET PROTECTION WHERE WATER MIGHT POND ON ROADWAY USED BY PUBLIC TRAFFIC.



MATCH TO SHEET 9 - L - STA. 130+00.00

MATCH TO SHEET 11 - L - STA. 144+00.00

NAD 83/NA 2011

5/14/99
C:\DOT\East\10014\2022\1452401P_US158\Design\Hydraulics\CADD\PSH\Eroston_Contr-ol\HS-240IP_EC_psh_19.dgn

SEE SHEET 2D-1 FOR DITCH DETAILS AND DITCH GRADES
SEE SHEET 2B-5 FOR INTERSECTION DETAIL

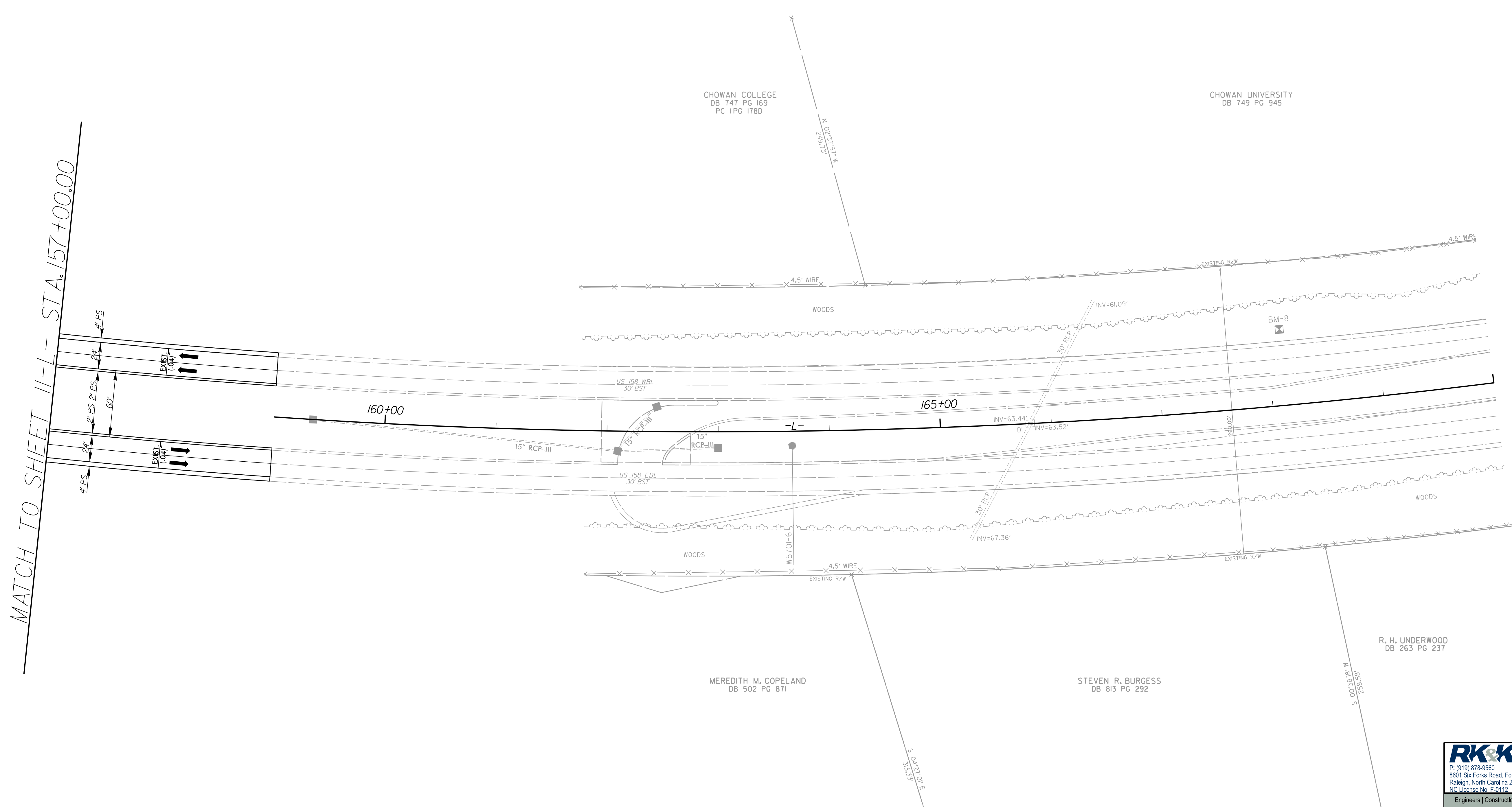
RK&K
 P: (919) 878-9560
 8601 Six Forks Road, Forum 1, Suite 700
 Raleigh, North Carolina 27615-3960
 NC License No. F-0112
 Engineers | Construction Managers | Planners | Scientists
 www.rkk.com
 Responsive People | Creative Solutions

PROJECT REFERENCE NO.	SHEET NO.
HS-240IP	EC-21/CONST.12
RW SHEET NO.	
ROADWAY DESIGN ENGINEER	HYDRAULICS ENGINEER

5/14/99
 C:\DOT\East\RD\14\2026\01\14\2026\01\US158\Design\Hydraulics\CADD\PSH\Eroston_Control\HS-240IP_EC_psh_21.dgn
 C:\DOT\East\RD\14\2026\01\14\2026\01\US158\Design\Hydraulics\CADD\PSH\Eroston_Control\HS-240IP_EC_psh_21.dgn

MATCH TO SHEET II-L- STA. 157+00.00

NAD 83/NA 2011



CHOWAN COLLEGE
DB 747 PG 169
PC 1PG 178D

CHOWAN UNIVERSITY
DB 749 PG 945

MEREDITH M. COPELAND
DB 502 PG 871

STEVEN R. BURGESS
DB 813 PG 292

R. H. UNDERWOOD
DB 263 PG 237

RK&K
 P: (919) 878-9560
 8601 Six Forks Road, Forum 1, Suite 700
 Raleigh, North Carolina 27615-3960
 NC License No. F-0112
 Engineers | Construction Managers | Planners | Scientists
 www.rkk.com
 Responsive People | Creative Solutions