

STATE	STATE PROJECT REFERENCE NO.	SHEET NO.	TOTAL SHEETS
N.C.	HS-2401P	RW01	8

STATE OF NORTH CAROLINA  
DIVISION OF HIGHWAYS

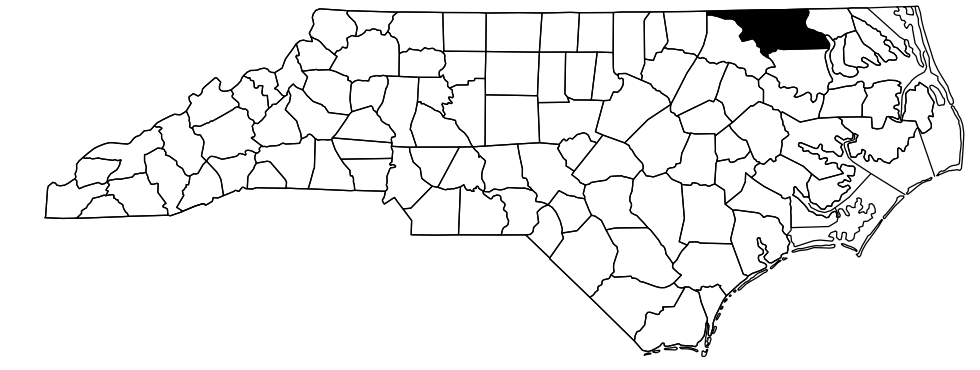
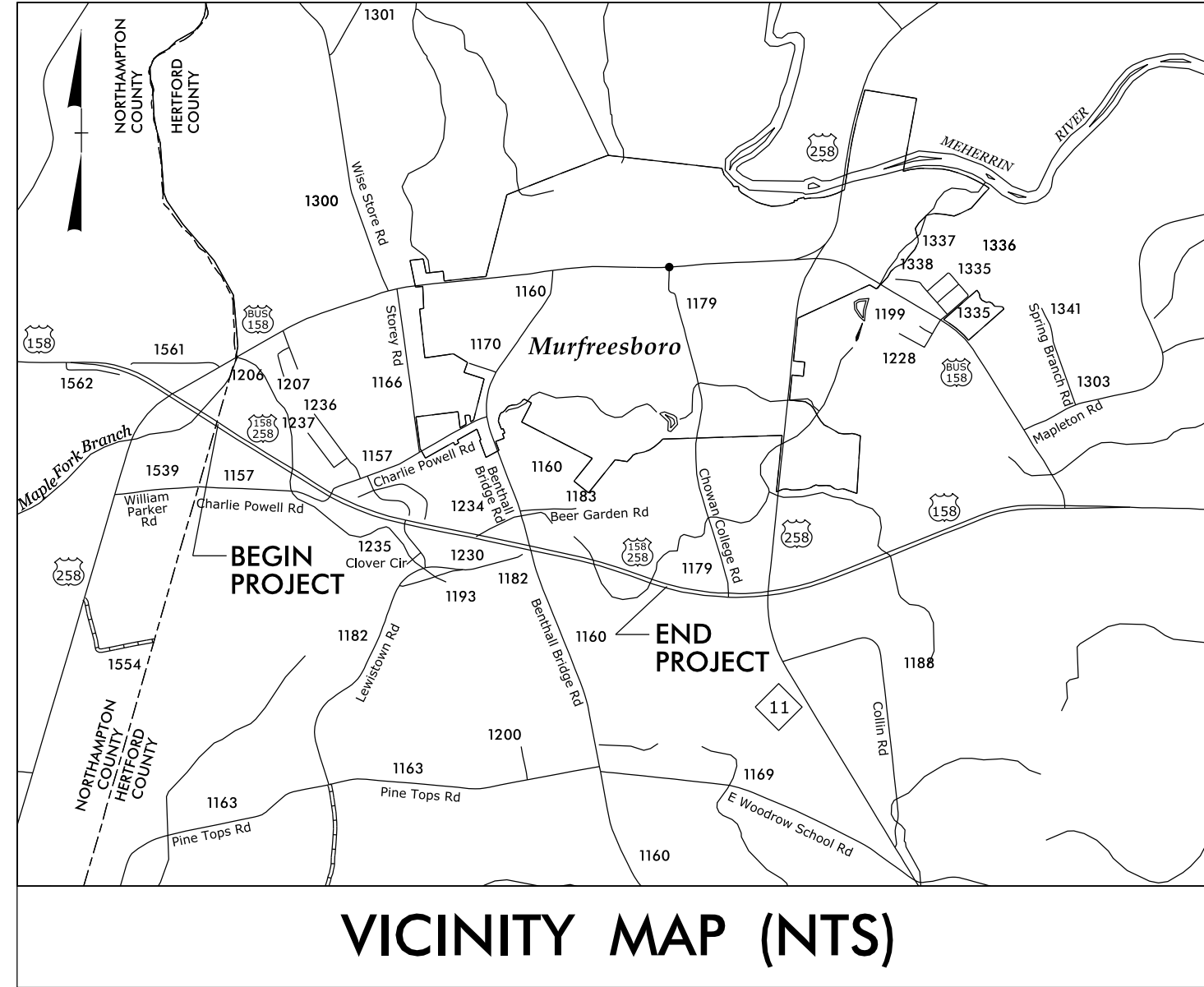
---

SURVEY CONTROL, EXISTING CENTERLINES,  
RIGHT OF WAY, EASEMENTS AND PROPERTY TIES

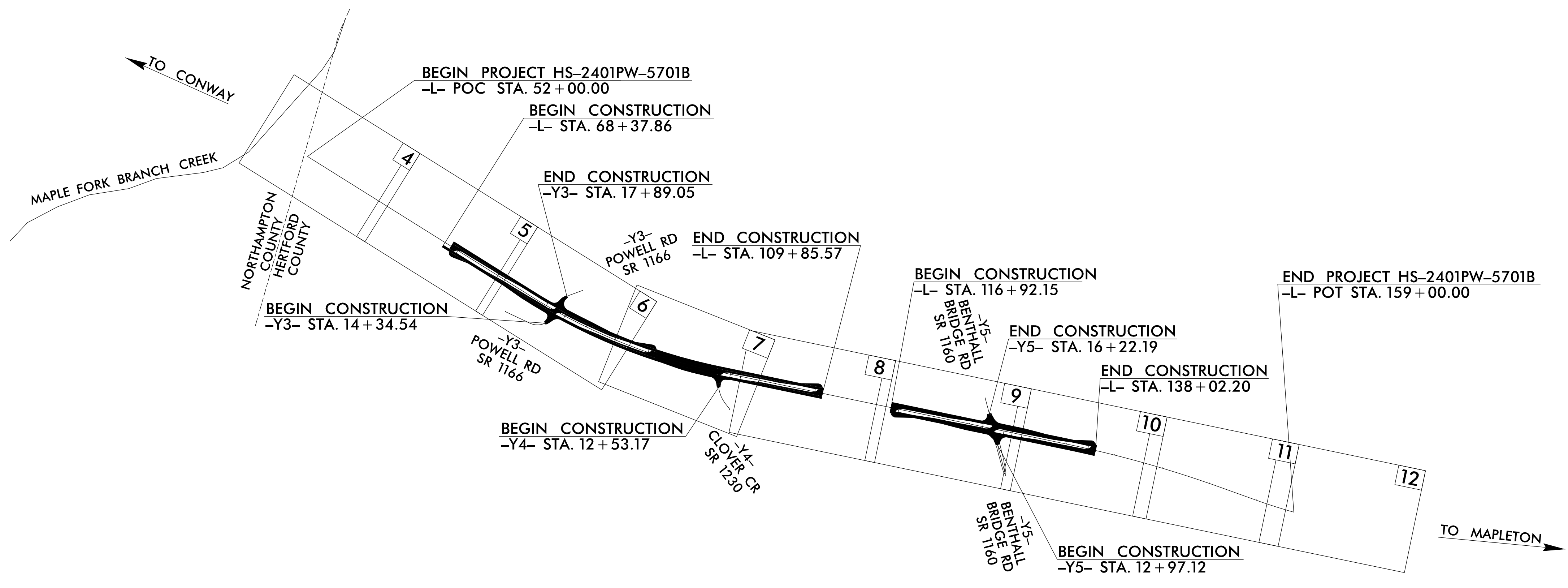
---

## HERTFORD COUNTY

---



NAD 83/NA 2011



**TIP PROJECT: HS-2401P**

13-FEB-2026 13:25 R:\B-Jobs\T-Division\Projects\HertfordCo\W-5701B\CONTROL\CONTROL SHEETS\RW\_and\_TSH\HS-2401P\_Rdy.-tsh.dgn

**DATUM DESCRIPTION**

THE LOCALIZED COORDINATE SYSTEM DEVELOPED FOR THIS PROJECT IS BASED ON THE STATE PLANE COORDINATES ESTABLISHED BY NCDOT FOR MONUMENT "W5701-5" WITH NAD 83/2011 STATE PLANE GRID COORDINATES OF NORTHING: 978,372.512(ft) EASTING: 2,558,654.028(ft) ELEVATION: 72.984(ft)

THE AVERAGE COMBINED GRID FACTOR USED ON THIS PROJECT (GROUND TO GRID) IS: 1.000083764

THE N.C. LAMBERT GRID BEARING AND LOCALIZED HORIZONTAL GROUND DISTANCE FROM "W5701-5" TO -L- STATION 52+00.00 IS N 68°59'14.06" W 10,060.82(ft)

ALL LINEAR DIMENSIONS ARE LOCALIZED HORIZONTAL DISTANCES VERTICAL DATUM USED IS NAVD 88

Prepared in the Office of:

LOCATION & SURVEYS  
DIVISION 1  
1300 US HWY 64 WEST  
PLYMOUTH, NC 27962

**RIGHT OF WAY DATE:**  
N/A

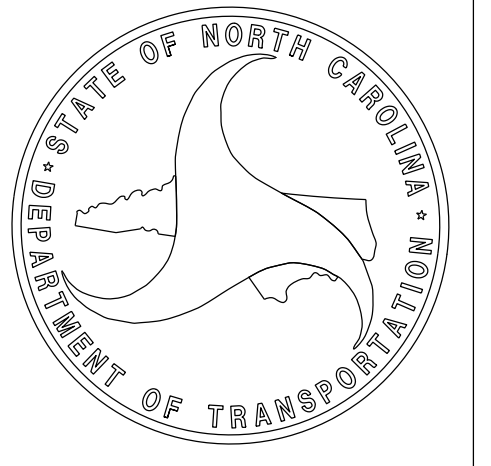
**LETTING DATE:**  
May 19, 2026

**PROFESSIONAL LAND SURVEYOR**



DocuSigned by:  
*Linwood T. Downs III*  
SIGNATURE

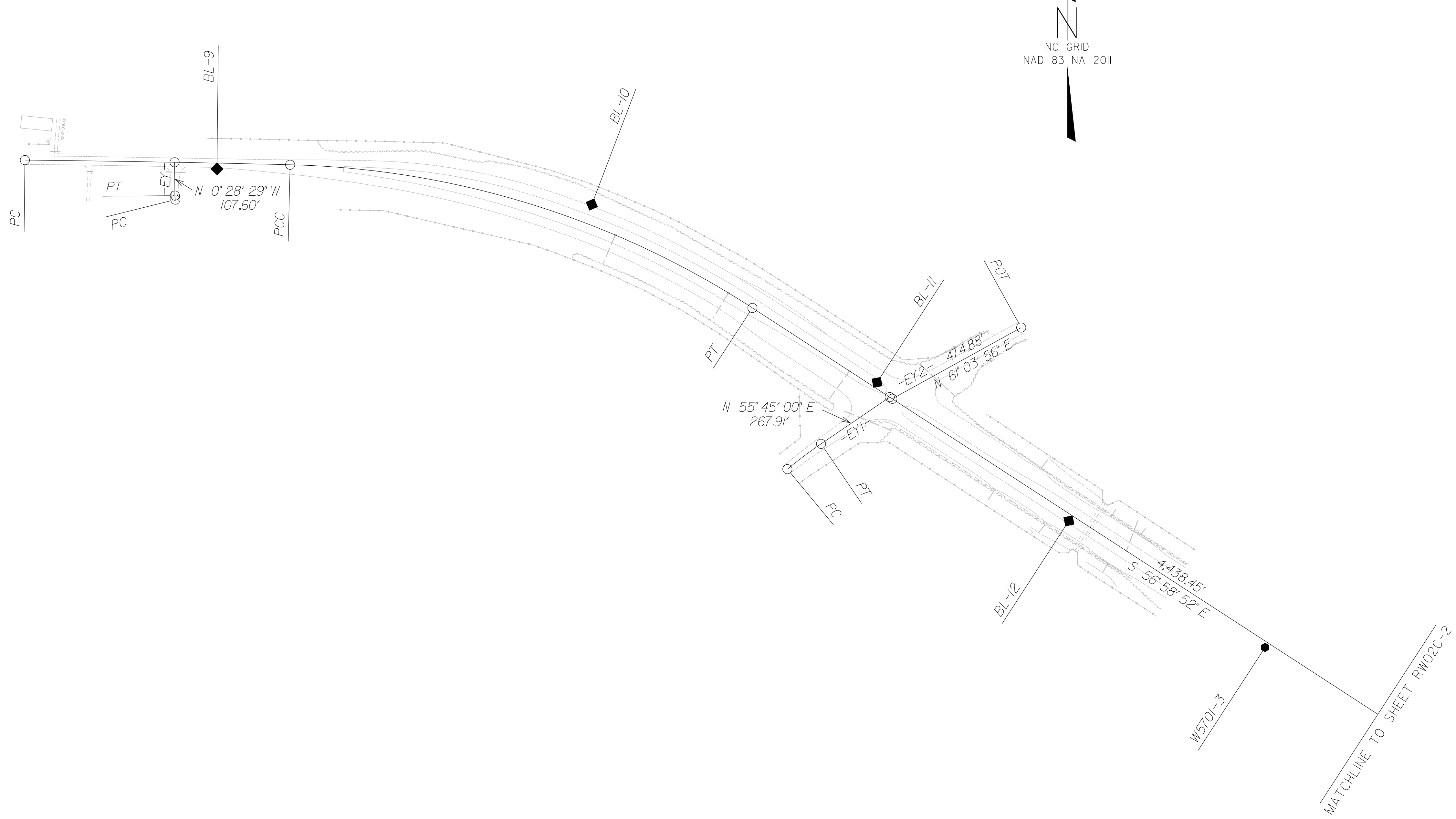
02/13/2026  
Date:



PROJECT REFERENCE NO.	SHEET NO.
HS-2401P	RW02C-1
<b>Location and Surveys</b>	
Johnson, Mirmiran & Thompson, Inc. 9201 Arboretum Parkway, Suite 310 Richmond, VA 23236	

# SURVEY CONTROL SHEET

## W/ EXISTING CENTERLINE ALIGNMENTS PRIOR TO CONSTRUCTION



SEE SHEET RW02C-6  
FOR FURTHER  
ALIGNMENT DETAILS

### NOTES:

1. PROJECT CONTROL WAS ESTABLISHED USING GNSS, THE GLOBAL NAVIGATION SATELLITE SYSTEM.
2. THE SURVEY CONTROL DATA FOR THIS PROJECT HAS BEEN COMPILED FROM VARIOUS SOURCES. IF FURTHER INFORMATION REGARDING PROJECT CONTROL IS NEEDED, PLEASE CONTACT THE LOCATION AND SURVEYS UNIT.

REVISIONS

26-SEP-2025 14:48  
R:\B\_Jobs\Drawings\Projects\HertfordCo\W-5701B\CONTROL\CONTROL SHEETS\190610\W5701B\_1s\_rw02c-1.dgn  
1tdowns AT LS-345772L

W5701-1

W5701-2

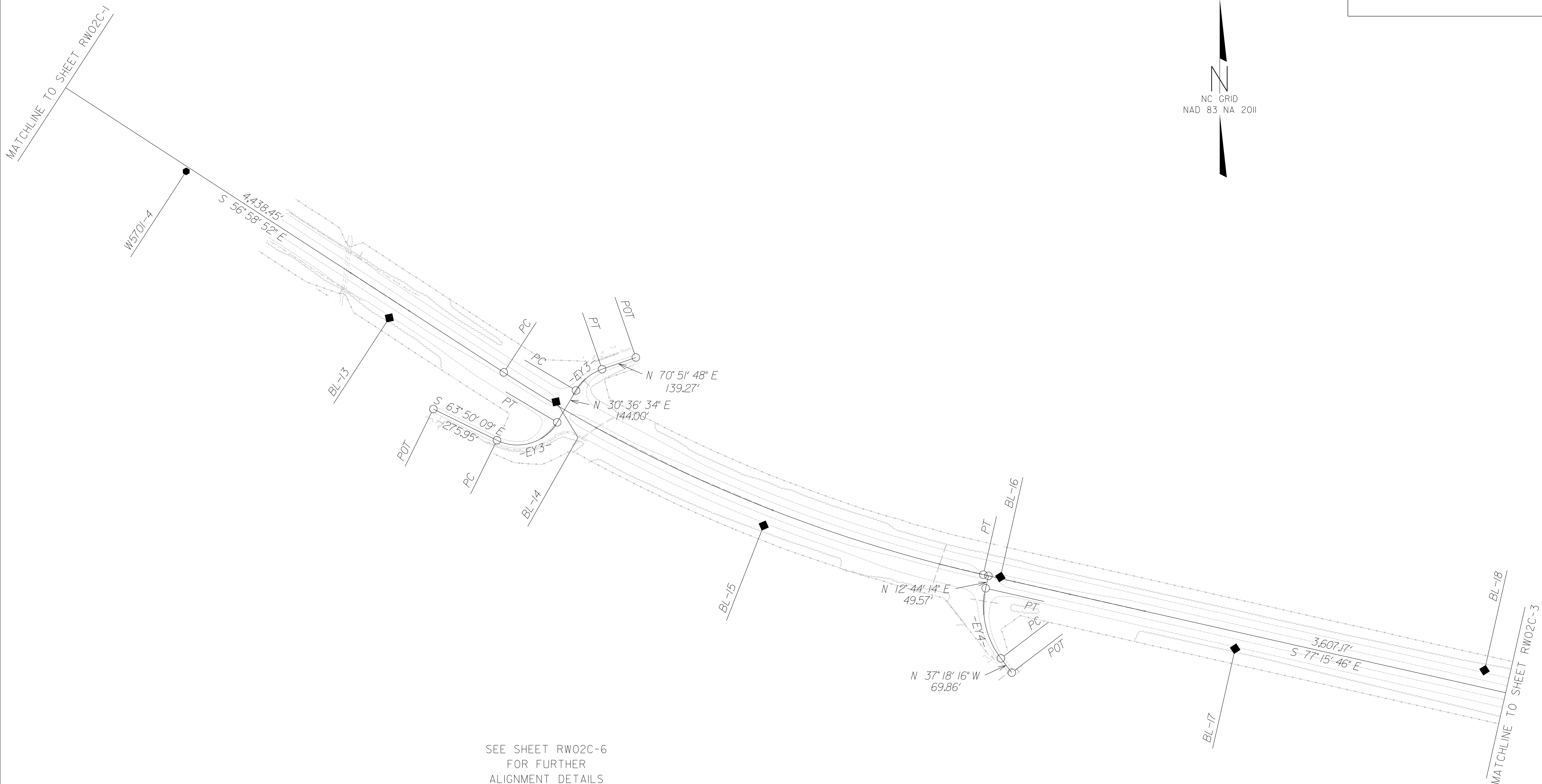
W5701-3

MATCHLINE TO SHEET RW02C-2

PROJECT REFERENCE NO.	SHEET NO.
16-5701B	RW02C-2
<b>Location and Surveys</b>	
Johnson, Mirmiran & Thompson, Inc. 9201 Arboretum Parkway, Suite 310 Richmond, VA 23236	

# SURVEY CONTROL SHEET

## W/ EXISTING CENTERLINE ALIGNMENTS PRIOR TO CONSTRUCTION



REVISIONS

SEE SHEET RW02C-6 FOR FURTHER ALIGNMENT DETAILS

### NOTES:

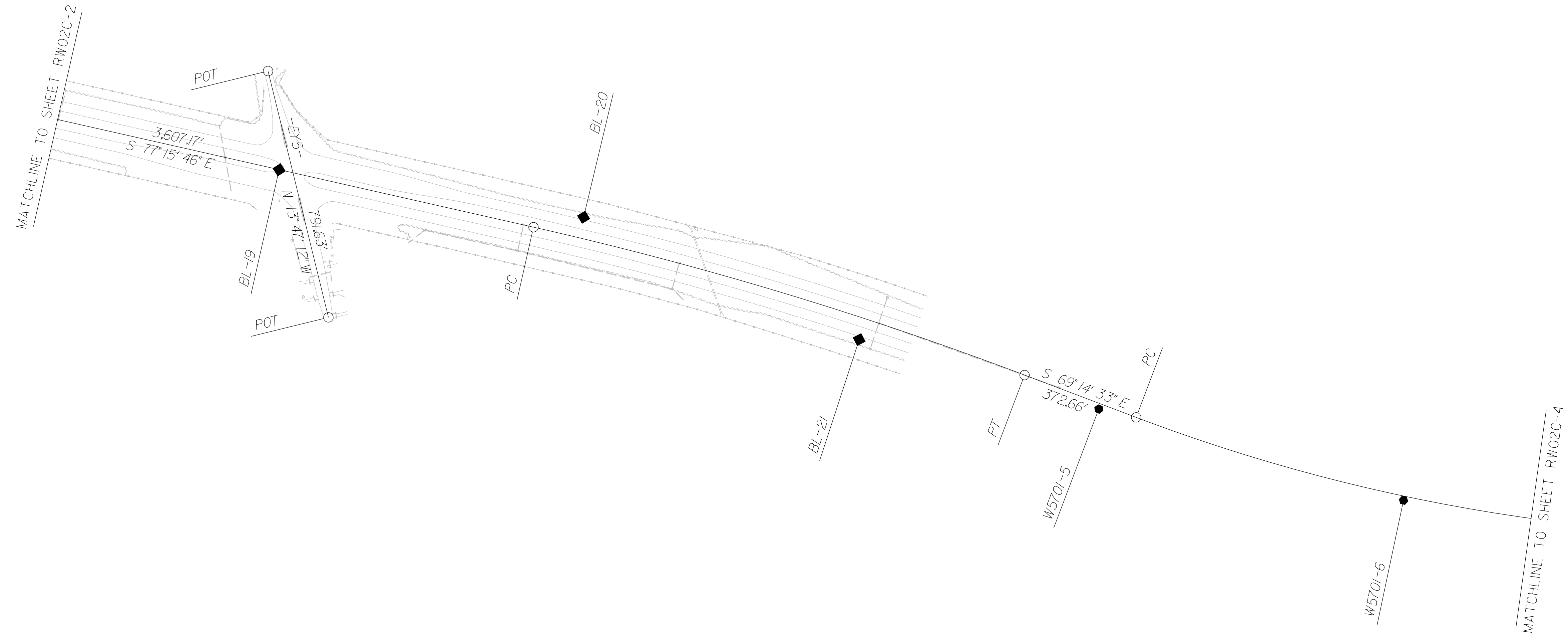
1. PROJECT CONTROL WAS ESTABLISHED USING GNSS, THE GLOBAL NAVIGATION SATELLITE SYSTEM.
2. THE SURVEY CONTROL DATA FOR THIS PROJECT HAS BEEN COMPILED FROM VARIOUS SOURCES. IF FURTHER INFORMATION REGARDING PROJECT CONTROL IS NEEDED, PLEASE CONTACT THE LOCATION AND SURVEYS UNIT.

26-SEP-2025 14:49  
 R:\B\_Jobs\Drawings\Projects\HertfordCo\W-5701B\CONTROL\_SHEETS\190610\W5701B\_1s\_rw02c-2.dgn  
 Jtdowns AT LS-345772L

PROJECT REFERENCE NO.	SHEET NO.
M6-5701B	RW02C-3
<b>Location and Surveys</b>	
Johnson, Mirmiran & Thompson, Inc. 9201 Arboretum Parkway, Suite 310 Richmond, VA 23236	

# SURVEY CONTROL SHEET

## W/ EXISTING CENTERLINE ALIGNMENTS PRIOR TO CONSTRUCTION



SEE SHEET RW02C-6  
FOR FURTHER  
ALIGNMENT DETAILS

### NOTES:

1. PROJECT CONTROL WAS ESTABLISHED USING GNSS, THE GLOBAL NAVIGATION SATELLITE SYSTEM.
2. THE SURVEY CONTROL DATA FOR THIS PROJECT HAS BEEN COMPILED FROM VARIOUS SOURCES. IF FURTHER INFORMATION REGARDING PROJECT CONTROL IS NEEDED, PLEASE CONTACT THE LOCATION AND SURVEYS UNIT.

REVISIONS

26-SEP-2025 14:51  
R:\B\_Jobs\Divisions\Projects\HertfordCo\W-5701B\CONTROL\CONTROL SHEETS\190610\W5701B\_1s\_rw02c-3.dgn  
tdowns AT LS-345772L

PROJECT REFERENCE NO.	SHEET NO.
M6-5701B	RW02C-4
<b>Location and Surveys</b>	
Johnson, Mirmiran & Thompson, Inc. 9201 Arboretum Parkway, Suite 310 Richmond, VA 23236	

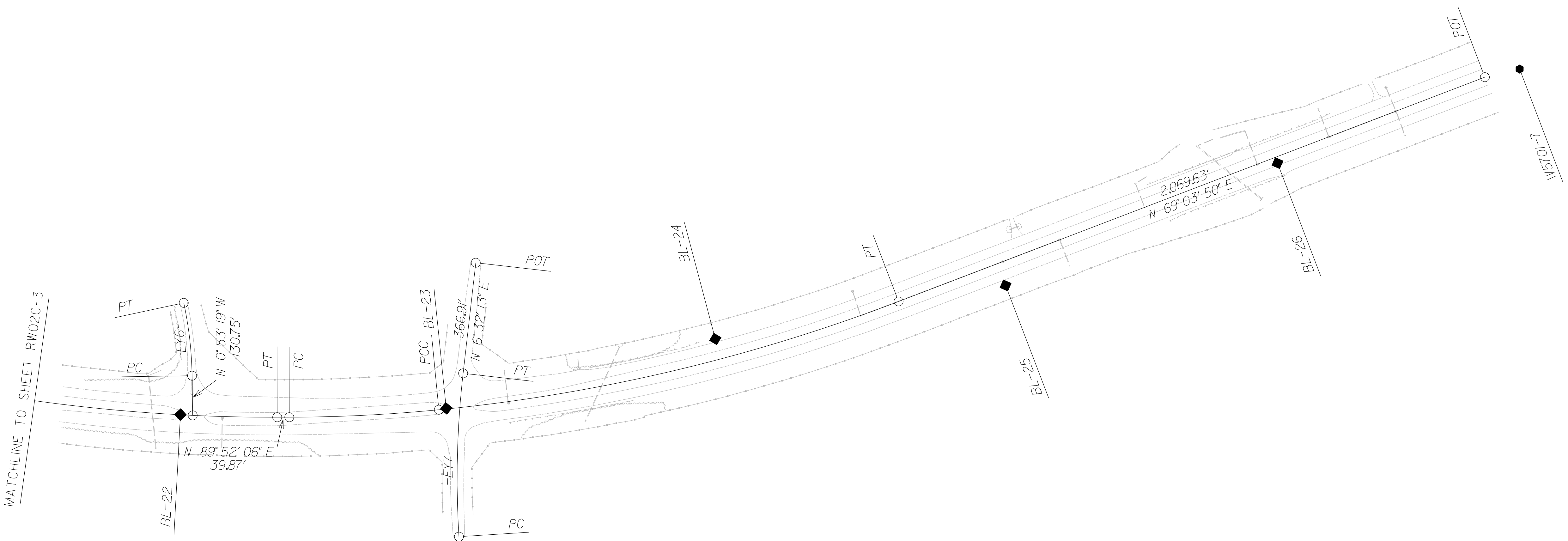
# SURVEY CONTROL SHEET

## W/EXISTING CENTERLINE ALIGNMENTS PRIOR TO CONSTRUCTION



REVISIONS

26-SEP-2025 14:52  
 R:\B\_Jobs\Divisions\Projects\HertfordCo\W-5701B\CONTROL\CONTROL SHEETS\190610\W5701B\_1s.rw02c-4.dgn  
 Ttdowns AT LS-345772L



SEE SHEET RW02C-6  
 FOR FURTHER  
 ALIGNMENT DETAILS

### NOTES:

1. PROJECT CONTROL WAS ESTABLISHED USING GNSS, THE GLOBAL NAVIGATION SATELLITE SYSTEM.
2. THE SURVEY CONTROL DATA FOR THIS PROJECT HAS BEEN COMPILED FROM VARIOUS SOURCES. IF FURTHER INFORMATION REGARDING PROJECT CONTROL IS NEEDED, PLEASE CONTACT THE LOCATION AND SURVEYS UNIT.

# SURVEY CONTROL SHEET

*W/ EXISTING CENTERLINE ALIGNMENTS PRIOR TO CONSTRUCTION*

PROJECT REFERENCE NO.	SHEET NO.
HS-2401P	RW02C-5
<b>Location and Surveys</b>	
Johnson, Mirmiran & Thompson, Inc. 9201 Arboretum Parkway, Suite 310 Richmond, VA 23236	

REVISIONS

BL	POINT	DESC.	NORTH	EAST	ELEVATION
W57011	W5701-1		983527.8700	2544116.1900	94.22
W57012	W5701-2		983451.4500	2545053.7900	79.75
BL9	BL-9		983389.9500	2546056.5500	85.67
BL10	BL-10		983274.8100	2547265.3200	82.79
BL11	BL-11		982700.8200	2548185.3000	76.70
BL12	BL-12		982254.3400	2548804.0400	63.39
W57013	W5701-3		981846.0700	2549436.6300	65.61
W57014	W5701-4		981304.7300	2550269.4900	69.11
BL13	BL-13		980734.7800	2551059.5900	65.48
BL14	BL-14		980408.7200	2551709.8900	73.13
BL15	BL-15		979926.6100	2552516.0100	79.14
BL16	BL-16		979726.4000	2553436.9700	88.76
BL17	BL-17		979447.4100	2554350.2700	94.55
BL18	BL-18		979363.7100	2555320.4800	93.49
BL19	BL-19		979119.4000	2556094.4800	92.82
BL20	BL-20		978971.2700	2557045.3000	85.75
BL21	BL-21		978589.3400	2557906.0700	77.95
W57015	W5701-5		978372.5100	2558654.0300	72.98
W57016	W5701-6		978087.8200	2559605.7700	76.79
BL22	BL-22		977985.2200	2560485.1100	83.44
BL23	BL-23		978005.7700	2561361.3600	89.98
BL24	BL-24		978234.6700	2562248.5500	90.48
BL25	BL-25		978411.1900	2563205.5800	84.35
BL26	BL-26		978814.5400	2564102.0700	79.62
W57017	W5701-7		979124.5500	2564900.2900	79.73
W57018	W5701-8		979479.6000	2565827.0800	87.06

.....  
 BM1 ELEVATION = 82.17  
 N 983254 E 2547337  
 SET ROD AND CAP  
 .....

.....  
 BM6 ELEVATION = 89.61  
 N 979240 E 2556173  
 SET ROD AND CAP  
 .....

.....  
 BM2 ELEVATION = 61.37  
 N 982379 E 2548798  
 SET NAIL IN 16" POPLAR  
 .....

.....  
 BM7 ELEVATION = 77.83  
 N 978642 E 2558173  
 SET ROD AND CAP  
 .....

.....  
 BM3 ELEVATION = 65.79  
 N 981151 E 2550663  
 SET ROD AND CAP  
 .....

.....  
 BM8 ELEVATION = 79.56  
 N 978093 E 2560056  
 SET ROD AND CAP  
 .....

.....  
 BM4 ELEVATION = 73.71  
 N 980233 E 2552169  
 SET ROD AND CAP  
 .....

.....  
 BM9 ELEVATION = 91.07  
 N 978208 E 2562139  
 SET ROD AND CAP  
 .....

.....  
 BM5 ELEVATION = 93.78  
 N 979579 E 2554381  
 SET ROD AND CAP  
 .....

.....  
 BM10 ELEVATION = 78.01  
 N 978936 E 2564166  
 SET ROD AND CAP  
 .....

**NOTES:**

1. PROJECT CONTROL WAS ESTABLISHED USING GNSS, THE GLOBAL NAVIGATION SATELLITE SYSTEM.
2. THE SURVEY CONTROL DATA FOR THIS PROJECT HAS BEEN COMPILED FROM VARIOUS SOURCES. IF FURTHER INFORMATION REGARDING PROJECT CONTROL IS NEEDED, PLEASE CONTACT THE LOCATION AND SURVEYS UNIT.

# SURVEY CONTROL SHEET

W/EXISTING CENTERLINE ALIGNMENTS PRIOR TO CONSTRUCTION

PROJECT REFERENCE NO.	SHEET NO.
HS-2401P	RW02C-6
<b>Location and Surveys</b>	
Johnson, Mirmiran & Thompson, Inc. 9201 Arboretum Parkway, Suite 310 Richmond, VA 23236	

REVISIONS

EL									
POINT	N	E	BEARING	DIST	DELTA	D	L	T	R
PC	983418.154	2545437.129							
CURVE			S 88°59'21.9" E	855.42	00°47'25.9"(RT)	00°05'32.7"	855.43	427.72	62000.00
PCC	983403.067	2546292.416							
CURVE			S 72°47'15.4" E	1560.79	31°36'47.0"(RT)	01°59'59.5"	1580.77	811.07	2865.00
PT	982941.205	2547783.310							
LINE			S 56°58'51.9" E	4438.45					
PC	980522.623	2551504.910							
CURVE			S 67°07'18.8" E	2024.78	20°16'53.9"(LT)	00°59'47.2"	2035.39	1028.46	5750.00
PT	979735.445	2553370.410							
LINE			S 77°15'45.8" E	3607.17					
PC	978940.132	2556888.812							
CURVE			S 73°15'09.2" E	1601.47	08°01'13.1"(RT)	00°30'01.4"	1602.78	802.70	11450.00
PT	978478.663	2558422.356							
LINE			S 69°14'32.7" E	372.66					
PC	978346.587	2558770.825							
CURVE			S 79°41'13.1" E	2066.64	20°53'20.9"(LT)	01°00'18.7"	2078.13	1050.73	5700.00
PT	977976.605	2560804.077							
LINE			N 89°52'06.4" E	39.87					
PC	977976.696	2560843.948							
CURVE			N 87°08'49.5" E	493.78	05°26'33.8"(LT)	01°06'06.6"	493.97	247.17	5200.00
PCC	978001.273	2561337.115							
CURVE			N 76°44'41.1" E	1557.11	15°21'43.2"(LT)	00°59'01.0"	1561.78	785.60	5825.00
PT	978358.302	2562852.741							
LINE			N 69°03'49.5" E	2069.63					
POT	979097.841	2564785.731							

EY									
POINT	N	E	BEARING	DIST	DELTA	D	L	T	R
PC	983290.526	2545922.399							
CURVE			N 07°13'00.3" W	13.07	13°29'02.8"(RT)	102°56'47.6"	13.10	6.58	55.66
PT	983303.490	2545920.758							
LINE			N 00°28'28.9" W	107.60					
POT	983411.090	2545919.866							

EY1									
POINT	N	E	BEARING	DIST	DELTA	D	L	T	R
PC	982421.063	2547896.087							
CURVE			N 53°03'56.5" E	135.81	05°22'05.9"(RT)	03°57'05.2"	135.86	67.98	1450.00
PT	982502.670	2548004.642							
LINE			N 55°44'59.5" E	267.91					
POT	982653.451	2548226.092							

EY2				
POINT	N	E	BEARING	DIST
POT	982648.029	2548234.435		
LINE			N 61°03'55.6" E	474.88
POT	982877.782	2548650.039		

EY3									
POINT	N	E	BEARING	DIST	DELTA	D	L	T	R
POT	980380.027	2551230.611							
LINE			S 63°50'08.7" E	275.95					
PC	980258.347	2551478.287							
CURVE			N 73°23'12.8" E	244.49	85°33'17.0"(LT)	31°49'51.6"	268.78	166.55	180.00
PT	980328.250	2551712.575							
LINE			N 30°36'34.3" E	144.00					
PC	980452.187	2551785.899							
CURVE			N 50°44'10.9" E	130.76	40°15'13.1"(RT)	30°09'20.4"	133.49	69.63	190.00
PT	980534.942	2551887.137							
LINE			N 70°51'47.5" E	139.27					
POT	980580.597	2552018.707							

EY4									
POINT	N	E	BEARING	DIST	DELTA	D	L	T	R
POT	979354.240	2553481.231							
LINE			N 37°18'16.0" W	69.86					
PC	979409.809	2553438.892							
CURVE			N 12°17'00.9" W	279.15	50°02'30.2"(RT)	17°21'44.5"	288.22	154.03	330.00
PT	979682.564	2553379.504							
LINE			N 12°44'14.2" E	49.57					
POT	979730.918	2553390.434							

EY5				
POINT	N	E	BEARING	DIST
POT	978658.612	2556248.441		
LINE			N 13°47'11.8" W	791.63
POT	979427.431	2556059.791		

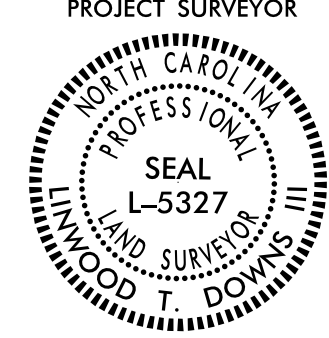
EY6									
POINT	N	E	BEARING	DIST	DELTA	D	L	T	R
POT	977982.776	2560525.490							
LINE			N 00°53'18.6" W	130.75					
PC	978113.507	2560523.463							
CURVE			N 06°30'48.0" W	241.76	11°14'58.8"(LT)	04°38'44.6"	242.15	121.47	1233.00
PT	978353.709	2560496.039							

EY7									
POINT	N	E	BEARING	DIST	DELTA	D	L	T	R
PC	977582.877	2561403.340							
CURVE			N 01°27'41.8" E	538.74	10°09'01.7"(RT)	01°52'53.9"	539.45	270.43	3045.00
PT	978121.446	2561417.082							
LINE			N 06°32'12.7" E	366.91					
POT	978485.974	2561458.853							

**NOTES:**


- PROJECT CONTROL WAS ESTABLISHED USING GNSS, THE GLOBAL NAVIGATION SATELLITE SYSTEM.
- THE SURVEY CONTROL DATA FOR THIS PROJECT HAS BEEN COMPILED FROM VARIOUS SOURCES. IF FURTHER INFORMATION REGARDING PROJECT CONTROL IS NEEDED, PLEASE CONTACT THE LOCATION AND SURVEYS UNIT.

# PROPOSED ALIGNMENT CONTROL SHEET

PROJECT REFERENCE NO. HS-2401P	SHEET NO. RW02D-1
<b>Location and Surveys</b>	
Location & Surveys Division 1 1300 US HWY 64 West Plymouth, NC 27962	
	
<b>DOCUMENT NOT CONSIDERED FINAL UNLESS ALL SIGNATURES COMPLETED</b>	

I, Linwood T. Downs III, PLS, certify that the data compiled came from available surveys/mapping performed by others and provided to me by NCDOT and do not certify to the accuracy or quality of the individual data sources.

This 26th day of September, 2025.

  
Professional Land Surveyor L-5327

POINT	N	E	BEARING	DIST	DELTA	D	L	T	R
PC	983418.154	2545437.129	S 88°59'21.9" E	855.42	00°47'25.9"(RT)	00°05'32.7"	855.43	427.72	62000.00
CURVE	983403.067	2546292.416	S 72°47'15.4" E	1560.79	31°36'47.0"(RT)	01°59'59.5"	1580.77	811.07	2865.00
PCC	982941.205	2547783.310	S 56°58'51.9" E	4438.45					
PT	980522.623	2551504.910	S 67°07'18.8" E	2024.78	20°16'53.9"(LT)	00°59'47.2"	2035.39	1028.46	5750.00
PC	979735.445	2553370.410	S 77°15'45.8" E	3607.17					
LINE	978940.132	2556888.812	S 73°15'09.2" E	1601.47	08°01'13.1"(RT)	00°30'01.4"	1602.78	802.70	11450.00
CURVE	978478.663	2558422.356	S 69°14'32.7" E	372.66					
PT	978346.587	2558770.825	S 79°41'13.1" E	2066.64	20°53'20.9"(LT)	01°00'18.7"	2078.13	1050.73	5700.00
PC	977976.605	2560804.077	N 89°52'06.4" E	39.87					
LINE	977976.696	2560843.948	N 87°08'49.5" E	493.78	05°26'33.8"(LT)	01°06'06.6"	493.97	247.17	5200.00
CURVE	978001.273	2561337.115	N 76°44'41.1" E	1557.11	15°21'43.2"(LT)	00°59'01.0"	1561.78	785.60	5825.00
PCC	978358.302	2562852.741	N 69°03'49.5" E	2069.63					
CURVE	979097.841	2564785.731							
PT									
LINE									
POT									

POINT	N	E	BEARING	DIST	DELTA	D	L	T	R
PC	983318.010	2547034.586	S 71°35'18.6" E	202.07	03°46'07.9"(RT)	01°51'53.3"	202.10	101.09	3072.47
CURVE	983254.190	2547226.311	S 63°20'33.3" E	641.54	12°43'22.8"(RT)	01°58'44.9"	642.86	322.76	2895.00
PCC	982966.360	2547799.657							
CURVE									
PT									

POINT	N	E	BEARING	DIST	DELTA	D	L	T	R
PC	982404.786	2547876.770	N 52°33'59.8" E	161.04	06°21'59.4"(RT)	03°57'05.2"	161.12	80.64	1450.00
CURVE	982502.670	2548004.642	N 55°44'59.5" E	267.91					
PT	982653.451	2548226.092							
LINE									
POT									

POINT	N	E	BEARING	DIST
POT	982648.029	2548234.435	N 61°03'55.6" E	524.88
LINE				
POT	982901.972	2548693.798		

POINT	N	E	BEARING	DIST	DELTA	D	L	T	R
POT	980380.027	2551230.611	S 63°50'08.7" E	275.95					
LINE	980250.347	2551478.287	N 73°23'12.8" E	244.49	85°33'17.0"(LT)	31°49'51.6"	268.78	166.55	180.00
PC	980328.250	2551712.575	N 30°36'34.3" E	144.00					
CURVE	980452.187	2551785.899	N 50°44'10.9" E	130.76	40°15'13.1"(RT)	30°09'20.4"	133.49	69.63	190.00
PT	980534.942	2551887.137	N 70°51'47.5" E	139.27					
LINE	980580.597	2552018.707							
POT									

POINT	N	E	BEARING	DIST	DELTA	D	L	T	R
POT	979354.240	2553481.231	N 37°18'16.0" W	69.86					
LINE	979409.809	2553438.892	N 12°17'00.9" W	279.15	50°02'30.2"(RT)	17°21'44.5"	288.22	154.03	330.00
PC	979682.564	2553379.504	N 12°44'14.2" E	49.57					
CURVE	979730.918	2553390.434							
PT									
LINE									
POT									

POINT	N	E	BEARING	DIST
POT	978634.721	2556254.303	N 13°47'11.8" W	816.23
LINE				
POT	979427.431	2556059.791		

POINT	N	E	BEARING	DIST	DELTA	D	L	T	R
POT	977982.776	2560525.490	N 00°53'18.6" W	130.75					
LINE	978113.507	2560523.463	N 06°30'48.0" W	241.76	11°14'58.8"(LT)	04°38'44.6"	242.15	121.47	1233.30
PC	978353.709	2560496.039							
CURVE									
PT									

POINT	N	E	BEARING	DIST	DELTA	D	L	T	R
PC	977433.026	2561416.527	N 00°02'46.3" E	688.42	12°58'52.7"(RT)	01°52'53.9"	689.90	346.43	3045.00
CURVE	978121.446	2561417.082	N 06°32'12.7" E	435.99					
PT	978554.603	2561468.717							
LINE									
POT									

**NOTES:**

1. PROJECT CONTROL WAS ESTABLISHED USING GNSS, THE GLOBAL NAVIGATION SATELLITE SYSTEM.
2. THE PROPOSED ALIGNMENT CONTROL DATA FOR THIS PROJECT HAS BEEN COMPILED FROM VARIOUS SOURCES. IF FURTHER INFORMATION REGARDING PROJECT CONTROL IS NEEDED, PLEASE CONTACT THE LOCATION AND SURVEYS UNIT.

REVISIONS