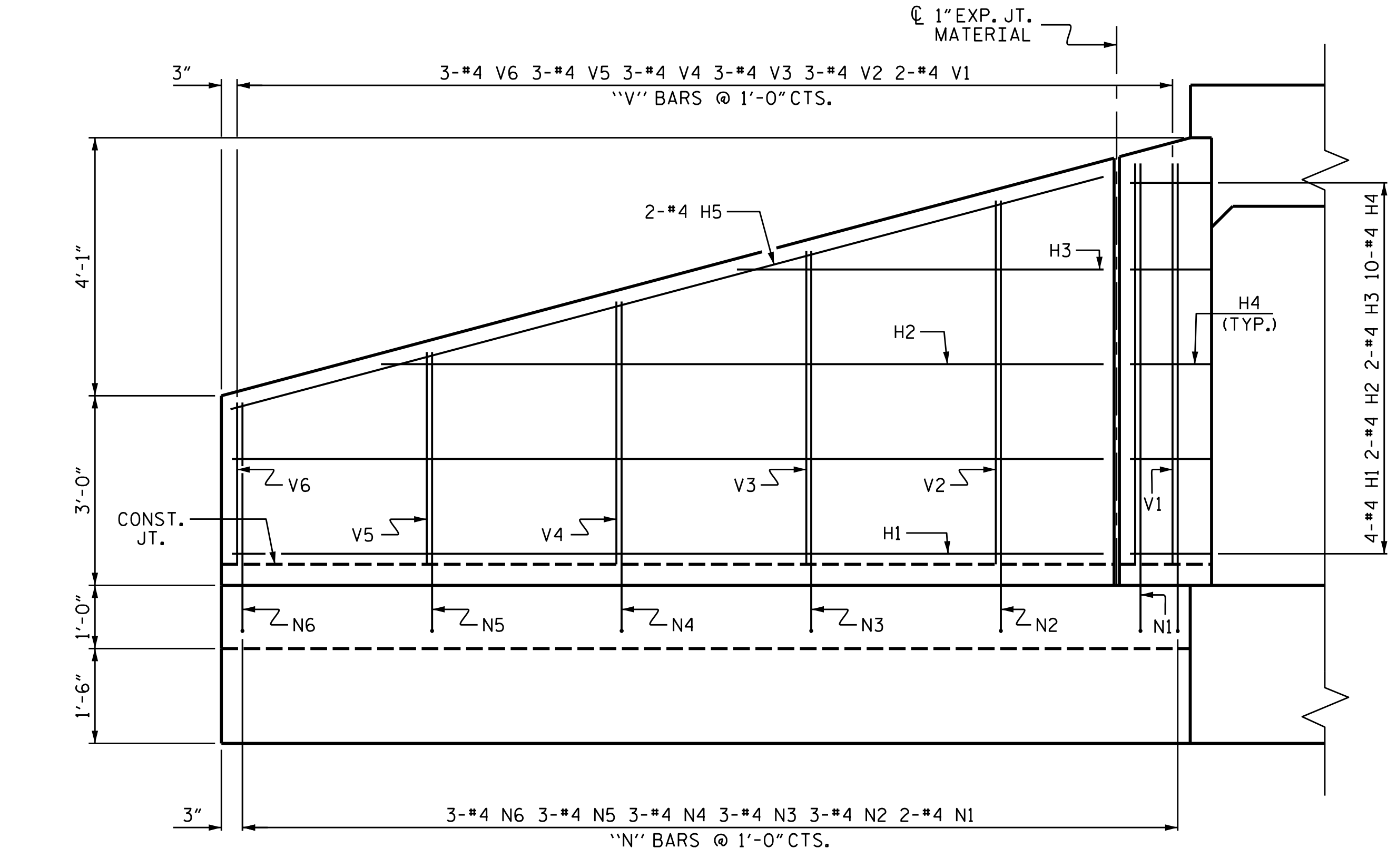
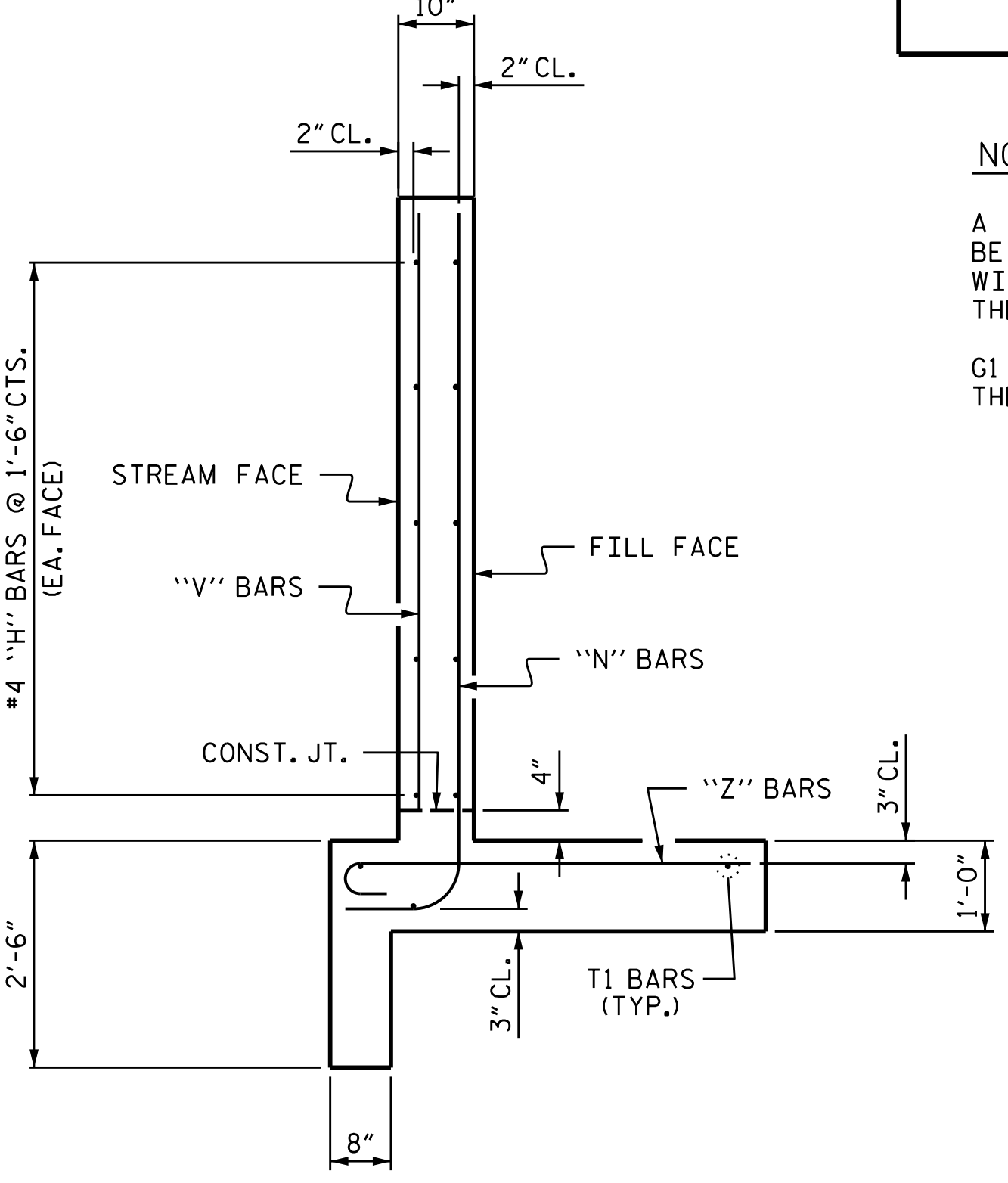


PLAN



ELEVATION



TYPICAL WING SECTION

BAR TYPES	
1	
2	
3	

BILL OF MATERIAL					
BAR NO.	SIZE	TYPE	LENGTH	WEIGHT	
H1	16	#4	STR	13'-9"	147
H2	8	#4	STR	11'-5"	61
H3	8	#4	STR	5'-9"	31
H4	40	#4	1	3'-3"	87
H5	8	#4	STR	14'-3"	76
N1	8	#4	2	8'-8"	46
N2	12	#4	2	7'-10"	63
N3	12	#4	2	7'-2"	57
N4	12	#4	2	6'-4"	51
N5	12	#4	2	5'-5"	43
N6	12	#4	2	4'-7"	37
T1	12	#5	STR	15'-8"	196
V1	8	#4	STR	6'-4"	34
V2	12	#4	STR	5'-7"	45
V3	12	#4	STR	4'-10"	39
V4	12	#4	STR	4'-1"	33
V5	12	#4	STR	3'-4"	27
V6	12	#4	STR	2'-6"	20
Z1	8	#4	3	4'-10"	26
Z2	12	#4	3	4'-6"	36
Z3	12	#4	3	4'-2"	33
Z4	12	#4	3	3'-10"	31
Z5	12	#4	3	3'-5"	27
Z6	12	#4	3	3'-0"	24
REINFORCING STEEL FOR 4 WINGS				1270	LBS
CLASS A CONCRETE					
4 WINGS				19.2	CY
2 HEADWALLS				1.3	CY
2 END CURTAIN WALLS				1.4	CY
TOTAL				22.9	CY

NOTES:

A 3 FOOT STRIP OF FILTER FABRIC SHALL BE ATTACHED TO THE FILL FACE OF THE WING COVERING THE ENTIRE LENGTH OF THE EXPANSION JOINT.

G1 BARS IN HEADWALL ARE INCLUDED WITH THE BARREL REINFORCING STEEL.

PROJECT NO. A-0009CD
 COUNTY GRAHAM
 STATION: 10+67.00 -Y3A-



STATE OF NORTH CAROLINA
 DEPARTMENT OF TRANSPORTATION
 RALEIGH

WINGS FOR
 CONCRETE BOX CULVERT
 H = 6'-0" SLOPE = 3:1
 90° SKEW

ASSEMBLED BY : STM DATE : 01/22
 CHECKED BY : MGC DATE : 01/22

DOCUMENT NOT CONSIDERED FINAL UNLESS ALL SIGNATURES COMPLETED

TGS ENGINEERS
 201 W. MARION ST STE 200
 SHELBY, NC 28150
 PH (704) 476-0003
 CORP. LICENSE NO.: C-0275

REVISIONS						SHEET NO.
NO.	BY:	DATE:	NO.	BY:	DATE:	C2-7
1			3			TOTAL SHEETS
2			4			7