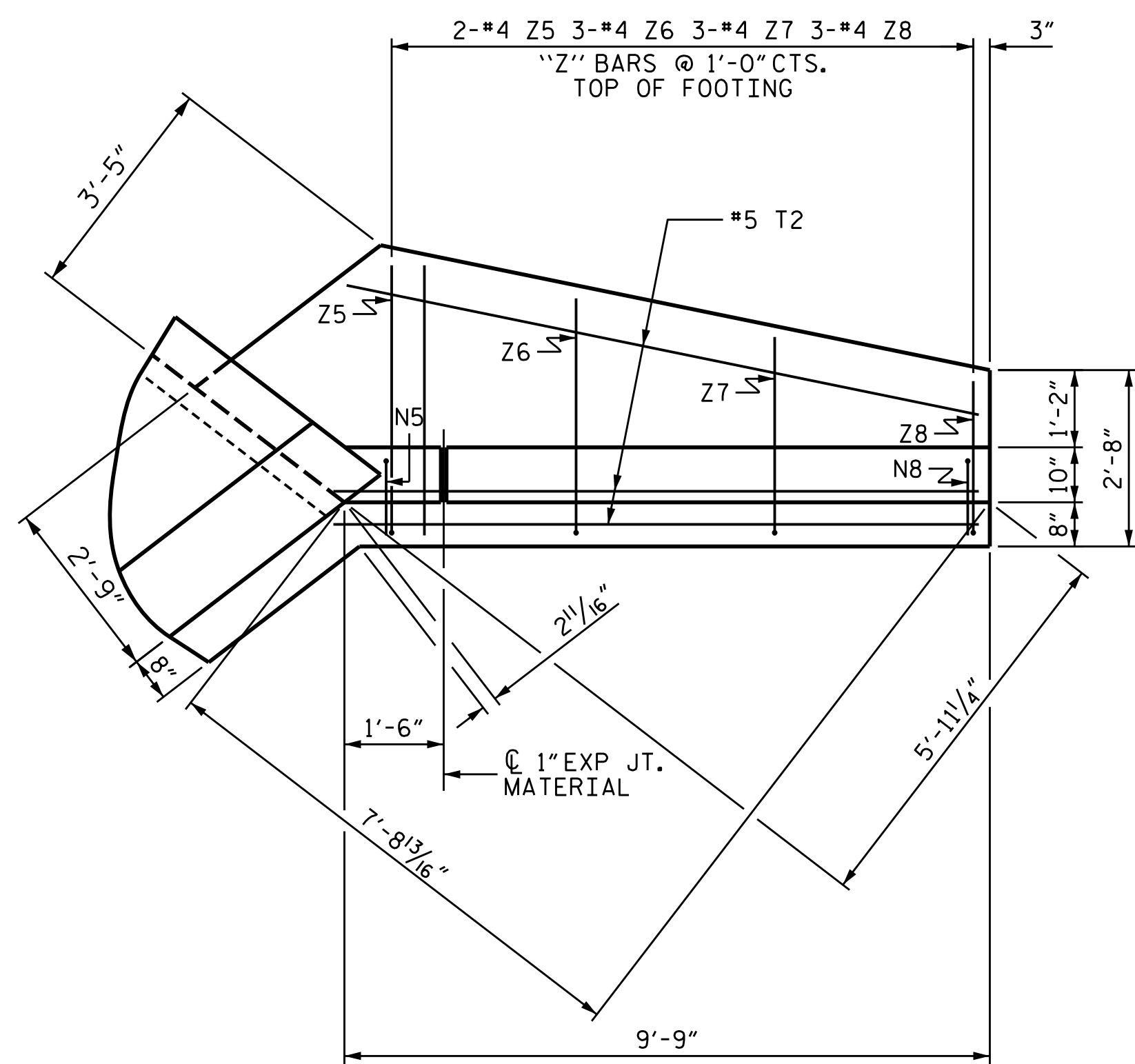
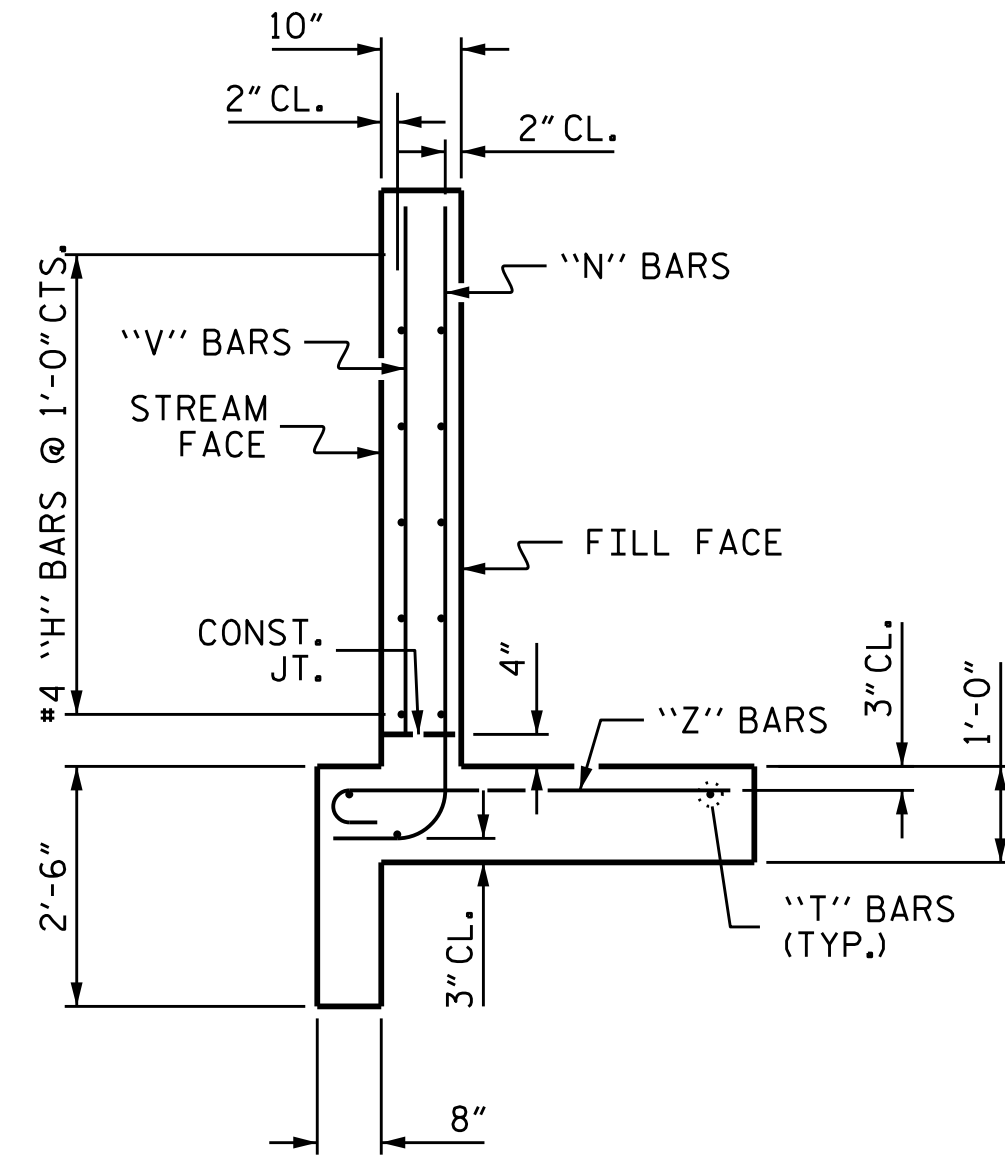


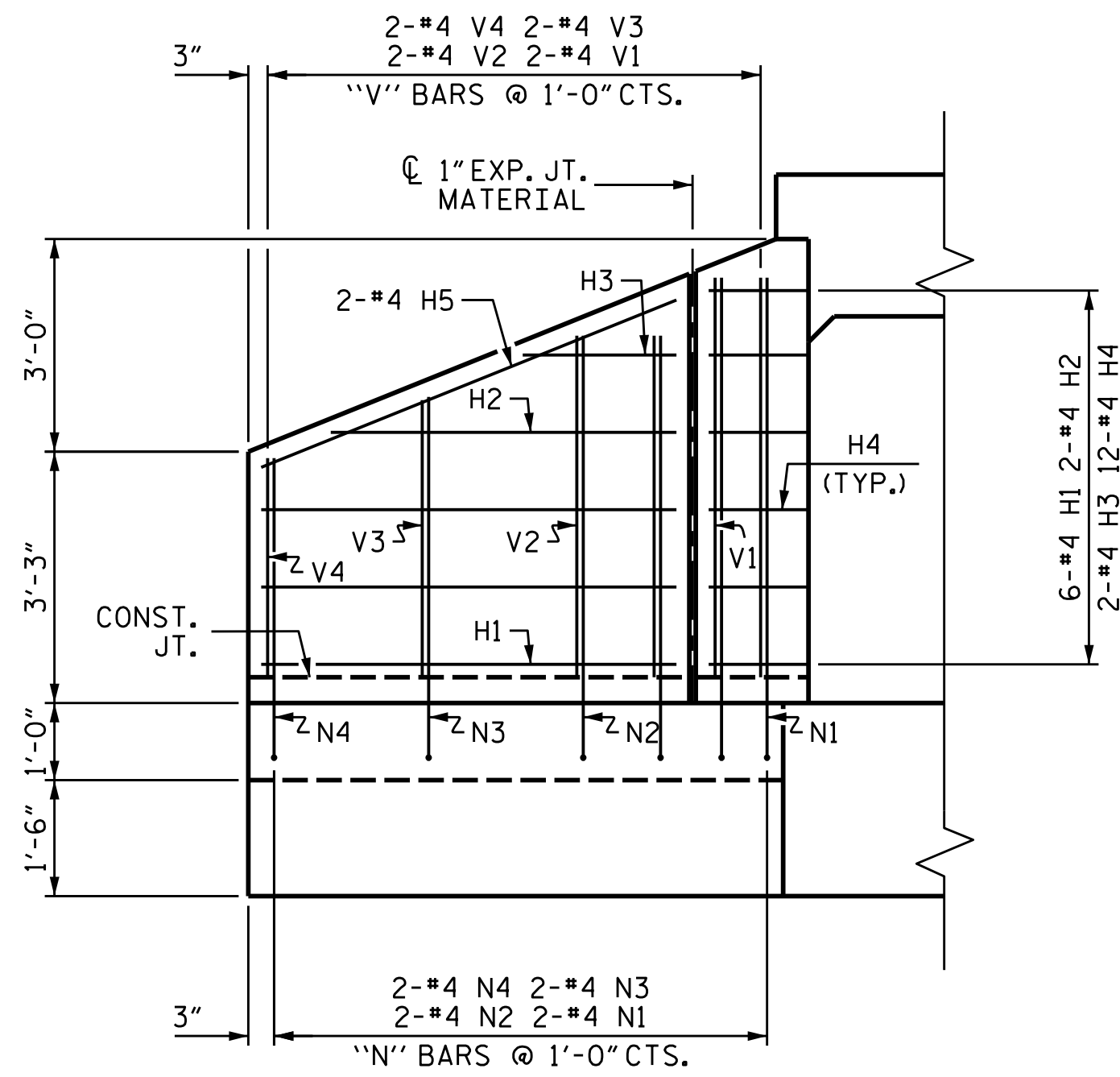
PLAN W2



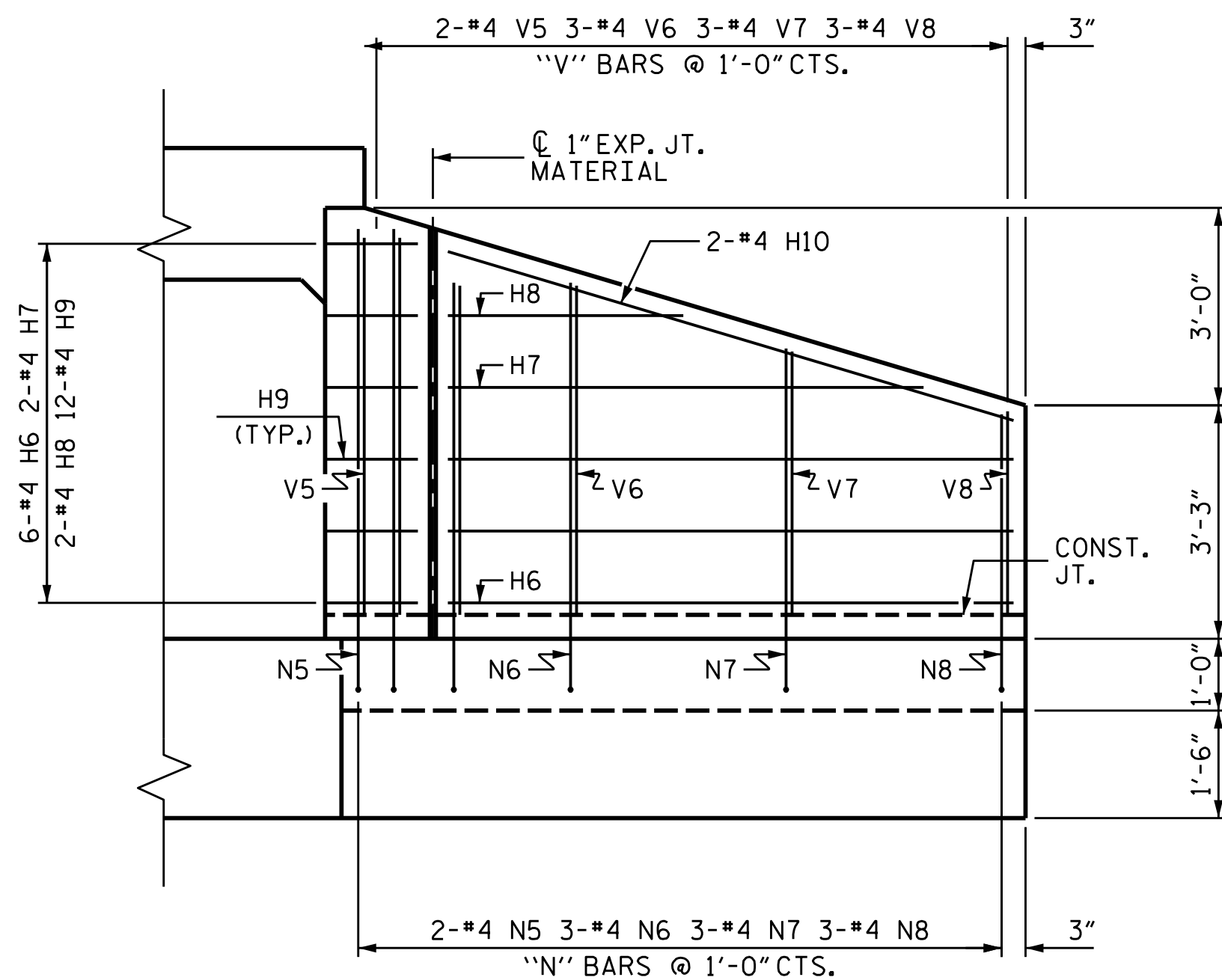
PLAN W1



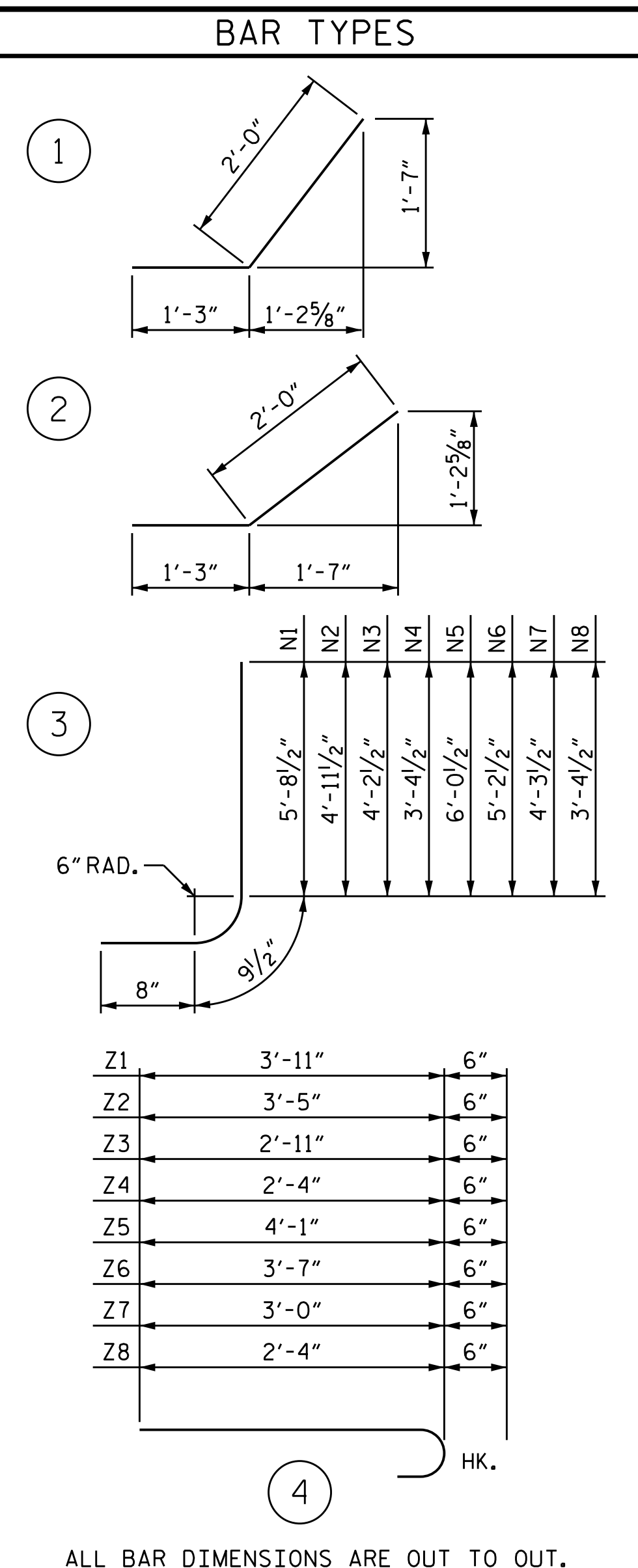
TYPICAL WING SECTION



ELEVATION W2



ELEVATION W1



ALL BAR DIMENSIONS ARE OUT TO OUT.

NOTE:
A 3 FOOT STRIP OF FILTER FABRIC SHALL BE ATTACHED TO THE FILL FACE OF THE WING COVERING THE ENTIRE LENGTH OF THE EXPANSION JOINT.
G1 BARS IN HEADWALL ARE INCLUDED WITH THE BARREL REINFORCING STEEL.

| BILL OF MATERIAL | | | | | |
|-------------------------------|-----|------|------|--------|---------|
| BAR | NO. | SIZE | TYPE | LENGTH | WEIGHT |
| H1 | 12 | #4 | STR | 5'-4" | 43 |
| H2 | 4 | #4 | STR | 4'-5" | 12 |
| H3 | 4 | #4 | STR | 2'-0" | 5 |
| H4 | 24 | #4 | 1 | 3'-3" | 52 |
| H5 | 4 | #4 | STR | 5'-9" | 15 |
| H6 | 12 | #4 | STR | 7'-10" | 63 |
| H7 | 4 | #4 | STR | 6'-7" | 18 |
| H8 | 4 | #4 | STR | 3'-3" | 9 |
| H9 | 24 | #4 | 2 | 3'-3" | 52 |
| H10 | 4 | #4 | STR | 8'-2" | 22 |
| N1 | 4 | #4 | 3 | 7'-2" | 19 |
| N2 | 4 | #4 | 3 | 6'-5" | 17 |
| N3 | 4 | #4 | 3 | 5'-8" | 15 |
| N4 | 4 | #4 | 3 | 4'-10" | 13 |
| N5 | 4 | #4 | 3 | 7'-6" | 20 |
| N6 | 6 | #4 | 3 | 6'-8" | 27 |
| N7 | 6 | #4 | 3 | 5'-9" | 23 |
| N8 | 6 | #4 | 3 | 4'-10" | 19 |
| T1 | 6 | #5 | STR | 7'-3" | 45 |
| T2 | 6 | #5 | STR | 9'-9" | 61 |
| V1 | 4 | #4 | STR | 5'-2" | 14 |
| V2 | 4 | #4 | STR | 4'-5" | 12 |
| V3 | 4 | #4 | STR | 3'-7" | 10 |
| V4 | 4 | #4 | STR | 2'-10" | 8 |
| V5 | 4 | #4 | STR | 5'-3" | 14 |
| V6 | 6 | #4 | STR | 4'-7" | 18 |
| V7 | 6 | #4 | STR | 3'-8" | 15 |
| V8 | 6 | #4 | STR | 2'-10" | 11 |
| Z1 | 4 | #4 | 4 | 4'-5" | 12 |
| Z2 | 4 | #4 | 4 | 3'-11" | 10 |
| Z3 | 4 | #4 | 4 | 3'-5" | 9 |
| Z4 | 4 | #4 | 4 | 2'-10" | 8 |
| Z5 | 4 | #4 | 4 | 4'-7" | 12 |
| Z6 | 6 | #4 | 4 | 4'-1" | 16 |
| Z7 | 6 | #4 | 4 | 3'-6" | 14 |
| Z8 | 6 | #4 | 4 | 2'-10" | 11 |
| REINFORCING STEEL FOR 4 WINGS | | | | | 744 LBS |
| CLASS A CONCRETE | | | | | |
| 4 WINGS | | | | | 11.2 CY |
| 2 HEADWALLS | | | | | 1.3 CY |
| 2 END CURTAIN WALLS | | | | | 1.4 CY |
| TOTAL | | | | | 13.9 CY |

| | | | |
|----------------|-----|--------|-------|
| ASSEMBLED BY : | ZCS | DATE : | 09/21 |
| CHECKED BY : | MGC | DATE : | 10/21 |
| DRAWN BY : | CCJ | REV. | 6/19 |
| CHECKED BY : | RWW | DATE : | 03/00 |

9/17/2025 X:\MCDOT\A-0009\Structures\A-0009CD\STR. #1 99+82.00 -Y2-Final Plans\DCNs\411.011.A-0009CD.SMU.CU06.dgn User:ZSmit

STATE OF NORTH CAROLINA
DEPARTMENT OF TRANSPORTATION
RALEIGH

STANDARD WINGS
FOR
CONCRETE BOX CULVERT
H = 5'-0" SLOPE = 2:1
75° SKEW

9/18/2026

DOCUMENT NOT CONSIDERED FINAL UNLESS ALL SIGNATURES COMPLETED

TGS ENGINEERS
201 W. MARION ST STE 200
SHELBY, NC 28150
PH (704) 476-0003
CORP. LICENSE NO.: C-0275

| REVISIONS | | | | | | SHEET NO. |
|-----------|-----|-------|-----|-----|-------|--------------|
| NO. | BY: | DATE: | NO. | BY: | DATE: | C1-6 |
| 1 | | | 3 | | | TOTAL SHEETS |
| 2 | | | 4 | | | 6 |