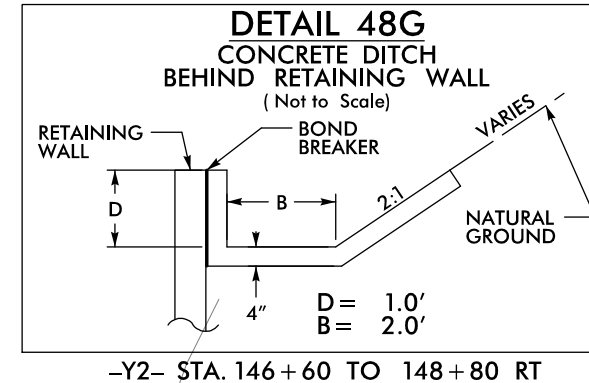
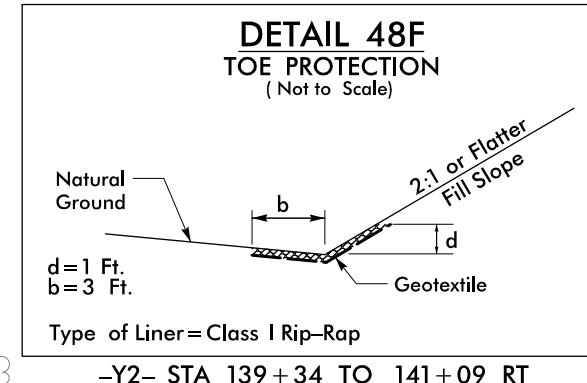
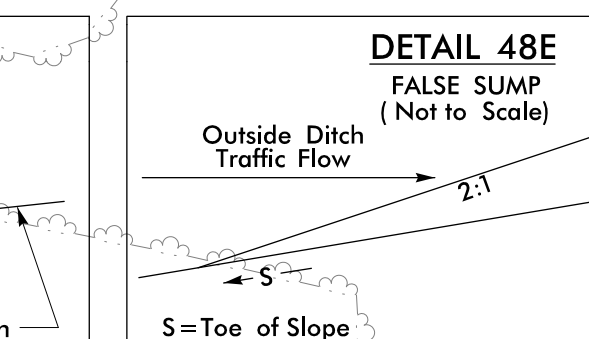
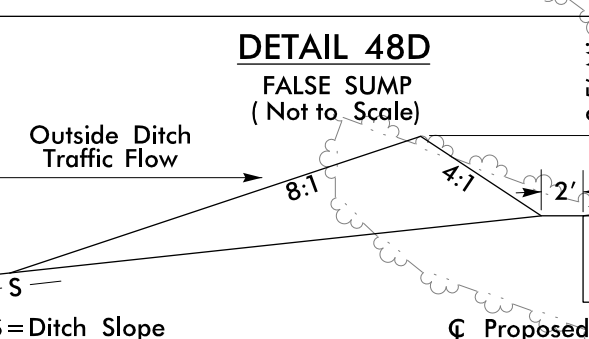
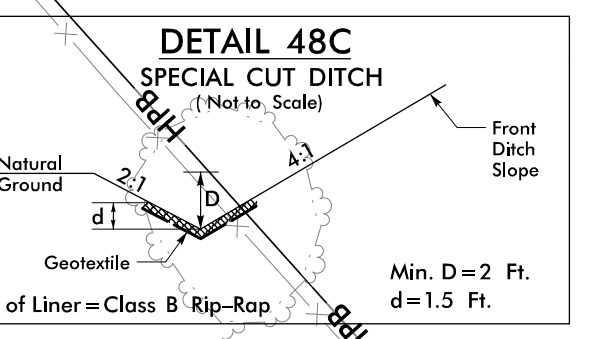
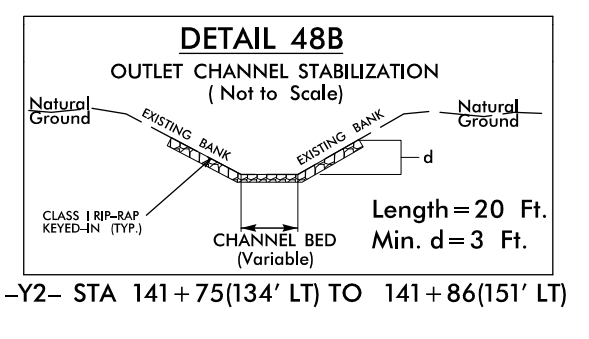
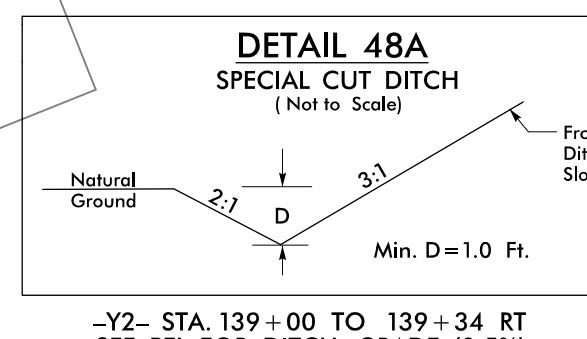


MATCH LINE STA -Y2- 138+00.00
MATCH TO SHEET NO. 47

MATCH LINE STA -Y2- 152+00.00
MATCH TO SHEET NO. 49

-Y2- CURVE DATA
 PI Sta 142+30.76
 Δ = 1° 24' 23.1" (LT)
 D = 0' 28' 38.9"
 L = 5294.56'
 T = 147.29'
 R = 12,000.00'
 SE = NC
 DS = 60 MPH

PI Sta 152+17.13
 Δ = 5° 14' 50.1" (RT)
 D = 5' 21' 17.1"
 L = 1,013.07'
 T = 548.10'
 R = 1,070.00'
 SE = 0.08
 DS = 55 MPH



2 @ 48 x 12 x 3
1.5 inch Skimmer
with 0.75 inch
Orifice Diameter
4 ft. weir
ID 48.1

2 @ 36 x 12 x 3
1.5 inch Skimmer
with 0.625 inch
Orifice Diameter
4 ft. weir
ID 48.3

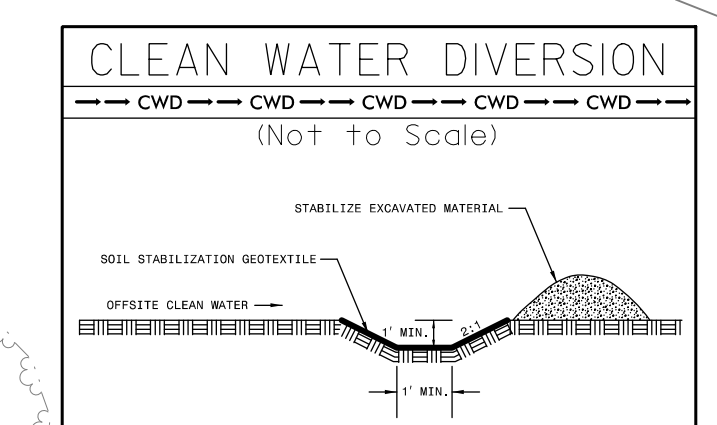
52 x 13 x 3
1.5 inch Skimmer
with 0.625 inch
Orifice Diameter
4 ft. weir
ID 48.1 F

2 @ 65 x 13 x 3
1.5 inch Skimmer
with 1.0 inch
Orifice Diameter
5 ft. weir
ID 48.2 F

50 x 12 x 3
1.5 inch Skimmer
with 0.625 inch
Orifice Diameter
4 ft. weir
ID 48.2

IN LIEU OF ROCK INLET SEDIMENT TRAP TYPE C,
UTILIZE FABRIC INSERT INLET PROTECTION
IN AREAS WHERE WATER MAY
POND ON ROAD OPEN TO LIVE TRAFFIC.

INSTALL MATTING FOR EROSION
CONTROL ON ALL GRADED DITCHES AND
GRADED SLOPES THAT DO NOT ALREADY
CALL FOR OTHER MEANS OF PERMANENT
OR TEMPORARY STABILIZATION



CLEAN WATER DIVERSIONS ARE
INDEPENDENT OF OTHER EC DITCH
LINES AND TERMINATE INTO A SC-A.

PROJECT REFERENCE NO. A-0009CD	SHEET NO. EC-15/CONST.48
RW SHEET NO.	
ROADWAY DESIGN ENGINEER	HYDRAULICS ENGINEER
TGS ENGINEERS 201 W. MARION ST-STE 200 SHELBY, NC 28150 PH (704) 476-0003 CORP. LICENSE NO.: C-0275	

