
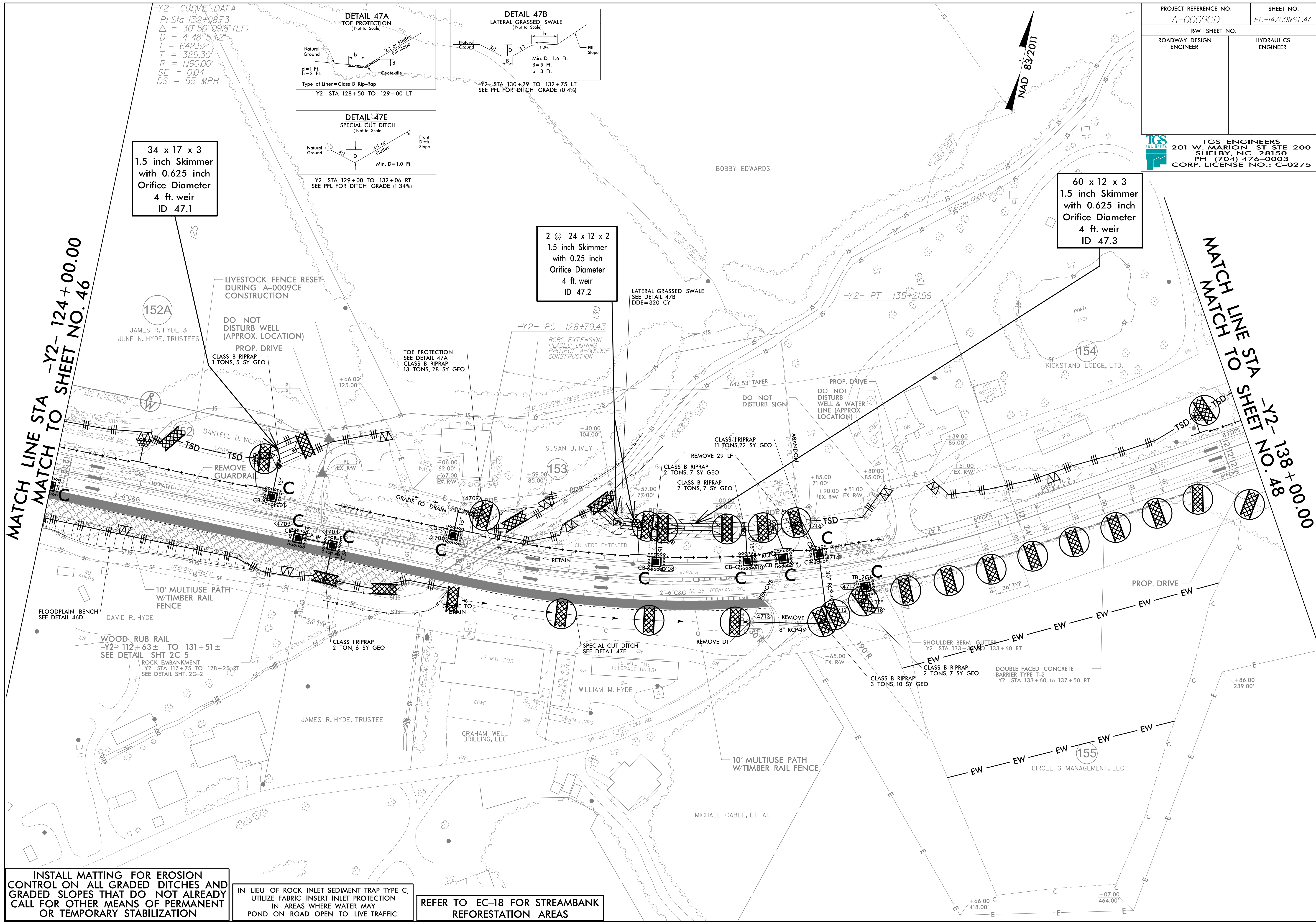


PROJECT REFERENCE NO.	SHEET NO.
A-0009CD	EC-14/CONST.47
RW SHEET NO.	
ROADWAY DESIGN ENGINEER	HYDRAULICS ENGINEER
 TGS ENGINEERS 201 W. MARION ST-STE 200 SHELBY, NC 28150 PH (704) 476-0003 CORP. LICENSE NO.: C-0275	



34 x 17 x 3
1.5 inch Skimmer
with 0.625 inch
Orifice Diameter
4 ft. weir
ID 47.1

2 @ 24 x 12 x 2
1.5 inch Skimmer
with 0.25 inch
Orifice Diameter
4 ft. weir
ID 47.2

60 x 12 x 3
1.5 inch Skimmer
with 0.625 inch
Orifice Diameter
4 ft. weir
ID 47.3

MATCH LINE STA
MATCH TO SHEET NO. 46
-Y2- 124+00.00

MATCH LINE TO STA
MATCH TO SHEET NO. 48
-Y2- 138+00.00

INSTALL MATTING FOR EROSION CONTROL ON ALL GRADED DITCHES AND GRADED SLOPES THAT DO NOT ALREADY CALL FOR OTHER MEANS OF PERMANENT OR TEMPORARY STABILIZATION

IN LIEU OF ROCK INLET SEDIMENT TRAP TYPE C, UTILIZE FABRIC INSERT INLET PROTECTION IN AREAS WHERE WATER MAY POND ON ROAD OPEN TO LIVE TRAFFIC.

REFER TO EC-18 FOR STREAMBANK REFORESTATION AREAS

-Y2- CURVE DATA
 PI Sta 132+08.73
 $\Delta = 30^{\circ}56'09.8''$ (LT)
 $D = 4^{\circ}48'53.2''$
 $L = 642.52'$
 $T = 329.30'$
 $R = 1,190.00'$
 $SE = 0.04$
 $DS = 55$ MPH