


PROJECT REFERENCE NO. A-0009CD		SHEET NO. EC-13/CONST.46	
RW SHEET NO.		HYDRAULICS ENGINEER	
ROADWAY DESIGN ENGINEER		HYDRAULICS ENGINEER	
 TGS ENGINEERS 201 W. MARION ST-STE 200 SHELBY, NC 28150 PH (704) 476-0003 CORP. LICENSE NO.: C-0275			

NAD 83/2011

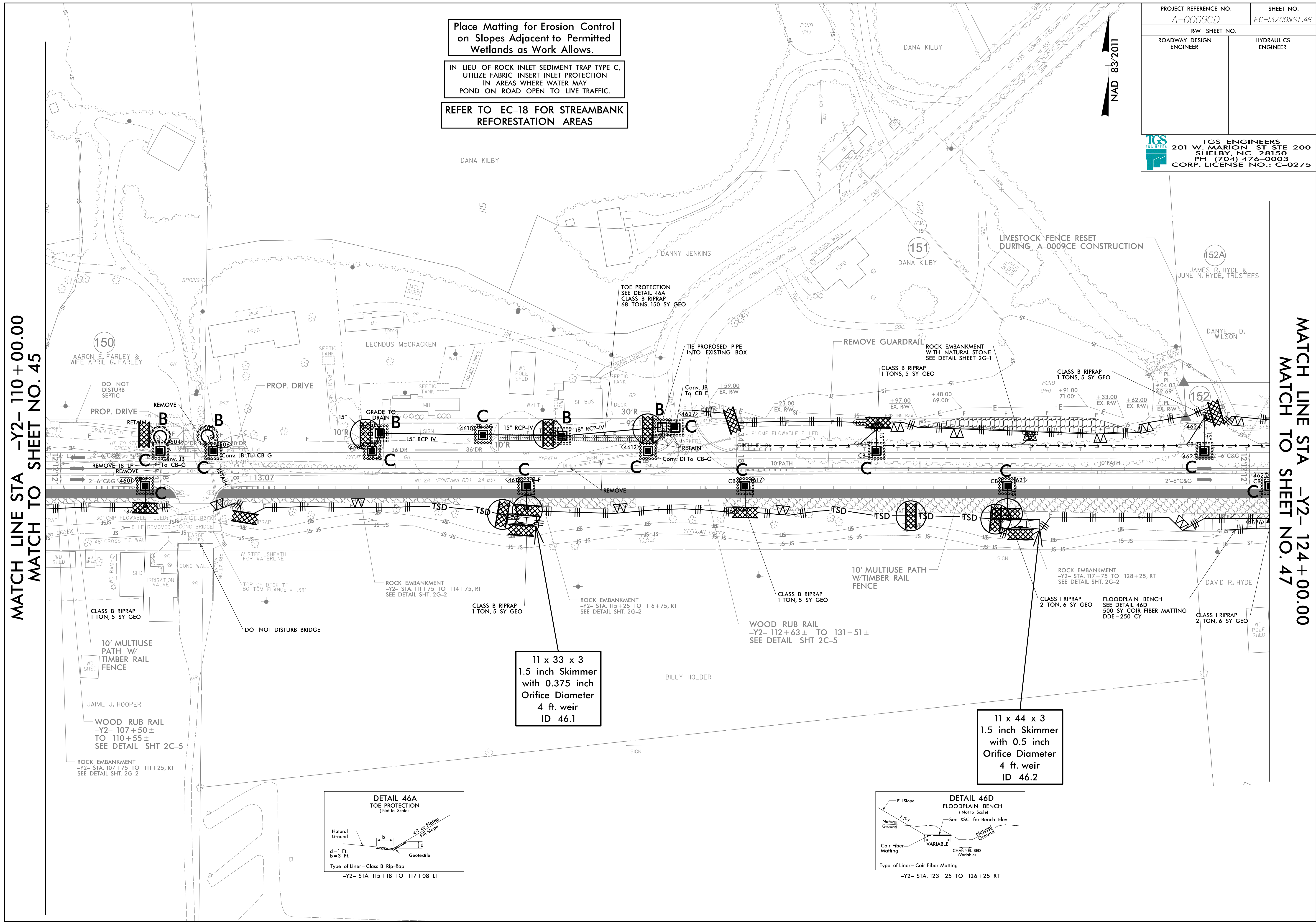
Place Matting for Erosion Control on Slopes Adjacent to Permitted Wetlands as Work Allows.

IN LIEU OF ROCK INLET SEDIMENT TRAP TYPE C, UTILIZE FABRIC INSERT INLET PROTECTION IN AREAS WHERE WATER MAY POND ON ROAD OPEN TO LIVE TRAFFIC.

REFER TO EC-18 FOR STREAMBANK REFORESTATION AREAS

MATCH LINE STA -Y2- 110+00.00
MATCH TO SHEET NO. 45

MATCH LINE STA -Y2- 124+00.00
MATCH TO SHEET NO. 47



11 x 33 x 3
1.5 inch Skimmer
with 0.375 inch
Orifice Diameter
4 ft. weir
ID 46.1

11 x 44 x 3
1.5 inch Skimmer
with 0.5 inch
Orifice Diameter
4 ft. weir
ID 46.2

