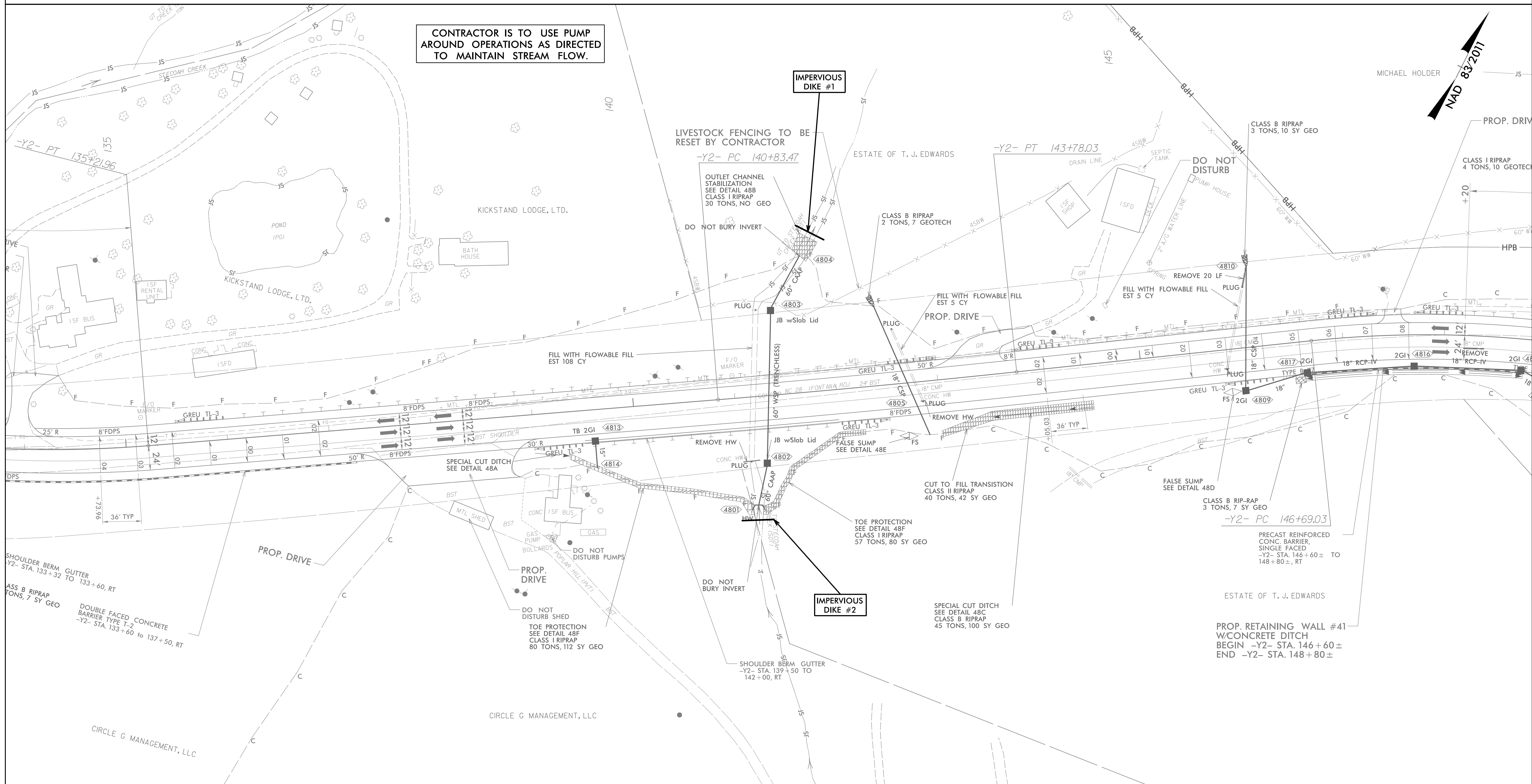


PROJECT REFERENCE NO.	SHEET NO.
A-0009CD	EC-08A/CONST.48
RW SHEET NO.	
ROADWAY DESIGN ENGINEER	HYDRAULICS ENGINEER

# CULVERT CONSTRUCTION SEQUENCE STA. 141+20 -Y2-

1. INSTALL IMPERVIOUS DIKES #1 & #2 AND BEGIN PUMP AROUND THROUGH EXISTING 60" CMP.
2. DEWATER WORK SITE AS NEEDED INTO SPECIAL STILLING BASIN(S).
3. INSTALL 60" WELDED STEEL PIPE USING TRENCHLESS INSTALLATION.
4. INSTALL JB W/SLAB LID #4802 & 60" CAAP.
5. INSTALL JB W/SLAB LID #4803 & 60" CAAP.
6. COMPLETE ANY NECESSARY INLET/OUTLET CHANNEL IMPROVEMENTS.
7. REMOVE IMPERVIOUS DIKES #1 & #2, SHIFTING FLOW INTO NEW PIPE SYSTEM.
8. PLUG AND FILL EXISTING 60" CMP.
9. REESTABLISH STREAM ACCORDING TO CONST. PLANS.
10. REMOVE ANY REMAINING SPECIAL STILLING BASINS.



CONTRACTOR IS TO USE PUMP AROUND OPERATIONS AS DIRECTED TO MAINTAIN STREAM FLOW.

NAD 83/2011

SHOULDER BERM GUTTER  
-Y2- STA. 133+32 TO 133+60, RT  
CLASS B RIPRAP  
3 TONS, 7 SY GEO

DOUBLE FACED CONCRETE  
BARRIER TYPE T-2  
-Y2- STA. 133+60 TO 137+50, RT

CIRCLE G MANAGEMENT, LLC

CIRCLE G MANAGEMENT, LLC