
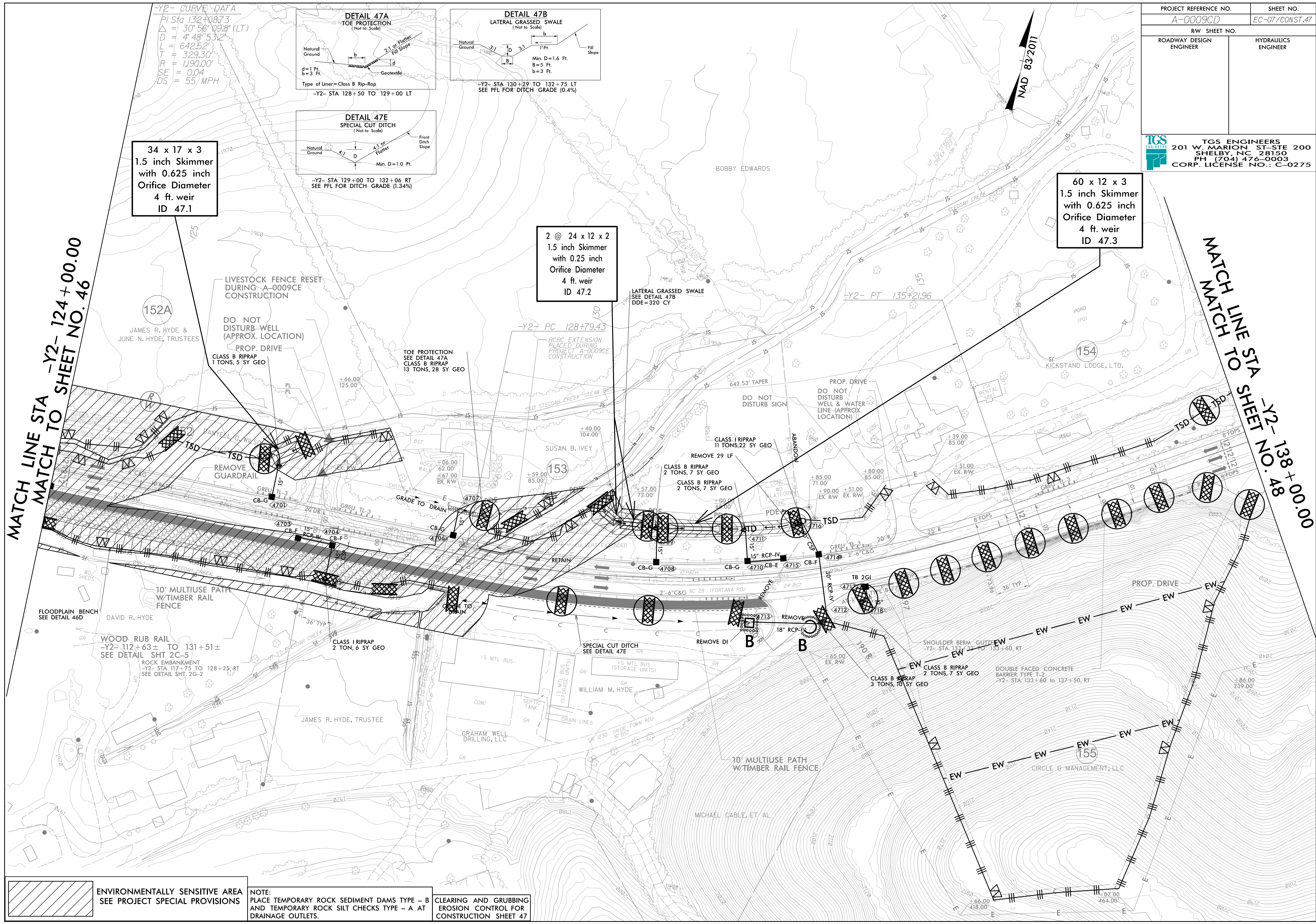


PROJECT REFERENCE NO. A-0009CD	SHEET NO. EC-07/CONST.47
RW SHEET NO.	
ROADWAY DESIGN ENGINEER	HYDRAULICS ENGINEER
 TGS ENGINEERS 201 W. MARION ST-STE 200 SHELBY, NC 28150 PH (704) 476-0003 CORP. LICENSE NO.: C-0275	

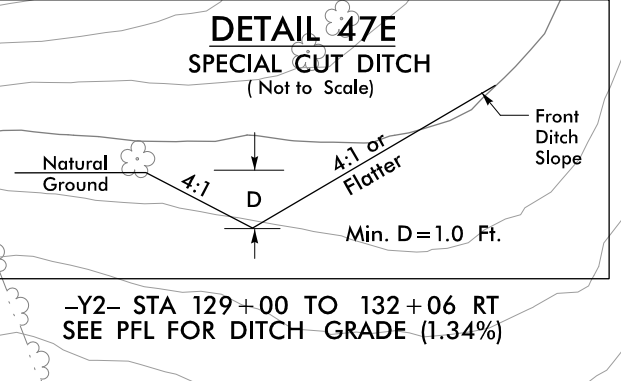
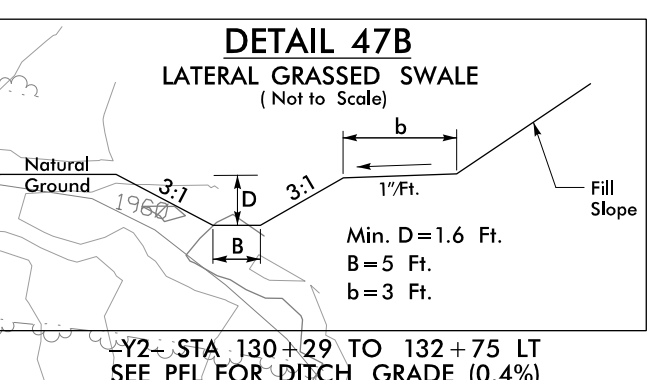
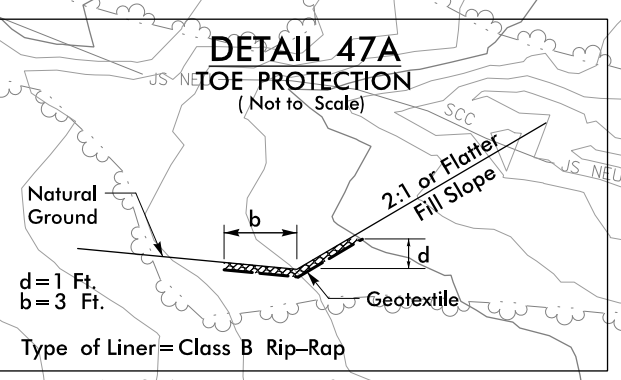


34 x 17 x 3
1.5 inch Skimmer
with 0.625 inch
Orifice Diameter
4 ft. weir
ID 47.1

2 @ 24 x 12 x 2
1.5 inch Skimmer
with 0.25 inch
Orifice Diameter
4 ft. weir
ID 47.2

60 x 12 x 3
1.5 inch Skimmer
with 0.625 inch
Orifice Diameter
4 ft. weir
ID 47.3

-Y2- CURVE DATA
 PI Sta 132+08.73
 $\Delta = 30^{\circ} 56' 09.8''$ (LT)
 $D = 4' 48'' 53.2''$
 $L = 642.52'$
 $T = 329.30'$
 $R = 1,190.00'$
 $SE = 0.04$
 $DS = 55$ MPH



MATCH LINE STA
MATCH TO SHEET NO. 46
-Y2- 124+00.00

MATCH LINE TO STA
MATCH TO SHEET NO. 48
-Y2- 138+00.00

 ENVIRONMENTALLY SENSITIVE AREA
SEE PROJECT SPECIAL PROVISIONS

NOTE:
PLACE TEMPORARY ROCK SEDIMENT DAMS TYPE - B
AND TEMPORARY ROCK SILT CHECKS TYPE - A AT
DRAINAGE OUTLETS.

CLEARING AND GRUBBING
EROSION CONTROL FOR
CONSTRUCTION SHEET 47