

5/28/2026

-Y2-

PROJECT REFERENCE NO. A-0009CD	SHEET NO. 76
ROADWAY DESIGN ENGINEER	HYDRAULICS ENGINEER
DOCUMENT NOT CONSIDERED FINAL UNLESS ALL SIGNATURES COMPLETED	
TGS ENGINEERS 201 W. MARION ST SHELBY, NC 28150 PH (704) 476-0003 CORP. LICENSE NO.: C-0275	

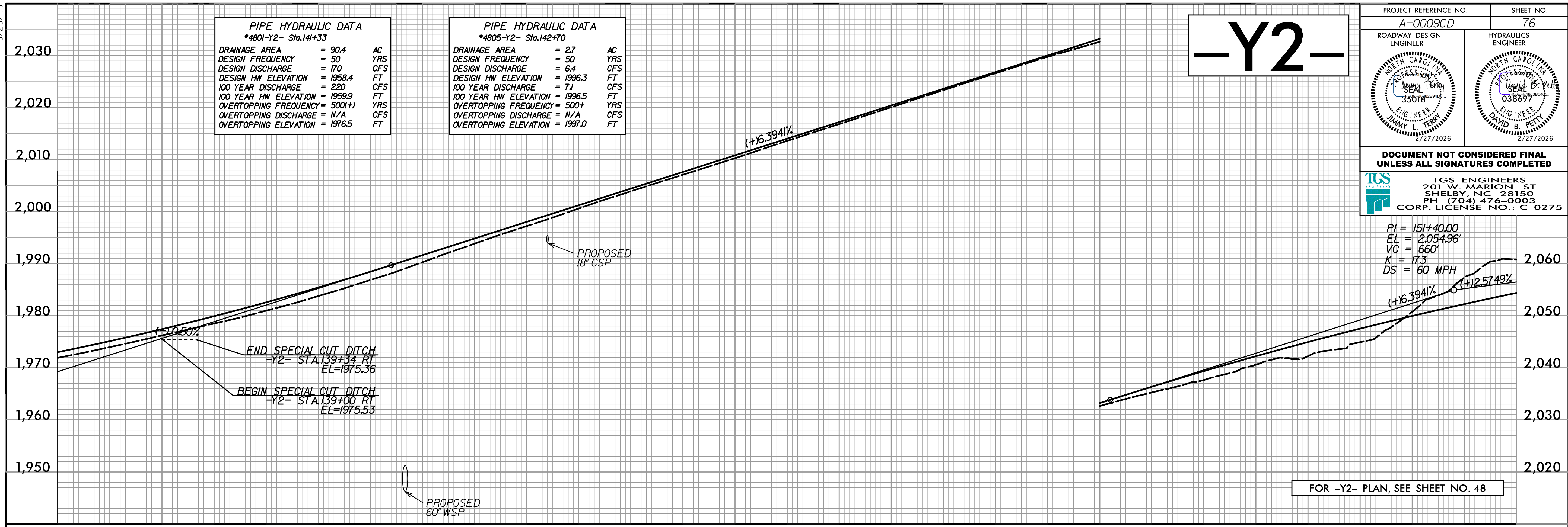
PIPE HYDRAULIC DATA
*4801-Y2- Sta.141+33

DRAINAGE AREA	= 90.4	AC
DESIGN FREQUENCY	= 50	YRS
DESIGN DISCHARGE	= 170	CFS
DESIGN HW ELEVATION	= 1958.4	FT
100 YEAR DISCHARGE	= 220	CFS
100 YEAR HW ELEVATION	= 1959.9	FT
OVERTOPPING FREQUENCY (500+)	= N/A	YRS
OVERTOPPING DISCHARGE	= N/A	CFS
OVERTOPPING ELEVATION	= 1976.5	FT

PIPE HYDRAULIC DATA
*4805-Y2- Sta.142+70

DRAINAGE AREA	= 27	AC
DESIGN FREQUENCY	= 50	YRS
DESIGN DISCHARGE	= 6.4	CFS
DESIGN HW ELEVATION	= 1996.3	FT
100 YEAR DISCHARGE	= 7.1	CFS
100 YEAR HW ELEVATION	= 1996.5	FT
OVERTOPPING FREQUENCY (500+)	= N/A	YRS
OVERTOPPING DISCHARGE	= N/A	CFS
OVERTOPPING ELEVATION	= 1997.0	FT

PI = 151+40.00
EL = 2,054.96'
VC = 660'
K = 173
DS = 60 MPH

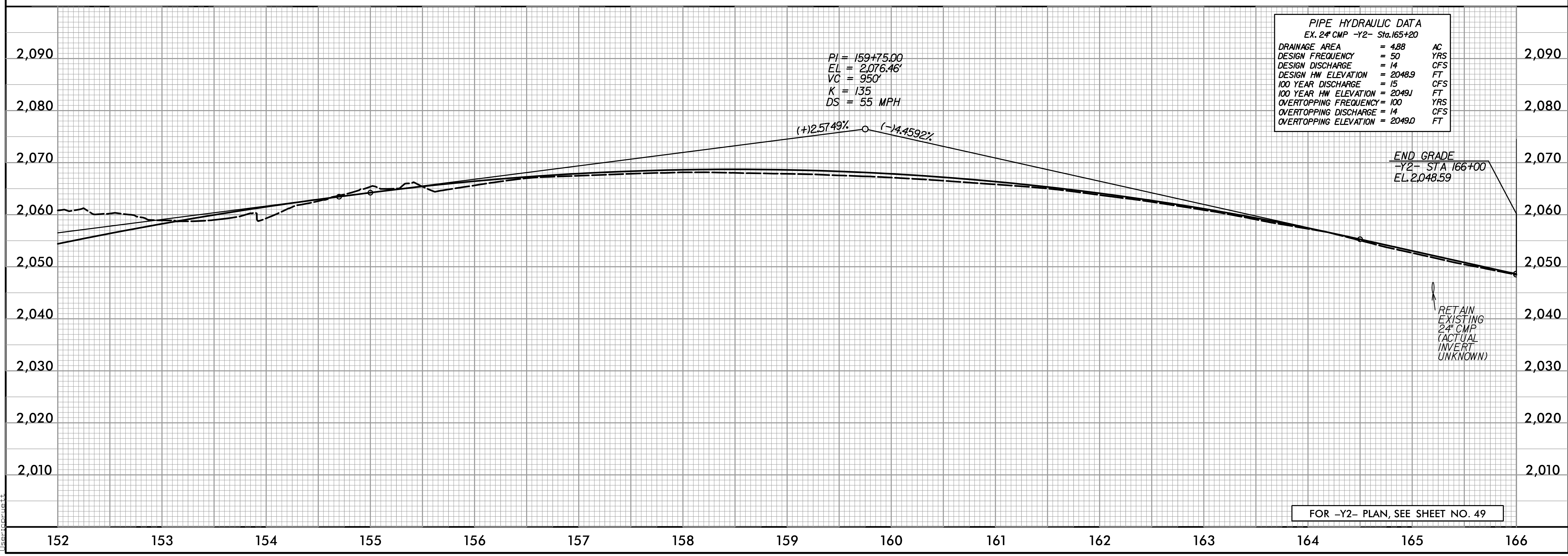


FOR -Y2- PLAN, SEE SHEET NO. 48

PIPE HYDRAULIC DATA
EX. 24" CMP -Y2- Sta.165+20

DRAINAGE AREA	= 4.88	AC
DESIGN FREQUENCY	= 50	YRS
DESIGN DISCHARGE	= 14	CFS
DESIGN HW ELEVATION	= 2048.9	FT
100 YEAR DISCHARGE	= 15	CFS
100 YEAR HW ELEVATION	= 2049.1	FT
OVERTOPPING FREQUENCY (100)	= 100	YRS
OVERTOPPING DISCHARGE	= 14	CFS
OVERTOPPING ELEVATION	= 2049.0	FT

PI = 159+75.00
EL = 2,076.46'
VC = 950'
K = 135
DS = 55 MPH



FOR -Y2- PLAN, SEE SHEET NO. 49

I:\Projects\A-0009\Roadway\Proj\A-0009CD\Plan_Sheets\A-0009CD_Rdy_pfl_Sheets.dgn