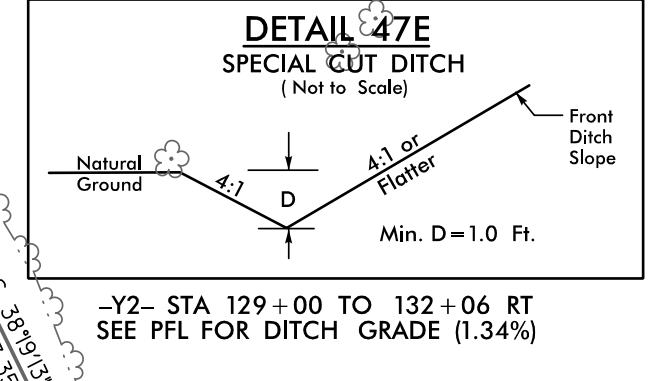
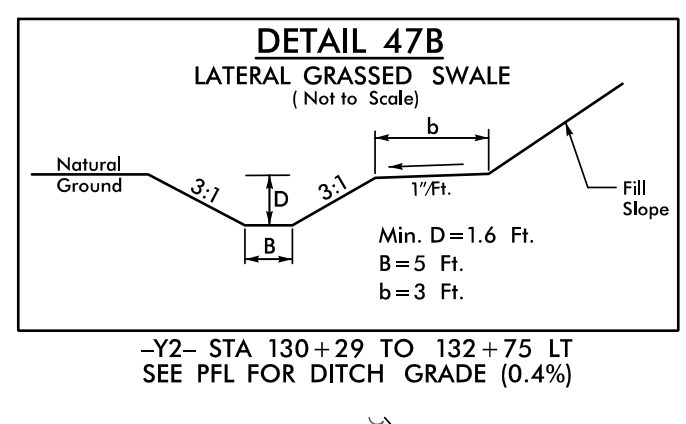
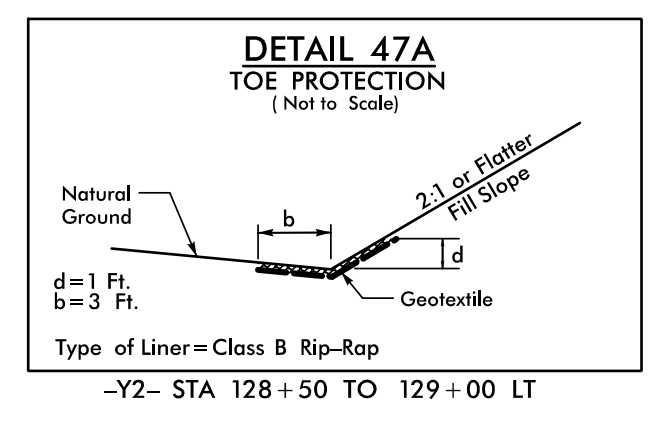
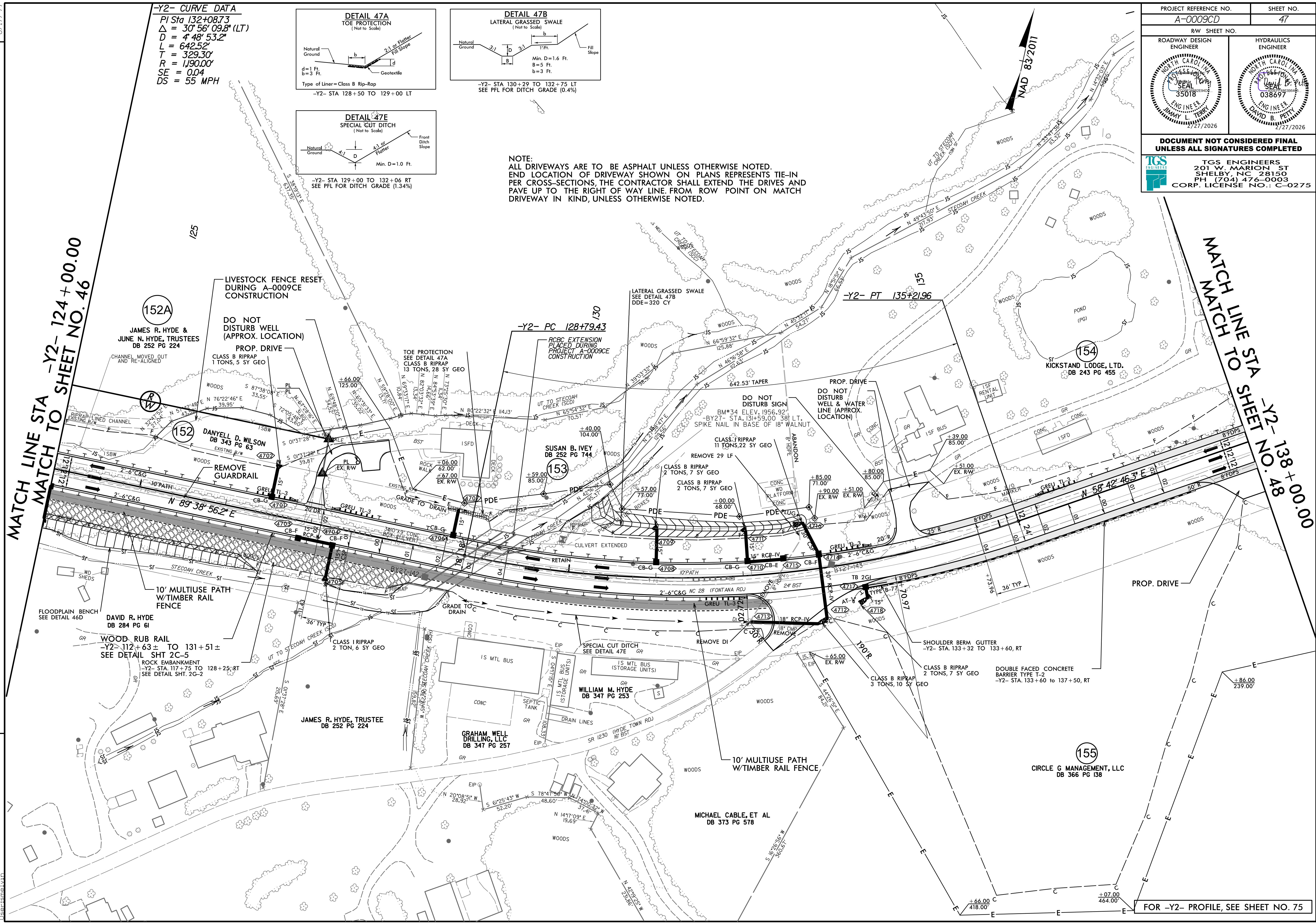


PROJECT REFERENCE NO. A-0009CD		SHEET NO. 47	
RW SHEET NO.		HYDRAULICS ENGINEER	
ROADWAY DESIGN ENGINEER		ENGINEER	
DOCUMENT NOT CONSIDERED FINAL UNLESS ALL SIGNATURES COMPLETED			
 TGS ENGINEERS 201 W. MARION ST SHELBY, NC 28150 PH (704) 476-0003 CORP. LICENSE NO.: C-0275			

**-Y2- CURVE DATA**  
 PI Sta 132+08.73  
 $\Delta = 30^\circ 56' 09.8" (LT)$   
 $D = 4^\circ 48' 53.2"$   
 $L = 642.52'$   
 $T = 329.30'$   
 $R = 1,190.00'$   
 $SE = 0.04$   
 $DS = 55 MPH$



**NOTE:**  
 ALL DRIVEWAYS ARE TO BE ASPHALT UNLESS OTHERWISE NOTED.  
 END LOCATION OF DRIVEWAY SHOWN ON PLANS REPRESENTS TIE-IN PER CROSS-SECTIONS, THE CONTRACTOR SHALL EXTEND THE DRIVES AND PAVE UP TO THE RIGHT OF WAY LINE FROM ROW POINT ON MATCH DRIVEWAY IN KIND, UNLESS OTHERWISE NOTED.



MATCH LINE STA -Y2- 124+00.00  
 MATCH TO SHEET NO. 46

MATCH LINE STA SHEET -Y2- 138+00.00  
 MATCH TO SHEET NO. 48

FOR -Y2- PROFILE, SEE SHEET NO. 75

REVISIONS

2/24/2026 A-0009CD\Roadway\Proj\A-0009CD\_Plan\_Sheets\A-0009CD\_Rdw\_psh\_47.dgn  
 1/15/2026 A-0009CD\Roadway\Proj\A-0009CD\_Plan\_Sheets\A-0009CD\_Rdw\_psh\_47.dgn  
 1/15/2026 A-0009CD\Roadway\Proj\A-0009CD\_Plan\_Sheets\A-0009CD\_Rdw\_psh\_47.dgn