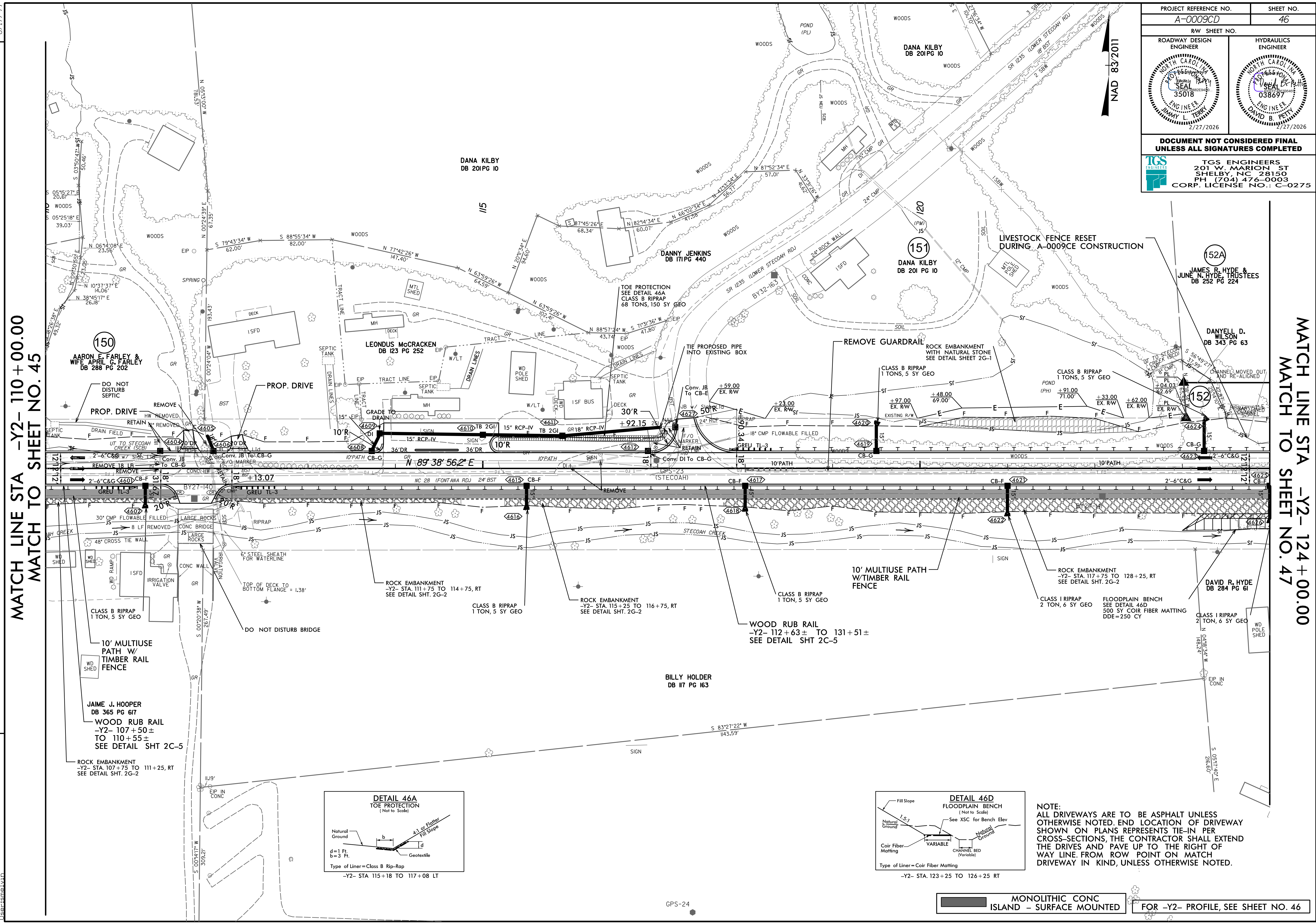


PROJECT REFERENCE NO. A-0009CD		SHEET NO. 46	
RW SHEET NO.		HYDRAULICS ENGINEER	
ROADWAY DESIGN ENGINEER		ENGINEER	
DOCUMENT NOT CONSIDERED FINAL UNLESS ALL SIGNATURES COMPLETED			
TGS ENGINEERS 201 W. MARION ST SHELBY, NC 28150 PH: (704) 476-0003 CORP. LICENSE NO.: C-0275			

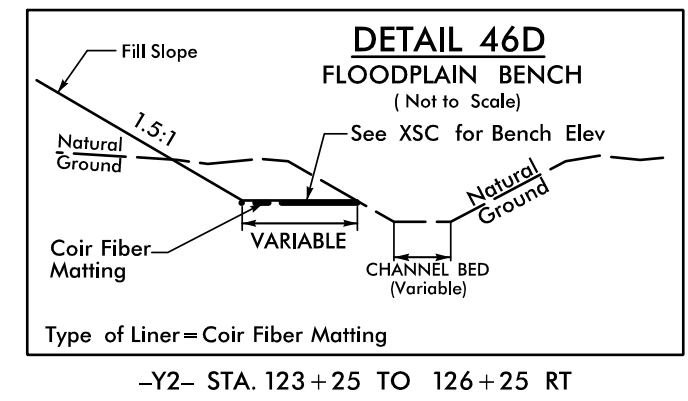
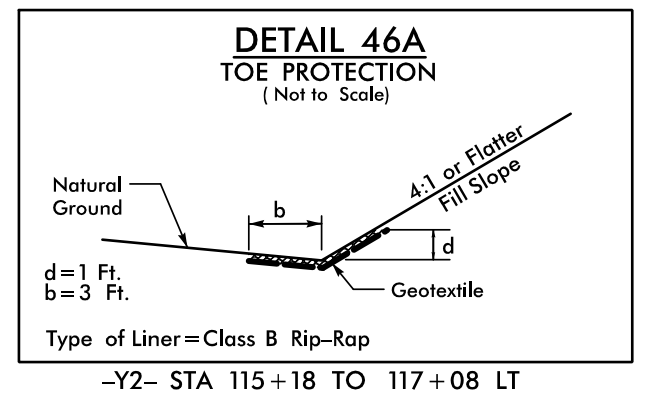


MATCH LINE STA -Y2- 110 + 00.00
 MATCH TO SHEET NO. 45

MATCH LINE STA -Y2- 124 + 00.00
 MATCH TO SHEET NO. 47

REVISIONS

8/17/99
 Sheets\A-0009CD_Rdy_psh_46.dgn
 2/24/2016
 A-0009CD\Roadway\Proj\A-0009CD_Plan
 1/16/2016



NOTE:
ALL DRIVEWAYS ARE TO BE ASPHALT UNLESS OTHERWISE NOTED. END LOCATION OF DRIVEWAY SHOWN ON PLANS REPRESENTS TIE-IN PER CROSS-SECTIONS, THE CONTRACTOR SHALL EXTEND THE DRIVES AND PAVE UP TO THE RIGHT OF WAY LINE. FROM ROW POINT ON MATCH DRIVEWAY IN KIND, UNLESS OTHERWISE NOTED.

MONOLITHIC CONC ISLAND - SURFACE MOUNTED
 FOR -Y2- PROFILE, SEE SHEET NO. 46