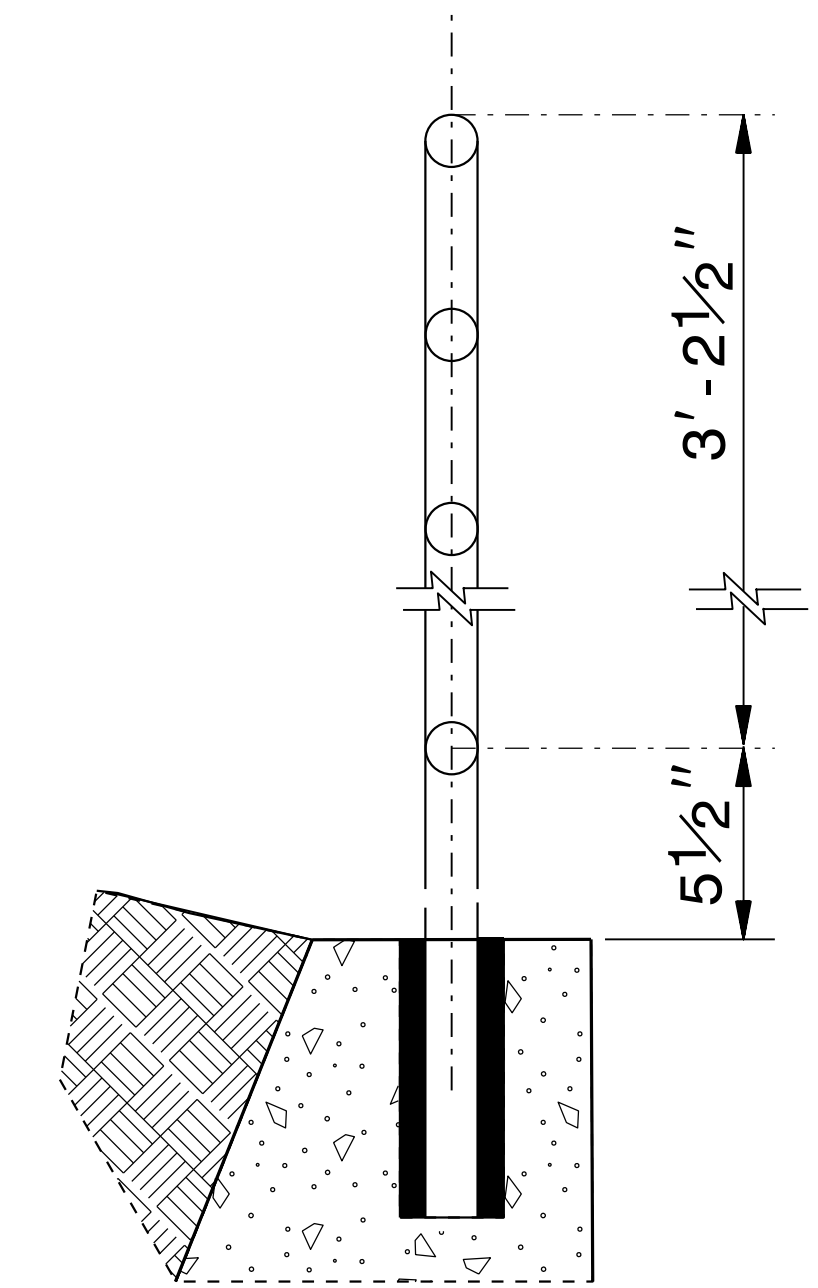


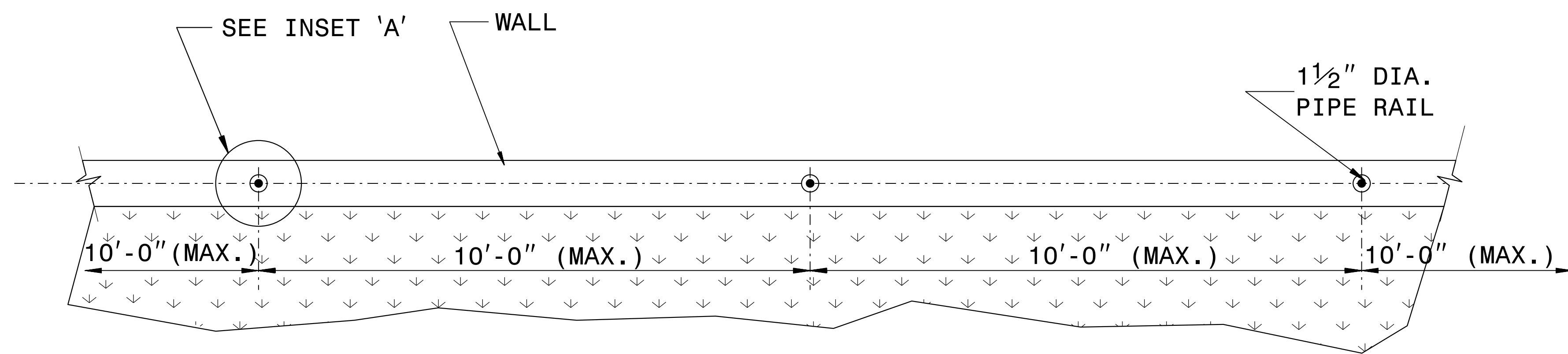
ELEVATION OF HANDRAIL



INSET 'A'

NOTES:

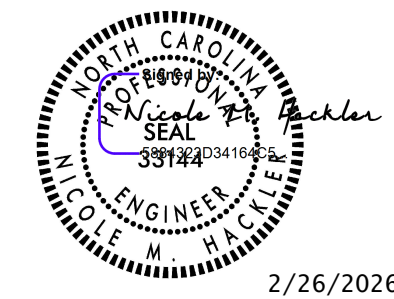
- CONSTRUCT PROPOSED STEEL PIPE RAIL 1 1/2" DIAMETER SCHEDULE 40 PLAIN END GALVANIZED STEEL PIPE MEETING THE REQUIREMENTS OF ASTM A53.
- EMBED PIPE RAIL INTO PROPOSED WALL WITH CHEMICAL OR CONCRETE GROUT ANCHORING SYSTEM PER THE WALL MANUFACTURER'S RECOMMENDATIONS.
- REPAIR GALVANIZING IN ACCORDANCE WITH SECTION 1076 OF THE NCDOT STANDARD SPECIFICATIONS.
- PAINT, IF REQUIRED BY THE ENGINEER, IN ACCORDANCE WITH SECTION 1080 OF THE STANDARD SPECIFICATIONS.
- CENTER THE PROPOSED RAILING ON TOP OF THE WALL WITH POST SPACING SYMMETRICAL ABOUT THE CENTER-LINE OF THE WALL.
- WELD IN ACCORDANCE WITH ARTICLE 1072-18 OF THE STANDARD SPECIFICATIONS.
- SUBMIT THE ATTACHMENT OF THE HANDRAIL TO THE RETAINING WALL TO THE CONTRACTS AND STANDARDS OFFICE FOR APPROVAL.



PLAN VIEW

24-MAY-2018 14:10 S:\Contracts\Special Details\Howerton\Handrail on Retaining Wall.dgn jhowerton AT USD-292595

DOCUMENT NOT CONSIDERED FINAL UNLESS ALL SIGNATURES COMPLETED



2/26/2026

CONTRACT STANDARDS AND DEVELOPMENT UNIT	
Office 919-707-6950 FAX 919-250-4119	
DETAIL OF PIPE HANDRAIL MOUNTED ON A WALL	
ORIGINAL BY: E.E. WARD	DATE: 12-99
MODIFIED BY:	DATE:
CHECKED BY:	DATE:
FILE SPEC.: jhowerton/handrail_on_retaining_wall.dgn	