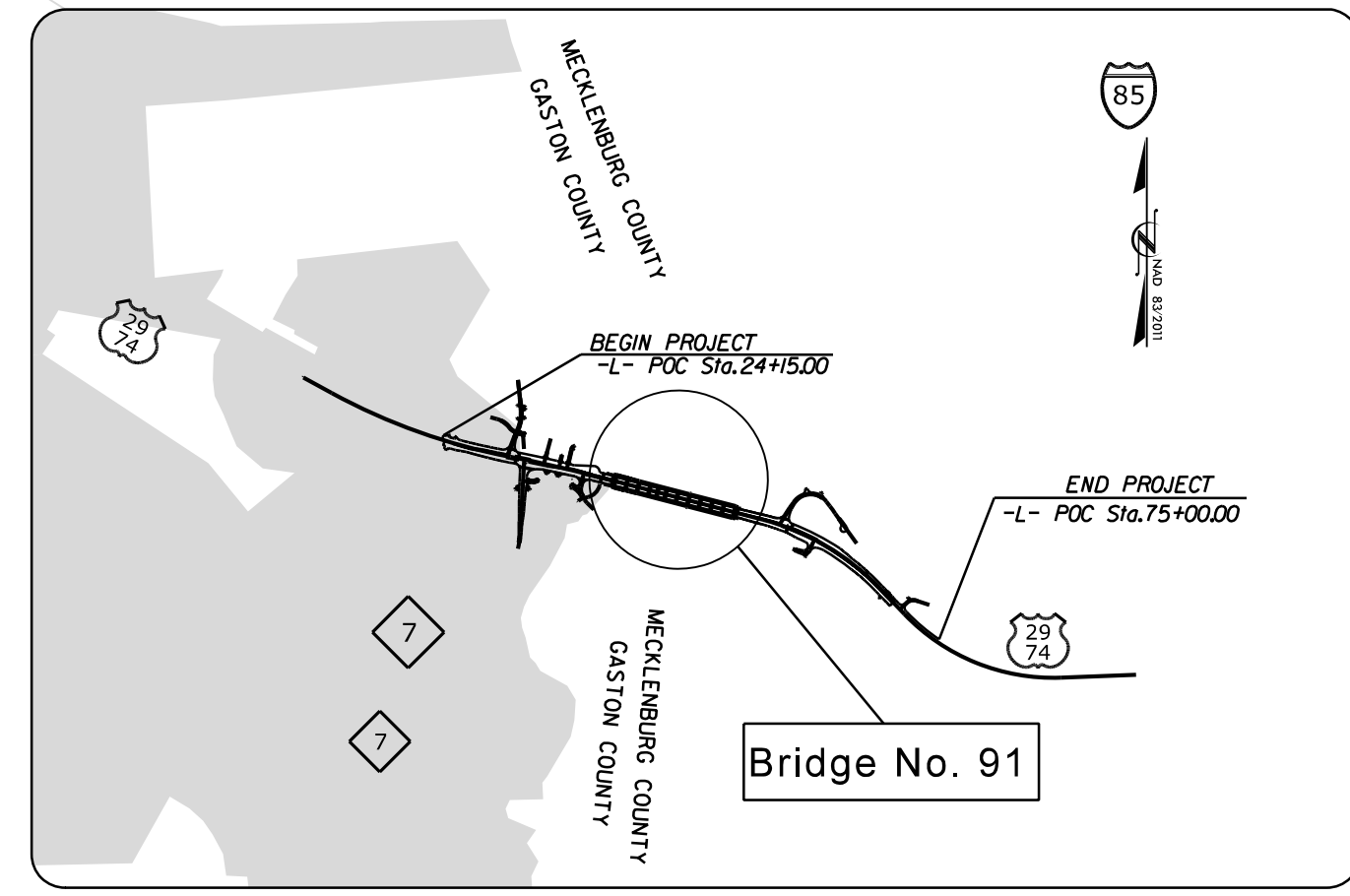


STATE OF NORTH CAROLINA
DIVISION OF HIGHWAYS

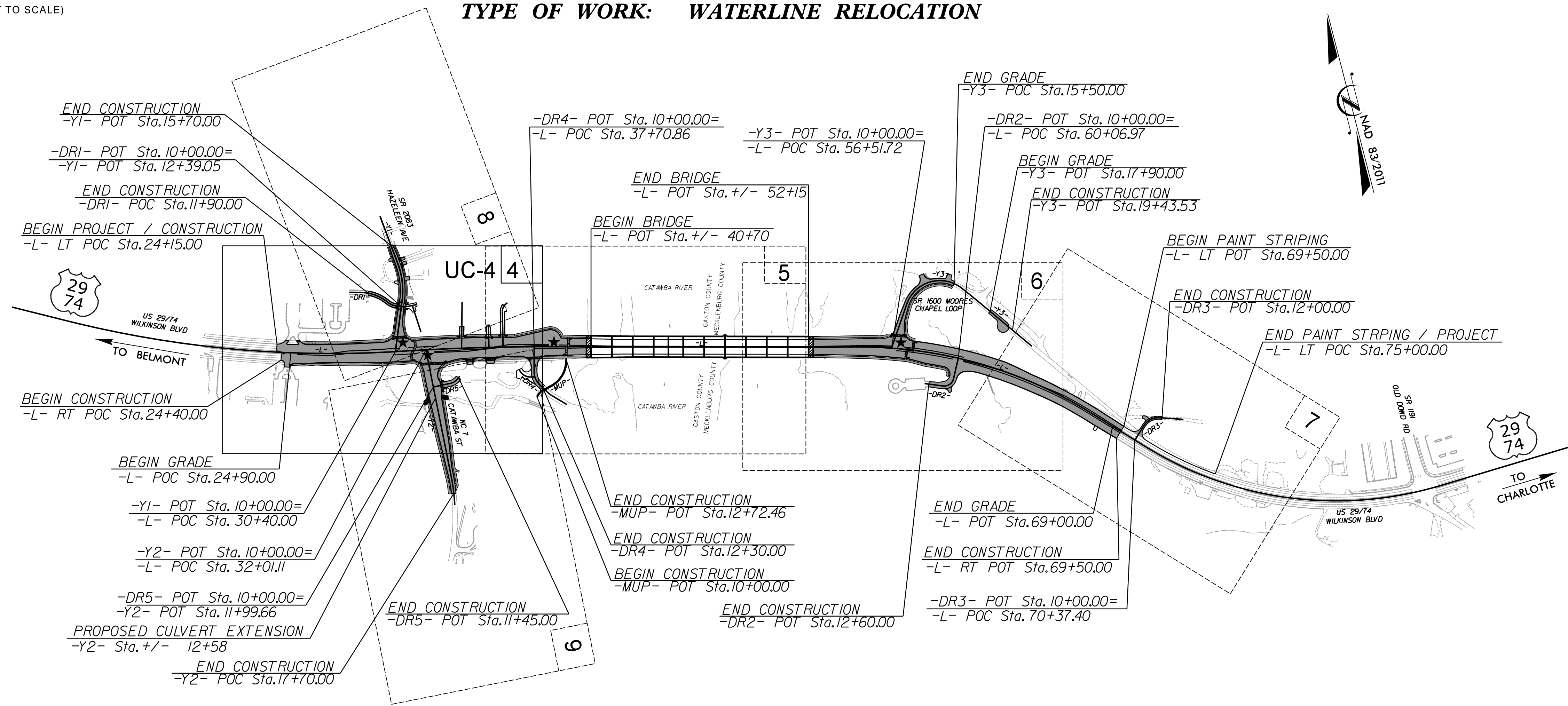
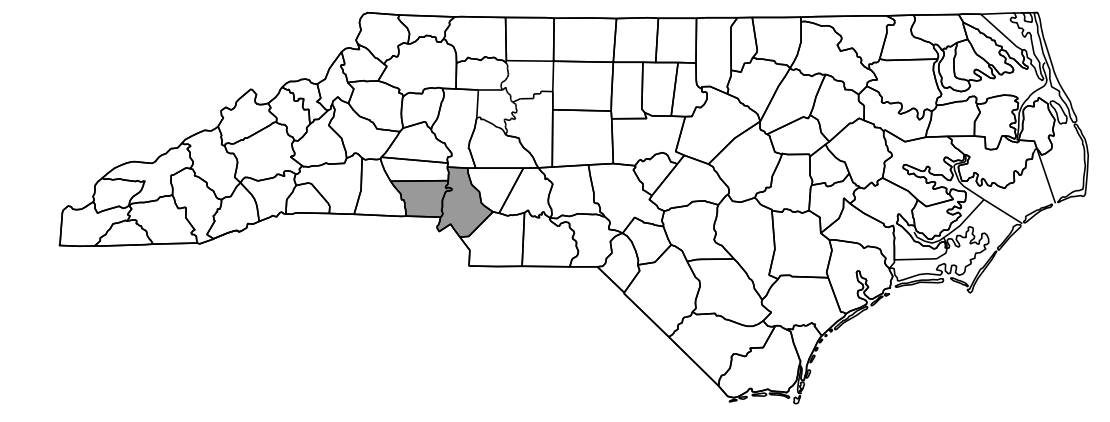
UTILITY CONSTRUCTION PLANS GASTON/MECKLENBURG COUNTY

**LOCATION: BRIDGE NO. 91 OVER CATAWBA RIVER
ON US 29 /US 74 AND INTERSECTION
IMPROVEMENTS ON US 29 /US 74
(WILKINSON BLVD) AND NC 7 (CATAWBA ST)**

TYPE OF WORK: WATERLINE RELOCATION

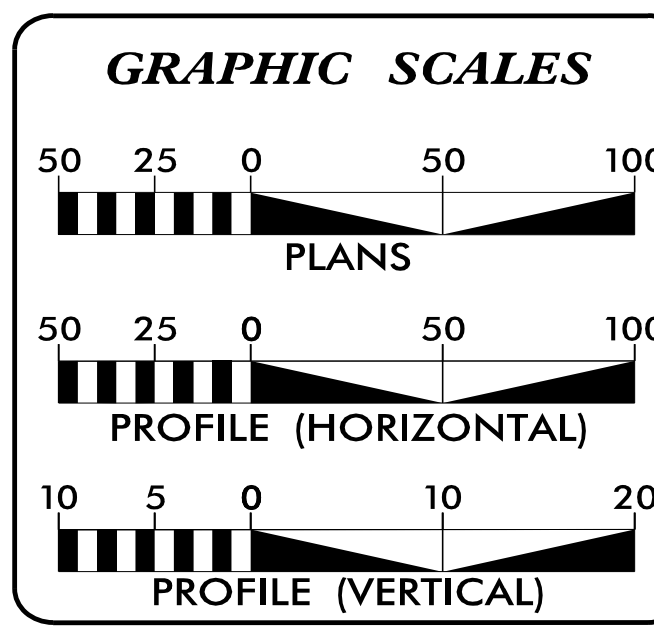


VICINITY MAP
(NOT TO SCALE)



DOCUMENT NOT CONSIDERED FINAL
UNTIL ALL SIGNATURES ARE COMPLETED

CONTRACT NO: C204773 **TIP PROJECT: B-6051 /U-6143**



INDEX OF SHEETS

SHEET NO.:	DESCRIPTION:
UC-1	TITLE SHEET
UC-2	UTILITY SYMBOLOGY
UC-3	NOTES
UC-3A	DETAILS
UC-4	UTILITY CONSTRUCTION SHEET
UC-5	PROFILE SHEET

**WATER OWNERS
ON PROJECT**

WATER - CITY OF BELMONT

PREPARED IN THE OFFICE OF

RK&K 8601 SIX FORKS ROAD, FORUM 1, SUITE 700
RALEIGH, NORTH CAROLINA 27615
NC LICENSE NO. F-0112
1-888-521-4455 OR 919-878-9560

FOR NORTH CAROLINA
DEPARTMENT OF TRANSPORTATION

BRYAN BADEY, PE CONSULTANT CONTACT #1
MARIKO PYATT, PE CONSULTANT CONTACT #2
ERIKA WIGGS CONSULTANT CONTACT #3

SEAL

4/9/2026

**DIVISION OF HIGHWAYS
UTILITIES UNIT**
1555 MAIL SERVICES CENTER
RALEIGH, NC 27699-1555
PHONE (919) 707-6690
FAX (919) 250-4151

DONALD HAMPTON UTILITIES REGIONAL ENGINEER
JONG-TAE YOON, PE UTILITIES ENGINEER
DAYTON C. MARTIN UTILITIES AREA COORDINATOR
STEVE TREXLER UTILITIES COORDINATOR

STATE OF NORTH CAROLINA DIVISION OF HIGHWAYS

UTILITIES PLAN SHEET SYMBOLS

PROPOSED WATER SYMBOLS

Water Line (Sized as Shown)	
11¼ Degree Bend	
22½ Degree Bend	
45 Degree Bend	
90 Degree Bend	
Plug	
Tee	
Cross	
Reducer	
Gate Valve	
Butterfly Valve	
Tapping Valve	
Line Stop	
Line Stop with Bypass	
Blow Off	
Fire Hydrant	
Relocate Fire Hydrant	
Remove Fire Hydrant	REM FH
Water Meter	
Relocate Water Meter	
Remove Water Meter	REM WM
Water Pump Station	
RPZ Backflow Preventer	
DCV Backflow Preventer	
Relocate RPZ Backflow Preventer	
Relocate DCV Backflow Preventer	

PROPOSED SEWER SYMBOLS

Gravity Sewer Line (Sized as Shown)	
Force Main Sewer Line (Sized as Shown)	
Manhole (Sized per Note)	
Sewer Pump Station	

PROPOSED MISCELLANEOUS UTILITIES SYMBOLS

Power Pole	
Telephone Pole	
Joint Use Pole	
Telephone Pedestal	
Utility Line by Others (Type as Shown)	
Trenchless Installation	
Encasement by Open Cut	
Encasement	
Underground Conduit	

Thrust Block	
Air Release Valve	
Utility Vault	
Concrete Pier	
Steel Pier	
Plan Note	
Pay Item Note	

EXISTING UTILITIES SYMBOLS

Power Pole		*Underground Power Line	
Telephone Pole		*Underground Telephone Cable	
Joint Use Pole		*Underground Telephone Conduit	
Utility Pole		*Underground Fiber Optics Telephone Cable	
Utility Pole with Base		*Underground TV Cable	
H-Frame Pole		*Underground Fiber Optics TV Cable	
Power Transmission Line Tower		*Underground Gas Pipeline	
Water Manhole		Aboveground Gas Pipeline	
Power Manhole		*Underground Water Line	
Telephone Manhole		Aboveground Water Line	
Sanitary Sewer Manhole		*Underground Gravity Sanitary Sewer Line	
Hand Hole for Cable		Aboveground Gravity Sanitary Sewer Line	
Power Transformer		*Underground SS Forced Main Line	
Telephone Pedestal		Underground Unknown Utility Line	
CATV Pedestal		SUE Test Hole	
Gas Valve		Water Meter	
Gas Meter		Water Valve	
Located Miscellaneous Utility Object		Fire Hydrant	
Abandoned According to Utility Records	AATUR	Sanitary Sewer Cleanout	
End of Information	E.O.I.		

*For Existing Utilities
 Utility Line Drawn from Record (Type as Shown)
 Designated Utility Line (Type as Shown)

4/9/2026 10:00:00 AM C:\Cloud\Projects\2017\17248_S1r-OnCall\0300_Goston_91_BR-0020\Design\Utilities\Engineering\UC\Pro\Plans\B-6051_Ut_UC03.nott.es.dgn

UTILITY CONSTRUCTION

PROJECT REFERENCE NO. B-6051/ U-6143	SHEET NO. UC-3
DESIGNED BY: E.J.W.	
DRAWN BY: E.J.W.	
CHECKED BY: B.M.B.	
APPROVED BY: B.M.B.	
REVISED:	
NORTH CAROLINA DEPARTMENT OF TRANSPORTATION UTILITIES ENGINEERING SEC. PHONE: (919) 707-6690 FAX: (919) 250-4151	

GENERAL NOTES:

1. THE PROPOSED UTILITY CONSTRUCTION SHALL MEET THE APPLICABLE REQUIREMENTS OF THE NC DEPARTMENT OF TRANSPORTATION'S "STANDARD SPECIFICATIONS FOR ROADS AND STRUCTURES" DATED JANUARY 2024.
2. THE EXISTING UTILITIES BELONG TO CITY OF BELMONT .
3. ALL WATER LINES TO BE INSTALLED WITHIN COMPLIANCE OF THE RULES AND REGULATIONS OF THE NORTH CAROLINA DEPARTMENT OF ENVIRONMENTAL QUALITY, DIVISION OF WATER RESOURCES, PUBLIC WATER SUPPLY SECTION. ALL SEWER LINES TO BE INSTALLED WITHIN COMPLIANCE OF THE RULES AND REGULATIONS OF THE NORTH CAROLINA DEPARTMENT OF ENVIRONMENT QUALITY, DIVISION OF WATER RESOURCES, WATER QUALITY SECTION. PERFORM ALL WORK IN ACCORDANCE WITH THE APPLICABLE PLUMBING CODES.
4. THE UTILITY OWNER OWNS THE EXISTING UTILITY FACILITIES AND WILL OWN THE NEW UTILITY FACILITIES AFTER ACCEPTANCE BY THE DEPARTMENT. THE DEPARTMENT OWNS THE CONSTRUCTION CONTRACT AND HAS ADMINISTRATIVE AUTHORITY. COMMUNICATIONS AND DECISIONS BETWEEN THE CONTRACTOR AND UTILITY OWNER ARE NOT BINDING UPON THE DEPARTMENT OR THIS CONTRACT UNLESS AUTHORIZED BY THE ENGINEER. AGREEMENTS BETWEEN THE UTILITY OWNER AND CONTRACTOR FOR THE WORK THAT IS NOT PART OF THIS CONTRACT OR IS SECONDARY TO THIS CONTRACT ARE ALLOWED, BUT ARE NOT BINDING UPON THE DEPARTMENT.
5. PROVIDE ACCESS FOR THE DEPARTMENT PERSONNEL AND THE OWNER'S REPRESENTATIVES TO ALL PHASES OF CONSTRUCTION. NOTIFY DEPARTMENT PERSONNEL AND THE UTILITY OWNER TWO WEEKS PRIOR TO COMMENCEMENT OF ANY WORK AND ONE WEEK PRIOR TO SERVICE INTERRUPTION. KEEP UTILITY OWNERS' REPRESENTATIVES INFORMED OF WORK PROGRESS AND PROVIDE OPPORTUNITY FOR INSPECTION OF CONSTRUCTION AND TESTING.

6. THE PLANS DEPICT THE BEST AVAILABLE INFORMATION FOR THE LOCATION, SIZE, AND TYPE OF MATERIAL FOR ALL EXISTING UTILITIES. MAKE INVESTIGATIONS FOR DETERMINING THE EXACT LOCATION, SIZE, AND TYPE MATERIAL OF THE EXISTING FACILITIES AS NECESSARY FOR THE CONSTRUCTION OF THE PROPOSED UTILITIES AND FOR AVOIDING DAMAGE TO EXISTING FACILITIES. REPAIR ANY DAMAGE INCURRED TO EXISTING FACILITIES TO THE ORIGINAL OR BETTER CONDITION AT NO ADDITIONAL COST TO THE DEPARTMENT.
7. MAKE FINAL CONNECTIONS OF THE NEW WORK TO THE EXISTING SYSTEM WHERE INDICATED ON THE PLANS, AS REQUIRED TO FIT THE ACTUAL CONDITIONS, OR AS DIRECTED.
8. MAKE CONNECTIONS BETWEEN EXISTING AND PROPOSED UTILITIES AT TIMES MOST CONVENIENT TO THE PUBLIC, WITHOUT ENDANGERING THE UTILITY SERVICE, AND IN ACCORDANCE WITH THE UTILITY OWNER'S REQUIREMENTS. MAKE CONNECTIONS ON WEEKENDS, AT NIGHT, AND ON HOLIDAYS IF NECESSARY.
9. ALL UTILITY MATERIALS SHALL BE APPROVED PRIOR TO DELIVERY TO THE PROJECT. SEE 1500-7, " SUBMITTALS AND RECORDS" IN SECTION 1500 OF THE STANDARD SPECIFICATIONS.

LIST OF PROJECT DETAILS

- VALVE BOX INSTALLATION AND EXTENSION
- 5 1/4" VALVE BOX
- STANDARD VERTICAL BEND
- TRENCH BOTTOM
- STANDARD FIRE HYDRANT
- THRUST BLOCKING
- THRUST BLOCKING DESIGN

UTILITY CONSTRUCTION

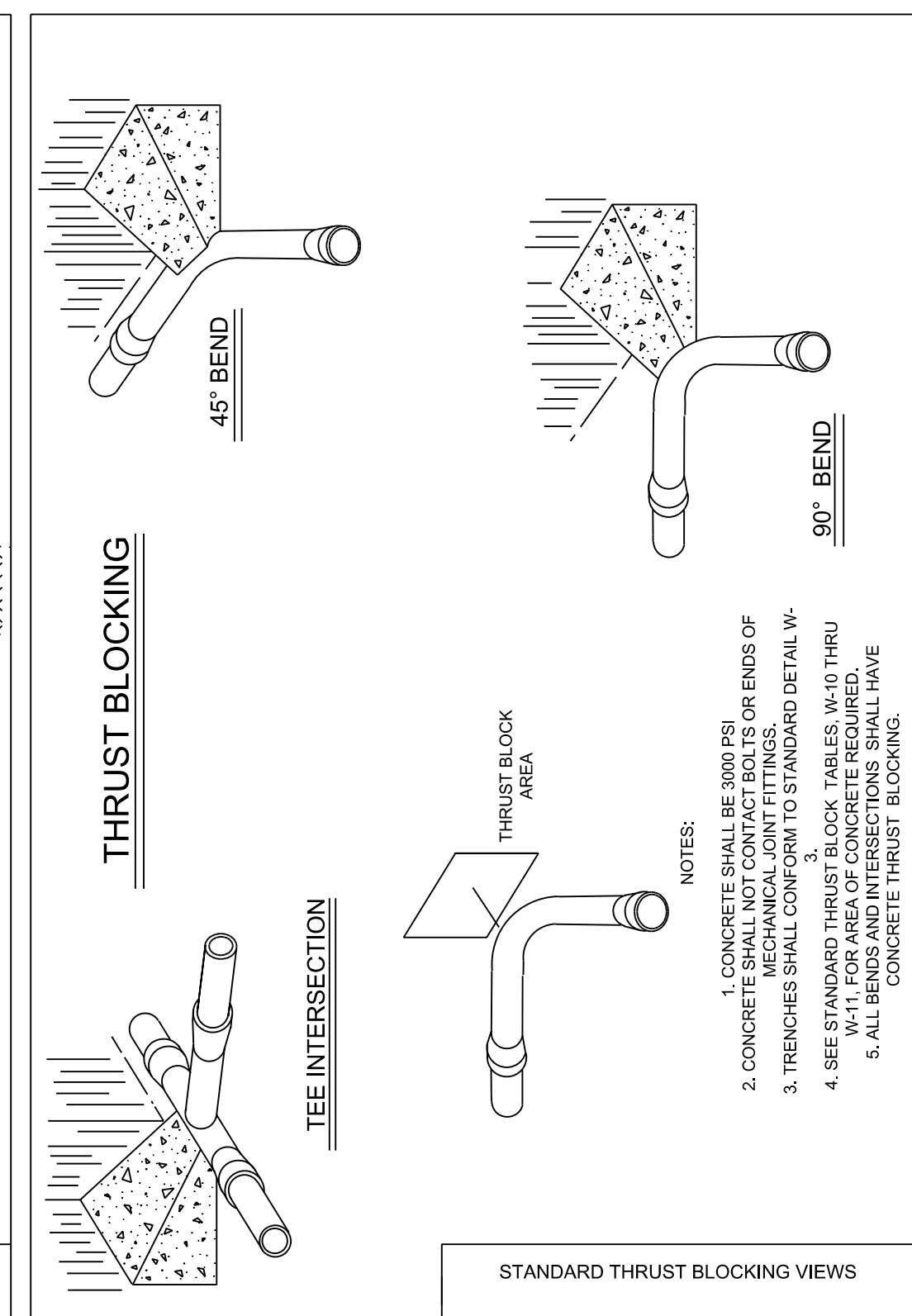
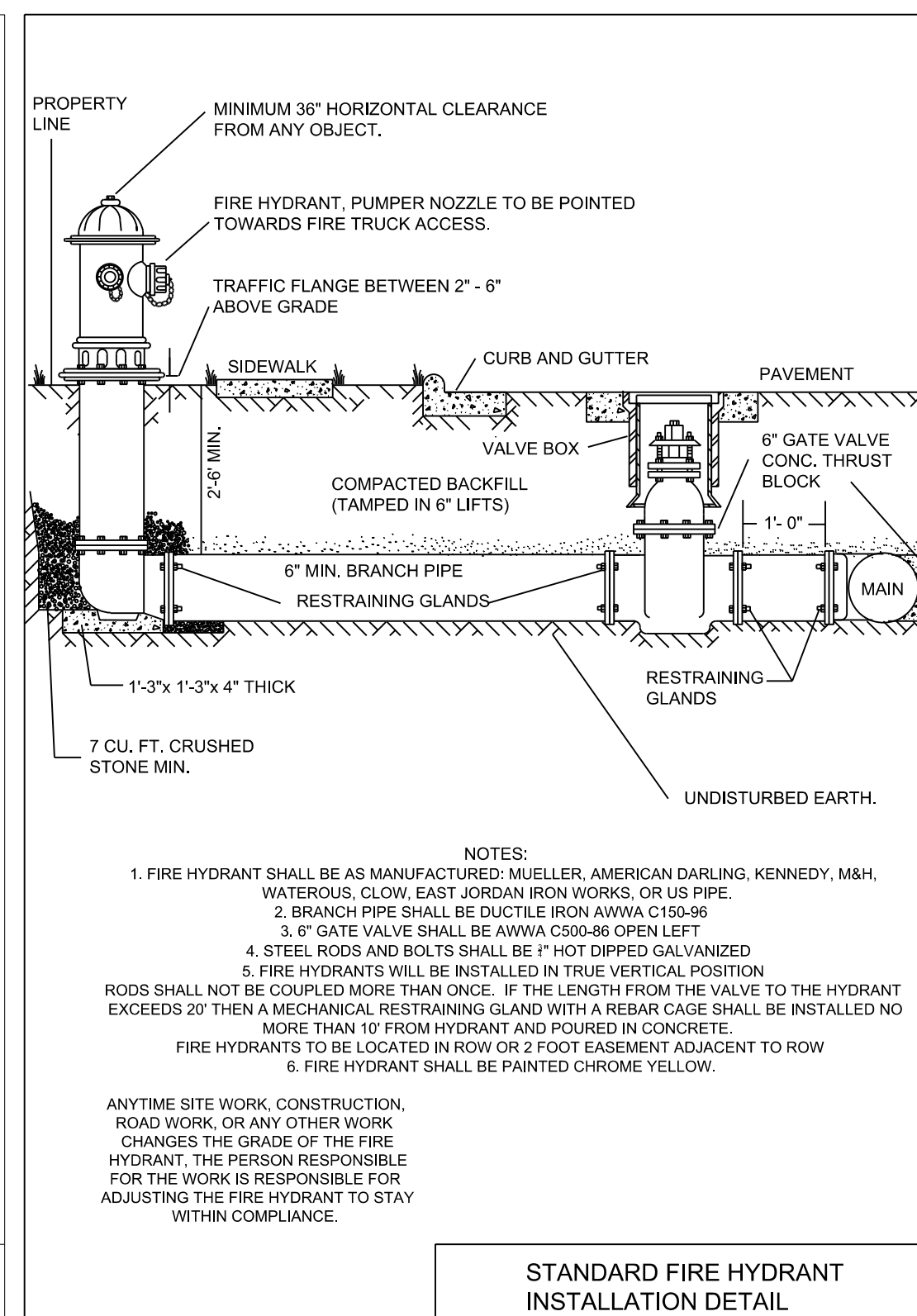
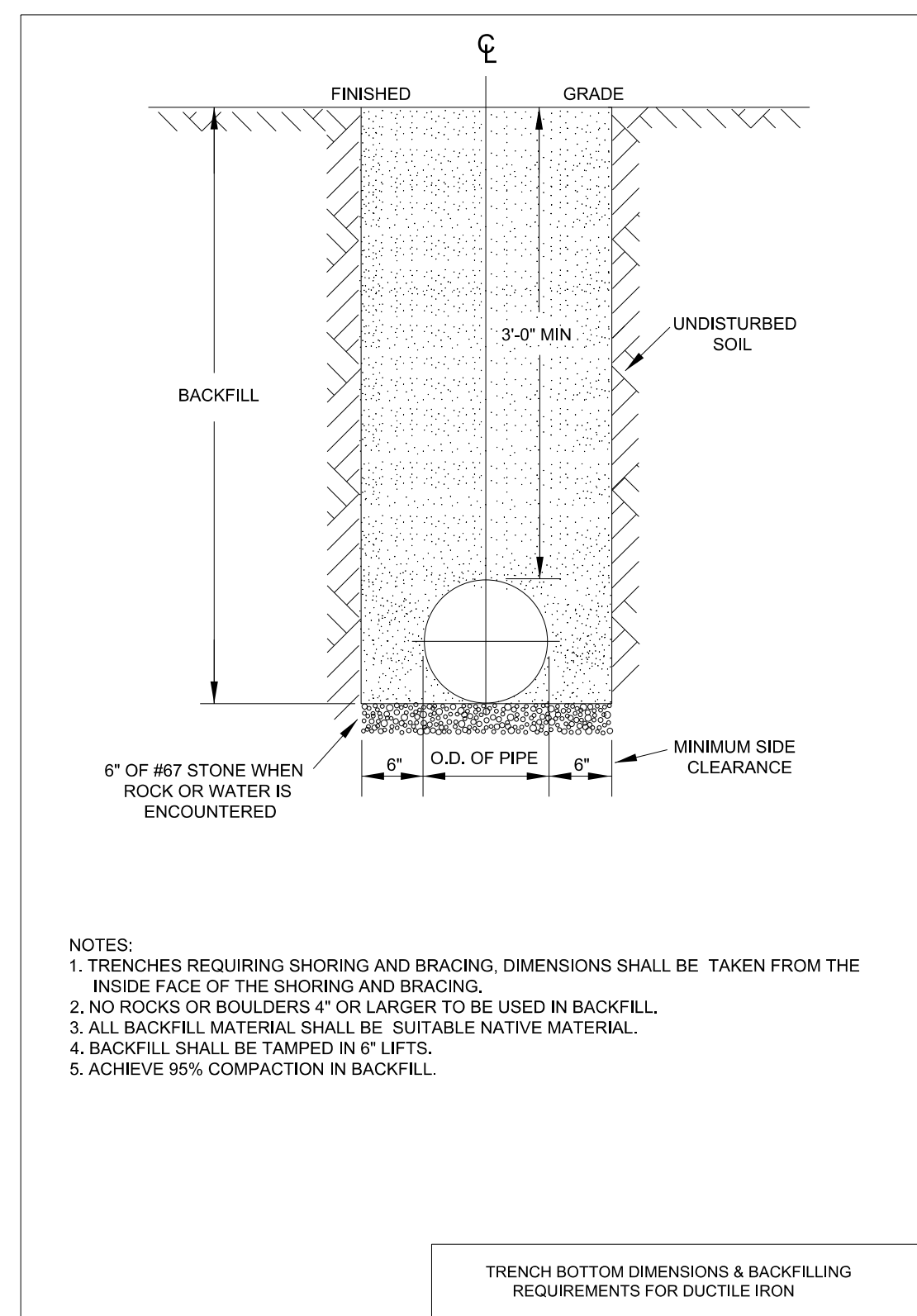
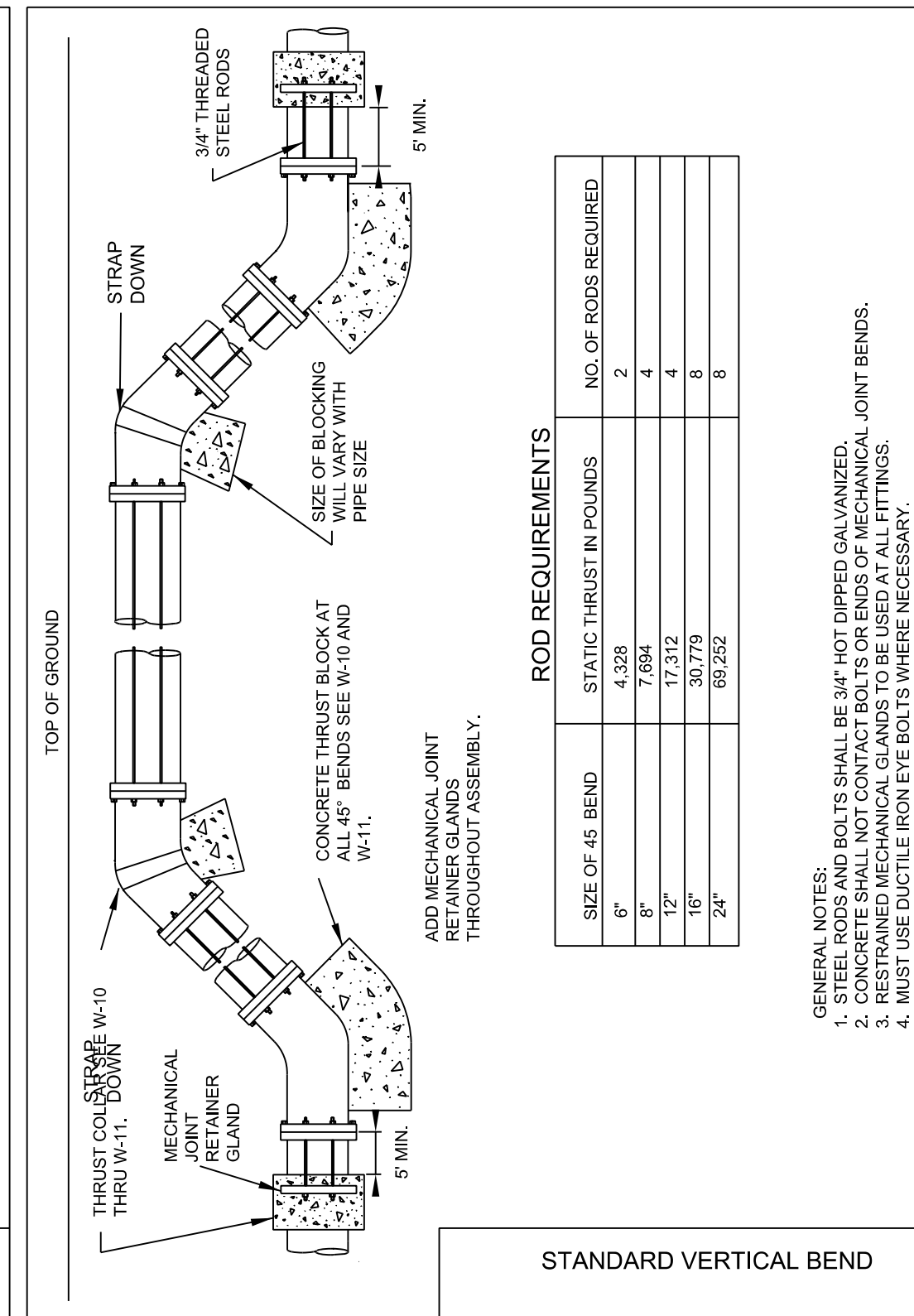
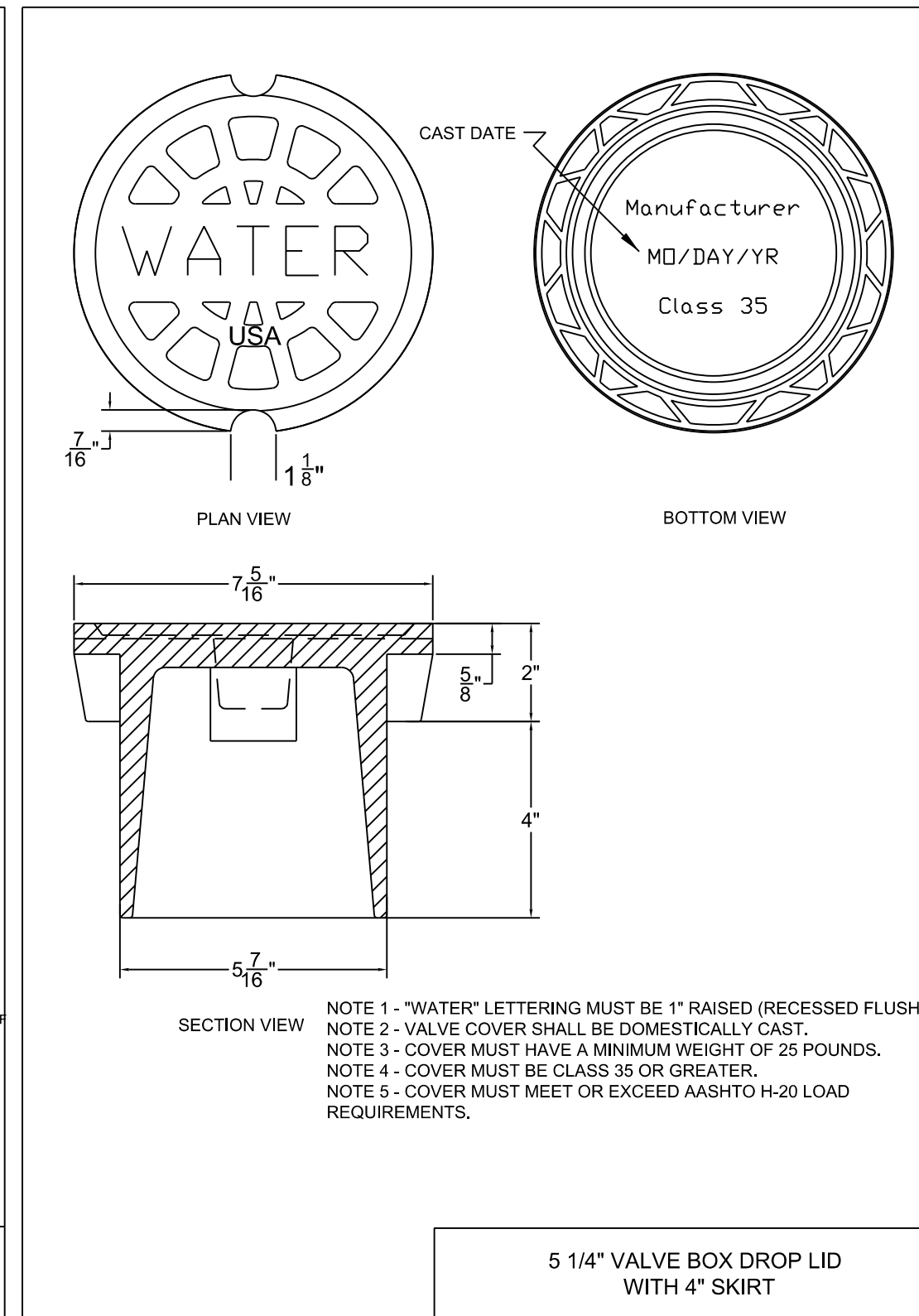
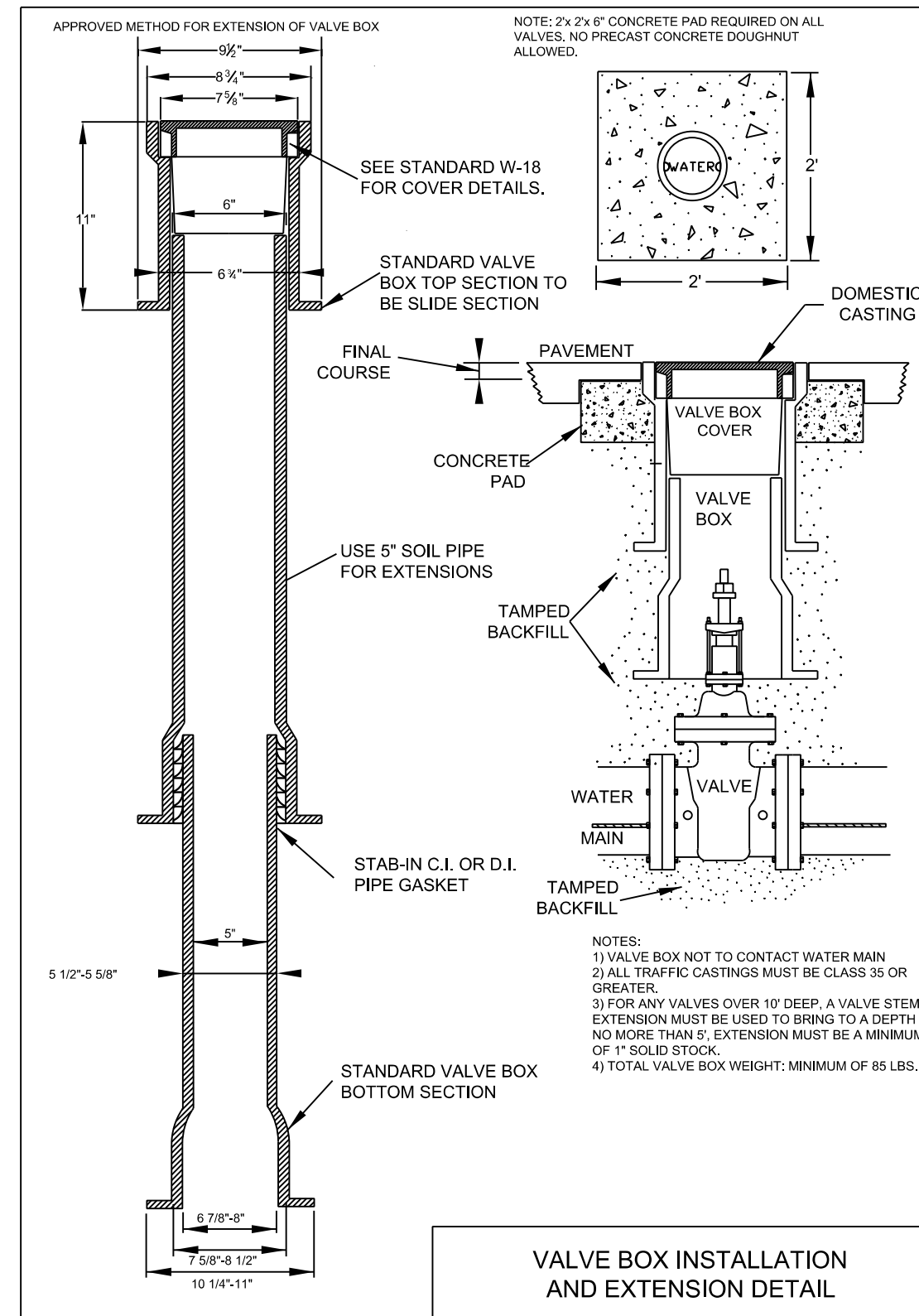
**DOCUMENT NOT CONSIDERED FINAL
UNLESS ALL SIGNATURES COMPLETED**

PROJECT TYPICAL DETAILS

PROJECT REFERENCE NO. B-6051/ U-6143	SHEET NO. UC-3A
DESIGNED BY: E.J.W.	
DRAWN BY: E.J.W.	
CHECKED BY: B.M.B.	
APPROVED BY: B.M.B.	
REVISED:	
NORTH CAROLINA DEPARTMENT OF TRANSPORTATION UTILITIES ENGINEERING SECTION PHONE: (919) 707-6690 FAX: (919) 250-4151	
UTILITY CONSTRUCTION PLANS ONLY	

UTILITY CONSTRUCTION

DOCUMENT NOT CONSIDERED FINAL
UNLESS ALL SIGNATURES COMPLETED



REACTION BEARING AREAS FOR HORIZONTAL WATER PIPE BENDS
 BASED ON TEST PRESSURE OF 200 P.S.I.

ALL AREAS GIVEN IN SQUARE FEET.

SIZE AND DEGREE OF BEND	STATIC THRUST IN POUNDS	MODERATELY DRY CLAY 1400 LBS/FT ³	SOFT CLAY 1200 LBS/FT ³	SUBSILTY GRAVEL / SAND 100 LBS/FT ³	BRN. LENS. 115 DRY CLAY 8000	SAND 100 LBS/FT ³ COMPACT FIRM	SAND 100 LBS/FT ³ CLEAN DRY	SOFT SAND 100 LBS/FT ³ VERY POOR	ROCK POOR 7000 LBS/FT ³
6"									
11 1/4°	1,108	1	1	1	1	1	2	1	
22 1/2°	2,207	1	2	2	1	1	1	3	1
45°	4,328	2	3	3	1	1	2	5	1
90°	7,996	2	4	5	1	1	2	8	1
PLUG	5,655	2	3	4	1	1	2	6	1
8"									
11 1/4°	1,970	1	1	2	1	1	1	2	1
22 1/2°	3,922	1	2	3	1	1	1	4	1
45°	7,694	2	4	5	1	1	2	8	1
90°	14,215	4	8	9	2	2	4	15	2
PLUG	10,053	3	5	6	2	2	3	10	1
12"									
11 1/4°	4,433	2	3	3	1	1	2	5	1
22 1/2°	8,826	3	5	6	2	2	3	9	1
45°	17,312	5	9	11	3	3	5	18	2
90°	31,983	8	16	19	4	4	8	31	4
PLUG	22,619	6	12	14	3	3	6	23	3
16"									
11 1/4°	7,881	2	4	5	1	1	2	8	1
22 1/2°	15,691	4	8	10	2	2	4	16	2
45°	30,779	8	16	19	4	4	8	31	4
90°	56,861	15	29	35	8	8	15	57	6
PLUG	40,213	10	21	25	5	5	10	41	5

REACTION BEARING AREAS ARE IN SQUARE FEET MEASURED IN A VERTICAL PLANE IN THE TRENCH SIDE AT AN ANGLE OF 90° TO THE THRUST VECTOR.

USE 6" - 90 BEND VALUE FOR HYDRANTS FOR ADDITIONAL SAFETY FACTOR.


THRUST BLOCKING DESIGN QUANTITY TABLE

5/14/99

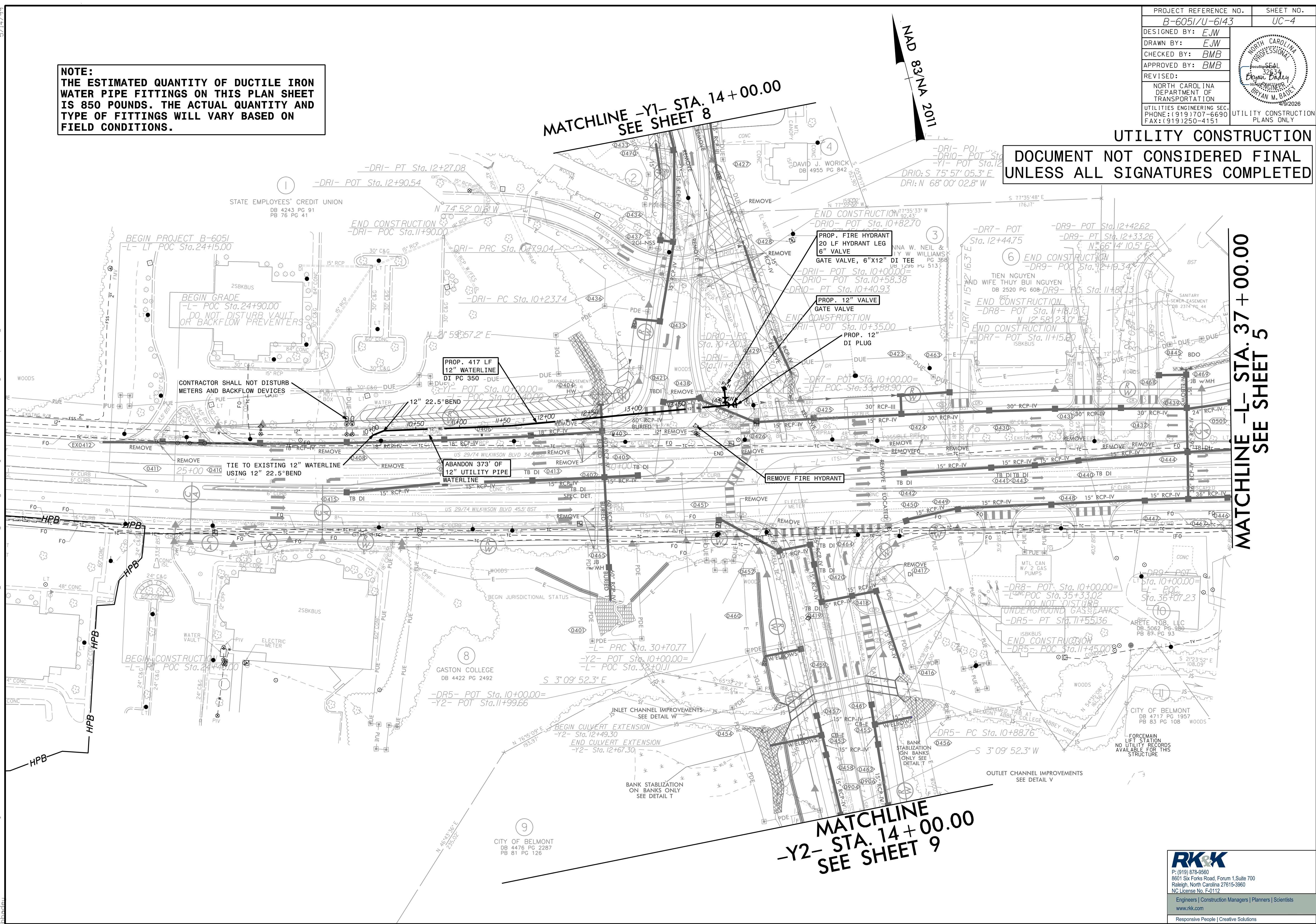
4/9/2026
 RK&K.com\fs\Cloud\Projects\2017\17248_S14-01\Cloud\Projects\2017\17248_S14-01\Plans\B-6051-U-6143-UC-3A.dwg

5/14/19
4/9/2026
C:\Users\jgordon\OneDrive\Documents\Projects\2017\17248_Strip\Drawings\Engineering\UC\Pro\Plans\B-6051\Utility\UC04_psh.dwg

NOTE:
THE ESTIMATED QUANTITY OF DUCTILE IRON WATER PIPE FITTINGS ON THIS PLAN SHEET IS 850 POUNDS. THE ACTUAL QUANTITY AND TYPE OF FITTINGS WILL VARY BASED ON FIELD CONDITIONS.

PROJECT REFERENCE NO.	SHEET NO.
B-6051/U-6143	UC-4
DESIGNED BY: EJW	
DRAWN BY: EJW	
CHECKED BY: BMB	
APPROVED BY: BMB	
REVISED:	
NORTH CAROLINA DEPARTMENT OF TRANSPORTATION	
UTILITIES ENGINEERING SEC. PHONE: (919) 707-6690 FAX: (919) 250-4151	
UTILITY CONSTRUCTION PLANS ONLY	

UTILITY CONSTRUCTION
DOCUMENT NOT CONSIDERED FINAL
UNLESS ALL SIGNATURES COMPLETED



MATCHLINE -L- STA. 37 + 00.00
SEE SHEET 5

MATCHLINE
-Y2- STA. 14 + 00.00
SEE SHEET 9



Engineers | Construction Managers | Planners | Scientists
www.rk&k.com
Responsive People | Creative Solutions

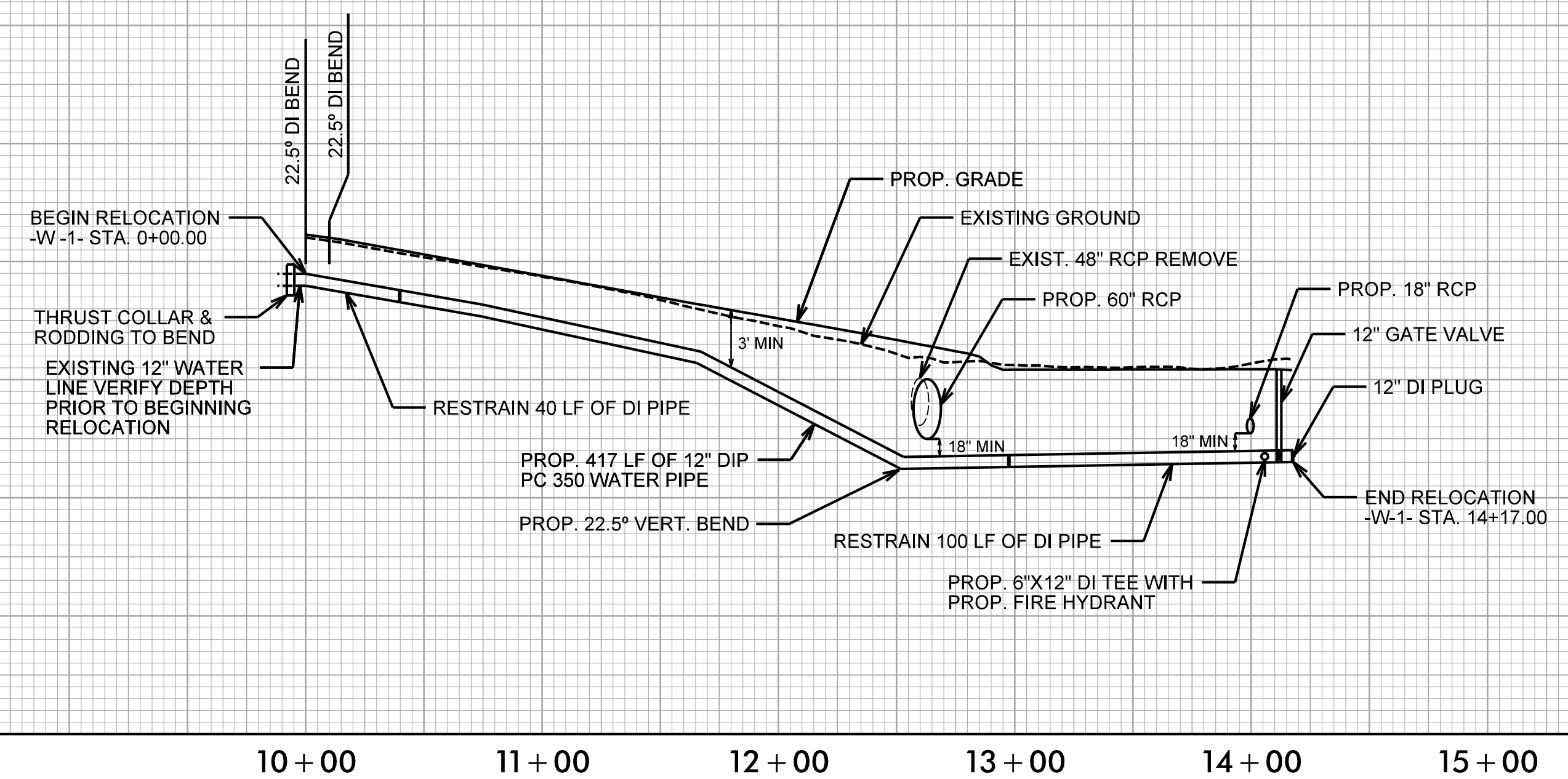
5/28/99

4/3/2026
C:\Users\Engineering\UC\Proj\Plans\B-6051-ut-UC05.pfl.dgn

PROJECT REFERENCE NO. B-6051/ U-6143	SHEET NO. UC-5
DESIGNED BY: <i>EJW</i>	
DRAWN BY: <i>EJW</i>	
CHECKED BY: <i>BMB</i>	
APPROVED BY: <i>BMB</i>	
REVISED:	
NORTH CAROLINA DEPARTMENT OF TRANSPORTATION UTILITIES ENGINEERING SEC. PHONE: (919) 707-6690 FAX: (919) 250-4151	
UTILITY CONSTRUCTION PLANS ONLY	

-W-1-

UTILITY CONSTRUCTION
DOCUMENT NOT CONSIDERED FINAL
UNLESS ALL SIGNATURES COMPLETED



P: (919) 878-9560
 8601 Six Forks Road, Forum 1, Suite 700
 Raleigh, North Carolina 27615-3960
 NC License No. F-0112
 Engineers | Construction Managers | Planners | Scientists
 www.rkk.com
 Responsive People | Creative Solutions

3/31/2026 \\carr\k\com\fs\Cloud\Projects\2017\17248_StrOnCall\03000_Caston_91_BR-0020\Design\Utilities\Engineering\UB0\Proj\Conduit Design\CADD\working\B-6051_ut_UC06_tsh_psh.dgn

TIP PROJECT: B-6051 / U-6143

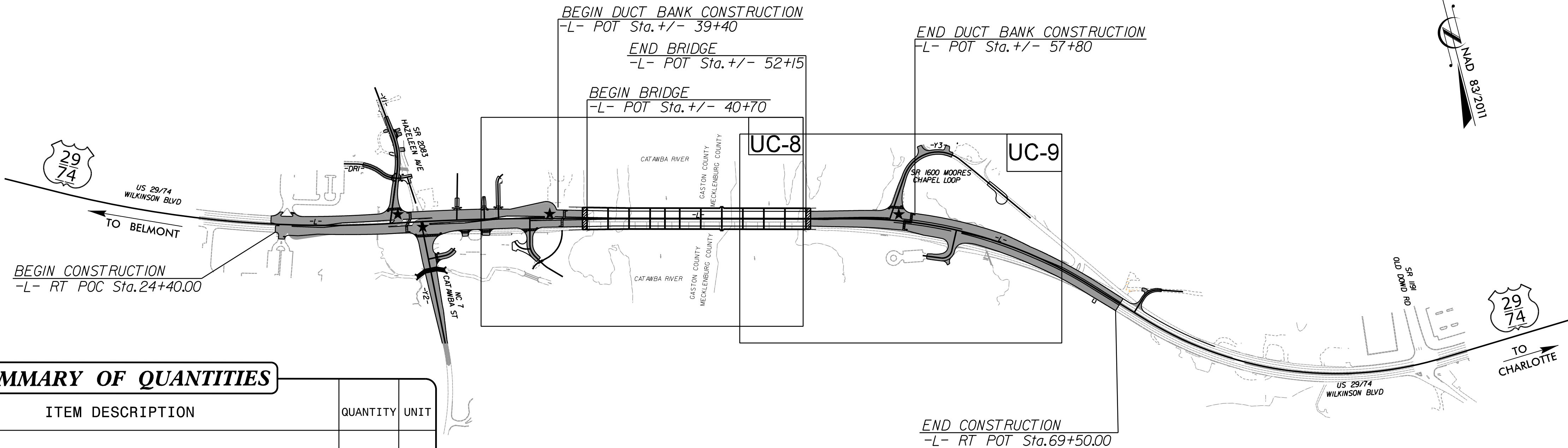
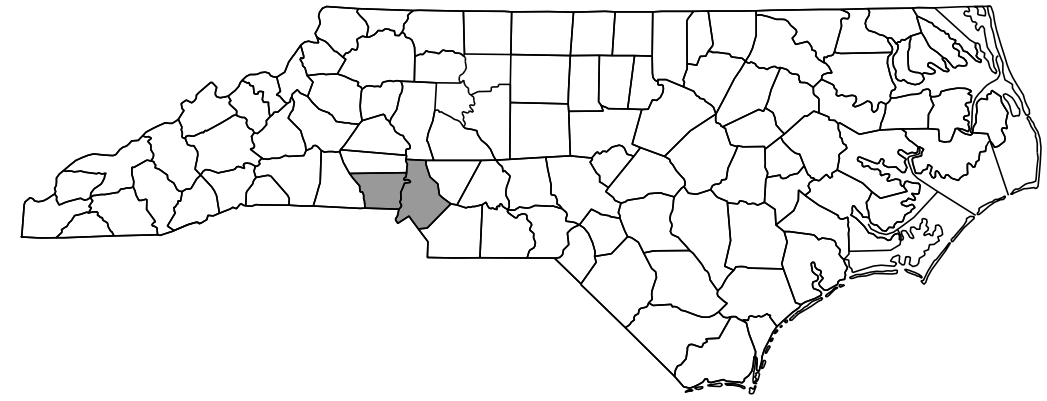
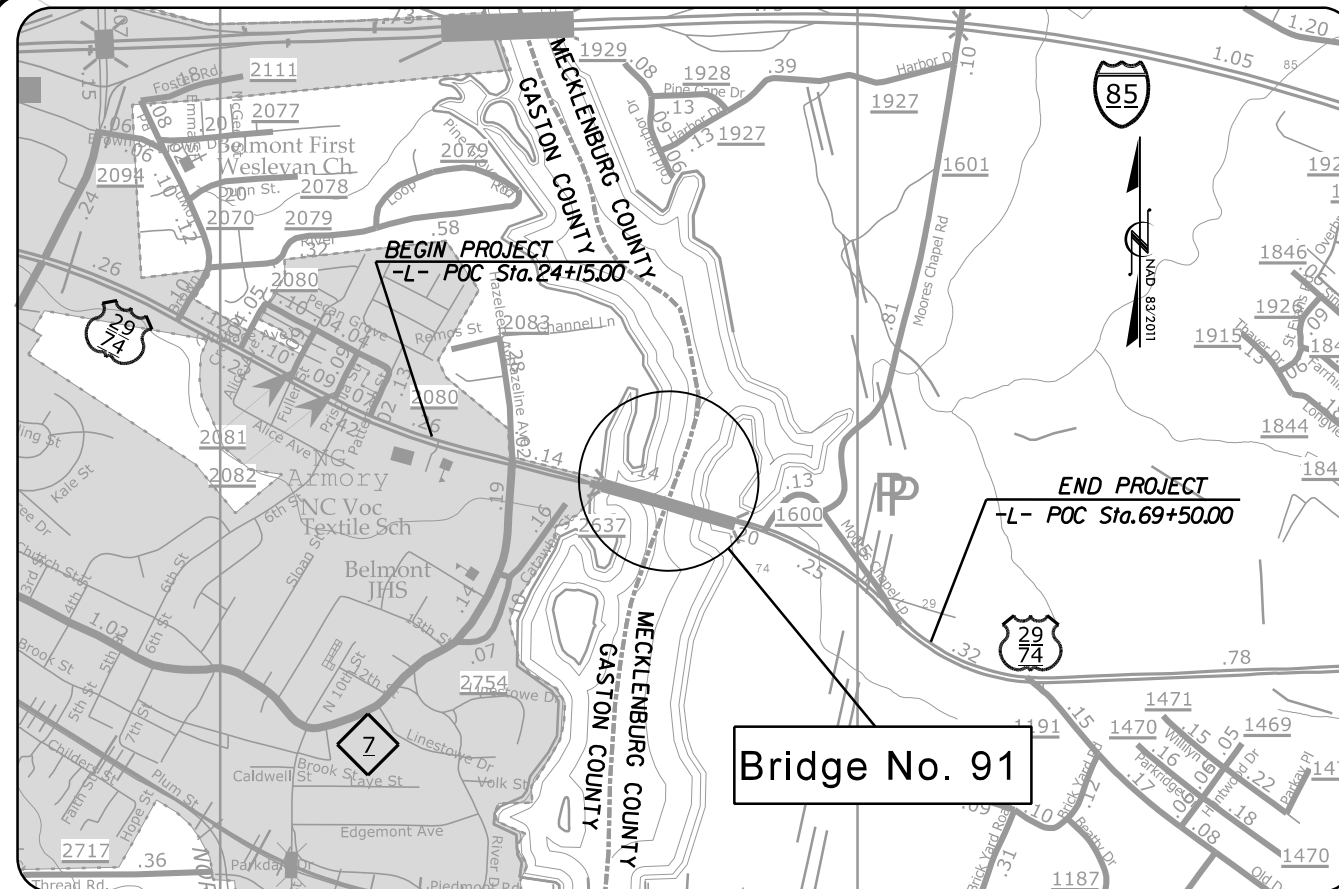
CONTRACT NO:

STATE OF NORTH CAROLINA
DIVISION OF HIGHWAYS

T.I.P. NO.	SHEET NO.
B-6051U-6143	UC-6

**UTILITY CONSTRUCTION PLANS
GASTON / MECKLENBURG COUNTIES**

**LOCATION: BRIDGE NO. 91 OVER CATAWBA RIVER
ON US 29 /US 74 AND INTERSECTION
IMPROVEMENTS ON US 29 /US 74
(WILKINSON BLVD) AND NC 7 (CATAWBA ST)**
TYPE OF WORK: UTILITY DUCT BANK PLANS



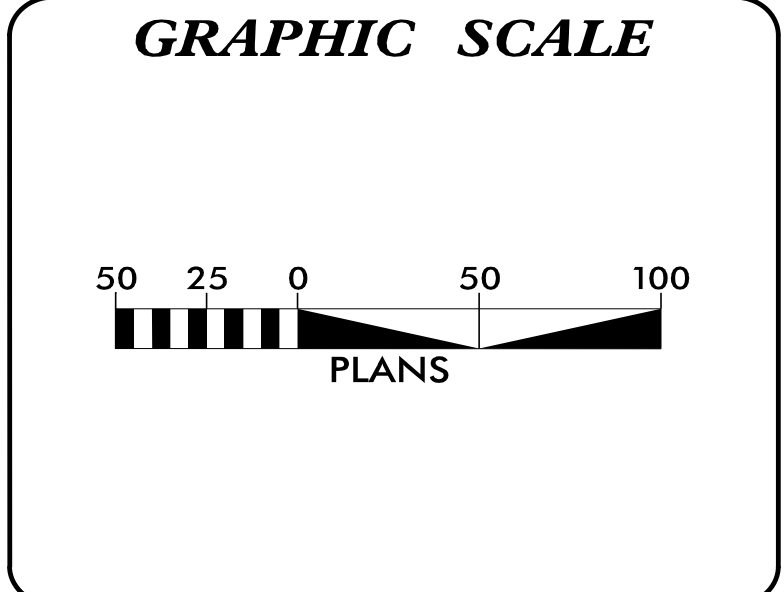
SUMMARY OF QUANTITIES

ITEM NO.		ITEM DESCRIPTION	QUANTITY	UNIT
DESC. NO.	SECT. NO.			
XX	1409	UTILITY DUCT, 4" PVC SCHEDULE 40	4,906	L.F.
XX	1525	UTILITY MANHOLE, 6'x6' PRECAST STRUCTURE	2	EA.

DUCT BANK DESIGN ENGINEER

Signed by: *Elford Jackson*

SEAL: NORTH CAROLINA PROFESSIONAL ENGINEER, SEAL 061293, ENGINEER, FORD D. JACKSON, P.E.



INDEX OF SHEETS

SHEET NO.:	DESCRIPTION:
UC-6	TITLE SHEET
UC-6A	DUCT BANK DETAILS
UC-7 THRU UC-8	DUCT BANK PLAN SHEETS

- CONDUIT OWNERS ON PROJECT**
- AT&T COMMUNICATIONS - COMMUNICATIONS (D)
 - CONTERRA ULTRA BROADBAND - COMMUNICATIONS
 - RST GLOBAL COMMUNICATIONS - COMMUNICATIONS
 - SEGRA - COMMUNICATIONS
 - MCI/VERIZON - COMMUNICATIONS
 - SPECTRUM - CATV

PREPARED IN THE OFFICE OF:

RK&K

P: (919) 878-9560
900 Ridgely Drive Suite 350 | Raleigh, North Carolina 27609-3960
NC License No. F-0112

Engineers | Construction Managers | Planners | Scientists
www.rkk.com
Responsive People | Creative Solutions

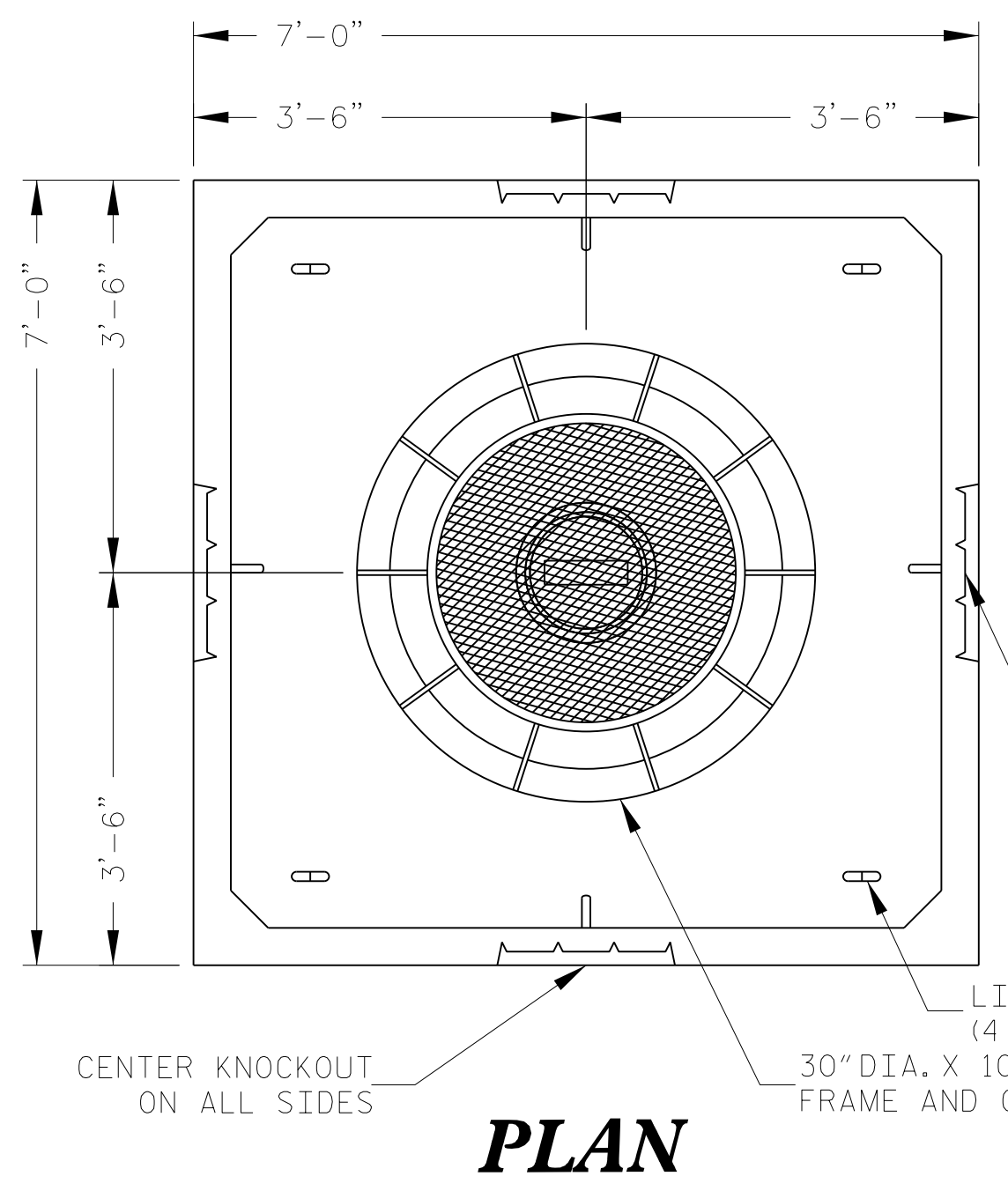
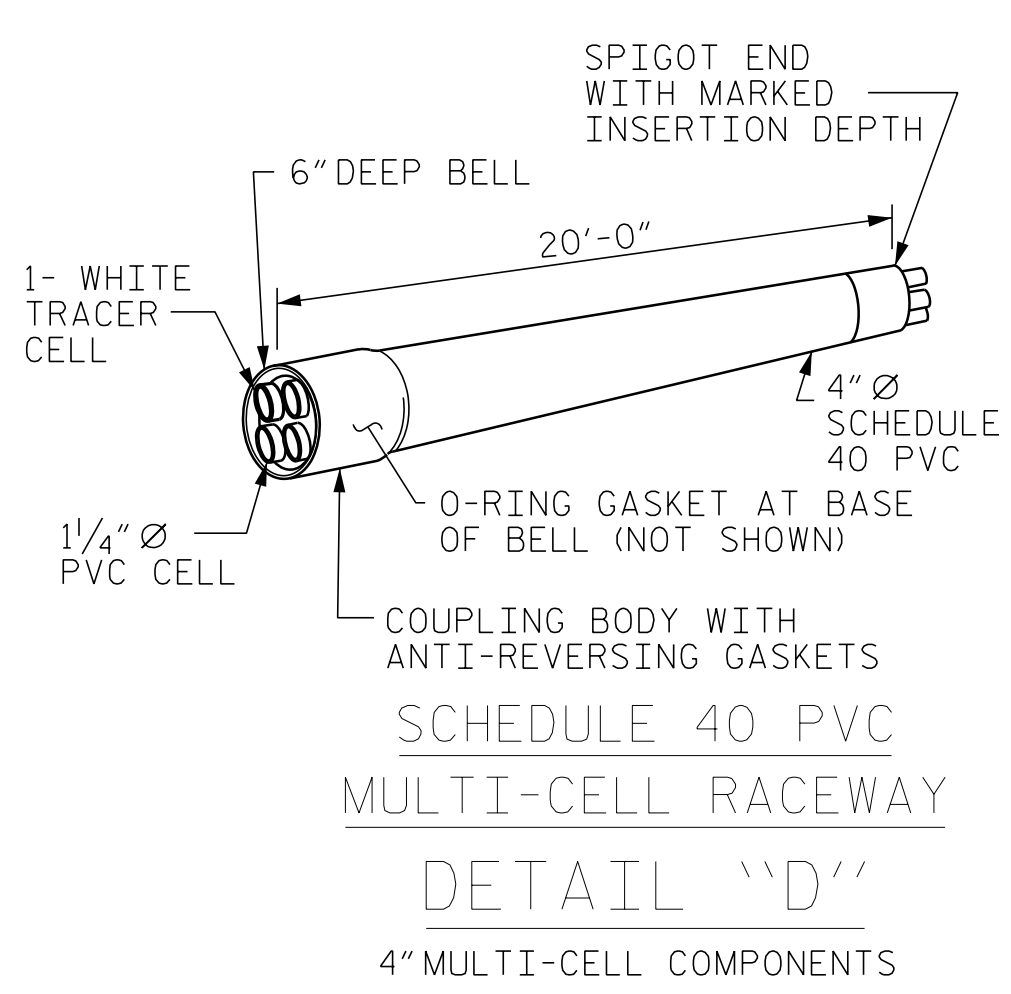
Richy Narron UTILITY PROJECT MANAGER
John Davis PROJECT UTILITY COORDINATOR
John Davis/Mark Lawson PROJECT UTILITY CADDSUPPORT

**DIVISION OF HIGHWAYS
UTILITIES UNIT**

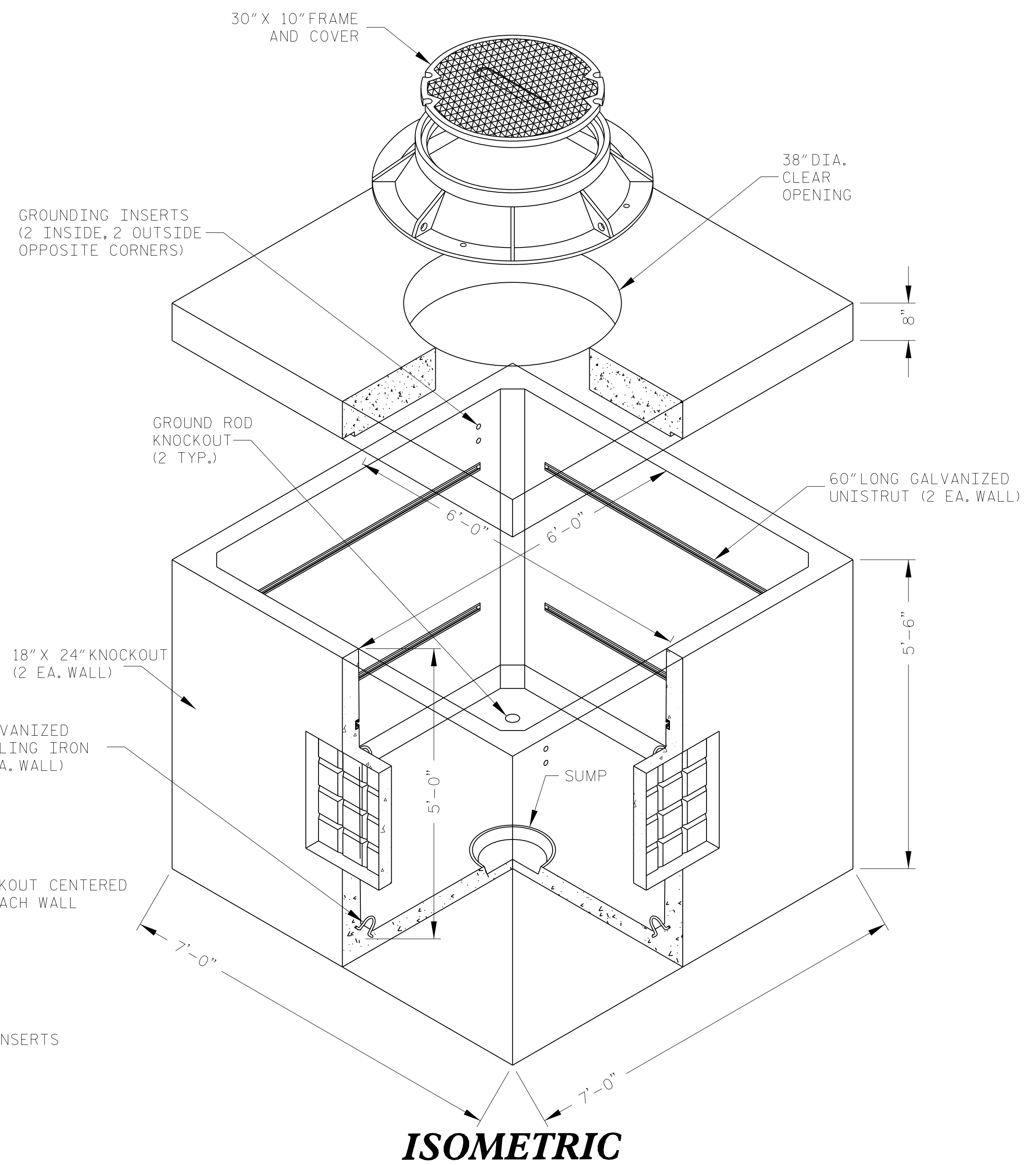
1555 MAIL SERVICES CENTER
RALEIGH, NC 27699-1555
PHONE (919) 707-6690
FAX (919) 250-4151

Amy York UTILITIES REGIONAL ENGINEER
Don Hampton UTILITIES ENGINEER
Dayton Martin UTILITIES AREA COORDINATOR
Pat Jones UTILITIES COORDINATOR

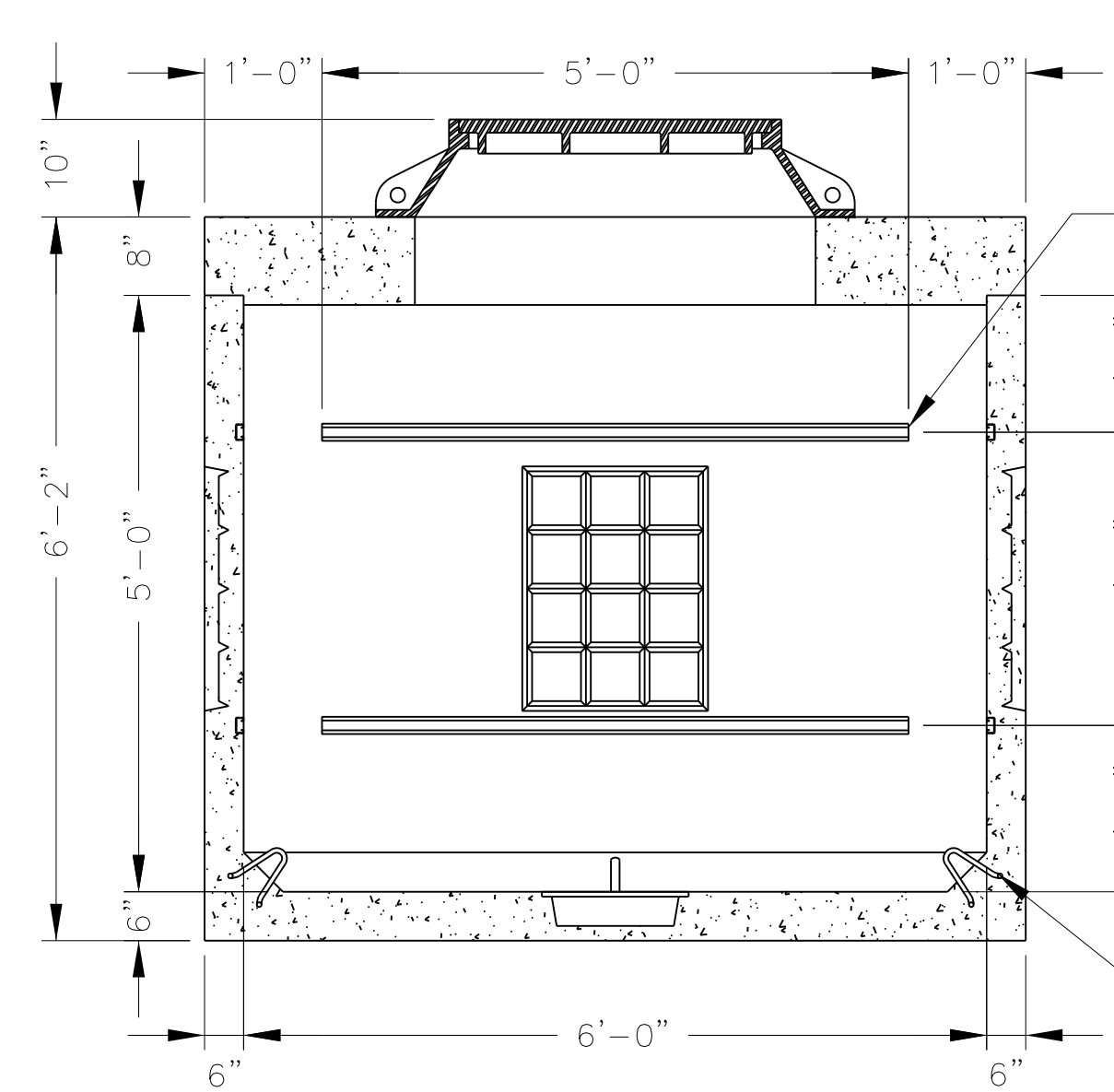
3/31/2026
 \\pa-rkk-com\fs\Cloud\Projects\2017\17248_StrOnCall\00300_Caston_91_BF-0020\Design\Utilities\Engineering\UB0\Proj\Conduit_Design\CADD\working\B-6051\ut_UC06A_Detail.dgn
 jolinger



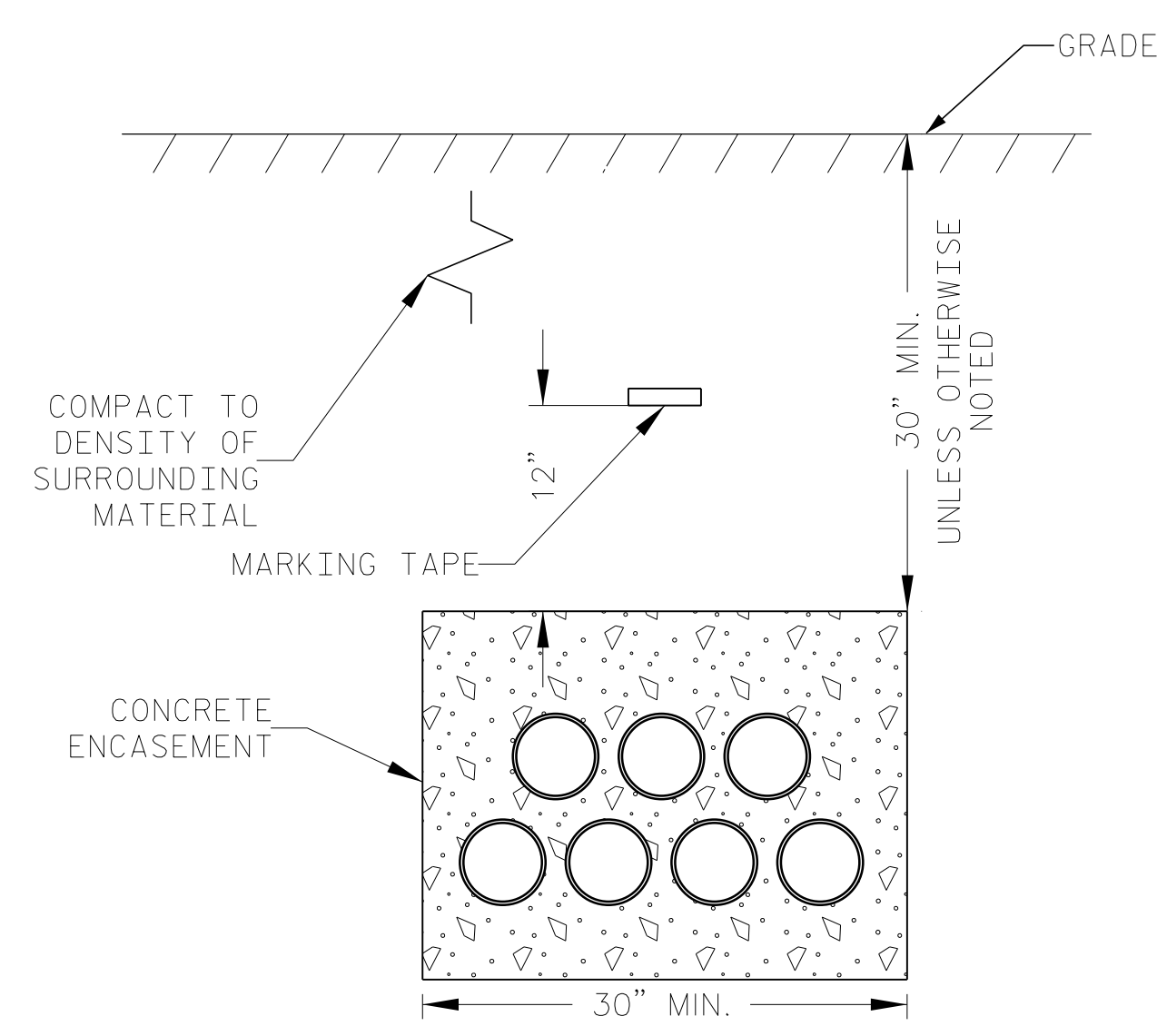
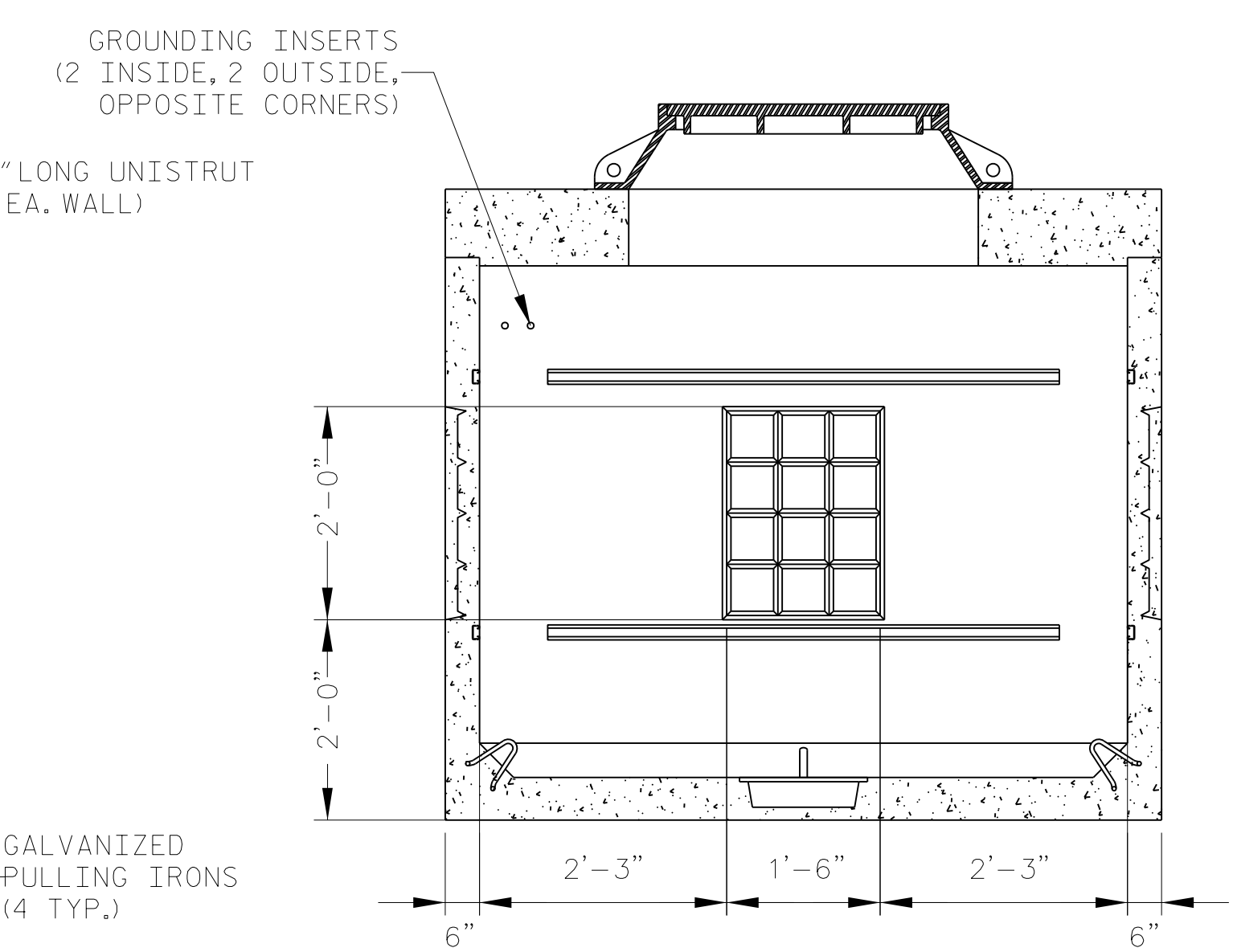
PLAN



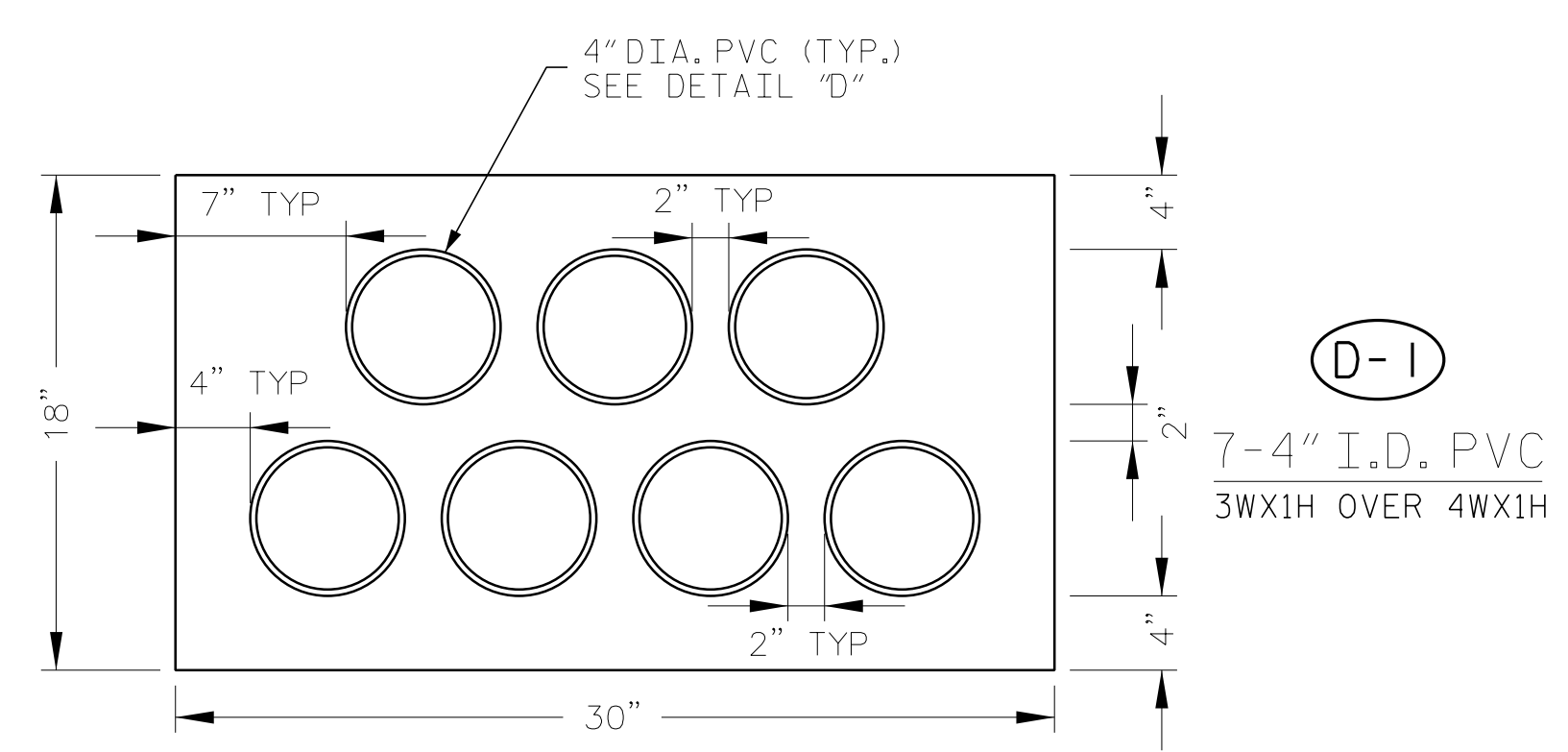
ISOMETRIC



ELEVATION



DUCT BANK TRENCH INSTALLATION



NOTES:

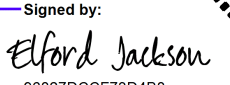
1. PROVIDE DUCT SPACERS AT EACH JOINT AND EVERY FIVE FEET THEREAFTER.
2. PROVIDE SCH 40 PVC PIPE FOR UNDERGROUND DUCT BANK CONDUITS.
3. UTILITY OWNERS TO PROVIDE 1-1/4" DIAMETER PVC CELL AS SHOWN ON DETAIL "D"

MANHOLE NOTES:

1. MANHOLE LID SHALL BE STAMPED "COMMUNICATION". INSTALL A PLASTIC INSERT IN EACH MANHOLE LID.
2. PROVIDE A FIBERGLASS ACCESS LADDER IN THE MANHOLE.
3. ALL DUCT BANK ENTRIES INTO THE MANHOLE SHALL BE SEALED WATERTIGHT
4. CONCRETE: 5,000PSI MIN. 28 DAY STRENGTH.
5. STEEL REINFORCEMENT: ASTM A-615 GRADE 60.
6. MANHOLE TO BE DESIGNED TO MEET ASTM C857, C858, AND ACI 318 WITH AASHTO HS-20 LOADING.
7. ALL CONSTRUCTION JOINTS TO BE SEALED.

GENERAL NOTES

1. CONTRACTOR SHALL BE RESPONSIBLE FOR FURNISHING AND INSTALLING CONDUITS AND INSTALLING MANHOLES. CONDUCTOR CABLES WILL BE FURNISHED AND INSTALLED BY OTHERS.
2. CONDUIT LOCATIONS ARE DIAGRAMMATIC. FIELD ADJUSTMENTS SHALL BE MADE AS REQUIRED TO STAY WITHIN THE LIMITS OF CONSTRUCTION, WITHIN RIGHT-OF-WAY, OUT OF DITCH LINES, AWAY FROM FENCE POSTS AND SAFETY RAILS, AND TO CLEAR OBSTRUCTIONS.
3. ALL CONDUITS SHALL BE 4" PVC SCHEDULE 40 UNLESS OTHERWISE NOTED.
4. ALL NON-BORED CONDUITS SHALL BE INSTALLED WITH NCDOT STANDARD 1409.01.
5. THE MATERIAL, INSTALLATION, ENCASEMENT, AND INSPECTION OF ALL NEW CONDUITS SHALL BE IN COMPLIANCE WITH NCDOT STANDARDS.
6. CONTRACTOR SHALL TEST PIT TO IDENTIFY ANY POTENTIAL UNDERGROUND UTILITY CONFLICTS PRIOR TO INSTALLING ALL PROPOSED UTILITY DUCT BANK CONDUITS.
7. ALL SOIL REMOVED FOR CONDUITS AND MANHOLES, ETC. MUST BE COVERED WITH EROSION CONTROL MATTING TO PREVENT EROSION. SOIL NOT USED FOR BACKFILL MUST BE REMOVED ON THE SAME WORKING DAY.
8. ALL TRENCHING MUST BE BACKFILLED AND RESTORED TO ITS ORIGINAL CONDITION ON THE SAME WORKING DAY IN WHICH TRENCHING OCCURRED. AREAS WHICH ARE NOT RESEED, MULCHED, OR SODDED MUST BE COVERED WITH EROSION CONTROL MATTING TO PREVENT EROSION. ALL SOIL NOT USED FOR BACKFILL MUST BE REMOVED ON THE SAME WORKING DAY.
9. CONTRACTOR TO COORDINATE ALL WORK WITH OTHER CONTRACTORS TO AVOID CONFLICTS WITH OTHER WORK.
10. WITHIN 36 IN. OF UNDERGROUND UTILITY LOCATIONS, THE CONTRACTOR SHALL BE REQUIRED TO EXCAVATE FOR EXISTING UTILITIES BY HAND. HAND DIGGING FOR INSTALLATION OF CONDUITS AND MANHOLES, ETC. SHALL BE INCIDENTAL TO THE PROPOSED DUCT BANK. NO ADDITIONAL COMPENSATION WILL BE PROVIDED FOR HAND DIGGING.

PROJECT REFERENCE NO. B-6051/U-6143	SHEET NO. UC-7
DUCT BANK DESIGN ENGINEER NORTH CAROLINA PROFESSIONAL SEAL 061293 ELFORD D. JACKSON II 06837000210488 3/31/2026	
Signed by: 	
DOCUMENT NOT CONSIDERED FINAL UNLESS ALL SIGNATURES COMPLETED	
DUCT BANK DETAILS	

RK&K
 P: (919) 878-9560
 8601 Six Forks Road, Forum 1, Suite 700
 Raleigh, North Carolina 27615-3960
 NC License No. F-0112
 Engineers | Construction Managers | Planners | Scientists
 www.rkk.com
 Responsive People | Creative Solutions

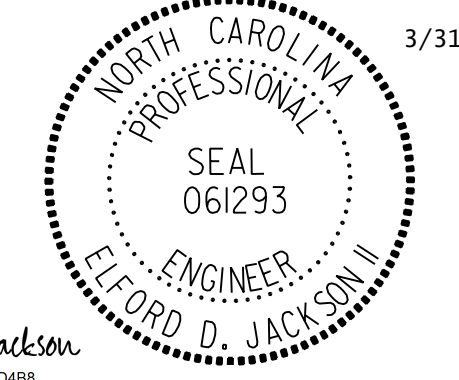
3/31/2026 1:00:00 PM C:\Users\jackson\OneDrive\Documents\Projects\2017\17248_Str-DrnCall\003000_Gaston_91_BF-0020\Design\Utilities\Engineering\UB02\Proj\Conduit_Design\CADD\working\B-6051.ut_UC07_psh.dgn

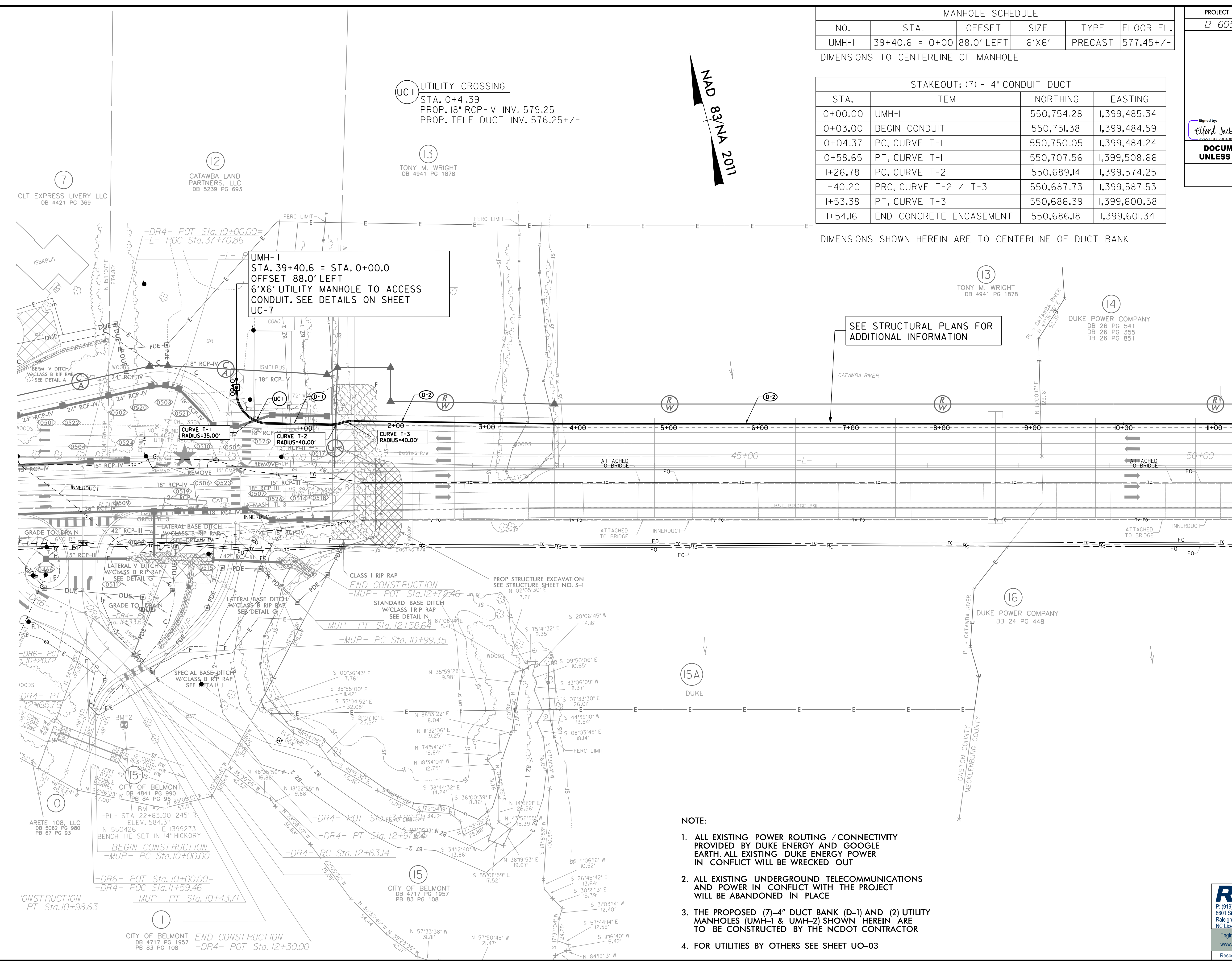
MANHOLE SCHEDULE					
NO.	STA.	OFFSET	SIZE	TYPE	FLOOR EL.
UMH-1	39+40.6 = 0+00	88.0' LEFT	6'X6'	PRECAST	577.45+/-

DIMENSIONS TO CENTERLINE OF MANHOLE

STAKEOUT: (7) - 4" CONDUIT DUCT			
STA.	ITEM	NORTHING	EASTING
0+00.00	UMH-1	550,754.28	1,399,485.34
0+03.00	BEGIN CONDUIT	550,751.38	1,399,484.59
0+04.37	PC, CURVE T-1	550,750.05	1,399,484.24
0+58.65	PT, CURVE T-1	550,707.56	1,399,508.66
1+26.78	PC, CURVE T-2	550,689.14	1,399,574.25
1+40.20	PRC, CURVE T-2 / T-3	550,687.73	1,399,587.53
1+53.38	PT, CURVE T-3	550,686.39	1,399,600.58
1+54.16	END CONCRETE ENCASMENT	550,686.18	1,399,601.34

DIMENSIONS SHOWN HEREIN ARE TO CENTERLINE OF DUCT BANK

PROJECT REFERENCE NO. B-6051/U-6143	SHEET NO. UC-8
DUCT BANK DESIGN ENGINEER  ELFORD D. JACKSON II 3/31/2026	
DOCUMENT NOT CONSIDERED FINAL UNLESS ALL SIGNATURES COMPLETED	
DUCT BANK PLANS	



MATCHLINE -L- STA. 50 + 50.00 SEE SHEET NO. UC-9

- NOTE:
- ALL EXISTING POWER ROUTING /CONNECTIVITY PROVIDED BY DUKE ENERGY AND GOOGLE EARTH. ALL EXISTING DUKE ENERGY POWER IN CONFLICT WILL BE WRECKED OUT
 - ALL EXISTING UNDERGROUND TELECOMMUNICATIONS AND POWER IN CONFLICT WITH THE PROJECT WILL BE ABANDONED IN PLACE
 - THE PROPOSED (7)-4" DUCT BANK (D-1) AND (2) UTILITY MANHOLES (UMH-1 & UMH-2) SHOWN HEREIN ARE TO BE CONSTRUCTED BY THE NCDOT CONTRACTOR
 - FOR UTILITIES BY OTHERS SEE SHEET UO-03

RK&K
 P: (919) 878-9560
 8601 Six Forks Road, Forum 1, Suite 700
 Raleigh, North Carolina 27615-3960
 NC License No. F-0112
 Engineers | Construction Managers | Planners | Scientists
 www.rk.com
 Responsive People | Creative Solutions

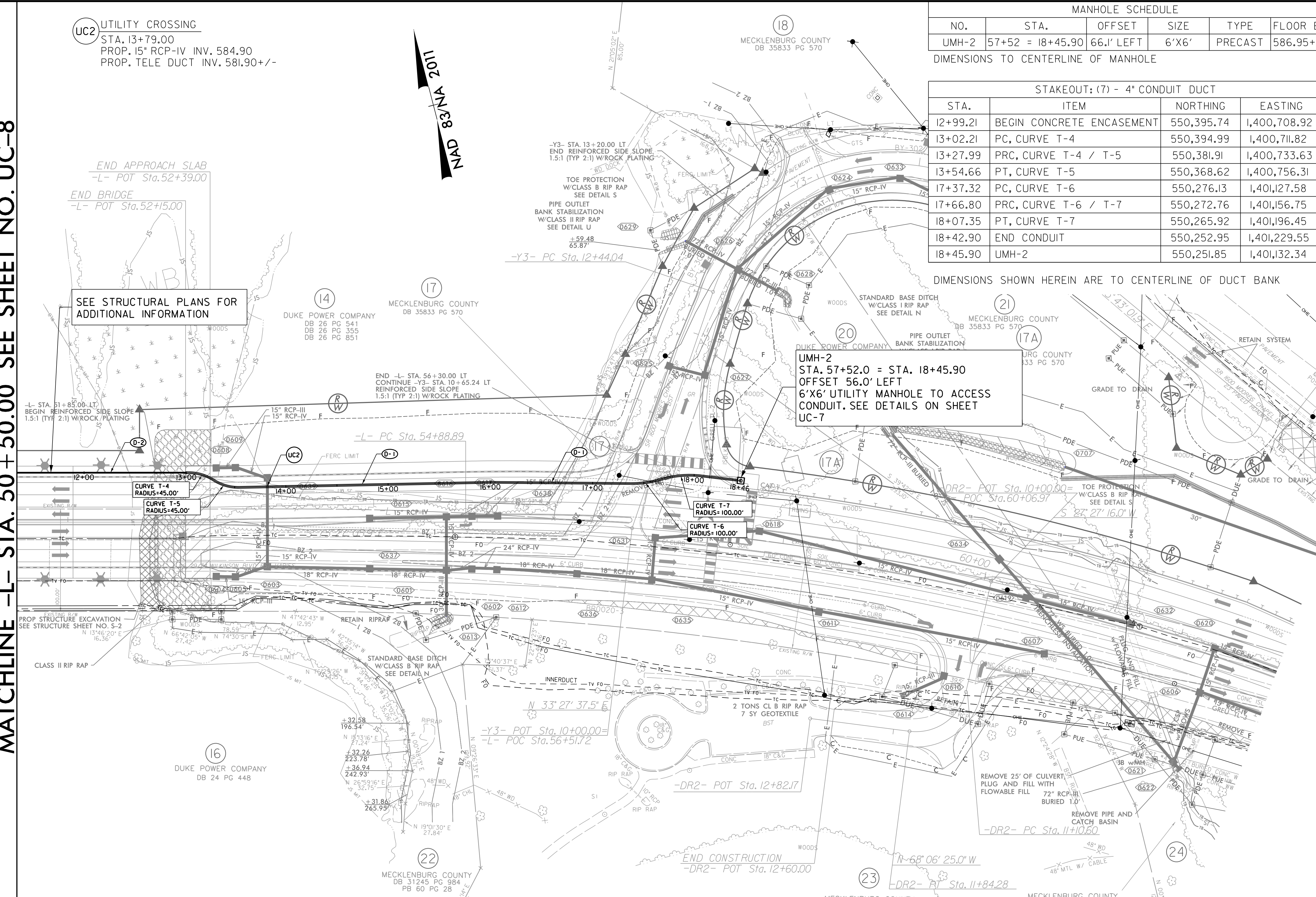
3/31/2026 \\pa-rkk.com\fs\Cloud\Projects\2017\17248_Str-DnCall\003000_Geoton_91_BF-0020\Design\Utilities\Engineering\UBD\Proj\Conduit_Design\CADD\working\B-6051_ut_UC08_psh.dgn

MATCHLINE -L- STA. 50 + 50.00 SEE SHEET NO. UC-8

UC2 UTILITY CROSSING
 STA. 13+79.00
 PROP. 15" RCP-IV INV. 584.90
 PROP. TELE DUCT INV. 581.90+/-

END APPROACH SLAB
 -L- POT Sta. 52+39.00
 END BRIDGE
 -L- POT Sta. 52+15.00

SEE STRUCTURAL PLANS FOR
 ADDITIONAL INFORMATION



MANHOLE SCHEDULE					
NO.	STA.	OFFSET	SIZE	TYPE	FLOOR EL.
UMH-2	57+52 = 18+45.90	66.1' LEFT	6'X6'	PRECAST	586.95+/-

STAKEOUT: (7) - 4" CONDUIT DUCT			
STA.	ITEM	NORTHING	EASTING
12+99.21	BEGIN CONCRETE ENCASEMENT	550,395.74	1,400,708.92
13+02.21	PC, CURVE T-4	550,394.99	1,400,711.82
13+27.99	PRC, CURVE T-4 / T-5	550,381.91	1,400,733.63
13+54.66	PT, CURVE T-5	550,368.62	1,400,756.31
17+37.32	PC, CURVE T-6	550,276.13	1,401,127.58
17+66.80	PRC, CURVE T-6 / T-7	550,272.76	1,401,156.75
18+07.35	PT, CURVE T-7	550,265.92	1,401,196.45
18+42.90	END CONDUIT	550,252.95	1,401,229.55
18+45.90	UMH-2	550,251.85	1,401,132.34

DIMENSIONS SHOWN HEREIN ARE TO CENTERLINE OF DUCT BANK

UMH-2
 STA. 57+52.0 = STA. 18+45.90
 OFFSET 56.0' LEFT
 6'X6' UTILITY MANHOLE TO ACCESS
 CONDUIT. SEE DETAILS ON SHEET
 UC-7

- NOTE:**
- ALL EXISTING POWER ROUTING / CONNECTIVITY PROVIDED BY DUKE ENERGY AND GOOGLE EARTH. ALL EXISTING DUKE ENERGY POWER IN CONFLICT WILL BE WRECKED OUT
 - ALL EXISTING UNDERGROUND TELECOMMUNICATIONS AND POWER IN CONFLICT WITH THE PROJECT WILL BE ABANDONED IN PLACE
 - THE PROPOSED (7)-4" DUCT BANK (D-1) AND (2) UTILITY MANHOLES (UMH-1 & UMH-2) SHOWN HEREIN ARE TO BE CONSTRUCTED BY THE NCDOT CONTRACTOR
 - FOR UTILITIES BY OTHERS SEE SHEET UO-03

PROJECT REFERENCE NO. B-6051/U-6143	SHEET NO. UC-9
DUCT BANK DESIGN ENGINEER	
Signed by: Elford D. Jackson	
DOCUMENT NOT CONSIDERED FINAL UNLESS ALL SIGNATURES COMPLETED	
DUCT BANK PLANS	