

8/17/99

PROJECT REFERENCE NO.	SHEET NO.
B-6051/U-6143	CONDUIT-4

APPROVED: _____

DATE: _____

SEAL

DOCUMENT NOT CONSIDERED FINAL
UNLESS ALL SIGNATURES COMPLETED

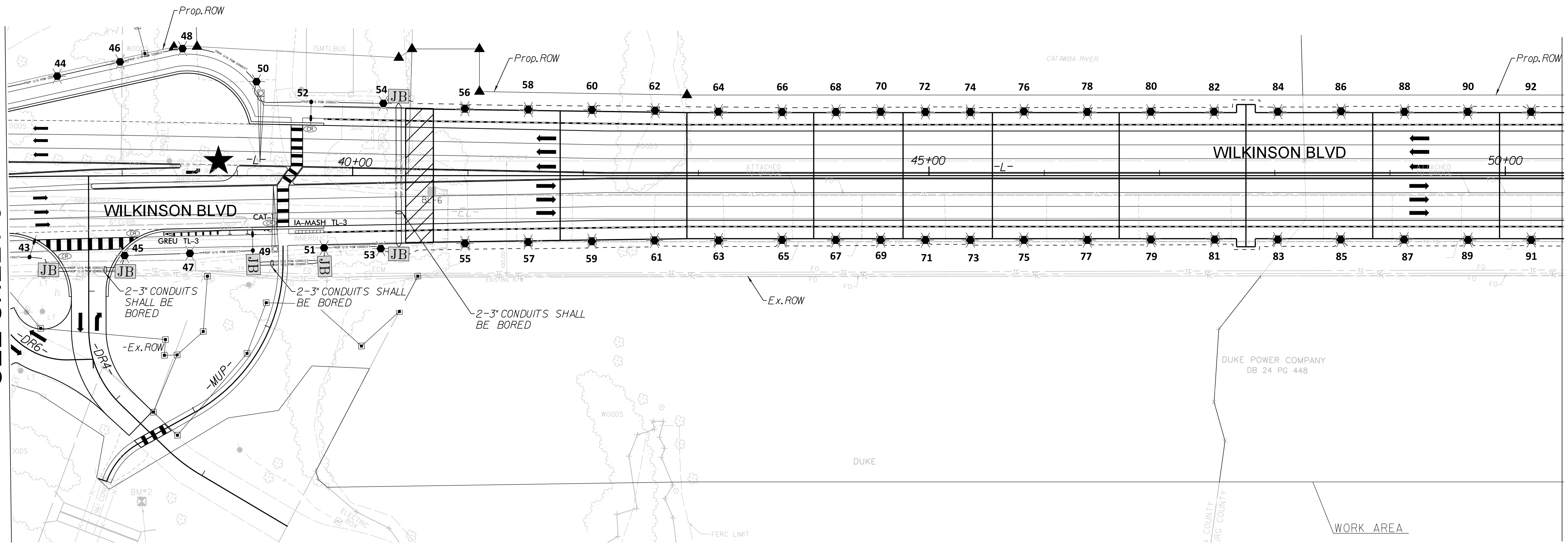
LEGEND

—PROP U/G POW CONDUIT—	PROPOSED 2" LIGHTING CONDUIT-PVC SCHEDULE 40
—PROP U/G POW CONDUIT—	PROPOSED (2) 3" LIGHTING CONDUIT, BORED-PVC SCHEDULE 40
---	PROPOSED BRIDGE STRUCTURAL CONDUIT
JB	JUNCTION BOX
	DUKE ENERGY STD. POLE WITH ROADWAY FIXTURE ON 12' ARM
	DUKE ENERGY STD. POLE WITH POST TOP FIXTURE
	PARAPET MOUNTED POLE
9	LUMINAIRE IDENTIFICATION NUMBER

- NOTES**
1. UNLESS NOTED ON THE PLANS, ALL 2" LIGHTING CONDUIT SHALL BE TRENCHED.
 2. CONDUIT SHALL BE INSTALLED SUCHD THAT POLES SHALL BE PLACED TO MAINTAIN A MINIMUM LATERAL CLEARANCE OF 6' FROM FACE OF CURB.
 3. CONDUIT SHALL BE INSTALLED SUCH THAT POLES 45, 47, 49, 51, 52, 53, AND 54 SHALL BE PLACED TO AVOID INTERFERENCE WITH SAFETY RAIL ALONG MIXED-USED PATH.
 4. CONDUIT INSTALLED ON THE BRIDGE STRUCTURE BETWEEN ACCESS PANELS SHALL CONSIST OF (2) 3" AND (1) 2" CONDUITS.
 5. CONDUIT INSTALLED ON THE BRIDGE STRUCTURE FROM ACCESS PANELS TO LIGHT POLE FOUNDATIONS SHALL CONSIST OF (1) 2" AND (1) 1" CONDUITS.
 6. CONDUIT INSTALLED FROM ACCESS PANELS ON THE BRIDGE STRUCTURE TO HANDHOLES AT THE BRIDGE CORNERS, OFF OF THE BRIDGE STRUCTURE, SHALL CONSIST OF (2) 3" AND (1) 2" CONDUITS.
 7. CONDUITS INSTALLED FROM HANDHOLES AT THE BRIDGE CORNERS, OFF OF THE BRIDGE STRUCTURE, TO ADJACENT HANDHOLES AND/OR LIGHT POLE FOUNDATION SHALL CONSIST OF (2) 3" AND (1) 2" CONDUITS.
 8. REFER TO BRIDGE STRUCTURAL PLANS FOR ADDITIONAL INFORMATION REGARDING CONDUIT INSTALLED IN THE BASE OF THE CLASSIC BRIDGE RAIL.

NAD 83/NA 2011

MATCHLINE -L- STA. 37+00.00
SEE SHEET 3



MATCHLINE -L- STA. 50+50.00
SEE SHEET 5

RK&K

P: (919) 878-9560
8601 Six Forks Road, Forum 1, Suite 700
Raleigh, North Carolina 27615-3960
NC License No. F-0112

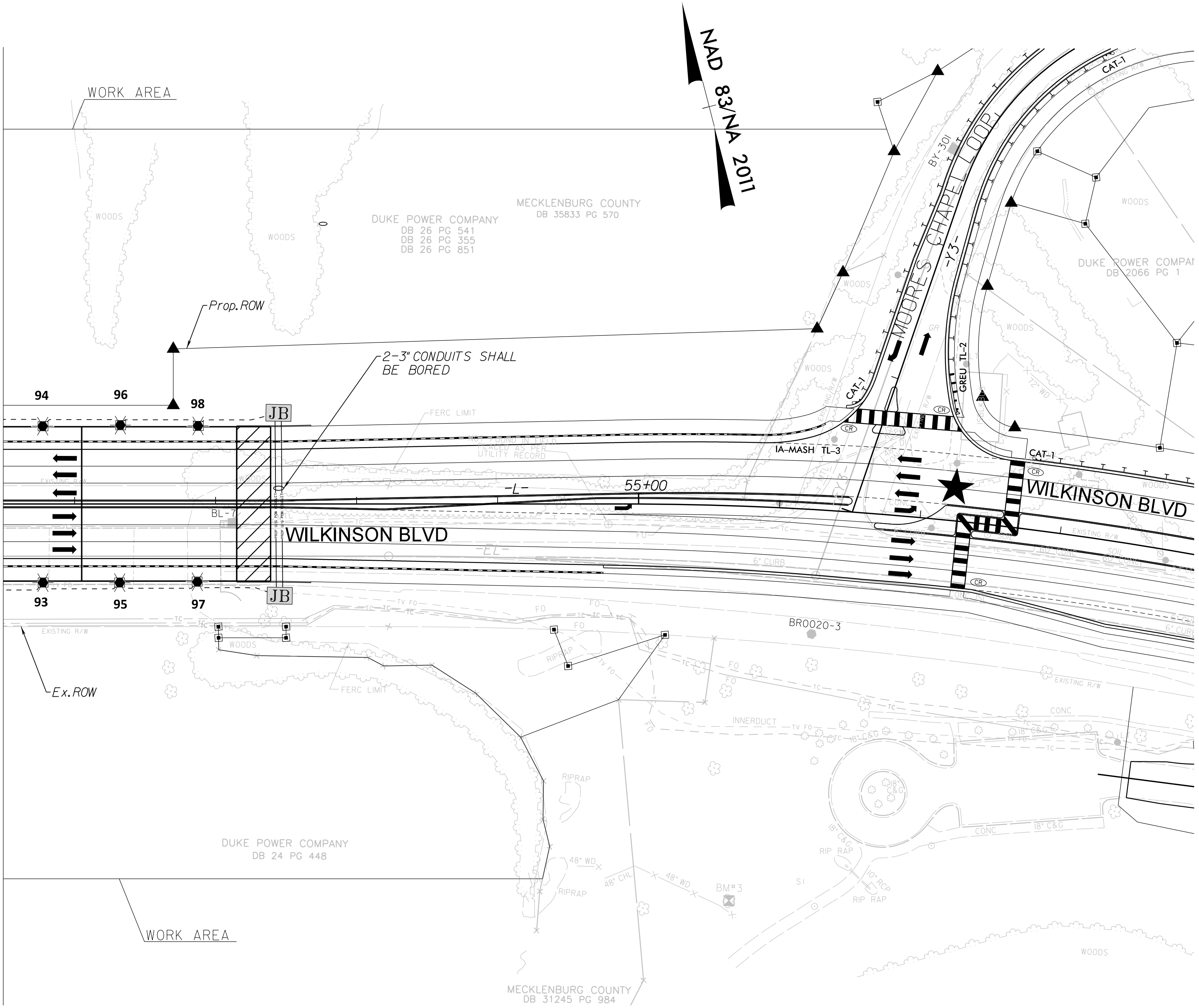
Engineers | Construction Managers | Planners | Scientists
www.rkk.com

Responsive People | Creative Solutions

**ELECTRICAL
CONDUIT
PLAN**

PROJECT REFERENCE NO.	SHEET NO.
B-6051/U-6143	CONDUIT-5
APPROVED: _____	
DATE: _____	
SEAL	
DOCUMENT NOT CONSIDERED FINAL UNLESS ALL SIGNATURES COMPLETED	

MATCHLINE -L- STA. 50+50.00 SEE SHEET 4



LEGEND

- PROP U/G POW CONDUIT— PROPOSED 2" LIGHTING CONDUIT-PVC SCHEDULE 40
- PROP U/G POW CONDUIT— PROPOSED (2) 3" LIGHTING CONDUIT, BORED-PVC SCHEDULE 40
- PROPOSED BRIDGE STRUCTURAL CONDUIT
- [JB] JUNCTION BOX
- DUKE ENERGY STD. POLE WITH ROADWAY FIXTURE ON 12' ARM
- ⊙ DUKE ENERGY STD. POLE WITH POST TOP FIXTURE
- ⊙ PARAPET MOUNTED POLE
- 9 LUMINAIRE IDENTIFICATION NUMBER

NOTES

1. UNLESS NOTED ON THE PLANS, ALL 2" LIGHTING CONDUIT SHALL BE TRENCHED.
2. CONDUIT SHALL BE PLACED SUCH THAT POLES SHALL BE PLACED TO MAINTAIN A MINIMUM LATERAL CLEARANCE OF 6' FROM FACE OF CURB.
3. CONDUITS INSTALLED ON THE BRIDGE STRUCTURE BETWEEN ACCESS PANELS SHALL CONSIST OF (2) 3" AND (1) 2" CONDUITS.
4. CONDUITS INSTALLED ON THE BRIDGE STRUCTURE FROM ACCESS PANELS TO LIGHT POLE FOUNDATIONS SHALL CONSIST OF (1) 2" AND (1) 1" CONDUITS.
5. CONDUITS INSTALLED FROM ACCESS PANELS ON THE BRIDGE STRUCTURE TO HANDHOLES AT THE BRIDGE CORNERS, OFF OF THE BRIDGE STRUCTURE, SHALL CONSIST OF (2) 3" AND (1) 2" CONDUITS.
6. CONDUITS INSTALLED FROM HANDHOLES AT THE BRIDGE CORNERS, OFF OF THE BRIDGE STRUCTURE, TO ADJACENT HANDHOLES AND/OR LIGHT POLE FOUNDATION SHALL CONSIST OF (2) 3" AND (1) 2" CONDUITS.
7. REFER TO BRIDGE STRUCTURAL PLANS FOR ADDITIONAL INFORMATION REGARDING CONDUIT INSTALLED IN THE BASE OF THE CLASSIC BRIDGE RAIL.

RK&K
P: (919) 878-9560
8601 Six Forks Road, Forum 1, Suite 700
Raleigh, North Carolina 27615-3960
NC License No. F-0112

Engineers | Construction Managers | Planners | Scientists
www.rkk.com

Responsive People | Creative Solutions

**ELECTRICAL
CONDUIT
PLANS**

8/17/99