

REINFORCING STEEL FOR ONE GIRDER

Span	Side	Type	Length	Weight
Exterior Girder - Span	C	53	4	3.01
Interior Girder - Span	C	71	4	4.03
Exterior Girder - Span	—	—	—	—
Interior Girder - Span	—	—	—	—
Exterior Girder - Span	—	—	—	—
Interior Girder - Span	—	—	—	—

STATE OF NORTH CAROLINA
 PROJECT NO. 8.17374
 FORSYTH COUNTY
 STATION 399+20 L³

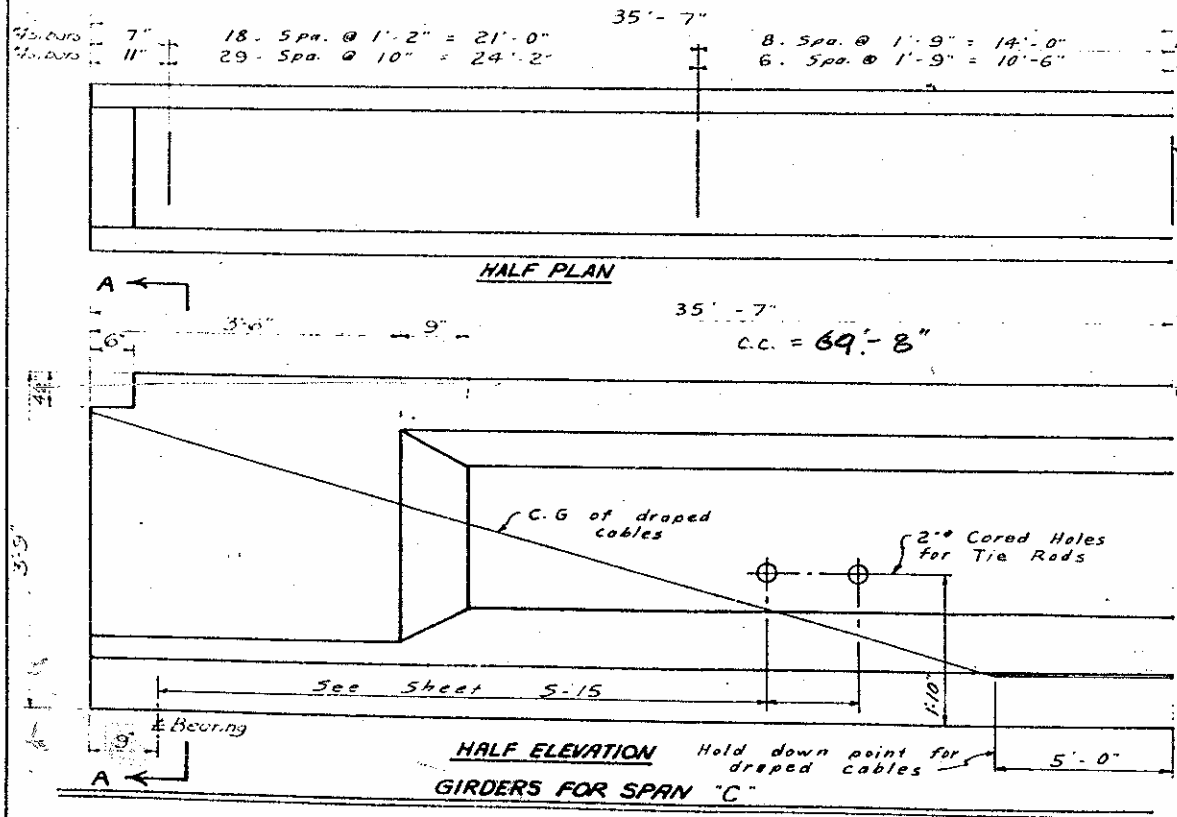
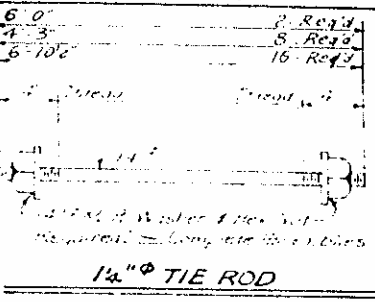
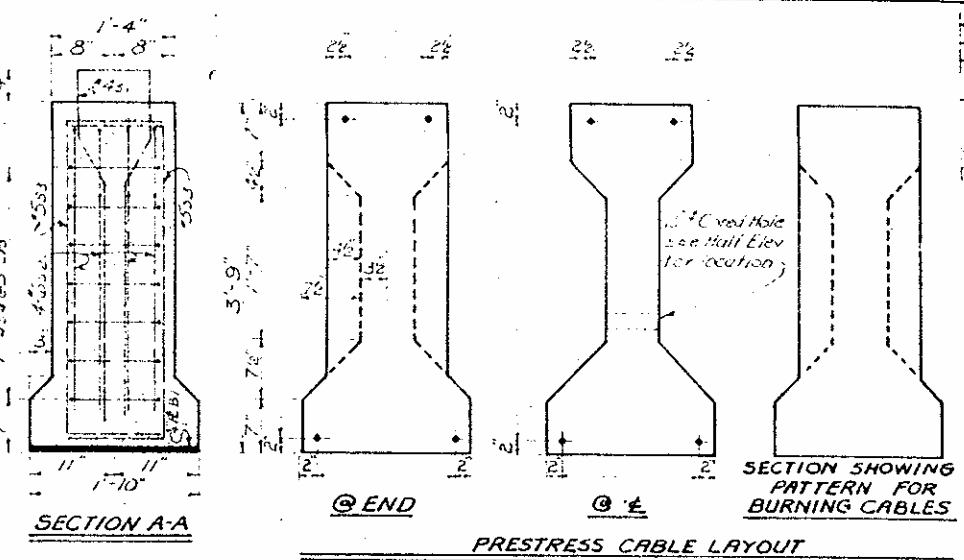
NOTES 65 271

All prestress strands to be 3/8" Stress Relieved Cables. Each cable to be pre-stressed at 18,000 lbs.

Cables to be cut off flush with end of girder.

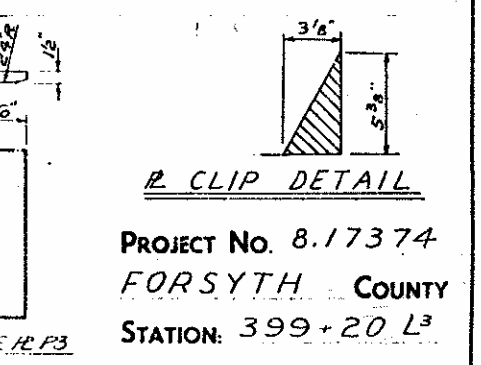
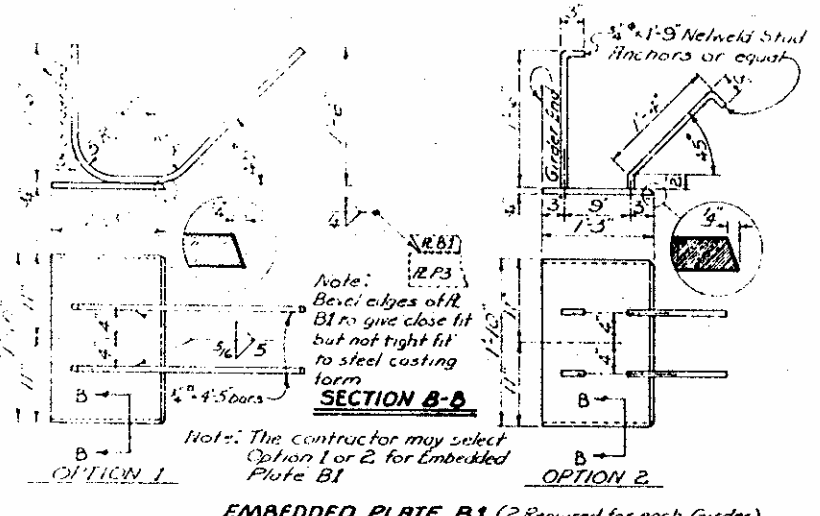
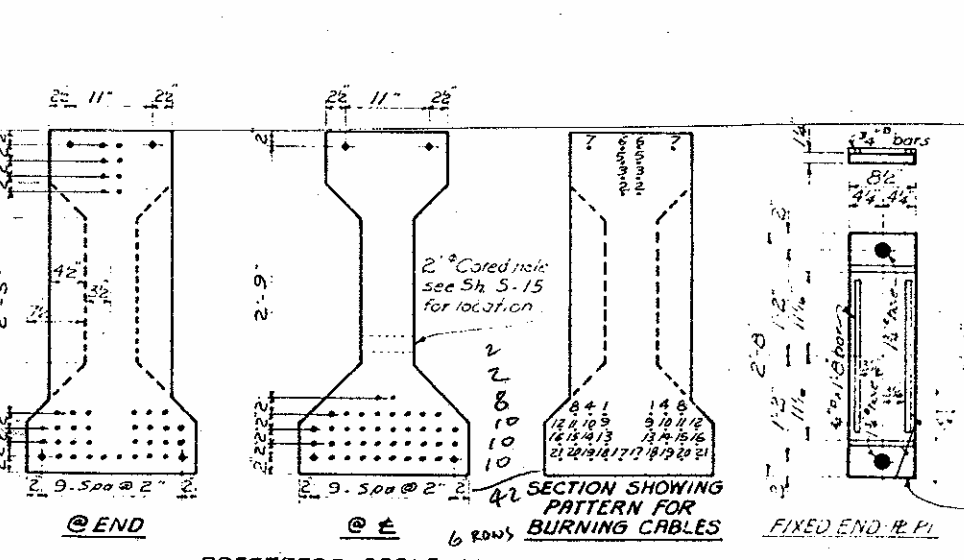
No surface finish will be required for prestressed concrete girders. However the outside face of the exterior girders shall be carefully cleaned of drippings and other discolorations.

See Specifications.



NOTE: If cable stress is relieved by burning, each pair of cables shall be burned at ends of bays and between all girders before burning any of the next pair of cables. The following order of burning shall be strictly adhered to:

- (1) Bottom Cables 1-1
- (2) Draped Cables 2-2
- (3) Draped Cables 3-3
- (4) Bottom Cables 4-4
- (5) Draped Cables 5-5
- (6) Draped Cables 6-6
- (7) Top Cables 7-7
- (8) Release Hold-downs



**STATE OF NORTH CAROLINA
 STATE HIGHWAY COMMISSION
 RALEIGH**

**STANDARD
 45" PRESTRESSED
 CONCRETE GIRDER
 SPAN "C"**

AUGUST 1961

REVISIONS				SHEET NO.			
NO.	BY	DATE	NO.	BY	DATE	TOTAL SHEETS	
1	SMN	11-62	1			5-18	
							83

6-14-96

QUANTITIES FOR ONE GIRDER

Item	Reinforcing Steel (lbs)	Concrete (cu yds)	1/2 S R Cables (Nos)
Exterior Girder - Span "C"	564	10.66	42
Interior Girder - Span "C"	666	10.66	42
Exterior Girder - Span "C"	—	—	—
Interior Girder - Span "C"	—	—	—

GIRDERS REQUIRED

No.	Length	Total Length
2	71'-2"	142.33
12	71'-2"	854.00

Rev Dec 19/61: new cables cut off flush with end of girder by J.C.C. / J.C.B.
 Rev. #2: Revised to change span lengths by J.C.M.W.

SPECIAL
 Assembled By: [Signature] Date: [Date]
 Checked By: [Signature] Date: [Date]

STANDARD
 Drawn By: [Signature] Date: [Date]
 Checked By: [Signature] Date: [Date]