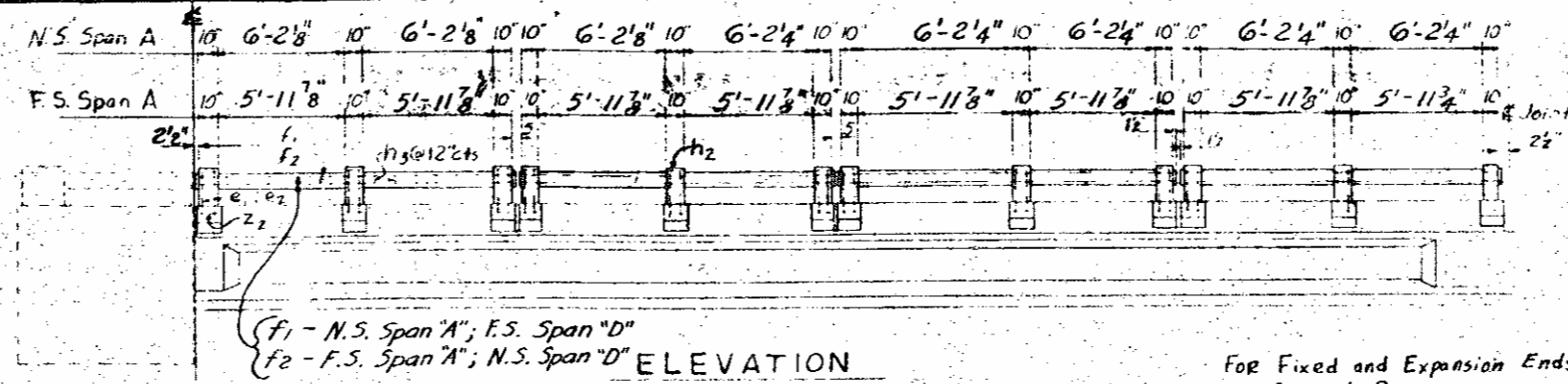
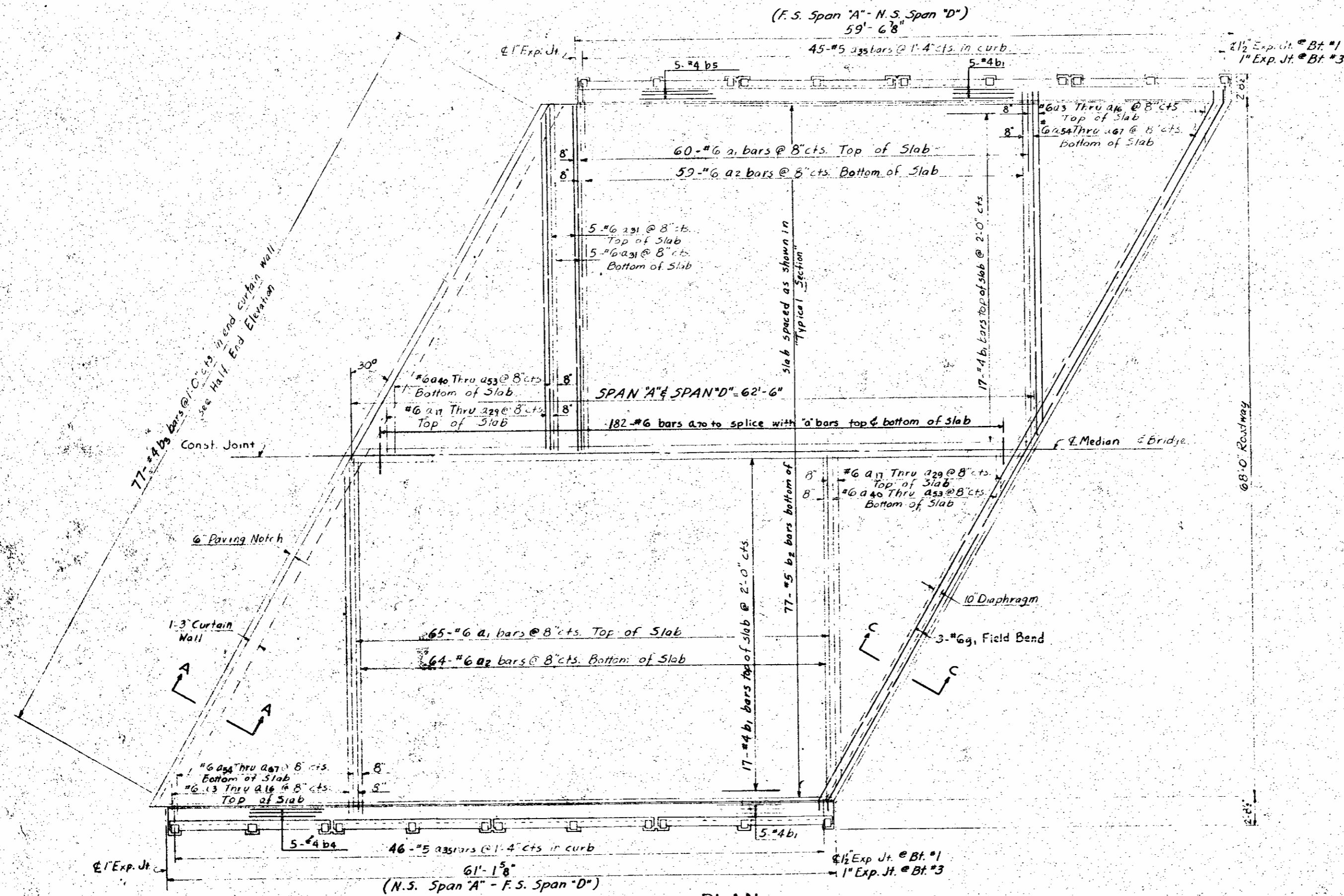


FILE NO.	STATE	PROJECT NO.
3	N. C.	8.17374
F.A. Proj. F-III (17)		57
		271



NOTE: For details of Water stop see End Bents.

For Fixed and Expansion Ends see General Drawing



PLAN

PROJECT NO. 8.17374
 FORSYTH COUNTY
 STATION: 399 + 20.0 L3

STATE OF NORTH CAROLINA
 STATE HIGHWAY COMMISSION
 SUPERSTRUCTURE
 SPAN 'A' & 'D'
 AUGUST, 1960

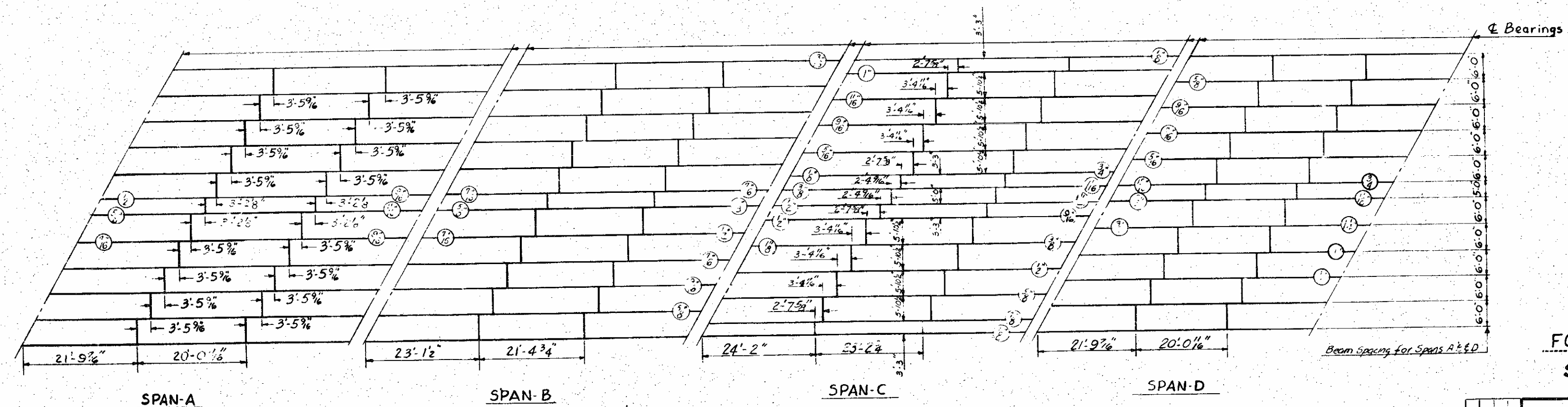
DESIGNED BY R. E. Payne DATE 8-9-60
 DRAWN BY U. L. Blockner DATE 5-9-60
 CHECKED BY U. L. Blockner DATE 5-9-60

Rev. 1 - To change span length. by A.R.S. Feb. 1962 (1/66)

1/374
(17)
71

NO. ROAD DIST. NO.	STATE	PROJECT NO.
3	N.C.	8.17374
FA Proj. F-III (17)		62 271

SPAN	GIRDER	DEFLECTION		FINAL DEFL.
		GIRDER ALONE IN PLACE	DEFL. DUE TO SUPERIMPOSED DEAD LOAD	
A, D	INT	1/8" UP	1/8" DOWN	1/8" DOWN
A, D	EXT	1/8" UP	1/8" DOWN	1/8" DOWN
B	INT	1/8" UP	1/8" DOWN	1/8" DOWN
B	EXT	1/8" UP	1/8" DOWN	1/8" DOWN
C	INT	1/8" UP	1/8" DOWN	1/8" DOWN
C	EXT	1/8" UP	1/8" DOWN	1/8" DOWN



DIAPHRAGM AND FILL PLATE LAYOUT
○ Denotes Fill Plates

PROJECT NO. 8.17374
FORSYTH COUNTY
STATION: 399+20.0 L³

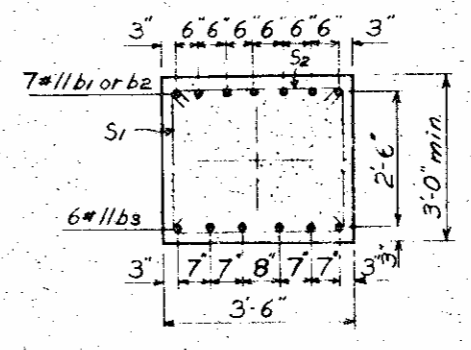
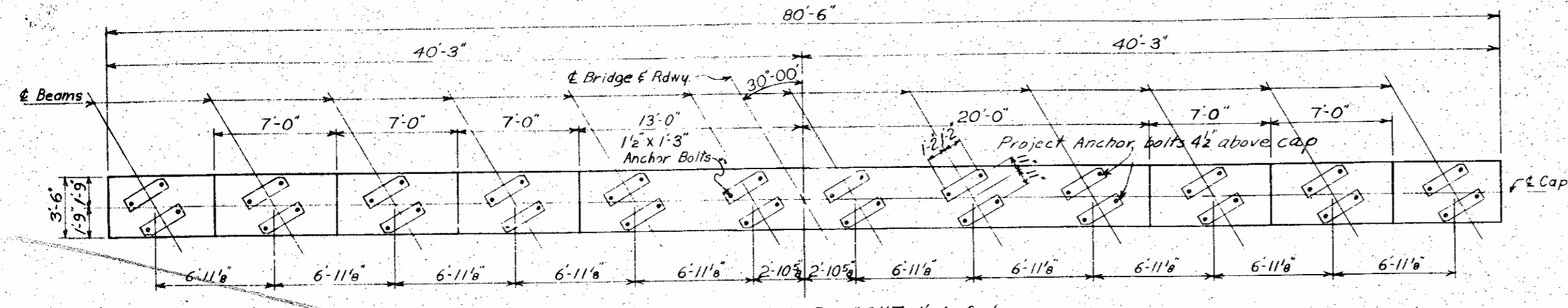
STATE OF NORTH CAROLINA	
STATE HIGHWAY COMMISSION	
DIAPHRAGM AND FILL PLATE LAYOUT	
AUGUST, 1960	
DATE	5-15
SCALE	83

DESIGNED BY *R. P. Payne* DATE 8-19-60
CHECKED BY *J. H. ...* DATE 8-22-60

Revision No 1 To Change Span lengths

17374
 771
 L
 WEIGHT
 1586
 232
 232
 30
 95
 144
 90
 744
 235
 24
 28
 18
 25
 4
 2
 82
 254
 46
 63
 7
 300
 121
 105
 24
 67
 28
 17
 16
 95
 16
 Cu. Yds.
 21
 17
 212
 215
 215
 17
 ON

FILE NO.	STATE	PROJECT NO.
3	N. C.	817374
F. A. Proj. F-111 (17)		
67		271

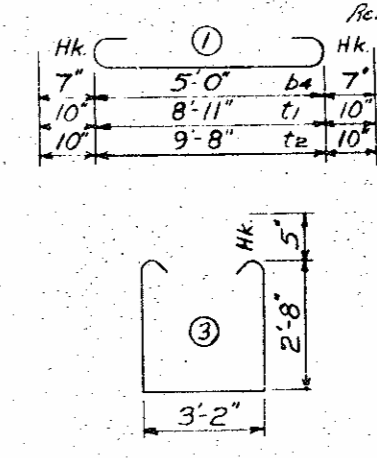
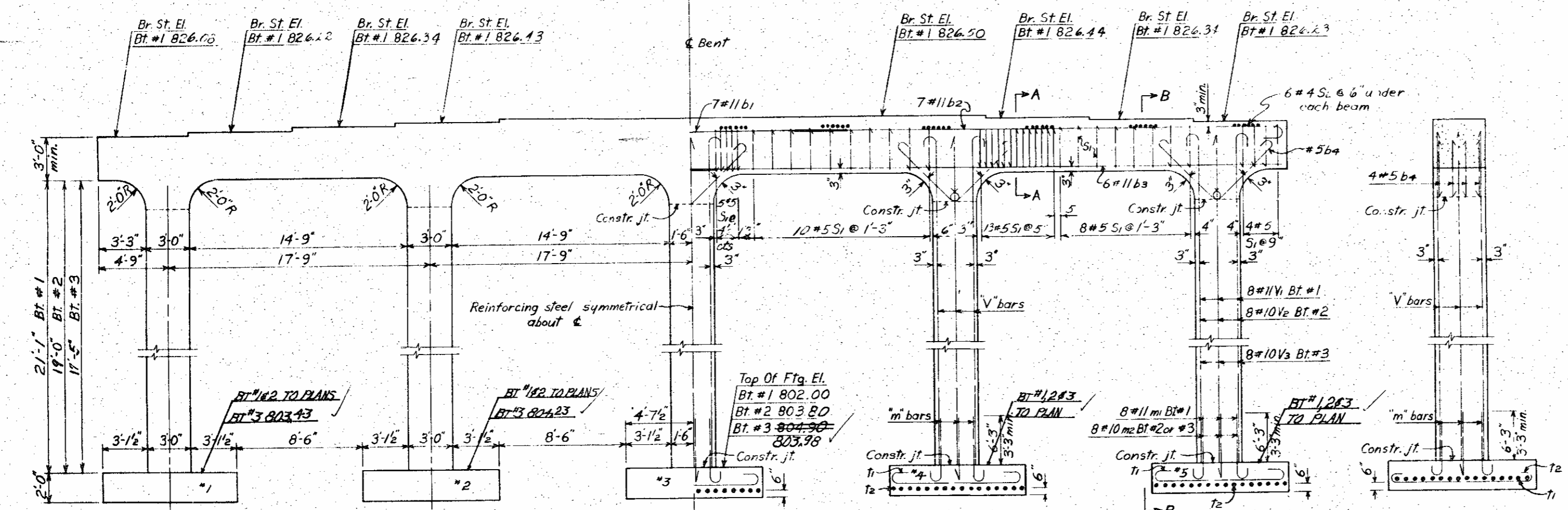


SECTION A-A
 NOTE: Steel in cap may be shifted to clear anchor bolts

BILL OF MATERIAL FOR ONE BENT - 3 REQD

BAR NO.	SIZE	TYPE	LENGTH	WEIGHT
b1	#11	2	52'-4"	1946
b2	#11	2	34'-7"	1286
b3	#11	1	41'-10"	2667
b4	#5	1	6'-2"	257
Bent #1				
v1	#11	2	24'-11"	5295
Bent #2				
v2	#10	2	22'-8"	3901
Bent #3				
v3	#10	2	21'-1"	3629
Bent #1				
m1	#11	2	9'-4"	1983
Bent #2 & #3				
m2	#10	2	9'-2"	1578
Tr				
t1	#7	1	10'-7"	1730
t2	#7	1	11'-4"	1853
Sr				
s1	#5	3	9'-4"	779
s2	#4	4	3'-11"	188

Bent #1	Reinforcing Steel	lbs. 17,184
	Class A Conc.	cu. yds. 110.9
	UNCL. STR. EXCAV. CUYDS	162.3
Bent #2	Reinforcing Steel	lbs. 16,185
	Class A Conc.	cu. yds. 106.8
	UNCL. STR. EXCAV. CUYDS	133.0
Bent #3	Reinforcing Steel	lbs. 15,283
	Class A Conc.	cu. yds. 102.9
	UNCL. STR. EXCAV. CUYDS	102.9

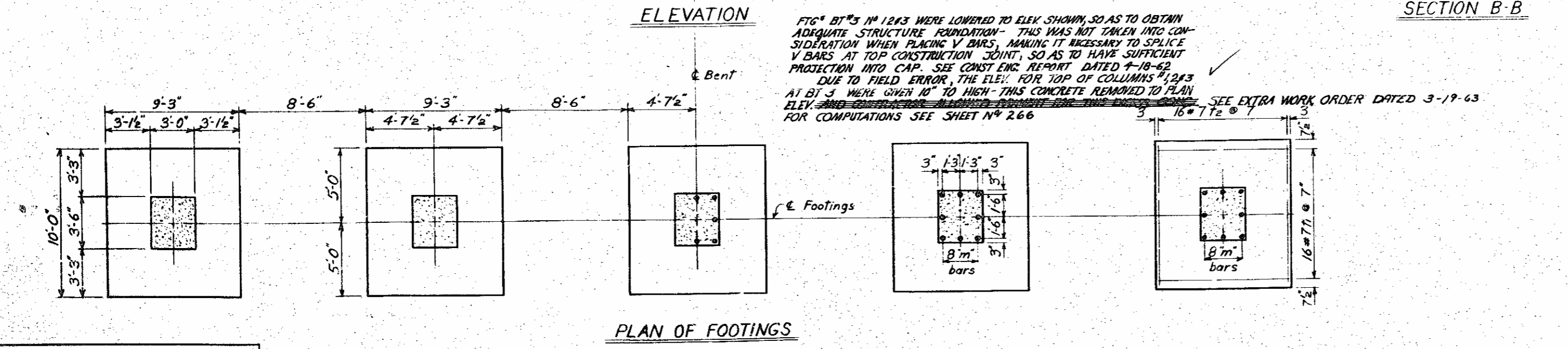


SECTION B-B

BAR TYPES

All dimensions are out to out

PROJECT NO. 8.17374
FORSYTH COUNTY
STATION: 399+20 L³



PLAN OF FOOTINGS

FIG. # BT #3 NO. 12#3 WERE LOWERED TO ELEV. SHOWN, SO AS TO OBTAIN ADEQUATE STRUCTURE FOUNDATION - THIS WAS NOT TAKEN INTO CONSIDERATION WHEN PLACING V BARS, MAKING IT NECESSARY TO SPLICE V BARS AT TOP CONSTRUCTION JOINT, SO AS TO HAVE SUFFICIENT PROJECTION INTO CAP. SEE CONST. ENG. REPORT DATED 4-18-62. DUE TO FIELD ERROR, THE ELEV. FOR TOP OF COLUMNS #1, #2 & #3 AT BT #3 WERE GIVEN 10" TO HIGH - THIS CONCRETE REMOVED TO PLAN ELEV. FOR COMPUTATIONS SEE SHEET NO. 266. SEE EXTRA WORK ORDER DATED 3-19-63.

DESIGNED BY: J. J. Messinger, Jr.
 CHECKED BY: J. L. Blackman
 DATE: AUG. 1960

Revision No. 1: Revised for change in span lengths 2/20/62. N.C.C. 1962

STATE OF NORTH CAROLINA
 STATE HIGHWAY COMMISSION
 INTERIOR BENTS
 No. 1, No. 2 & No. 3
 AUGUST 1960
 5-20
 83

FED. ROAD DIST. NO.	STATE	PROJECT NO.
3	N.C.	8.17374
F.A. Proj. F-111(17)		68
		271

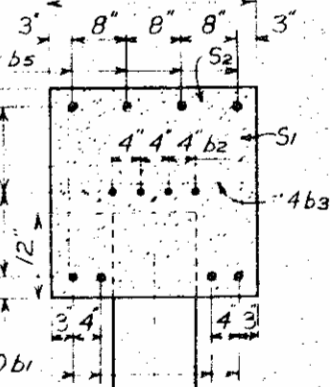
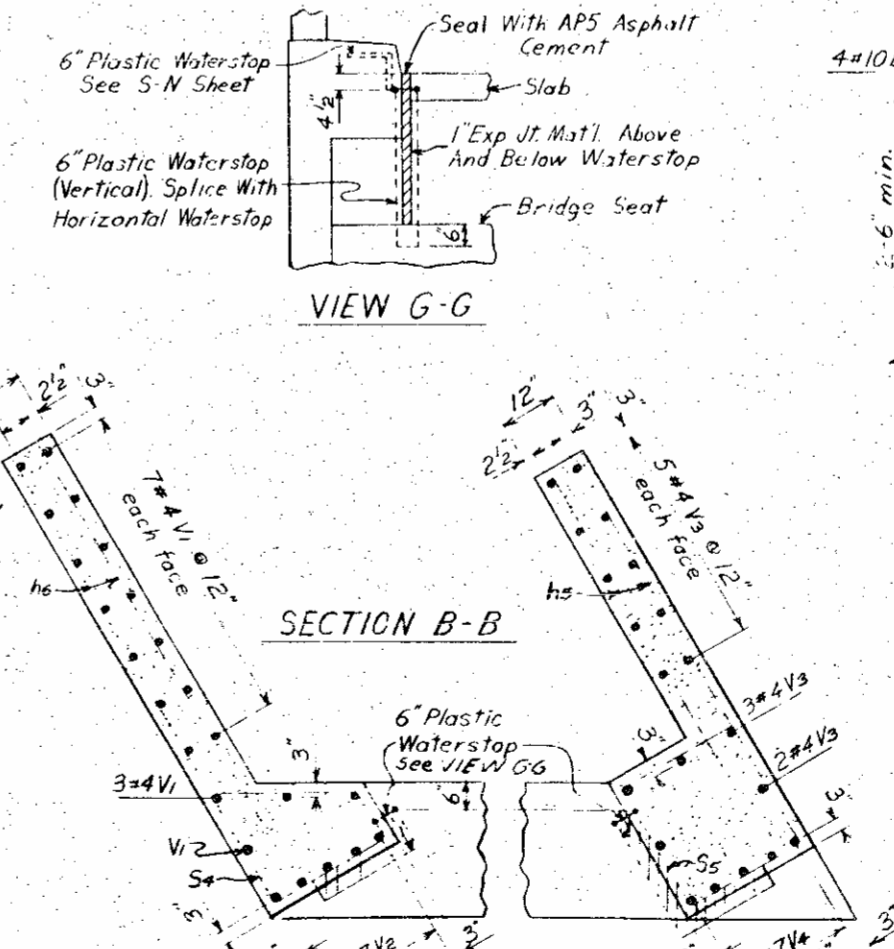
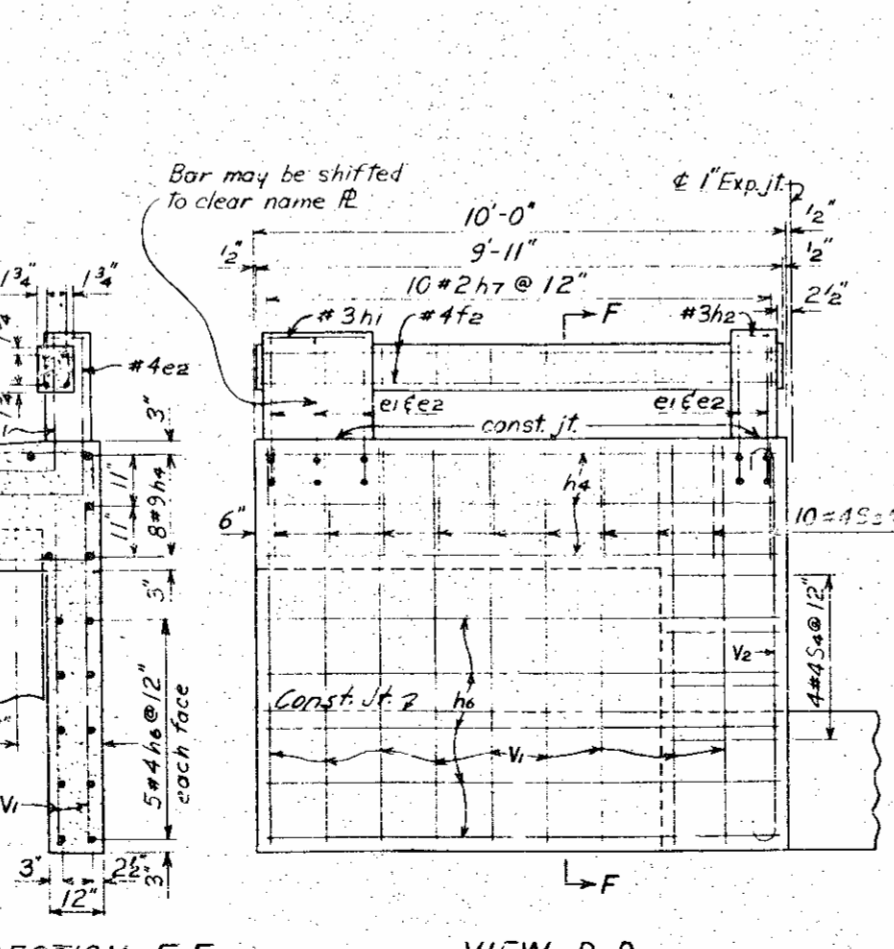
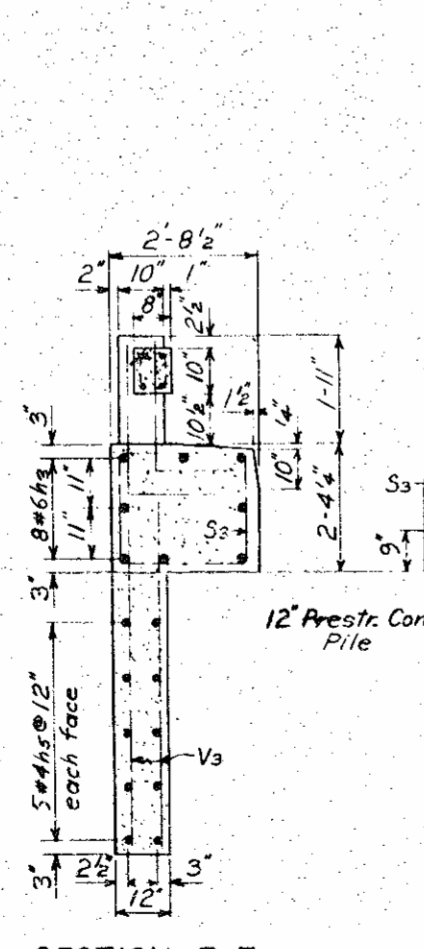
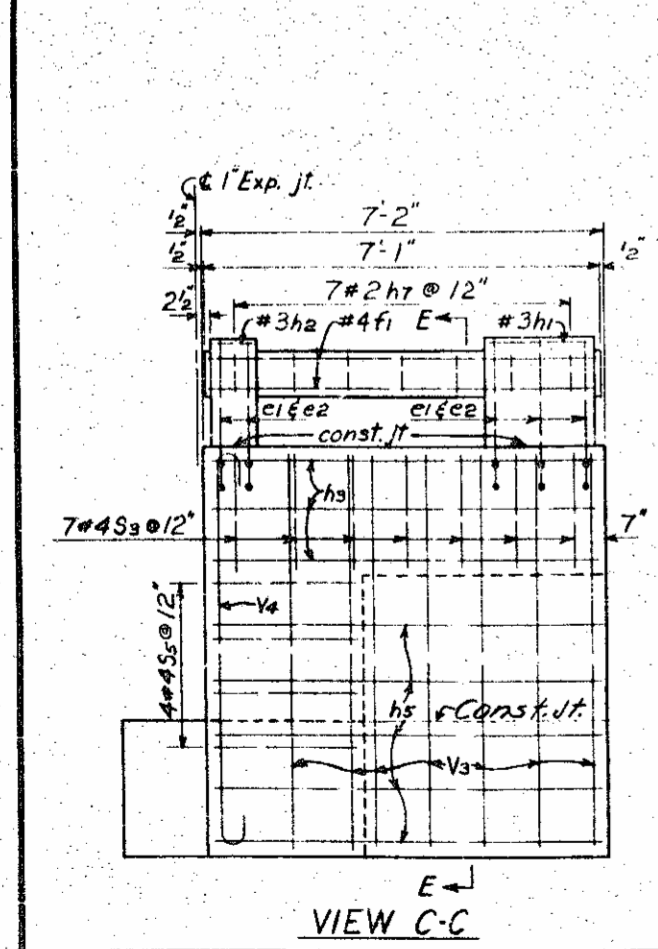
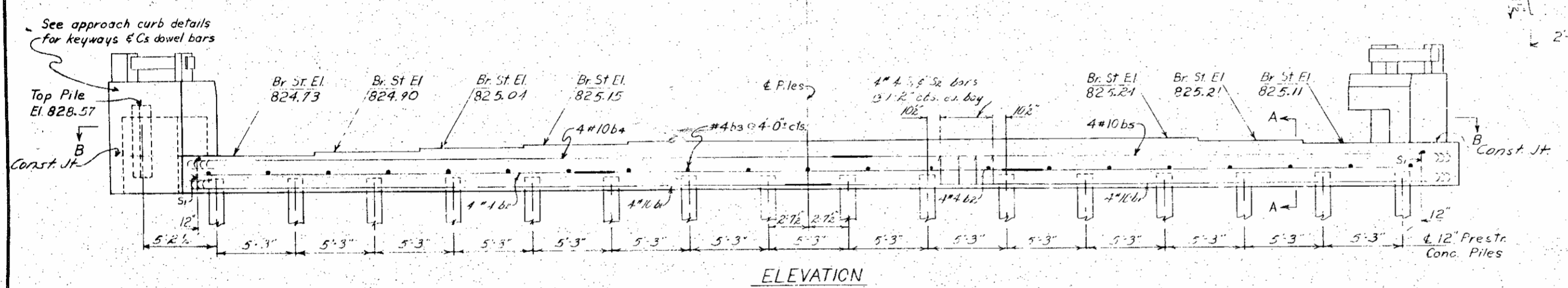
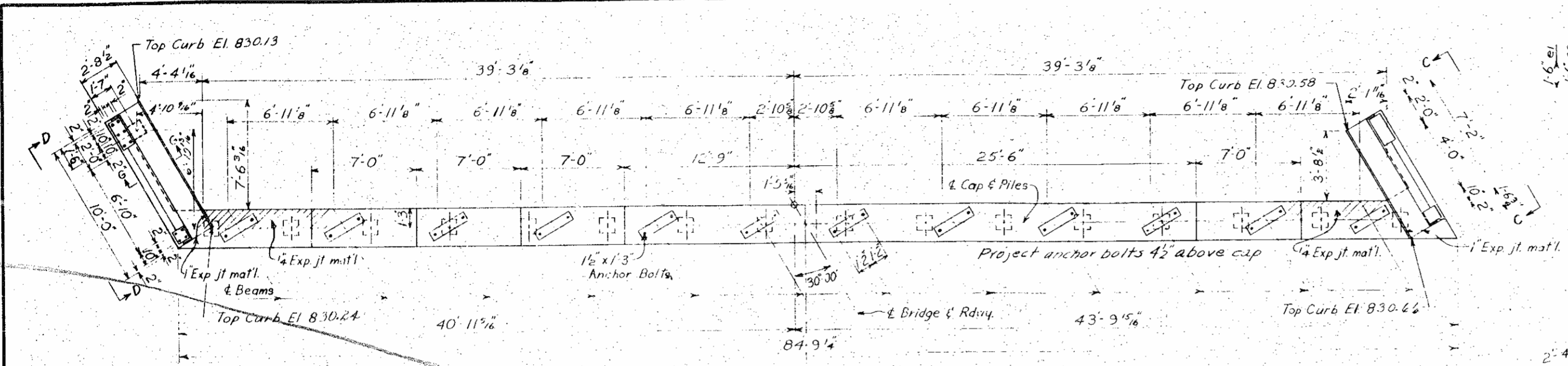
BILL OF MATERIAL					
END BENT No 2					
BAR NO.	SIZE	TYPE	LENGTH	WEIGHT	
b1	#10	4	46'-1"	1586	
b2	#4	Str.	29'-0"	232	
b3	#4	Str.	2'-2"	83	
b4	#10	4	48'-6"	835	
b5	#10	4	43'-3"	744	
e1	#4	1	3'-8"	24	
e2	#4	1	4'-3"	28	
f1	#4	Str.	6'-10"	18	
f2	#4	Str.	9'-5"	25	
h1	#3	5	5'-2"	4	
h2	#3	5	2'-10"	2	
h3	#6	Str.	6'-10"	82	
h4	#9	Str.	9'-4"	254	
h5	#4	Str.	6'-10"	46	
h6	#4	Str.	9'-6"	63	
h7	#2	5	2'-7"	7	
S1	#4	7	7'-3"	300	
S2	#4	2	2'-11"	121	
S3	#4	5	9'-3"	105	
S4	#4	6	8'-11"	24	
S5	#4	5	10'-4"	28	
V1	#4	Str.	7'-10"	94	
V2	#7	3	9'-6"	97	
V3	#4	Str.	8'-0"	80	
V4	#7	3	9'-8"	99	

Reinforcing Steel lbs. 4928
 Class "A" Conc. cu. yds. 30.4
 12 Prest. Conc. Piles No. 17
 12 Prest. Conc. Piles lin. ft. 306
 IN PLACE 306.00
 PAY CUTOFF 00.00

* Conc. displaced by piles has been deducted

PROJECT NO. 8.17374
 FORSYTH COUNTY
 STATION: 399+20 L³

STATE OF NORTH CAROLINA
 STATE HIGHWAY COMMISSION
 END BENT No. 2
 AUGUST 1960
 SHEET NO. 5-21
 TOTAL SHEETS 83



SPECIAL APPROVED BY: R. J. Manning, Jr. DATE: AUG. 1960
 DRAWN BY: R. J. Manning, Jr. DATE: AUG. 1960
 CHECKED BY: L. L. Blanton DATE: Aug. 1960

Revision #1: Revised for change in span lengths 2/29/62