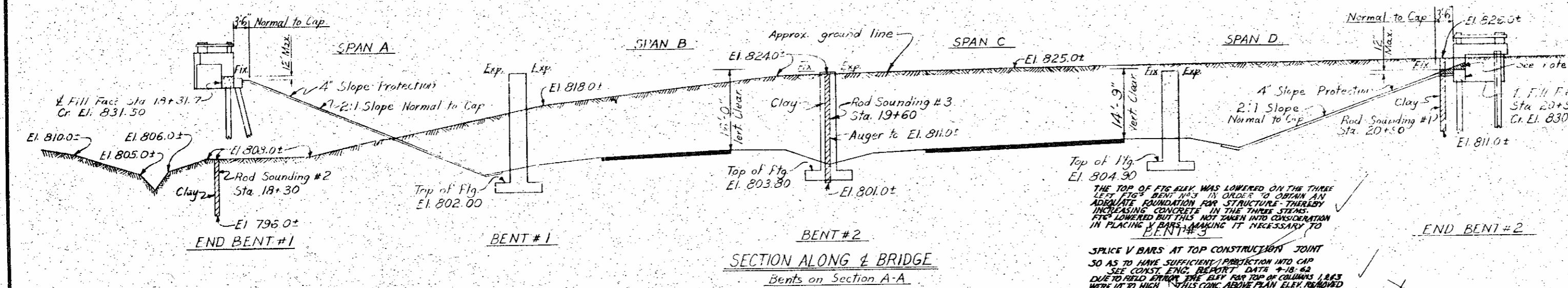
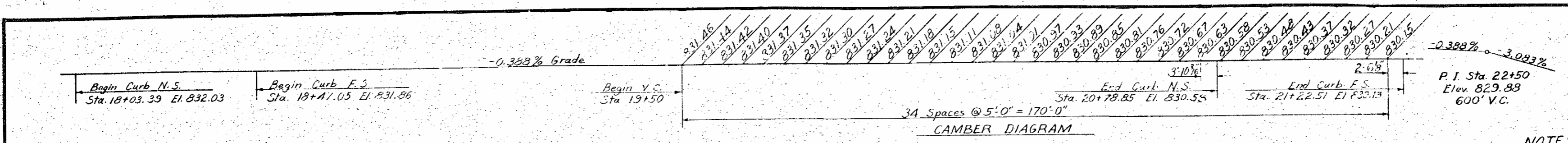


574  
17  
271

NO. ROAD REGION	STATE	PROJECT NO.
3	N.C.	6,173,74
F. A. PROJECT		F-111(17)
55	271	



**NOTES**

Assumed Live Load = H20-S16 (14) or Alternate Loading  
For other design data and general note see sheet S-N.

Computed foundation load for Bents #1, #2, and #3 equals 1 1/2 tons per sq. ft.

No test piles are required. Order length shall be 30 Ft. for End Bent #1 and 18 Ft. for End Bent #2.

All piles to be driven to a minimum bearing capacity of 30 tons each.

The contractor will be required to excavate completely through the fill before driving piles for End Bent #1. See Sheet S-N.

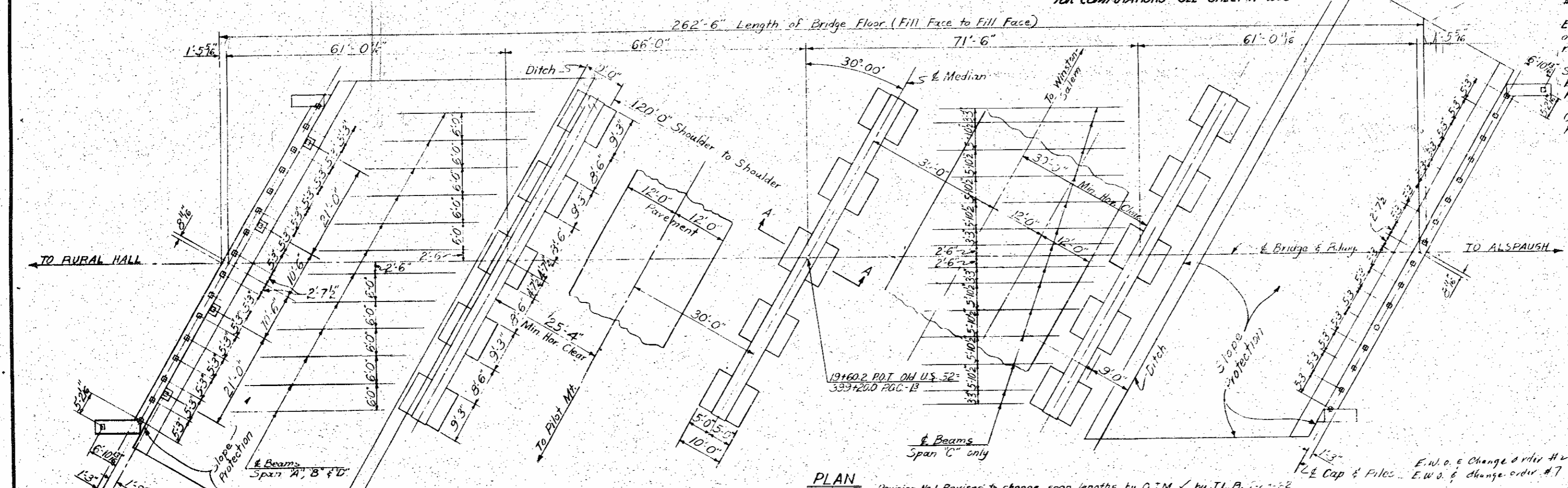
Work is not to be started on bents #1, #2, & #3 until after roadway section has been excavated by the roadway contractor.

Unclassified structure excavation for Bents #1, #2, & #3 to be measured from surface of cut.

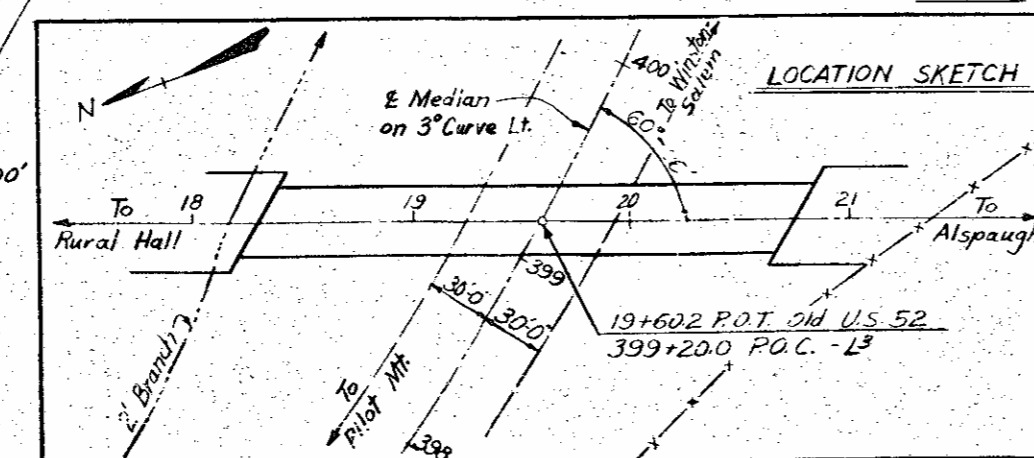
Elevations shown in camber diagram are top of curb elevations taken 34'-1 1/2" from & of roadway.

Shaded area at End Bent #2 to be excavated by the structure contractor. See Special Provisions.

Concrete in Compression.....1000 lbs. per sq. in.  
Reinforcing Steel in Tension.....18,000 lbs. per sq. in.



B.M. # 32 Bolt in root of 18" Oak stump 200'  
Lt. Sta 385+65 L<sup>3</sup> Elev. 849.93 M.S.L.



Revision No. 1 - Revised to change span lengths by O.J.M. by J.L.B. 1-22

	TOTAL BILL OF MATERIAL						
	Class A Conc.	Reinforcing Steel	45' Prest. Concrete	12' Prest. Concrete	Unclass. Structure	Excav. Protection	18" PREST. CONC. PILES IN PLACE (CUT OFF AT TOP)
	Cu Yds.	Lbs.	Nb. Lin. Ft.	Nb. Em. Ft.	Cu. Yds.	Sq. Yds.	Sq. Yds.
Superstructure	561.7	135,271	50,326.43			601.41	62125
End Bent #1	31.0	5,548		21	630	745.163	875
Bent #1	110.9	17,934				750.133	
Bent #2	108.8	16,185				750.228	
End Bent #2	30.4	4,928		17	306	536.27	316.00
Approach Curbs	3.2	76				575	0
<b>TOTALS</b>	<b>949.6</b>	<b>186,516</b>	<b>50,326.43</b>	<b>38</b>	<b>936</b>	<b>422</b>	<b>92725</b>

PROJECT No. 6,173,74  
FORSYTH COUNTY  
STATION: 399+20-L<sup>3</sup>

STATE OF NORTH CAROLINA  
STATE HIGHWAY COMMISSION  
GENERAL DRAWING FOR BRIDGE  
OVER PROJECT ON RELOC. OLD  
U.S. 52 BETWEEN U.S. 52 AND  
ALSPAUGH  
FEBRUARY, 1962

DESIGNED BY: J.L. B...  
CHECKED BY: J.L. B...  
DATE: 2/23/62

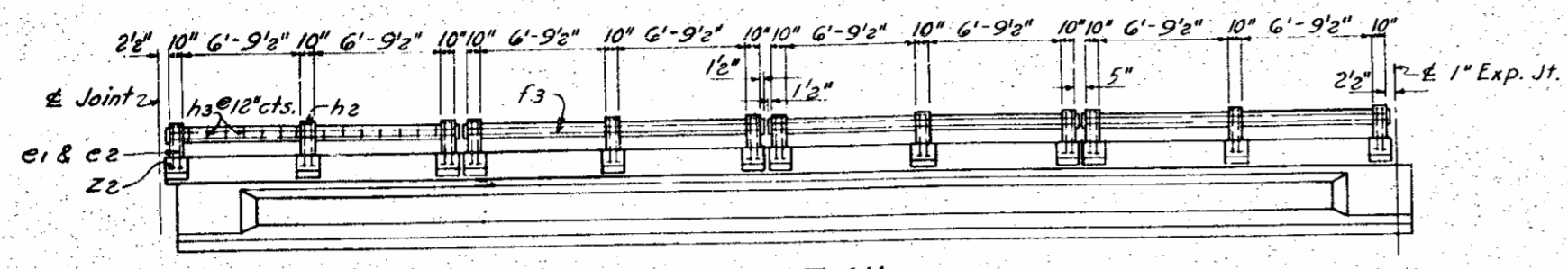
APPROVED BY: H.W. J...  
DATE: 2/23/62

5-11  
85

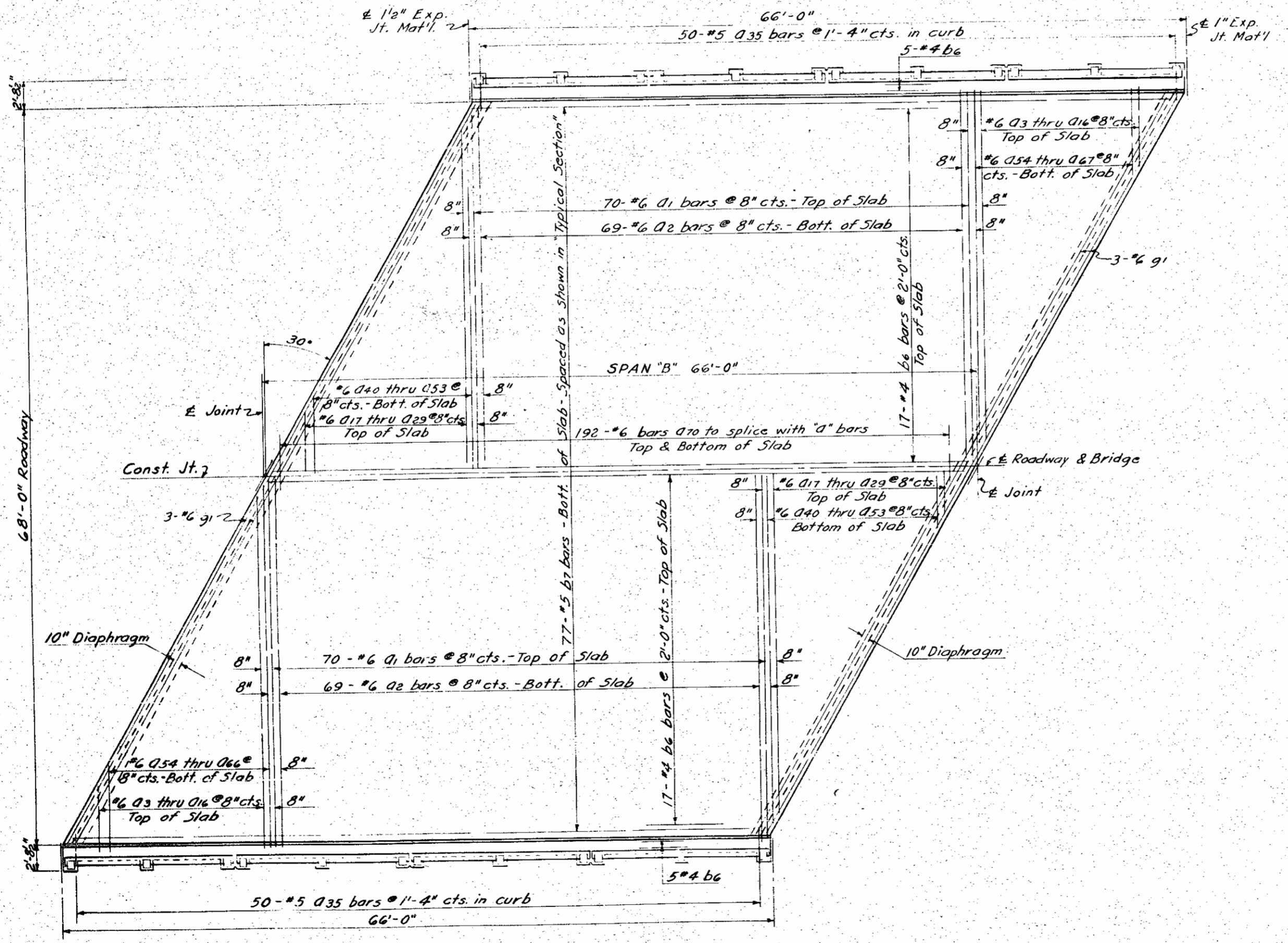
52-62-230

PROJECT NO. 817374  
SHEET 271

NO. ROAD REGION STATE PROJECT NO.  
3 N.C. 817374  
F.A. PROJECT F-111 (17)  
58 271



ELEVATION



PLAN

817374  
UNTY  
20.0 L3  
MISSION

PROJECT No. 8.17374  
FORSYTH COUNTY  
STATION: 399 + 20.0 L3

STATE OF NORTH CAROLINA STATE HIGHWAY COMMISSION	
SUPERSTRUCTURE SPAN-B	
FEB., 1962	
DATE A.R.S. Feb, 1962	SHEET 5-13 TOTAL 83

DRAWN BY B. E. Lugg DATE Feb, 1962  
CHECKED BY L. L. Blocker DATE Feb, 1962

Rev. 1 - Revised for change in span lengths. by A.R.S. Feb, 1962





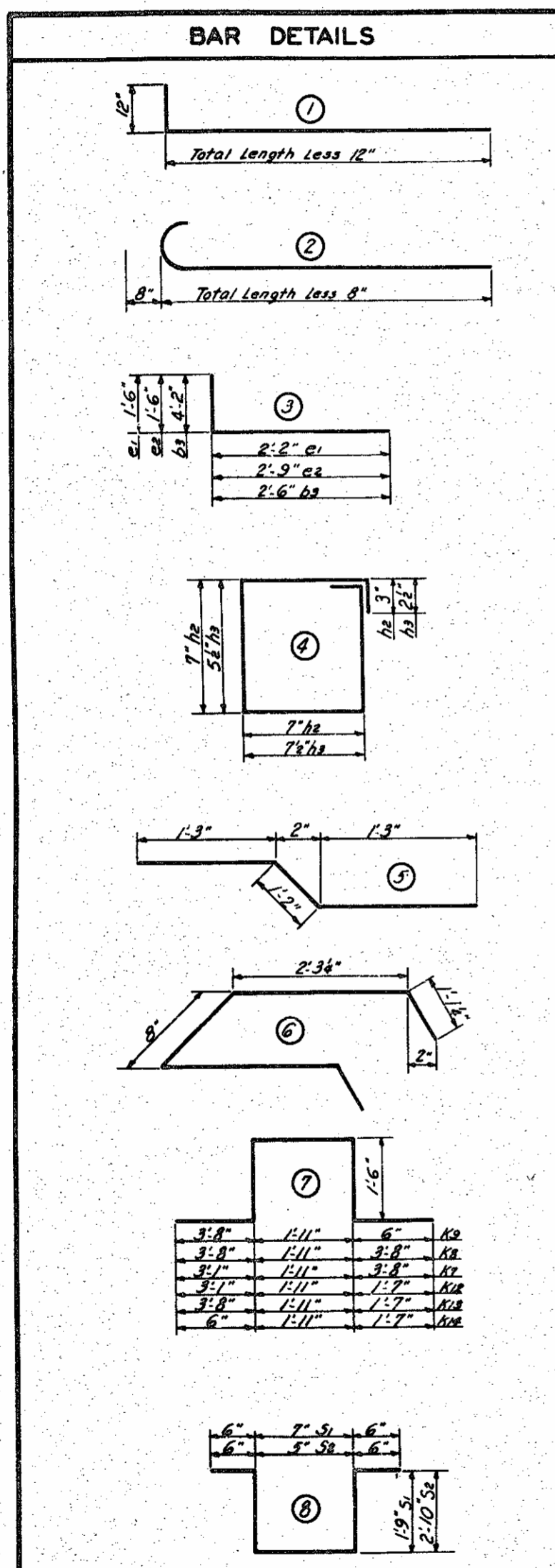
PROJECT NO. 8.17374  
SHEET (17)  
271

TO FINAL  
DEFLECTED  
AD

8.17374  
COUNTY  
0.0.13

PERMISSION  
BILL PLATE

5-15  
TOTAL SHEETS  
83



Note: All bar dimensions are out to out.  
DRAWN BY *W. A. King, Jr.* DATE Feb. 1962  
CHECKED BY *L. Block* DATE Feb. 1962

BILL OF MATERIAL FOR SPANS										BILL OF MATERIAL FOR SPANS																
BAR NO.	SPAN A & D	SPAN B	SPAN C	TOTAL	SIZE	TYPE	LENGTH	WEIGHT	BAR NO.	SPAN A & D	SPAN B	SPAN C	TOTAL	SIZE	TYPE	LENGTH	WEIGHT	BAR NO.	SPAN A & D	SPAN B	SPAN C	TOTAL	SIZE	TYPE	LENGTH	WEIGHT
a1	250	140	158	548	#6	2	35'-3"	29,014	a44	8	4	4	16	#6	1	6'-3"	150									
a2	246	138	156	540	#6	1	35'-7"	28,754	a47	8	4	4	16	#6	1	3'-11"	94									
a3	8	4	4	16	#6	2	33'-0"	792	a70	364	192	210	766	#6	Str.	4'-6"	5,177									
a4	8	4	4	16	#6	2	30'-9"	740																		
a5	8	4	4	16	#6	2	28'-5"	684																		
a6	8	4	4	16	#6	2	26'-1"	628	b1	244			244	#4	Str.	2'-7"	3,518									
a7	8	4	4	16	#6	2	23'-9"	572	b2	308			308	#5	Str.	32'-2"	10,333									
a8	8	4	4	16	#6	2	21'-6"	516	b3	198			198	#4	3	6'-8"	882									
a9	8	4	4	16	#6	2	19'-2"	460	b4	10			10	#4	Str.	20'-4"	136									
a10	8	4	4	16	#6	2	16'-10"	404	b5	10			10	#4	Str.	19'-0"	127									
a11	8	4	4	16	#6	2	14'-7"	350	b6		132		132	#4	Str.	22'-9"	2,006									
a12	8	4	4	16	#6	2	12'-3"	294	b7		154		154	#5	Str.	33'-9"	5,421									
a13	8	4	4	16	#6	2	9'-11"	238	b8			132	132	#4	Str.	24'-6"	2,160									
a14	8	4	4	16	#6	2	7'-7"	182	b9			150	150	#5	Str.	36'-6"	5,710									
a15	8	4	4	16	#6	2	5'-4"	126																		
a16	8	4	4	16	#6	2	3'-0"	72																		
a17	8	4	4	16	#6	Str.	31'-6"	756	c1	96	48	48	192	#4	3	3'-8"	470									
a18	8	4	4	16	#6	Str.	29'-2"	700	c2	96	48	48	192	#4	3	4'-3"	545									
a19	8	4	4	16	#6	Str.	26'-10"	644																		
a20	8	4	4	16	#6	Str.	24'-7"	592	f1	32			32	#4	Str.	14'-10"	317									
a21	8	4	4	16	#6	Str.	22'-3"	536	f2	32			32	#4	Str.	14'-5"	308									
a22	8	4	4	16	#6	Str.	19'-11"	480	f3		32		32	#4	Str.	16'-1"	344									
a23	8	4	4	16	#6	Str.	17'-7"	424	f4			32	32	#4	Str.	17'-5"	372									
a24	8	4	4	16	#6	Str.	15'-4"	368																		
a25	8	4	4	16	#6	Str.	13'-0"	312																		
a26	8	4	4	16	#6	Str.	10'-8"	256	g1	12	12	12	36	#6	Str.	41'-0"	2,217									
a27	8	4	4	16	#6	Str.	8'-5"	202																		
a28	8	4	4	16	#6	Str.	6'-1"	146																		
a29	8	4	4	16	#6	Str.	3'-9"	90	h2	48	24	24	96	#3	4	2'-10"	102									
a31	20			20	#6	Str.	33'-8"	1,011	h3	256	136	148	540	#2	4	2'-7"	233									
a35	182	100	108	390	#5	5	3'-8"	1,492	k1	18			18	#4	Str.	26'-10"	323									
a40	8	4	4	16	#6	Str.	32'-1"	772	k2	6			6	#6	Str.	27'-5"	247									
a41	8	4	4	16	#6	Str.	23'-9"	716	k3	6			6	#4	Str.	3'-10"	15									
a42	8	4	4	16	#6	Str.	27'-5"	660	k4	2			2	#6	Str.	3'-3"	10									
a43	8	4	4	16	#6	Str.	25'-2"	604	k5	60			60	#4	Str.	5'-0"	200									
a44	8	4	4	16	#6	Str.	22'-10"	548	k6	20			20	#6	Str.	4'-5"	133									
a45	8	4	4	16	#6	Str.	20'-6"	492	k7	8			8	#8	7	11'-8"	498									
a46	8	4	4	16	#6	Str.	18'-2"	436	k8	32	32	24	88	#8	7	12'-3"	2,878									
a47	8	4	4	16	#6	Str.	15'-11"	384	k9	8	8		16	#8	7	9'-1"	388									
a48	8	4	4	16	#6	Str.	13'-7"	326	k10	80	40		120	#6	Str.	5'-3"	946									
a49	8	4	4	16	#6	Str.	11'-3"	270	k11	8	4	4	16	#6	Str.	4'-3"	102									
a50	8	4	4	16	#6	Str.	9'-0"	216	k12			8	8	#8	7	9'-7"	205									
a51	8	4	4	16	#6	Str.	5'-0"	162	k13			16	16	#8	7	10'-2"	434									
a52	8	4	4	16	#6	Str.	6'-8"	160	k14			8	8	#8	7	7'-0"	150									
a53	8	4	4	16	#6	Str.	4'-4"	104	k15			16	16	#6	Str.	2'-4"	56									
a54	8	4	4	16	#6	Str.	2'-0"	48	k16				32	#6	Str.	4'-11"	236									
a58	8	4	4	16	#6	1	33'-11"	816																		
a59	8	4	4	16	#6	1	31'-7"	760																		
a60	8	4	4	16	#6	1	29'-4"	704	s1	134	134	134	402	#4	8	5'-1"	1,365									
a61	8	4	4	16	#6	1	27'-0"	648	s2	216	108	104	428	#4	8	7'-1"	2,025									
a62	8	4	4	16	#6	1	24'-8"	592																		
a63	8	4	4	16	#6	1	22'-5"	540	z2	48	24	24	96	#5	6	7'-5"	743									
a64	8	4	4	16	#6	1	20'-1"	484																		
a65	8	4	4	16	#6	1	17'-9"	428																		
a66	8	4	4	16	#6	1	15'-5"	370																		
a67	8	4	4	16	#6	1	13'-2"	316																		
a68	8	4	4	16	#6	1	10'-10"	260																		
a69	8	4	4	16	#6	1	8'-6"	204																		

REINFORCING STEEL LBS. 135,271 ✓  
CLASS "A" CONCRETE CU. YDS. 361.7 ✓  
45" PRESTRESSED CONCRETE GIRDERS NO. 50 ✓  
45" PRESTRESSED CONCRETE GIRDERS LIN. FT. 3264.33 ✓

PROJECT NO. 8.17374  
FORSYTH COUNTY  
STATION: 399+20.0L

STATE OF NORTH CAROLINA  
STATE HIGHWAY COMMISSION  
SUPERSTRUCTURE  
BILL OF MATERIAL

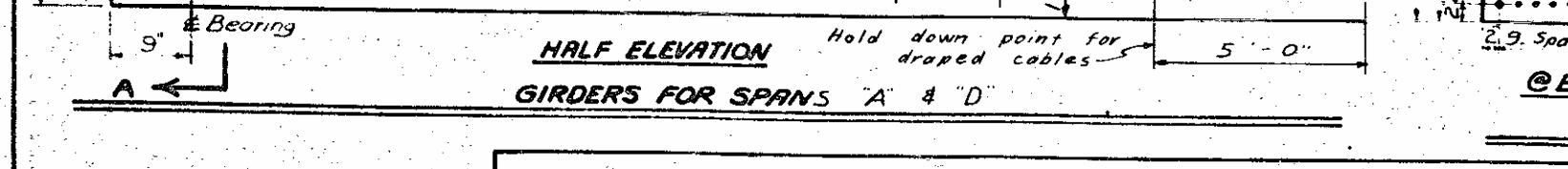
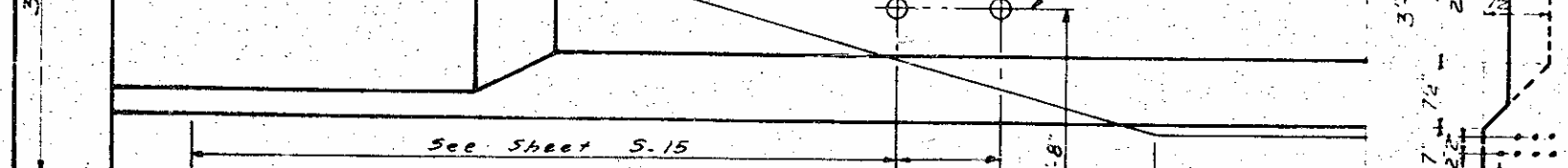
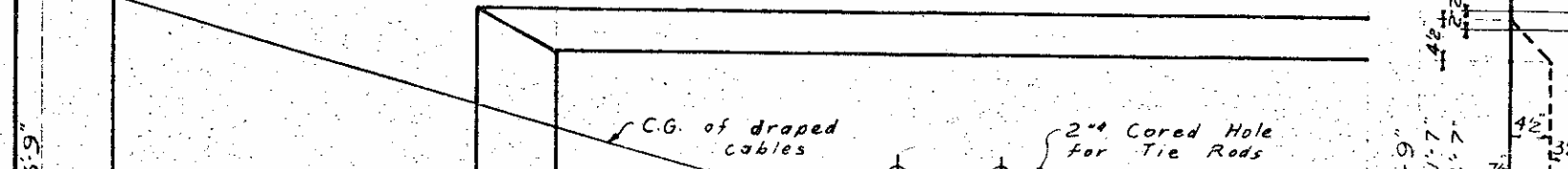
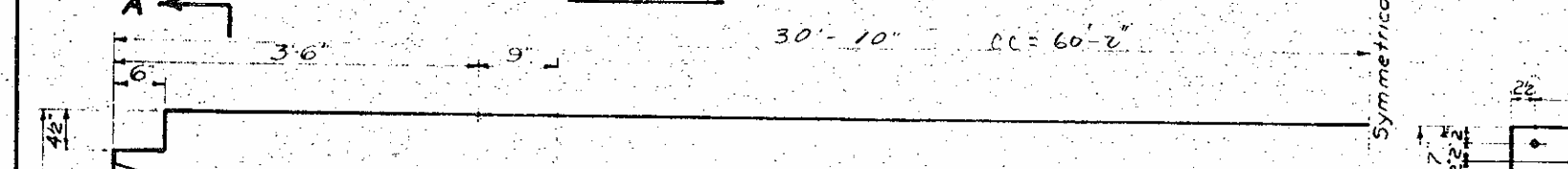
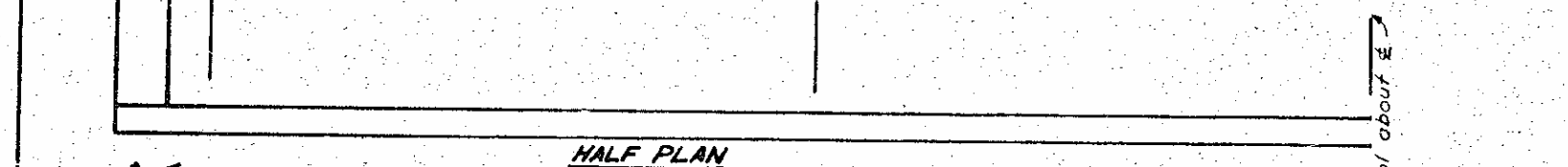
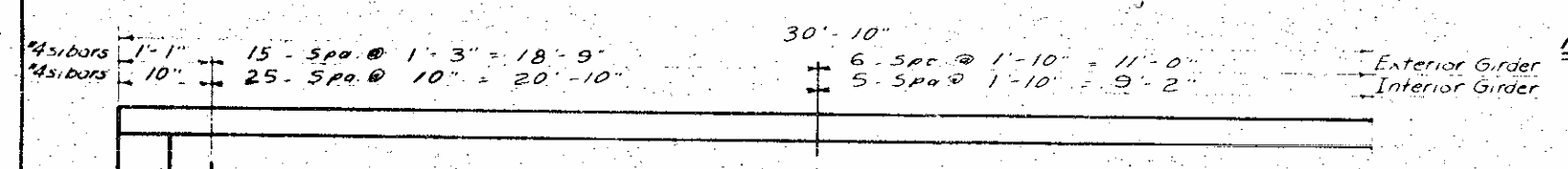
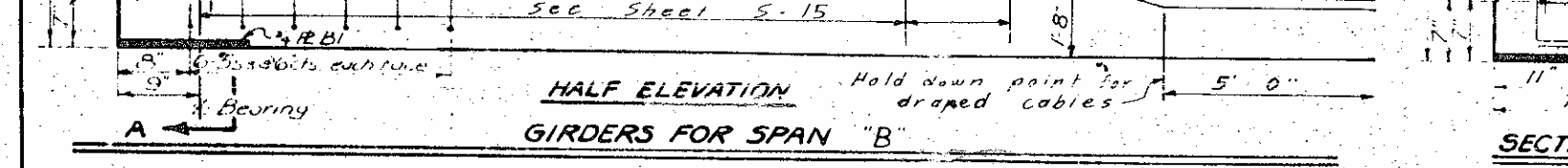
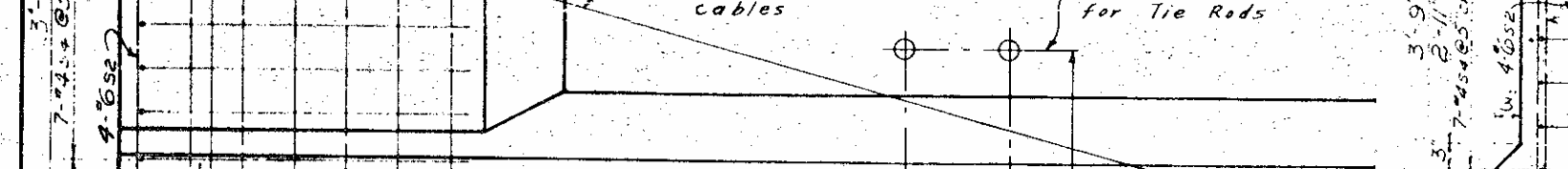
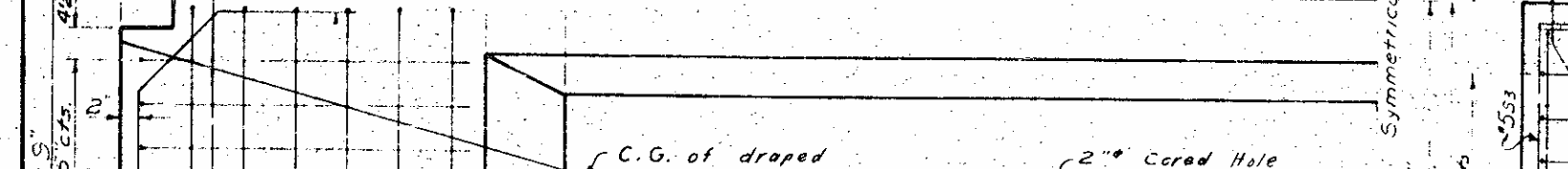
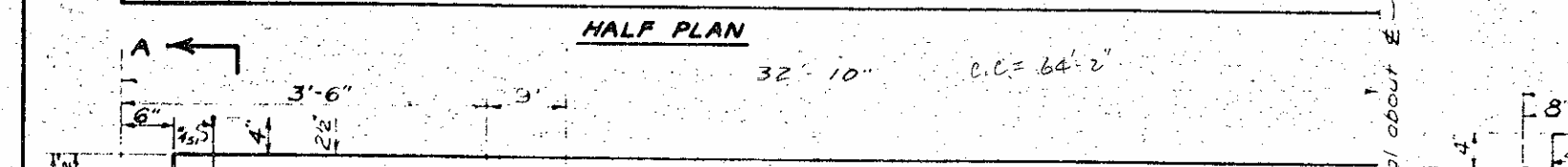
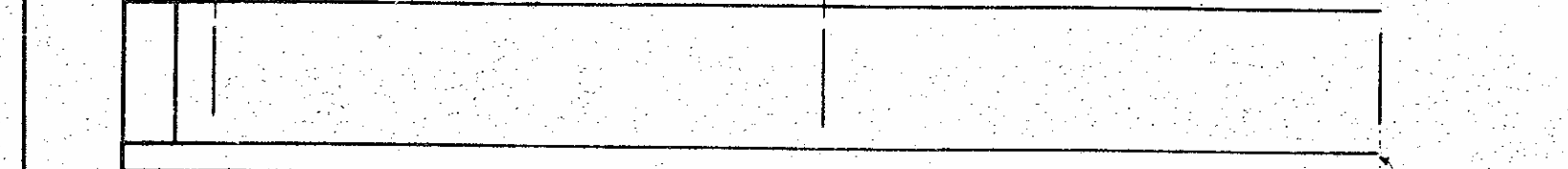
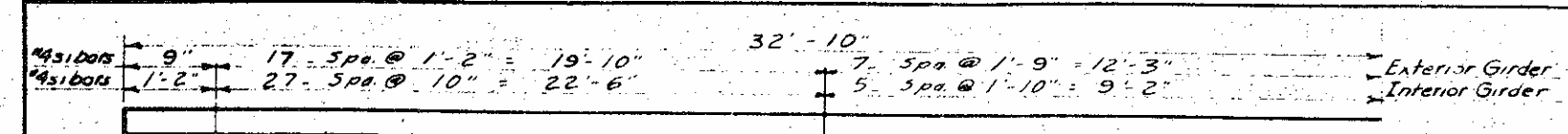
DATE  
BY  
C.A.K. 2-23-62

SHEET NO. 5-16  
TOTAL SHEETS 83

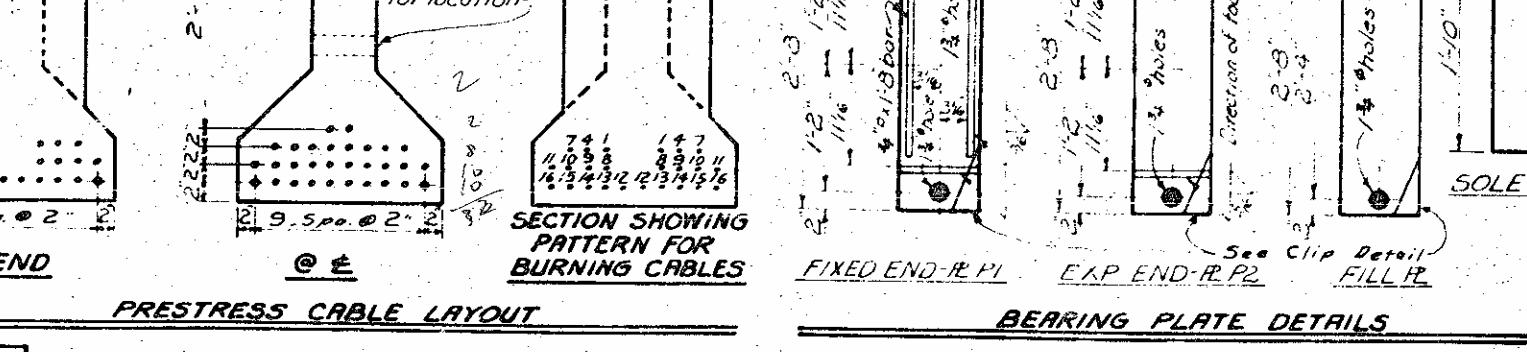
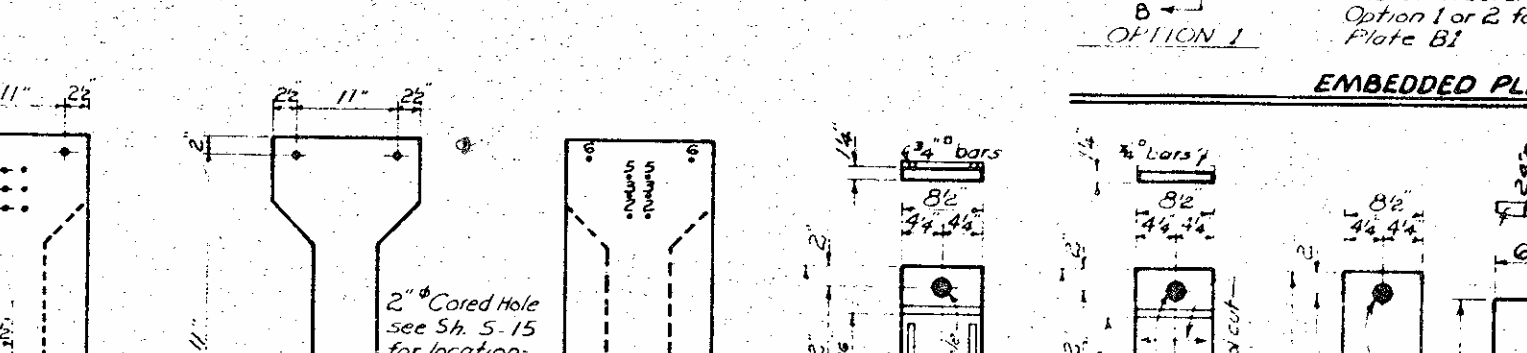
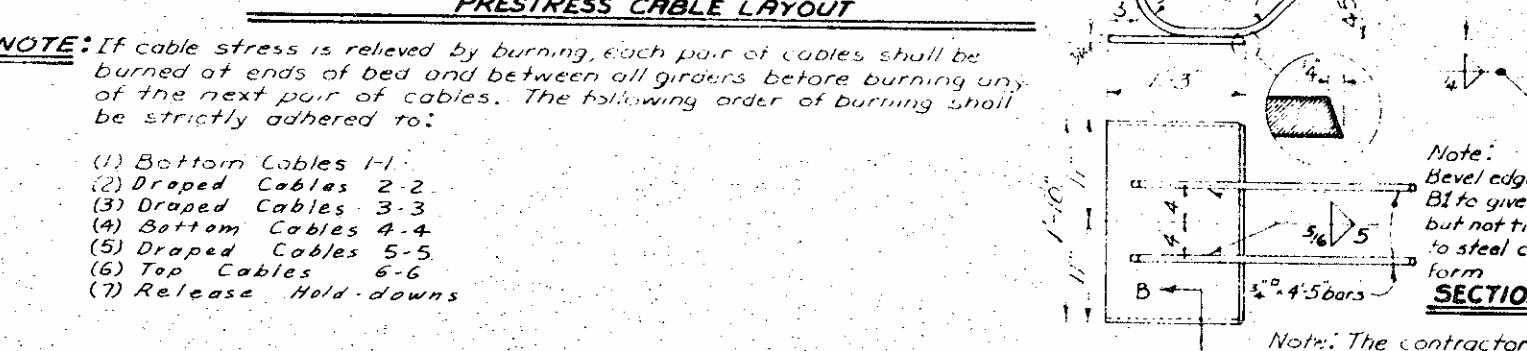
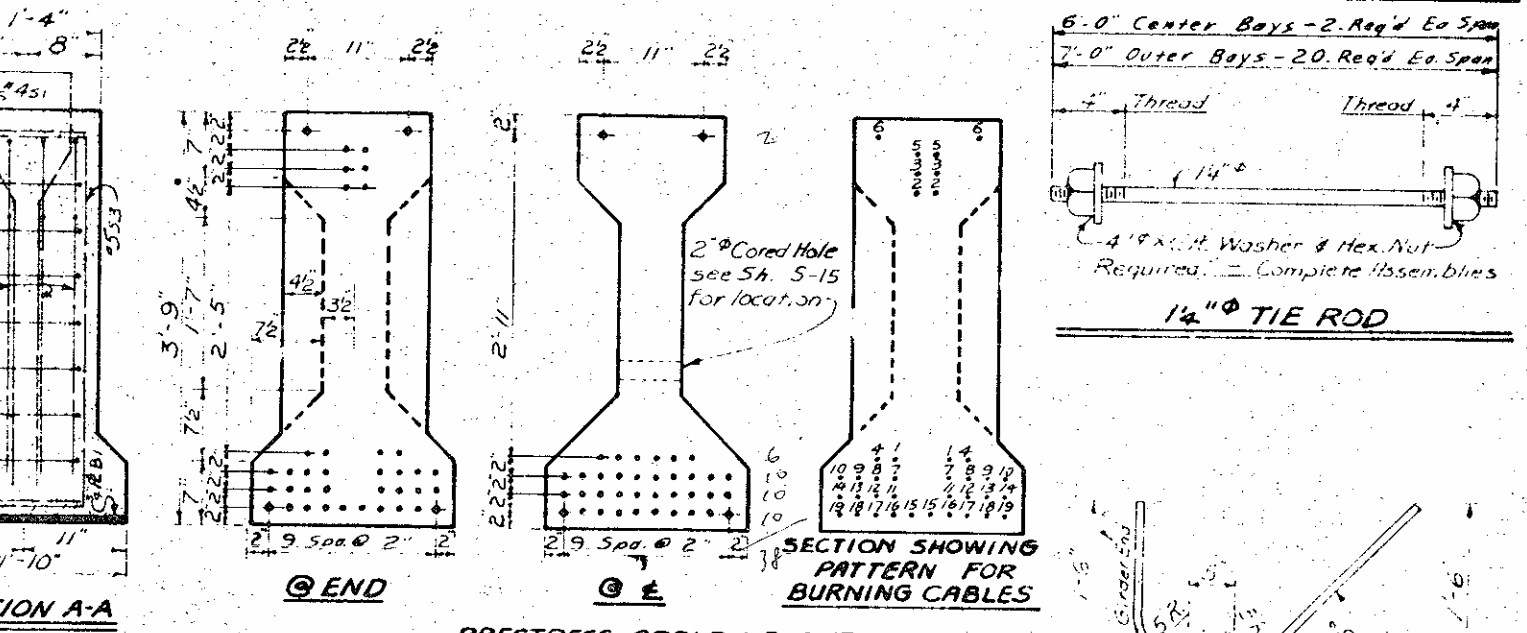
Revision No. 1 - Revised to change span lengths 2-23-62 by C.A.K. ✓ by J.L.B.

4/11/62-21-62 83

STATE PROJECT NO.  
N.C. 8.17374  
F. 111 (17)  
271



Bar No.	Size	Spac.	Length	Weight
49	#4	1'-8"	27.8	2.78
51	#4	1'-8"	36.9	3.69
52	#4	1'-8"	24.4	2.44
53	#4	2'-4"	3.6	0.36
54	#4	3'-7"	6.9	0.69



Reinforcing Steel	5,000 ps. Concrete	#5 R Cables
54.1 lbs	9.87 cu yds	3.8
63.2 lbs	9.87 cu yds	3.8
50.7 lbs	9.29 cu yds	3.2
60.9 lbs	9.29 cu yds	3.2

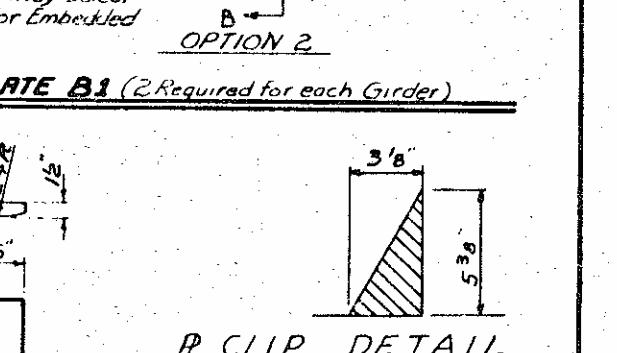
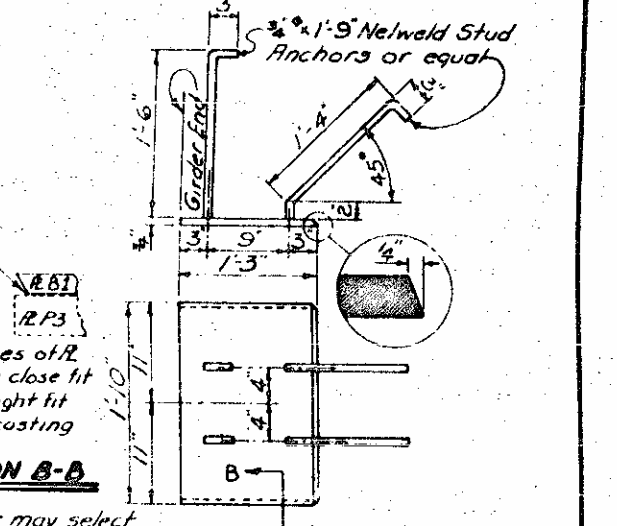
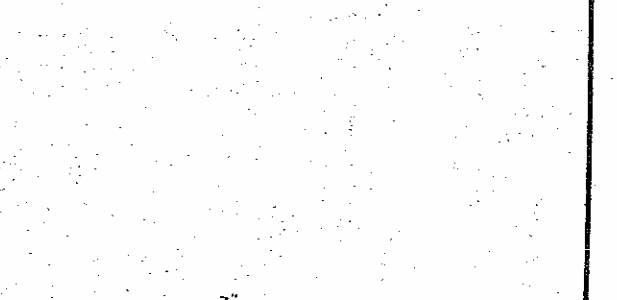
  

No.	Length	Total Length
2	65'-8"	131'-3"
10	65'-8"	656'-8"
4	61'-8"	246'-8"
20	61'-8"	1233'-3"

FED. ROAD DIST. NO.	STATE	PROJECT NO.
	N.C.	8.17374

**NOTES**  
 All prestress strands to be 7/8" Stress Relieved Cables. Each cable to be pre-stressed at 18,900 lbs.  
 Cables to be cut off flush with end of girder.

No surface finish will be required for prestressed concrete girders. However the outside face of the exterior girders shall be carefully cleaned of drippings and other discolorations.  
 See Specifications.



PROJECT No. 8.17374  
 FORSYTH COUNTY  
 STATION: 399+20 L<sup>3</sup>

STATE OF NORTH CAROLINA STATE HIGHWAY COMMISSION			
STANDARD 45" PRESTRESSED CONCRETE GIRDER SPANS 'A', 'B', & 'D'			
RUSH 1261			
NO.	BY	DATE	REVISIONS
1			
2	BMM	2-21-62	

8.17374  
 COUNTY  
 20.0L  
 POLINA  
 COMMISSION  
 URE  
 RIAL

S-16  
 83

**SPECIAL**  
 Assembled by B. D. Datta, Dare, N.C.  
 Checked by B. D. Datta, Dare, N.C.  
**STANDARD**  
 Drawn by C. J. Kiser  
 Checked by G. H. Kiser  
 DATE: Aug 3, 1961  
 DATE: Aug 3, 1961

Rev Dec 13, 1961: show cables cut off flush with end of girder by WAC / A-B  
 Rev #2: Revised to change span lengths. by BMM