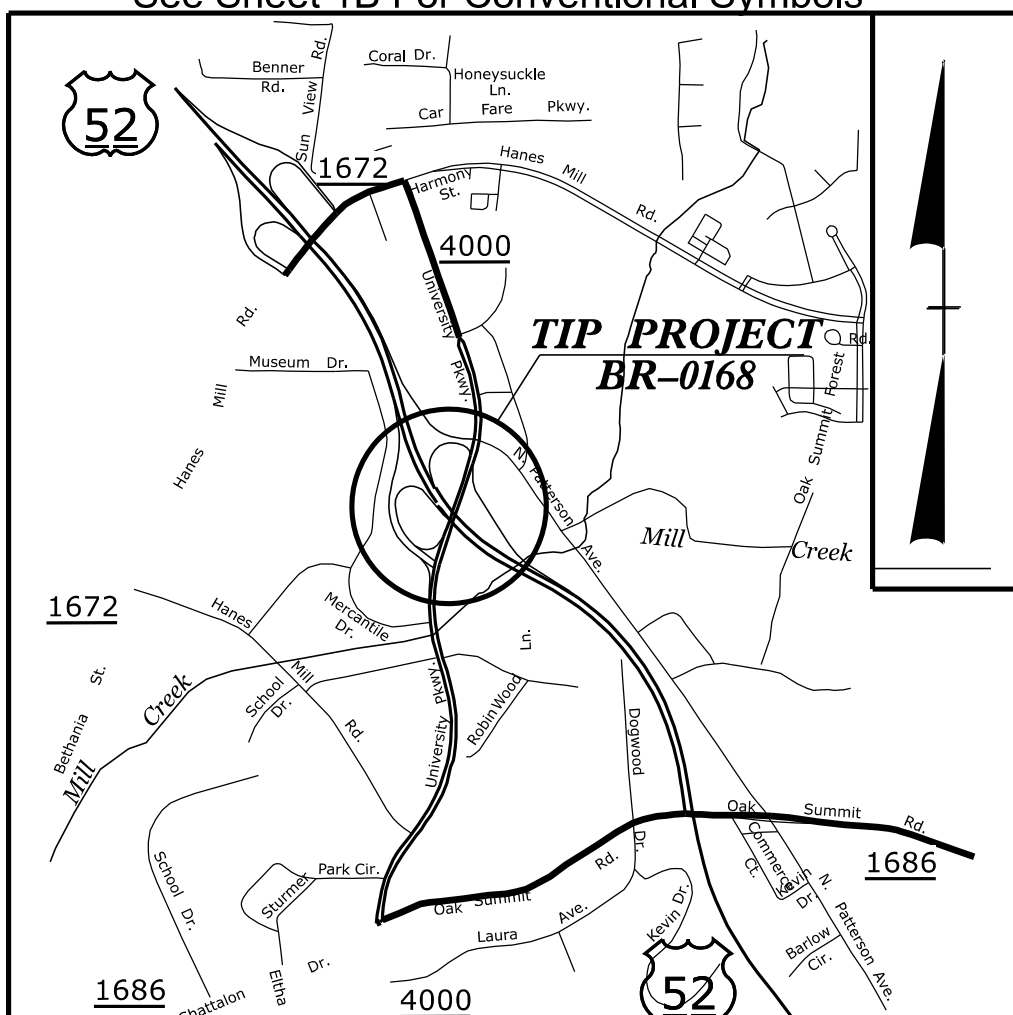


09/07/25

TIP PROJECT: BR-0168

See Sheet 1A For Index of Sheets  
See Sheet 1B For Conventional Symbols



VICINITY MAP

RW PLAN SET

# STATE OF NORTH CAROLINA DIVISION OF HIGHWAYS

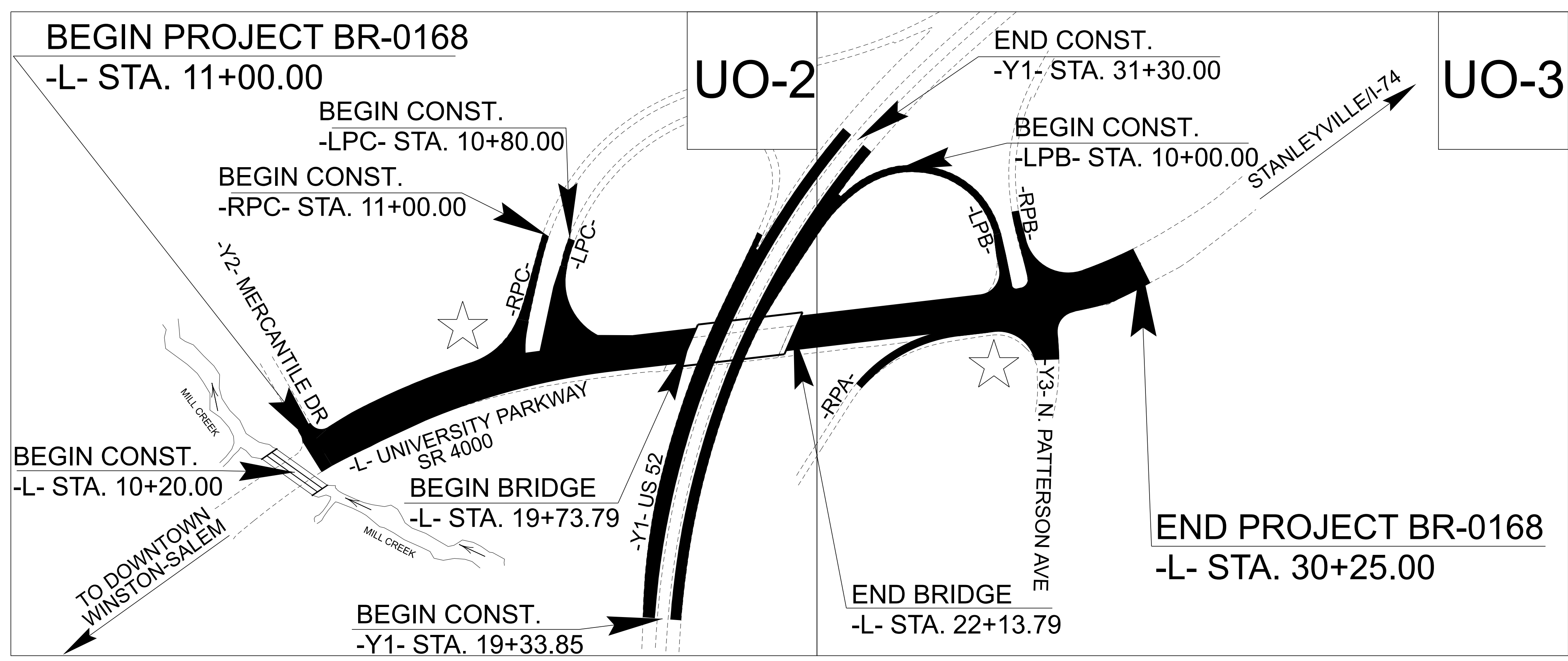
## UTILITIES BY OTHERS PLANS FORSYTH COUNTY

LOCATION: REPLACE BRIDGE 330289 ON SR 4000  
(UNIVERSITY PARKWAY) OVER US 52

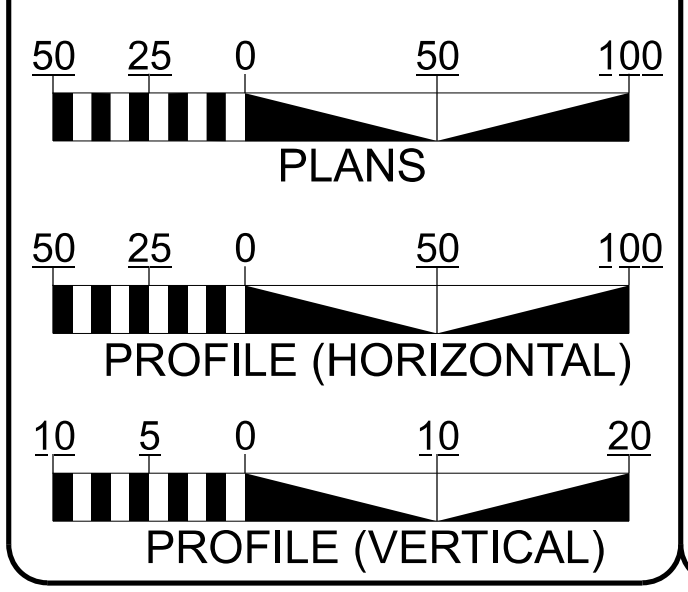
TYPE OF WORK: POWER (DISTRIBUTION), NATURAL GAS (DISTRIBUTION)  
AND COMMUNICATIONS

T.I.P. NO.	SHEET NO.
BR-0168	UO-1

NOTE:  
ALL UTILITY WORK SHOWN ON THIS SHEET WILL BE DONE BY OTHERS.  
NO PAYMENT WILL BE MADE TO THE CONTRACTOR FOR UTILITY WORK SHOWN ON THIS SHEET.



### GRAPHIC SCALES



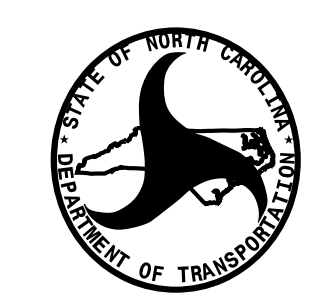
SHEET NO.:  
UO-1  
UO-2 THRU UO-3

### INDEX OF SHEETS

DESCRIPTION
TITLE SHEET
UTILITY BY OTHERS SHEETS

### UTILITY OWNERS WITH CONFLICTS

- (A) DUKE ENERGY - DISTRIBUTION
- (B) DUKE ENERGY - NATURAL GAS DISTRIBUTION
- (C) SEGRA COMMUNICATION - CABLE TV
- (D) CITY OF WINSTON SALEM - STREET LIGHTING & TRAFFIC SIGNAL FIBER OPTIC
- (E) VERIZON COMMUNICATION - FIBER OPTIC
- (D) NCDOT ITS - FIBER OPTIC & TRAFFIC CAMERA

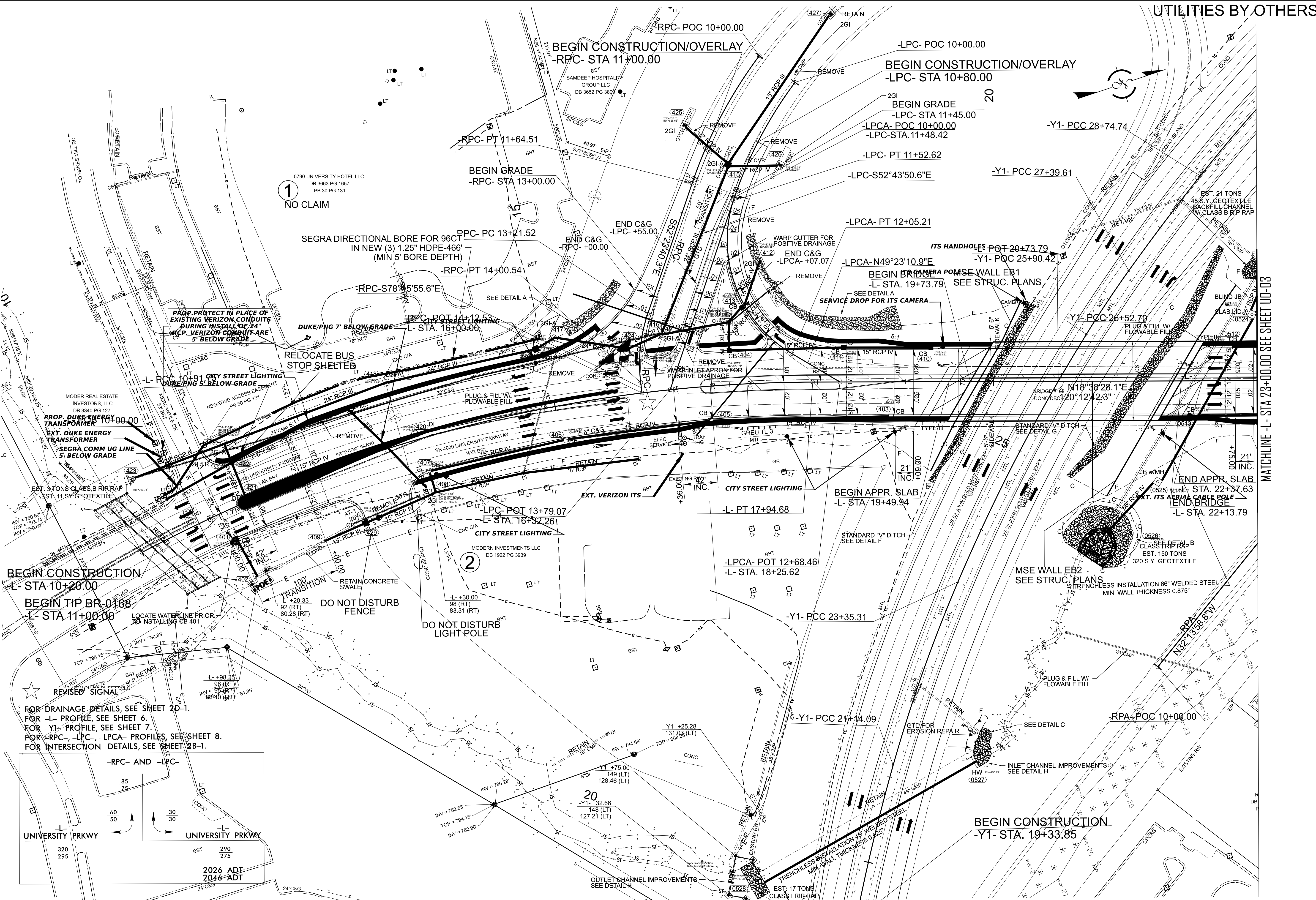


DIVISION OF HIGHWAYS  
UTILITIES UNIT  
1555 MAIL SERVICES CENTER  
RALEIGH NC 27699-1555  
PHONE (919) 707-7194

ALI KOUCHEKI UTILITIES REGIONAL ENGINEER  
DOUG JOYNER UTILITIES ENGINEER  
DAYTON MARTIN UTILITIES AREA COORDINATOR  
MARK COLE UTILITIES COORDINATOR

ALL PROPOSED UTILITY WORK SHOWN ON THIS SHEET WILL BE DONE BY OTHERS. NO PAYMENT WILL BE MADE TO THE CONTRACTOR FOR UTILITY WORK SHOWN ON THIS SHEET.

UTILITIES BY OTHERS



1 NO CLAIM

BEGIN GRADE  
-RPC- STA 13+00.00

BEGIN CONSTRUCTION/OVERLAY  
-LPC- STA 10+80.00

-Y1- PCC 28+74.74

SEGRA DIRECTIONAL BORE FOR 96CT  
IN NEW (3) 1.25" HDPE-466'  
(MIN 5' BORE DEPTH)

END C&G  
-RPC- +00.00

-LPC- PT 11+52.62

-Y1- PCC 27+39.61

PROTECT IN PLACE OF  
EXISTING VERIZON CONDUITS  
DURING INSTALL OF 24"  
RPC- VERIZON CONDUITS ARE  
5' BELOW GRADE

DUKE/PNG 7' BELOW GRADE

-RPC- PT 14+00.54

-LPC- PT 12+05.21

-Y1- PCC 25+90.42

BEGIN BRIDGE  
-L- STA. 19+73.79  
SEE STRUC. PLANS

RELOCATE BUS STOP SHELTER

DUKE/PNG 5' BELOW GRADE

-RPC- PT 14+00.54

-LPC- PT 12+05.21

-Y1- PCC 26+52.70

BEGIN BRIDGE  
-L- STA. 19+73.79  
SEE STRUC. PLANS

PROP. DUKE ENERGY  
TRANSFORMER  
EXT. DUKE ENERGY  
TRANSFORMER  
SEGRA COMM UG LINE  
5' BELOW GRADE

RELOCATE BUS STOP SHELTER

DUKE/PNG 5' BELOW GRADE

-RPC- PT 14+00.54

-LPC- PT 12+05.21

-Y1- PCC 26+52.70

BEGIN BRIDGE  
-L- STA. 19+73.79  
SEE STRUC. PLANS

BEGIN CONSTRUCTION  
-L- STA 10+20.00

BEGIN TIP BR-0168  
-L- STA 11+00.00

LOCATE WATER LINE PRIOR  
TO INSTALLING CB 401

-RPC- PT 14+00.54

-LPC- PT 12+05.21

-Y1- PCC 26+52.70

BEGIN BRIDGE  
-L- STA. 19+73.79  
SEE STRUC. PLANS

BEGIN CONSTRUCTION  
-L- STA 10+20.00

BEGIN TIP BR-0168  
-L- STA 11+00.00

LOCATE WATER LINE PRIOR  
TO INSTALLING CB 401

-RPC- PT 14+00.54

-LPC- PT 12+05.21

-Y1- PCC 26+52.70

BEGIN BRIDGE  
-L- STA. 19+73.79  
SEE STRUC. PLANS

BEGIN CONSTRUCTION  
-L- STA 10+20.00

BEGIN TIP BR-0168  
-L- STA 11+00.00

LOCATE WATER LINE PRIOR  
TO INSTALLING CB 401

-RPC- PT 14+00.54

-LPC- PT 12+05.21

-Y1- PCC 26+52.70

BEGIN BRIDGE  
-L- STA. 19+73.79  
SEE STRUC. PLANS

BEGIN CONSTRUCTION  
-L- STA 10+20.00

BEGIN TIP BR-0168  
-L- STA 11+00.00

LOCATE WATER LINE PRIOR  
TO INSTALLING CB 401

-RPC- PT 14+00.54

-LPC- PT 12+05.21

-Y1- PCC 26+52.70

BEGIN BRIDGE  
-L- STA. 19+73.79  
SEE STRUC. PLANS

BEGIN CONSTRUCTION  
-L- STA 10+20.00

BEGIN TIP BR-0168  
-L- STA 11+00.00

LOCATE WATER LINE PRIOR  
TO INSTALLING CB 401

-RPC- PT 14+00.54

-LPC- PT 12+05.21

-Y1- PCC 26+52.70

BEGIN BRIDGE  
-L- STA. 19+73.79  
SEE STRUC. PLANS

BEGIN CONSTRUCTION  
-L- STA 10+20.00

BEGIN TIP BR-0168  
-L- STA 11+00.00

LOCATE WATER LINE PRIOR  
TO INSTALLING CB 401

-RPC- PT 14+00.54

-LPC- PT 12+05.21

-Y1- PCC 26+52.70

BEGIN BRIDGE  
-L- STA. 19+73.79  
SEE STRUC. PLANS

BEGIN CONSTRUCTION  
-L- STA 10+20.00

BEGIN TIP BR-0168  
-L- STA 11+00.00

LOCATE WATER LINE PRIOR  
TO INSTALLING CB 401

-RPC- PT 14+00.54

-LPC- PT 12+05.21

-Y1- PCC 26+52.70

BEGIN BRIDGE  
-L- STA. 19+73.79  
SEE STRUC. PLANS

BEGIN CONSTRUCTION  
-L- STA 10+20.00

BEGIN TIP BR-0168  
-L- STA 11+00.00

LOCATE WATER LINE PRIOR  
TO INSTALLING CB 401

-RPC- PT 14+00.54

-LPC- PT 12+05.21

-Y1- PCC 26+52.70

BEGIN BRIDGE  
-L- STA. 19+73.79  
SEE STRUC. PLANS

BEGIN CONSTRUCTION  
-L- STA 10+20.00

BEGIN TIP BR-0168  
-L- STA 11+00.00

LOCATE WATER LINE PRIOR  
TO INSTALLING CB 401

-RPC- PT 14+00.54

-LPC- PT 12+05.21

-Y1- PCC 26+52.70

BEGIN BRIDGE  
-L- STA. 19+73.79  
SEE STRUC. PLANS

BEGIN CONSTRUCTION  
-L- STA 10+20.00

BEGIN TIP BR-0168  
-L- STA 11+00.00

LOCATE WATER LINE PRIOR  
TO INSTALLING CB 401

-RPC- PT 14+00.54

-LPC- PT 12+05.21

-Y1- PCC 26+52.70

BEGIN BRIDGE  
-L- STA. 19+73.79  
SEE STRUC. PLANS

BEGIN CONSTRUCTION  
-L- STA 10+20.00

BEGIN TIP BR-0168  
-L- STA 11+00.00

LOCATE WATER LINE PRIOR  
TO INSTALLING CB 401

-RPC- PT 14+00.54

-LPC- PT 12+05.21

-Y1- PCC 26+52.70

BEGIN BRIDGE  
-L- STA. 19+73.79  
SEE STRUC. PLANS

BEGIN CONSTRUCTION  
-L- STA 10+20.00

BEGIN TIP BR-0168  
-L- STA 11+00.00

LOCATE WATER LINE PRIOR  
TO INSTALLING CB 401

-RPC- PT 14+00.54

-LPC- PT 12+05.21

-Y1- PCC 26+52.70

BEGIN BRIDGE  
-L- STA. 19+73.79  
SEE STRUC. PLANS

BEGIN CONSTRUCTION  
-L- STA 10+20.00

BEGIN TIP BR-0168  
-L- STA 11+00.00

LOCATE WATER LINE PRIOR  
TO INSTALLING CB 401

-RPC- PT 14+00.54

-LPC- PT 12+05.21

-Y1- PCC 26+52.70

BEGIN BRIDGE  
-L- STA. 19+73.79  
SEE STRUC. PLANS

BEGIN CONSTRUCTION  
-L- STA 10+20.00

BEGIN TIP BR-0168  
-L- STA 11+00.00

LOCATE WATER LINE PRIOR  
TO INSTALLING CB 401

-RPC- PT 14+00.54

-LPC- PT 12+05.21

-Y1- PCC 26+52.70

BEGIN BRIDGE  
-L- STA. 19+73.79  
SEE STRUC. PLANS

BEGIN CONSTRUCTION  
-L- STA 10+20.00

BEGIN TIP BR-0168  
-L- STA 11+00.00

LOCATE WATER LINE PRIOR  
TO INSTALLING CB 401

-RPC- PT 14+00.54

-LPC- PT 12+05.21

-Y1- PCC 26+52.70

BEGIN BRIDGE  
-L- STA. 19+73.79  
SEE STRUC. PLANS

BEGIN CONSTRUCTION  
-L- STA 10+20.00

BEGIN TIP BR-0168  
-L- STA 11+00.00

LOCATE WATER LINE PRIOR  
TO INSTALLING CB 401

-RPC- PT 14+00.54

-LPC- PT 12+05.21

-Y1- PCC 26+52.70

BEGIN BRIDGE  
-L- STA. 19+73.79  
SEE STRUC. PLANS

BEGIN CONSTRUCTION  
-L- STA 10+20.00

BEGIN TIP BR-0168  
-L- STA 11+00.00

LOCATE WATER LINE PRIOR  
TO INSTALLING CB 401

-RPC- PT 14+00.54

-LPC- PT 12+05.21

-Y1- PCC 26+52.70

BEGIN BRIDGE  
-L- STA. 19+73.79  
SEE STRUC. PLANS

BEGIN CONSTRUCTION  
-L- STA 10+20.00

BEGIN TIP BR-0168  
-L- STA 11+00.00

LOCATE WATER LINE PRIOR  
TO INSTALLING CB 401

-RPC- PT 14+00.54

-LPC- PT 12+05.21

-Y1- PCC 26+52.70

BEGIN BRIDGE  
-L- STA. 19+73.79  
SEE STRUC. PLANS

BEGIN CONSTRUCTION  
-L- STA 10+20.00

BEGIN TIP BR-0168  
-L- STA 11+00.00

LOCATE WATER LINE PRIOR  
TO INSTALLING CB 401

-RPC- PT 14+00.54

-LPC- PT 12+05.21

-Y1- PCC 26+52.70

BEGIN BRIDGE  
-L- STA. 19+73.79  
SEE STRUC. PLANS

BEGIN CONSTRUCTION  
-L- STA 10+20.00

BEGIN TIP BR-0168  
-L- STA 11+00.00

LOCATE WATER LINE PRIOR  
TO INSTALLING CB 401

-RPC- PT 14+00.54

-LPC- PT 12+05.21

-Y1- PCC 26+52.70

BEGIN BRIDGE  
-L- STA. 19+73.79  
SEE STRUC. PLANS

BEGIN CONSTRUCTION  
-L- STA 10+20.00

BEGIN TIP BR-0168  
-L- STA 11+00.00

LOCATE WATER LINE PRIOR  
TO INSTALLING CB 401

-RPC- PT 14+00.54

-LPC- PT 12+05.21

-Y1- PCC 26+52.70

BEGIN BRIDGE  
-L- STA. 19+73.79  
SEE STRUC. PLANS

BEGIN CONSTRUCTION  
-L- STA 10+20.00

BEGIN TIP BR-0168  
-L- STA 11+00.00

LOCATE WATER LINE PRIOR  
TO INSTALLING CB 401

-RPC- PT 14+00.54

-LPC- PT 12+05.21

-Y1- PCC 26+52.70

BEGIN BRIDGE  
-L- STA. 19+73.79  
SEE STRUC. PLANS

BEGIN CONSTRUCTION  
-L- STA 10+20.00

BEGIN TIP BR-0168  
-L- STA 11+00.00

LOCATE WATER LINE PRIOR  
TO INSTALLING CB 401

-RPC- PT 14+00.54

-LPC- PT 12+05.21

-Y1- PCC 26+52.70

BEGIN BRIDGE  
-L- STA. 19+73.79  
SEE STRUC. PLANS

BEGIN CONSTRUCTION  
-L- STA 10+20.00

BEGIN TIP BR-0168  
-L- STA 11+00.00

LOCATE WATER LINE PRIOR  
TO INSTALLING CB 401

-RPC- PT 14+00.54

-LPC- PT 12+05.21

-Y1- PCC 26+52.70

BEGIN BRIDGE  
-L- STA. 19+73.79  
SEE STRUC. PLANS

BEGIN CONSTRUCTION  
-L- STA 10+20.00

BEGIN TIP BR-0168  
-L- STA 11+00.00

LOCATE WATER LINE PRIOR  
TO INSTALLING CB 401

-RPC- PT 14+00.54

-LPC- PT 12+05.21

-Y1- PCC 26+52.70

BEGIN BRIDGE  
-L- STA. 19+73.79  
SEE STRUC. PLANS

BEGIN CONSTRUCTION  
-L- STA 10+20.00

BEGIN TIP BR-0168  
-L- STA 11+00.00

LOCATE WATER LINE PRIOR  
TO INSTALLING CB 401

-RPC- PT 14+00.54

-LPC- PT 12+05.21

-Y1- PCC 26+52.70

BEGIN BRIDGE  
-L- STA. 19+73.79  
SEE STRUC. PLANS

BEGIN CONSTRUCTION  
-L- STA 10+20.00

BEGIN TIP BR-0168  
-L- STA 11+00.00

LOCATE WATER LINE PRIOR  
TO INSTALLING CB 401

-RPC- PT 14+00.54

-LPC- PT 12+05.21

-Y1- PCC 26+52.70

BEGIN BRIDGE  
-L- STA. 19+73.79  
SEE STRUC. PLANS

BEGIN CONSTRUCTION  
-L- STA 10+20.00

BEGIN TIP BR-0168  
-L- STA 11+00.00

LOCATE WATER LINE PRIOR  
TO INSTALLING CB 401

-RPC- PT 14+00.54

-LPC- PT 12+05.21

-Y1- PCC 26+52.70

BEGIN BRIDGE  
-L- STA. 19+73.79  
SEE STRUC. PLANS

BEGIN CONSTRUCTION  
-L- STA 10+20.00

BEGIN TIP BR-0168  
-L- STA 11+00.00

LOCATE WATER LINE PRIOR  
TO INSTALLING CB 401

-RPC- PT 14+00.54

-LPC- PT 12+05.21

-Y1- PCC 26+52.70

BEGIN BRIDGE  
-L- STA. 19+73.79  
SEE STRUC. PLANS

BEGIN CONSTRUCTION  
-L- STA 10+20.00

