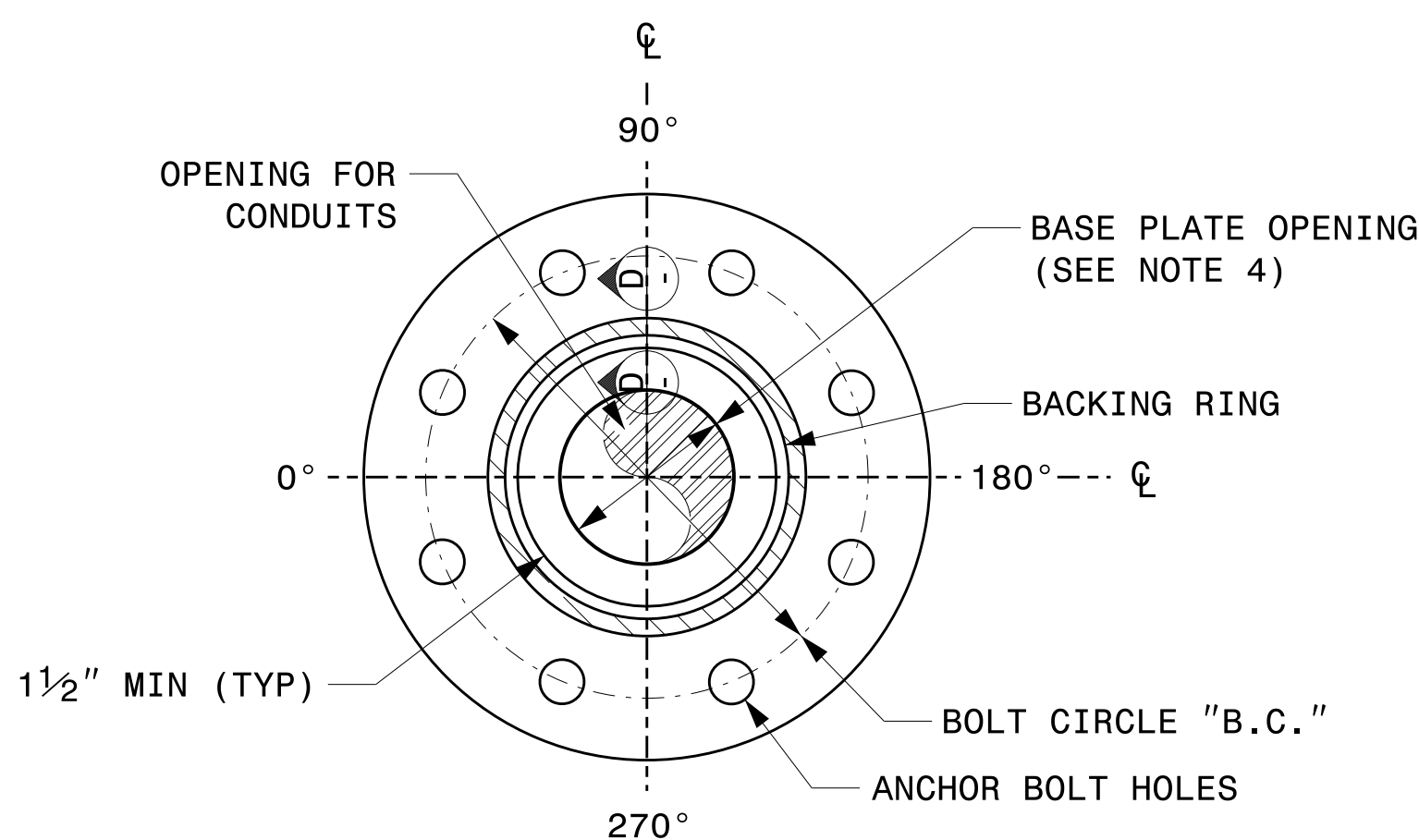
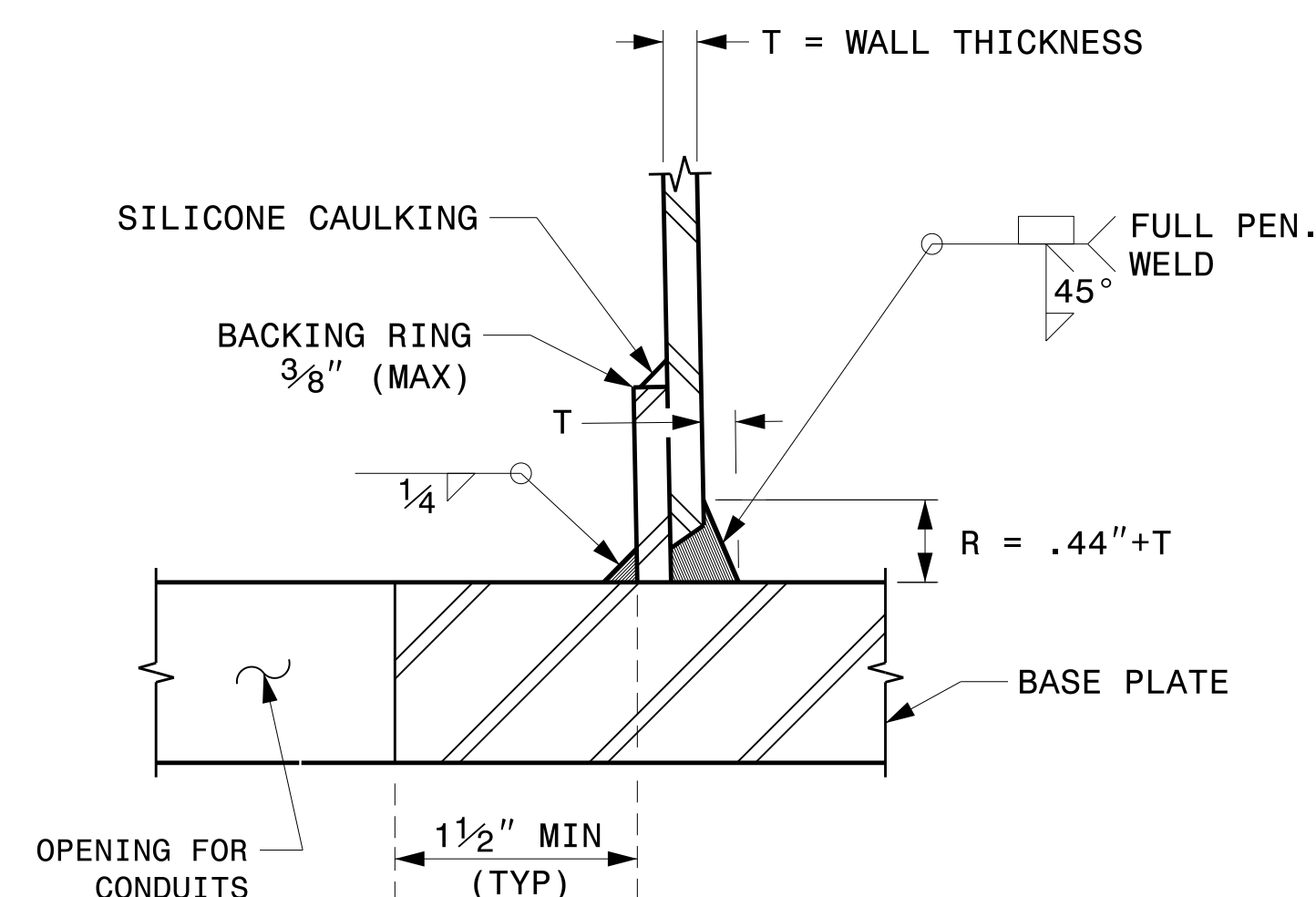


4 BOLT PATTERN FOR POLES UP TO 40'

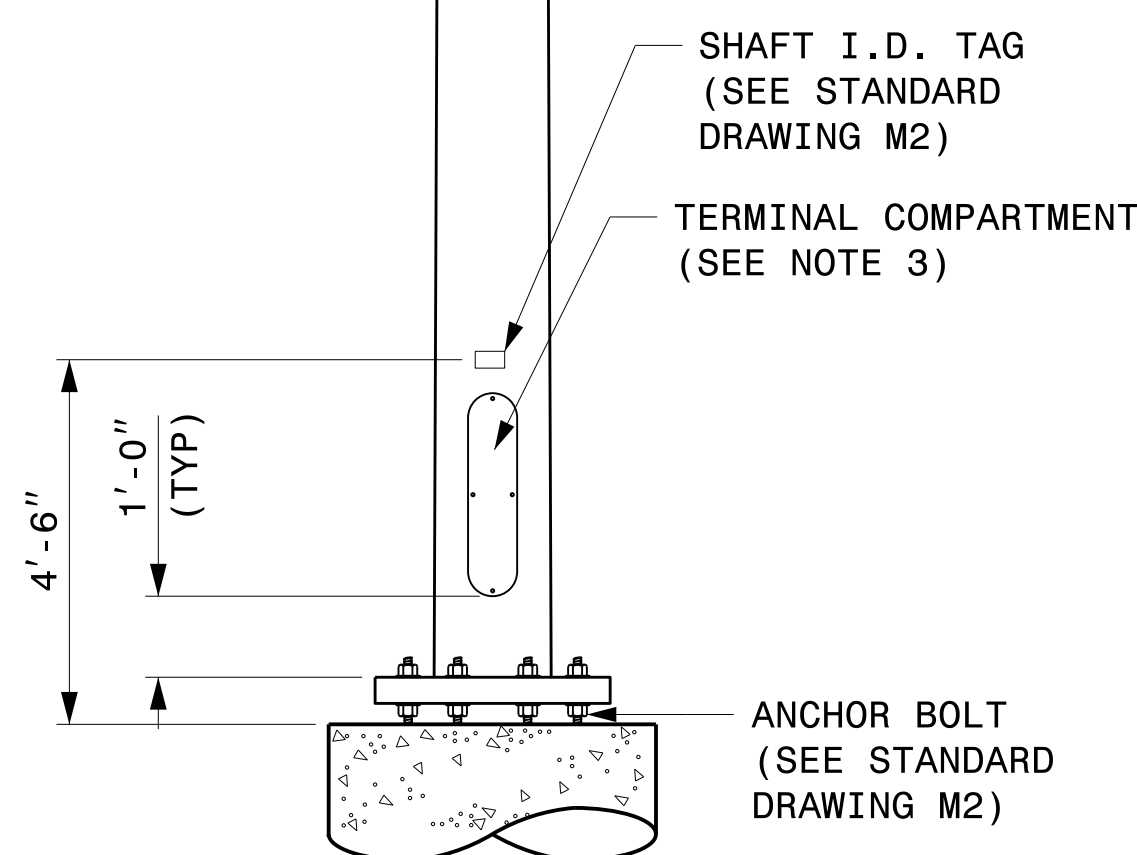


8 BOLT PATTERN FOR POLES TALLER THAN 40'

BASE PLATE DETAILS



SECTION D-D
(POLE ATTACHMENT TO BASE PLATE)
FULL - PENETRATION GROOVE WELD DETAIL



CCTV CAMERA POLE
(NOT TO SCALE)

NOTES:

1. THIS DRAWING PROVIDES BASIC DETAILS FOR CCTV POLES. PROJECT REQUIREMENTS MAY REQUIRE SPECIAL FACTORY PREPS THAT ARE NOT SHOWN ON THESE DETAILS.
2. DETAILS FOR INTERNAL CAMERA LOWERING SYSTEMS ARE NOT SHOWN.
3. POLE MOUNTED CABINETS MAY REQUIRE MODIFICATIONS TO THE LOWER HANDHOLE OPENING TO MOUNT CABINETS. 4" X 8" REINFORCED HANDHOLES ARE ACCEPTABLE OPTIONS, AND MAY BE PREFERRED.
4. OPENING IN POLE BASE SHALL BE EQUAL TO POLE BASE INSIDE DIAMETER MINUS 3 1/2" BUT SHALL NOT BE LESS THAN 8 1/2".
5. USE COMPACT SECTION CRITERIA D/T RATIO PER AASHTO LTS-LRFD 1ST EDITION SECTION 5.7.2.

02-dct-2023-10-15
S:\ISSUES\415 Signal\Signal Design\Structures\Drawings\2024 Merit Pole Std Drawings for LRF02024 Sig.M9 Fabrication Details - CCTV Poles.dgn
Kedar Tigon

Prepared in the Offices of:

750 N. Greenfield Pkwy, Garner, NC 27529

Typical Fabrication Details For CCTV Poles	
PLAN DATE: SEPTEMBER 2023	DESIGNED BY: K.C. DURIGON
PREPARED BY: K.C. DURIGON	REVIEWED BY: C.F. ANDREWS
REVISIONS	INIT. DATE

SEAL

DocuSigned by:
Kevin Durigon
4B23DC79B3784DA

09/23/2023
DATE

Fabrication Details – CCTV Camera Poles

- 1 INSTALL COAX CABLE
- 2 INSTALL ETHERNET CABLE
- 3 REMOVE EXISTING ETHERNET CABLE
- 4 INSTALL SMFO CABLE
- 5 EXISTING SMFO CABLE
- 6 INSTALL FIBER OPTIC DROP CABLE
- 7 INSTALL TRACER WIRE
- 8 TRENCH
- 9 INSTALL PVC CONDUIT
- 10 INSTALL RIGID, GALVANIZED STEEL CONDUIT
- 11 INSTALL RIGID, GALVANIZED STEEL RISER WITH WEATHERHEAD
- 12 INSTALL RIGID, GALVANIZED STEEL RISER WITH FIBER OPTIC CABLE SEAL
- 13 INSTALL OUTER-DUCT POLYETHYLENE CONDUIT
- 14 INSTALL POLYETHYLENE CONDUIT
- 15 DIRECTIONAL DRILL CONDUIT
- 16 BORE AND JACK CONDUIT
- 17 INSTALL CABLE(S) IN EXISTING CONDUIT
- 18 INSTALL CABLE(S) IN NEW CONDUIT
- 19 INSTALL CABLE(S) IN EXISTING RISER
- 20 INSTALL CABLE(S) IN NEW RISER
- 21 INSTALL CABLE(S) IN EXISTING CONDUIT STUB-OUTS
- 22 INSTALL NEW CONDUIT INTO EXISTING CABINET BASE (USE EXISTING CONDUIT STUB-OUTS WHEN AVAILABLE)
- 23 INSTALL NEW RISER INTO EXISTING CABINET BASE (USE EXISTING CONDUIT STUB-OUTS WHEN AVAILABLE)
- 24 INSTALL NEW CONDUIT INTO EXISTING POLE MOUNTED CABINET
- 25 INSTALL NEW RISER INTO EXISTING POLE MOUNTED CABINET
- 26 INSTALL NEW ETHERNET EDGE SWITCH
- 27 INSTALL NEW FIBER OPTIC TRANSCEIVER
- 28 INSTALL INTERCONNECT CENTER, PATCH PANEL, JUMPERS AND FUSION SPLICE CABLE IN CABINET
- 29 INSTALL UNDERGROUND SPLICE ENCLOSURE
- 30 INSTALL AERIAL SPLICE ENCLOSURE
- 31 MODIFY EXISTING INTERCONNECT CENTER / SPLICE ENCLOSURE
- 32 INSTALL POLE MOUNTED SPLICE CABINET
- 33 INSTALL BASE MOUNTED SPLICE CABINET

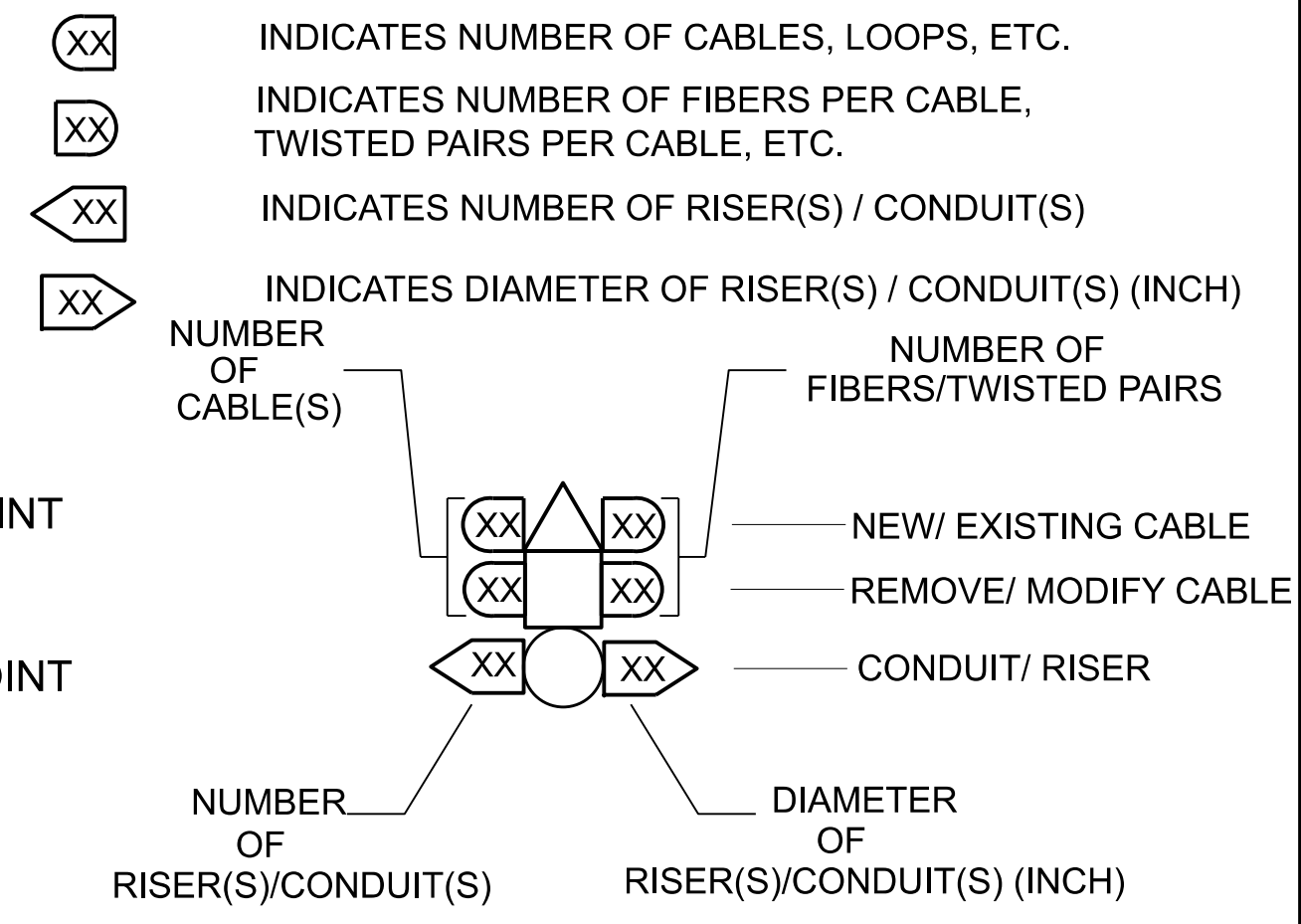
- 34 INSTALL CABINET FOUNDATION
- 35 INSTALL CCTV CAMERA POLE MOUNTED CABINET
- 36 INSTALL CCTV CAMERA ASSEMBLY
- 37 INSTALL CCTV CAMERA WOOD POLE
- 38 INSTALL CCTV CAMERA METAL POLE AND FOUNDATION
- 39 INSTALL JUNCTION BOX
- 40A INSTALL OVERSIZED JUNCTION BOX
- 40B INSTALL SPECIAL OVERSIZED JUNCTION BOX (36" x 24" x 24")
- 41 REMOVE EXISTING JUNCTION BOX
- 42 INSTALL WOOD POLE
- 43 REMOVE EXISTING WOOD POLE
- 44 INSTALL AERIAL GUY ASSEMBLY
- 45 INSTALL STANDARD GUY ASSEMBLY
- 46 INSTALL SIDEWALK GUY ASSEMBLY
- 47 INSTALL MESSENGER CABLE
- 48A REMOVE EXISTING COMMUNICATIONS AND MESSENGER CABLE
- 48B REMOVE EXISTING COMMUNICATIONS CABLE
- 49 BACK PULL EXISTING COMMUNICATIONS CABLE
- 50 INSTALL CELL MODEM AND ANTENNA
- 51 INSTALL CABLE STORAGE RACKS (SNOW SHOES) AND STORE 100 FEET OF CABLE
- 52A INSTALL DELINEATOR MARKER
- 52B INSTALL JUNCTION BOX MARKER
- 53A STORE 20 FEET OF COMMUNICATIONS CABLE
- 53B STORE 50 FEET OF EACH COMMUNICATIONS CABLE
- 54 LASH CABLE(S) TO EXISTING COMMUNICATIONS CABLE
- 55 LASH CABLE(S) TO EXISTING MESSENGER CABLE
- 56 LASH CABLE(S) TO NEW MESSENGER CABLE
- 57 MODIFY EXISTING ELECTRICAL SERVICE
- 58 INSTALL NEW ELECTRICAL SERVICE
- 59 INSTALL NEW EQUIPMENT CABINET DISCONNECT
- 60 BOND TRACER WIRE TO EQUIPMENT GROUND BUS
DO NOT BOND TRACER WIRE TO EQUIPMENT GROUND BUS
BOND RISER AND MESSENGER CABLE TO POLE GROUND
- 61
- 62 BOND RISER TO POLE GROUND
- 63
- 64 BOND MESSENGER CABLE TO POLE GROUND
- 65 INSTALL HEAT SHRINK TUBING RETROFIT KIT
- 66 INSTALL MOLDABLE DUCT SEAL
- 67 SLACK SPAN

LEGEND

	FO	NEW FIBER OPTIC COMMUNICATIONS CABLE
	EXI	EXISTING COMMUNICATIONS CABLE
	REM	EXISTING COMMUNICATIONS CABLE TO BE REMOVED
		NEW AERIAL GUY ASSEMBLY
		NEW CONDUIT
		EXISTING CONDUIT
	DD	NEW DIRECTIONAL DRILLED CONDUIT

NEW		EXISTING
	OVERSIZED JUNCTION BOX	
	WOOD POLE	
	AERIAL SPLICE ENCLOSURE	
	UNDERGROUND SPLICE ENCLOSURE	
	METAL POLE	
	CCTV ASSEMBLY	
	STANDARD GUY ASSEMBLY	
	SIDEWALK GUY ASSEMBLY	
	CABLE STORAGE RACKS (SNOW SHOES)	
	SIGNAL/EQUIPMENT CABINET	
	SPLICE CABINET	
	FLAT PANEL ANTENNA (SINGLE)	
	YAGI ANTENNA (DOUBLE) FOR REPEATER OPERATION	
	YAGI ANTENNA (SINGLE)	
	OMNI ANTENNA	
	SIGNAL POLE	
	SIGNAL INVENTORY NUMBER	

CONSTRUCTION NOTE SYMBOLOGY KEY



ATTACHMENT POINT:

XX"/SS
YYY
DISTANCE ABOVE (IN)/ATTACHMENT POINT REFERENCE POINT

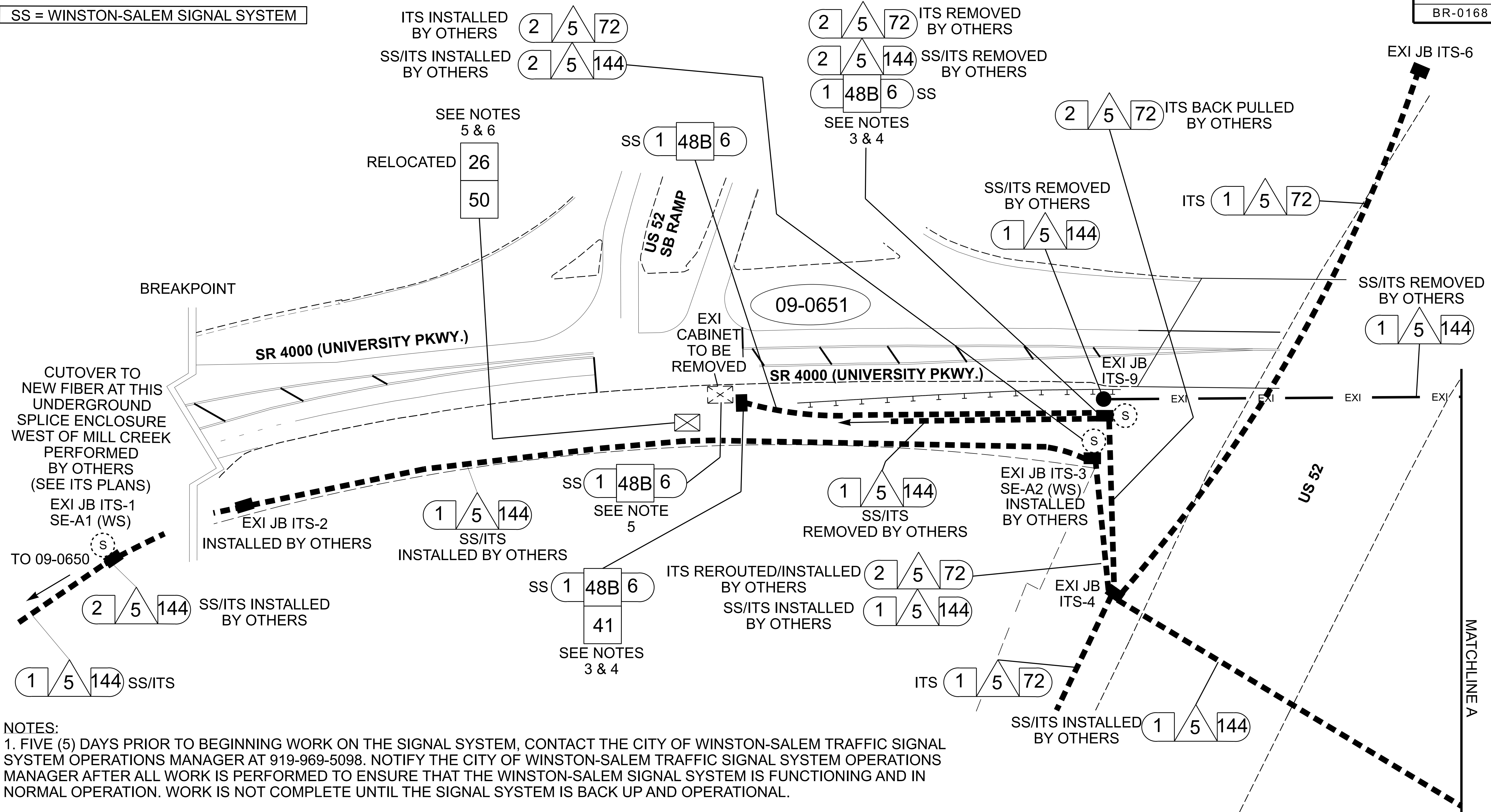
YYY
XX"/SS
REFERENCE POINT DISTANCE BELOW (IN)/ATTACHMENT POINT

"SS" REFERENCE LOCATION
FS = FRONT SIDE OF POLE
BS = BACK SIDE OF POLE

DOCUMENT NOT CONSIDERED FINAL UNLESS ALL SIGNATURES COMPLETED

	WINSTON-SALEM SIGNAL SYSTEM CONSTRUCTION NOTES		
	DIVISION 09 FORSYTH CO WINSTON-SALEM PLAN DATE: FEBRUARY 2026 REVIEWED BY:	PREPARED BY: H.T. BERGGREN, EI	
750 N. Greenfield Pkwy., Garner, NC 27529			SIGNATURE: Ryan Hough DATE: 02/06/2026

SS = WINSTON-SALEM SIGNAL SYSTEM



- NOTES:
1. FIVE (5) DAYS PRIOR TO BEGINNING WORK ON THE SIGNAL SYSTEM, CONTACT THE CITY OF WINSTON-SALEM TRAFFIC SIGNAL SYSTEM OPERATIONS MANAGER AT 919-969-5098. NOTIFY THE CITY OF WINSTON-SALEM TRAFFIC SIGNAL SYSTEM OPERATIONS MANAGER AFTER ALL WORK IS PERFORMED TO ENSURE THAT THE WINSTON-SALEM SIGNAL SYSTEM IS FUNCTIONING AND IN NORMAL OPERATION. WORK IS NOT COMPLETE UNTIL THE SIGNAL SYSTEM IS BACK UP AND OPERATIONAL.
 2. PRIOR TO REMOVAL OF ANY FIBER OPTIC CABLE CONTRACTOR TO RECORD EXISTING SPLICE ARRANGEMENT FOR COMPARISON TO THE SUPPLIED SPLICE DETAILS. IF DISCREPANCIES EXIST, CONTACT THE ENGINEER TO DETERMINE HOW TO PROCEED WITH RESPLICING. PROVIDE AS-BUILT PLANS TO THE ENGINEER IF FINAL SPLICE ARRANGEMENT DIFFERS FROM THE SUPPLIED SPLICE DETAILS.
 3. CUT THE CONDUIT 30" BELOW GRADE AND ABANDON CONDUIT IN PLACE.
 4. REMOVE EXISTING JUNCTION BOX AND BACKFILL WITH APPROVED MATERIAL.
 5. RELOCATE EXISTING ETHERNET SWITCH FROM THE EXISTING SIGNAL CABINET TO THE NEW SIGNAL CABINET.
 6. PRIOR TO CUTOVER (SHOWN ON THE BR-0168 ITS PLANS) TO THE NEW SS/ITS 144-FIBER CABLE INSTALL CELL MODEMS IN THE SIGNAL CABINETS AT SIN # 09-0651 AND AT SIN #09-0798. CONTACT THE CITY OF WINSTON-SALEM TRAFFIC SIGNAL SYSTEM OPERATIONS MANAGER AT 919-969-5098 TO REQUEST THE CELL MODEMS AND ALLOW EIGHT (8) WEEKS LEAD TIME TO ACQUIRE THE CELL MODEM BEFORE ANTICIPATED DEPLOYMENT.

WORK ON THESE SCP PLANS SHOULD COINCIDE WITH ITS PLANS

TMP PHASE 1

DOCUMENT NOT CONSIDERED FINAL UNLESS ALL SIGNATURES COMPLETED

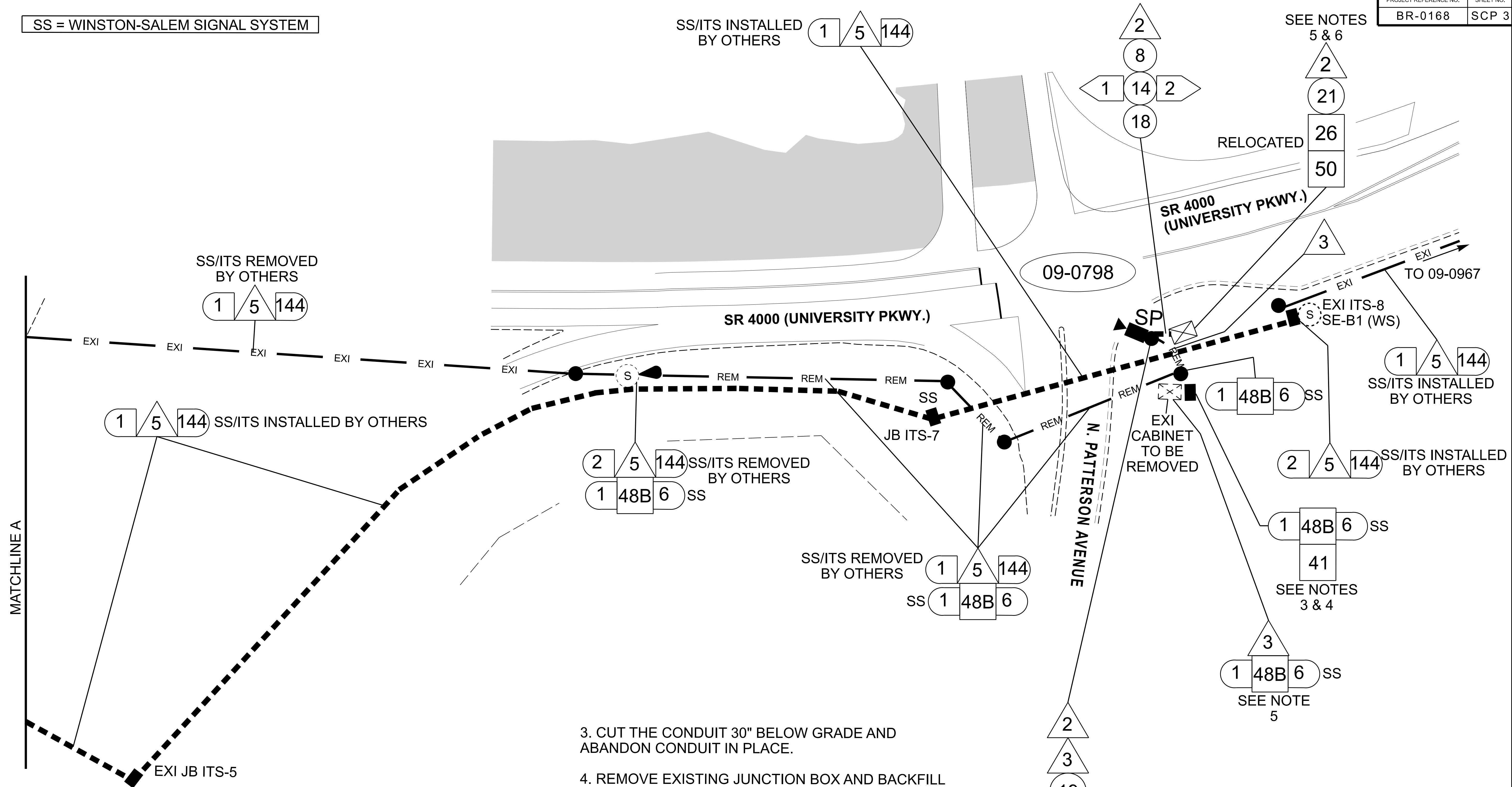
	WINSTON-SALEM SIGNAL SYSTEM COMMUNICATIONS CABLE AND CONDUIT ROUTING PLANS		
	DIVISION 09 FORSYTH CO. WINSTON-SALEM PLAN DATE: FEBRUARY 2026 PREPARED BY: HEIDI BERGGREN, E.I.	REVIEWED BY:	

750 N. Greenfield Pkwy., Garner, NC 27529

SCALE: 0 N/A

REVISIONS	INT.	DATE

SS = WINSTON-SALEM SIGNAL SYSTEM



NOTES:

1. FIVE (5) DAYS PRIOR TO BEGINNING WORK ON THE SIGNAL SYSTEM, CONTACT THE CITY OF WINSTON-SALEM TRAFFIC SIGNAL SYSTEM OPERATIONS MANAGER AT 919-969-5098. NOTIFY THE CITY OF WINSTON-SALEM TRAFFIC SIGNAL SYSTEM OPERATIONS MANAGER AFTER ALL WORK IS PERFORMED TO ENSURE THAT THE WINSTON-SALEM SIGNAL SYSTEM IS FUNCTIONING AND IN NORMAL OPERATION. WORK IS NOT COMPLETE UNTIL THE SIGNAL SYSTEM IS BACK UP AND OPERATIONAL.

2. PRIOR TO REMOVAL OF ANY FIBER OPTIC CABLE CONTRACTOR TO RECORD EXISTING SPLICE ARRANGEMENT FOR COMPARISON TO THE SUPPLIED SPLICE DETAILS. IF DISCREPANCIES EXIST, CONTACT THE ENGINEER TO DETERMINE HOW TO PROCEED WITH RESPLICING. PROVIDE AS-BUILT PLANS TO THE ENGINEER IF FINAL SPLICE ARRANGEMENT DIFFERS FROM THE SUPPLIED SPLICE DETAILS.

3. CUT THE CONDUIT 30" BELOW GRADE AND ABANDON CONDUIT IN PLACE.

4. REMOVE EXISTING JUNCTION BOX AND BACKFILL WITH APPROVED MATERIAL.

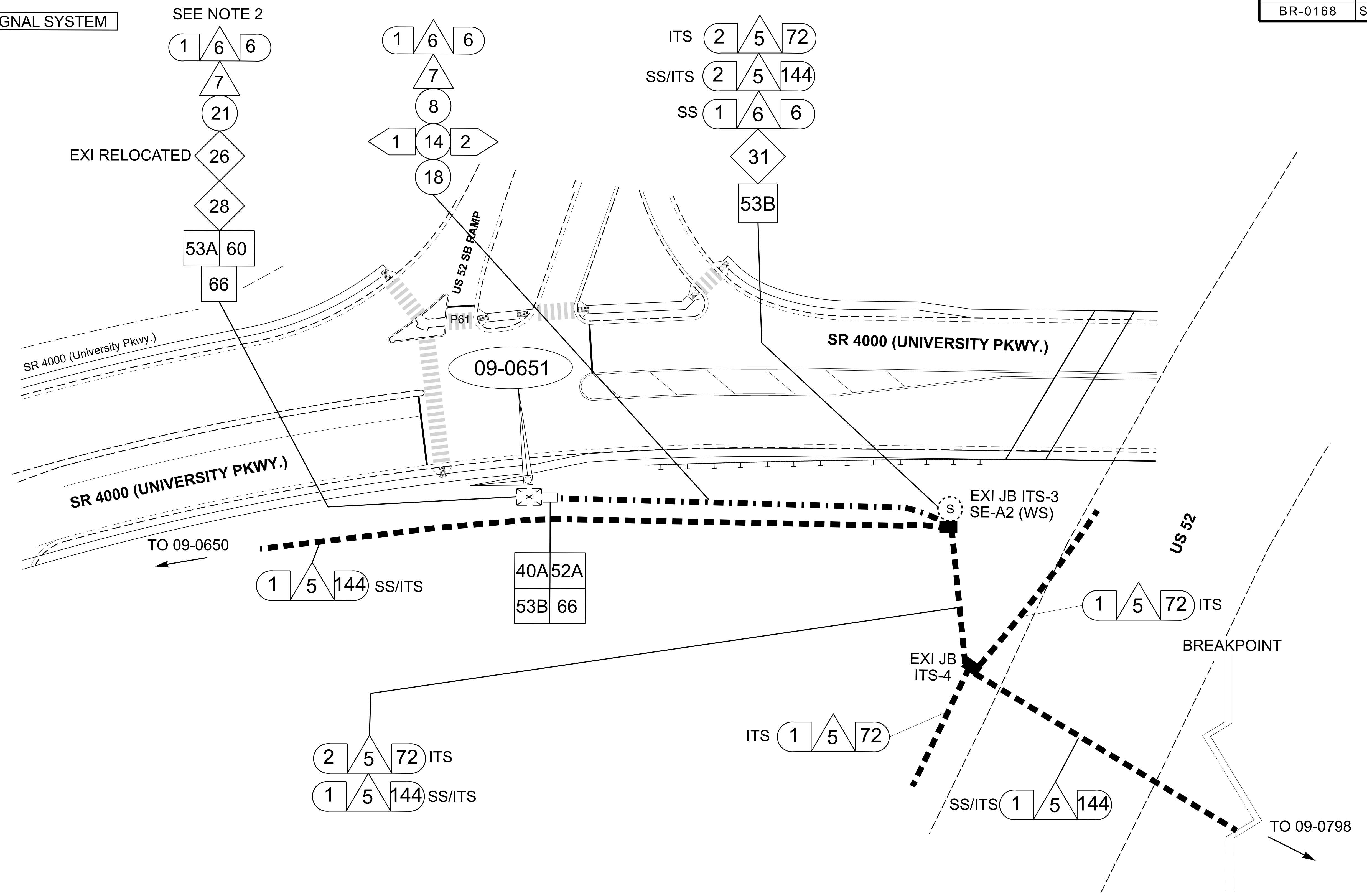
5. RELOCATE EXISTING ETHERNET SWITCH FROM THE EXISTING SIGNAL CABINET TO THE NEW SIGNAL CABINET.

6. PRIOR TO CUTOVER (SHOWN ON THE BR-0168 ITS PLANS) TO THE NEW SS/ITS 144-FIBER CABLE INSTALL CELL MODEMS IN THE SIGNAL CABINETS AT SIN # 09-0651 AND AT SIN #09-0798. CONTACT THE CITY OF WINSTON-SALEM TRAFFIC SIGNAL SYSTEM OPERATIONS MANAGER AT 919-969-5098 TO REQUEST THE CELL MODEMS AND ALLOW EIGHT (8) WEEKS LEAD TIME TO ACQUIRE THE CELL MODEM BEFORE ANTICIPATED DEPLOYMENT.

WORK ON THESE SCP PLANS SHOULD COINCIDE WITH ITS PLANS

<p>TMP PHASE 1</p> <p>Prepared in the Offices of:</p> <p>750 N. Greenfield Pkwy., Garner, NC 27529</p>		<p>DOCUMENT NOT CONSIDERED FINAL UNLESS ALL SIGNATURES COMPLETED</p>	
<p>WINSTON-SALEM SIGNAL SYSTEM COMMUNICATIONS CABLE AND CONDUIT ROUTING PLANS</p> <p>DIVISION 09 FORSYTH CO WINSTON-SALEM</p> <p>PLAN DATE: FEBRUARY 2026 REVIEWED BY:</p> <p>PREPARED BY: HEIDI BERGGREN, EI</p>			
<p>SCALE: 0 N/A</p>		<p>REVISIONS: _____ INT. DATE _____</p>	
<p>SIGNATURE: _____ DATE: 02/06/2026</p>		<p>DATE: 02/06/2026</p>	

SS = WINSTON-SALEM SIGNAL SYSTEM



WORK ON THESE SCP PLANS SHOULD COINCIDE WITH ITS PLANS

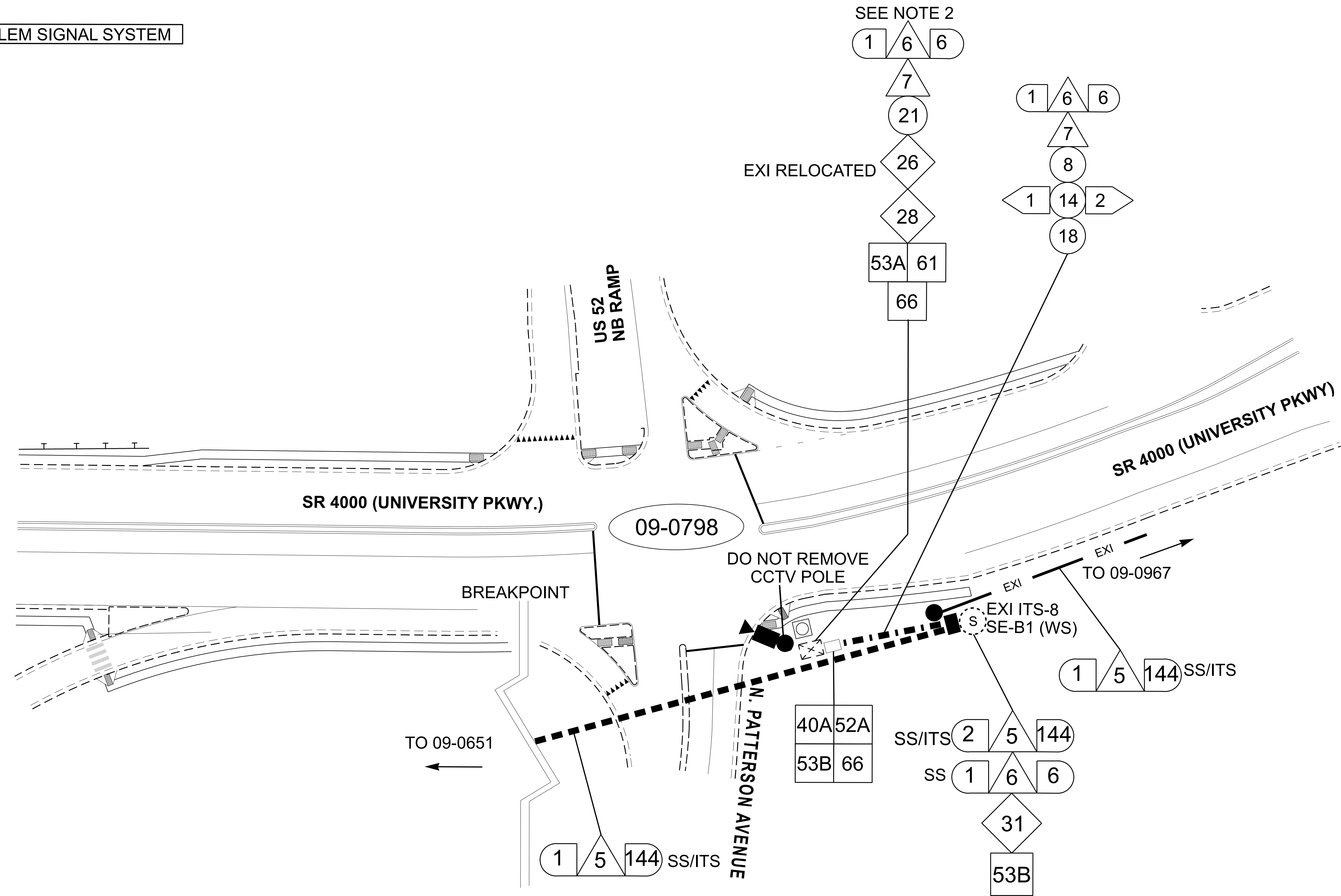
NOTES:

1. FIVE (5) DAYS PRIOR TO BEGINNING WORK ON THE SIGNAL SYSTEM, CONTACT THE CITY OF WINSTON-SALEM TRAFFIC SIGNAL SYSTEM OPERATIONS MANAGER AT 919-969-5098. NOTIFY THE CITY OF WINSTON-SALEM TRAFFIC SIGNAL SYSTEM OPERATIONS MANAGER AFTER ALL WORK IS PERFORMED TO ENSURE THAT THE WINSTON-SALEM SIGNAL SYSTEM IS FUNCTIONING AND IN NORMAL OPERATION. WORK IS NOT COMPLETE UNTIL THE SIGNAL SYSTEM IS BACK UP AND OPERATIONAL.

2. UPON INSTALLATION OF THE NEW 6-FIBER DROP CABLE IN THE SIGNAL CABINETS AT SIN # 09-0651 AND SIN # 09-0798, AND ONCE THE SIGNAL SYSTEM IS BACK UP AND IN NORMAL OPERATION, REMOVE THE CELL MODEMS AND RETURN THEM TO THE CITY OF WINSTON-SALEM TRAFFIC SIGNAL SYSTEM OPERATIONS MANAGER.

FINAL DESIGN		DOCUMENT NOT CONSIDERED FINAL UNLESS ALL SIGNATURES COMPLETED	
Prepared in the Offices of:		SEAL	
WINSTON-SALEM SIGNAL SYSTEM COMMUNICATIONS CABLE AND CONDUIT ROUTING PLANS		SEAL 036833 ENGINEER RYAN W. HOUGH	
DIVISION 09 FORSYTH CO. WINSTON-SALEM		SIGNATURE: 430320F-AA2854C3	
PLAN DATE: FEBRUARY 2026 REVIEWED BY:		DATE: 02/06/2026	
PREPARED BY: HEIDI BERGGREN, EI		REVISIONS INT. DATE	
SCALE: 0 N/A		DATE:	

SS = WINSTON-SALEM SIGNAL SYSTEM



WORK ON THESE SCP PLANS SHOULD COINCIDE WITH ITS PLANS

NOTES:

- FIVE (5) DAYS PRIOR TO BEGINNING WORK ON THE SIGNAL SYSTEM, CONTACT THE CITY OF WINSTON-SALEM TRAFFIC SIGNAL SYSTEM OPERATIONS MANAGER AT 919-969-5098. NOTIFY THE CITY OF WINSTON-SALEM TRAFFIC SIGNAL SYSTEM OPERATIONS MANAGER AFTER ALL WORK IS PERFORMED TO ENSURE THAT THE WINSTON-SALEM SIGNAL SYSTEM IS FUNCTIONING AND IN NORMAL OPERATION. WORK IS NOT COMPLETE UNTIL THE SIGNAL SYSTEM IS BACK UP AND OPERATIONAL.
- UPON INSTALLATION OF THE NEW 6-FIBER DROP CABLE IN THE SIGNAL CABINETS AT SIN # 09-0651 AND SIN # 09-0798, AND ONCE THE SIGNAL SYSTEM IS BACK UP AND IN NORMAL OPERATION, REMOVE THE CELL MODEMS AND RETURN THEM TO THE CITY OF WINSTON-SALEM TRAFFIC SIGNAL SYSTEM OPERATIONS MANAGER.

FINAL DESIGN

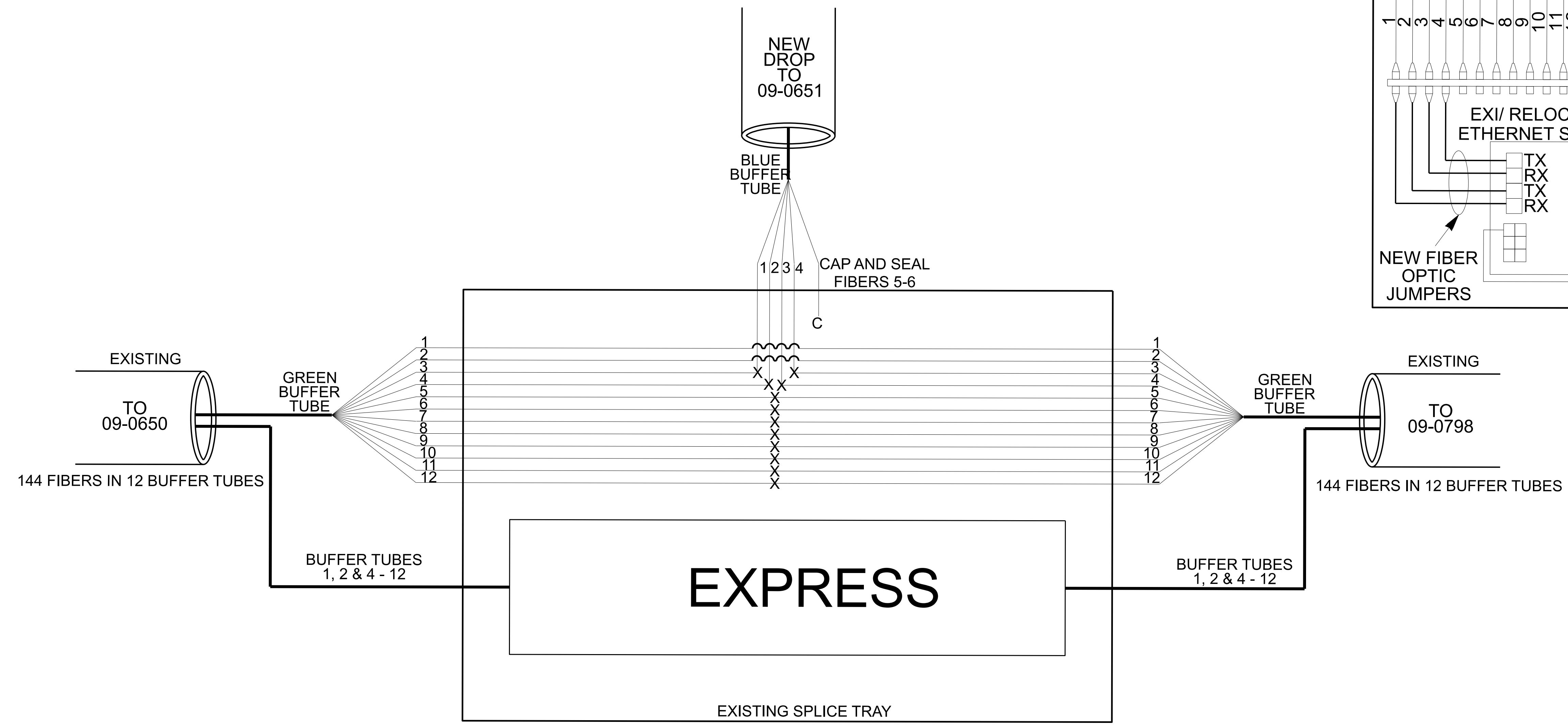
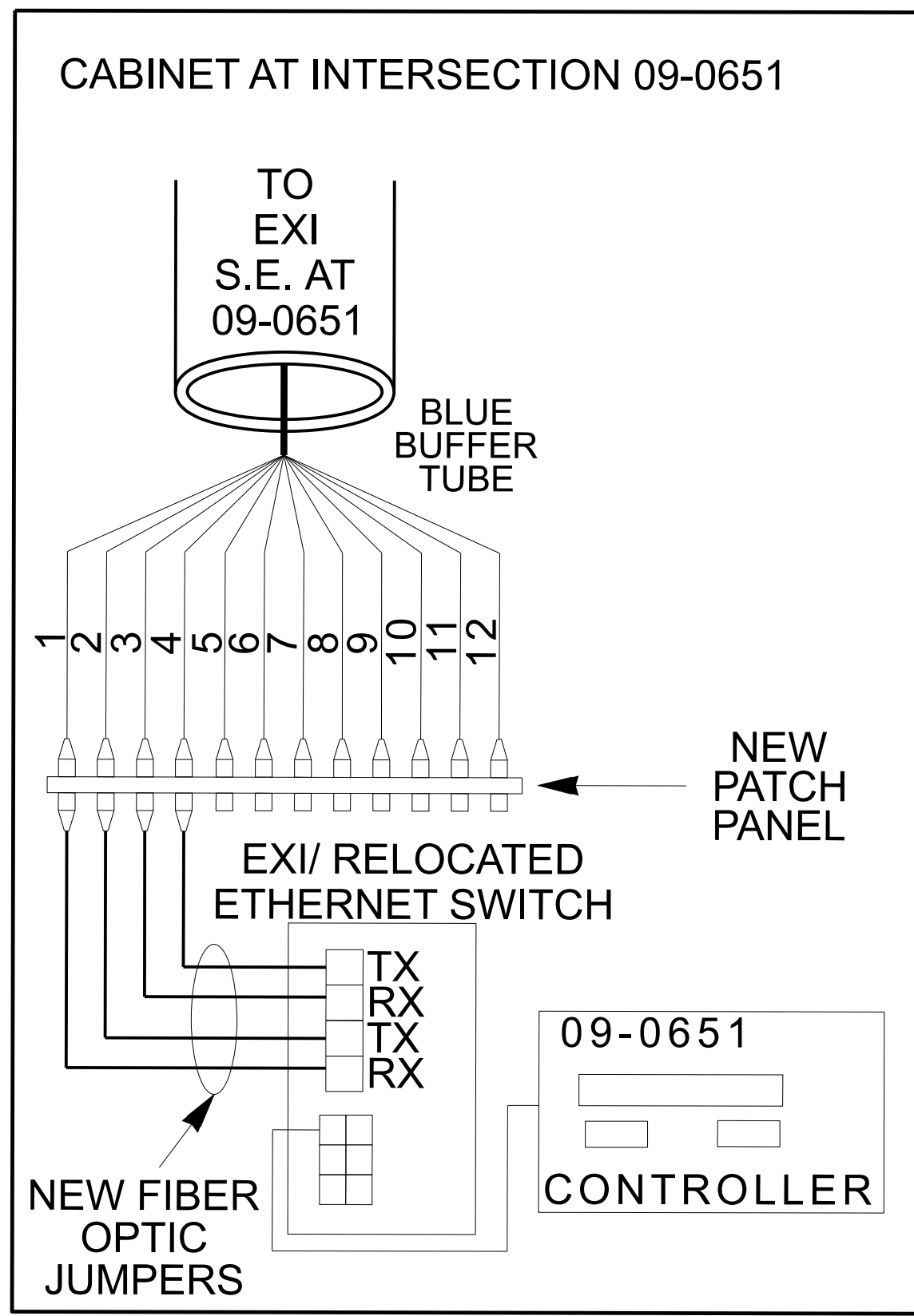
DOCUMENT NOT CONSIDERED FINAL UNLESS ALL SIGNATURES COMPLETED

	<p>WINSTON-SALEM SIGNAL SYSTEM COMMUNICATIONS CABLE AND CONDUIT ROUTING PLANS</p>		
	<p>DIVISION 09 FORSYTH CO. WINSTON-SALEM</p>	<p>PLAN DATE: FEBRUARY 2026 REVIEWED BY:</p>	
<p>750 N. Greenfield Pkwy., Garner, NC 27529</p>	<p>PREPARED BY: HEIDI BERGGREN, E.I.</p>	<p>REVISIONS</p>	<p>INIT. DATE</p>
<p>SCALE: 0 N/A</p>	<p>SIGNATURE: Ryan Hough DATE: 02/06/2026</p>		

MODIFY EXISTING UNDERGROUND SPLICE ENCLOSURE "SE-A2(WS)"
US 52 SB RAMPS AT UNIVERSITY PKWY
SIG. INV. # 09-0651

LEGEND		COLOR CODE TIA/EIA 598-A	
X	= FUSION SPLICE	(1) BLUE	(7) RED
E	= EXISTING SPLICE	(2) ORANGE	(8) BLACK
C	= CAP IN TRAY	(3) GREEN	(9) YELLOW
EXPRESS	= EXPRESS ALL FIBERS/ BUFFER TUBES	(4) BROWN	(10) VIOLET
BUFFER SPLICE	= SPLICE ALL FIBERS/ BUFFER TUBES	(5) SLATE	(11) ROSE
		(6) WHITE	(12) AQUA

Notes:
Unused fibers left coiled and stored in splice tray.
Unused Buffer Tubes left coiled and stored in splice tray.



NOTES:

- FIVE (5) DAYS PRIOR TO BEGINNING WORK ON THE SIGNAL SYSTEM, CONTACT THE CITY OF WINSTON-SALEM TRAFFIC SIGNAL SYSTEM OPERATIONS MANAGER AT 919-969-5098. NOTIFY THE CITY OF WINSTON SALEM TRAFFIC SIGNAL SYSTEM OPERATIONS MANAGER AFTER ALL WORK IS PERFORMED TO ENSURE THAT THE WINSTON-SALEM SIGNAL SYSTEM IS FUNCTIONING AND IN NORMAL OPERATION. WORK IS NOT COMPLETE UNTIL THE SIGNAL SYSTEM IS BACK UP AND OPERATIONAL.
- PRIOR TO REMOVAL OF ANY FIBER OPTIC CABLE CONTRACTOR TO RECORD EXISTING SPLICE ARRANGEMENT FOR COMPARISON TO THE SUPPLIED SPLICE DETAILS. IF DISCREPANCIES EXIST, CONTACT THE ENGINEER TO DETERMINE HOW TO PROCEED WITH RESPLICING. PROVIDE AS-BUILT PLANS TO THE ENGINEER IF FINAL SPLICE ARRANGEMENT DIFFERS FROM THE SUPPLIED SPLICE DETAILS.

- ETHERNET SWITCH TERMINATION CONFIGURATIONS ARE GENERIC. CONTRACTOR IS RESPONSIBLE FOR DETERMINING \ ENSURING PROPER TERMINATIONS.
- INCLUDE ON THE COVER OF EACH SPLICE TRAY THE FOLLOWING: REFERENCE SECTION 1731 "FIBER OPTIC SPLICE ENCLOSURE"
 - SPLICE LOCATION
 - DATE
 - COMPANY NAME
 - NAME OF INDIVIDUAL PERFORMING THE SPLICING

PRIOR TO INSTALLING THE COVER ON THE SPLICE TRAY TAKE A DIGITAL PHOTOGRAPH SHOWING THE SPLICE TRAY AND INFORMATION SHOWN ABOVE (1-4) AND SUBMIT PHOTOGRAPH ALONG WITH OTDR TEST RESULTS.

SEE ITS PLANS FOR 72-FIBER CABLE ENTERING THE SPLICE ENCLOSURE. WINSTON-SALEM SIGNAL SYSTEM SPLICES INTO THE GREEN BUFFER TUBE OF THE 144-FIBER SS/ITS CABLE.

FINAL DESIGN

DOCUMENT NOT CONSIDERED FINAL UNLESS ALL SIGNATURES COMPLETED

	WINSTON-SALEM SIGNAL SYSTEM SPLICE PLANS		
	DIVISION 09 FORSYTH CO. WINSTON-SALEM	PLAN DATE: FEBRUARY 2026	
750 N. Greenfield Pkwy., Garner, NC 27529	PREPARED BY: HEIDI BERGGREN, EI	REVISIONS	INIT. DATE

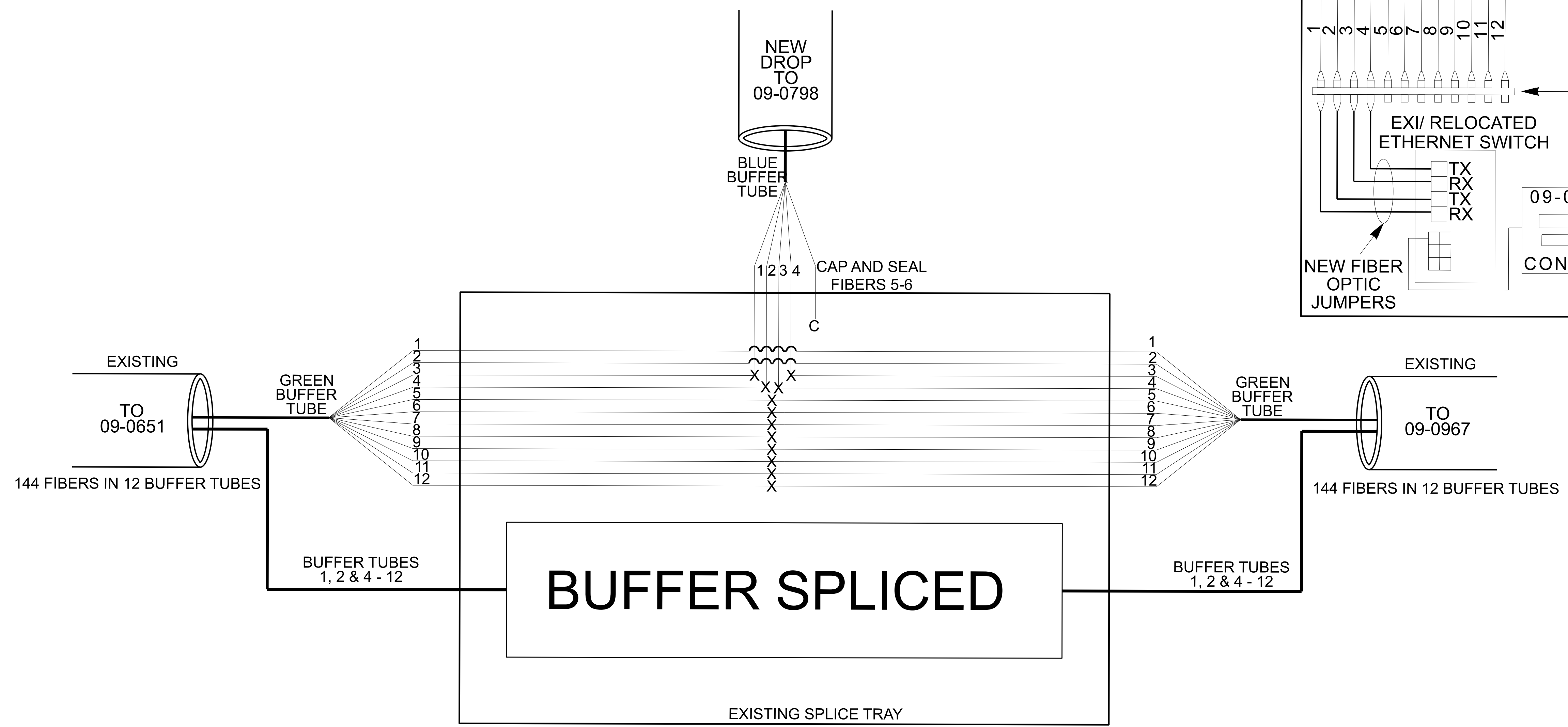
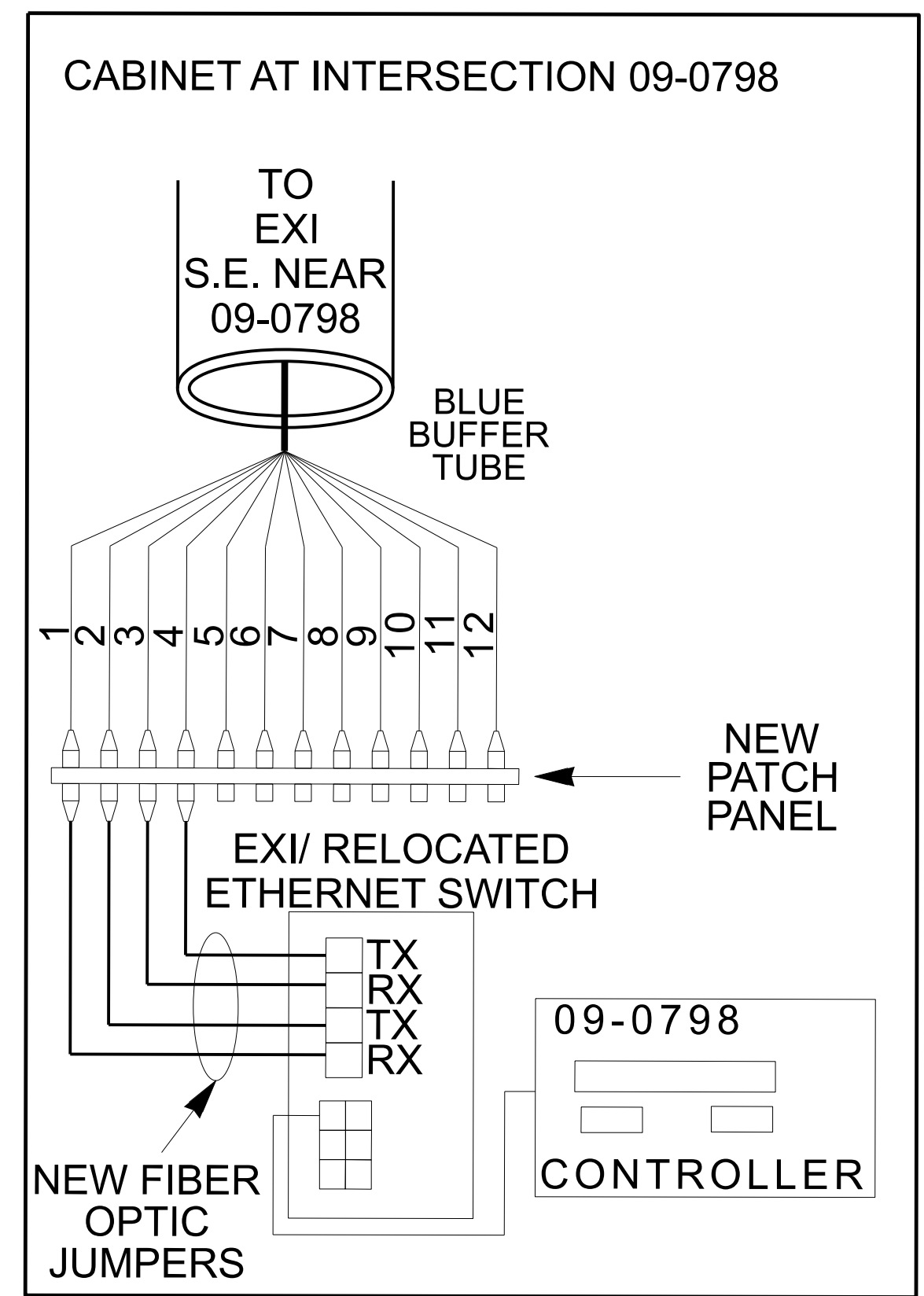
SCALE: 0 N/A

SIGNATURE: *Ryan Hough*
DATE: 02/06/2026

MODIFY EXISTING UNDERGROUND SPLICE ENCLOSURE "SE-B1(WS)"
 US 52 NB RAMPS/N. PATTERSON AVE.
 AT UNIVERSITY PKWY
 SIG. INV. # 09-0798

Notes:
 Unused fibers left coiled and stored in splice tray.
 Unused Buffer Tubes left coiled and stored in splice tray.

LEGEND		COLOR CODE TIA/EIA 598-A	
X	= FUSION SPLICE	(1) BLUE	(7) RED
E	= EXISTING SPLICE	(2) ORANGE	(8) BLACK
C	= CAP IN TRAY	(3) GREEN	(9) YELLOW
EXPRESS	= EXPRESS ALL FIBERS/ BUFFER TUBES	(4) BROWN	(10) VIOLET
BUFFER SPLICE	= SPLICE ALL FIBERS/ BUFFER TUBES	(5) SLATE	(11) ROSE
		(6) WHITE	(12) AQUA



NOTES:
 1. FIVE (5) DAYS PRIOR TO BEGINNING WORK ON THE SIGNAL SYSTEM, CONTACT THE CITY OF WINSTON-SALEM TRAFFIC SIGNAL SYSTEM OPERATIONS MANAGER AT 919-969-5098. NOTIFY THE CITY OF WINSTON SALEM TRAFFIC SIGNALSYSTEM OPERATIONS MANAGER AFTER ALL WORK IS PERFORMED TO ENSURE THAT THE WINSTON-SALEM SIGNAL SYSTEM IS FUNCTIONING AND IN NORMAL OPERATION. WORK IS NOT COMPLETE UNTIL THE SIGNAL SYSTEM IS BACK UP AND OPERATIONAL.
 2. PRIOR TO REMOVAL OF ANY FIBER OPTIC CABLE CONTRACTOR TO RECORD EXISTING SPLICE ARRANGEMENT FOR COMPARISON TO THE SUPPLIED SPLICE DETAILS. IF DISCREPANCIES EXIST, CONTACT THE ENGINEER TO DETERMINE HOW TO PROCEED WITH RESPLICING. PROVIDE AS-BUILT PLANS TO THE ENGINEER IF FINAL SPLICE ARRANGEMENT DIFFERS FROM THE SUPPLIED SPLICE DETAILS.

3. ETHERNET SWITCH TERMINATION CONFIGURATIONS ARE GENERIC. CONTRACTOR IS RESPONSIBLE FOR DETERMINING \ ENSURING PROPER TERMINATIONS.
 4. INCLUDE ON THE COVER OF EACH SPLICE TRAY THE FOLLOWING: REFERENCE SECTION 1731 "FIBER OPTIC SPLICE ENCLOSURE"
 1) SPLICE LOCATION
 2) DATE
 3) COMPANY NAME
 4) NAME OF INDIVIDUAL PERFORMING THE SPLICING
 PRIOR TO INSTALLING THE COVER ON THE SPLICE TRAY TAKE A DIGITAL PHOTOGRAPH SHOWING THE SPLICE TRAY AND INFORMATION SHOWN ABOVE (1-4) AND SUBMIT PHOTOGRAPH ALONG WITH OTDR TEST RESULTS.

FINAL DESIGN

DOCUMENT NOT CONSIDERED FINAL UNLESS ALL SIGNATURES COMPLETED

	WINSTON-SALEM SIGNAL SYSTEM SPLICE PLANS		
	PLAN DATE: FEBRUARY 2026 PREPARED BY: HEIDI BERGGREN, EI	REVIEWED BY:	