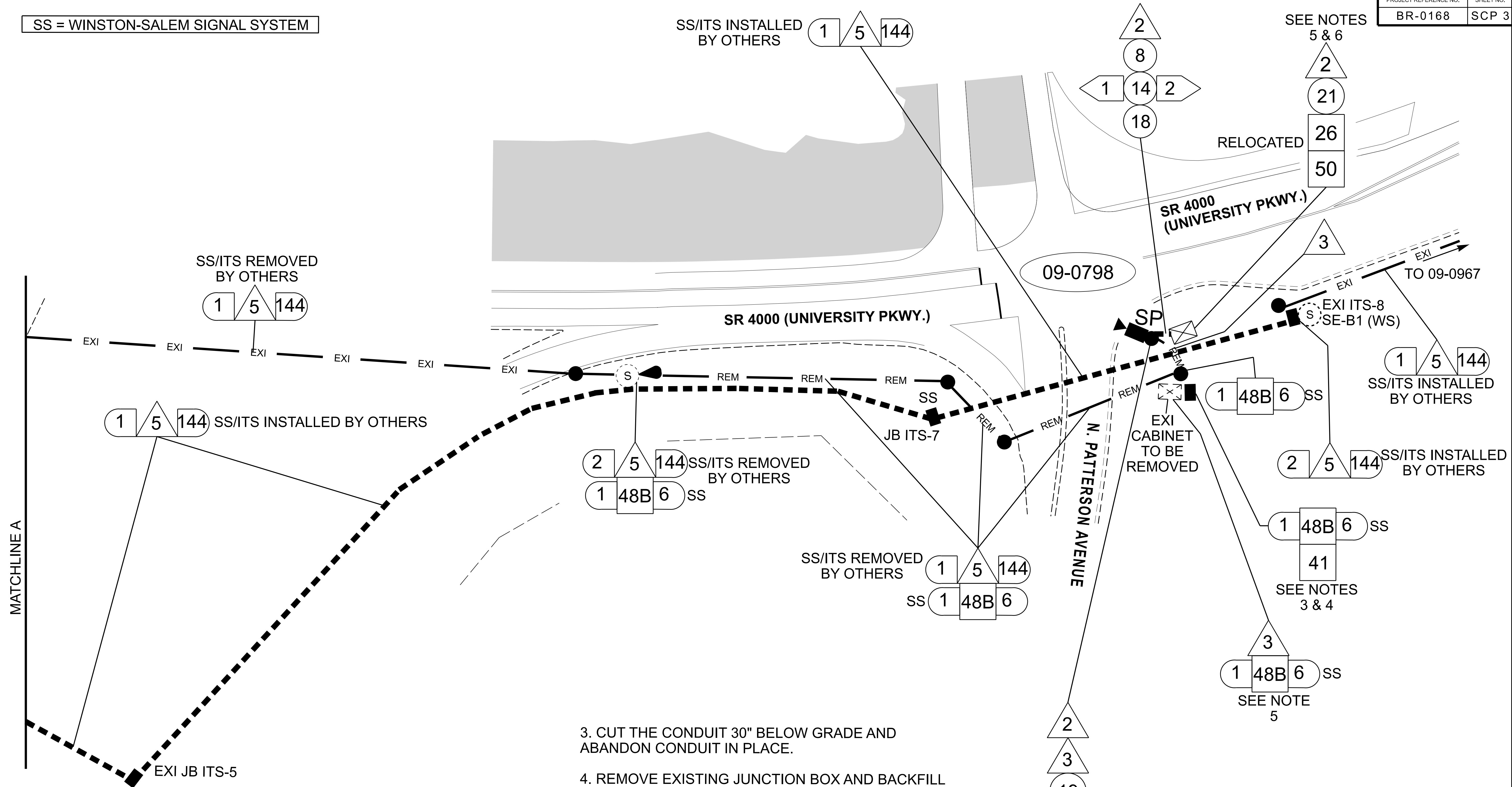


SS = WINSTON-SALEM SIGNAL SYSTEM



1. FIVE (5) DAYS PRIOR TO BEGINNING WORK ON THE SIGNAL SYSTEM, CONTACT THE CITY OF WINSTON-SALEM TRAFFIC SIGNAL SYSTEM OPERATIONS MANAGER AT 919-969-5098. NOTIFY THE CITY OF WINSTON-SALEM TRAFFIC SIGNAL SYSTEM OPERATIONS MANAGER AFTER ALL WORK IS PERFORMED TO ENSURE THAT THE WINSTON-SALEM SIGNAL SYSTEM IS FUNCTIONING AND IN NORMAL OPERATION. WORK IS NOT COMPLETE UNTIL THE SIGNAL SYSTEM IS BACK UP AND OPERATIONAL.

2. PRIOR TO REMOVAL OF ANY FIBER OPTIC CABLE CONTRACTOR TO RECORD EXISTING SPLICE ARRANGEMENT FOR COMPARISON TO THE SUPPLIED SPLICE DETAILS. IF DISCREPANCIES EXIST, CONTACT THE ENGINEER TO DETERMINE HOW TO PROCEED WITH RESPLICING. PROVIDE AS-BUILT PLANS TO THE ENGINEER IF FINAL SPLICE ARRANGEMENT DIFFERS FROM THE SUPPLIED SPLICE DETAILS.


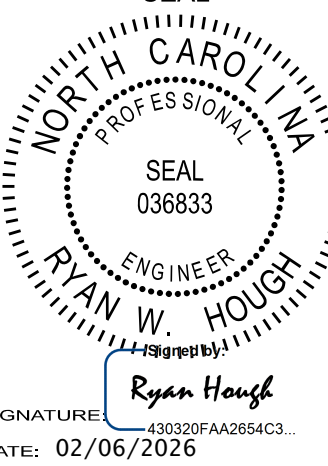
3. CUT THE CONDUIT 30" BELOW GRADE AND ABANDON CONDUIT IN PLACE.

4. REMOVE EXISTING JUNCTION BOX AND BACKFILL WITH APPROVED MATERIAL.

5. RELOCATE EXISTING ETHERNET SWITCH FROM THE EXISTING SIGNAL CABINET TO THE NEW SIGNAL CABINET.

6. PRIOR TO CUTOVER (SHOWN ON THE BR-0168 ITS PLANS) TO THE NEW SS/ITS 144-FIBER CABLE INSTALL CELL MODEMS IN THE SIGNAL CABINETS AT SIN # 09-0651 AND AT SIN #09-0798. CONTACT THE CITY OF WINSTON-SALEM TRAFFIC SIGNAL SYSTEM OPERATIONS MANAGER AT 919-969-5098 TO REQUEST THE CELL MODEMS AND ALLOW EIGHT (8) WEEKS LEAD TIME TO ACQUIRE THE CELL MODEM BEFORE ANTICIPATED DEPLOYMENT.

WORK ON THESE SCP PLANS SHOULD COINCIDE WITH ITS PLANS

<p>TMP PHASE 1</p> <p>Prepared in the Offices of:</p>  <p>750 N. Greenfield Pkwy., Garner, NC 27529</p>		<p>DOCUMENT NOT CONSIDERED FINAL UNLESS ALL SIGNATURES COMPLETED</p>	
<p>WINSTON-SALEM SIGNAL SYSTEM COMMUNICATIONS CABLE AND CONDUIT ROUTING PLANS</p> <p>DIVISION 09 FORSYTH CO WINSTON-SALEM</p> <p>PLAN DATE: FEBRUARY 2026 REVIEWED BY:</p> <p>PREPARED BY: HEIDI BERGGREN, EI</p>			
<p>SCALE: 0 N/A</p>		<p>REVISIONS: _____ INT: _____ DATE: _____</p>	
<p>SIGNATURE: _____ DATE: 02/06/2026</p>		<p>DATE: 02/06/2026</p>	